



Reservdelskatalog Parts Catalogue

LAWN RAKE AXLE

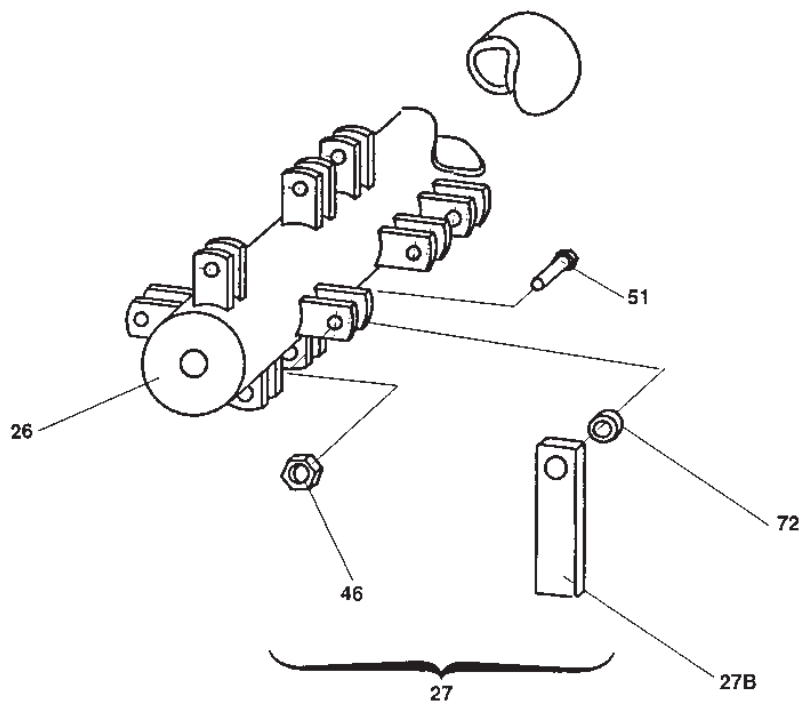
13-1986-11 - Season 2015

- Use GLOBAL GARDEN PRODUCT Genuine Spare Parts specified in the parts list for repair and/or replacement.
 - The contents described in the parts list may change due to improvement.
 - The drawings of the spare parts are only indicative and might not represent the part in question exactly.
 - The indications "right" - "left" - "front" - "rear" refer to the position of the operator when using the machine.
- When placing orders of parts for repair and/or replacement, make sure that the illustrated parts list is the one applying to the machine's year of manufacture, as shown on the identification plate attached to the machine.

© Copyright 2015 Global Garden Products

All rights reserved. No part of this material may be reproduced or transmitted, in any form or by any means, electronic or mechanical, including photocopying, recording or by any information storage and retrieval system, without permission in writing from GLOBAL GARDEN PRODUCTS.

www.stiga.com



Utgåva Issue 17 - 2015		Vertikalskäraraxel		Aerotor shaft	
Pos. Fig.	Antal Q.ty	Art nr Part No	Benämning	Description	Anmärkning Notes
26	1	1319-1720-01	Rotoraxel	Rotor Shaft	
27	1	1319-1773-01	Sats Slagor Mossrivare	Tine Kit (Lawn Rake)	Ej ill/not ill.
27	52	1319-1738-01	Slaga-Mossrivare Park	Tine-Lawn Rake	
46	52	9747-0831-02	Mutter	Nut	
51	52	9997-0825-16	Skruv	Screw	
72	52	1319-1734-01	Distans	Collar	
81	52	1319-1734-01	Distans	Collar	

code	pos.	q.ty	page
1319-1720-01	26	1	p. 3
1319-1734-01	72	52	p. 3
1319-1734-01	81	52	p. 3
1319-1738-01	27	52	p. 3
1319-1773-01	27	1	p. 3
9747-0831-02	46	52	p. 3
9997-0825-16	51	52	p. 3