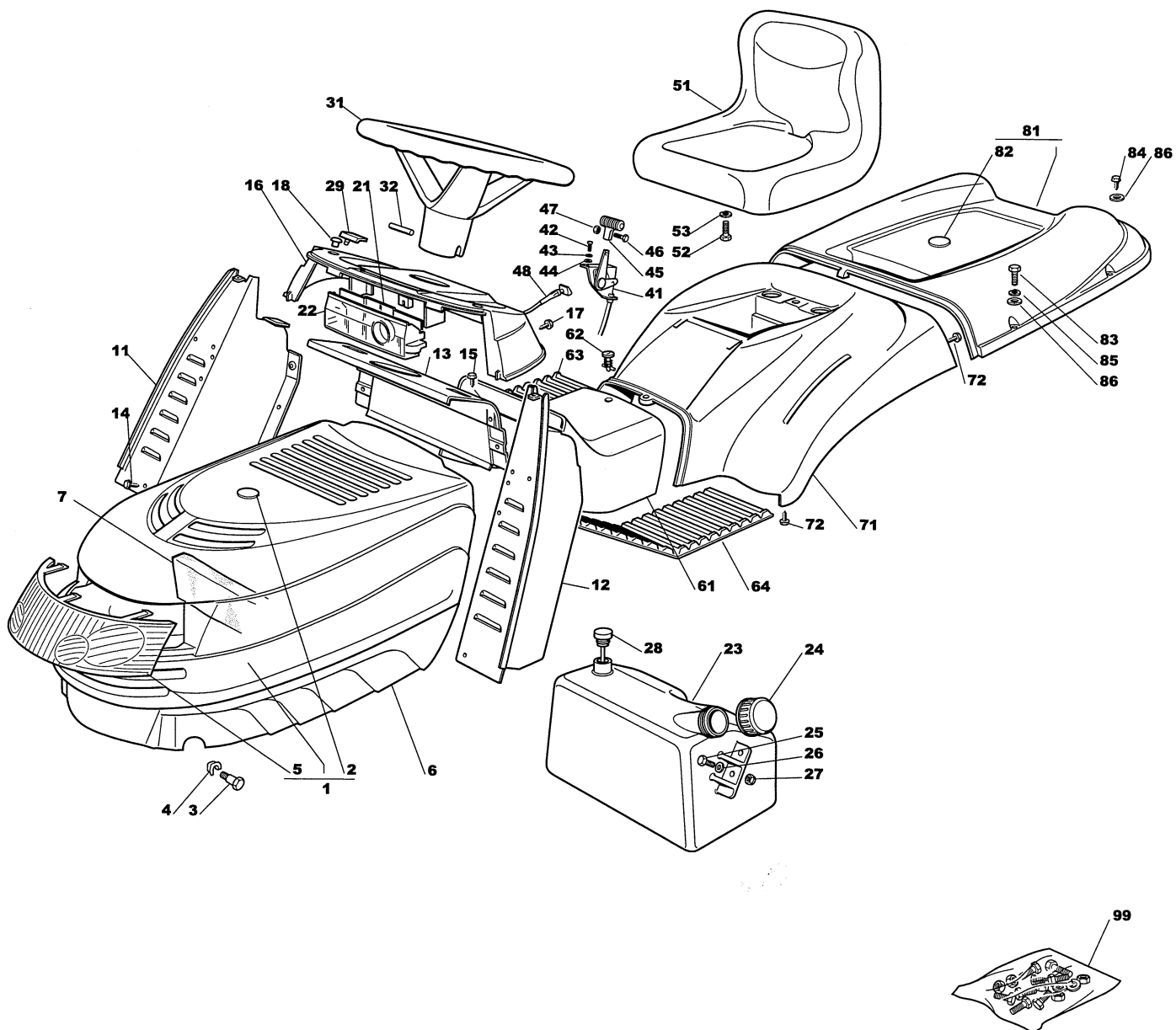


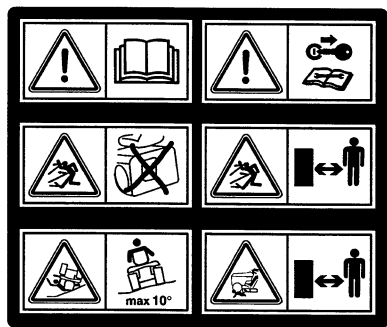
# Genuine Spare Parts

---

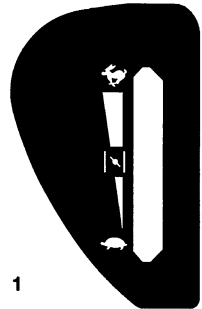




Utgåva Issue 2003- 11		Bildnr Picture No 1238B		ESTATE ROYAL ESTATE PRO 20 KAROSS		ESTATE ROYAL ESTATE PRO 20 BODY WORK		Sida Page 114	
Pos. Fig.	Antal/Quantity				Art nr Part No	Benämning	Description	Sats Kit	Anmärkning Notes
	2533	2535							
1	1	1			1136- 1038- 01	Motorhuv.....	Engine hood.....		Inkl. pos 2, 5
2	1	1			1136- 0905- 01	• Platta .....	• Plate .....		
3	2	2			1136- 0230- 01	Bult .....	Bolt .....		
4	2	2			1136- 0009- 01	Låsplatta .....	Lock plate .....		
5	1	1			1136- 0888- 01	• Grill .....	• Grill .....		
6	1	1			1136- 0866- 01	Motorhuv- nedre.....	Engine hood- lower .....		
7	1				1136- 0921- 01	Avskiljare .....	Intake separator .....		
7		1			1136- 0922- 01	Avskiljare .....	Intake separator .....		
11	1	1			1136- 0535- 01	Stöd- hö.....	Dashboard support- RH .....		
12	1	1			1136- 0534- 01	Stöd- vä.....	Dashboard support- LH .....		
13	1	1			1136- 0536- 01	Stöd- mittre .....	Dashboard support- cen.....		
14	2	2			9848- 8013- 16	Skruv .....	Screw .....		
15	4	4			9848- 8013- 16	Skruv .....	Screw .....		
16	1	1			1136- 0870- 01	Instrumentbräda.....	Dashboard .....		
17	4	4			9847- 8013- 16	Skruv .....	Screw .....		
18	2	2			1136- 0872- 01	Plugg .....	Plug .....		
21	1	1			1136- 0274- 01	Skydd .....	Protection .....		
22	1	1			1136- 0285- 01	Skydd .....	Protection .....		
23	1				1136- 0317- 01	Bränsletank.....	Fuel tank .....		
23		1			1136- 0924- 01	Bränsletank.....	Fuel tank .....		
24	1	1			1136- 0344- 01	Tanklock .....	Tank cap.....		
25	2	2			9997- 0516- 16	Skruv .....	Screw .....		
26	2	2			9699- 0018- 02	Bricka .....	Washer.....		
27	2	2			9747- 0531- 02	Mutter.....	Nut .....		
28		1			1136- 0883- 01	Bränslemätare .....	Fuel level indicator .....		
29	2	2			1136- 0179- 01	Huvskydd.....	Grommet.....		
31	1	1			1136- 0361- 01	Ratt .....	Steering wheel .....		
32	1	1			9595- 0272- 00	• Stift .....	• Pin .....		
41	1				1136- 0439- 01	Gasreglage.....	Throttle control .....		
41		1			1136- 1027- 01	Gasreglage.....	Throttle control .....		
42	2	2			9997- 0412- 16	Skruv .....	Screw .....		
43	2	2			9683- 0010- 02	Bricka .....	Washer.....		
44	2	2			9699- 0021- 02	Bricka .....	Washer.....		
45	1	1			1136- 0192- 01	Knopp.....	Handle.....		
46	1	1			9865- 0412- 16	Skruv .....	Screw .....		
47	1	1			9799- 0431- 02	Mutter.....	Nut .....		
48		1			1136- 0867- 01	Choke .....	Starter drive .....		
51	1	1			1136- 0316- 01	Sits .....	Seat .....		
52	4	4			9997- 0820- 16	Skruv .....	Screw .....		
53	4	4			9683- 0030- 02	Låsbricka .....	Lock washer.....		
61	1	1			1136- 0145- 01	Kåpa .....	Cover .....		
62	1	1			1136- 0268- 01	Stift.....	Pivot.....		
63	1	1			1136- 0153- 01	Fotstegsskydd- hö .....	Footboard cover- RH .....		
64	1	1			1136- 0146- 01	Fotstegsskydd- vä.....	Footboard cover- LH .....		
71	1	1			1136- 1228- 01	Hjulkåpa.....	Wheel cover .....		
72	4	4			9836- 9618- 12	Skruv .....	Screw .....		
81	1	1			1136- 1039- 01	Uppsamlarlock.....	Grass catcher cover .....	Inkl. pos 82	
82	1	1			1136- 0905- 01	• Platta .....	• Plate .....		
83	2	2			9997- 0635- 12	Skruv .....	Screw .....		
84	4	4			9847- 8116- 16	Skruv .....	Screw .....		
85	2	2			9683- 0010- 02	Bricka .....	Washer.....		
86	6	6			9699- 0035- 02	Planbricka .....	Flat washer.....		
99	1	1			1136- 0597- 01	Tillbehörspåse .....	Key outfit.....	Inkl. pos 32	



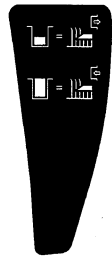
10



2



11



6



7



13

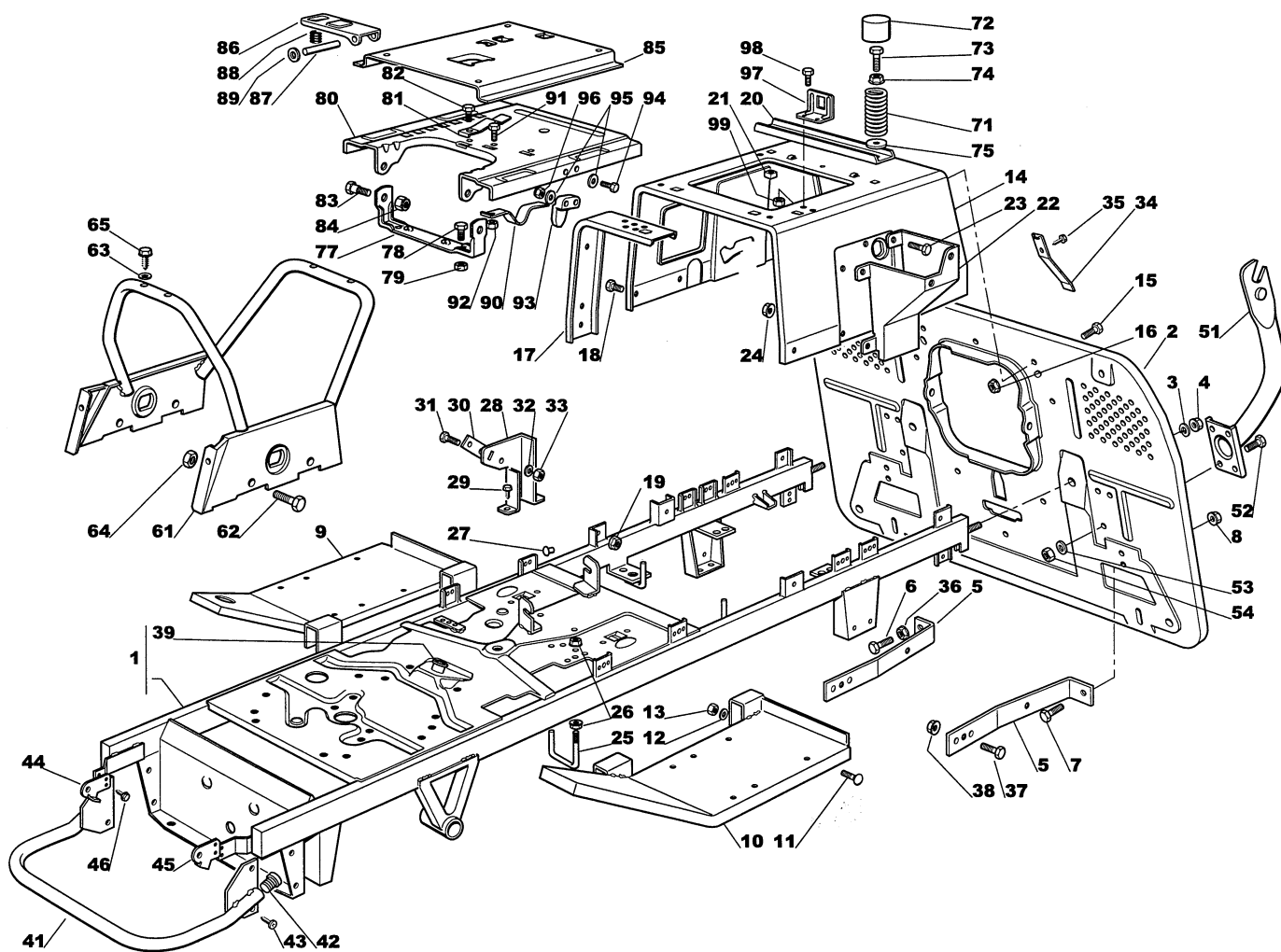


9

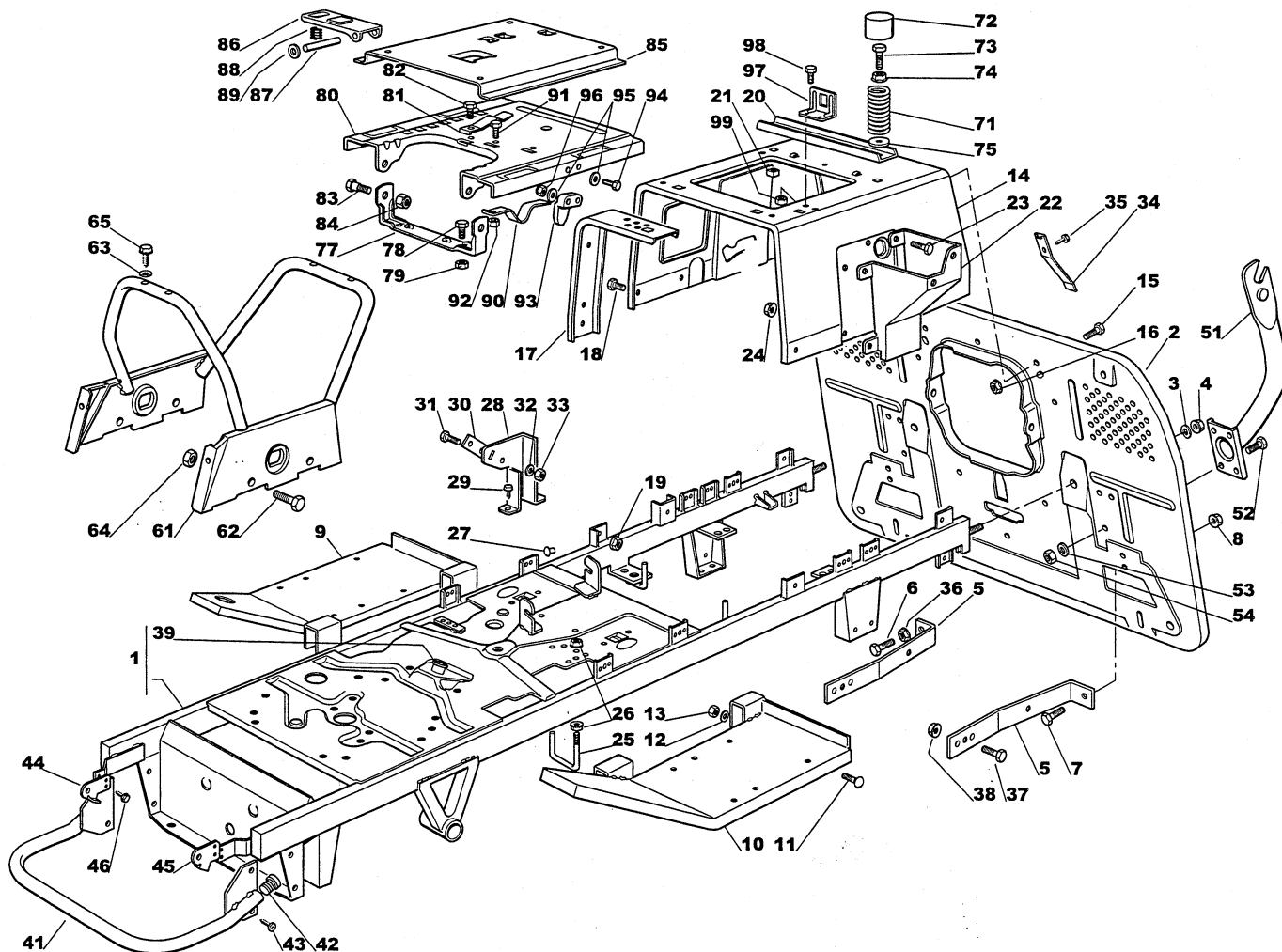


8

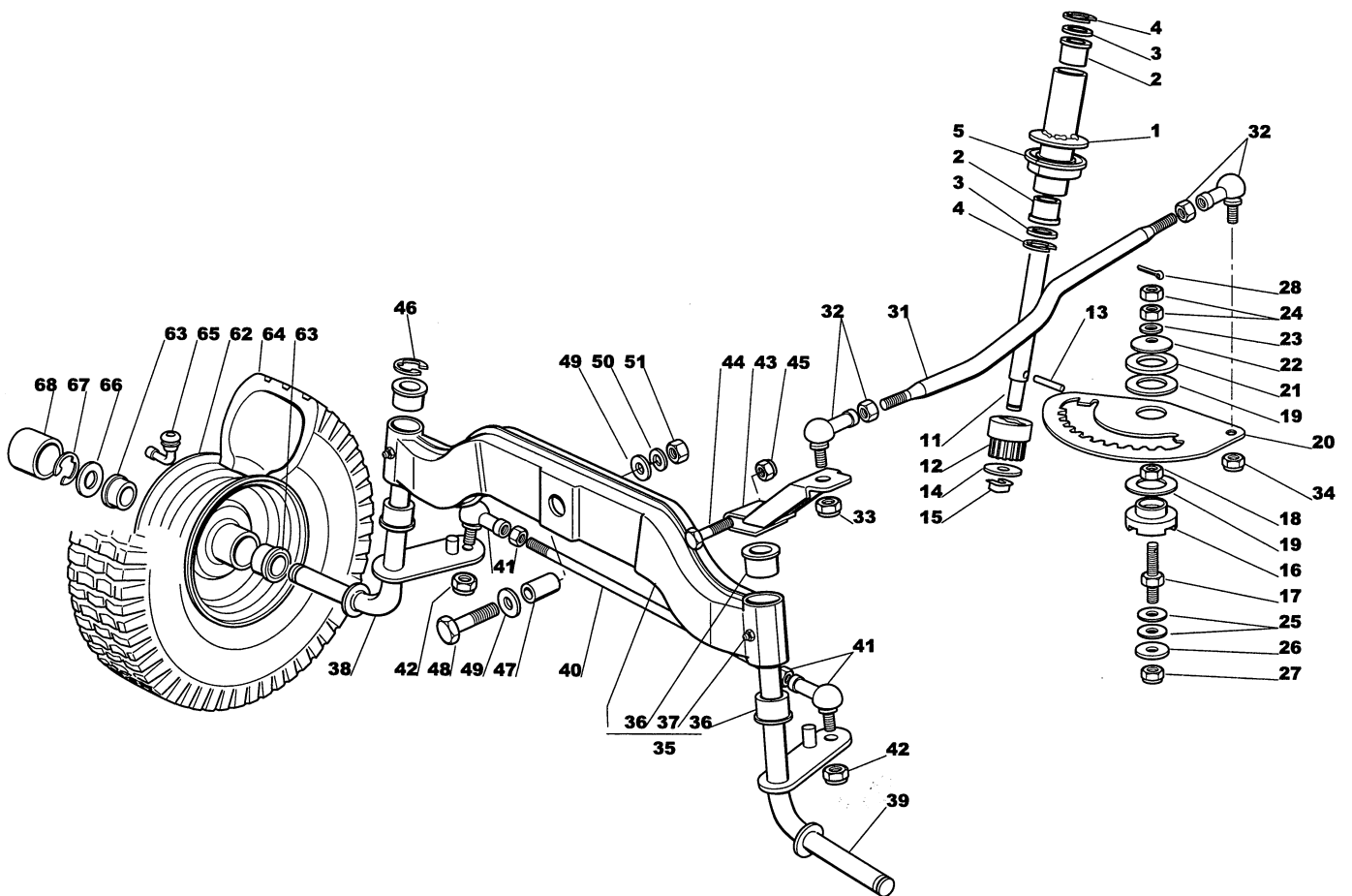
Utgåva Issue 2003- 11		Bildnr Picture No 1210B		ESTATE ROYAL ESTATE PRO 20 DEKALER		ESTATE ROYAL ESTATE PRO 20 LABELS		Sida Page 116	
Pos. Fig.	Antal/Quantity				Art nr Part No	Benämning	Description	Sats Kit	Anmärkning Notes
	2533 2535								
1	1				1136- 0025- 01 Dekal .....	Label .....			
2	1				1136- 0022- 01 Dekal .....	Label .....			
6	1				1136- 0040- 01 Dekal .....	Label .....			
7	1				1136- 0039- 01 Dekal .....	Label .....			
8	1				1136- 0038- 01 Dekal .....	Label .....			
9	1				1136- 0030- 01 Dekal .....	Label .....			
10	2				1136- 0021- 01 Dekal .....	Label .....			
11	1				1136- 1111- 01 Dekal .....	Label .....			
13	1				1136- 1218- 01 Dekal .....	Label .....			



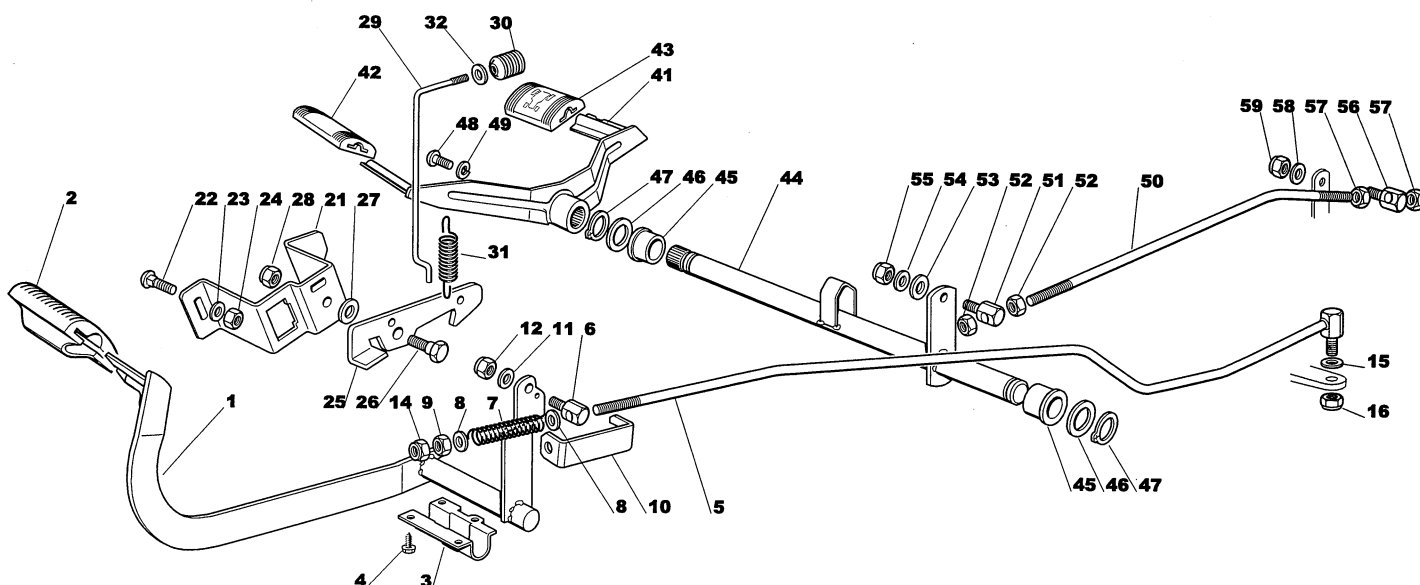
Utgåva Issue  2003-11		Bildnr Picture No  1237B		ESTATE ROYAL ESTATE PRO 20 CHASSI		ESTATE ROYAL ESTATE PRO 20 CHASSIS		Sida Page  118	
Pos. Fig.	Antal/Quantity				Art nr Part No	Benämning	Description	Sats Kit	Anmärkning Notes
	2533								
1	1				1136-1058-01	Ram.....	Frame.....		Inkl. pos 39
2	1				1136-0514-01	Plåt- bak.....	Plate- rear.....		
3	2				9683-0040-02	Låsbricka.....	Lock washer.....		
4	2				9799-1031-02	Mutter.....	Nut.....		
5	2				1136-0328-01	Förstärkning.....	Reinforcement.....		
6	1				9997-0835-12	Skruv.....	Screw.....		
7	3				9997-0820-16	Skruv.....	Screw.....		
8	4				9739-0831-22	Mutter.....	Nut.....		
9	1				1136-0511-01	Fotsteg- hö.....	Footboard support- RH.....		
10	1				1136-0512-01	Fotsteg- vä.....	Footboard support- LH.....		
11	4				9898-0645-12	Skruv.....	Screw.....		
12	4				9699-0060-02	Planbricka.....	Flat washer.....		
13	4				9747-0631-02	Låsmutter.....	Lock nut.....		
14	1				1136-0338-01	Sitsfäste.....	Seat support.....		
15	5				9997-0616-16	Skruv.....	Screw.....		
16	5				9739-0631-22	Mutter.....	Nut.....		
17	2				1136-0303-01	Förstärkning.....	Reinforcement.....		
18	6				9997-0616-16	Skruv.....	Screw.....		
19	6				9739-0631-22	Mutter.....	Nut.....		
20	1				1136-0304-01	Förstärkning.....	Reinforcement.....		
21	2				1136-0003-01	Fyrkantmutter.....	Square nut.....		
22	1				1136-0339-01	Stöd.....	Support.....		
23	4				9997-0616-16	Skruv.....	Screw.....		
24	4				9739-0631-22	Mutter.....	Nut.....		
25	1				1136-0267-01	Remstyrning.....	Belt guide.....		
26	2				9739-0631-22	Mutter.....	Nut.....		
27	1				1136-0386-01	Gummiplugg.....	Grommet.....		
28	1				1136-0340-01	Stöd.....	Support.....		
29	2				9848-8013-16	Skruv.....	Screw.....		
30	1				1136-0407-01	Plåt.....	Plate.....		
31	2				9948-0320-16	Skruv.....	Screw.....		
32	2				9683-0005-02	Låsbricka.....	Lock washer.....		
33	2				9799-0331-02	Mutter.....	Nut.....		
34	1				1136-0220-01	Fjäder.....	Spring.....		
35	1				9847-8009-16	Skruv.....	Screw.....		
36	1				9799-0831-02	Mutter.....	Nut.....		
37	2				9997-0820-16	Skruv.....	Screw.....		
38	2				9739-0831-22	Mutter.....	Nut.....		
39	1				1136-1226-01	• Bussning.....	• Bushing.....		
41	1				1136-0553-01	Ljuddämparskydd.....	Muffler protection.....		
42	2				1136-0061-01	Plugg.....	Cap.....		
43	4				9847-8216-16	Skruv.....	Screw.....		
44	1				1136-0259-01	Huvfäste- hö.....	Hood plate- RH.....		
45	1				1136-0260-01	Huvfäste- vä.....	Hood plate- LH.....		
46	4				9847-8009-16	Skruv.....	Screw.....		
51	2				1136-0532-01	Fäste.....	Support.....		
52	6				9997-0816-16	Skruv.....	Screw.....		
53	6				9699-0056-02	Planbricka.....	Flat washer.....		
54	6				9739-0831-22	Mutter.....	Nut.....		
61	1				1136-0524-01	Ram- övre.....	Frame- top.....		
62	4				9997-0816-16	Skruv.....	Screw.....		
63	4				9699-0035-02	Planbricka.....	Flat washer.....		
64	4				9739-0831-22	Mutter.....	Nut.....		
65	4				9847-8119-16	Skruv.....	Screw.....		
71	2				1136-0202-01	Fjäder.....	Spring.....		
72	2				1136-0156-01	Lock.....	Cap.....		
73	2				1136-0358-01	Skruv.....	Screw.....		
74	2				9739-0831-22	Mutter.....	Nut.....		
75	2				1136-0014-01	Bricka.....	Washer.....		
77	1				1136-0530-01	Sitsbygel.....	Seat clamp.....		
78	2				9997-0816-16	Skruv.....	Screw.....		
79	2				9739-0831-22	Mutter.....	Nut.....		
80	1				1136-0343-01	Sitsstöd.....	Seat support.....		



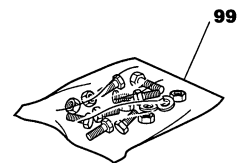
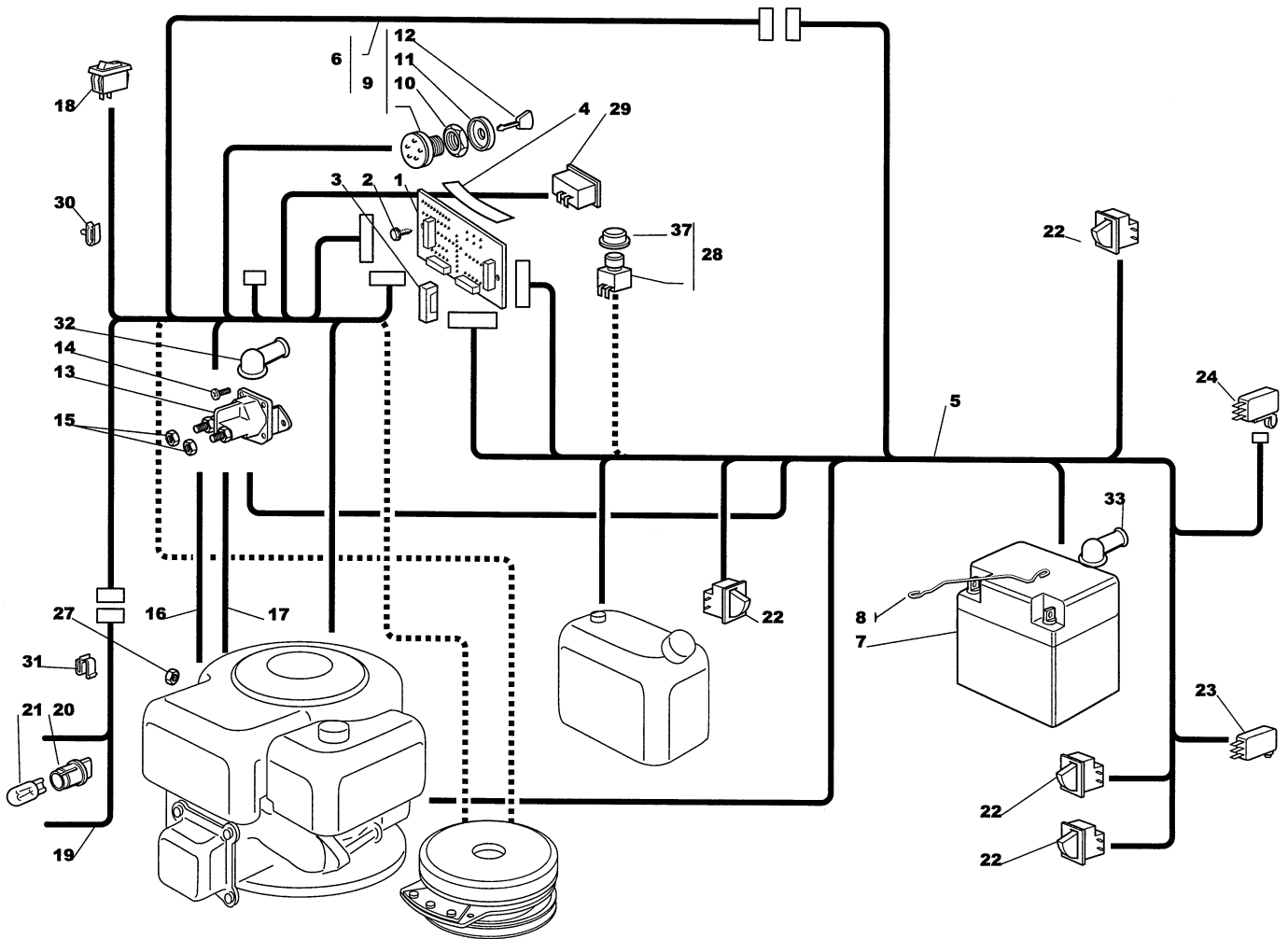
Utgåva Issue 2003- 11		Bildnr Picture No 1237B		ESTATE ROYAL ESTATE PRO 20 CHASSI		ESTATE ROYAL ESTATE PRO 20 CHASSIS		Sida Page 120	
Pos. Fig.	Antal/Quantity				Art nr Part No	Benämning	Description	Sats Kit	Anmärkning Notes
	2533 2535								
81	1				1136- 0201- 01	Fjäder.....	Spring .....		
82	1				9847- 8009- 16	Skruv .....	Screw .....		
83	2				1136- 0086- 01	Bult .....	Bolt .....		
84	2				9712- 0831- 02	Låsmutter .....	Lock nut .....		
85	1				1136- 0342- 01	Sitsfäste.....	Seat support .....		
86	1				1136- 0184- 01	Stoppparm.....	Stop lever.....		
87	1				1136- 0224- 01	Axel .....	Pin .....		
88	1				1136- 0200- 01	Fjäder.....	Spring .....		
89	2				9675- 0008- 02	Starlock .....	Locking washer.....		
90	1				1136- 0891- 01	Fjäder.....	Spring .....		
91	1				9997- 0512- 16	Skruv .....	Screw .....		
92	1				9747- 0531- 02	Mutter.....	Nut .....		
93	1				1136- 1227- 01	Kam .....	Cam .....		
94	2				1136- 0819- 01	Skruv .....	Screw .....		
95	4				9699- 0024- 02	Planbricka.....	Flat washer .....		
96	2				1136- 1212- 01	Mutter.....	Nut .....		
97	1				1136- 0925- 01	Vinkelfäste .....	Angle bracket .....		
98	2				9848- 8013- 16	Skruv .....	Screw .....		
99	2				1136- 0010- 01	Låsplatta .....	Lock plate .....		



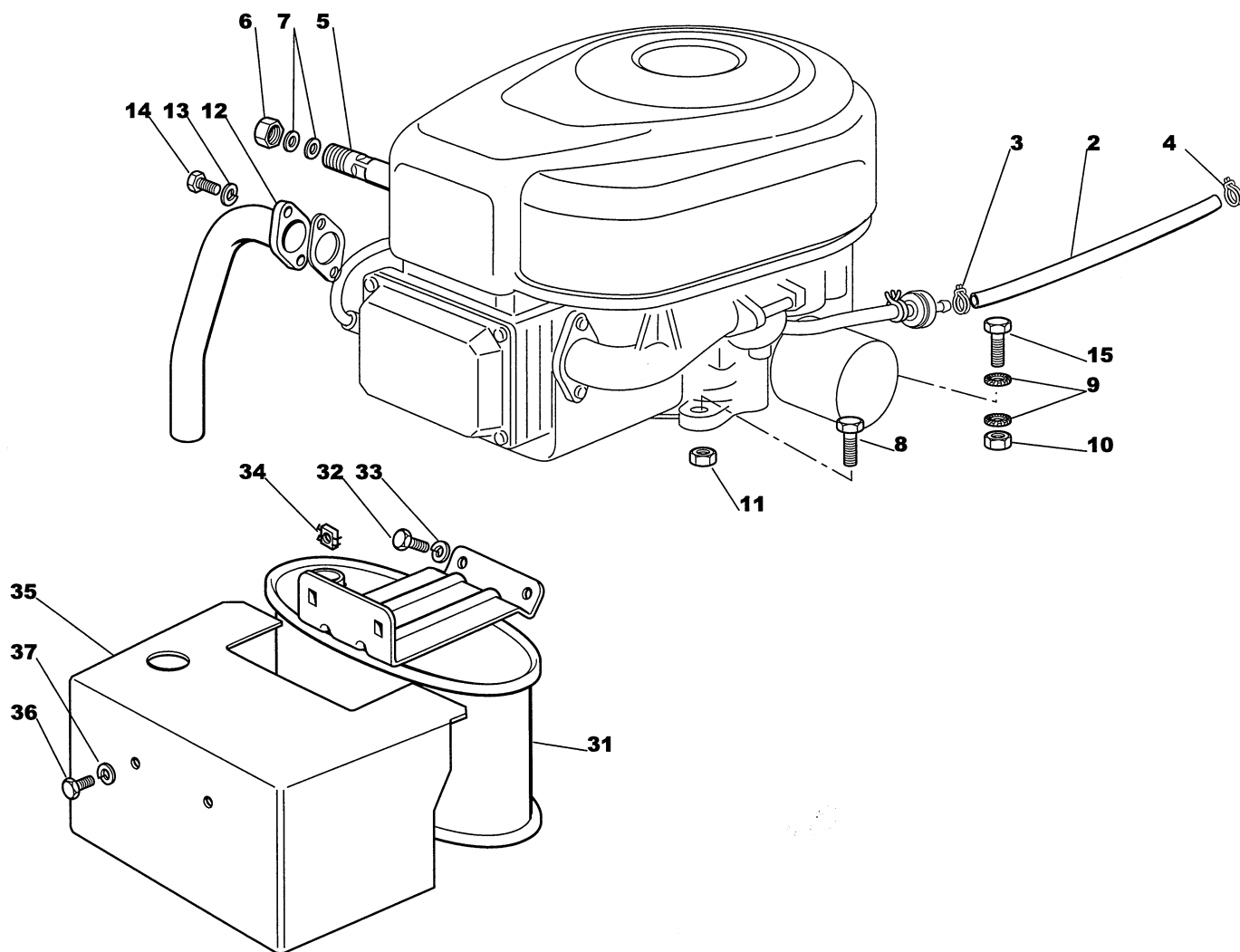
Utgåva Issue 2003- 11		Bildnr Picture No 1239A		ESTATE ROYAL ESTATE PRO 20 STYRNING		ESTATE ROYAL ESTATE PRO 20 STEERING		Sida Page 122	
Pos. Fig.	Antal/Quantity				Art nr Part No	Benämning	Description	Sats Kit	Anmärkning Notes
	2533 2535								
1	1				1136- 0555- 01	Rörhylsa .....	Tube guide .....		Inkl. pos 36, 37
2	2				1136- 0125- 01	Bussning .....	Bushing .....		
3	2				1136- 0306- 01	Bricka .....	Washer .....		
4	2				9652- 0015- 04	Låsring .....	Retaining ring .....		
5	2				1136- 0126- 01	Bussning .....	Bushing .....		
11	1				1136- 0249- 01	Rattstång .....	Steering column .....		
12	1				1136- 0263- 01	Styrdrev .....	Steering pinion .....		
13	1				9595- 0262- 00	Spännstift .....	Locating pin .....		
14	1				9699- 0037- 02	Bricka .....	Washer .....		
15	1				1136- 0008- 01	Låsplatta .....	Lock plate .....		
16	1				1136- 0128- 01	Bussning .....	Bushing .....		
17	1				1136- 0246- 01	Pinnbult .....	Stud bolt .....		
18	1				9799- 1031- 02	Mutter .....	Nut .....		
19	2				1136- 0310- 01	Bricka .....	Washer .....		
20	1				1136- 0320- 01	Styrsektor .....	Steering sector .....		
21	1				1136- 0311- 01	Bricka .....	Washer .....		
22	1				1136- 0083- 01	Fjäderbricka .....	Elastic washer .....		
23	1				9699- 0035- 02	Planbricka .....	Flat washer .....		
24	2				9799- 1031- 02	Mutter .....	Nut .....		
25	2				1136- 0087- 01	Bricka .....	Washer .....		
26	1				1136- 0015- 01	Bricka .....	Washer .....		
27	1				9747- 1031- 02	Låsmutter .....	Lock nut .....		
28	1				9599- 0070- 02	Saxsprint .....	Split pin .....		
31	1				1136- 0106- 01	Styrstag .....	Steering rod .....		
32	2				1136- 0092- 01	Kulled .....	Ball joint .....		
33	1				9747- 1031- 02	Låsmutter .....	Lock nut .....		
34	1				9747- 1031- 02	Låsmutter .....	Lock nut .....		
35	1				1136- 0465- 01	Framaxel kpl .....	Front wheel axle assy .....		
36	4				1136- 0121- 01	• Bussning .....	• Bushing .....		
37	2				9501- 0500- 00	• Smörjnippel .....	• Grease joint .....		
38	1				1136- 0484- 01	Hjulspindel- hö .....	Stub axle- RH .....		
39	1				1136- 0483- 01	Hjulspindel- vä .....	Stub axle- LH .....		
40	1				1136- 0345- 01	Parallellstag .....	Tie rod .....		
41	2				1136- 0092- 01	Kulled .....	Ball joint .....		
42	2				9747- 1031- 02	Låsmutter .....	Lock nut .....		
43	1				1136- 0488- 01	Styrmarm .....	Steering arm .....		
44	1				9997- 0890- 12	Skruv .....	Screw .....		
45	1				9747- 0831- 02	Mutter .....	Lock nut .....		
46	1				9652- 0015- 04	Låsring .....	Retaining ring .....		
47	1				1136- 0160- 01	Distans .....	Spacer .....		
48	1				9997- 1680- 12	Skruv .....	Screw .....		
49	2				9699- 0104- 02	Bricka .....	Washer .....		
50	1				9683- 0065- 02	Låsbricka .....	Lock washer .....		
51	1				9799- 1631- 02	Mutter .....	Nut .....		
62	2				1136- 0454- 01	Fälg .....	Rim .....		
63	4				1136- 0157- 01	Lager .....	Bearing .....		
64	2				1136- 0269- 01	Däck (Turf Saver) .....	Tire (Turf Saver) .....		
64	2				1136- 0271- 01	Däck (Deli) .....	Tire (Deli) .....		
65	2				1136- 0359- 01	Ventil .....	Valve .....		
66	2				1136- 0305- 01	Bricka .....	Washer .....		
67	2				9652- 0015- 04	Låsring .....	Retaining ring .....		
68	2				1136- 0081- 01	Navkapsel .....	Hub cap .....		



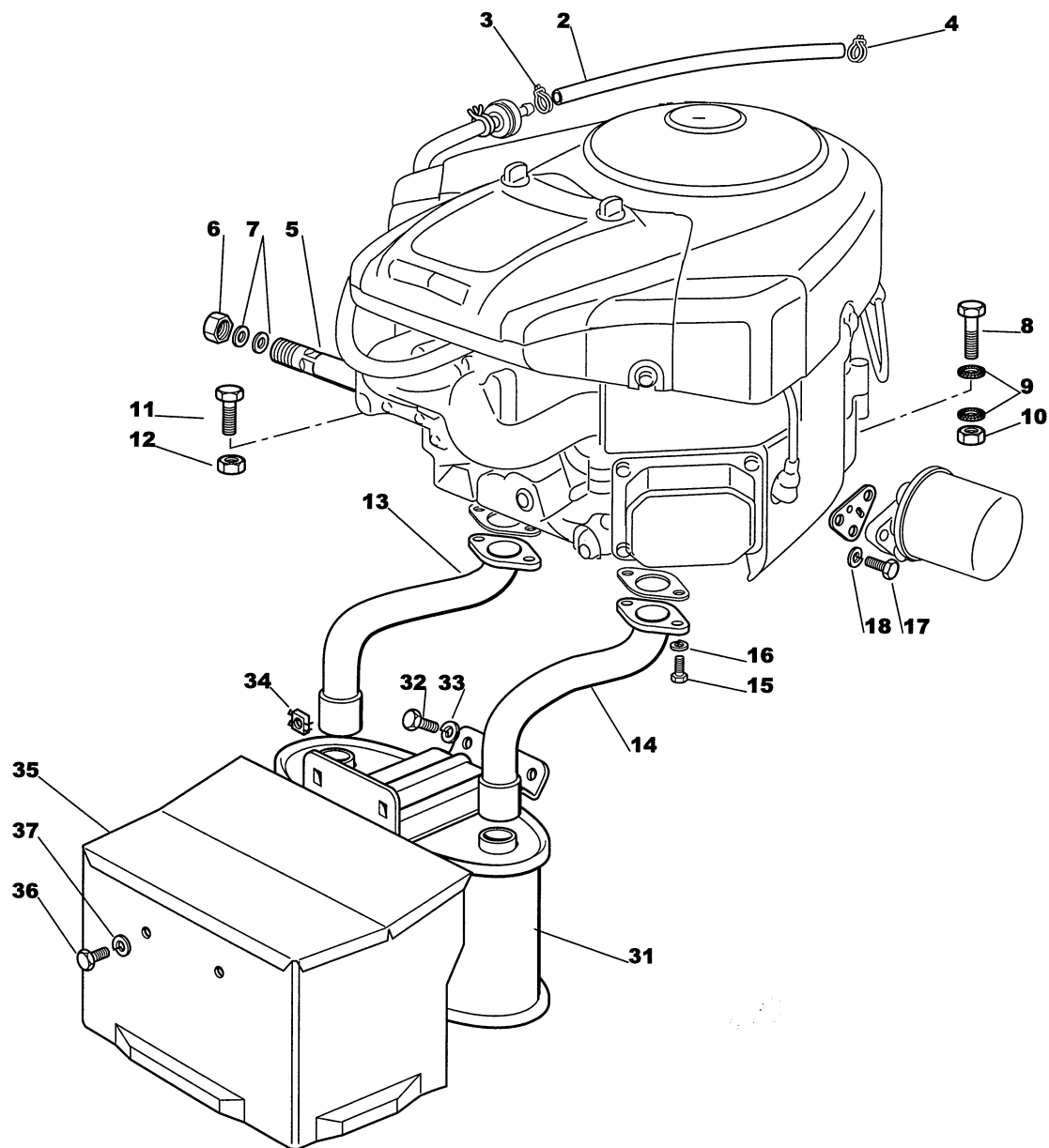
Utgåva Issue  2003- 11		Bildnr Picture No  1240		ESTATE ROYAL ESTATE PRO 20 BROMSREGLAGE DRIVREGLAGE		ESTATE ROYAL ESTATE PRO 20 BRAKE CONTROL DRIVE CONTROL		Sida Page  124	
Pos. Fig.	Antal/Quantity				Art nr Part No	Benämning	Description	Sats Kit	Anmärkning Notes
	2533			2535					
1	1				1136-0508-01	Bromspedal .....	Brake pedal .....		
2	1				1136-0151-01	Pedalskydd .....	Pedal cover .....		
3	1				1136-0258-01	Bygel .....	Clamp .....		
4	4				9847-8016-16	Skruv .....	Screw .....		
5	1				1136-0453-01	Bromsstång .....	Brake rod .....		
6	1				1136-0239-01	Ledbult .....	Pivot bolt .....		
7	1				1136-0218-01	Fjäder .....	Spring .....		
8	2				9699-0035-02	Planbricka .....	Flat washer .....		
9	1				9799-1031-02	Mutter .....	Nut .....		
10	1				1136-0329-01	Bygel .....	Clamp .....		
11	1				9699-0090-02	Planbricka .....	Flat washer .....		
12	1				9747-0831-02	Mutter .....	Lock nut .....		
14	1				9747-1031-02	Låsmutter .....	Lock nut .....		
15	1				9699-0090-02	Planbricka .....	Flat washer .....		
16	1				9747-0831-02	Mutter .....	Lock nut .....		
21	1				1136-0341-01	Fäste .....	Support .....		
22	2				9898-0620-16	Skruv .....	Screw .....		
23	1				9699-0060-02	Planbricka .....	Flat washer .....		
24	2				9747-0631-02	Låsmutter .....	Lock nut .....		
25	1				1136-0178-01	Spärrhake .....	Hook .....		
26	1				1136-0086-01	Bult .....	Bolt .....		
27	1				1136-0309-01	Bricka .....	Washer .....		
28	1				9747-0831-02	Mutter .....	Lock nut .....		
29	1				1136-0115-01	P- bromsarm .....	Parking brake lever .....		
30	1				1136-0196-01	Knopp .....	Knob .....		
31	1				1136-0205-01	Fjäder .....	Spring .....		
32	1				9699-0018-02	Bricka .....	Washer .....		
41	1				1136-0509-01	Drivpedal .....	Drive pedal .....		
42	1				1136-0149-01	Pedalskydd- fram .....	Pedal cover- front .....		
43	1				1136-0150-01	Pedalskydd- bak .....	Pedal cover- rear .....		
44	1				1136-0451-01	Pedalaxel .....	Pedal axle .....		
45	2				1136-0078-01	Bussning .....	Bushing .....		
46	2				1136-0090-01	Bricka .....	Washer .....		
47	2				9650-0020-04	Spärring .....	Circlip .....		
48	1				9939-0816-16	Skruv .....	Screw .....		
49	1				9683-0030-02	Låsbricka .....	Lock washer .....		
50	1				1136-0113-01	Stag .....	Drive rod .....		
51	1				1136-0241-01	Ledbult .....	Pivot bolt .....		
52	2				9799-0831-02	Mutter .....	Nut .....		
53	1				9699-0035-02	Planbricka .....	Flat washer .....		
54	1				9699-0060-02	Planbricka .....	Flat washer .....		
55	1				9747-0631-02	Låsmutter .....	Lock nut .....		
56	1				1136-0241-01	Ledbult .....	Pivot bolt .....		
57	2				9799-0831-02	Mutter .....	Nut .....		
58	1				9699-0060-02	Planbricka .....	Flat washer .....		
59	1				9747-0631-02	Låsmutter .....	Lock nut .....		



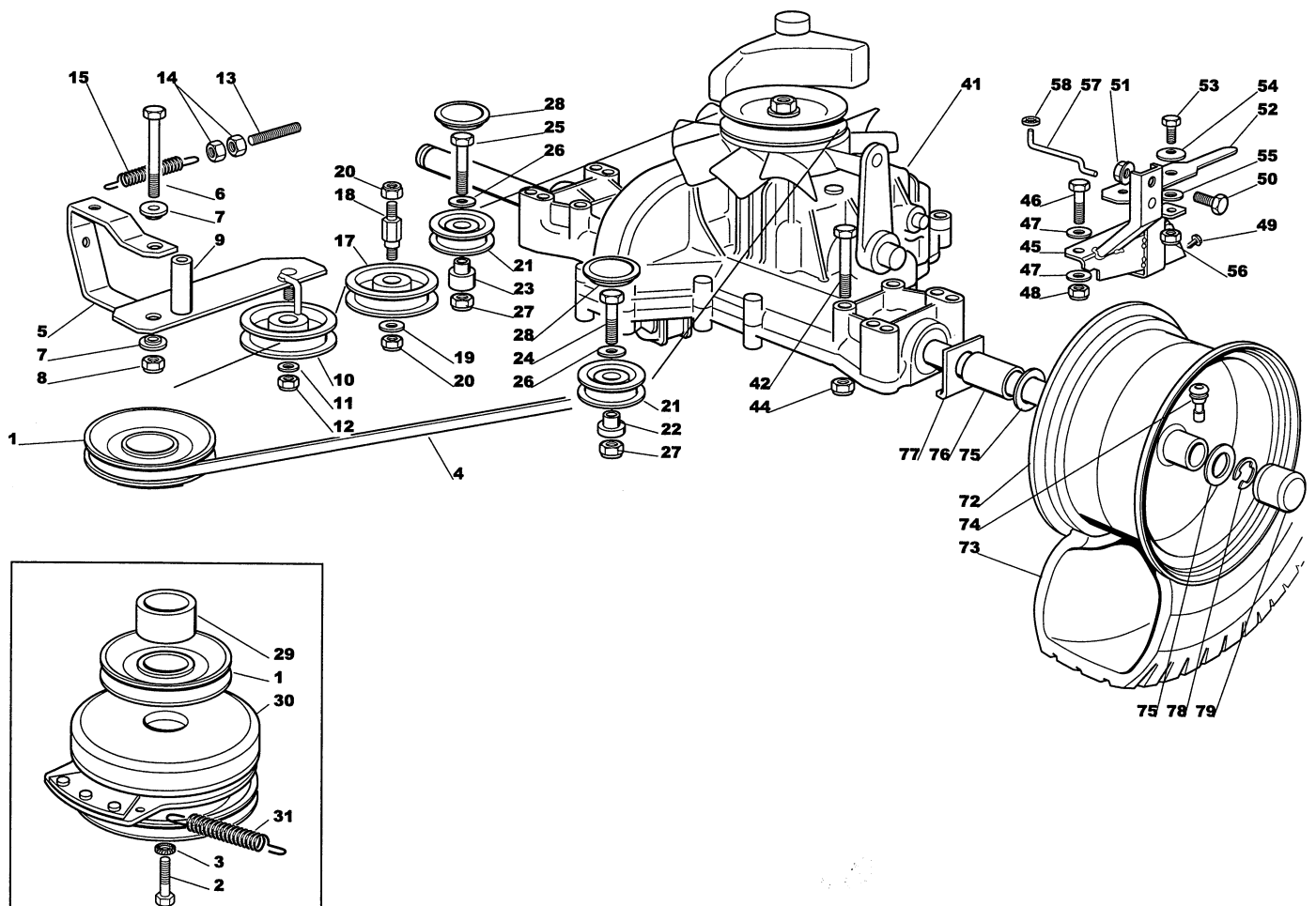
Utgåva Issue  2003- 11		Bildnr Picture No  1247B		ESTATE ROYAL ESTATE PRO 20 ELUTRUSTNING		ESTATE ROYAL ESTATE PRO 20 EL. EQUIPMENT		Sida Page  126	
Pos. Fig.	Antal/Quantity				Art nr Part No	Benämning	Description	Sats Kit	Anmärkning Notes
	2533	2535							
1	1	1			1136- 0313- 01	Elektronikkort .....	Electronic card .....		
2	3	3			9847- 7816- 16	Skruv .....	Screw .....		
3	1	1			1136- 0428- 01	• Säkring .....	• Fuse .....		6.3 A
4	1	1			1136- 0199- 01	Kontrollskylt .....	Check control panel .....		6 functions
4	1	1			1136- 0889- 01	Kontrollskylt .....	Check control panel .....		8 functions
5		1			1136- 1284- 01	Kabelhärva.....	Harness.....		
5	1				1136- 1285- 01	Kabelhärva.....	Harness.....		
6	1	1			1136- 0471- 01	Kabelhärva.....	Harness.....		Inkl. pos 9
7	1	1			1134- 4804- 01	Batteri.....	Battery .....		
8	1	1			1136- 0215- 01	Fjäder.....	Spring .....		
9	1	1			1136- 0056- 01	• Tändningslås .....	• Ignition switch .....		Inkl. pos 10 - 12
10	1	1			1136- 0049- 01	•• Mutter .....	•• Nut .....		
11	1	1			1134- 4097- 01	•• Täckkåpa.....	•• Cap .....		
12	1	1			1134- 2848- 01	•• Tändningsnyckel.....	•• Ignition key .....		
13	1	1			1136- 0064- 01	Startrelä.....	Solenoid.....		
14	2	2			9997- 0620- 16	Skruv .....	Screw .....		
15	2	2			9794- 5131- 02	Mutter.....	Nut .....		
16	1	1			1136- 0132- 01	Kabelhärva.....	Harness.....		
17	1	1			1136- 0133- 01	Kabel .....	Cable .....		
18	1	1			1136- 0055- 01	Brytare.....	Switch .....		Strålkastare/light
19	1	1			1136- 0468- 01	Kabel .....	Cable .....		
20	2	2			1136- 0429- 01	Lamphållare.....	Lamp holder.....		
21	2	2			1136- 0058- 01	Glödlampa .....	Bulb .....		
22	3	3			1136- 0073- 01	Mikrobrytare.....	Micro switch .....		
23	1	1			1136- 0072- 01	Mikrobrytare.....	Micro switch .....		Full upps./grass bag
24	1	1			1136- 0076- 01	Mikrobrytare.....	Micro switch .....		Neutral
27	1	1			9795- 3531- 02	Mutter.....	Nut .....		
28	1	1			1136- 0057- 01	Mikrobrytare.....	Micro switch .....		Koppling/clutch
29	1	1			1136- 0043- 01	Timräknare .....	Hour counter .....		
30	5	5			1136- 0427- 01	Kabelhållare .....	Cable holder .....		
31	1	1			1136- 0426- 01	Kabelhållare .....	Cable holder .....		
32	1	1			1136- 0059- 01	Polskydd.....	Protection .....		
33	1	1			1136- 0060- 01	Polskydd.....	Protection .....		
37	1	1			1136- 1221- 01	Lock.....	Cap.....		
99	1	1			1136- 0597- 01	Tillbehörspåse .....	Key outfit.....		Inkl. pos 3, 12



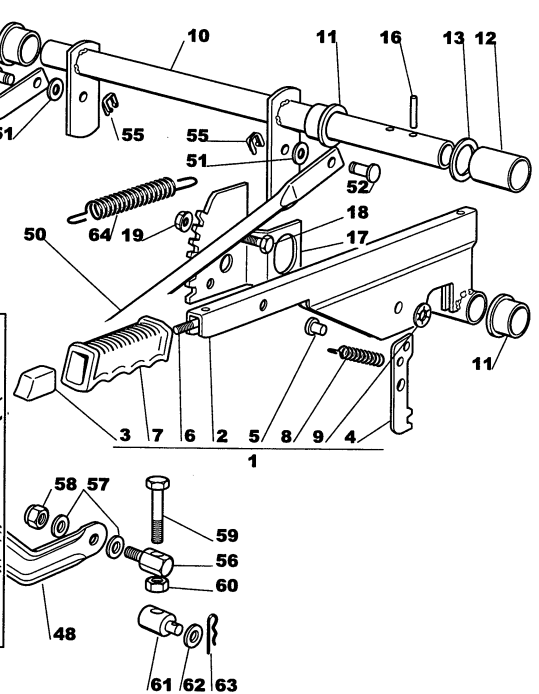
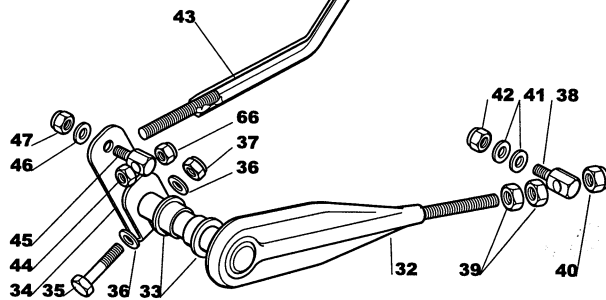
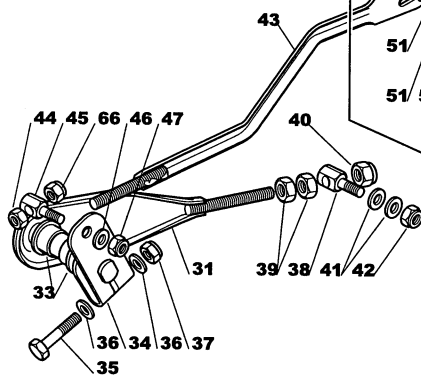
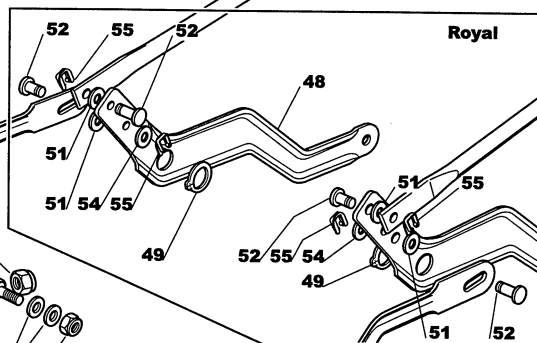
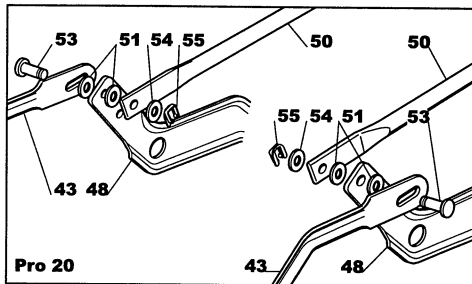
Utgåva Issue  2003- 11		Bildnr Picture No  1560		ESTATE ROYAL MOTOR		ESTATE ROYAL ENGINE		Sida Page  128	
Pos. Fig.	Antal/Quantity				Art nr Part No	Benämning	Description	Sats Kit	Anmärkning Notes
	2533								
2	1				1136- 0354- 01	Bränsleslang.....	Fuel hose.....		
3	1				1136- 0045- 01	Slangklämma.....	Hose clamp.....		
4	1				1136- 0046- 01	Slangklämma.....	Hose clamp.....		
5	1				1136- 0273- 01	Oljeavtappningsrör .....	Oil drain tube .....		
6	1				1136- 0066- 01	Oljeavtappningsplugg .....	Oil drain plug .....		
7	2				1136- 0054- 01	Tätningsring .....	Oil seal .....		
8	3				9997- 0835- 12	Skruv .....	Screw .....		
9	2				9677- 0009- 02	Låsbricka .....	Lock washer .....		
10	1				9799- 0831- 02	Mutter .....	Nut .....		
11	3				9739- 0831- 22	Mutter .....	Nut .....		
12	1				1136- 0067- 01	Avgasrör .....	Exhaust tube .....		
13	2				9683- 0030- 02	Låsbricka .....	Lock washer .....		
14	2				9988- 3619- 16	Skruv .....	Screw .....		
15	1				9997- 0840- 16	Skruv .....	Screw .....		
31	1				1136- 1054- 01	Ljuddämpare .....	Muffler .....		
32	2				9997- 0820- 16	Skruv .....	Screw .....		
33	2				9677- 0009- 02	Låsbricka .....	Lock washer .....		
34	2				1136- 0004- 01	Fyrkantmutter .....	Square nut .....		
35	1				1136- 1048- 01	Skydd .....	Guard .....		
36	2				9997- 0816- 16	Skruv .....	Screw .....		
37	2				9683- 0030- 02	Låsbricka .....	Lock washer .....		



Utgåva Issue  2003- 11		Bildnr Picture No  1450		ESTATE PRO 20 MOTOR		ESTATE PRO 20 ENGINE		Sida Page  130	
Pos. Fig.	Antal/Quantity				Art nr Part No	Benämning	Description	Sats Kit	Anmärkning Notes
	2535								
2	1				1136- 0354- 01	Bränsleslang .....	Fuel hose.....		
3	1				1136- 0045- 01	Slangklämma .....	Hose clamp .....		
4	1				1136- 0046- 01	Slangklämma .....	Hose clamp .....		
5	1				1136- 0273- 01	Oljeavtappningsrör .....	Oil drain tube .....		
6	1				1136- 0066- 01	Oljeavtappningsplugg .....	Oil drain plug .....		
7	2				1136- 0054- 01	Tätningsring .....	Oil seal .....		
8	1				9997- 0840- 16	Skruv .....	Screw .....		
9	2				9677- 0009- 02	Låsbricka .....	Lock washer .....		
10	1				9799- 0831- 02	Mutter .....	Nut .....		
11	3				9997- 0835- 12	Skruv .....	Screw .....		
12	3				9739- 0831- 22	Mutter .....	Nut .....		
13	1				1136- 0843- 01	Avgasrör- hö .....	Exhaust pipe- RH.....		
14	1				1136- 0844- 01	Avgasrör- vä .....	Exhaust pipe- LH .....		
15	4				9988- 3619- 16	Skruv .....	Screw .....		
16	4				9683- 0030- 02	Låsbricka .....	Lock washer .....		
17	3				9997- 0620- 16	Skruv .....	Screw .....		
18	3				9683- 0025- 02	Låsbricka .....	Lock washer .....		
31	1				1136- 1053- 01	Ljuddämpare .....	Muffler .....		
32	2				9997- 0820- 16	Skruv .....	Screw .....		
33	2				9677- 0009- 02	Låsbricka .....	Lock washer .....		
34	2				1136- 0004- 01	Fyrkantmutter .....	Square nut .....		
35	1				1136- 1047- 01	Skydd .....	Guard .....		
36	2				9997- 0816- 16	Skruv .....	Screw .....		
37	2				9683- 0030- 02	Låsbricka .....	Lock washer.....		



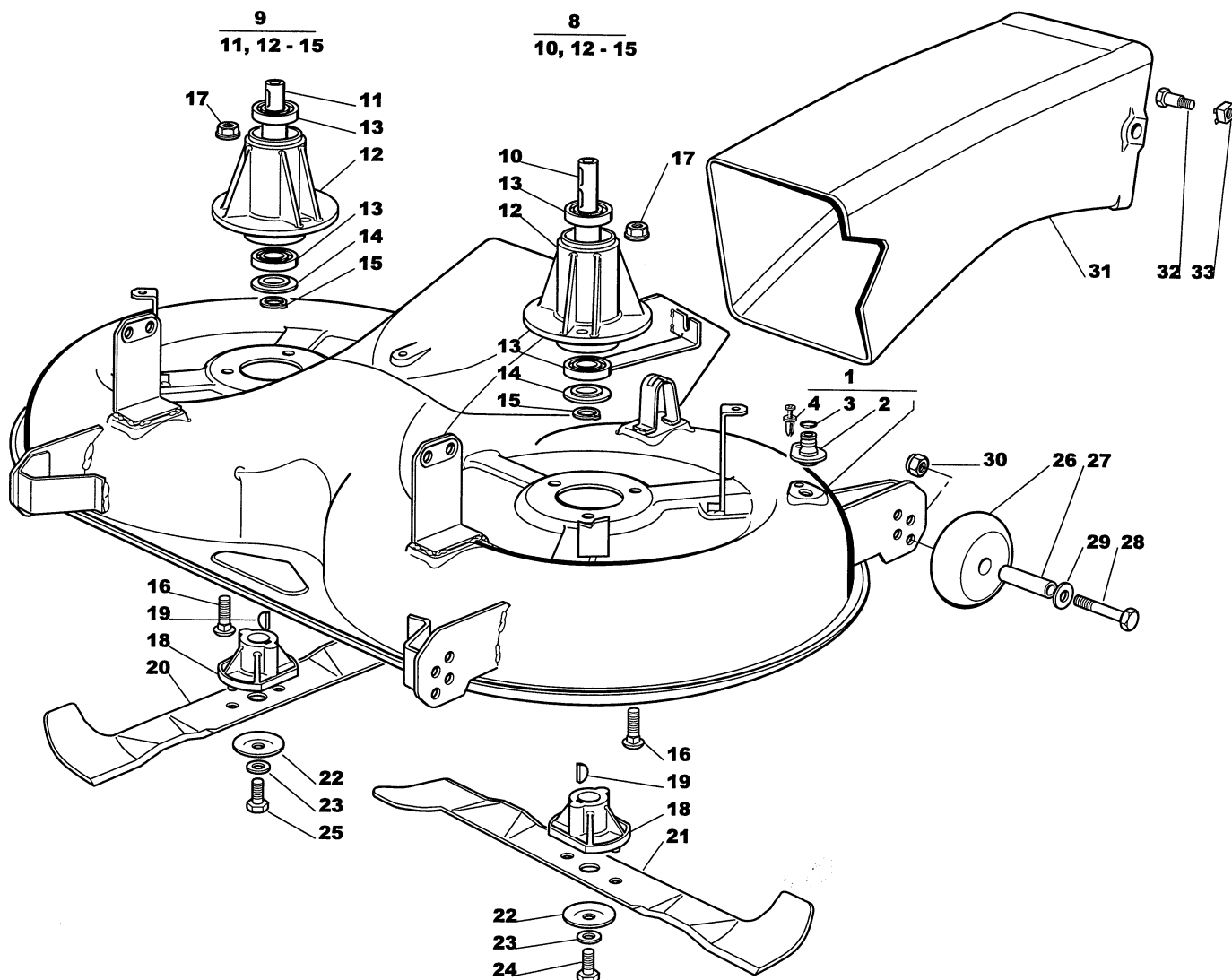
Utgåva Issue 2003- 11		Bildnr Picture No 1242A		ESTATE ROYAL ESTATE PRO 20 TRANSMISSION		ESTATE ROYAL ESTATE PRO 20 TRANSMISSION		Sida Page 132	
Pos. Fig.	Antal/Quantity				Art nr Part No	Benämning	Description	Sats Kit	Anmärkning Notes
	2533			2535					
1	1				1136- 0297- 01	Motorremskiva .....	Engine belt pulley .....	Kanzaki K46F	
2	1				9987- 5376- 12	Skruv .....	Screw .....		
3	1				9683- 0045- 02	Bricka .....	Washer .....		
4	1				1136- 0434- 01	Kilrem .....	V- belt .....		
5	1				1136- 0499- 01	Spännarm .....	Tension arm .....		
6	1				9997- 0875- 12	Skruv .....	Screw .....		
7	2				1136- 0123- 01	Bussning .....	Bushing .....		
8	1				9747- 0831- 02	Mutter .....	Lock nut .....		
9	1				1136- 0173- 01	Distans .....	Spacer .....		
10	1				1136- 0289- 01	Spännrulle .....	Idler pulley .....		
11	1				9699- 0056- 02	Planbricka .....	Flat washer .....		
12	1				9747- 0831- 02	Mutter .....	Lock nut .....		
13	1				1136- 0351- 01	Spännstång .....	Tie rod .....		
14	2				9799- 0831- 02	Mutter .....	Nut .....		
15	1				1136- 0208- 01	Fjäder .....	Spring .....		
17	1				1136- 0290- 01	Remrulle .....	Belt roller .....		
18	1				1136- 0234- 01	Pinnbult .....	Stud bolt .....		
19	1				9699- 0056- 02	Planbricka .....	Flat washer .....		
20	2				9747- 0831- 02	Mutter .....	Lock nut .....		
21	2				1136- 0915- 01	Remrulle .....	Belt roller .....		
22	1				1136- 0174- 01	Distans- vä .....	Spacer- LH .....		
23	1				1136- 0170- 01	Distans- hö .....	Spacer- RH .....		
24	1				9997- 0840- 16	Skruv .....	Screw .....		
25	1				9997- 0850- 16	Skruv .....	Screw .....		
26	2				9699- 0056- 02	Planbricka .....	Flat washer .....		
27	2				9747- 0831- 02	Mutter .....	Lock nut .....		
28	2				1136- 0868- 01	Lock .....	Cover .....		
29	1				1136- 0168- 01	Distans .....	Spacer .....		
30	1				1136- 0048- 01	Elektromagn. koppling .....	Elektromagn. clutch .....		
31	1				1136- 0204- 01	Fjäder .....	Spring .....		
41	1				1136- 0052- 01	Transaxel .....	Transaxle .....		
42	4				9997- 0860- 16	Skruv .....	Screw .....		
44	4				9739- 0831- 22	Mutter .....	Nut .....		
45	1				1136- 0542- 01	Fäste .....	Support .....		
46	1				9997- 0845- 12	Skruv .....	Screw .....		
47	2				9699- 0090- 02	Planbricka .....	Flat washer .....		
48	1				9747- 0831- 02	Mutter .....	Lock nut .....		
49	2				9847- 8216- 16	Skruv .....	Screw .....		
50	1				9997- 0816- 16	Skruv .....	Screw .....		
51	1				9739- 0831- 22	Mutter .....	Nut .....		
52	1				1136- 0190- 01	Arm .....	Lever .....		
53	1				9997- 0820- 16	Skruv .....	Screw .....		
54	1				1136- 0006- 01	Fjäderbricka .....	Elastic washer .....		
55	1				1136- 0309- 01	Bricka .....	Washer .....		
56	1				9747- 0831- 02	Mutter .....	Lock nut .....		
57	1				1136- 0114- 01	Stag .....	Rod .....		
58	1				9675- 0009- 02	Starlock .....	Starlock .....		
72	2				1136- 0455- 01	Fälg .....	Rim .....		
73	2				1136- 0270- 01	Däck (Turf Saver) .....	Tire (Turf Saver) .....		
73	2				1136- 0272- 01	Däck (Deli) .....	Tire (Deli) .....		
74	2				9545- 0500- 00	Ventil .....	Valve .....		
75	4				1136- 0305- 01	Bricka .....	Washer .....		
76	2				1136- 0169- 01	Distans .....	Spacer .....		
77	2				1136- 0312- 01	Bricka .....	Washer .....		
78	2				9652- 0015- 04	Låsring .....	Retaining ring .....		
79	2				1136- 0081- 01	Navkapsel .....	Hub cap .....		



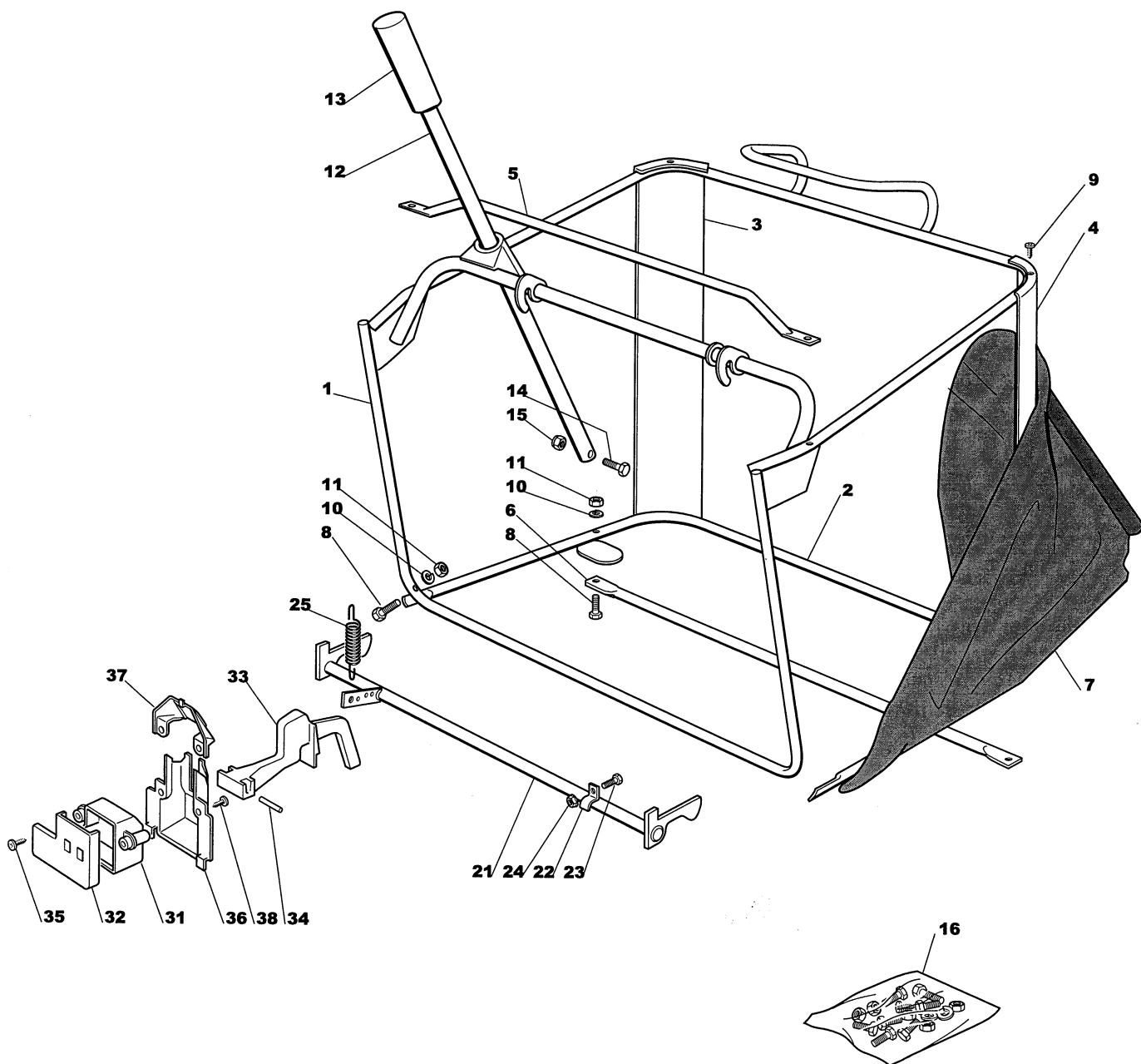
Utgåva Issue  2003- 11		Bildnr Picture No  1243A		ESTATE ROYAL ESTATE PRO 20 AGGREGATSLYFT		ESTATE ROYAL ESTATE PRO 20 MOWER DECK LIFT		Sida Page  134	
Pos. Fig.	Antal/Quantity				Art nr Part No	Benämning	Description	Sats Kit	Anmärkning Notes
	2533	2535							
1	1	1			1136-0487-01	Lyftspak kpl .....	Lift lever assy.....		Inkl. pos 2 - 9
2	1	1			1136-0493-01	• Lyftspak .....	• Lift lever .....		
3	1	1			1136-0298-01	• Tryckknapp .....	• Button .....		
4	1	1			1136-0222-01	• Spärrhake .....	• Dog .....		
5	1	1			1136-0227-01	• Sprint.....	• Pin.....		
6	1	1			1136-0105-01	• Tryckstång .....	• Push rod .....		
7	1	1			1136-0193-01	• Handtag .....	• Handle.....		
8	1	1			1136-0203-01	• Fjäder.....	• Spring .....		
9	1	1			9675-0012-02	• Starlock .....	• Locking washer.....		
10	1	1			1136-0450-01	Lyftaxel.....	Lift axle .....		
11	3	3			1136-0078-01	Bussning .....	Bushing.....		
12	1	1			1136-0171-01	Distans .....	Spacer.....		
13	1	1			1136-0090-01	Bricka .....	Washer.....		
14	1	1			9699-0119-02	Bricka .....	Washer.....		
15	1	1			9650-0020-04	Spärring.....	Circlip.....		
16	2	2			9595-0235-00	Spännstift .....	Locating pin .....		
17	1	1			1136-0319-01	Höjdställn.segment.....	Height adjust sector .....		
18	2	2			9997-0816-16	Skruv .....	Screw .....		
19	2	2			9739-0831-22	Mutter.....	Nut.....		
31	1				1136-0497-01	Lyftarm fram- hö.....	Lift lever front- RH .....		
31		1			1136-1041-01	Lyftarm fram- hö.....	Lift lever front- RH .....		
32	1				1136-0498-01	Lyftarm fram- vä.....	Lift lever front- LH .....		
32		1			1136-1042-01	Lyftarm fram- vä.....	Lift lever front- LH .....		
33	4	4			1136-0127-01	Bussning .....	Bushing.....		
34	2	2			1136-0191-01	Lyftarm .....	Lift arm .....		
35	2	2			9997-0890-12	Skruv .....	Screw .....		
36	4	4			9699-0090-02	Planbricka.....	Flat washer.....		
37	2	2			9747-0831-02	Mutter.....	Lock nut.....		
38	2	2			1136-0243-01	Ledbult .....	Pivot bolt.....		
39	4	4			9799-1031-02	Mutter.....	Nut.....		
40	2	2			9747-1031-02	Låsmutter .....	Lock nut.....		
41	4	4			1136-0308-01	Bricka .....	Washer.....		
42	2	2			9747-1031-02	Låsmutter .....	Lock nut.....		
43	2	2			1136-0449-01	Förbindningsstång- fr.....	Connecting rod- front.....		
44	2	2			9747-0831-02	Mutter.....	Lock nut.....		
45	2	2			1136-0242-01	Ledbult .....	Pivot bolt.....		
46	2	2			9699-0090-02	Planbricka.....	Flat washer.....		
47	2	2			9747-0831-02	Mutter.....	Lock nut.....		
48	2	2			1136-0189-01	Lyftarm- bak .....	Lift lever- rear.....		
49	2	2			9650-0019-04	Låsring .....	Retainer ring .....		
50	2	2			1136-0112-01	Förbindningsstång- bak.....	Connecting rod- rear .....		
51	6	6			1136-0309-01	Bricka .....	Washer.....		
52	6	4			1136-0240-01	Sprint.....	Pin .....		
53		2			1136-0898-01	Sprint.....	Pin .....		
54	2	2			9699-0090-02	Planbricka.....	Flat washer.....		
55	6	4			1136-0009-01	Låsplatta.....	Lock plate .....		
56	2	2			1136-0243-01	Ledbult .....	Pivot bolt.....		
57	4	4			1136-0308-01	Bricka .....	Washer.....		
58	2	2			9747-1031-02	Låsmutter .....	Lock nut.....		
59	2	2			9997-1010-02	Skruv .....	Screw .....		
60	2	2			9799-1031-02	Mutter.....	Nut.....		
61	2	2			1136-0899-01	Ledbult .....	Pivot bolt.....		
62	2	2			1136-0808-01	Bricka .....	Washer.....		
63	2	2			1136-1129-01	Låsnål.....	Cotter pin .....		
64	1	1			1136-0207-01	Fjäder.....	Spring .....		
66	2	2			9799-0831-02	Mutter.....	Nut.....		



Utgåva Issue  2003- 11		Bildnr Picture No  1244		ESTATE ROYAL ESTATE PRO 20 AGGREGATSINKOPPLING		ESTATE ROYAL ESTATE PRO 20 MOWER DECK ENGAGEMENT		Sida Page  136	
Pos. Fig.	Antal/Quantity				Art nr Part No	Benämning	Description	Sats Kit	Anmärkning Notes
	2533	2535							
1	1				1136- 0513- 01	Remtransm.platta .....	Belt transm. plate .....		
1		1			1136- 1043- 01	Remtransm.platta .....	Belt transm. plate .....		
2	4	4			9997- 0816- 16	Skruv .....	Screw .....		
3	4	4			9739- 0831- 22	Mutter .....	Nut .....		
4	1	1			1136- 0539- 01	Fäste .....	Support .....		
5	2				1136- 0293- 01	Remrulle .....	Belt roller .....		
5		2			1136- 0913- 01	Remrulle .....	Belt roller .....		
6	2	2			1136- 0070- 01	Kullager .....	Ball bearing .....		
7	2	2			9651- 0035- 04	Låsring .....	Lock ring .....		
8	2	2			9650- 0015- 04	Låsring .....	Lock ring .....		
9	1	1			1136- 0299- 01	Förstärkning .....	Reinforcement .....		
10	2	2			9997- 0820- 16	Skruv .....	Screw .....		
11	2	2			9699- 0090- 02	Planbricka .....	Flat washer .....		
12	2	2			9683- 0030- 02	Låsbricka .....	Lock washer .....		
13	4	4			1136- 0159- 01	Distans .....	Spacer .....		
14	4	4			1136- 0122- 01	Bussning .....	Bushing .....		
15	1	1			9997- 0890- 12	Skruv .....	Screw .....		
16	3	3			9997- 0845- 12	Skruv .....	Screw .....		
17	5	5			9699- 0090- 02	Planbricka .....	Flat washer .....		
18	4	4			9747- 0831- 02	Mutter .....	Lock nut .....		
19	1	1			9997- 0860- 16	Skruv .....	Screw .....		
20	1	1			9799- 0831- 02	Mutter .....	Nut .....		
21	2				1136- 0294- 01	Kuggremskiva .....	Toothed belt pulley .....		
21		2			1136- 0914- 01	Kuggremskiva .....	Toothed belt pulley .....		
22	3	3			1136- 0001- 01	Kil .....	Key .....		
23	1	1			9997- 0820- 16	Skruv .....	Screw .....		
24	1	1			1136- 0307- 01	Bricka .....	Washer .....		
25	1	1			9683- 0030- 02	Låsbricka .....	Lock washer .....		
26	1				1136- 0436- 01	Kuggrem .....	Toothed belt .....		
26		1			1136- 1024- 01	Kuggrem .....	Toothed belt .....		
27	3	3			9898- 0616- 16	Skruv .....	Screw .....		
28	3	3			9739- 0631- 22	Mutter .....	Nut .....		
29	1				1136- 0129- 01	Remhus .....	Belt housing .....		
29		1			1136- 0863- 01	Remhus .....	Belt housing .....		
30	6	6			9848- 8013- 16	Skruv .....	Screw .....		
31	1				1136- 0288- 01	Remskiva .....	Belt pulley .....		
31		1			1136- 0912- 01	Remskiva .....	Belt pulley .....		
32	1	1			9997- 0820- 16	Skruv .....	Screw .....		
33	1	1			1136- 0307- 01	Bricka .....	Washer .....		
34	1	1			9683- 0030- 02	Låsbricka .....	Lock washer .....		
35	1	1			1136- 0158- 01	Distans .....	Spacer .....		
36	1				1136- 0185- 01	Bromsarm .....	Brake lever .....		
36		1			1136- 0884- 01	Bromsarm .....	Brake lever .....		
40	1	1			1136- 0290- 01	Remrulle .....	Belt roller .....		
41	1	1			1136- 0161- 01	Distans .....	Spacer .....		
42	1	1			9898- 0835- 12	Skruv .....	Screw .....		
43	1	1			9699- 0056- 02	Planbricka .....	Flat washer .....		
44	1	1			9747- 0831- 02	Mutter .....	Lock nut .....		
45	1	1			9997- 0820- 16	Skruv .....	Screw .....		
46	1	1			1136- 0014- 01	Bricka .....	Washer .....		
47	1	1			9683- 0030- 02	Låsbricka .....	Lock washer .....		
48	1				1136- 0435- 01	Kilrem .....	V- belt .....		
48		1			1136- 1023- 01	Kilrem .....	V- belt .....		
61	1				1136- 0284- 01	Remskydd .....	Belt guard .....		
61		1			1136- 0908- 01	Remskydd .....	Belt guard .....		
62	3	3			1136- 0816- 01	Skruv .....	Screw .....		
91	1				1136- 0462- 01	Wire .....	Wire .....		
91		1			1136- 1034- 01	Wire .....	Wire .....		

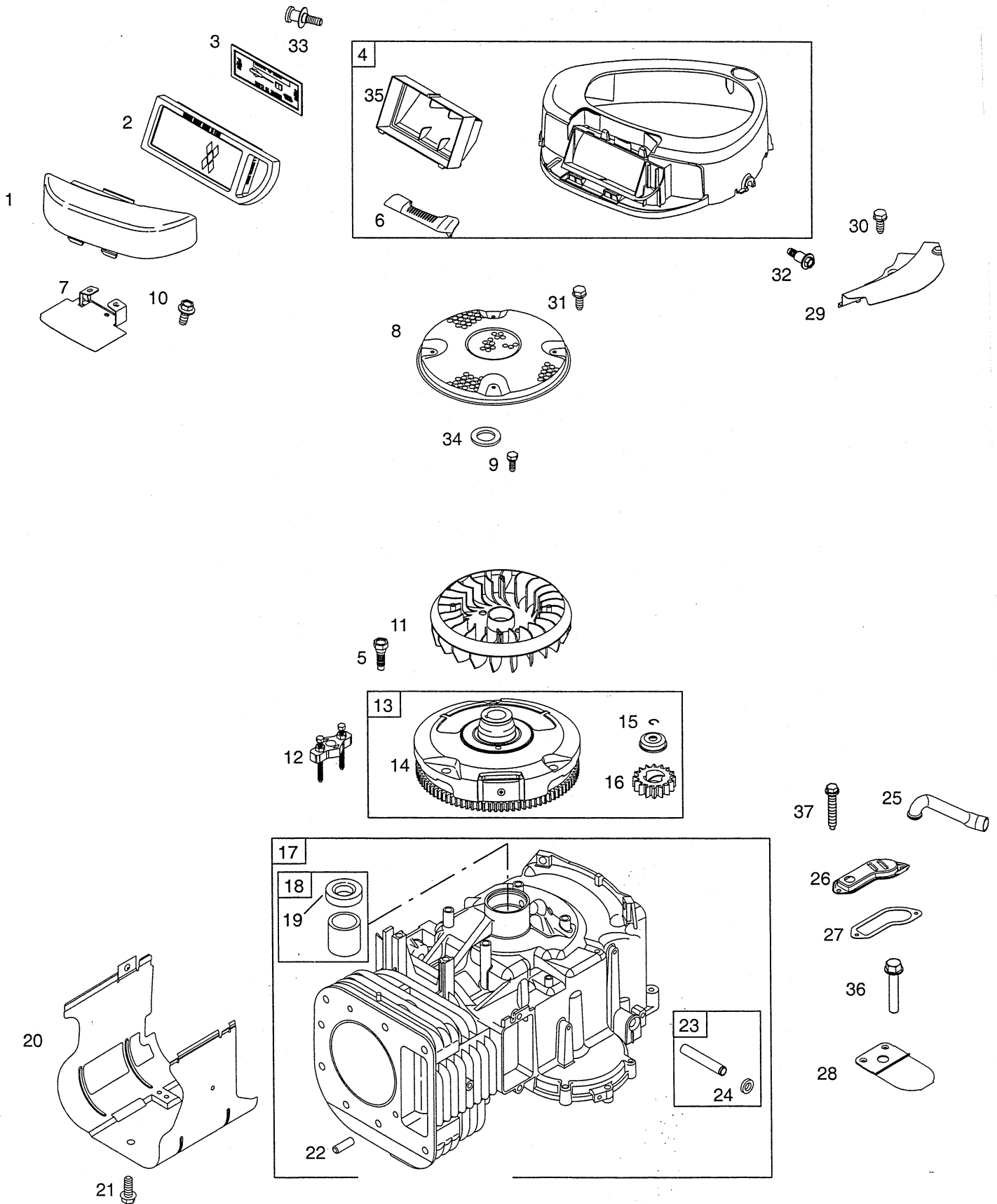


Utgåva Issue 2003- 11		Bildnr Picture No 1245A		ESTATE ROYAL ESTATE PRO 20 KLIPPAGGREGAT		ESTATE ROYAL ESTATE PRO 20 MOWER DECK		Sida Page 138	
Pos. Fig.	Antal/Quantity				Art nr Part No	Benämning	Description	Sats Kit	Anmärkning Notes
	2533	2535							
1	1				1136- 1045- 01	Klippagggregatskåpa .....	Mower deck casing .....		Inkl. pos 2 - 4
1		1			1136- 1046- 01	Klippagggregatskåpa .....	Mower deck casing .....		Inkl. pos 2 - 4
2	2	2			1136- 0120- 01	• Vattenslangnippel .....	• Water hose connection.....		
3	2	2			1136- 0068- 01	• O- ring.....	• O- ring .....		
4	2	2			1136- 0012- 01	• Nit.....	• Rivet.....		
8	1	1			1136- 0479- 01	Lagerbox kpl.....	Bearing box assy.....		Inkl. pos 10, 12 - 15
9	1	1			1136- 0480- 01	Lagerbox kpl.....	Bearing box assy.....		Inkl. pos 11, 12 - 15
10	1	1			1136- 0097- 01	• Knivaxel .....	• Blade shaft .....		
11	1	1			1136- 0098- 01	• Knivaxel .....	• Blade shaft .....		
13	4	4			1136- 0069- 01	• Kullager .....	• Ball bearing .....		
14	2	2			1136- 0176- 01	• Dammskydd .....	• Dust cover.....		
15	2	2			9650- 0020- 04	• Spårning.....	• Circlip .....		
16	6	6			9898- 0825- 16	Skruv .....	Screw .....		
17	6	6			9739- 0831- 22	Mutter.....	Nut .....		
18	2	2			1136- 0221- 01	Knivfäste.....	Blade hub .....		
19	2	2			9600- 0014- 00	Kil .....	Key .....		
20	1				1136- 1031- 01	Kniv- hö .....	Blade- RH .....		
20		1			1136- 1033- 01	Kniv- hö .....	Blade- RH .....		
21	1				1136- 1030- 01	Kniv- vä.....	Blade- LH .....		
21		1			1136- 1032- 01	Kniv- vä.....	Blade- LH .....		
22	2	2			1136- 0083- 01	Fjäderbricka .....	Elastic washer .....		
23	2	2			1136- 0015- 01	Bricka .....	Washer .....		
24	1	1			9987- 5238- 12	Knivbult .....	Blade bolt.....		
25	1	1			1136- 0018- 01	Knivbult (vå- gängad) .....	Blade bolt (L thread) .....		
26	4	4			1136- 1052- 01	Stödhjul .....	Anti scalp wheel .....		
27	4	4			1136- 0900- 01	Distans .....	Spacer.....		
28	4	4			9997- 0880- 16	Skruv .....	Screw .....		
29	4	4			9699- 0056- 02	Planbricka.....	Flat washer.....		
30	4	4			9739- 0831- 22	Mutter.....	Nut .....		
31	1	1			1136- 0140- 01	Utkaströr .....	Discharge chute .....		
32	2	2			1136- 0238- 01	Bult.....	Pin bolt .....		
33	2	2			1136- 0004- 01	Fyrkantmutter .....	Square nut .....		



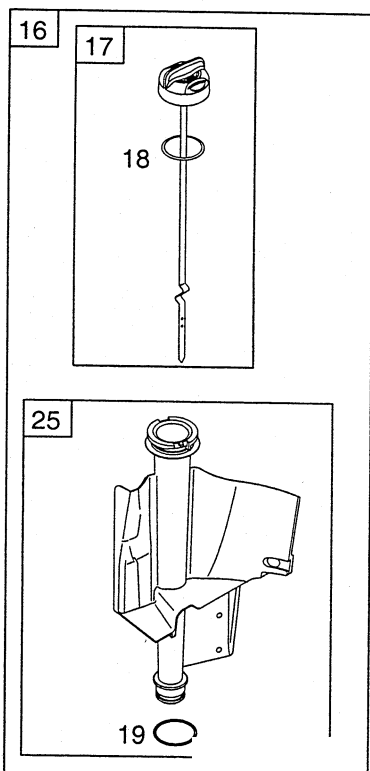
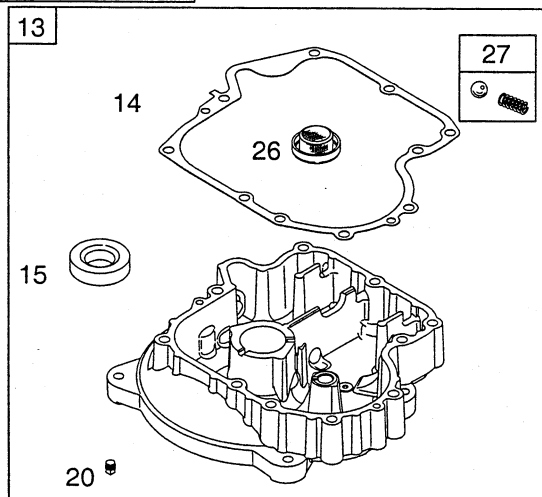
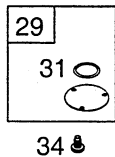
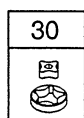
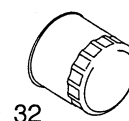
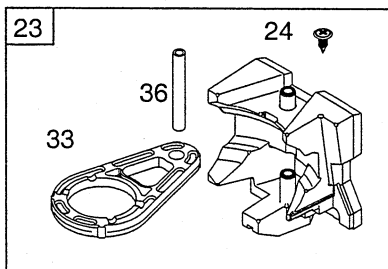
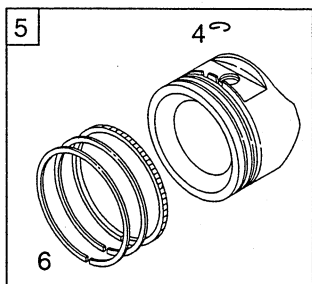
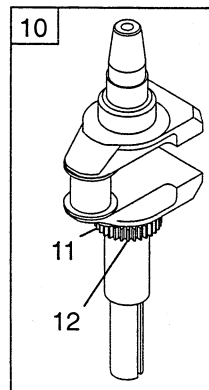
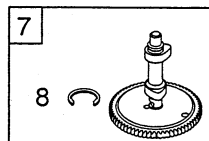
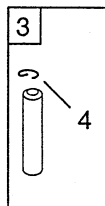
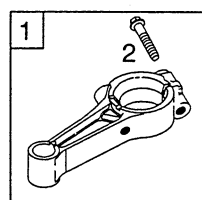
Utgåva Issue 2003- 11		Bildnr Picture No 1246A		ESTATE ROYAL ESTATE PRO 20 UPPSAMLARE		ESTATE ROYAL ESTATE PRO 20 GRASS CATCHER		Sida Page 140	
Pos. Fig.	Antal/Quantity				Art nr Part No	Benämning	Description	Sats Kit	Anmärkning Notes
	2533 2535								
1	1				1136-0550-01	Ram- övre.....	Frame- upper.....		Inkl. pos 8-11,14-15
2	1				1136-0544-01	Ram- nedre.....	Frame- lower.....		
3	1				1136-0101-01	Vinkelstöd- hö.....	Angle support- RH.....		
4	1				1136-0102-01	Vinkelstöd- vä.....	Angle support- LH.....		
5	1				1136-0501-01	Handtag- främre.....	Handle- front.....		
6	1				1136-0522-01	Förstärkningsstag.....	Reinforcement rod.....		
7	1				1136-0474-01	Uppsamlingsäck.....	Grass bag.....		
8	4				9997-0630-12	• Skruv.....	• Screw.....		
9	4				9847-8116-16	• Skruv.....	• Screw.....		
10	4				9683-0010-02	• Bricka.....	• Washer.....		
11	4				9799-0631-02	• Mutter.....	• Nut.....		
12	1				1136-0355-01	Spak.....	Lever.....		
13	1				1136-0195-01	Handtag.....	Handle.....		
14	1				9997-0630-12	• Skruv.....	• Screw.....		
15	1				9747-0631-02	• Låsmutter.....	• Lock nut.....		
16	1				1136-0600-01	Skrusats.....	Screw set.....		
21	1				1136-0452-01	Spärrstång.....	Catch rod.....		
22	2				1136-0324-01	Bygel.....	Clamp.....		
23	2				9997-0616-16	Skruv.....	Screw.....		
24	2				9739-0631-22	Mutter.....	Nut.....		
25	1				1136-0204-01	Fjäder.....	Spring.....		
31	1				1136-0280-01	Brytarskydd.....	Micro protection.....		
32	1				1136-0281-01	Skyddslock.....	Protection cover.....		
33	1				1136-0186-01	Brytarm.....	Switch lever.....		
34	1				1136-0007-01	Axel.....	Pin.....		
35	1				9847-8013-16	Skruv.....	Screw.....		
36	1				1136-0282-01	Brytarskydd.....	Micro protection.....		
37	1				1136-0283-01	Skyddslock.....	Protection cover.....		
38	2				9847-8019-16	Skruv.....	Screw.....		

A



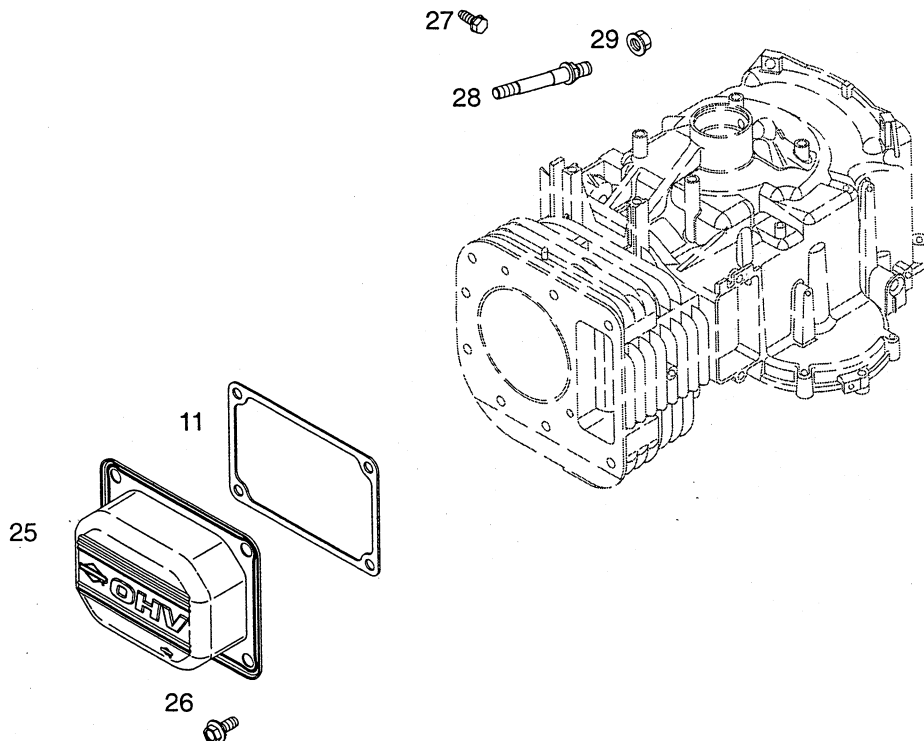
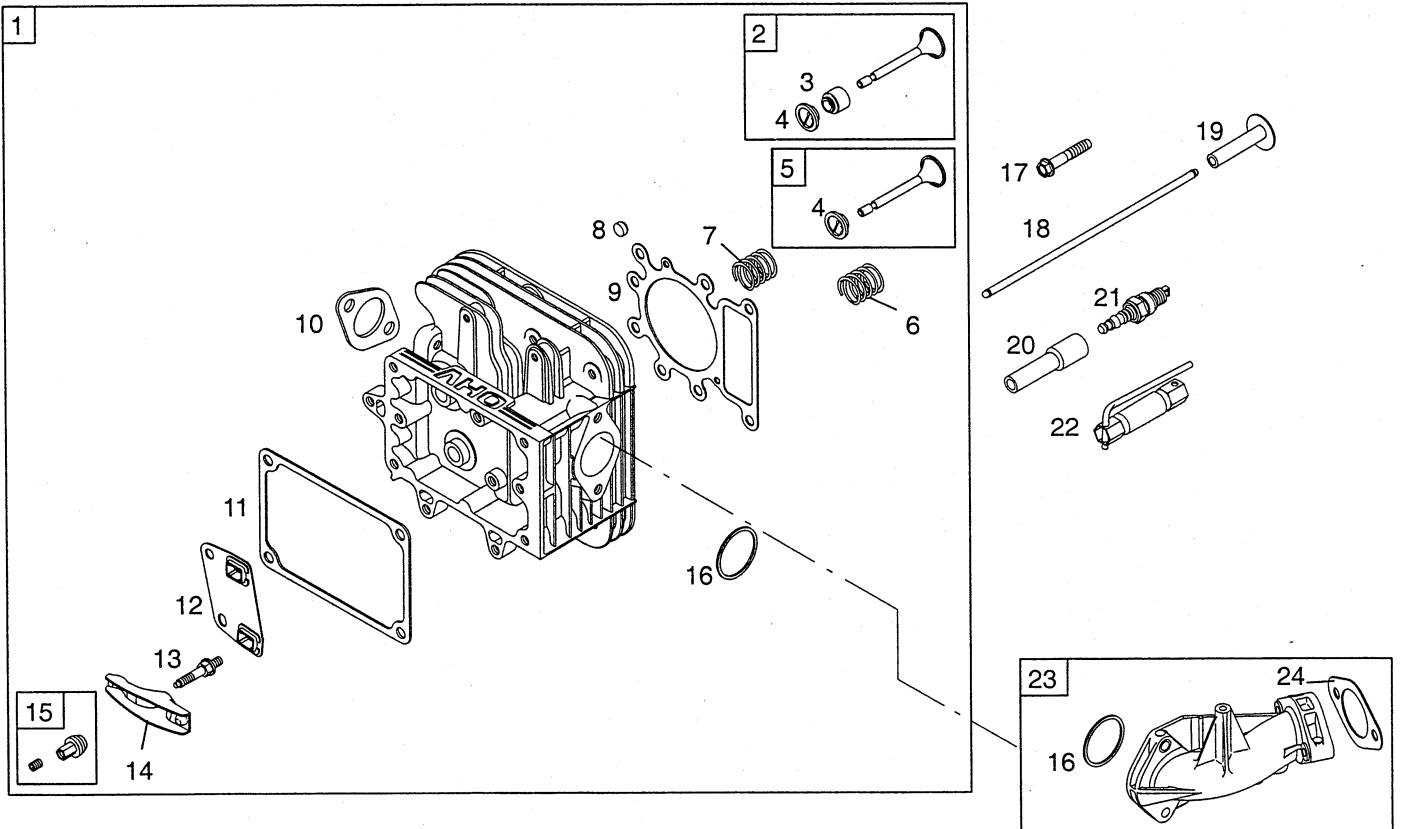
Utgåva Issue		Bildnr Picture No		BRIGGS & STRATTON 31G777 CYLINDER (A)		BRIGGS & STRATTON 31G777 CYLINDER (A)		Sida Page 218	
Pos. Fig.	Antal/Quantity				Art nr Part No	Benämning	Description	Sats Kit	Anmärkning Notes
	31G 777- 0120								
A01	1				697446	Kåpa .....	Cover .....		Inkl. pos 14
A02	1				698083	Filter .....	Filter .....		
A03	1				697015	Förfilter .....	Pre cleaner filter .....		
A04	1				698803	Fläkthus .....	Blower housing .....		
A05	1				691658	Skruv .....	Screw .....		
A06	1				697135	• Spärr .....	• Latch .....		
A07	1				697125	Stöd .....	Support .....		
A08	1				697133	Roterande skydd .....	Rotating screen .....		
A09	2				690372	Skruv .....	Screw .....		
A10	2				690960	Skruv .....	Screw .....		
A11	1				697111	Fläkt .....	Fan .....		
A12	1				19203	Avdragare .....	Puller .....		
A13	1				693556	Svänghjul .....	Flywheel .....		
A15	1				691265	• Låsring .....	• Retaining ring .....		
A16	1				693713	• Drev .....	• Pinion gear .....		
A17	1				697174	Cylinder .....	Cylinder .....		
A18	1				399265	• Bussning .....	• Bushing .....		
A19	1				391086	• • Tätningsring .....	• • Seal .....		
A20	1				697107	Skydd .....	Cylinder shield .....		
A21	1				691003	Skruv .....	Screw .....		
A22	2				690959	• Tapp .....	• Locating pin .....		
A23	1				692407	• Tätning .....	• Seal .....		
A24	1				697144	• • Bussning .....	• • Bushing .....		
A25	1				697113	Ventilationsrör .....	Breather tube .....		
A26	1				697112	Lock .....	Cover .....		
A27	1				697109	Packning .....	Gasket .....		
A28	1				697124	Ventil .....	Breather reed .....		
A29	1				697108	Skydd .....	Flywheel guard .....		
A30	1				691003	Skruv .....	Screw .....		
A31	4				697897	Skruv .....	Screw .....		
A32	2				697102	Skruv .....	Screw .....		
A33	1				697103	Skruv .....	Screw .....		
A34	1				690582	Bricka .....	Washer .....		
A35	1				698401	• Hållare .....	• Retainer .....		
A36	2				697104	Skruv .....	Screw .....		
A37	2				697157	Skruv .....	Screw .....		

A



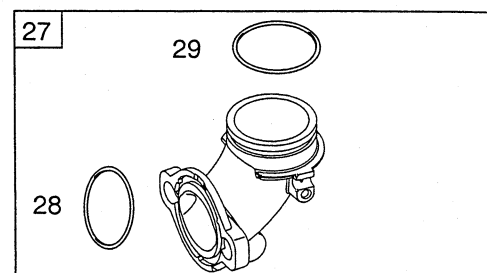
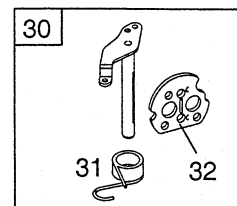
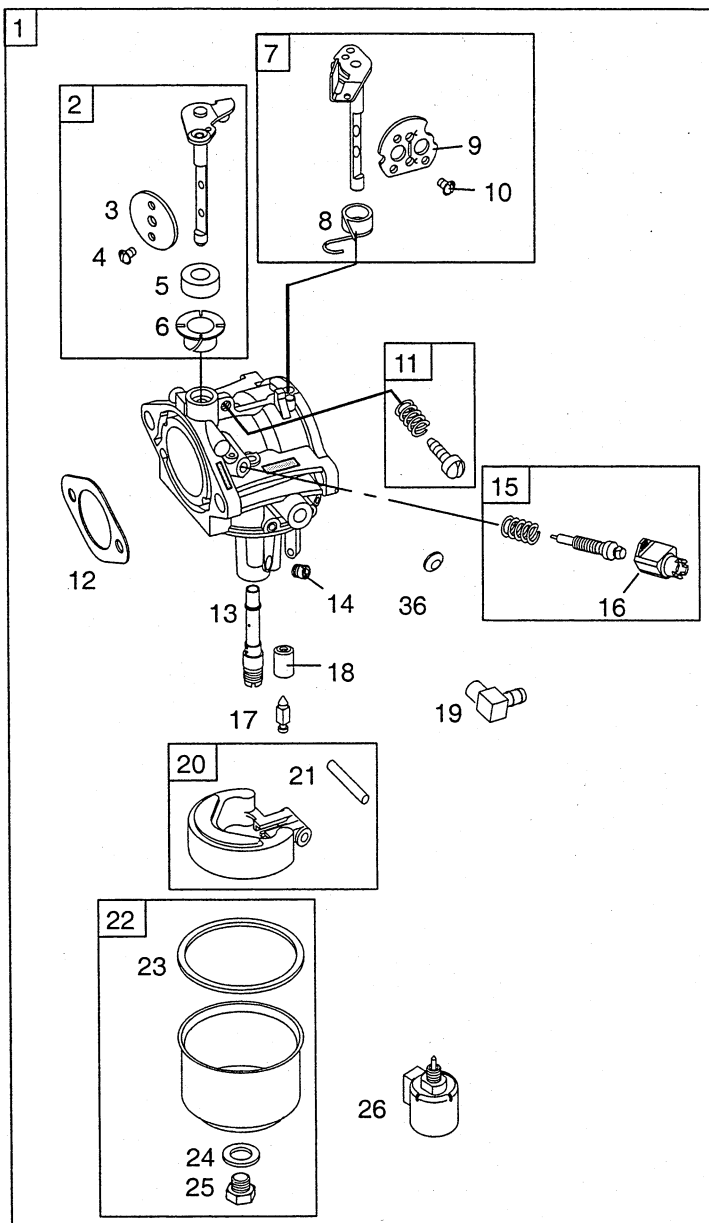
Utgåva Issue		Bildnr Picture No		BRIGGS & STRATTON 31G777 VEVAXEL (A)		BRIGGS & STRATTON 31G777 CRANKSHAFT (A)		Sida Page 220	
Pos. Fig.	Antal/Quantity				Art nr Part No	Benämning	Description	Sats Kit	Anmärkning Notes
	31G 777- 0120								
A01	1				697126	Vevstake .....	Connecting rod .....		Standard .020" undersize
A01	1				697263	Vevstake .....	Connecting rod .....		
A02	2				692852	• Skruv .....	• Screw .....		
A03	1				697099	Kolvbult .....	Piston pin.....		
A04	2				698469	• Låsring .....	• Lock .....		
A05	1				697159	Kolv kpl.....	Piston assy .....		Standard .010" oversize
A05	1				697160	Kolv kpl.....	Piston assy .....		
A05	1				697162	Kolv kpl.....	Piston assy .....		
A05	1				697163	Kolv kpl.....	Piston assy .....		.020" oversize
A06	1				697165	Kolvringssats.....	Ring set.....		.030" oversize
A06	1				697171	Kolvringssats.....	Ring set.....		.010" oversize
A06	1				697172	Kolvringssats.....	Ring set.....		.020" oversize
A06	1				697164	• Kolvringssats.....	• Ring set.....		.030" oversize
A07	1				698492	Kamaxel .....	Camshaft.....		Standard
A08	1				698802	• Låsring .....	• Retaining ring.....		
A09	1				691968	Oljekastardrev.....	Oil slinger.....		
A10	1				697127	Vevaxel .....	Crankshaft.....		
A11	1				697128	• Drev .....	• Timing gear .....		
A12	1				691639	• Kil .....	• Timing key.....		
A13	1				697188	Vevhus.....	Engine sump .....		
A14	1				697110	• Packning .....	• Gasket .....		
A15	1				690947	• Tättningsring .....	• Oil seal .....		
A16	1				697611	Oljesticka kpl .....	Oil dipstick assy .....		
A17	1				697086	• Oljesticka .....	• Oil dipstick .....		
A18	1				691031	•• O- ring.....	•• O- ring .....		
A19	1				691032	•• Tätning.....	•• Tube seal .....		
A20	1				690946	• Avtappningsplugg .....	• Oil drain plug .....		
A21	8				692125	Skruv .....	Screw .....		
A22	1				222698	Kil .....	Key.....		
A23	1				697134	Motvikt .....	Counterweight.....		
A24	2				697156	• Plugg .....	• Plug.....		
A25	1				697184	• Oljerör.....	• Dipstick tube .....		
A26	1				690770	• Oljepumpnät .....	• Oil pump screen .....		
A27	1				491710	• Kula .....	• Ball .....		
A28	1				690283	Oljvattappningsplugg.....	Oil drain plug .....		
A29	1				499613	Oljepumplock.....	Oil pump cover.....		
A30	1				499054	Oljepump .....	Oil pump .....		
A31	1				690589	• O- ringstättning .....	• O- ring seal .....		
A32	1				492932	Oljefilter .....	Oil filter .....		
A33	1				697607	• Länk.....	• Link .....		
A34	3				691033	Skruv .....	Screw .....		
A35	1				693784	Oljepumpaxel.....	Oil pump shaft .....		
A36	1				697392	• Axel.....	• Pin.....		

A

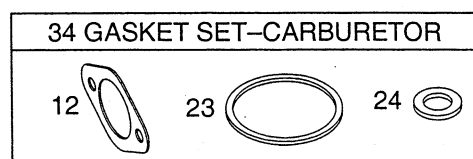
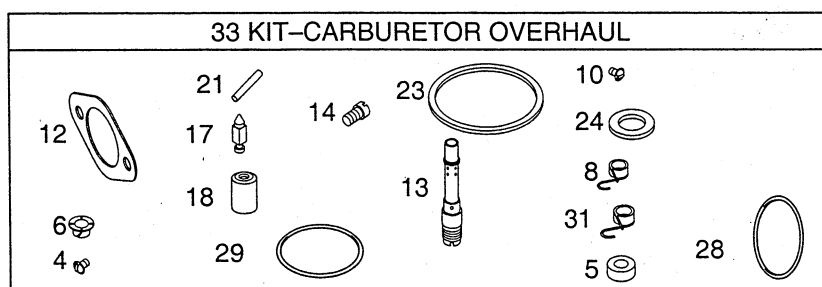


Utgåva Issue 2003- 11		Bildnr Picture No 1567		BRIGGS & STRATTON 31G777 TOPPLOCK (A)		BRIGGS & STRATTON 31G777 CYLINDER HEAD (A)		Sida Page 222	
Pos. Fig.	Antal/Quantity				Art nr Part No	Benämning	Description	Sats Kit	Anmärkning Notes
	31G 777- 0120								
A01	1				698147	Topplöck.....	Cylinder head .....		
A02	1				695761	• Insugningsventil .....	• Intake valve .....		
A03	1				690968	• Ventiltätning.....	• Valve seal .....		
A04	2				691752	• Ventilhållare .....	• Valve retainer .....		
A05	1				695760	• Utblåsningsventil .....	• Exhaust valve .....		
A06	1				691279	• Ventilfjäder .....	• Valve spring .....		
A07	1				691279	• Ventilfjäder .....	• Valve spring .....		
A08	1				691843	• Ventilhuv.....	• Valve cap .....		
A09	1				692410	• Packning .....	• Gasket .....		
A10	1				692236	• Packning.....	• Gasket .....		
A11	1				272475	• Packning.....	• Gasket .....		
A12	1				690822	• Stötstångsstyrning .....	• Push rod guide.....		
A13	4				691095	• Pinnbult .....	• Stud .....		
A14	2				691751	• Vipparm.....	• Rocker arm .....		
A15	2				691986	• Vipparmsjustering .....	• Rocker arm adjuster.....		
A16	1				692138	• O- ring.....	• O- ring .....		
A17	8				690360	Skruv .....	Screw .....		
A18	1				692003	Stötstång- insug .....	Push rod- intake .....		
A18	1				692011	Stötstång- utblås .....	Push rod- exhaust.....		
A19	2				690564	Ventillyftare .....	Valve tappet .....		
A20	1				691909	Tändstiftshylsa .....	Spark plug boot .....		
A21	1				9400- 0244- 00	Tändstift .....	Spark plug.....		
A22	1				89838	Tändstiftsnyckel.....	Spark plug wrench.....		
A23	1				690193	Insugningsrör .....	Intake manifold .....		
A24	1				692137	• Packning .....	• Gasket .....		
A25	1				692492	Ventilkåpa .....	Rocker cover .....		
A26	4				690960	Skruv .....	Screw .....		
A27	2				691148	Skruv .....	Screw .....		
A28	2				690227	Pinnbult.....	Stud .....		
A29	2				690958	Mutter.....	Nut .....		

A

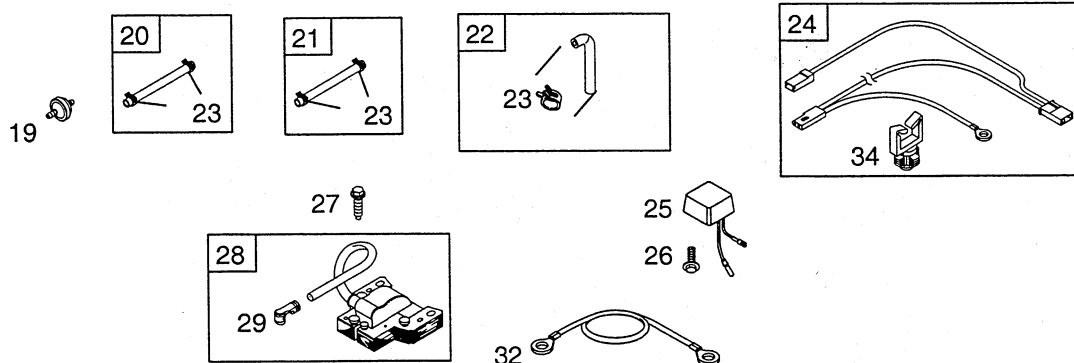
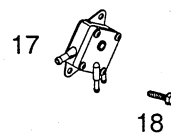
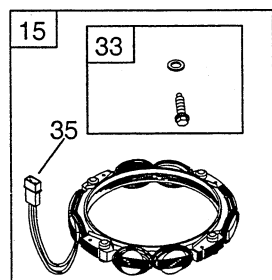
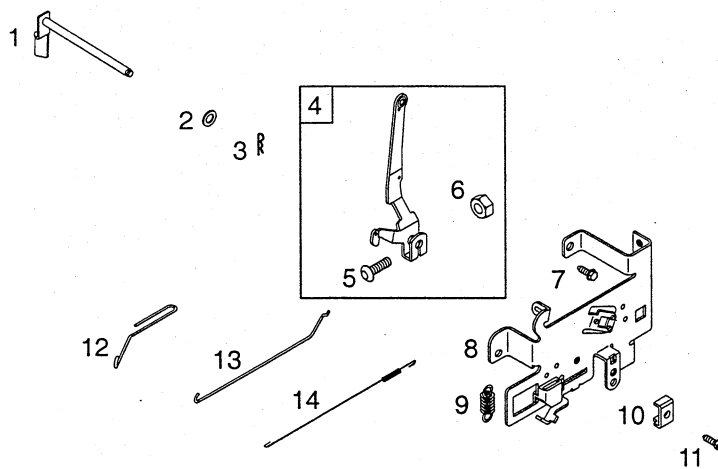


35



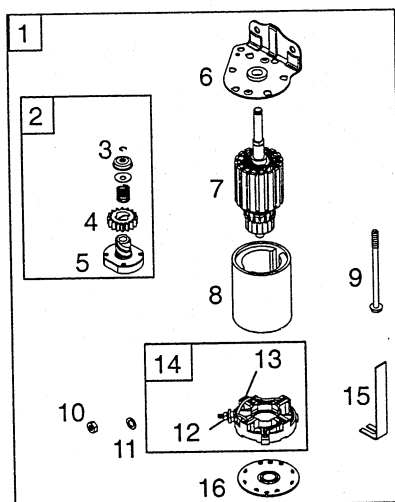
Utgåva Issue  2003- 11		Bildnr Picture No  1568		BRIGGS & STRATTON 31G777 FÖRGASARE (A)		BRIGGS & STRATTON 31G777 CARBURETTOR (A)		Sida Page  224	
Pos. Fig.	Antal/Quantity				Art nr Part No	Benämning	Description	Sats Kit	Anmärkning Notes
	31G 777- 0120								
A01	1				697190	Förgasare kpl.....	Carburettor assy .....		High altitude
A02	1				494379	• Spjällaxel .....	• Shaft .....		
A03	1				691750	•• Spjäll.....	•• Throttle valve.....		
A04	2				691636	•• Skruv .....	•• Screw .....		
A05	1				691326	•• Axeltätning .....	•• Shaft seal .....		
A06	1				690602	•• Axelbussning .....	•• Shaft bushing.....		
A07	1				495097	• Chokeaxel .....	• Choke shaft .....		
A08	1				690801	•• Fjäder o tätning.....	•• Spring and seal .....		
A09	1				690464	•• Chokespjäll .....	•• Choke valve .....		
A10	2				691636	•• Skruv .....	•• Screw .....		
A11	1				495800	• Justerskruv.....	• Idle adjust screw .....		
A12	1				692137	• Packning.....	• Gasket .....		
A13	1				697140	• Munstycke .....	• Nozzle .....		
A14	1				694352	• Huvudmunstycke.....	• Main jet .....		
A15	1				498030	• Nålventil.....	• Needle valve .....		
A16	1				691333	•• Begränsningshuv.....	•• Limiter cap .....		
A17	1				231855	• Nålventil.....	• Inlet needle valve.....		
A18	1				690577	• Säte .....	• Inlet seat .....		
A19	1				698174	• Nippel .....	• Hose connector .....		
A20	1				494381	• Flottör .....	• Float .....		
A21	1				690525	•• Flottöraxel.....	•• Float hinge pin.....		
A22	1				495933	• Flottörhus .....	• Bowl .....		
A23	1				281165	•• Packning.....	•• Gasket .....		
A24	1				692255	•• Tätningsbricka .....	•• Sealing washer .....		
A25	1				691657	•• Skruv .....	•• Float bowl screw .....		
A26	1				694393	• Solenoid .....	• Solenoid.....		
A27	1				697122	• Insugningsrör.....	• Intake elbow .....		
A28	1				691917	• O- ring.....	• O- ring .....		
A29	1				697123	• O- ring.....	• O- ring .....		
A30	1				495931	• Chokeaxel .....	• Choke shaft .....		
A31	1				690802	• Fjäder o tätning.....	• Spring and seal .....		
A32	1				692344	• Chokespjäll .....	• Choke valve.....		
A33	1				697241	• Rep.sats- förgasare.....	• Carb. overhaul kit.....		
A34	1				690192	• Packn.sats- förg.....	• Gasket set- carb. ....		
A35	1				697228	• Huvudmunstycke.....	• Main jet .....		
A36	1				695005	• Expansionsplugg .....	• Welch plug .....		

A



Utgåva Issue		Bildnr Picture No		BRIGGS & STRATTON 31G777 REGULATOR (A) TÄNDNING (A)		BRIGGS & STRATTON 31G777 GOVERNOR (A) IGNITION (A)		Sida Page 226	
Pos. Fig.	Antal/Quantity				Art nr Part No	Benämning	Description	Sats Kit	Anmärkning Notes
	31G 777- 0120								
A01	1				692012	Regulatoraxel.....	Governor crank .....		
A02	1				691691	Bricka .....	Washer .....		
A03	1				691620	Låsnål .....	Cotter pin .....		
A04	1				691374	Regulatorarm.....	Governor lever .....		
A05	1				691119	• Bult .....	• Bolt .....		
A06	1				691251	• Mutter .....	• Nut .....		
A07	2				691693	Skruv .....	Screw .....		
A08	1				694042	Reglageplåt.....	Control bracket .....		
A09	1				691795	Regulatorfjäder.....	Governor spring .....		
A10	1				691024	Klämma .....	Clamp .....		
A11	1				690804	Skruv .....	Screw .....		
A12	1				691840	Chokelänk.....	Choke link .....		
A13	1				691841	Regulatorlänk .....	Governor link .....		
A14	1				691842	Fjäder.....	Spring .....		
A15	1				696458	Generator.....	Alternator .....		
A16	4				691183	Skruv .....	Screw .....		
A17	1				697090	Bränslepump .....	Fuel pump .....		
A18	2				694476	Skruv .....	Screw .....		
A19	1				298090	Bränslefilter .....	Fuel filter .....		
A20	1				691050	Bränsleslang .....	Fuel line .....		
A21	1				697091	Vakumslang .....	Vacuum hose .....		
A22	1				697098	Bränsleslang .....	Fuel line.....		
A23	6				95162	• Slangklämma.....	• Hose clamp .....		
A24	1				692037	Kablage.....	Wiring harness.....		
A25	1				691185	Regulator.....	Regulator .....		
A26	1				697348	Skruv .....	Screw .....		
A27	2				691061	Skruv .....	Screw .....		
A28	1				492341	Tändsystem .....	Armature magneto .....		
A29	1				692424	• Anslutningskontakt.....	• Terminal .....		
A32	1				697089	Kabel .....	Stop wire.....		
A33	1				698516	• Skruv/bricka .....	• Screw/washer kit.....		
A34	1				691335	• Kabelklämma .....	• Wire clip .....		
A35	1				399916	• Anslutning .....	• Connector .....		

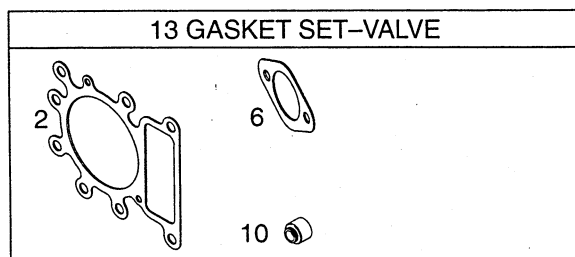
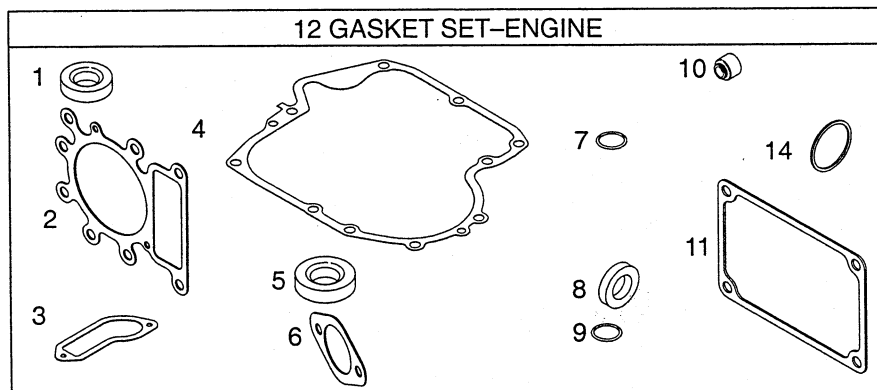
A



17  
18

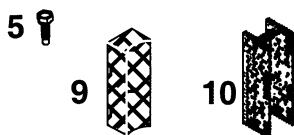
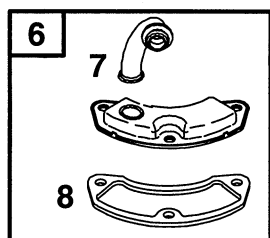
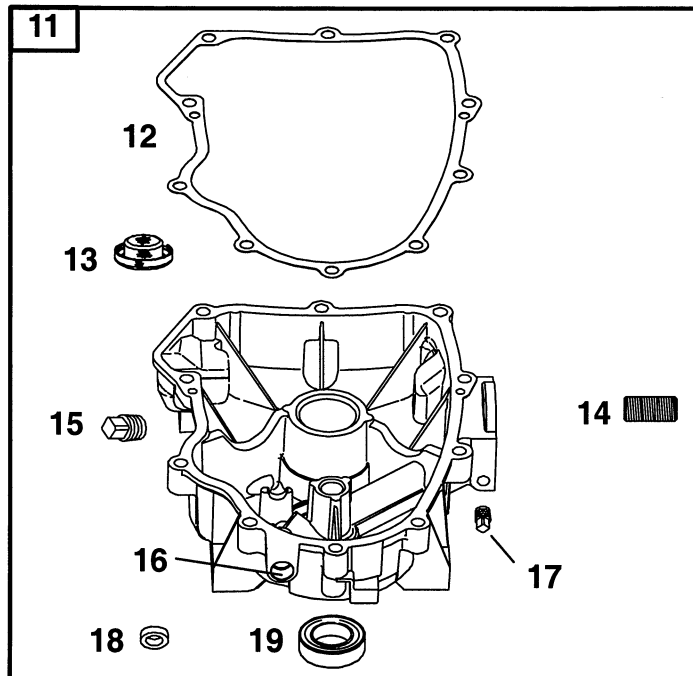
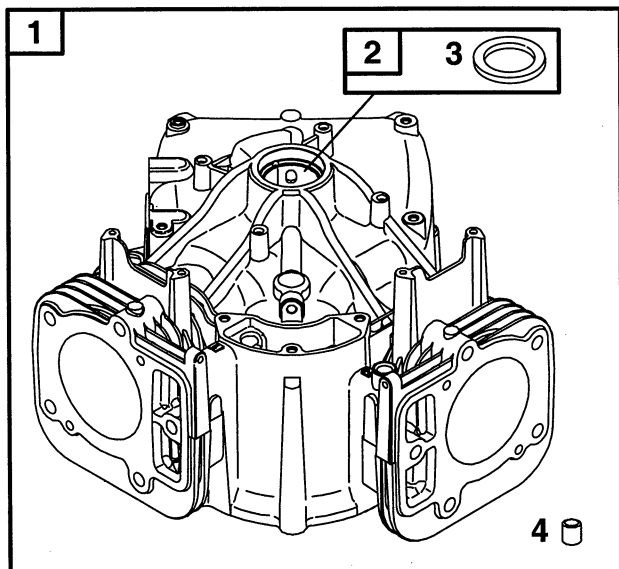
19

B

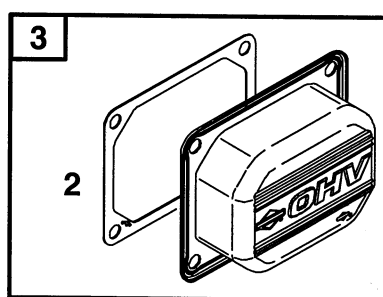
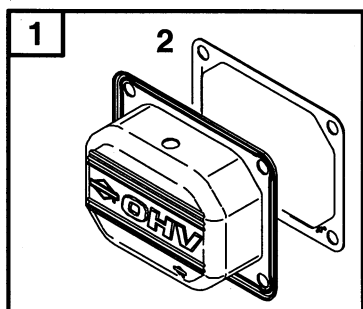


Utgåva Issue  2003- 11		Bildnr Picture No  1570		BRIGGS & STRATTON 31G777 STARTMOTOR (A) PACKNINGSSATS (B)		BRIGGS & STRATTON 31G777 STARTER MOTOR (A) GASKET SET (B)		Sida Page  228	
Pos. Fig.	Antal/Quantity				Art nr Part No	Benämning	Description	Sats Kit	Anmärkning Notes
	31G 777- 0120								
A01	1				693551	Startmotor kpl .....	Starter motor assy .....		
A02	1				693699	• Startdrev .....	• Starter drive .....		
A03	1				691265	•• Låsring .....	•• Retaining ring .....		
A04	1				693713	•• Drev .....	•• Pinion gear .....		
A05	1				692024	•• Koppling .....	•• Drive clutch .....		
A06	1				691283	• Lock .....	• Drive cap .....		
A07	1				692034	• Rotor .....	• Armature .....		
A08	1				693757	• Startmotorhus .....	• Starter housing .....		
A09	2				690323	• Bult .....	• Bolt .....		
A10	1				691029	• Mutter .....	• Nut .....		
A11	1				691261	• Bricka .....	• Washer .....		
A12	1				693167	•• Mutter .....	•• Nut .....		
A13	1				497608	•• Släpksats .....	•• Brush set .....		
A14	1				691293	• Borsthållare .....	• Brush retainer .....		
A15	1				691532	• Stag .....	• Strap .....		
A16	1				691286	• Botten .....	• End cap .....		
A17	1				690372	Skruv .....	Screw .....		
A18	1				691224	Kabelklämma .....	Wire clip .....		
A19	1				694123	Kabelklämma .....	Wire clip .....		
B01	1				391086	• Tätningsring .....	• Seal .....		
B02	1				692410	• Packning .....	• Gasket .....		
B03	1				697109	• Packning .....	• Gasket .....		
B04	1				697110	• Packning .....	• Gasket .....		
B05	1				690947	• Tätningsring .....	• Oil seal .....		
B06	1				692137	• Packning .....	• Gasket .....		
B07	1				691032	• Tätning .....	• Tube seal .....		
B08	1				692407	• Tätning .....	• Seal .....		
B09	1				691031	• O- ring .....	• O- ring .....		
B10	1				690968	• Ventiltätning .....	• Valve seal .....		
B11	1				272475	• Packning .....	• Gasket .....		
B12	1				697191	Packningssats .....	Gasket set .....		
B13	1				690190	Rep.sats- ventil .....	Overhaul kit- valve .....		
B14	1				692138	• O- ring .....	• O- ring .....		

A

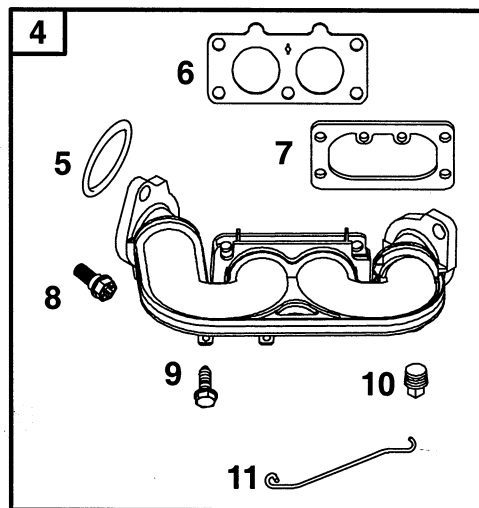
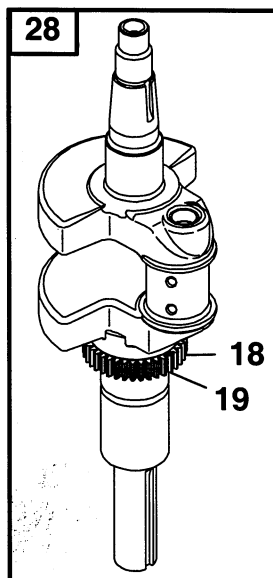
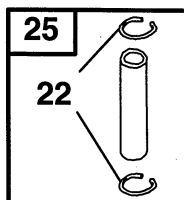
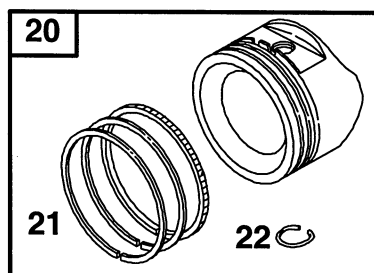
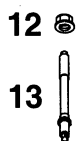
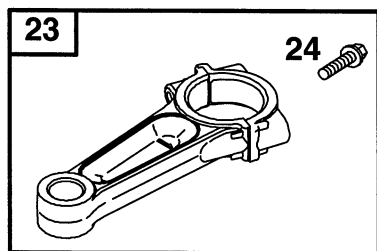


B

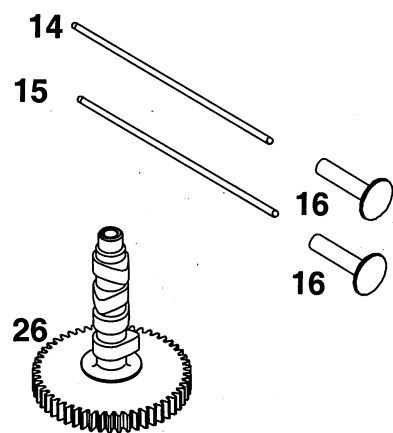


29

27

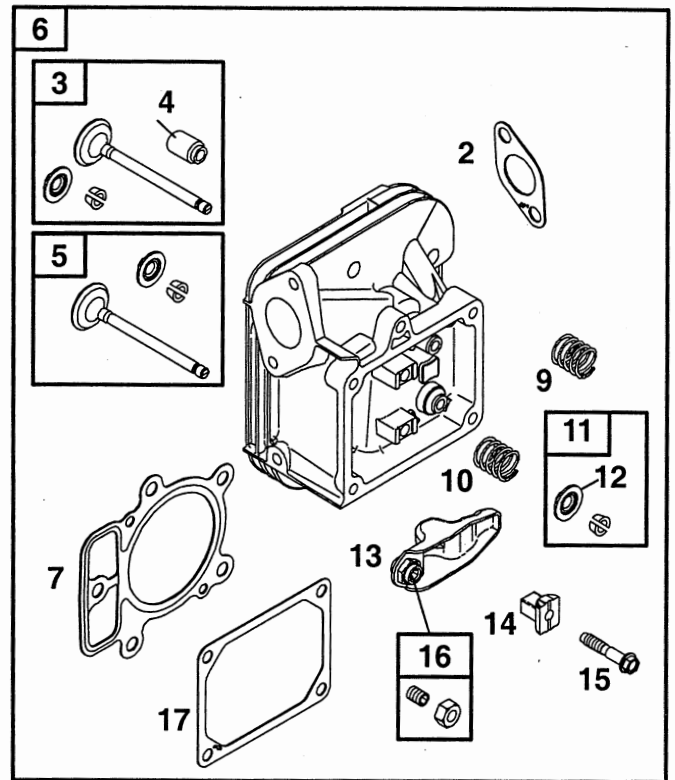
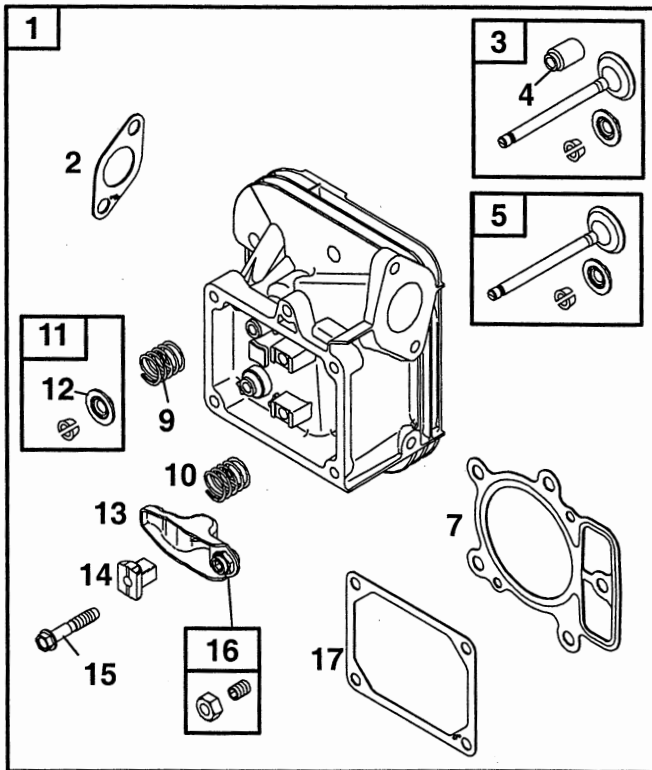


17

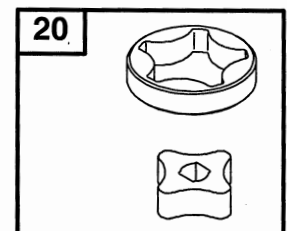
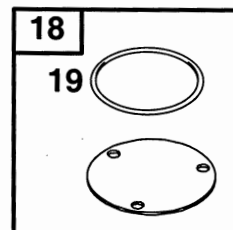
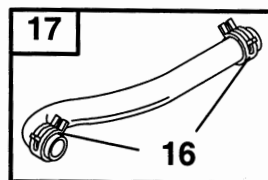
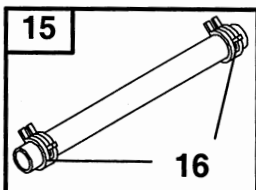
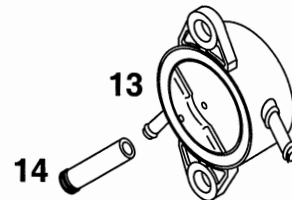
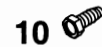
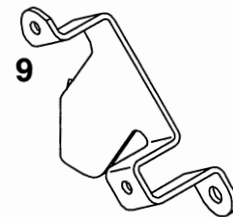
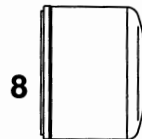
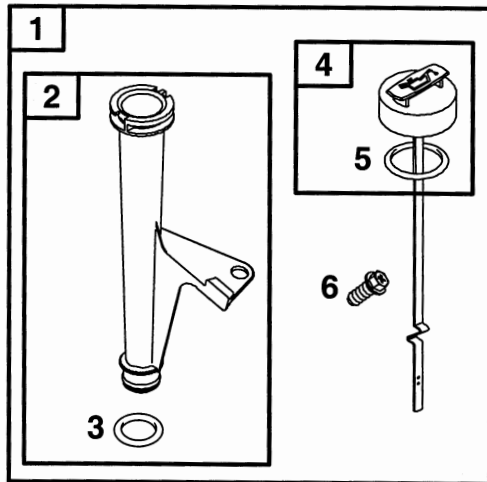


Utgåva Issue		Bildnr Picture No		BRIGGS & STRATTON 407777 CYLINDER (A) VEVAXEL (B)		BRIGGS & STRATTON 407777 CYLINDER (A) CRANKSHAFT (B)		Sida Page	
2003- 11		1462						230	
Pos. Fig.	Antal/Quantity				Art nr Part No	Benämning	Description	Sats Kit	Anmärkning Notes
	407 777- 0117								
A01	1				690231	Cylinder kpl.....	Cylinder assy.....		
A02	1				499585	• Bussning.....	• Bushing.....		
A03	1				391086	• Tätningsring .....	• Seal .....		
A04	2				690959	• Tapp.....	• Locating pin .....		
A05	3				690960	Skruv .....	Screw .....		
A06	1				499601	Ventil kpl.....	Breather assy .....		
A07	1				690942	• Rör .....	• Breather tube .....		
A08	1				690937	• Packning.....	• Gasket .....		
A09	1				690956	Oljesamlare.....	Oil collector .....		
A10	1				690957	Hållare .....	Breather retainer .....		
A11	1				690069	Vevhus kpl.....	Engine sump assy .....		
A12	1				690945	• Packning.....	• Gasket .....		
A13	1				690770	• Oljepumpnät .....	• Oil pump screen .....		
A14	1				690954	• Oljefilternippel.....	• Oil filter nipple.....		
A15	1				690946	• Avtappningsplugg.....	• Oil drain plug.....		
A16	1				690552	• Bussning.....	• Bushing.....		
A17	1				690283	• Oljvattappningsplugg .....	• Oil drain plug.....		
A18	1				690657	• Tätning .....	• Governor shaft seal .....		
A19	1				690947	• Tätningssring .....	• Oil seal .....		
A20	1				491657	Oljetrycksgivare.....	Oil pressure switch .....		
A21	10				694966	Skruv .....	Screw .....		
B01	1				499599	Ventilkåpa .....	Rocker arm cover.....		
B02	2				690971	• Packning.....	• Gasket .....		
B03	1				499600	Ventilkåpa .....	Rocker arm cover.....		
B04	1				695241	Insugningsrör .....	Intake manifold .....		
B05	2				691917	• O- ring.....	• O- ring .....		
B06	1				690950	• Packning.....	• Intake gasket.....		
B07	1				691001	• Packning.....	• Air cleaner gasket.....		
B08	4				695240	• Skruv .....	• Screw .....		
B09	2				695239	• Skruv .....	• Screw .....		
B10	1				690283	• Oljvattappningsplugg .....	• Oil drain plug.....		
B11	1				695238	• Spjällänk .....	• Throttle link.....		
B12	4				690958	Mutter .....	Nut .....		
B13	4				690951	Pinnbult .....	Stud .....		
B14	2				690981	Stötstång (stål).....	Push rod (steel) .....		
B15	2				690982	Stötstång (alum).....	Push rod (alum).....		
B16	4				690977	Ventillyftare .....	Valve tappet .....		
B17	1				222698	Kil .....	Key .....		
B18	1				690979	• Kil .....	• Timing key.....		
B19	1				690980	• Drev.....	• Timing gear .....		
B20	2				499588	Kolv kpl.....	Piston assy .....	Standard	
B20	2				499589	Kolv kpl.....	Piston assy .....	.010" oversize	
B20	2				499590	Kolv kpl.....	Piston assy .....	.020" oversize	
B20	2				499591	Kolv kpl.....	Piston assy .....	.030" oversize	
B21	2				499604	• Kolvringssats.....	• Ring set.....	Standard	
B21	2				499605	• Kolvringssats.....	• Ring set.....	.010" oversize	
B21	2				499606	• Kolvringssats.....	• Ring set.....	.020" oversize	
B21	2				499607	• Kolvringssats.....	• Ring set.....	.030" oversize	
B22	4				690975	• Låsring .....	• Lock ring .....		
B23	2				499583	Vevstake .....	Connecting rod .....		
B24	4				690976	• Skruv .....	• Screw .....		
B25	2				690229	Kolvbult .....	Piston pin.....		
B26	1				690978	Kamaxel.....	Camshaft.....		
B27	8				691127	Skruv .....	Screw.....		
B28	1				691046	Vevaxel .....	Crankshaft.....		
B29	1				691022	Chokelänk .....	Choke link .....		

A

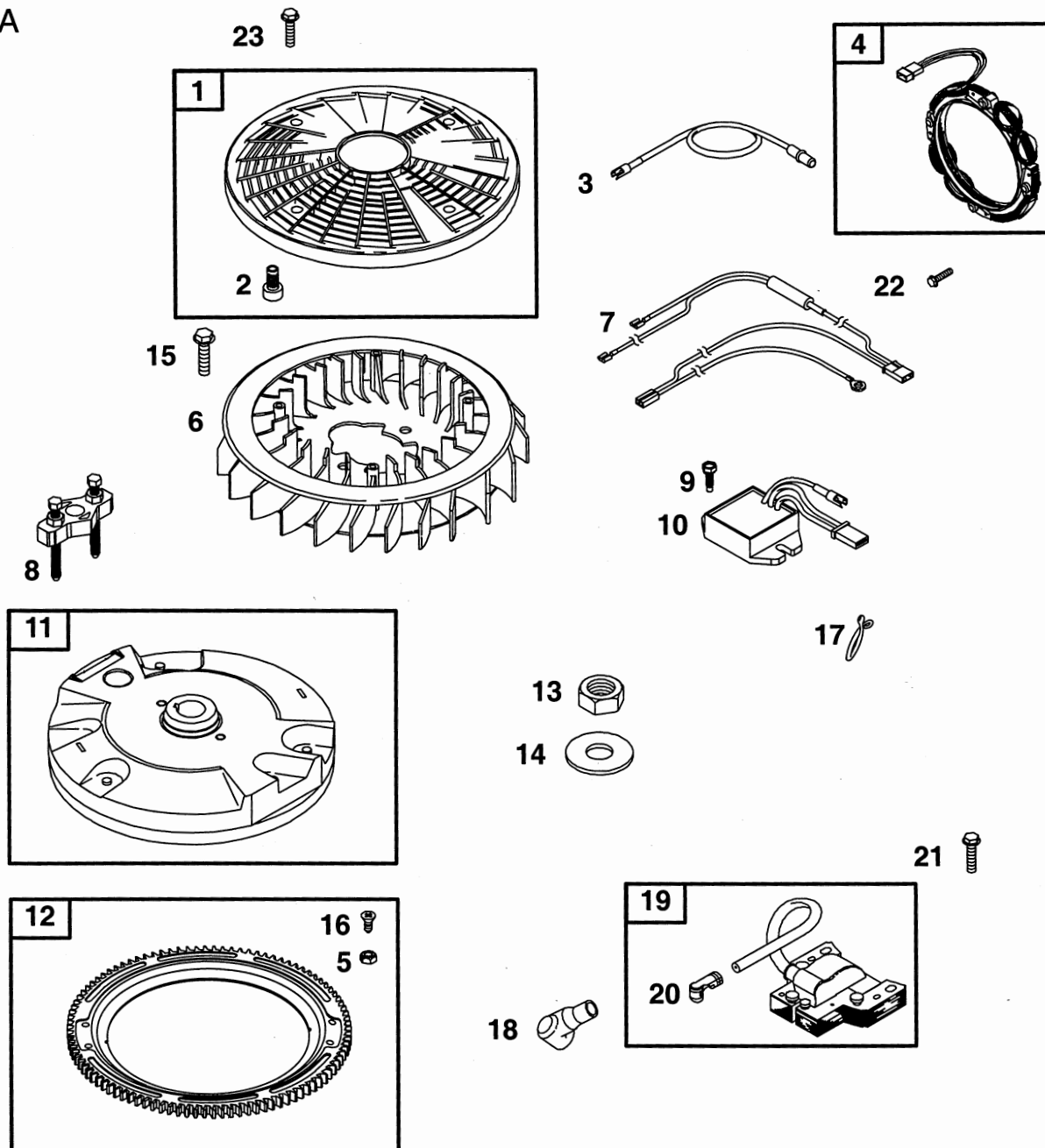


B

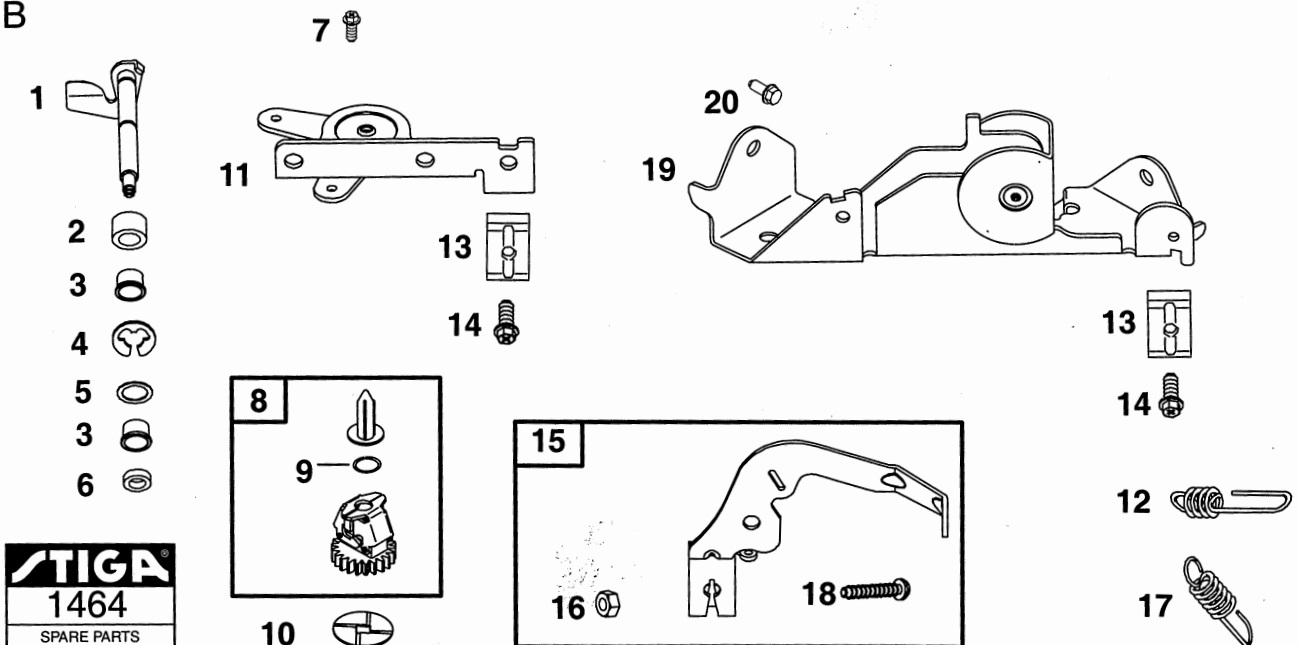


Utgåva Issue  2003- 11		Bildnr Picture No  1463		BRIGGS & STRATTON 407777 TOPPLOCK (A) BRÄNSLE, SMÖRJN. (B)		BRIGGS & STRATTON 407777 CYLINDER HEAD (A) FUEL, LUBRICATION (B)		Sida Page  232	
Pos. Fig.	Antal/Quantity				Art nr Part No	Benämning	Description	Sats Kit	Anmärkning Notes
	407 777- 0117								
A01	1				693998	Topplöck.....	Cylinder head .....		Cylinder #1
A02	2				690970	• Packning- utblås .....	• Gasket- exhaust.....		
A03	2				499597	• Insugningsventil .....	• Intake valve .....		Cylinder #2
A04	2				690968	• Ventilåttning .....	• Valve seal .....		
A05	2				499596	• Utblåsningsventil .....	• Exhaust valve .....		
A06	1				693999	Topplöck.....	Cylinder head .....		
A07	2				690962	• Topplöckspackning .....	• Cylinder head gasket .....		
A08	1				19374	Tändstiftsnyckel.....	Spark plug wrench .....		
A09	2				690963	• Ventilfjäder .....	• Valve spring .....		
A10	2				690963	• Ventilfjäder .....	• Valve spring .....		
A11	4				499586	• Ventilåållare .....	• Valve keeper .....		
A12	4				690964	• Ventilåållare .....	• Valve retainer .....		
A13	4				690972	• Vipparm .....	• Rocker arm .....		
A14	4				690973	• Vipparmsstyrning .....	• Rocker arm pivot.....		
A15	4				690967	• Skruv .....	• Screw .....		
A16	4				690083	• Ventiljustering.....	• Rocker arm adjuster .....		
A17	2				690971	• Packning .....	• Gasket .....		
A18	10				690360	Skruv .....	Screw .....		
A19	2				9400- 0244- 00	Tändstift .....	Spark plug.....		
B01	1				499602	Oljesticka kpl .....	Dipstick assy.....		
B02	1				691037	• Oljepåfyllningsrör .....	• Dipstick tube .....		
B03	1				691032	• Tätning .....	• Tube seal .....		
B04	1				691036	• Oljesticka .....	• Dipstick .....		
B05	1				691031	• O- ring.....	• O- ring .....		
B06	1				690960	• Skruv .....	• Screw .....		
B07	1				690954	Oljefilternippel .....	Oil filter nipple.....		
B08	1				492932	Oljefilter .....	Oil filter .....		
B09	1				691039	Håållare .....	Fuel pump bracket .....		
B10	2				690960	Skruv .....	Screw .....		
B11	1				691035	Bränslefilter .....	Fuel filter .....		
B12	2				690960	Skruv .....	Screw .....		
B13	1				808656	Bränslepump .....	Fuel pump .....		
B14	1				694000	Vakumslang .....	Vacuum hose .....		
B15	1				691050	Bränsleslang .....	Fuel line.....		
B16	4				95162	• Slangklämma.....	• Hose clamp .....		
B17	1				693180	Bränsleslang .....	Fuel line.....		
B18	1				499613	Oljepumplock.....	Oil pump cover.....		
B19	1				690589	• O- ringståttning .....	• O- ring seal.....		
B20	1				499054	Oljepump .....	Oil pump .....		
B21	3				691033	Skruv .....	Screw .....		
B22	1				691042	Pumpaxel.....	Pump shaft .....		

A

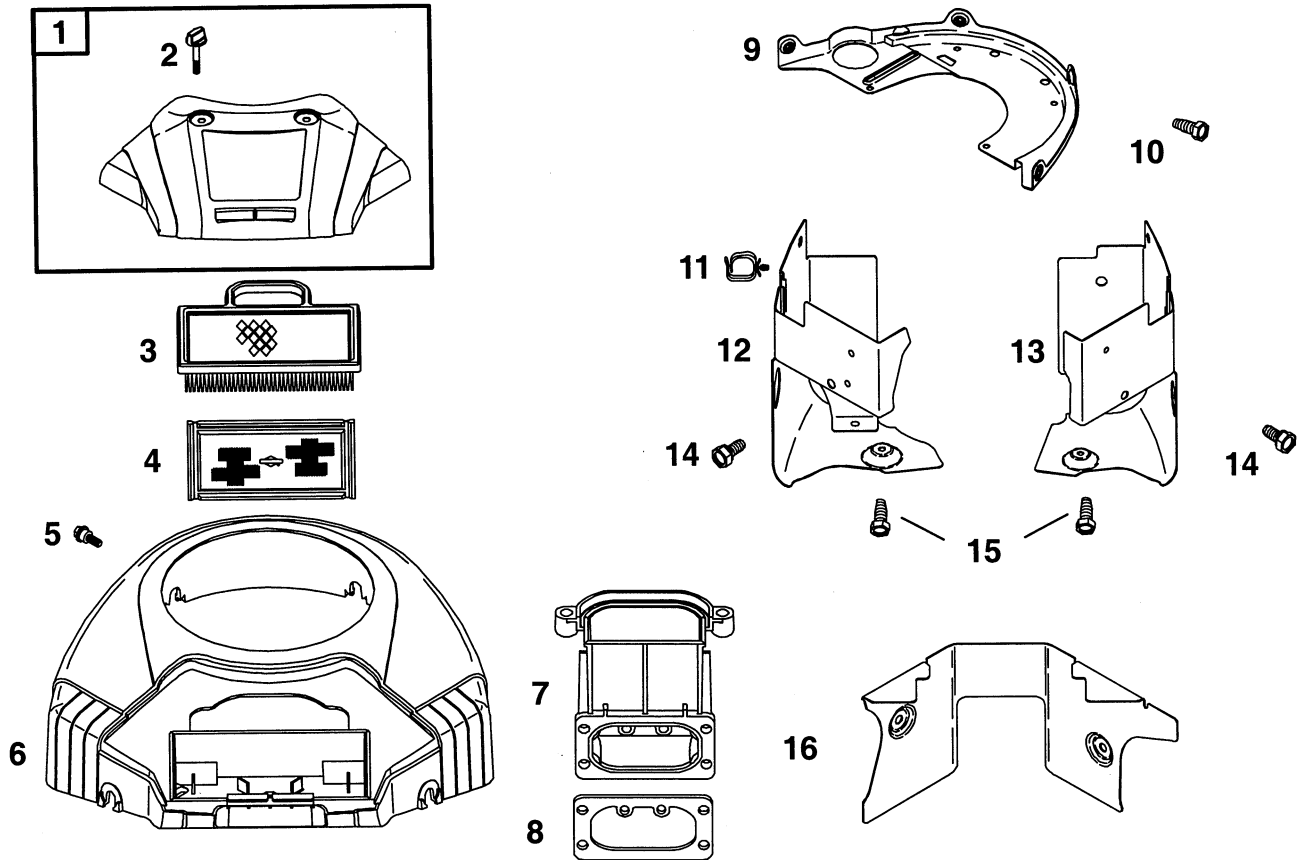


B

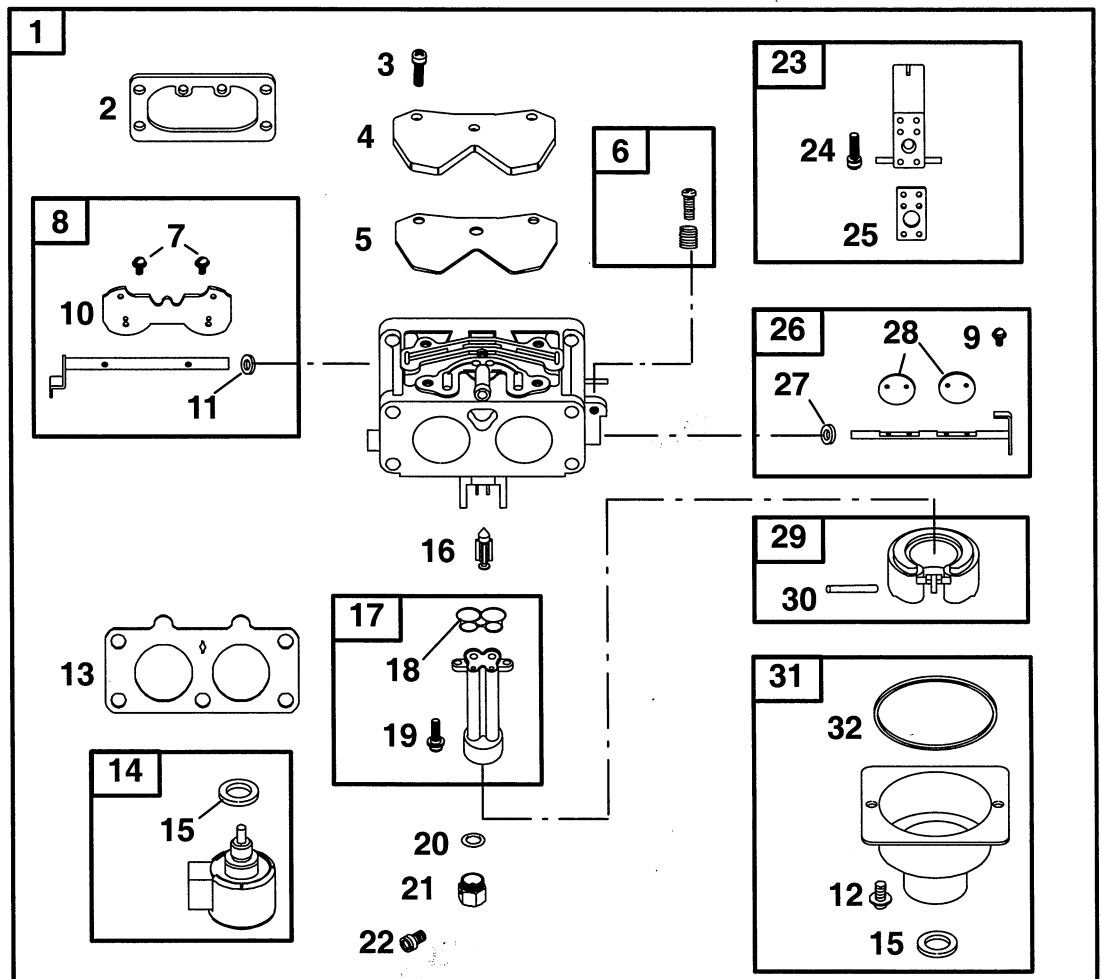


Utgåva Issue  2003- 11		Bildnr Picture No  1464		BRIGGS & STRATTON 407777 TÄNDNING (A) REGULATOR (B)		BRIGGS & STRATTON 407777 IGNITION (A) GOVERNOR (B)		Sida Page  234	
Pos. Fig.	Antal/Quantity				Art nr Part No	Benämning	Description	Sats Kit	Anmärkning Notes
	407 777- 0117								
A01	1				691055	Skyddsnät.....	Rotating screen.....		
A02	4				691215	• Distans .....	• Spacer .....		
A03	1				691208	Kabel .....	Wire .....		
A04	1				696458	Generator.....	Alternator .....		
A05	4				693148	• Mutter .....	• Nut .....		
A06	1				691243	Fläkt.....	Flywheel fan .....		
A07	1				691220	Kablage.....	Wiring harness.....		
A08	1				19203	Avdragare .....	Puller .....		
A09	2				690960	Skruv .....	Screw .....		
A10	1				691185	Regulator.....	Regulator .....		
A11	1				691053	Svånghjul.....	Flywheel .....		
A12	1				499612	Kuggkrans .....	Ring gear .....		
A13	1				691059	Mutter.....	Nut .....		
A14	1				691056	Bricka .....	Washer.....		
A15	4				691058	Skruv .....	Screw .....		
A16	4				693149	• Skruv .....	• Screw .....		
A17	1				694123	Kabelklämma .....	Wire clip.....		
A18	2				66538	Tändstiftsskydd .....	Spark plug elbow .....		
A19	1				691060	Tändsystem .....	Magneto armature.....		
A20	2				493880	• Anslutningshylsa .....	• Terminal .....		
A21	2				691061	Skruv .....	Screw .....		
A22	4				691183	Skruv .....	Screw .....		
A23	4				691057	Skruv .....	Screw .....		
B01	1				691045	Regulatorarm.....	Governor crank .....		
B02	1				690552	Bussning .....	Bushing.....		
B03	2				690553	Bussning .....	Bushing.....		
B04	1				690328	Hållare .....	E- ring retainer .....		
B05	1				690442	Bricka .....	Washer.....		
B06	1				690657	Tätning .....	Governor shaft seal .....		
B07	2				691003	Skruv .....	Screw .....		
B08	1				696376	Regulatordrev.....	Governor gear .....		
B09	1				690317	• Regulatoraxel.....	• Gov. retainer shaft.....		
B10	1				690412	Bricka .....	Washer.....		
B11	1				691021	Chokeregl.platta.....	Choke control brkt .....		
B12	1				691019	Fjäder.....	Governed idle spring .....		
B13	2				691024	Klämma .....	Clamp.....		
B14	2				691044	Skruv .....	Screw.....		
B15	1				691048	Regulatorarm.....	Gov. control lever .....		
B16	1				691029	• Mutter.....	• Nut .....		
B17	1				692909	Fjäder.....	Governor spring.....		
B18	1				690311	• Bult .....	• Bolt .....		
B19	1				691023	Reglageplåt.....	Control bracket .....		
B20	2				690960	Skruv .....	Screw.....		

A

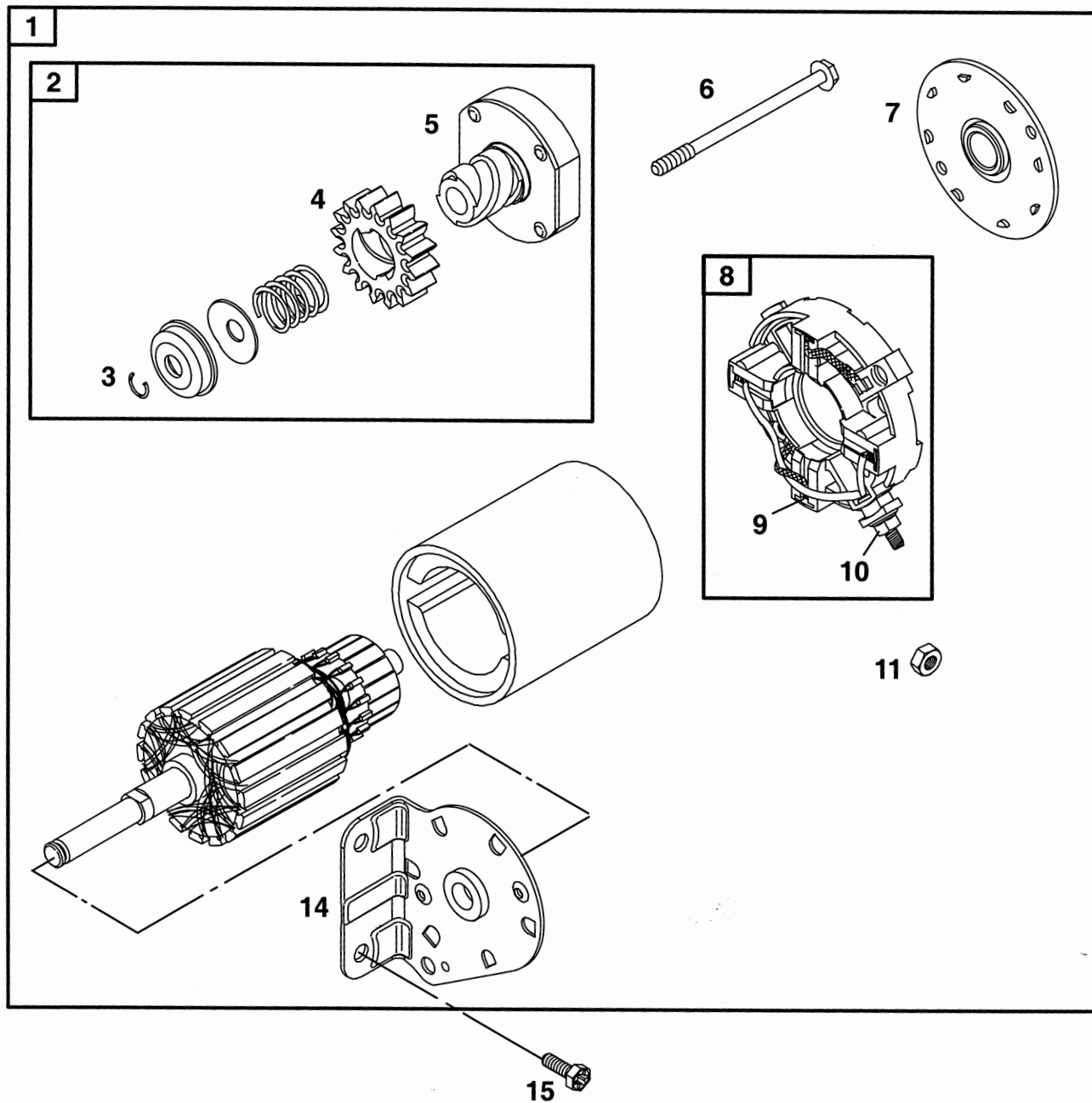


B

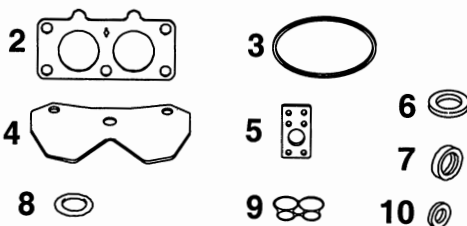
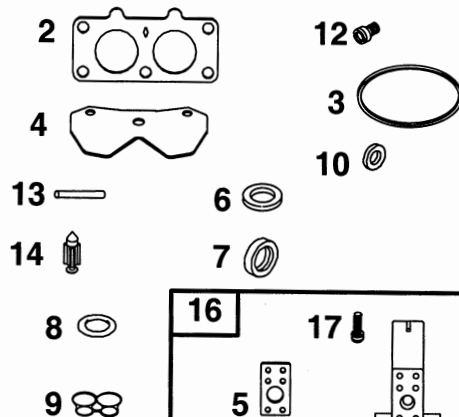
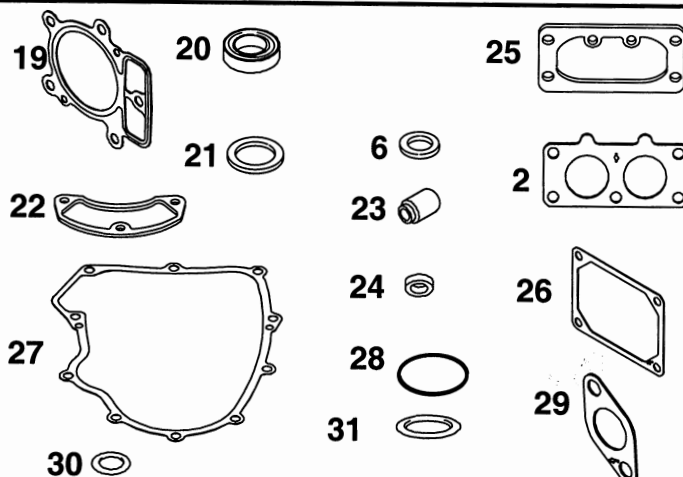
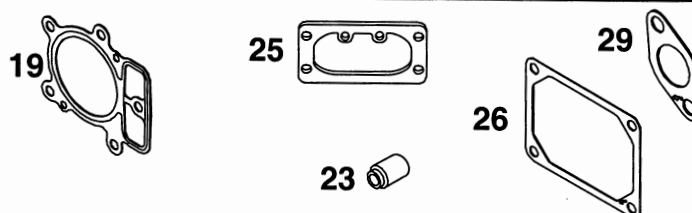


Utgåva Issue 2003- 11		Bildnr Picture No 1465		BRIGGS & STRATTON 407777 LUFTFILTER (A) FÖRGASARE (B)		BRIGGS & STRATTON 407777 AIR CLEANER (A) CARBURETTOR (B)		Sida Page 236	
Pos. Fig.	Antal/Quantity				Art nr Part No	Benämning	Description	Sats Kit	Anmärkning Notes
	407 777- 0117								
A01	1				499788	Luftrenarlock .....	Air cleaner cover .....		Cylinder #1 Cylinder #2
A02	2				691008	• Låsraff .....	• Air cleaner knob .....		
A03	1				499486	Filterpatron .....	Cartridge filter .....		
A04	1				273638	Förfilter .....	Pre- cleaner filter .....		
A05	2				691005	Skruv .....	Screw .....		
A06	1				691004	Fläkthus .....	Blower housing .....		
A07	1				691011	Luftkanal .....	Air adapter .....		
A08	1				691001	Packning .....	Air cleaner gasket .....		
A09	1				691009	Platta .....	Back plate .....		
A10	4				697820	Skruv .....	Screw .....		
A11	1				691010	Clips .....	Clip .....		
A12	1				691012	Luftplåt .....	Air guide cover .....		
A13	1				691014	Luftplåt .....	Air guide cover .....		
A14	2				691003	Skruv .....	Screw .....		
A15	2				690960	Skruv .....	Screw .....		
A16	1				691015	Luftplåt .....	Air guide cover .....		
B01	1				499804	Förgasare kpl .....	Carburettor assy .....		
B02	1				691001	• Packning .....	• Air cleaner gasket .....		
B03	3				690990	• Skruv .....	• Screw .....		
B04	1				690999	• Täckplåt .....	• Cover plate .....		
B05	1				690234	• Packning .....	• Gasket .....		
B06	1				499802	• Tomgångsjustering .....	• Idle speed kit .....		
B07	2				690718	• Skruv .....	• Screw .....		
B08	1				499807	• Chokeaxelsats .....	• Choke shaft kit .....		
B09	4				690718	• Skruv .....	• Screw .....		
B10	1				690986	• Chokespjäll .....	• Choke valve .....		
B11	1				690998	• Tätning .....	• Shaft seal .....		
B12	2				690992	• Skruv .....	• Screw .....		
B13	1				690950	• Packning .....	• Intake gasket .....		
B14	1				499809	• Bränslesolenoid .....	• Fuel solenoid .....		
B15	2				690997	• Tätningsbricka .....	• Sealing washer .....		
B16	1				690985	• Nålventil .....	• Float needle valve .....		
B17	1				499803	• Bränslerör .....	• Fuel transfer tube .....		
B18	1				690988	• O- ringstätning .....	• O- ring seal .....		
B19	2				690991	• Skruv .....	• Screw .....		
B20	1				690987	• O- ringstätning .....	• O- ring seal .....		
B21	1				690996	• Hållare .....	• Solenoid retainer .....		
B22	1				690232	• Huvudmunstycke .....	• Main jet .....		
B23	1				499808	• Munstycke .....	• Carburettor nozzle .....		
B24	1				690990	• Skruv .....	• Screw .....		
B25	1				690995	• Packning .....	• Gasket .....		
B26	1				499805	• Spjällaxelsats .....	• Throttle shaft kit .....		
B27	1				691000	• Tätning .....	• Throttle shaft seal .....		
B28	2				690993	• Gasspjäll .....	• Throttle valve .....		
B29	1				499806	• Flottör .....	• Carburettor float .....		
B30	1				690984	• Flottöraxel .....	• Float hinge pin .....		
B31	1				499810	• Flottörhus .....	• Float bowl .....		
B32	1				690994	• Packning .....	• Gasket .....		
B33	1				690989	Huvudmunstycke .....	Main jet .....	Hög höjd/high altitud	

A

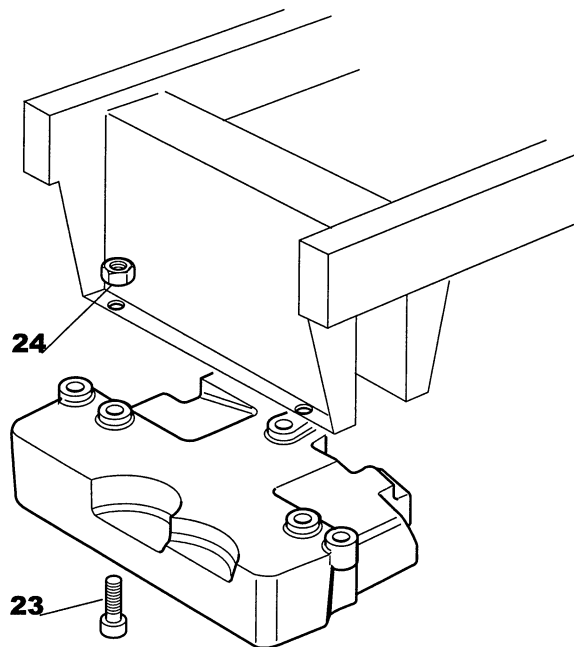


Utgåva Issue 2003- 11		Bildnr Picture No 1466		BRIGGS & STRATTON 407777 STARTMOTOR (A)		BRIGGS & STRATTON 407777 STARTER MOTOR (A)		Sida Page 238	
Pos. Fig.	Antal/Quantity				Art nr Part No	Benämning	Description	Sats Kit	Anmärkning Notes
	407 777- 0117								
A01	1				691262	Startmotor kpl .....	Starter motor assy .....		
A02	1				497606	• Startdrev .....	• Drive .....		
A03	1				691265	•• Låsring .....	•• Retaining ring .....		
A04	1				693058	•• Drev .....	•• Pinion gear .....		
A05	1				692024	•• Koppling .....	•• Drive clutch .....		
A06	2				691263	• Bult .....	• Bolt .....		
A07	1				691286	• Botten .....	• End cap .....		
A08	1				691293	• Borsthållare .....	• Brush retainer .....		
A09	4				497608	•• Släpkolssats .....	•• Brush set .....		
A10	1				693167	•• Mutter .....	•• Nut .....		
A11	1				691029	• Mutter .....	• Nut .....		
A14	1				691283	• Lock .....	• Drive cap .....		
A15	2				690372	Skruv .....	Screw .....		

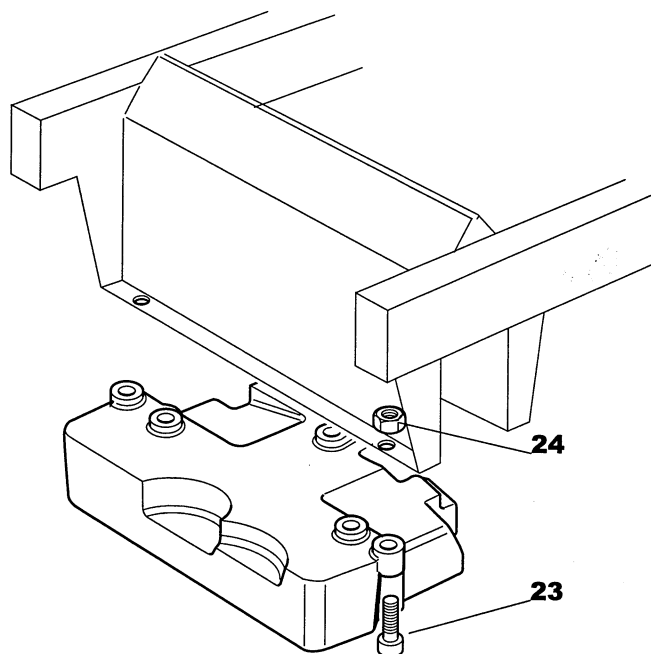
**1 CARBURETOR GASKET SET****11 CARBURETOR OVERHAUL KIT****18 ENGINE GASKET SET****15 VALVE OVERHAUL KIT**

Utgåva Issue  2003- 11		Bildnr Picture No  1467		BRIGGS & STRATTON 407777 PACKNINGSSATS (A)		BRIGGS & STRATTON 407777 GASKET SET (A)		Sida Page  240	
Pos. Fig.	Antal/Quantity				Art nr Part No	Benämning	Description	Sats Kit	Anmärkning Notes
	407 777- 0117								
A01	1				499812	Packningssats .....	Carb.gasket set .....		
A02	1				690950	• Packning .....	• Intake gasket .....		
A03	1				690994	• Packning .....	• Gasket .....		
A04	1				690234	• Packning .....	• Gasket .....		
A05	1				690995	• Packning .....	• Gasket .....		
A06	1				690997	• Tätningsbricka .....	• Sealing washer .....		
A07	1				691000	• Tätning .....	• Throttle shaft seal .....		
A08	1				690987	• O- ringstätning .....	• O- ring seal .....		
A09	1				690988	• O- ringstätning .....	• O- ring seal .....		
A10	1				690998	• Tätning .....	• Shaft seal .....		
A11	1				499811	Förgasarp.sats .....	Carb.overhaul kit .....		
A12	1				690232	• Huvudmunstycke .....	• Main jet .....		
A13	1				690984	• Flottöraxel .....	• Float hinge pin .....		
A14	1				690985	• Nålventil .....	• Float needle valve .....		
A15	1				694013	Ventilrep.sats .....	Valve overhaul kit .....		
A16	1				499808	• Munstycke .....	• Carburettor nozzle .....		
A17	1				690990	• • Skruv .....	• • Screw .....		
A18	1				694012	Packningssats- motor .....	Gasket set- engine .....		
A19	1				690962	• Topplöckspackning .....	• Cylinder head gasket .....		
A20	1				690947	• Tätningsring .....	• Oil seal .....		
A21	1				391086	• Tätningsring .....	• Seal .....		
A22	1				690937	• Packning .....	• Gasket .....		
A23	1				690968	• Ventiltätning .....	• Valve seal .....		
A24	1				690657	• Tätning .....	• Governor shaft seal .....		
A25	1				691001	• Packning .....	• Air cleaner gasket .....		
A26	1				690971	• Packning .....	• Gasket .....		
A27	1				690945	• Packning .....	• Gasket .....		
A28	1				690589	• O- ringstätning .....	• O- ring seal .....		
A29	1				690970	• Packning- utblås .....	• Gasket- exhaust .....		
A30	1				691032	• Tätning .....	• Tube seal .....		
A31	1				691031	• O- ring .....	• O- ring .....		

# Estate Master

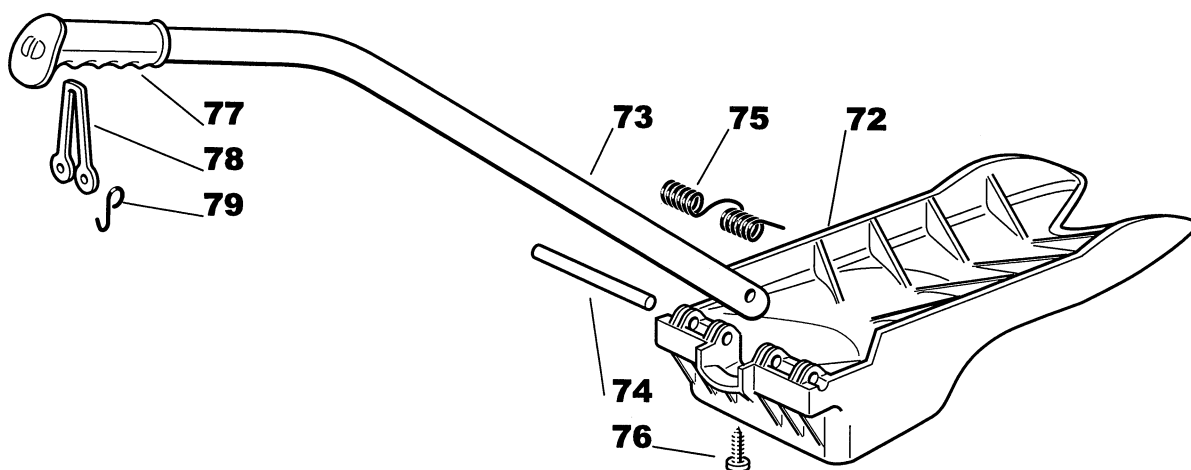


# Estate Senator - President - Royal - Pro 20



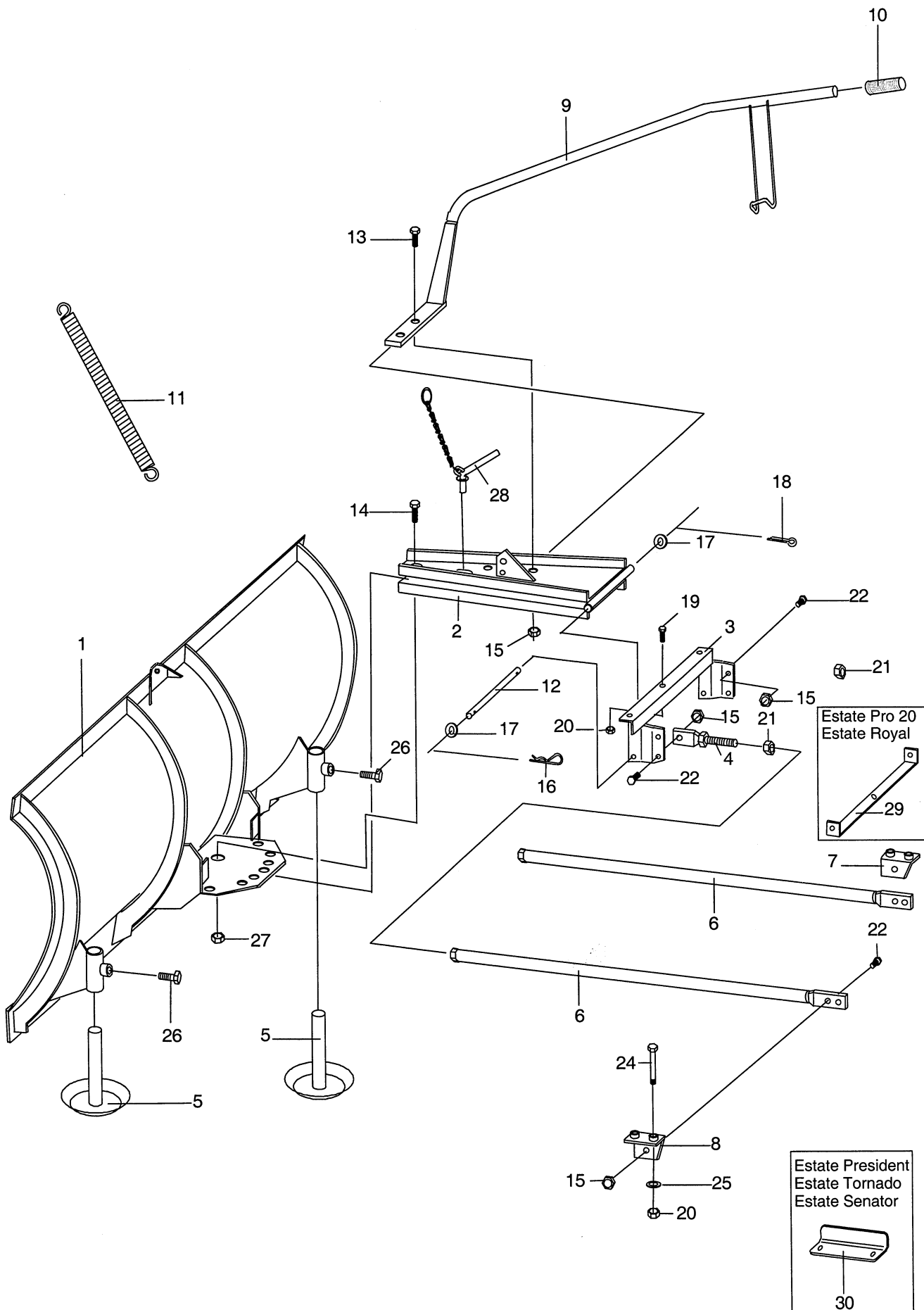


Utgåva Issue 2003- 11		Bildnr Picture No 1253A		FRONTVIKT ART.NR 13- 0912- 11		FRONT WEIGHT ART.NO 13- 0912- 11		Sida Page 142	
Pos. Fig.	Antal/Quantity				Art nr Part No	Benämning	Description	Sats Kit	Anmärkning Notes
	0912								
23	3				9939- 0850- 12	Skruv .....	Screw .....		
24	3				9747- 0831- 02	Mutter.....	Lock nut.....		

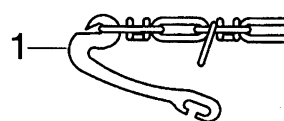
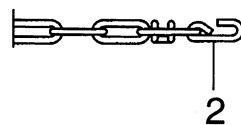
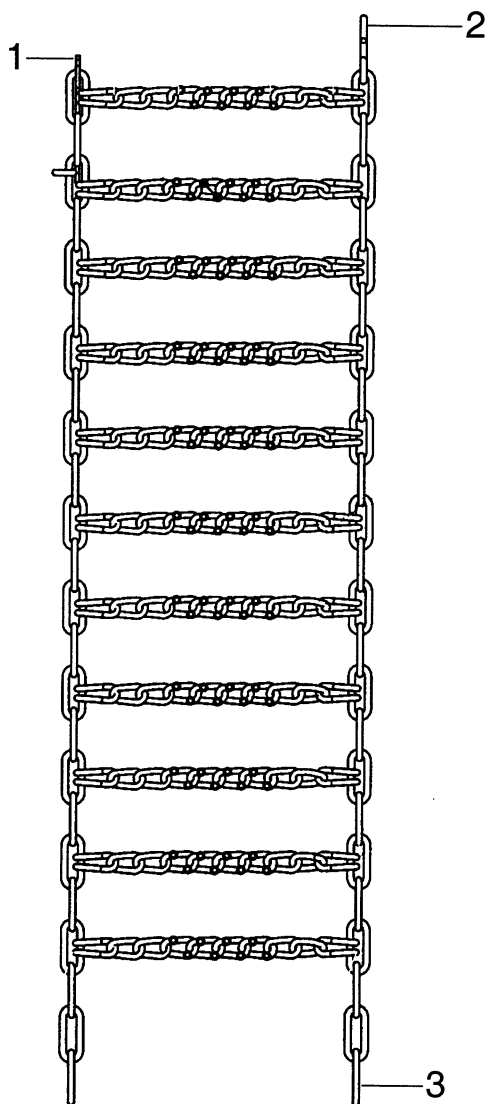




Utgåva Issue 2003- 11		Bildnr Picture No 1452		MULCHINGSATS ART.NR 13- 0927- 11 ART.NR 13- 0932- 11		MULCHING KIT ART.NO 13- 0927- 11 ART.NO 13- 0932- 11		Sida Page 156	
Pos. Fig.	Antal/Quantity				Art nr Part No	Benämning	Description	Sats Kit	Anmärkning Notes
	0927	0932							
72	1				1136- 0874- 01	Deflektor.....	Deflector .....		
72		1			1136- 0875- 01	Deflektor.....	Deflector .....		
73	1	1			1136- 0887- 01	Handtagsrör.....	Handle tube.....		
74	1	1			1136- 0903- 01	Sprint.....	Pin .....		
75	1	1			1136- 0893- 01	Fjäder.....	Spring .....		
76	1	1			9836- 9525- 12	Skruv.....	Screw.....		
77	1	1			1136- 0882- 01	Handtag .....	Handgrip .....		
78	1	1			1136- 0927- 01	Elastiskt band .....	Elastic tie.....		
79	2	2			1136- 0877- 01	Krok.....	Hook .....		

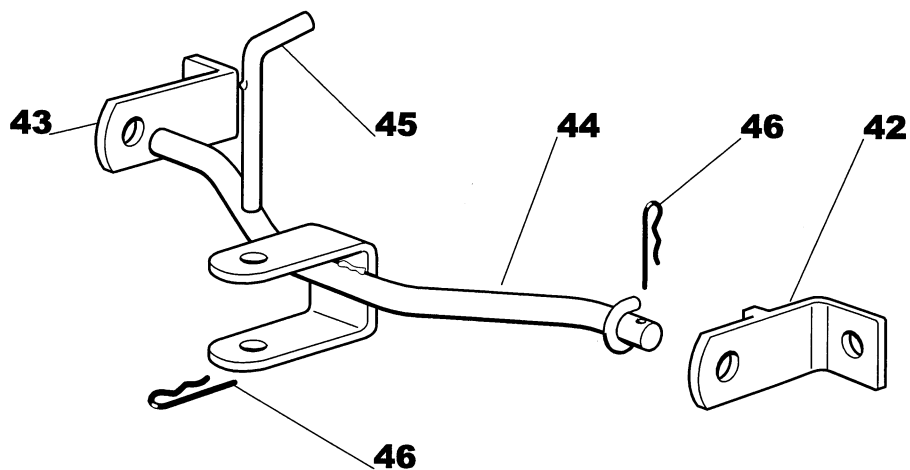


Utgåva Issue  2003-11		Bildnr Picture No  1453		SNÖBLAD (120 cm) ART.NR 13-0924- 11		SNOW BLADE (120 cm) ART.NO 13-0924- 11		Sida Page  162	
Pos. Fig.	Antal/Quantity				Art nr Part No	Benämning	Description	Sats Kit	Anmärkning Notes
	0924								
1	1				1319- 1528- 01	Blad .....	Blade .....		
2	1				1319- 1812- 01	Bladfäste.....	Blade holder .....		
3	1				1319- 1816- 01	Ram .....	Frame .....		
4	2				1319- 1817- 01	Skruv .....	Screw .....		
5	2				1319- 1526- 01	Släpsko.....	Skid .....		
6	2				1319- 1818- 01	Stag .....	Rod .....		
7	1				1319- 1819- 01	Stagfäste .....	Rod bracket.....		
8	1				1319- 1820- 01	Stagfäste .....	Rod bracket.....		
9	1				1319- 1815- 01	Lyftarm .....	Lift rod .....		
10	1				1319- 1822- 01	Handtag .....	Grip .....		
11	1				1319- 1527- 01	Fjäder.....	Spring .....		
12	1				1319- 1821- 01	Axel .....	Shaft .....		
13	2				9997- 1030- 16	Skruv .....	Screw .....		
14	1				1319- 1551- 01	Skruv .....	Screw .....		
15	8				9747- 1031- 02	Låsmutter .....	Lock nut .....		
16	1				1319- 1692- 01	Låsnål .....	Spring pin .....		
17	2				9699- 0037- 02	Bricka .....	Washer .....		
18	1				1319- 1811- 01	Saxpinne.....	Cotter pin .....		
19	3				9997- 0816- 16	Skruv .....	Screw .....		
20	7				9747- 0831- 02	Mutter.....	Lock nut .....		
21	2				9747- 1031- 02	Låsmutter .....	Lock nut .....		
22	6				9997- 1025- 16	Skruv .....	Screw .....		
24	4				9997- 0880- 16	Skruv .....	Screw .....		
25	4				9699- 0028- 02	Planbricka.....	Flat washer .....		
26	2				9997- 1220- 16	Skruv .....	Screw .....		
27	1				9747- 1631- 02	Låsmutter .....	Lock nut.....		
28	1				1319- 1531- 01	Sprint.....	Pin .....		
29	1				1319- 1813- 01	Monteringsfäste.....	Mounting plate.....		
30	1				1319- 1814- 01	Monteringsfäste.....	Mounting plate.....		

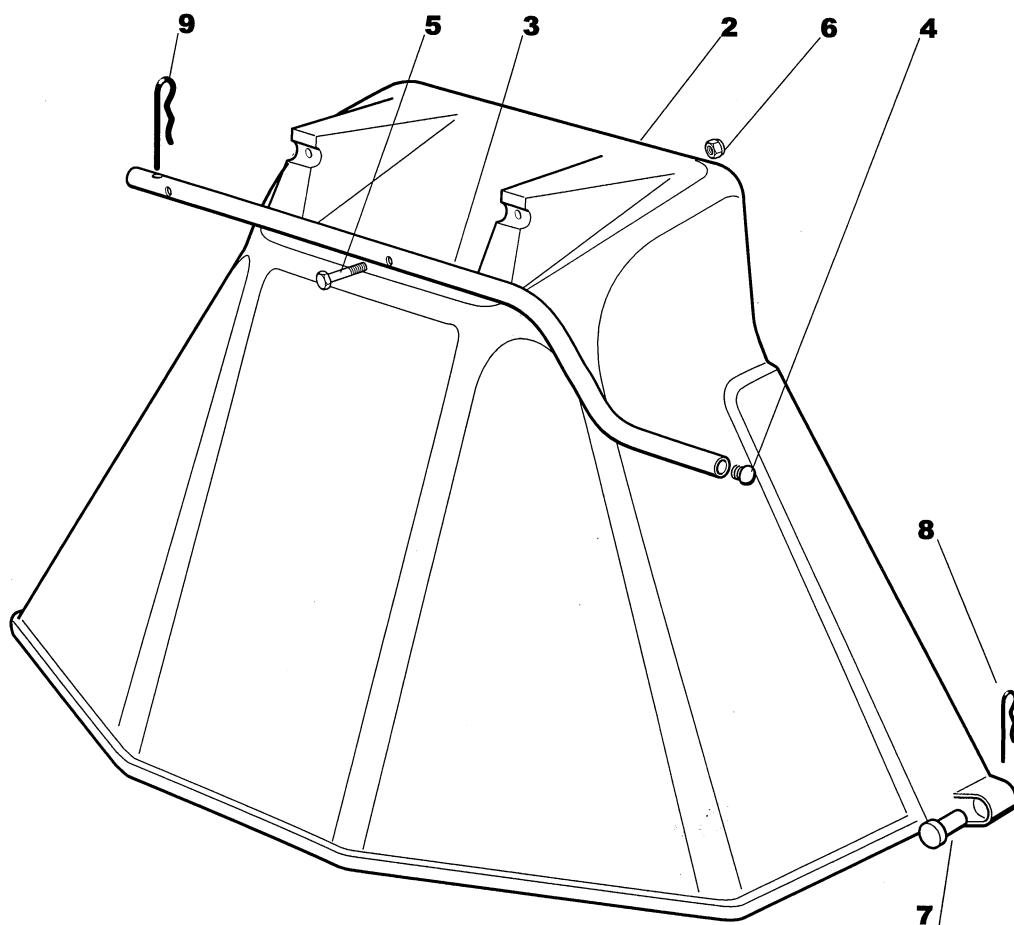




Utgåva Issue 2003- 11		Bildnr Picture No 1454		SNÖKEDJOR ART.NR 13- 0925- 11				SNOW CHAINS ART.NO 13- 0925- 11		Sida Page 164	
Pos. Fig.	Antal/Quantity				Art nr Part No	Benämning	Description	Sats Kit	Anmärkning Notes		
	0925										
1	2				1134- 5064- 01	Låsbygel .....	Lock .....		Ø5,5 x 40		
2	2				1134- 5065- 01	Krok.....	Hook .....				
3	ERF				1134- 4416- 04	Länk.....	Link .....				



Utgåva Issue 2003- 11		Bildnr Picture No 1252		DRAG ART.NR 13- 0913- 11			TOW BAR ART.NO 13- 0913- 11		Sida Page 160	
Pos. Fig.	Antal/Quantity				Art nr Part No	Benämning	Description	Sats Kit	Anmärkning Notes	
	0913									
42	1				1136- 0527- 01	Vinkelfäste- hö .....	Bracket- RH .....			
43	1				1136- 0323- 01	Vinkelfäste- vä .....	Bracket- LH .....			
44	1				1136- 0464- 01	Dragstång .....	Tow rod .....			
45	1				1136- 0228- 01	Dragsprint .....	Tow pin .....			
46	2				1136- 0096- 01	Låsnål .....	Hair pin .....			



Utgåva Issue  2003- 11		Bildnr Picture No  1250		DEFLEKTOR ART.NR 13- 0911- 11		DEFLECTOR ART.NO 13- 0911- 11		Sida Page  148	
Pos. Fig.	Antal/Quantity				Art nr Part No	Benämning	Description	Sats Kit	Anmärkning Notes
	0911								
2	1				1136- 0505- 01	Utkastskydd.....	Ejection guard .....		
3	1				1136- 0357- 01	Stödrör .....	Support .....		
4	2				1136- 0061- 01	Plugg .....	Cap.....		
5	2				9997- 0645- 12	Skruv .....	Screw .....		
6	2				9747- 0631- 02	Låsmutter .....	Lock nut.....		
7	2				1136- 0229- 01	Sprint.....	Pin .....		
8	2				9598- 0002- 02	Låsnål .....	Pin lock .....		
9	1				1136- 0096- 01	Låsnål .....	Hair pin .....		