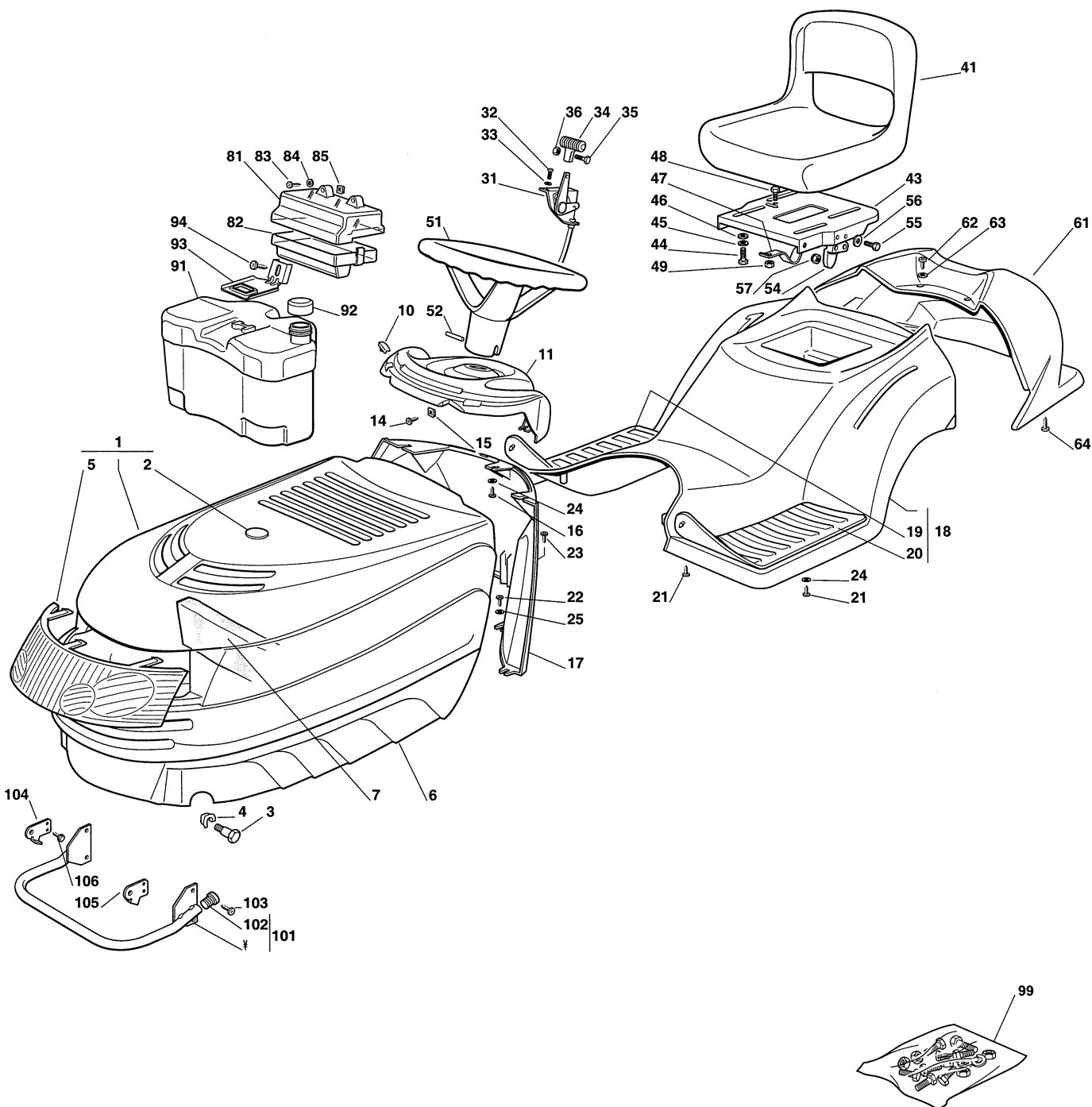
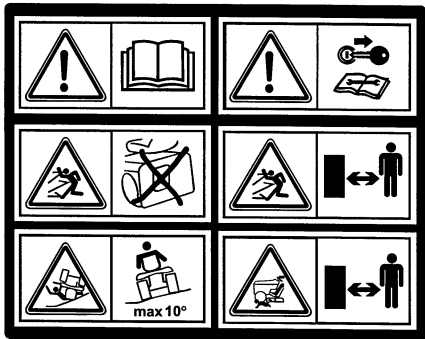
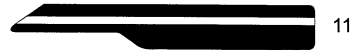
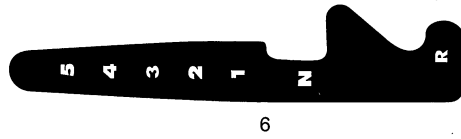


Genuine Spare Parts

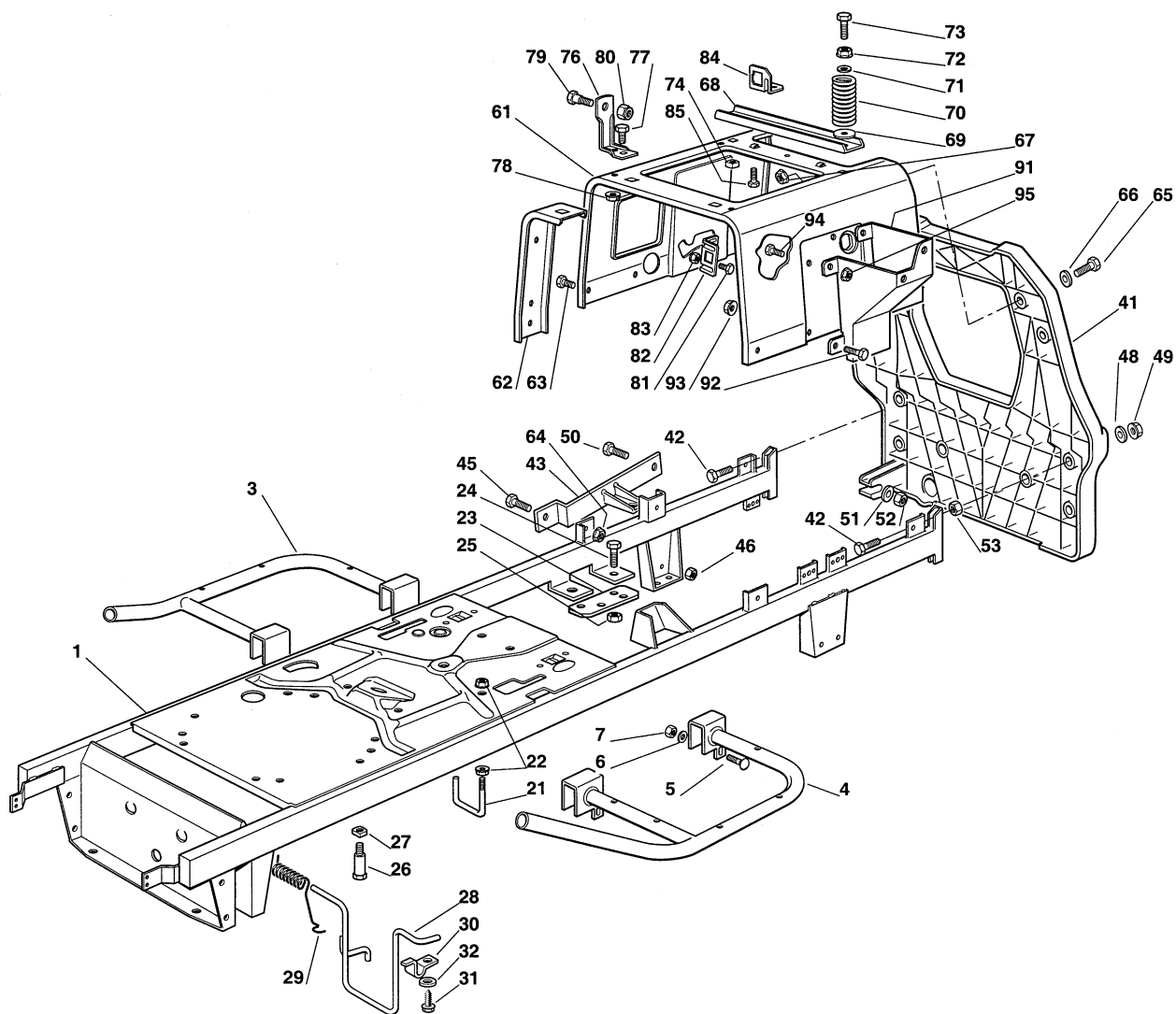




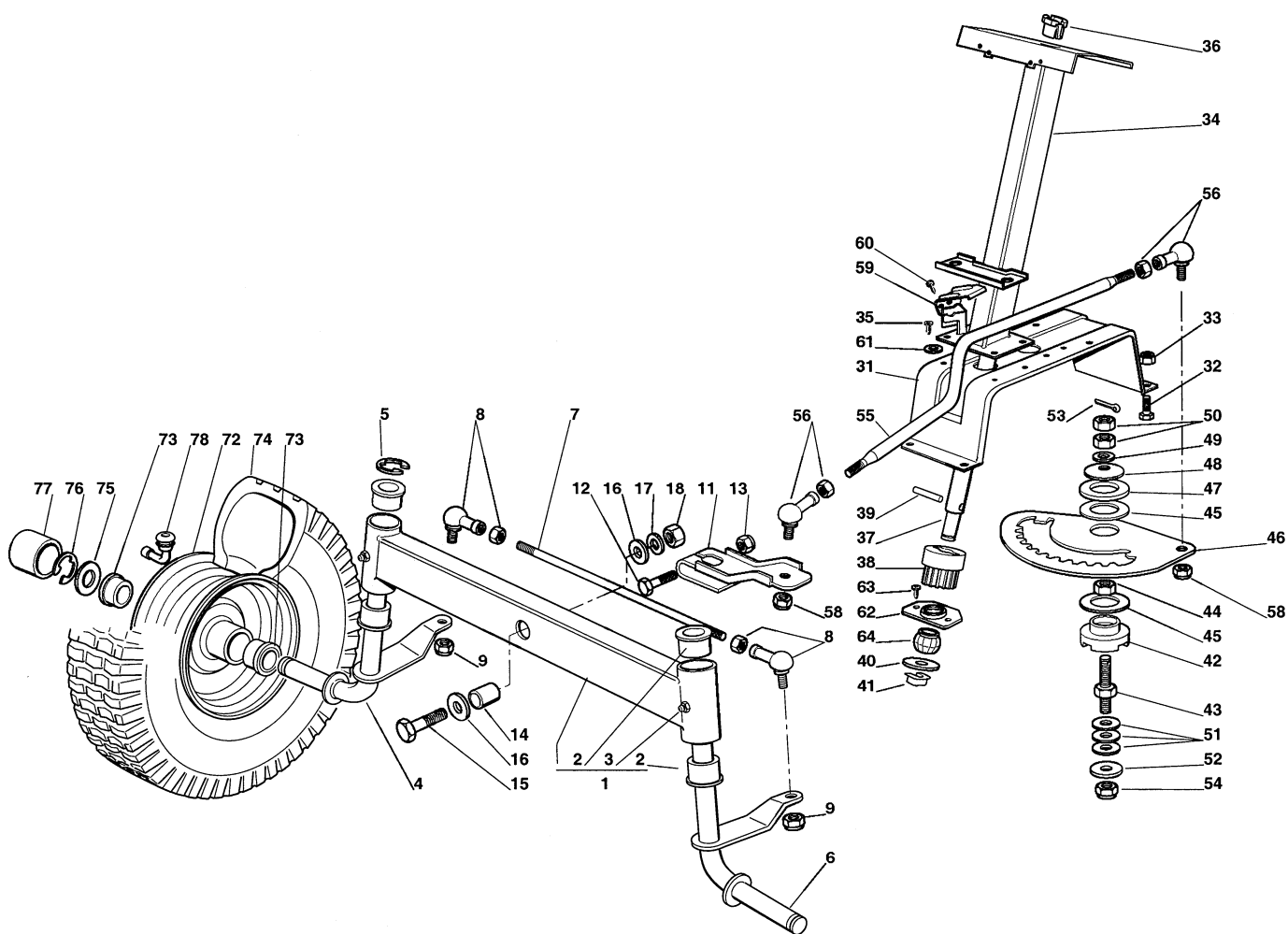
Utgåva Issue 2004- 13		Bildnr Picture No 1561A		ESTATE TORNADO ESTATE TORNADO HST KAROSS		ESTATE TORNADO ESTATE TORNADO HST BODY WORK		Sida Page 94	
Pos. Fig.	Antal/Quantity				Art nr Part No	Benämning	Description	Sats Kit	Anmärkning Notes
	2521	2522							
1	1	1			1136-1038-01	Motorhuv.....	Engine hood.....		Inkl. pos 2, 5
2	1	1			1136-0905-01	• Platta.....	• Plate.....		
3	2	2			1136-0230-01	Bult.....	Bolt.....		Inkl. pos 19, 20 Inkl. pos 19, 20
4	2	2			1136-0009-01	Låsplatta.....	Lock plate.....		
5	1	1			1136-0888-01	• Grill.....	• Grill.....		
6	1	1			1136-0866-01	Motorhuv- nedre.....	Engine hood- lower.....		
7	1	1			1136-0923-01	Avskiljare.....	Intake separator.....		
10	2	2			1136-0179-01	Huvskydd.....	Grommet.....		
11	1	1			1136-0871-01	Instrumentbräda.....	Dashboard.....		
14	2	2			9848-8013-16	Skruv.....	Screw.....		
15	2	2			1136-0010-01	Låsplatta.....	Lock plate.....		
16	3	3			9836-9618-12	Skruv.....	Screw.....		
17	1	1			1136-0926-01	Stöd.....	Support.....		
18	1				1136-0475-01	Hjulkåpa.....	Wheel cover.....		
18		1			1136-0476-01	Hjulkåpa.....	Wheel cover.....		
19	1	1			1136-0148-01	• Fotstegsskydd- hö.....	• Footboard cover- RH.....		
20	1	1			1136-0147-01	• Fotstegsskydd- vä.....	• Footboard cover- LH.....		
21	6	6			9836-9635-12	Skruv.....	Screw.....		
22	4	4			9836-9618-12	Skruv.....	Screw.....		
23	1	1			9836-9525-12	Skruv.....	Screw.....		
24	5	5			9699-0060-02	Planbricka.....	Flat washer.....		
25	4	4			9699-0085-02	Planbricka.....	Flat washer.....		
31	1	1			1136-0440-01	Gasreglage.....	Throttle control.....		Inkl. pos 44 - 46, 52 Inkl. pos 102
32	2	2			9997-0412-16	Skruv.....	Screw.....		
33	2	2			9683-0010-02	Bricka.....	Washer.....		
34	1	1			1136-0192-01	Knopp.....	Handle.....		
35	1	1			9865-0412-16	Skruv.....	Screw.....		
36	1	1			9799-0431-02	Mutter.....	Nut.....		
41	1	1			1136-0315-01	Sits.....	Seat.....		
43	1	1			1136-0252-01	Sitsplatta.....	Seat plate.....		
44	4	4			9997-0820-16	• Skruv.....	• Screw.....		
45	4	4			9683-0030-02	• Låsbricka.....	• Lock washer.....		
46	4	4			9699-0056-02	• Planbricka.....	• Flat washer.....		
47	1	1			1136-0891-01	Fjäder.....	Spring.....		
48	1	1			9997-0512-16	Skruv.....	Screw.....		
49	1	1			9747-0531-02	Mutter.....	Nut.....		
51	1	1			1136-0360-01	Ratt.....	Steering wheel.....		
52	1	1			9595-0272-00	• Stift.....	• Pin.....		
54	1	1			1136-0942-01	Kam.....	Cam.....		
55	2	2			1136-0820-01	Skruv.....	Screw.....		
56	2	2			9699-0018-02	Bricka.....	Washer.....		
57	2	2			9747-0531-02	Mutter.....	Nut.....		
61	1	1			1136-0869-01	Kåpa.....	Cover.....		Inkl. pos 44 - 46, 52 Inkl. pos 102
62	2	2			9836-9635-12	Skruv.....	Screw.....		
63	2	2			9699-0035-02	Planbricka.....	Flat washer.....		
64	2	2			9836-9618-12	Skruv.....	Screw.....		
81	1	1			1136-0275-01	Skydd- övre.....	Guard- upper.....		
82	1	1			1136-0276-01	Skydd- nedre.....	Guard- lower.....		
83	2	2			9847-8038-16	Skruv.....	Screw.....		
84	2	2			9699-0024-02	Planbricka.....	Flat washer.....		
85	2	2			1136-0010-01	Låsplatta.....	Lock plate.....		
91	1	1			1136-0318-01	Bränsletank.....	Fuel tank.....		
92	1	1			1136-0344-01	Tanklock.....	Tank cap.....		Inkl. pos 44 - 46, 52 Inkl. pos 102
93	1	1			1136-0327-01	Tankfäste.....	Tank support.....		
94	1	1			9848-8013-16	Skruv.....	Screw.....		
99	1	1			1136-1108-01	Tillbehörspåse.....	Key outfit.....		
101	1	1			1136-0553-01	Ljuddämparskydd.....	Muffler protection.....		
102	2	2			1136-0061-01	• Plugg.....	• Cap.....		
103	4	4			9847-8216-16	Skruv.....	Screw.....		Inkl. pos 44 - 46, 52 Inkl. pos 102
104	1	1			1136-0259-01	Huvfäste- hö.....	Hood plate- RH.....		
105	1	1			1136-0260-01	Huvfäste- vä.....	Hood plate- LH.....		
106	4	4			9847-8009-16	Skruv.....	Screw.....		



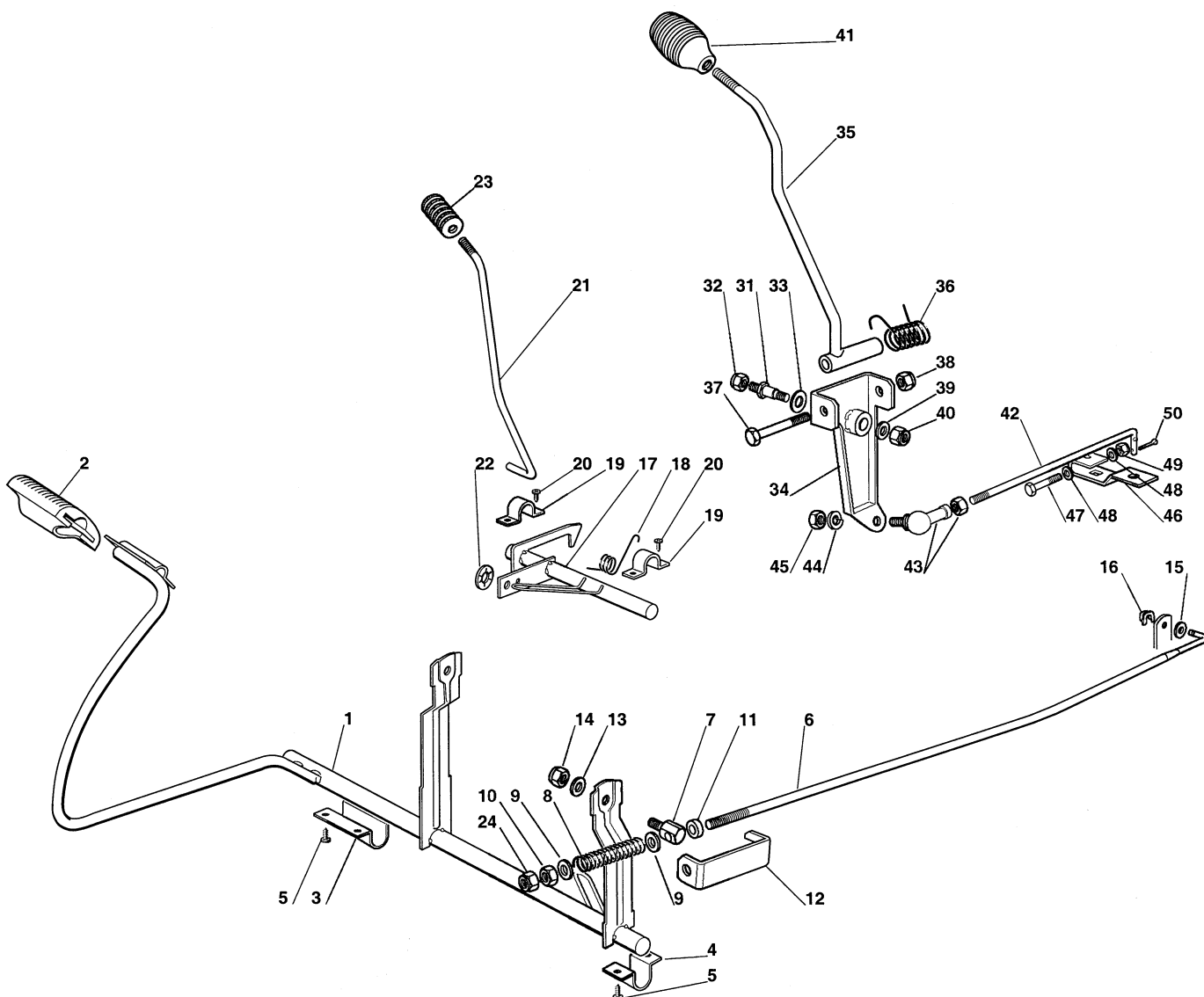
Utgåva Issue 2004- 13		Bildnr Picture No 1562		ESTATE TORNADO ESTATE TORNADO HST DEKALER		ESTATE TORNADO ESTATE TORNADO HST LABELS		Sida Page 96	
Pos. Fig.	Antal/Quantity				Art nr Part No	Benämning	Description	Sats Kit	Anmärkning Notes
	2521	2522							
1	1	1			1136-0832-01	Dekal	Label		Ej ill/not ill. Ø 55 mm 140 x 33 mm
2	1	1			1136-0026-01	Dekal	Label		
3	1	1			1136-0020-01	Dekal	Label		
5	1	1			1136-0031-01	Dekal	Label		
6	1				1136-0027-01	Dekal	Label		
7	1	1			1136-0028-01	Dekal	Label		
8	1	1			1136-0029-01	Dekal	Label		
9	1	1			1136-0021-01	Dekal	Label		
11	1	1			1136-1217-01	Dekal	Label		
99	2	2			1136-1447-01	Dekal "Tornado"	Label "Tornado"		
99	1	1			1136-1451-01	Dekal "STIGA"	Label "STIGA"		
99	3	3			1136-1453-01	Dekal "STIGA"	Label "STIGA"		



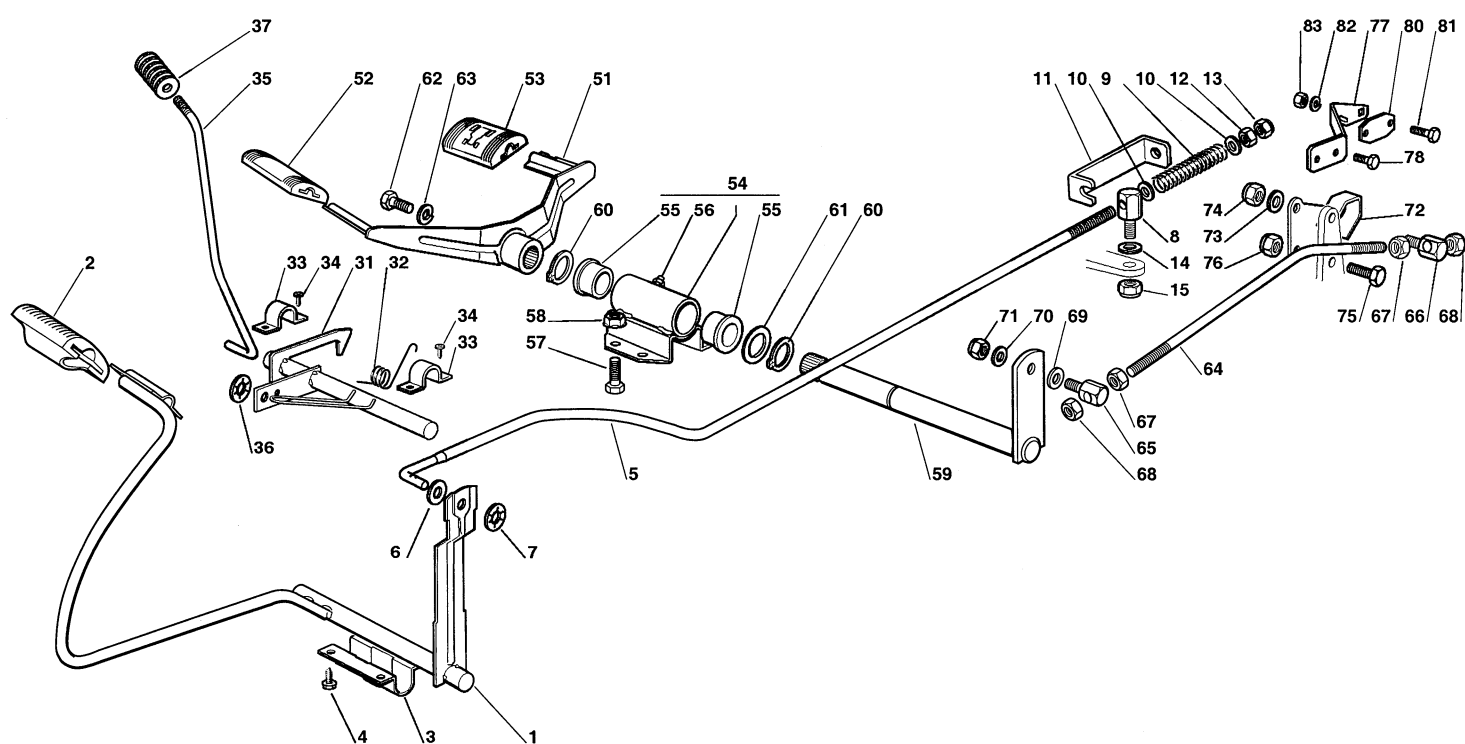
Utgåva Issue 2004- 13		Bildnr Picture No 1563A		ESTATE TORNADO ESTATE TORNADO HST CHASSI		ESTATE TORNADO ESTATE TORNADO HST CHASSIS		Sida Page 98	
Pos. Fig.	Antal/Quantity				Art nr Part No	Benämning	Description	Sats Kit	Anmärkning Notes
	2521	2522							
1	1	1			1136- 1499- 01	Ram.....	Frame.....		
3	1	1			1136- 0548- 01	Fotstegsstöd- hö.....	Footboard support- RH.....		
4	1	1			1136- 0549- 01	Fotstegsstöd- vå.....	Footboard support- LH.....		
5	4	4			9898- 0645- 12	Skruv.....	Screw.....		
6	4	4			9699- 0060- 02	Planbricka.....	Flat washer.....		
7	4	4			9747- 0631- 02	Låsmutter.....	Lock nut.....		
21		1			1136- 0267- 01	Remstyrning.....	Belt guide.....		
22		2			9739- 0631- 22	Mutter.....	Nut.....		
23		2			1136- 0261- 01	Platta.....	Plate.....		
24		2			9997- 0820- 16	Skruv.....	Screw.....		
25		2			9747- 0831- 02	Mutter.....	Lock nut.....		
26	2				1136- 0907- 01	Remstyrning.....	Belt guide.....		
27	2				1136- 0004- 01	Fyrkantmutter.....	Square nut.....		
28	1	1			1136- 0881- 01	Remstyrning.....	Belt guide.....		
29	1	1			1136- 0896- 01	Fjäder.....	Spring.....		
30	2	2			1136- 1247- 01	Platta.....	Plate.....		
31	2	2			9847- 8216- 16	Skruv.....	Screw.....		
32	2	2			9699- 0035- 02	Planbricka.....	Flat washer.....		
41	1	1			1136- 0906- 01	Plåt- bak.....	Plate- rear.....		
42	2	2			9997- 0825- 16	Skruv.....	Screw.....		
43	1	1			1136- 1051- 01	Förstärkning.....	Reinforcement.....		
45	1	1			9997- 0816- 16	Skruv.....	Screw.....		
46	1	1			9739- 0831- 22	Mutter.....	Nut.....		
48	2	2			9699- 0056- 02	Planbricka.....	Flat washer.....		
49	2	2			9747- 0831- 02	Mutter.....	Lock nut.....		
50	1	1			9997- 0840- 16	Skruv.....	Screw.....		
51	1	1			9699- 0090- 02	Planbricka.....	Flat washer.....		
52	1	1			9747- 0831- 02	Mutter.....	Lock nut.....		
53	2	2			9739- 0831- 22	Mutter.....	Nut.....		
61	1	1			1136- 0337- 01	Sitsfäste.....	Seat support.....		
62	2	2			1136- 0301- 01	Förstärkningsstag.....	Reinforcement plate.....		
63	4	4			9997- 0614- 16	Skruv.....	Screw.....		
64	4	4			9739- 0631- 22	Mutter.....	Nut.....		
65	4	4			9997- 0620- 16	Skruv.....	Screw.....		
66	4	4			9699- 0060- 02	Planbricka.....	Flat washer.....		
67	4	4			9747- 0631- 02	Låsmutter.....	Lock nut.....		
68	1	1			1136- 0302- 01	Förstärkningsstag.....	Reinforcement plate.....		
69	2	2			9699- 0056- 02	Planbricka.....	Flat washer.....		
70	2	2			1136- 0202- 01	Fjäder.....	Spring.....		
71	2	2			9699- 0090- 02	Planbricka.....	Flat washer.....		
72	2	2			9739- 0831- 22	Mutter.....	Nut.....		
73	2	2			1136- 0358- 01	Skruv.....	Screw.....		
74	2	2			1136- 0003- 01	Fyrkantmutter.....	Square nut.....		
76	2	2			1136- 0321- 01	Vinkelfäste.....	Bracket.....		
77	2	2			9997- 0816- 16	Skruv.....	Screw.....		
78	2	2			9739- 0831- 22	Mutter.....	Nut.....		
79	2	2			1136- 0086- 01	Bult.....	Bolt.....		
80	2	2			9712- 0831- 02	Låsmutter.....	Lock nut.....		
81	2	2			9997- 0512- 16	Skruv.....	Screw.....		
82	1	1			1136- 0322- 01	Vinkelfäste.....	Bracket.....		
83	2	2			9747- 0531- 02	Mutter.....	Nut.....		
84	1	1			1136- 0925- 01	Vinkelfäste.....	Angle bracket.....		
85	2	2			9847- 8009- 16	Skruv.....	Screw.....		
91	1	1			1136- 0333- 01	Stöd.....	Support.....		
92	2	2			9997- 0614- 16	Skruv.....	Screw.....		
93	2	2			9739- 0631- 22	Mutter.....	Nut.....		
94	2	2			9997- 0614- 16	Skruv.....	Screw.....		
95	2	2			9739- 0631- 22	Mutter.....	Nut.....		



Utgåva Issue 2004- 13		Bildnr Picture No 1213B		ESTATE TORNADO ESTATE TORNADO HST STYRNING		ESTATE TORNADO ESTATE TORNADO HST STEERING		Sida Page 100	
Pos. Fig.	Antal/Quantity				Art nr Part No	Benämning	Description	Sats Kit	Anmärkning Notes
	2521	2522							
1	1	1			1136-0466-01	Framaxel kpl	Front wheel axle assy		Inkl. pos 2, 3
2	4	4			1136-0121-01	• Bussning	• Bushing		
3	2	2			9501-0500-00	• Smörjnippel	• Grease joint		
4	1	1			1136-0485-01	Hjulspindel- hö	Stub axle- RH		
5	1	1			9652-0015-04	Låsring	Retaining ring		
6	1	1			1136-0486-01	Hjulspindel- vå	Stub axle- LH		
7	1	1			1136-0349-01	Parallellstag	Tie rod		
8	2	2			1136-0092-01	Kulled	Ball joint		
9	2	2			9747-1031-02	Låsmutter	Lock nut		
11	1	1			1136-0188-01	Styrarm	Steering arm		
12	1	1			9997-1055-12	Skruv	Screw		
13	1	1			9747-1031-02	Låsmutter	Lock nut		
14	1	1			1136-0165-01	Distans	Spacer		
15	1	1			9997-1260-02	Skruv	Screw		
16	2	2			1136-0016-01	Bricka	Washer		
17	1	1			9683-0055-02	Låsbricka	Lock washer		
18	1	1			9799-1231-02	Mutter	Nut		
31	1	1			1136-0335-01	Stöd	Support		
32	4	4			9997-0816-16	Skruv	Screw		
33	4	4			9747-0831-02	Mutter	Lock nut		
34	1	1			1136-1496-01	Fäste	Support		
35	4	4			9847-8216-16	Skruv	Screw		
36	1	1			1136-1469-01	Bussning	Bushing		
37	1	1			1136-1471-01	Rattstång	Steering column		
38	1	1			1136-0263-01	Styrdrev	Steering pinion		
39	1	1			9595-0262-00	Spännstift	Locating pin		
40	1	1			9699-0037-02	Bricka	Washer		
41	1	1			1136-0008-01	Låsplatta	Lock plate		
42	1	1			1136-0128-01	Bussning	Bushing		
43	1	1			1136-0246-01	Pinnbult	Stud bolt		
44	1	1			9799-1031-02	Mutter	Nut		
45	2	2			1136-0310-01	Bricka	Washer		
46	1	1			1136-0320-01	Styrsektor	Steering sector		
47	1	1			1136-0311-01	Bricka	Washer		
48	1	1			1136-0083-01	Fjäderbricka	Elastic washer		
49	1	1			9699-0035-02	Planbricka	Flat washer		
50	2	2			9799-1031-02	Mutter	Nut		
51	3	3			1136-0087-01	Bricka	Washer		
52	1	1			1136-0015-01	Bricka	Washer		
53	1	1			9599-0070-02	Saxsprint	Split pin		
54	1	1			9747-1031-02	Låsmutter	Lock nut		
55	1	1			1136-0111-01	Styrstag	Steering rod		
56	2	2			1136-0092-01	Kulled	Ball joint		
58	2	2			9747-1031-02	Låsmutter	Lock nut		
59		1			1136-0279-01	Brytarskydd	Micro protection		
60		2			9847-7813-16	Skruv	Screw		
61	2	2			9699-0035-02	Planbricka	Flat washer		
62	1	1			1136-1477-01	Stöd	Support		
63	2	2			9847-8116-16	Skruv	Screw		
64	1	1			1136-1473-01	Länk	Joint		
72	2	2			1136-0454-01	Fälg	Rim		
73	4	4			1136-0157-01	Lager	Bearing		
74	2	2			1136-0269-01	Däck (Turf Saver)	Tire (Turf Saver)		
74	2	2			1136-0271-01	Däck (Deli)	Tire (Deli)		
75	2	2			1136-0305-01	Bricka	Washer		
76	2	2			9652-0015-04	Låsring	Retaining ring		
77	2	2			1136-0081-01	Navkapsel	Hub cap		
78	2	2			1136-0359-01	Ventil	Valve		

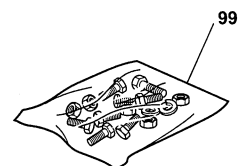
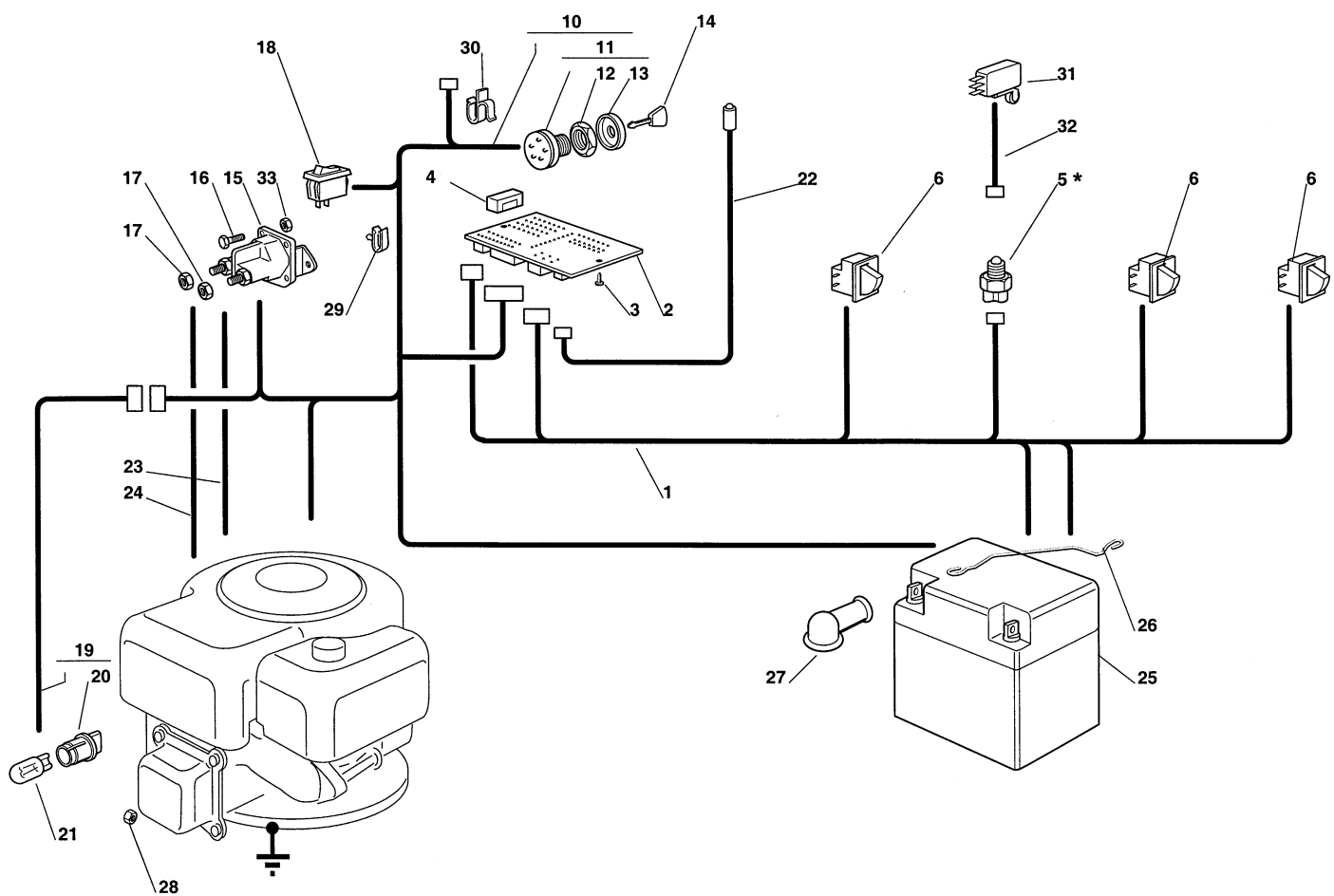


Utgåva Issue 2004- 13		Bildnr Picture No 1214A		ESTATE TORNADO BROMSREGLAGE VÄXELREGLAGE		ESTATE TORNADO BRAKE CONTROL GEAR SHIFTER CONTROL		Sida Page 102	
Pos. Fig.	Antal/Quantity				Art nr Part No	Benämning	Description	Sats Kit	Anmärkning Notes
	2521								
1	1				1136-0506-01	Bromspedal	Brake pedal		
2	1				1136-0152-01	Pedalskydd	Pedal cover		
3	1				1136-0254-01	Bygel	Clamp.....		
4	1				1136-0255-01	Bygel	Clamp.....		
5	6				9847-8016-16	Skruv	Screw		
6	1				1136-0116-01	Bromsstång	Brake rod		
7	1				1136-0244-01	Ledbult	Pivot bolt.....		
8	1				1136-0218-01	Fjäder.....	Spring		
9	2				9699-0035-02	Planbricka.....	Flat washer		
10	1				9799-1031-02	Mutter.....	Nut		
11	1				1136-0172-01	Distans	Spacer		
12	1				1136-0329-01	Bygel	Clamp.....		
13	1				9699-0060-02	Planbricka.....	Flat washer		
14	1				9747-0631-02	Låsmutter	Lock nut.....		
15	1				9699-0090-02	Planbricka.....	Flat washer		
16	1				1136-0009-01	Låsplatta	Lock plate		
17	1				1136-0441-01	Spärraxel	Axle		
18	1				1136-0217-01	Fjäder.....	Spring		
19	2				1136-0256-01	Bygel	Plate		
20	4				9847-8016-16	Skruv	Screw		
21	1				1136-0119-01	P- bromsarm	P- brake lever		
22	1				9675-0011-00	Starlock	Starlock		
23	1				1136-0392-01	Knopp	Knob		
24	1				9747-1031-02	Låsmutter	Lock nut		
31	1				1136-0233-01	Pinnbult	Stud bolt		
32	1				9712-0831-02	Låsmutter	Lock nut		
33	1				1136-0088-01	Bricka	Washer		
34	1				1136-0529-01	Spakhållare	Gear lever bracket		
35	1				1136-0490-01	Växelspak	Gear lever		
36	1				1136-0212-01	Fjäder.....	Spring		
37	1				9997-0880-16	Skruv	Screw		
38	1				9747-0831-02	Mutter.....	Lock nut		
39	1				9699-0056-02	Planbricka.....	Flat washer		
40	1				9712-0831-02	Låsmutter	Lock nut.....		
41	1				1136-0197-01	Handtag	Knob		
42	1				1136-0107-01	Växelstag	Shifter rod		
43	1				1136-0093-01	Kulled	Ball joint		
44	1				9683-0030-02	Låsbricka	Lock washer		
45	1				9799-0831-02	Mutter.....	Nut		
46	1				1136-0187-01	Växelarm	Gearshift arm		
47	1				9997-0640-12	Skruv	Screw		
48	2				9699-0035-02	Planbricka.....	Flat washer		
49	1				9747-0631-02	Låsmutter	Lock nut.....		
50	1				9599-0070-02	Saxsprint	Split pin.....		

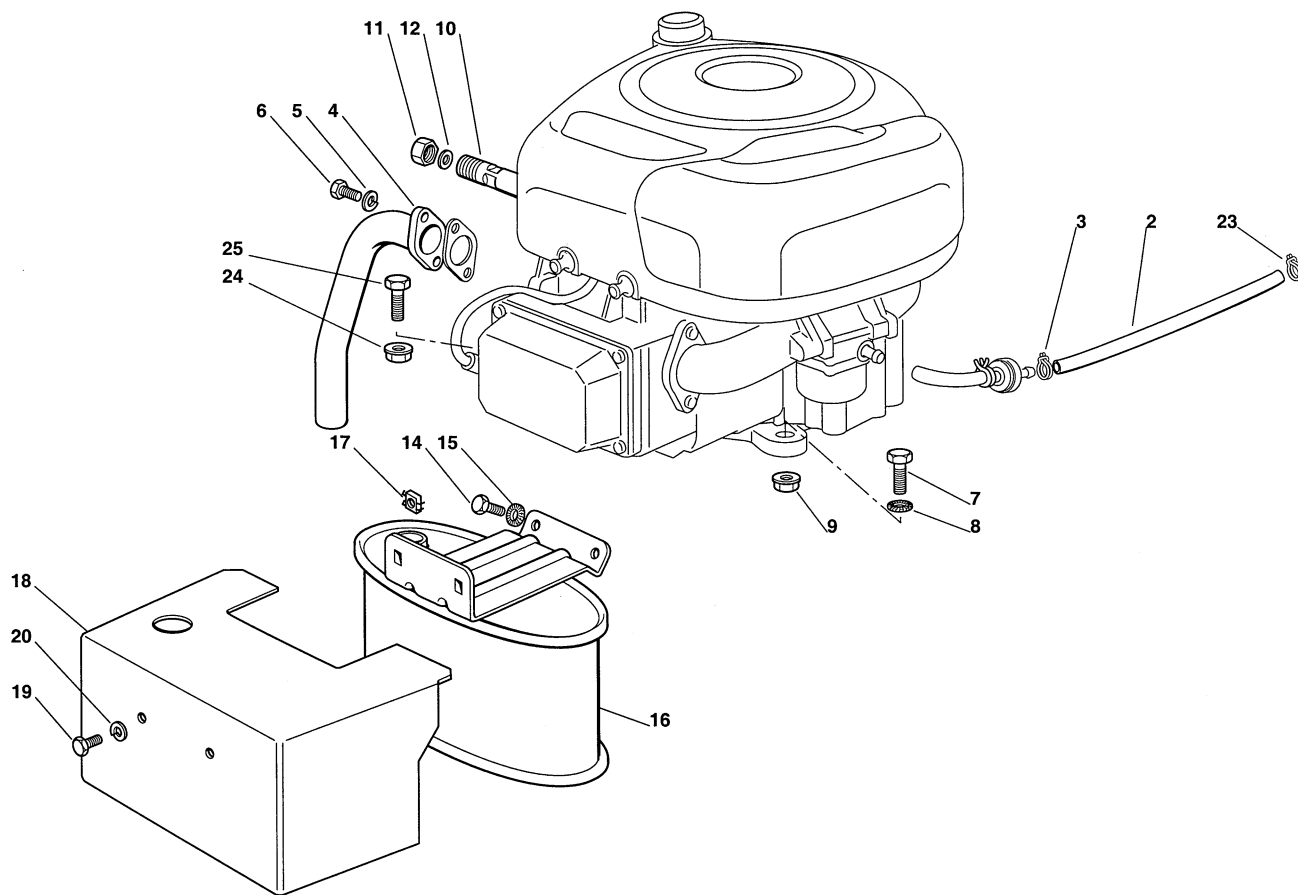


Utgåva Issue 2004- 13		Bildnr Picture No 1215A		ESTATE TORNADO HST BROMSREGLAGE DRIVREGLAGE		ESTATE TORNADO HST BRAKE CONTROL DRIVE CONTROL		Sida Page 104	
Pos. Fig.	Antal/Quantity				Art nr Part No	Benämning	Description	Sats Kit	Anmärkning Notes
	2522								
1	1				1136-0510-01	Pedal	Pedal		Inkl. pos 55 - 56
2	1				1136-0151-01	Pedalskydd	Pedal cover		
3	1				1136-0254-01	Bygel	Clamp		
4	4				9847-8016-16	Skruv	Screw		
5	1				1136-0117-01	Bromsstång	Brake rod		
6	1				9699-0090-02	Planbricka	Flat washer		
7	1				9675-0012-02	Starlock	Locking washer		
8	1				1136-0248-01	Ledbult	Pivot bolt		
9	1				1136-0218-01	Fjäder	Spring		
10	2				9699-0035-02	Planbricka	Flat washer		
11	1				1136-0329-01	Bygel	Clamp		
12	1				9799-1031-02	Mutter	Nut		
13	1				9747-1031-02	Låsmutter	Lock nut		
14	1				9699-0090-02	Planbricka	Flat washer		
15	1				9747-0831-02	Mutter	Lock nut		
31	1				1136-0441-01	Spärraxel	Axle		
32	1				1136-0217-01	Fjäder	Spring		
33	2				1136-0256-01	Bygel	Plate		
34	4				9847-8016-16	Skruv	Screw		
35	1				1136-0119-01	P- bromsarm	P- brake lever		
36	1				9675-0011-00	Starlock	Starlock		
37	1				1136-0392-01	Knopp	Knob		
51	1				1136-0507-01	Drivpedal	Drive pedal		
52	1				1136-0149-01	Pedalskydd- fram	Pedal cover- front		
53	1				1136-0150-01	Pedalskydd- bak	Pedal cover- rear		
54	1				1136-1495-01	Fäste kpl	Support assy		
55	2				1136-0121-01	• Bussning	• Bushing		
56	1				9501-0500-00	• Smörjnippel	• Grease joint		
57	2				9997-0616-16	Skruv	Screw		
58	2				9739-0631-22	Mutter	Nut		
59	1				1136-0500-01	Pedalaxel	Pedal axle		
60	2				9650-0020-04	Spårring	Circlip		
61	1				1136-0090-01	Bricka	Washer		
62	1				9997-0816-16	Skruv	Screw		
63	1				9683-0030-02	Låsbricka	Lock washer		
64	1				1136-0118-01	Stag	Drive rod		
65	1				1136-0241-01	Ledbult	Pivot bolt		
66	1				1136-0247-01	Ledbult	Pivot bolt		
67	2				9799-0831-02	Mutter	Nut		
68	2				9747-0831-02	Mutter	Lock nut		
69	1				9699-0035-02	Planbricka	Flat washer		
70	1				9699-0060-02	Planbricka	Flat washer		
71	1				9747-0631-02	Låsmutter	Lock nut		
72	1				1136-0533-01	Fäste	Support		
73	1				9699-0060-02	Planbricka	Flat washer		
74	1				9747-0631-02	Låsmutter	Lock nut		
75	1				9997-0620-16	Skruv	Screw		
76	1				9747-0631-02	Låsmutter	Lock nut		
77	1				1136-0330-01	Bygel	Clamp		
78	2				9848-8013-16	Skruv	Screw		
80	1				1136-0407-01	Plåt	Plate		
81	2				1136-1214-01	Skruv	Screw		
82	2				9683-0005-02	Låsbricka	Lock washer		
83	2				9799-0331-02	Mutter	Nut		

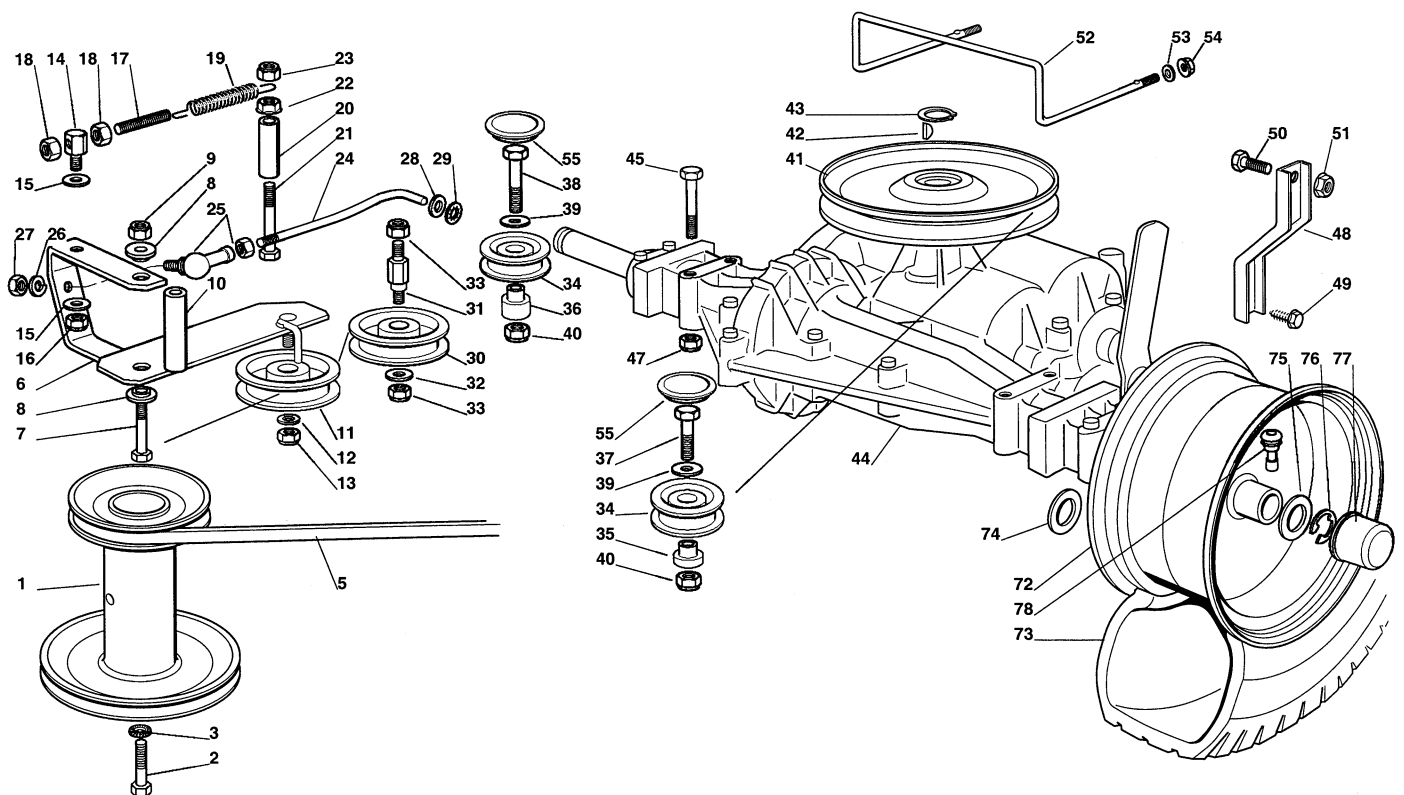
X



Utgåva Issue 2004- 13		Bildnr Picture No 1447B		ESTATE TORNADO ESTATE TORNADO HST ELUTRUSTNING		ESTATE TORNADO ESTATE TORNADO HST EL. EQUIPMENT		Sida Page 106	
Pos. Fig.	Antal/Quantity				Art nr Part No	Benämning	Description	Sats Kit	Anmärkning Notes
	2521	2522							
1	1	1			1136- 1035- 01	Kabelhärva.....	Harness.....		
2	1	1			1136- 0919- 01	Elektronikkort	Electronic card		
3	2	2			9847- 7813- 16	Skruv	Screw		
4	1	1			1136- 0428- 01	• Säkring	• Fuse		6.3 A
5	1				786194	Brytare.....	Neutral start switch		Neutral
6	3	3			1136- 0073- 01	Mikrobrytare.....	Micro switch		
10	1	1			1136- 0469- 01	Kabelhärva.....	Harness.....		Inkl. pos 11
11	1	1			1136- 0056- 01	• Tändningslås	• Ignition switch		Inkl. pos 12 - 13
12	1	1			1136- 0049- 01	• • Mutter	• • Nut		
13	1	1			1134- 4097- 01	• • Täckkåpa.....	• • Cap		
14	1	1			1134- 2848- 01	Tändningsnyckel.....	Ignition key		
15	1	1			1136- 0065- 01	Startrelä.....	Solenoid.....		
16	2	2			9997- 0620- 16	Skruv	Screw		
17	2	2			9794- 5131- 02	Mutter.....	Nut		
18	1	1			1136- 0055- 01	Brytare.....	Switch		Strålkastare/light
19	1	1			1136- 0468- 01	Kabel	Cable		Inkl. pos 20
20	2	2			1136- 0429- 01	• Lamphållare	• Lamp holder.....		
21	2	2			1136- 0058- 01	Glödlampa	Bulb		
22	1	1			1136- 0135- 01	Kabel	Cable		
23	1	1			1136- 0134- 01	Kabel	Cable		
24	1	1			1136- 0136- 01	Kabelhärva.....	Harness.....		
25	1	1			1134- 4804- 01	Batteri.....	Battery		
26	1	1			1136- 0215- 01	Fjäder.....	Spring		
27	1	1			1136- 0059- 01	Polskydd.....	Protection		
28	1	1			9795- 3531- 02	Mutter.....	Nut		
29	4	4			1136- 0427- 01	Kabelhållare	Cable holder		
30	1	1			1136- 0426- 01	Kabelhållare	Cable holder		
31		1			1136- 0076- 01	Mikrobrytare.....	Micro switch		
32		1			1136- 0865- 01	Kabel	Cable		
33	2	2			9739- 0631- 22	Mutter.....	Nut		
99	1	1			1136- 1108- 01	Tillbehörspåse	Key outfit.....		Inkl. pos 4, 14

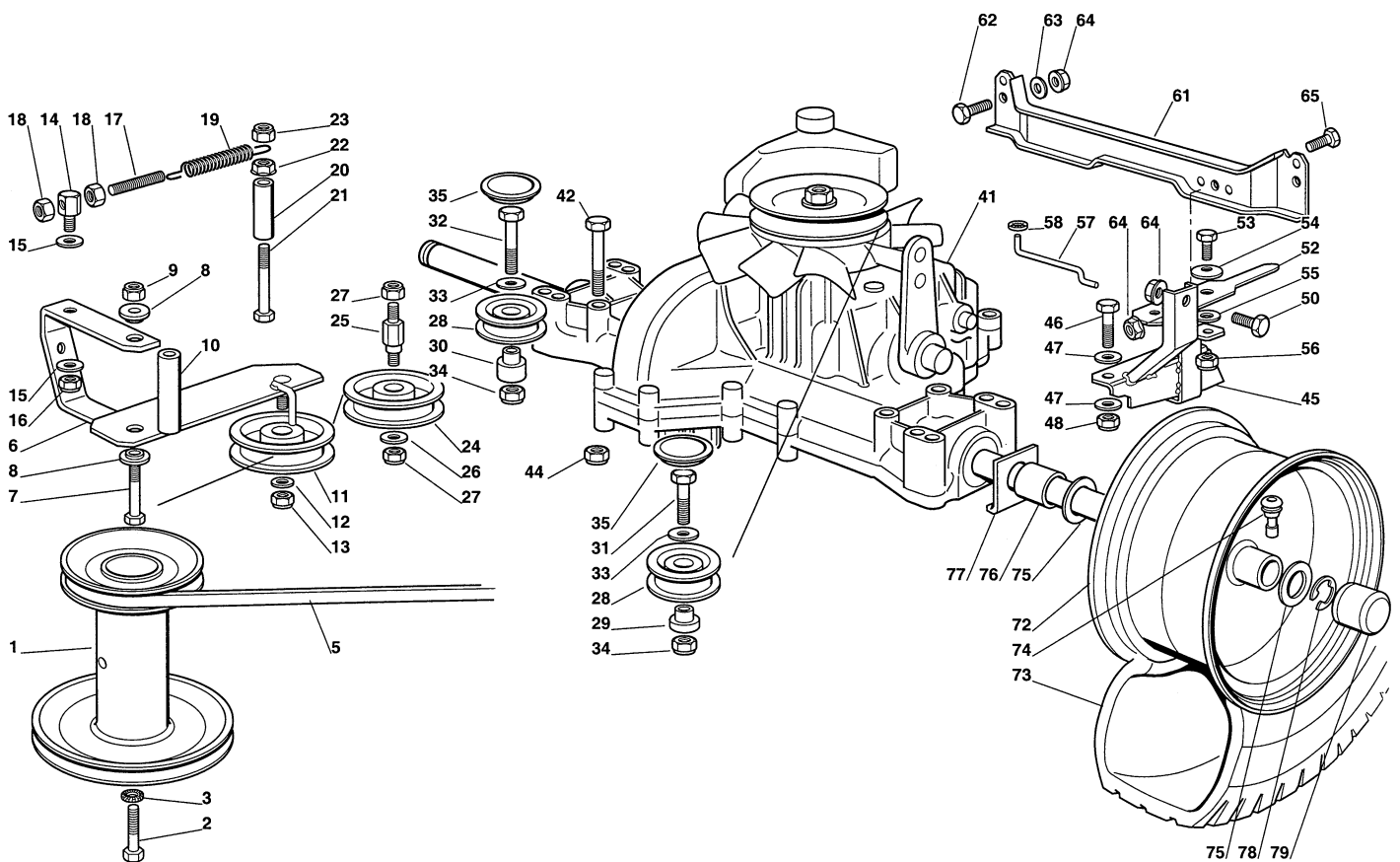


Utgåva Issue 2004- 13		Bildnr Picture No 1701		ESTATE TORNADO ESTATE TORNADO HST MOTOR		ESTATE TORNADO ESTATE TORNADO HST ENGINE		Sida Page 108	
Pos. Fig.	Antal/Quantity				Art nr Part No	Benämning	Description	Sats Kit	Anmärkning Notes
	2521 2522								
2	2				1136-0354-01	Bränsleslang	Fuel hose		L = 40 mm
3	1				1136-0045-01	Slangklämma	Hose clamp		
4	1				1136-1467-01	Avgasrör	Exhaust conn. tube		
5	2				9683-0030-02	Låsbricka	Lock washer		
6	2				9988-3619-16	Skruv	Screw		
7	1				9997-0840-16	Skruv	Screw		
8	1				9677-0009-02	Låsbricka	Lock washer		
9	1				9739-0831-22	Mutter	Nut		
10	1				1136-0273-01	Oljeavtappningsrör	Oil drain tube		
11	1				1136-0066-01	Oljeavtappningsplugg	Oil drain plug		
12	1				1136-0054-01	Tätningssring	Oil seal		L = 35 mm
14	2				9997-0820-16	Skruv	Screw		
15	2				9677-0009-02	Låsbricka	Lock washer		
16	1				1136-1054-01	Ljuddämpare	Muffler		
17	2				1136-0004-01	Fyrkantmutter	Square nut		
18	1				1136-1048-01	Skydd	Guard		
19	2				9997-0816-16	Skruv	Screw		
20	2				9683-0030-02	Låsbricka	Lock washer		
23	1				1136-0046-01	Slangklämma	Hose clamp		
24	3				9739-0831-22	Mutter	Nut		
25	3				9997-0835-12	Skruv	Screw		



Utgåva Issue		Bildnr Picture No		ESTATE TORNADO TRANSMISSION		ESTATE TORNADO TRANSMISSION		Sida Page	
2004- 13		1217						110	
Pos. Fig.	Antal/Quantity				Art nr Part No	Benämning	Description	Sats Kit	Anmärkning Notes
	2521								
1	1				1136-0286-01	Motorremskiva	Engine belt pulley		Peerless MST 205-535
2	1				9987-5351-12	Skruv	Screw		
3	1				9683-0045-02	Bricka	Washer		
5	1				1136-0433-01	Kilrem	V- belt		
6	1				1136-0489-01	Spännarm	Tension arm		
7	1				9997-0630-12	Skruv	Screw		
8	2				1136-0123-01	Bussning	Bushing		
9	1				9747-0831-02	Mutter	Lock nut		
10	1				1136-0166-01	Distans	Spacer		
11	1				1136-0289-01	Spännrulle	Idler pulley		
12	1				9699-0056-02	Planbricka	Flat washer		
13	1				9747-0831-02	Mutter	Lock nut		
14	1				1136-0235-01	Ledbult	Pivot bolt		
15	2				1136-0309-01	Bricka	Washer		
16	1				9747-0831-02	Mutter	Lock nut		
17	1				1136-0348-01	Spännstång	Tie rod		
18	2				9799-0831-02	Mutter	Nut		
19	1				1136-0208-01	Fjäder	Spring		
20	1				1136-0162-01	Distans	Spacer		
21	1				9997-0880-16	Skruv	Screw		
22	1				9739-0831-22	Mutter	Nut		
23	1				9747-0831-02	Mutter	Lock nut		
24	1				1136-0346-01	Spännstång	Tie rod		
25	1				1136-0093-01	Kulled	Ball joint		
26	1				9683-0030-02	Låsbricka	Lock washer		
27	1				9799-0831-02	Mutter	Nut		
28	1				9699-0090-02	Planbricka	Flat washer		
29	1				9675-0012-02	Starlock	Locking washer		
30	1				1136-0290-01	Remrulle	Belt roller		
31	1				1136-0234-01	Pinnbult	Stud bolt		
32	1				9699-0056-02	Planbricka	Flat washer		
33	2				9747-0831-02	Mutter	Lock nut		
34	2				1136-0915-01	Remrulle	Belt roller		
35	1				1136-0167-01	Distans- vä	Spacer- LH		
36	1				1136-0164-01	Distans- hö	Spacer- RH		
37	1				9997-0835-12	Skruv	Screw		
38	1				9997-0845-12	Skruv	Screw		
39	2				9699-0056-02	Planbricka	Flat washer		
40	2				9747-0831-02	Mutter	Lock nut		
41	1				1136-0520-01	Remskiva	Belt pulley		
42	1				9600-0050-00	Woodruffkil	Key		
43	1				9650-0016-04	Spärring	Lock ring		
44	1				1136-0050-01	Transaxel	Transaxle		
45	4				9997-0860-16	Skruv	Screw		
47	4				9739-0831-22	Mutter	Nut		
48	2				1136-0325-01	Momentstag	Stay		
49	2				1136-0017-01	Skruv	Screw		
50	2				9997-0816-16	Skruv	Screw		
51	2				9739-0831-22	Mutter	Nut		
52	1				1136-0181-01	Remstyrning	Belt guide		
53	4				9699-0035-02	Planbricka	Flat washer		
54	2				9747-0831-02	Mutter	Lock nut		
55	2				1136-0868-01	Lock	Cover		
72	2				1136-0455-01	Fälg	Rim		
73	2				1136-0270-01	Däck (Turf Saver)	Tire (Turf Saver)		
73	2				1136-0272-01	Däck (Deli)	Tire (Deli)		
74	2-4				9699-0119-02	Bricka	Washer		
75	2				1136-0305-01	Bricka	Washer		
76	2				9652-0015-04	Låsring	Retaining ring		
77	2				1136-0081-01	Navkapsel	Hub cap		
78	2				9545-0500-00	Ventil	Valve		

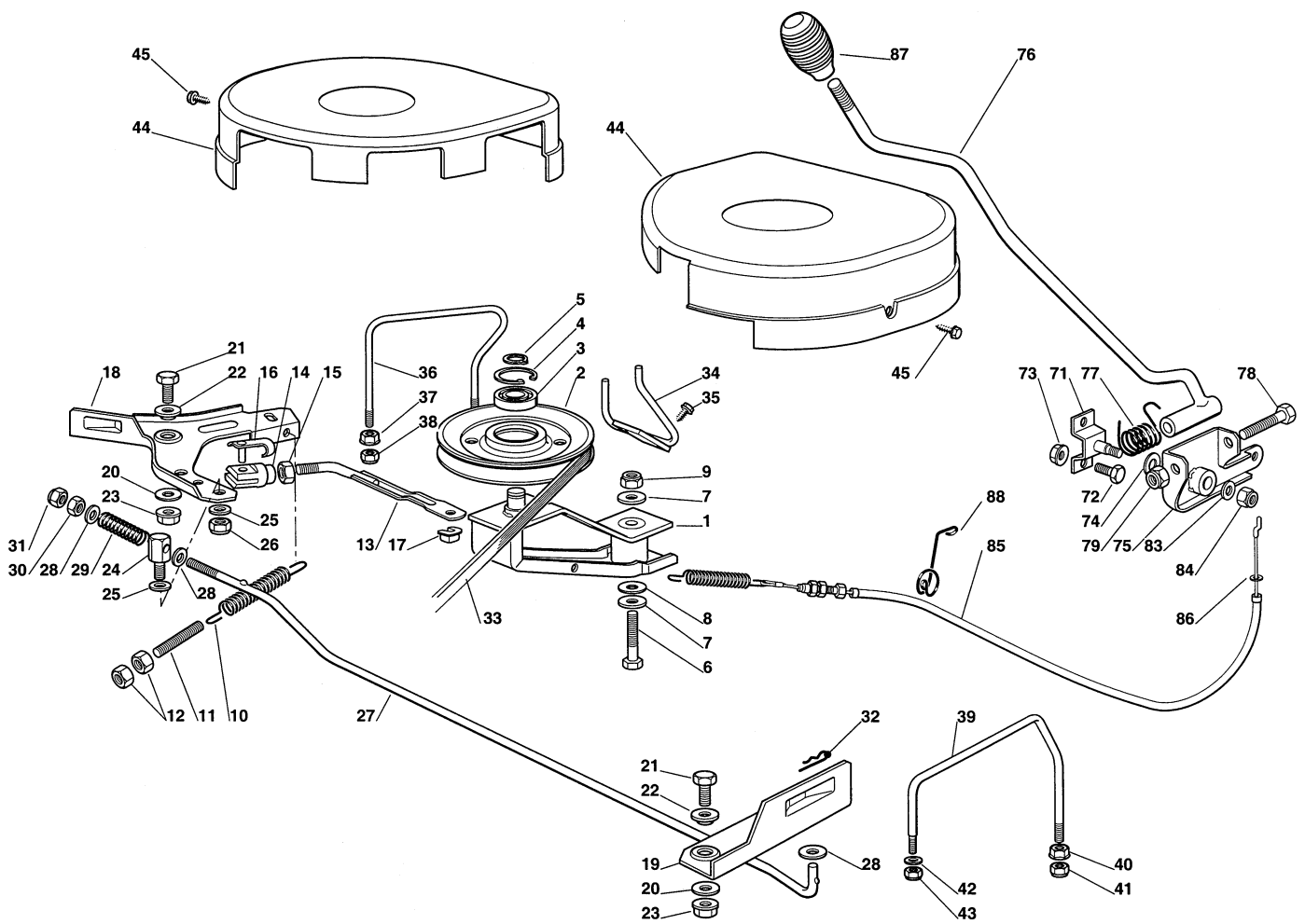
Peerless MST 205-535



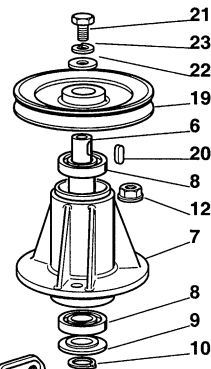
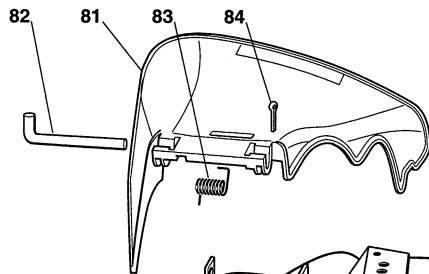
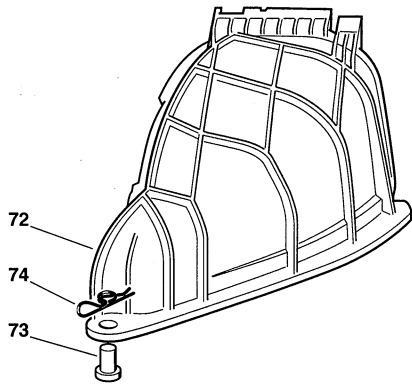
Utgåva Issue		Bildnr Picture No		ESTATE TORNADO HST TRANSMISSION		ESTATE TORNADO HST TRANSMISSION		Sida Page	
2004- 13		1564						112	
Pos. Fig.	Antal/Quantity				Art nr Part No	Benämning	Description	Sats Kit	Anmärkning Notes
	2522								
1	1				1136-0287-01	Motorremskiva	Engine belt pulley		Kanzaki K46S
2	1				9987-5351-12	Skruv	Screw		
3	1				9683-0045-02	Bricka	Washer		
5	1				1136-0432-01	Kilrem	V- belt		
6	1				1136-0489-01	Spännarm	Tension arm		
7	1				9997-0630-12	Skruv	Screw		
8	2				1136-0123-01	Bussning	Bushing		
9	1				9747-0831-02	Mutter	Lock nut		
10	1				1136-0166-01	Distans	Spacer		
11	1				1136-0289-01	Spännrulle	Idler pulley		
12	1				9699-0056-02	Planbricka	Flat washer		
13	1				9747-0831-02	Mutter	Lock nut		
14	1				1136-0235-01	Ledbult	Pivot bolt		
15	2				1136-0309-01	Bricka	Washer		
16	1				9747-0831-02	Mutter	Lock nut		
17	1				1136-0348-01	Spännstång	Tie rod		
18	2				9799-0831-02	Mutter	Nut		
19	1				1136-0208-01	Fjäder	Spring		
20	1				1136-0162-01	Distans	Spacer		
21	1				9997-0880-16	Skruv	Screw		
22	1				9739-0831-22	Mutter	Nut		
23	1				9747-0831-02	Mutter	Lock nut		
24	1				1136-0290-01	Remrulle	Belt roller		
25	1				1136-0234-01	Pinnbult	Stud bolt		
26	1				9699-0056-02	Planbricka	Flat washer		
27	2				9747-0831-02	Mutter	Lock nut		
28	2				1136-0915-01	Remrulle	Belt roller		
29	1				1136-0174-01	Distans- vä	Spacer- LH		
30	1				1136-0170-01	Distans- hö	Spacer- RH		
31	1				9997-0840-16	Skruv	Screw		
32	1				9997-0850-16	Skruv	Screw		
33	2				9699-0056-02	Planbricka	Flat washer		
34	2				9747-0831-02	Mutter	Lock nut		
35	2				1136-0868-01	Lock	Cover		
41	1				1136-0053-01	Transaxel	Transaxle		
42	4				9997-0860-16	Skruv	Screw		
44	4				9739-0831-22	Mutter	Nut		
45	1				1136-1056-01	Stöd	Support		
46	1				9997-0845-12	Skruv	Screw		
47	2				9699-0090-02	Planbricka	Flat washer		
48	1				9747-0831-02	Mutter	Lock nut		
50	1				9997-0816-16	Skruv	Screw		
52	1				1136-0190-01	Arm	Lever		
53	1				9997-0820-16	Skruv	Screw		
54	1				1136-0006-01	Fjäderbricka	Elastic washer		
55	1				1136-0309-01	Bricka	Washer		
56	1				9747-0831-02	Mutter	Lock nut		
57	1				1136-0114-01	Stag	Rod		
58	1				9675-0009-02	Starlock	Starlock		
61	1				1136-0918-01	Förstärkning	Reinforcement		
62	2				1136-0821-01	Skruv	Screw		
63	2				9699-0090-02	Planbricka	Flat washer		
64	4				9739-0831-22	Mutter	Nut		
65	1				1136-0822-01	Skruv	Screw		
72	2				1136-0455-01	Fälg	Rim		
73	2				1136-0270-01	Däck (Turf Saver)	Tire (Turf Saver)		
73	2				1136-0272-01	Däck (Deli)	Tire (Deli)		
74	2				9545-0500-00	Ventil	Valve		
75	4				9699-0119-02	Bricka	Washer		
76	2				1136-0175-01	Distans	Spacer		
77	2				1136-0312-01	Bricka	Washer		
78	2				9652-0015-04	Låsring	Retaining ring		
79	2				1136-0081-01	Navkapsel	Hub cap		



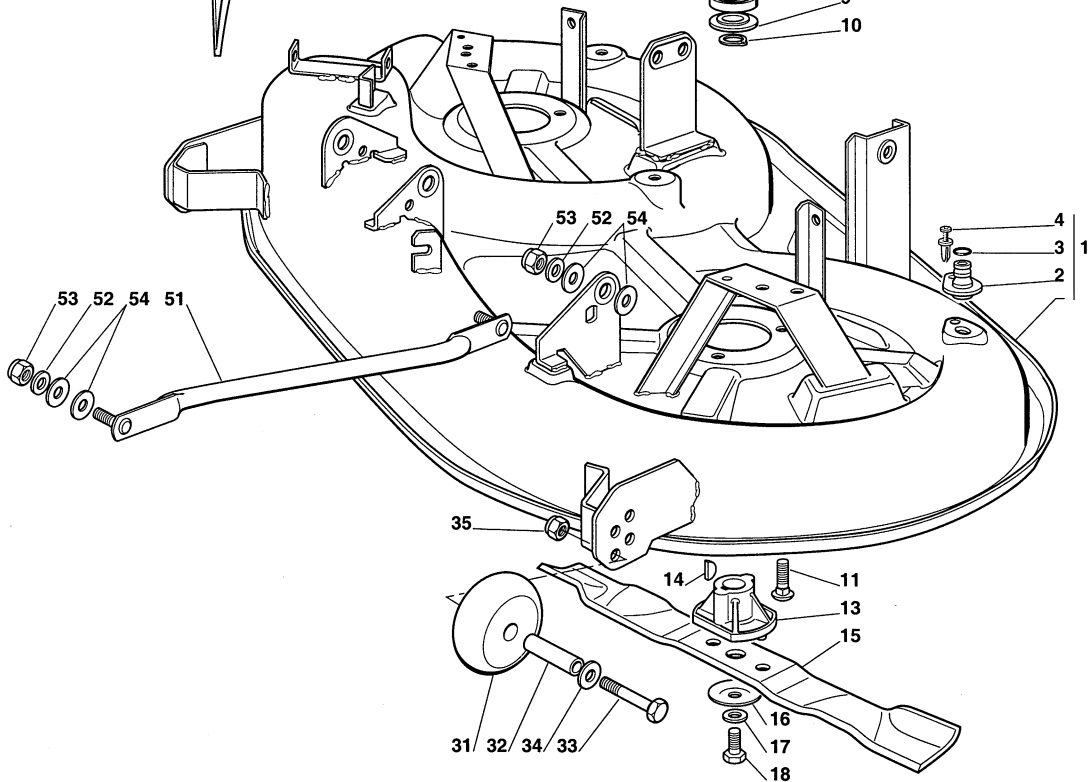
Utgåva Issue 2004- 13		Bildnr Picture No 1702		ESTATE TORNADO ESTATE TORNADO HST AGGREGATSLYFT		ESTATE TORNADO ESTATE TORNADO HST MOWER DECK LIFT		Sida Page 114	
Pos. Fig.	Antal/Quantity				Art nr Part No	Benämning	Description	Sats Kit	Anmärkning Notes
	2521	2522							
1	1				1136-0487-01	Lyftspak kpl	Lift lever assy		Inkl. pos 2 - 9
2	1				1136-0493-01	• Lyftspak	• Lift lever		
3	1				1136-0298-01	• Tryckknapp	• Button		
4	1				1136-0222-01	• Spärrhake	• Dog		
5	1				1136-0227-01	• Sprint.....	• Pin.....		
6	1				1136-0105-01	• Tryckstång	• Push rod		
7	1				1136-0193-01	• Handtag	• Handle.....		
8	1				1136-0203-01	• Fjäder	• Spring		
9	1				9675-0012-02	• Starlock	• Locking washer.....		
10	1				1136-0444-01	Lyftaxel	Axle		
11	2				1136-0078-01	Bussning	Bushing.....		
12	1				1136-0163-01	Distans	Spacer.....		
13	1				9699-0119-02	Bricka	Washer		
14	2				9595-0235-00	Spännstift	Locating pin		
15	1				1136-0319-01	Höjdställn.segment.....	Height adjust sector		
16	2				9997-0816-16	Skruv	Screw		
17	2				9739-0831-22	Mutter.....	Nut		
18	1				1136-0460-01	Lyftwire.....	Lift wire		
19	1				1136-0291-01	Wirerulle	Cable pulley.....		
20	1				1136-0232-01	Distans	Spacer.....		
21	1				9997-0850-16	Skruv	Screw		
22	1				9699-0056-02	Planbricka	Flat washer		
23	1				9739-0831-22	Mutter.....	Nut		
24	1				1136-0443-01	Lyftaxel	Lift axle		
25	2				1136-0253-01	Bygel	Clamp		
26	4				9997-0616-16	Skruv	Screw		
27	4				9739-0631-22	Mutter.....	Nut		
28	1				1136-0492-01	Lyftarm	Lift arm		
29	2				1136-0255-01	Bygel	Clamp.....		
30	4				9847-8016-16	Skruv	Screw		
31	1				1136-0108-01	Lyftstag.....	Lift rod		
32	1				1136-0235-01	Ledbult	Pivot bolt.....		
33	1				9799-0831-02	Mutter.....	Nut		
34	1				9747-0831-02	Mutter.....	Lock nut.....		
35	2				1136-0309-01	Bricka	Washer		
36	1				9747-0831-02	Mutter.....	Lock nut		
37	1				9699-0090-02	Planbricka.....	Flat washer		
38	1				1136-0095-01	Låsnål	Hair pin		
51	1				1136-0347-01	Lyftlänk	Lift tie rod		
52	1				1136-0231-01	Ledbult	Pivot bolt.....		
53	1				9699-0035-02	Planbricka.....	Flat washer		
54	1				1136-0308-01	Bricka	Washer		
55	1				1136-0095-01	Låsnål	Hair pin		
56	2				1136-0308-01	Bricka	Washer		
57	2				9747-1031-02	Låsmutter	Lock nut.....		
58	1				9799-1031-02	Mutter.....	Nut		
61	1				1136-0347-01	Lyftlänk	Lift tie rod		
62	1				1136-0231-01	Ledbult	Pivot bolt.....		
63	1				9699-0035-02	Planbricka.....	Flat washer		
64	1				1136-0308-01	Bricka	Washer		
65	1				1136-0095-01	Låsnål	Hair pin		
66	2				1136-0308-01	Bricka	Washer		
67	2				9747-1031-02	Låsmutter	Lock nut.....		
68	1				9799-1031-02	Mutter.....	Nut		
71	1				1136-0928-01	Spännlänk.....	Tie rod.....		
72	1				1136-0231-01	Ledbult	Pivot bolt.....		
73	2				1136-0308-01	Bricka	Washer		
74	2				9747-1031-02	Låsmutter	Lock nut.....		
75	1				9699-0035-02	Planbricka.....	Flat washer		
76	1				1136-0308-01	Bricka	Washer		
77	1				1136-0095-01	Låsnål	Hair pin		
78	1				9799-1031-02	Mutter.....	Nut		



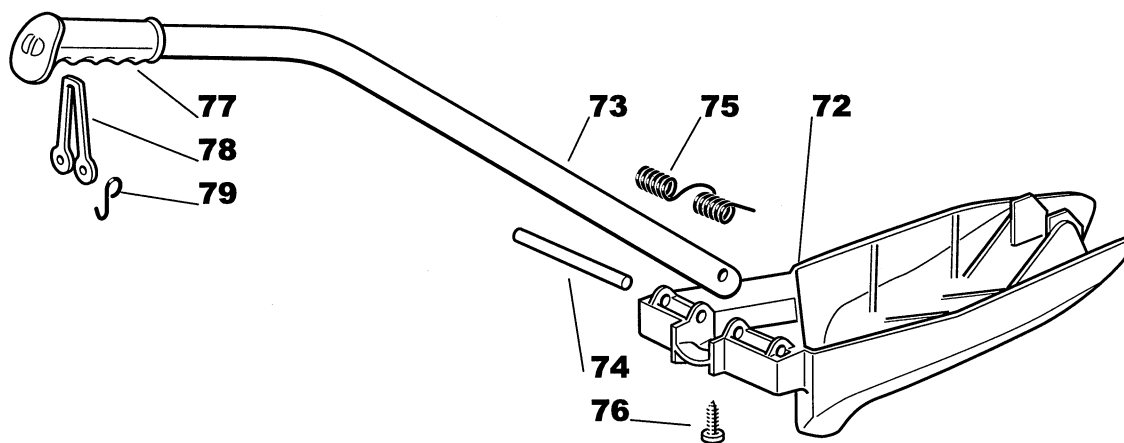
Utgåva Issue 2004- 13		Bildnr Picture No 1448A		ESTATE TORNADO ESTATE TORNADO HST AGGREGATSINKOPPLING		ESTATE TORNADO ESTATE TORNADO HST MOWER DECK ENGAGEMENT		Sida Page 116	
Pos. Fig.	Antal/Quantity				Art nr Part No	Benämning	Description	Sats Kit	Anmärkning Notes
	2521	2522							
1	1				1136-0494-01	Spännarm	Tension arm		
2	1				1136-0917-01	Remskiva	Pulley		
3	1				1136-0070-01	Kullager	Ball bearing		
4	1				9651-0035-04	Låsring	Lock ring		
5	1				9650-0015-04	Låsring	Lock ring		
6	1				9997-0890-12	Skruv	Screw		
7	2				1136-0014-01	Bricka	Washer		
8	1				1136-0089-01	Bricka	Washer		
9	1				9747-0831-02	Mutter	Lock nut		
10	1				1136-0859-01	Fjäder	Spring		
11	1				1136-0348-01	Spännstång	Tie rod		
12	2				9799-0831-02	Mutter	Nut		
13	1				1136-1028-01	Stag	Rod		
14	1				1136-0836-01	Gaffel	Fork		
15	1				9799-0831-02	Mutter	Nut		
16	1				1136-0835-01	Låsbult	Clip		
17	1				1136-0009-01	Låsplatta	Lock plate		
18	1				1136-0886-01	Arm- hö	Lever- RH		
19	1				1136-0885-01	Arm- vä	Lever- LH		
20	2				1136-0089-01	Bricka	Washer		
21	2				9997-0816-16	Skruv	Screw		
22	2				1136-0079-01	Bussning	Bushing		
23	2				9739-0831-22	Mutter	Nut		
24	1				1136-0904-01	Sprint	Pin		
25	2				1136-0309-01	Bricka	Washer		
26	1				9747-0831-02	Mutter	Lock nut		
27	1				1136-0862-01	Stång	Rod		
28	3				9699-0090-02	Planbricka	Flat washer		
29	1				1136-0895-01	Fjäder	Spring		
30	1				9799-0831-02	Mutter	Nut		
31	1				9747-0831-02	Mutter	Lock nut		
32	1				1136-0095-01	Låsnål	Hair pin		
33	1				1136-1022-01	Drivrem	Drive belt		
34	1				1136-0878-01	Remstyrning	Belt guide		
35	2				9847-8116-16	Skruv	Screw		
36	1				1136-0880-01	Remstyrning	Belt guide		
37	2				9739-0831-22	Mutter	Nut		
38	2				9747-0831-02	Mutter	Lock nut		
39	1				1136-0879-01	Remstyrning	Belt guide		
40	1				9739-0831-22	Mutter	Nut		
41	1				9747-0831-02	Mutter	Lock nut		
42	1				9699-0035-02	Planbricka	Flat washer		
43	1				9747-0631-02	Låsmutter	Lock nut		
44	2				1136-0864-01	Remkåpa	Belt cover		
45	4				9848-8013-16	Skruv	Screw		
71	1				1136-0537-01	Fäste	Support		
72	2				9997-0816-16	Skruv	Screw		
73	2				9739-0831-22	Mutter	Nut		
74	1				1136-0088-01	Bricka	Washer		
75	1				1136-0528-01	Spakhållare	Lever holder		
76	1				1136-0491-01	Inkopplingsspak	Engagement lever		
77	1				1136-0213-01	Fjäder	Spring		
78	1				9997-0880-16	Skruv	Screw		
79	1				9747-0831-02	Mutter	Lock nut		
83	1				9699-0056-02	Planbricka	Flat washer		
84	1				9712-0831-02	Låsmutter	Lock nut		
85	1				1136-1075-01	Inkopplingswire	Cable		
86	1				9699-0056-02	Planbricka	Flat washer		
87	1				1136-0197-01	Handtag	Knob		
88	1				1136-0957-01	Fjäder	Spring		



5
6 - 10

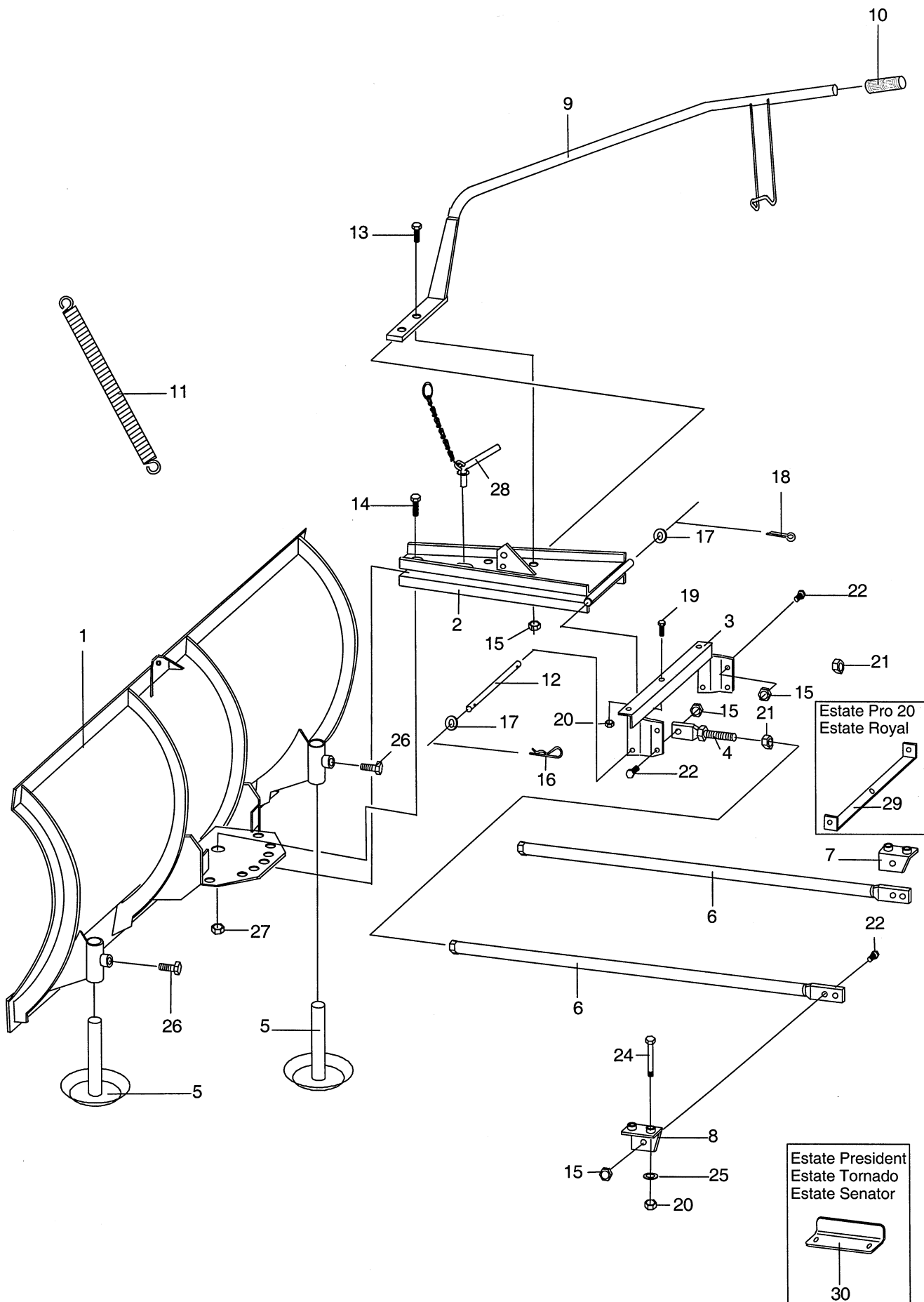


Utgåva Issue 2004- 13		Bildnr Picture No 1449B		ESTATE TORNADO ESTATE TORNADO HST KLIPPAGGREGAT		ESTATE TORNADO ESTATE TORNADO HST MOWER DECK		Sida Page 118	
Pos. Fig.	Antal/Quantity				Art nr Part No	Benämning	Description	Sats Kit	Anmärkning Notes
	2521	2522							
1	1				1136-1044-01	Klippagggregatskåpa	Mower deck casing		Inkl. pos 2 - 4
2	2				1136-0120-01	• Vattenslangnippel	• Water hose connection.....		
3	2				1136-0068-01	• O- ring.....	• O- ring		
4	2				1136-0012-01	• Nit.....	• Rivet.....		
5	2				1136-0481-01	Lagerbox kpl.....	Bearing box assy.....		Inkl. pos 6 - 10
6	2				1136-0099-01	• Knivaxel	• Blade shaft		
8	4				1136-0069-01	• Kullager	• Ball bearing		
9	2				1136-0176-01	• Dammskydd	• Dust cover.....		
10	2				9650-0020-04	• Spårning.....	• Circlip.....		
11	6				9898-0825-16	Skruv	Screw		
12	6				9739-0831-22	Mutter.....	Nut		
13	2				1136-0221-01	Knivfäste.....	Blade hub		
14	2				9600-0014-00	Kil	Key.....		
15	2				1136-1029-01	Kniv	Blade		
16	2				1136-0083-01	Fjäderbricka	Elastic washer		
17	2				1136-0015-01	Bricka	Washer.....		
18	2				9987-5238-12	Knivbult	Blade bolt.....		
19	2				1136-0916-01	Remskiva.....	Pulley		
20	2				1136-0001-01	Kil	Key.....		
21	2				9997-0820-16	Skruv	Screw		
22	2				1136-0307-01	Bricka	Washer.....		
23	2				9683-0030-02	Låsbricka	Lock washer		
31	2				1136-1052-01	Stödhjul	Anti scalp wheel		
32	2				1136-0901-01	Distans	Spacer.....		
33	2				9997-0880-16	Skruv	Screw		
34	2				9699-0056-02	Planbricka.....	Flat washer		
35	2				9739-0831-22	Mutter.....	Nut		
51	2				1136-0448-01	Stång	Equalizer rod		
52	4				9699-0035-02	Planbricka.....	Flat washer		
53	4				9747-1031-02	Låsmutter	Lock nut.....		
54	8				1136-0308-01	Bricka	Washer.....		
72	1				1136-1107-01	Deflektor	Deflector		
73	1				1136-0229-01	Sprint.....	Pin		
74	1				9598-0002-02	Låsnål.....	Pin lock		
81	1				1136-0910-01	Utkastskydd.....	Discharge protection.....		
82	1				1136-0902-01	Axel	Pivot.....		
83	1				1136-0894-01	Fjäder.....	Spring		
84	1				9599-0070-02	Saxsprint	Split pin.....		

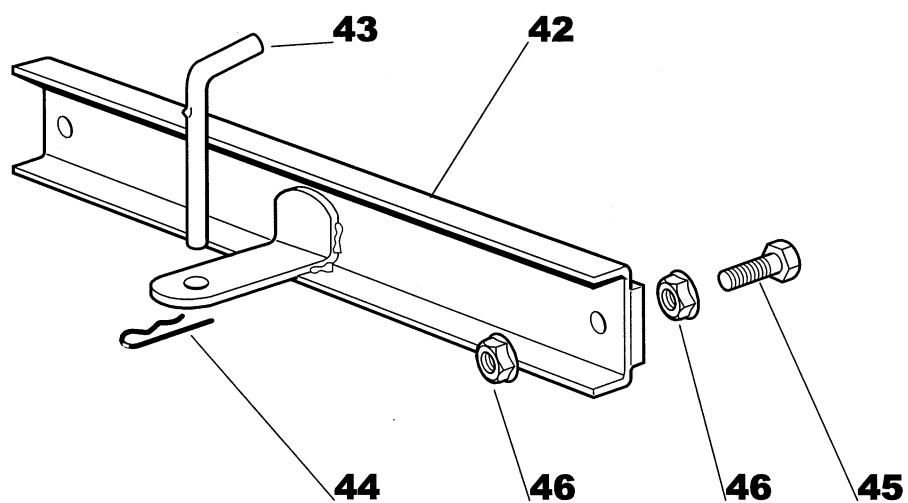




Utgåva Issue 2004- 13		Bildnr Picture No 1559		MULCHINGSATS ART.NR 13- 0935- 11		MULCHING KIT ART.NO 13- 0935- 11		Sida Page 160	
Pos. Fig.	Antal/Quantity				Art nr Part No	Benämning	Description	Sats Kit	Anmärkning Notes
	0935								
72	1				1136- 1233- 01	Deflektor	Deflector		
73	1				1136- 1237- 01	Handtagsrör.....	Handle tube.....		
74	1				1136- 1242- 01	Sprint.....	Pin		
75	1				1136- 1239- 01	Fjäder.....	Spring		
76	1				9836- 9635- 12	Skruv	Screw		
77	1				1136- 0882- 01	Handtag	Handgrip		
78	1				1136- 0927- 01	Elastiskt band	Elastic tie.....		
79	2				1136- 0877- 01	Krok.....	Hook		

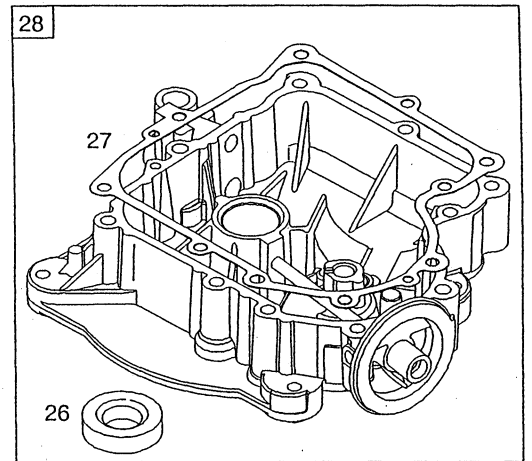
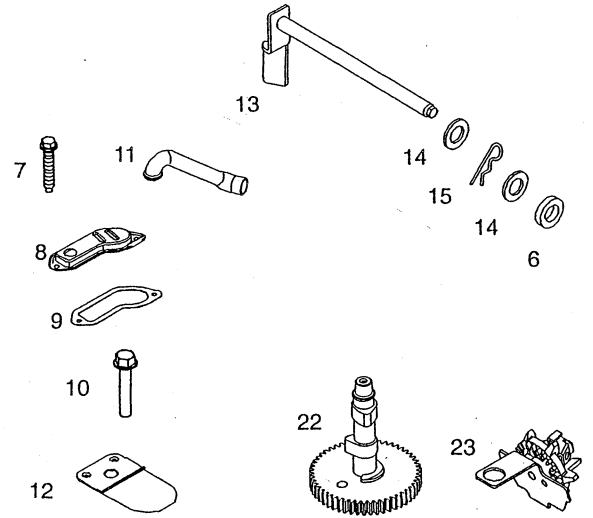
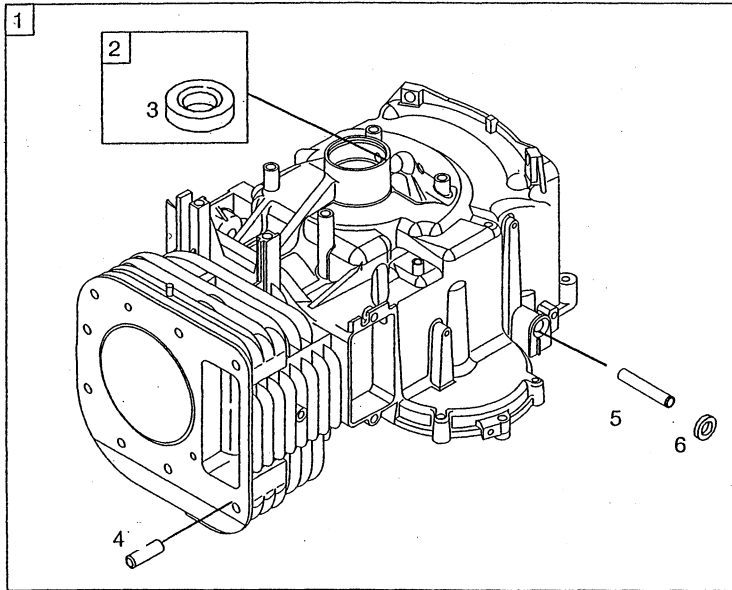


Utgåva Issue 2004- 13		Bildnr Picture No 1453		SNÖBLAD (120 cm) ART.NR 13- 0924- 11		SNOW BLADE (120 cm) ART.NO 13- 0924- 11		Sida Page 168	
Pos. Fig.	Antal/Quantity				Art nr Part No	Benämning	Description	Sats Kit	Anmärkning Notes
	0924								
1	1				1319-1528-01	Blad	Blade		
2	1				1319-1812-01	Bladfäste	Blade holder		
3	1				1319-1816-01	Ram	Frame		
4	2				1319-1817-01	Skruv	Screw		
5	2				1319-1526-01	Släpsko	Skid		
6	2				1319-1818-01	Stag	Rod		
7	1				1319-1819-01	Stagfäste	Rod bracket		
8	1				1319-1820-01	Stagfäste	Rod bracket		
9	1				1319-1815-01	Lyftarm	Lift rod		
10	1				1319-1822-01	Handtag	Grip		
11	1				1319-1527-01	Fjäder	Spring		
12	1				1319-1821-01	Axel	Shaft		
13	2				9997-1030-16	Skruv	Screw		
14	1				1319-1551-01	Skruv	Screw		
15	8				9747-1031-02	Låsmutter	Lock nut		
16	1				1319-1692-01	Låsnål	Spring pin		
17	2				9699-0037-02	Bricka	Washer		
18	1				1319-1811-01	Saxpinne	Cotter pin		
19	3				9997-0816-16	Skruv	Screw		
20	7				9747-0831-02	Mutter	Lock nut		
21	2				9747-1031-02	Låsmutter	Lock nut		
22	6				9997-1025-16	Skruv	Screw		
24	4				9997-0880-16	Skruv	Screw		
25	4				9699-0028-02	Planbricka	Flat washer		
26	2				9997-1220-16	Skruv	Screw		
27	1				9747-1631-02	Låsmutter	Lock nut		
28	1				1319-1531-01	Sprint	Pin		
29	1				1319-1813-01	Monteringsfäste	Mounting plate		
30	1				1319-1814-01	Monteringsfäste	Mounting plate		

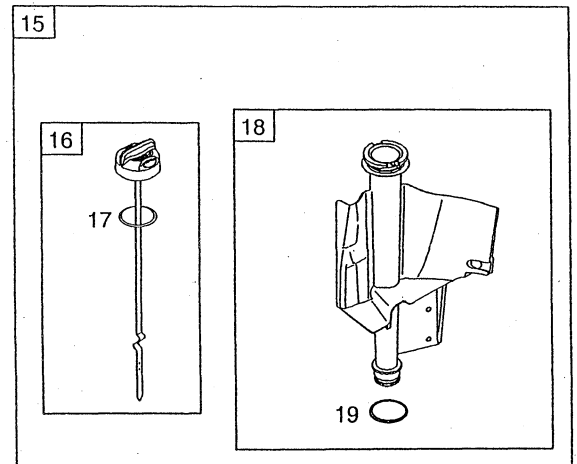
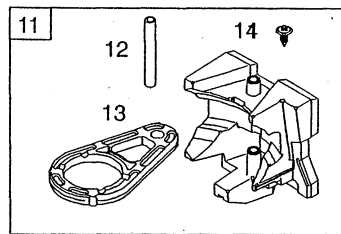
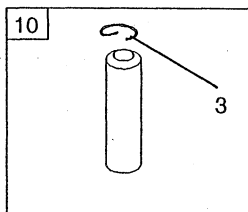
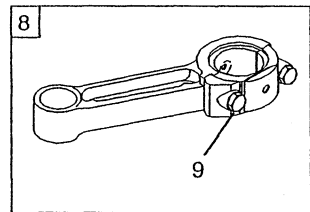
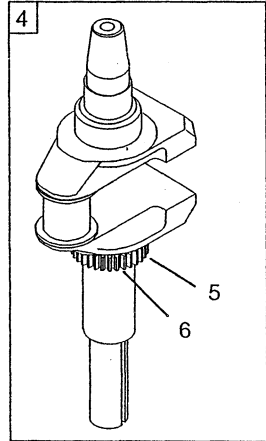
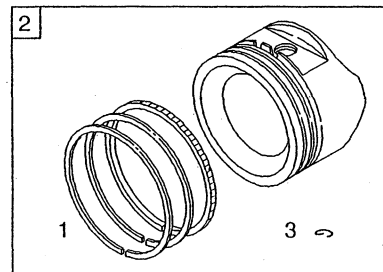


Utgåva Issue 2004- 13		Bildnr Picture No 1251		DRAG ART.NR 13- 0933- 11		TOW BAR ART.NO 13- 0933- 11		Sida Page 164	
Pos. Fig.	Antal/Quantity				Art nr Part No	Benämning	Description	Sats Kit	Anmärkning Notes
	0933								
42	1				1136-0463-01	Balk	Girder		
43	1				1136-0228-01	Dragsprint	Tow pin		
44	1				1136-0096-01	Låsnål	Hair pin		
45	2				9997-0825-16	Skruv	Screw		
46	6				9739-0831-22	Mutter	Nut		

A

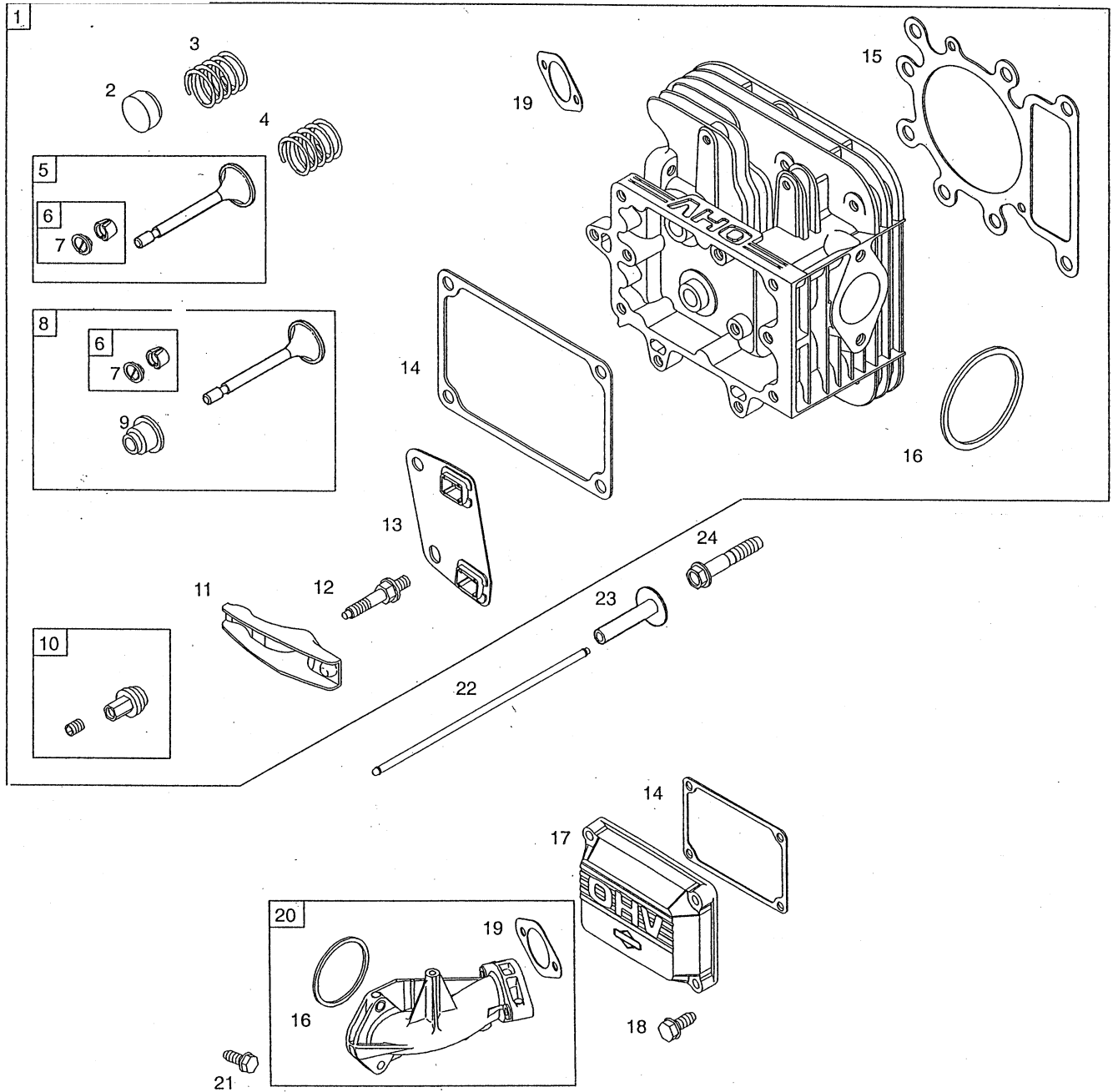


B



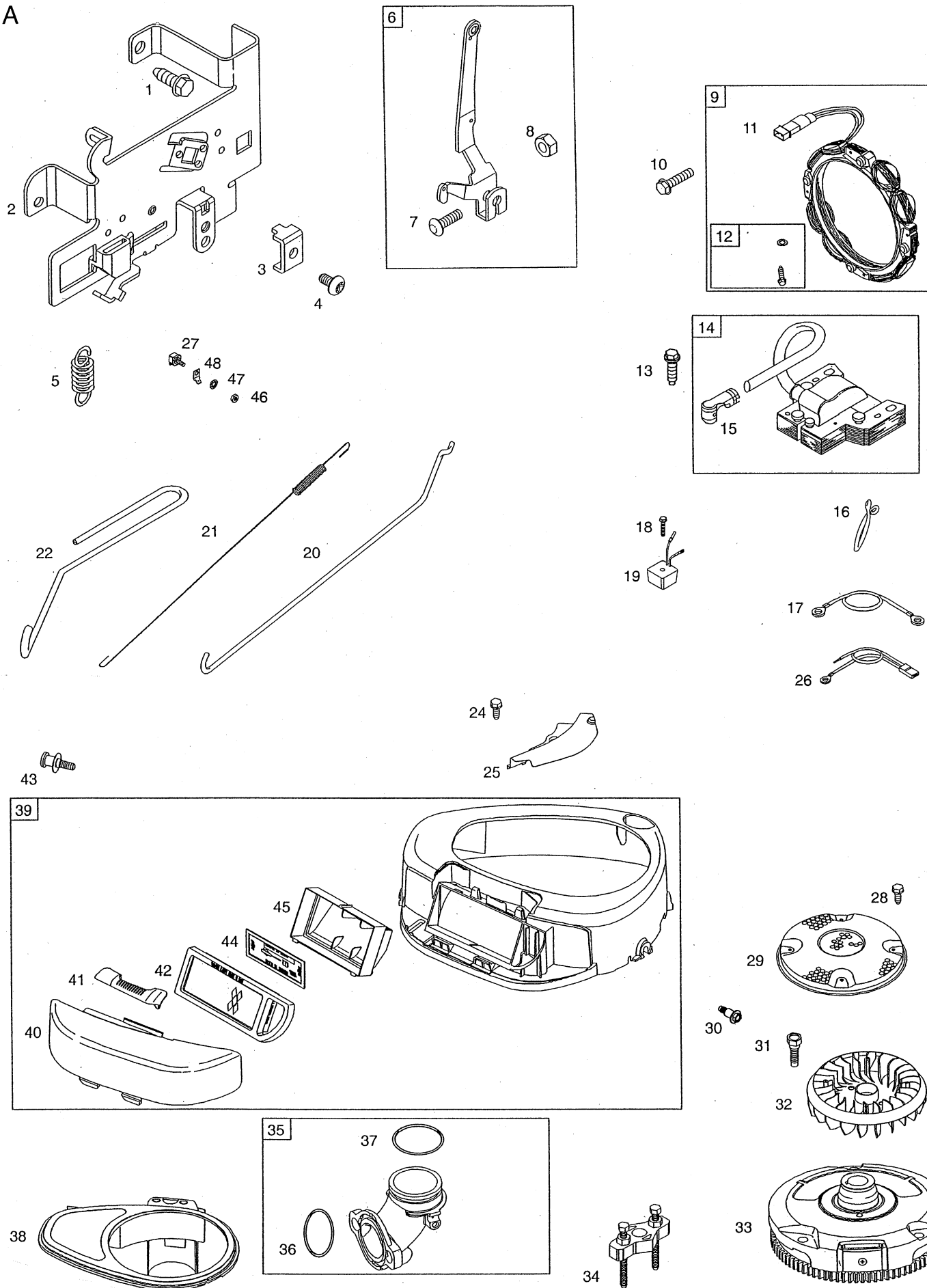
Utgåva Issue		Bildnr Picture No		BRIGGS & STRATTON 21A907 CYLINDER (A) VEVAXEL (B)		BRIGGS & STRATTON 21A907 CYLINDER (A) CRANKSHAFT (B)		Sida Page	
2004- 13		1692						196	
Pos. Fig.	Antal/Quantity				Art nr Part No	Benämning	Description	Sats Kit	Anmärkning Notes
	21A 907- 0146								
A01	1				697377	Cylinder kpl.....	Cylinder assy.....		
A02	1				399265	• Bussning.....	• Bushing.....		
A03	1				391086	• • Tätningsring.....	• • Seal.....		
A04	2				690959	• Tapp.....	• Locating pin.....		
A05	1				697144	• Bussning.....	• Bushing.....		
A06	1				692407	• Tätning.....	• Seal.....		
A07	2				697157	Skruv.....	Screw.....		
A08	1				697112	Lock.....	Cover.....		
A09	1				697109	Packning.....	Gasket.....		
A10	1				697104	Skruv.....	Screw.....		
A11	1				697113	Ventilationsrör.....	Breather tube.....		
A12	1				697124	Ventil.....	Breather reed.....		
A13	1				692012	Regulatoraxel.....	Governor crank.....		
A14	2				691691	Bricka.....	Washer.....		
A15	1				691620	Låsnål.....	Cotter pin.....		
A17	1				691909	Tändstiftshylsa.....	Spark plug boot.....		
A18	1				9400-0244-00	Tändstift.....	Spark plug.....		
A19	1				89838	Tändstiftsnyckel.....	Spark plug wrench.....		
A20	1				697359	Cylinderskydd.....	Cylinder shield.....		
A21	1				691003	Skruv.....	Screw.....		
A22	1				699016	Kamaxel.....	Camshaft.....		
A23	1				691968	Oljekastardrev.....	Oil slinger.....		
A24	1				690946	Avtappningsplugg.....	Oil drain plug.....		
A25	10				692125	Skruv.....	Screw.....		
A26	1				690947	• Tätningsring.....	• Oil seal.....		
A27	1				697110	• Packning.....	• Gasket.....		
A28	1				697106	Oljesump.....	Engine sump.....		
B01	1				698375	• Kolvringssats.....	• Ring set.....		Standard
B01	1				698377	• Kolvringssats.....	• Ring set.....		.020" oversize
B02	1				698371	Kolv kpl.....	Piston assy.....		Standard
B02	1				698373	Kolv kpl.....	Piston assy.....		.020" oversize
B03	2				698469	• Låsring.....	• Lock.....		
B04	1				697390	Vevaxel.....	Crankshaft.....		
B05	1				697128	• Drev.....	• Timing gear.....		
B06	1				691639	• Kil.....	• Timing key.....		
B07	1				222698	Kil.....	Key.....		
B08	1				697364	Vevstake.....	Connecting rod.....		
B09	2				692852	• Skruv.....	• Screw.....		
B10	1				697099	Kolvbult.....	Piston pin.....		
B11	1				697391	Motvikt.....	Counterweight.....		
B12	1				697392	• Axel.....	• Pin.....		
B13	1				697607	• Länk.....	• Link.....		
B14	2				697156	• Plugg.....	• Plug.....		
B15	1				697611	Oljesticka kpl.....	Oil dipstick assy.....		
B16	1				697086	• Oljesticka.....	• Oil dipstick.....		
B17	1				691031	• • O- ring.....	• • O- ring.....		
B18	1				697184	• Oljerör.....	• Dipstick tube.....		
B19	1				691032	• Tätning.....	• • Tube seal.....		
B20	1				698139	Skruv.....	Screw.....		

A



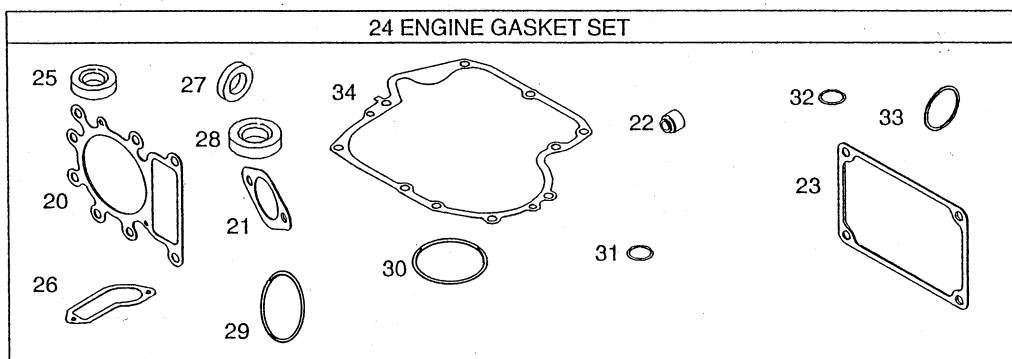
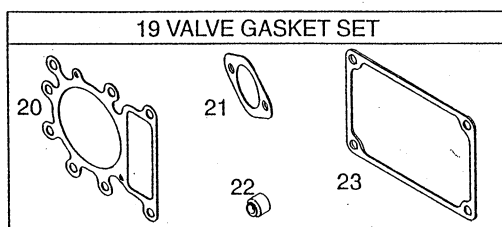
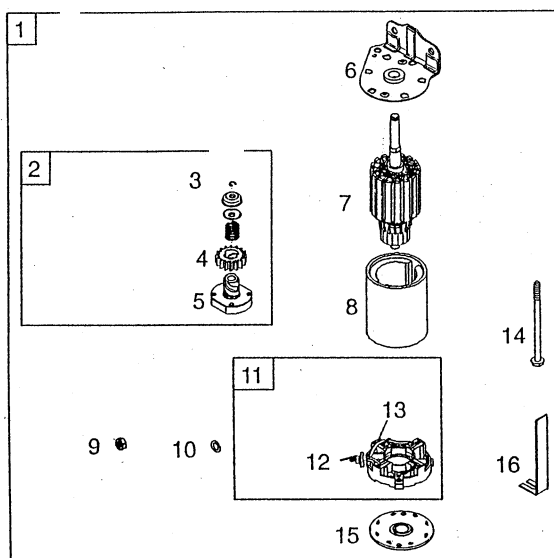
Utgåva Issue 2004- 13		Bildnr Picture No 1682		BRIGGS & STRATTON 21A907 TOPPLOCK (A)		BRIGGS & STRATTON 21A907 CYLINDER HEAD (A)		Sida Page 198	
Pos. Fig.	Antal/Quantity				Art nr Part No	Benämning	Description	Sats Kit	Anmärkning Notes
	21A 907- 0146								
A01	1				697396	Topplöck	Cylinder head		
A02	1				691843	• Ventilhuv	• Valve cap		
A03	1				691279	• Ventilfjäder	• Valve spring		
A04	1				691279	• Ventilfjäder	• Valve spring		
A05	1				495856	• Ventil- utblås	• Valve-exhaust		
A06	2				499586	• Ventilhållare	• Valve keeper		
A07	2				690964	• Ventilhållare	• Valve retainer		
A08	1				495857	• Ventil- insug	• Valve- intake		
A09	1				690968	• Ventiltätning	• Valve seal		
A10	2				691986	• Vipparmsjustering	• Rocker arm adjuster		
A11	2				691751	• Vipparm	• Rocker arm		
A12	2				691095	• Pinnbult	• Stud		
A13	1				690822	• Stötstångsstyrning	• Push rod guide		
A14	1				272475	• Packning	• Gasket		
A15	1				273280	• Topplöckspackning	• Cylinder head gasket		
A16	1				692138	• O- ring	• O- ring		
A17	1				692492	Ventilkåpa	Rocker cover		
A18	4				691108	Skruv	Screw		
A19	1				692137	• Packning	• Gasket		
A20	1				697361	Insugningsrör	Intake manifold		
A21	2				691148	Skruv	Screw		
A22	1				697394	Stötstång (insug)	Push rod (intake)		
A22	1				697395	Stötstång (utblås)	Push rod (exhaust)		
A23	2				690564	Ventillyftare	Valve tappet		
A24	8				690360	Skruv	Screw		

A

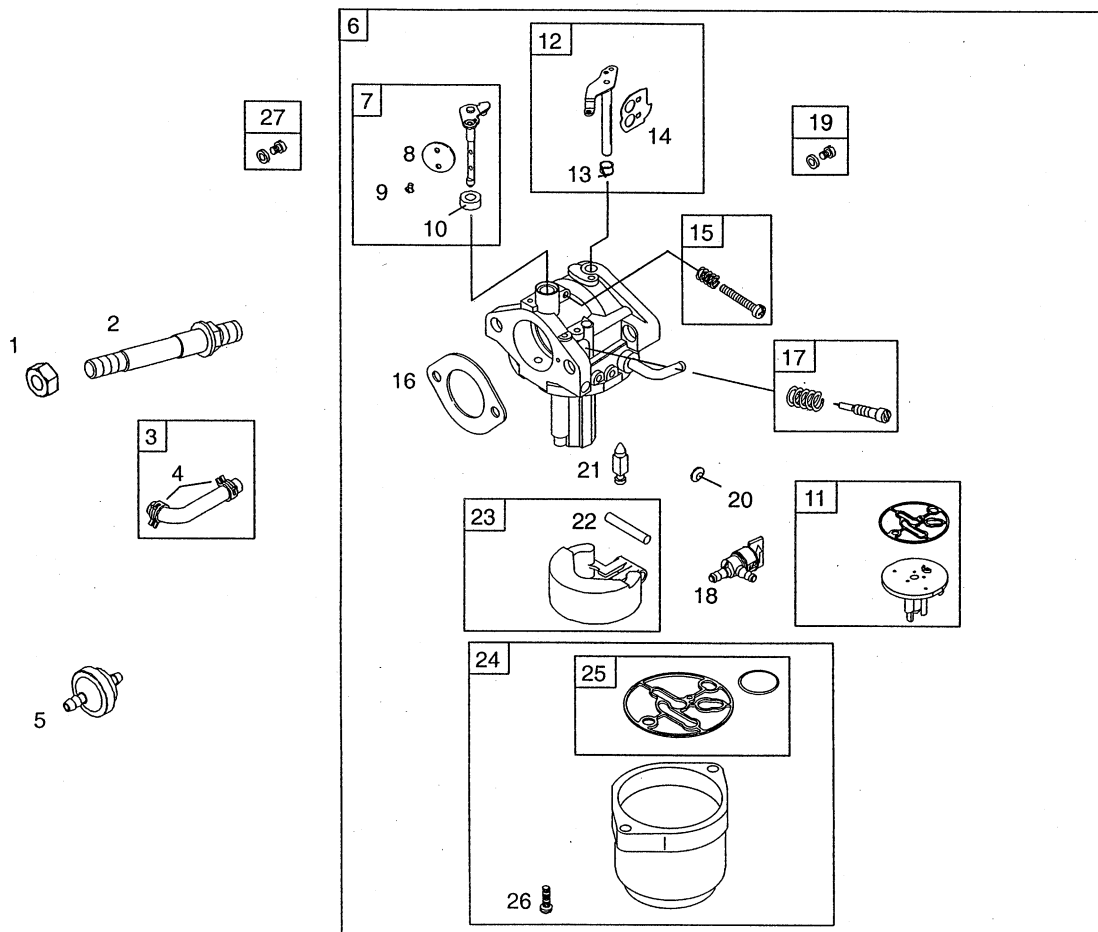


Utgåva Issue		Bildnr Picture No		BRIGGS & STRATTON 21A907 REGULATOR (A) FLÄKTHUS (A)		BRIGGS & STRATTON 21A907 GOVERNOR (A) BLOWER HOUSING (A)		Sida Page	
2004- 13		1693						200	
Pos. Fig.	Antal/Quantity				Art nr Part No	Benämning	Description	Sats Kit	Anmärkning Notes
	21A 907- 0146								
A01	2				691693	Skruv	Screw		
A02	1				694042	Reglageplåt.....	Control bracket		
A03	1				691024	Klämma	Clamp.....		
A04	1				690804	Skruv	Screw		
A05	1				692208	Fjäder.....	Spring		
A06	1				691374	Regulatorarm.....	Governor lever		
A07	1				691119	• Bult	• Bolt		
A08	1				691251	• Mutter.....	• Nut		
A09	1				696457	Generator.....	Alternator		
A10	4				691183	Skruv	Screw		
A11	1				393537	• Anslutning	• Connector		
A12	1				698516	• Skruv/bricka	• Screw/washer kit.....		
A13	2				691061	Skruv	Screw		
A14	1				492341	Tändsystem	Armature magneto		
A15	1				493880	• Anslutningshylsa	• Terminal		
A16	1				694123	Kabelklämma	Wire clip.....		
A17	1				697089	Kabel	Stop wire.....		
A18	1				697088	Skruv	Screw		
A19	1				691188	Regulator.....	Regulator		
A20	1				691841	Regulatorlänk	Governor link		
A21	1				691842	Fjäder.....	Spring		
A22	1				691840	Chokelänk.....	Choke link		
A24	2				691003	Skruv	Screw		
A25	1				697352	Skydd	Guard		
A26	1				398808	Kortslutningskabel.....	Ground wire		
A27	1				691972	Isolator	Insulator.....		
A28	4				697897	Skruv	Screw		
A29	1				697133	Roterande skydd.....	Rotating screen		
A30	2				697102	Skruv	Screw		
A31	2				690372	Skruv	Screw		
A32	1				699044	Fläkt.....	Fan		
A33	1				698282	Svänghjul.....	Flywheel		
A34	1				19203	Avdragare	Puller		
A35	1				697122	Insugningsrör	Intake elbow.....		
A36	1				691917	• O- ring.....	• O- ring		
A37	1				697123	• O- ring.....	• O- ring		
A38	1				698368	Platta	Trim plate.....		
A39	1				697870	Fläkthus	Blower housing		
A40	1				697420	• Lock.....	• Cover.....		
A41	1				697419	• Spärr.....	• Latch.....		
A42	1				698413	• Luftfilter.....	• Air cleaner filter.....		
A43	1				697103	Skruv	Screw		
A44	1				697292	• Förfilter	• Precleaner filter.....		
A45	1				697155	• Hållare	• Retainer.....		
A46	1				691612	Mutter.....	Nut		
A47	1				691077	Bricka	Washer.....		
A48	1				691084	Anslutningsbleck	Ground terminal		

A



Utgåva Issue 2004- 13		Bildnr Picture No 1684		BRIGGS & STRATTON 21A907 STARTMOTOR (A) PACKNINGSSATS (A)		BRIGGS & STRATTON 21A907 STARTER MOTOR (A) GASKET SET (A)		Sida Page 202	
Pos. Fig.	Antal/Quantity				Art nr Part No	Benämning	Description	Sats Kit	Anmärkning Notes
	21A 907- 0146								
A01	1				693551	Startmotor kpl	Starter motor assy		
A02	1				693699	• Startdrev	• Starter drive		
A03	1				691265	• Låsring	• Retaining ring		
A04	1				693713	• Drev	• Pinion gear		
A05	1				692024	• Koppling	• Drive clutch		
A06	1				691283	• Lock	• Drive cap		
A07	1				692034	• Rotor	• Armature		
A08	1				693757	• Startmotorhus	• Starter housing		
A09	1				691029	• Mutter	• Nut		
A10	1				691261	• Bricka	• Washer		
A11	1				691293	• Borsthållare	• Brush retainer		
A12	1				693167	• Mutter	• Nut		
A13	1				497608	• Släpksats	• Brush set		
A14	2				690323	• Bult	• Bolt		
A15	1				691286	• Botten	• End cap		
A16	1				691532	• Stag	• Strap		
A17	1				691224	Kabelklämma	Wire clip		
A18	1				690372	Skruv	Screw		
A19	1				691581	Packningssats- ventil	Gasket set- valve		
A20	1				273280	• Topplöckspackning	• Cylinder head gasket		
A21	1				692137	• Packning	• Gasket		
A22	1				690968	• Ventiltätning	• Valve seal		
A23	1				272475	• Packning	• Gasket		
A24	1				697151	Packningssats- motor	Gasket set- engine		
A25	1				391086	• Tätningsring	• Seal		
A26	1				697109	• Packning	• Gasket		
A27	1				692407	• Tätning	• Seal		
A28	1				690947	• Tätningsring	• Oil seal		
A29	1				691917	• O- ring	• O- ring		
A30	1				697123	• O- ring	• O- ring		
A31	1				691032	• Tätning	• Tube seal		
A32	1				691031	• O- ring	• O- ring		
A33	1				692138	• O- ring	• O- ring		
A34	1				697110	• Packning	• Gasket		



28 CARBURETOR OVERHAUL KIT				
16	30	29	20	
9		13		25
22	31	10		
21				

Utgåva Issue 2004- 13		Bildnr Picture No 1694		BRIGGS & STRATTON 21A907 FÖRGASARE (A) PACKNINGSSATS (A)		BRIGGS & STRATTON 21A907 CARBURETTOR (A) GASKET SET (A)		Sida Page 204	
Pos. Fig.	Antal/Quantity				Art nr Part No	Benämning	Description	Sats Kit	Anmärkning Notes
	21A 907- 0146								
A01	2				690958	Mutter.....	Nut		Standard
A02	2				690227	Pinnbult	Stud		
A03	1				697098	Bränsleslang	Fuel line.....		
A04	2				95162	• Slangklämma.....	• Hose clamp		
A05	1				394358	Bränslefilter	Fuelfilter		
A06	1				699896	Förgasare kpl	Carburettor assy		
A07	1				698776	• Spjällaxel	• Throttle shaft.....		
A08	1				698774	•• Gasspjäll	•• Throttle valve.....		
A09	2				690718	•• Skruv	•• Screw		
A10	1				698777	•• Tätning.....	•• Seal		
A11	1				698780	• Rör	• Transfer tube		
A12	1				698778	• Chokeyaxel	• Choke shaft		
A13	1				698779	•• Fjäder/tätning.....	•• Spring/seal		
A14	1				698773	•• Chokespjäll	•• Choke valve		
A15	1				695408	• Tomgångsskruv	• Idle speed kit		
A16	1				692137	• Packning.....	• Gasket		
A17	1				695425	• Justerskruv.....	• Idle mixture kit		
A18	1				698183	• Bränslekran.....	• Fuel shut- off valve		
A19	1				699897	• Huvudmunstycke	• Main jet		
A20	1				690727	• Expansionsplugg	• Welch plug		
A21	1				696136	• Nålventil.....	• Needle valve		
A22	1				694918	•• Flottöraxel	•• Float hinge pin.....		
A23	1				694914	• Flottör.....	• Float		
A24	1				698783	• Flottörhus	• Float bowl.....		
A25	1				698781	•• Packning	•• Gasket		
A26	2				695407	•• Skruv	•• Screw		
A27	1				699898	Huvudmunstycke	Main jet		
A28	1				698787	Rep.sats- förgasare.....	Overhaul kit- carbur		
A29	1				692138	• O- ring.....	• O- ring		
A30	1				691917	• O- ring.....	• O- ring		
A31	1				697123	• O- ring.....	• O- ring		
									High altitude