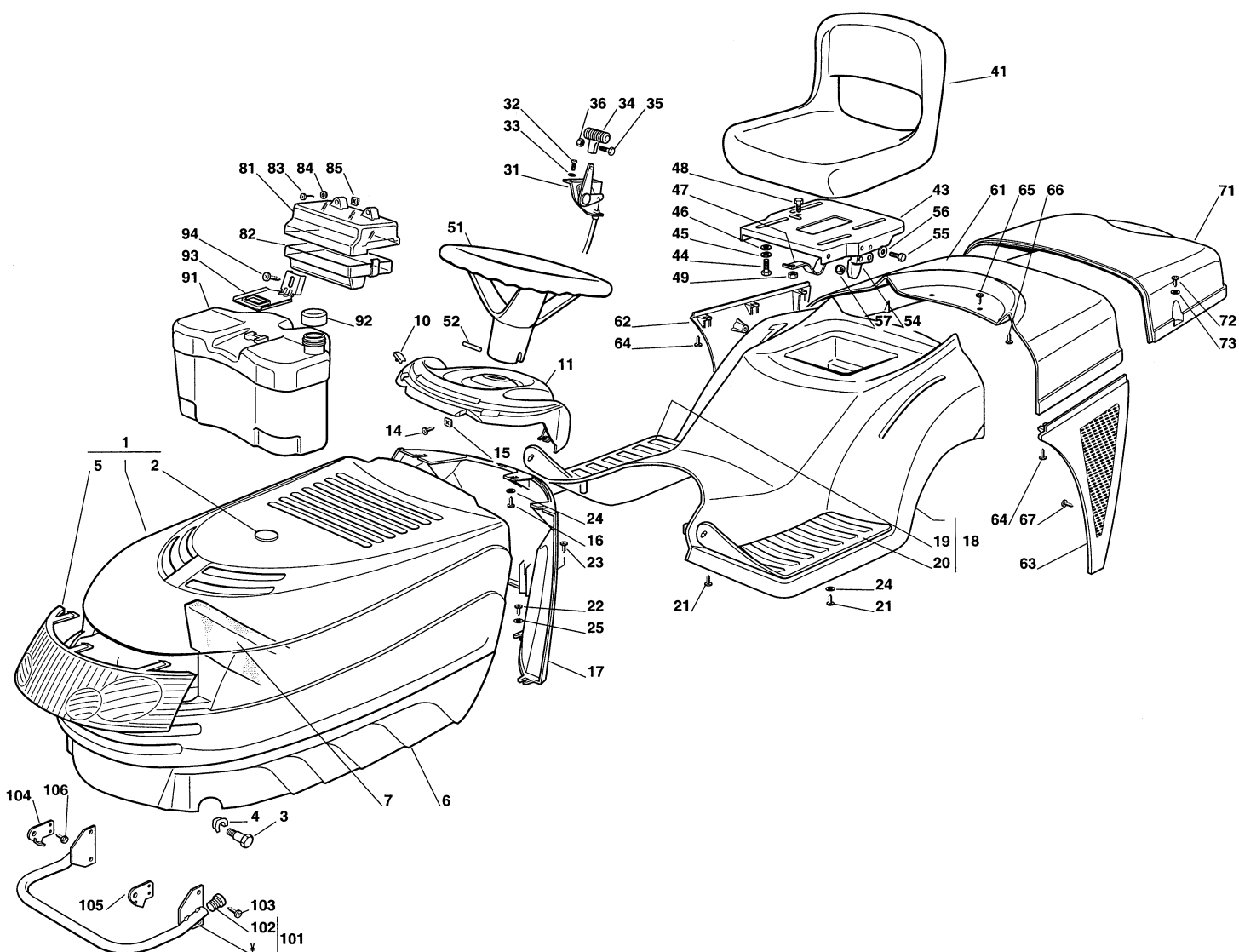


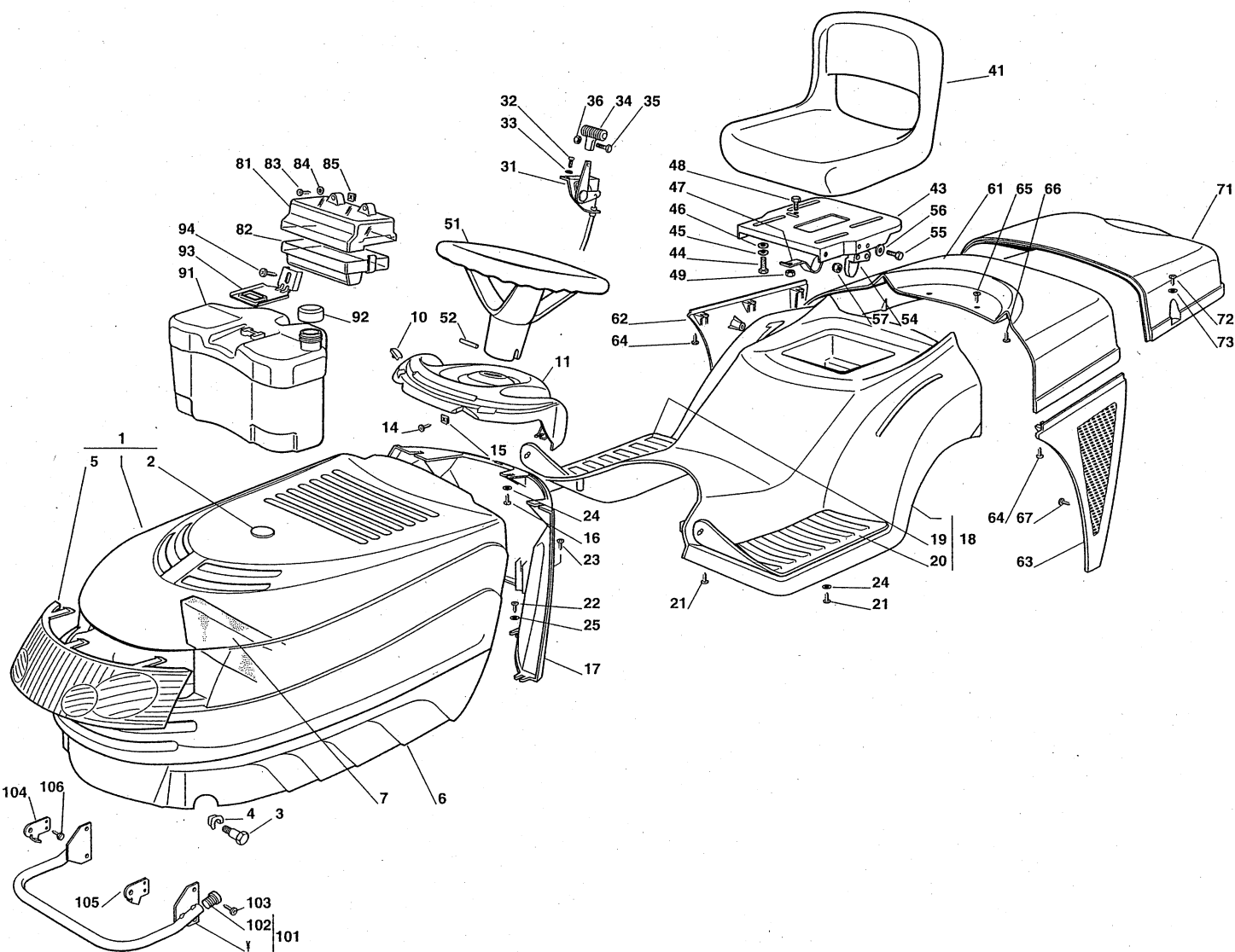
# Genuine Spare Parts

---

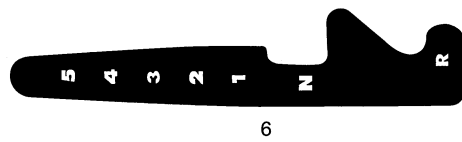




Utgåva Issue  2004- 13		Bildnr Picture No  1212C		ESTATE SENATOR ESTATE PRESIDENT KAROSS		ESTATE SENATOR ESTATE PRESIDENT BODY WORK		Sida Page  60	
Pos. Fig.	Antal/Quantity				Art nr Part No	Benämning	Description	Sats Kit	Anmärkning Notes
	2531	2532							
1	1	1			1136- 1038- 01	Motorhuv.....	Engine hood.....		Inkl. pos 2, 5
2	1	1			1136- 0905- 01	• Platta.....	• Plate.....		
3	2	2			1136- 0230- 01	Bult.....	Bolt.....		Inkl. pos 19, 20 Inkl. pos 19, 20
4	2	2			1136- 0009- 01	Låsplatta.....	Lock plate.....		
5	1	1			1136- 0888- 01	• Grill.....	• Grill.....		
6	1	1			1136- 0866- 01	Motorhuv- nedre.....	Engine hood- lower.....		
7	1	1			1136- 0923- 01	Avskiljare.....	Intake separator.....		
10	2	2			1136- 0179- 01	Huvskydd.....	Grommet.....		
11	1	1			1136- 0871- 01	Instrumentbräda.....	Dashboard.....		
14	2	2			9848- 8013- 16	Skruv.....	Screw.....		
15	2	2			1136- 0010- 01	Låsplatta.....	Lock plate.....		
16	3	3			9836- 9618- 12	Skruv.....	Screw.....		
17	1	1			1136- 0926- 01	Stöd.....	Support.....		
18	1				1136- 0475- 01	Hjulkåpa.....	Wheel cover.....		
18		1			1136- 0476- 01	Hjulkåpa.....	Wheel cover.....		
19	1	1			1136- 0148- 01	• Fotstegsskydd- hö.....	• Footboard cover- RH.....		
20	1	1			1136- 0147- 01	• Fotstegsskydd- vä.....	• Footboard cover- LH.....		
21	6	6			9836- 9635- 12	Skruv.....	Screw.....		
22	4	4			9836- 9618- 12	Skruv.....	Screw.....		
23	1	1			9836- 9525- 12	Skruv.....	Screw.....		
24	5	5			9699- 0060- 02	Planbricka.....	Flat washer.....		
25	4	4			9699- 0085- 02	Planbricka.....	Flat washer.....		
31	1	1			1136- 0440- 01	Gasreglage.....	Throttle control.....		
32	2	2			9997- 0412- 16	Skruv.....	Screw.....		
33	2	2			9683- 0010- 02	Bricka.....	Washer.....		
34	1	1			1136- 0192- 01	Knopp.....	Handle.....		
35	1	1			9865- 0412- 16	Skruv.....	Screw.....		
36	1	1			9799- 0431- 02	Mutter.....	Nut.....		
41	1	1			1136- 0315- 01	Sits.....	Seat.....		
43	1	1			1136- 0252- 01	Sitsplatta.....	Seat plate.....		
44	4	4			9997- 0820- 16	• Skruv.....	• Screw.....		
45	4	4			9683- 0030- 02	• Låsbricka.....	• Lock washer.....		
46	4	4			9699- 0056- 02	• Planbricka.....	• Flat washer.....		
47	1	1			1136- 0891- 01	Fjäder.....	Spring.....		
48	1	1			9997- 0512- 16	Skruv.....	Screw.....		
49	1	1			9747- 0531- 02	Mutter.....	Nut.....		
51	1	1			1136- 0360- 01	Ratt.....	Steering wheel.....		
52	1	1			9595- 0272- 00	• Stift.....	• Pin.....		
54	1	1			1136- 0942- 01	Kam.....	Cam.....		
55	2	2			1136- 0820- 01	Skruv.....	Screw.....		
56	2	2			9699- 0018- 02	Bricka.....	Washer.....		
57	2	2			9747- 0531- 02	Mutter.....	Nut.....		
61	1	1			1136- 0143- 01	Lock.....	Cover.....		
62	1	1			1136- 0277- 01	Skydd- hö.....	Guard- RH.....		
63	1	1			1136- 0278- 01	Skydd- vä.....	Guard- LH.....		
64	6	6			9836- 9618- 12	Skruv.....	Screw.....		
65	2	2			9847- 8216- 16	Skruv.....	Screw.....		
66	3	3			9836- 9618- 12	Skruv.....	Screw.....		
67	6	6			9836- 9618- 12	Skruv.....	Screw.....		
71	1	1			1136- 0142- 01	Uppsamlarlock.....	Grass catcher cover.....		
72	4	4			9847- 8116- 16	Skruv.....	Screw.....		
73	4	4			9699- 0035- 02	Planbricka.....	Flat washer.....		
81	1	1			1136- 0275- 01	Skydd- övre.....	Guard- upper.....		
82	1	1			1136- 0276- 01	Skydd- nedre.....	Guard- lower.....		
83	2	2			9847- 8038- 16	Skruv.....	Screw.....		
84	2	2			9699- 0024- 02	Planbricka.....	Flat washer.....		
85	2	2			1136- 0010- 01	Låsplatta.....	Lock plate.....		
91	1	1			1136- 0318- 01	Bränsletank.....	Fuel tank.....		
92	1	1			1136- 0344- 01	Tanklock.....	Tank cap.....		
93	1	1			1136- 0327- 01	Tankfäste.....	Tank support.....		
94	1	1			9848- 8013- 16	Skruv.....	Screw.....		
99	1	1			1136- 1238- 01	Tillbehörspåse.....	Key outfit.....		
101	1	1			1136- 0553- 01	Ljuddämparskydd.....	Muffler protection.....		
									Inkl. pos 44 - 46, 52 Inkl. pos 102



Utgåva Issue 2004- 13		Bildnr Picture No 1212C		ESTATE SENATOR ESTATE PRESIDENT KAROSS		ESTATE SENATOR ESTATE PRESIDENT BODY WORK		Sida Page 62	
Pos. Fig.	Antal/Quantity				Art nr Part No	Benämning	Description	Sats Kit	Anmärkning Notes
	2531	2532							
102	2	2			1136-0061-01	• Plugg .....	• Cap.....		
103	4	4			9847-8216- 16	Skruv .....	Screw .....		
104	1	1			1136-0259-01	Huvfäste- hö .....	Hood plate- RH.....		
105	1	1			1136-0260-01	Huvfäste- vä.....	Hood plate- LH .....		
106	4	4			9847-8009- 16	Skruv .....	Screw .....		



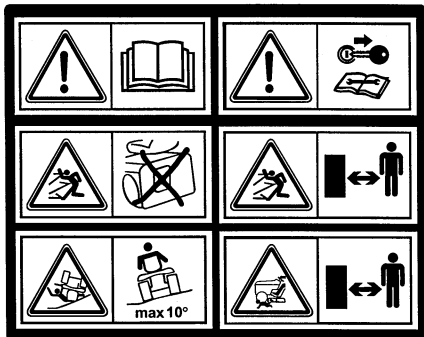
6



7



12



1



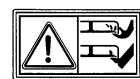
8



2



9



10



3

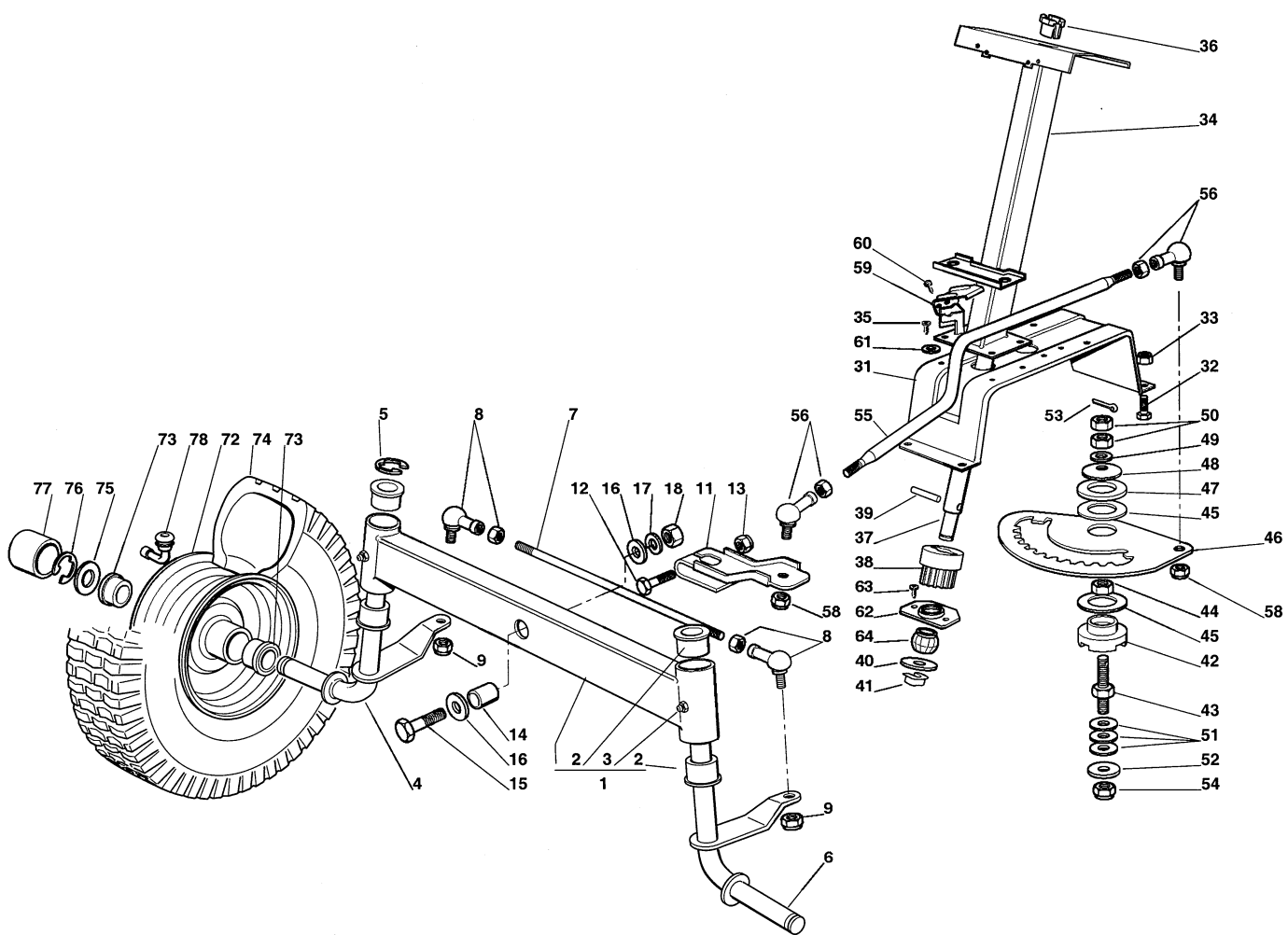


5

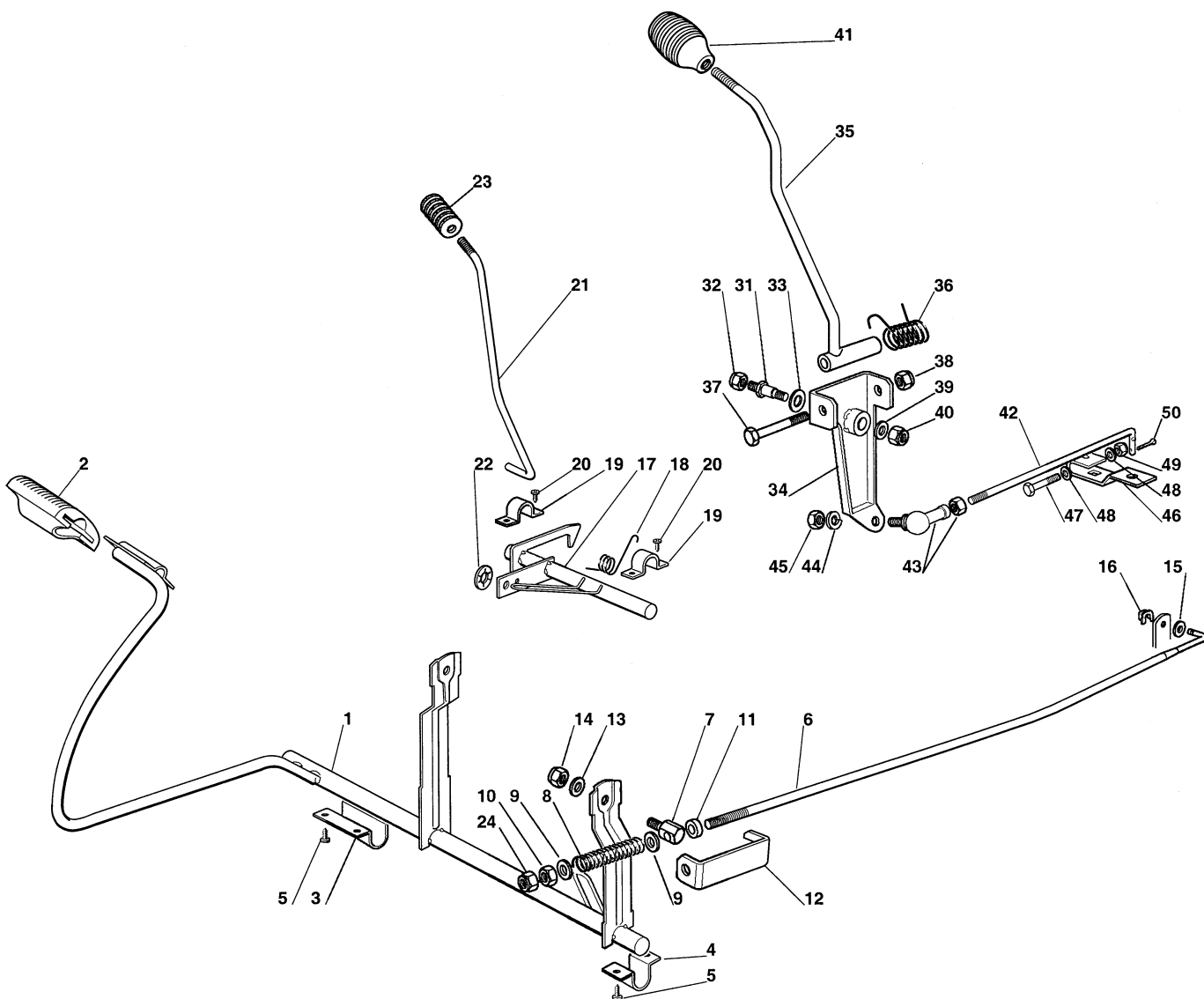
Utgåva Issue 2004- 13		Bildnr Picture No 1208B		ESTATE SENATOR ESTATE PRESIDENT DEKALER		ESTATE SENATOR ESTATE PRESIDENT LABELS		Sida Page 64	
Pos. Fig.	Antal/Quantity				Art nr Part No	Benämning	Description	Sats Kit	Anmärkning Notes
	2531	2532							
1	1	1			1136-0025-01	Dekal .....	Label .....		Ej ill/not ill. Ej ill/not ill. Ø 55 mm 140 x 33 mm
2	1	1			1136-0026-01	Dekal .....	Label .....		
3	1	1			1136-0020-01	Dekal .....	Label .....		
5	1	1			1136-0031-01	Dekal .....	Label .....		
6	1				1136-0027-01	Dekal .....	Label .....		
7	1	1			1136-0028-01	Dekal .....	Label .....		
8	1	1			1136-0029-01	Dekal .....	Label .....		
9		1			1136-0030-01	Dekal .....	Label .....		
10	2	2			1136-0021-01	Dekal .....	Label .....		
12	1	1			1136-1217-01	Dekal .....	Label .....		
99	1				1136-1445-01	Dekal "Senator" .....	Label "Senator" .....		
99		1			1136-1446-01	Dekal "President" .....	Label "President" .....		
99	1	1			1136-1451-01	Dekal "STIGA" .....	Label "STIGA" .....		
99	3	3			1136-1453-01	Dekal "STIGA" .....	Label "STIGA" .....		



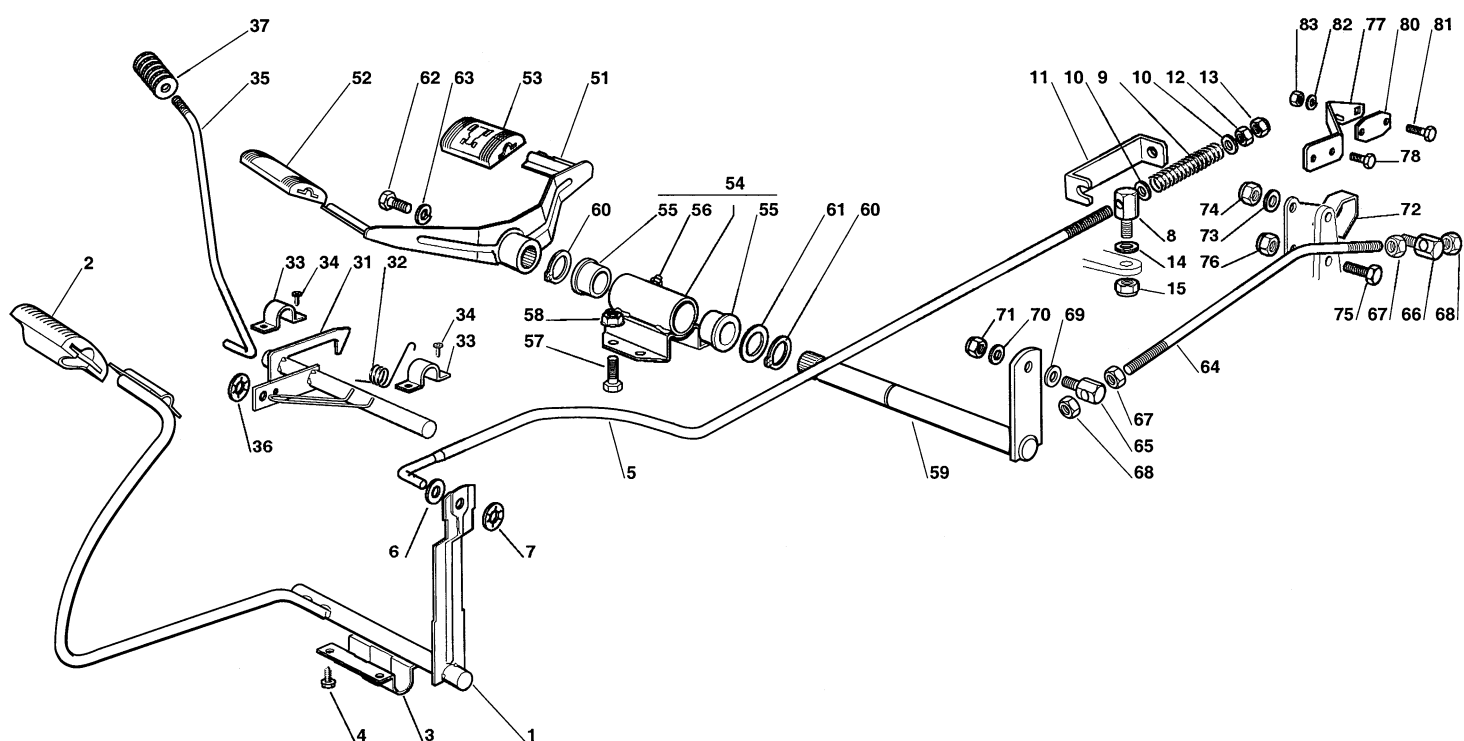
Utgåva Issue 2004- 13		Bildnr Picture No 1211C		ESTATE SENATOR ESTATE PRESIDENT CHASSI		ESTATE SENATOR ESTATE PRESIDENT CHASSIS		Sida Page 66	
Pos. Fig.	Antal/Quantity				Art nr Part No	Benämning	Description	Sats Kit	Anmärkning Notes
	2531	2532							
1	1	1			1136-1499-01	Ram.....	Frame.....		
3	1	1			1136-0548-01	Fotstegsstöd- hö.....	Footboard support- RH.....		
4	1	1			1136-0549-01	Fotstegsstöd- vä.....	Footboard support- LH.....		
5	4	4			9898-0645-12	Skruv.....	Screw.....		
6	4	4			9699-0060-02	Planbricka.....	Flat washer.....		
7	4	4			9747-0631-02	Låsmutter.....	Lock nut.....		
21		1			1136-0267-01	Remstyrning.....	Belt guide.....		
22		2			9739-0631-22	Mutter.....	Nut.....		
23	2	2			1136-0261-01	Platta.....	Plate.....		
24	2	2			9997-0820-16	Skruv.....	Screw.....		
25	2	2			9747-0831-02	Mutter.....	Lock nut.....		
26	2				1136-0907-01	Remstyrning.....	Belt guide.....		
27	2				1136-0004-01	Fyrkantmutter.....	Square nut.....		
28	1	1			1136-1236-01	Remstyrning.....	Belt guide.....		
29	2	2			1136-1247-01	Platta.....	Plate.....		
30	2	2			9847-8216-16	Skruv.....	Screw.....		
31	2	2			9699-0060-02	Planbricka.....	Flat washer.....		
32	1	1			1136-1281-01	Justerstång.....	Tie rod.....		
33	1	1			1136-0047-01	Gaffel.....	Fork.....		
34	1	1			9799-0631-02	Mutter.....	Nut.....		
35	1	1			1136-0042-01	Låsbult.....	Clip bolt.....		
36	1	1			9997-0820-16	Skruv.....	Screw.....		
37	1	1			9739-0831-22	Mutter.....	Nut.....		
41	1	1			1136-0515-01	Plåt- bak.....	Plate- rear.....		
42	2	2			9997-0816-16	Skruv.....	Screw.....		
43	1	1			1136-0525-01	Förstärkningsstag- hö.....	Reinforcement plate- R.....		
44	1	1			1136-0300-01	Förstärkningsstag- vä.....	Reinforcement plate- L.....		
45	4	4			9997-0816-16	Skruv.....	Screw.....		
46	1	1			9677-0009-02	Låsbricka.....	Lock washer.....		
47	6	6			9739-0831-22	Mutter.....	Nut.....		
48	1	1			1136-0082-01	Lock.....	Cap.....		
61	1	1			1136-0337-01	Sitsfäste.....	Seat support.....		
62	2	2			1136-0301-01	Förstärkningsstag.....	Reinforcement plate.....		
63	4	4			9997-0614-16	Skruv.....	Screw.....		
64	4	4			9739-0631-22	Mutter.....	Nut.....		
65	4	4			9997-0614-16	Skruv.....	Screw.....		
67	4	4			9739-0631-22	Mutter.....	Nut.....		
68	1	1			1136-0302-01	Förstärkningsstag.....	Reinforcement plate.....		
69	2	2			9699-0056-02	Planbricka.....	Flat washer.....		
70	2	2			1136-0202-01	Fjäder.....	Spring.....		
71	2	2			9699-0090-02	Planbricka.....	Flat washer.....		
72	2	2			9739-0831-22	Mutter.....	Nut.....		
73	2	2			1136-0358-01	Skruv.....	Screw.....		
74	2	2			1136-0003-01	Fyrkantmutter.....	Square nut.....		
75	2	2			1136-0156-01	Lock.....	Cap.....		
76	2	2			1136-0321-01	Vinkelfäste.....	Bracket.....		
77	2	2			9997-0816-16	Skruv.....	Screw.....		
78	2	2			9739-0831-22	Mutter.....	Nut.....		
79	2	2			1136-0086-01	Bult.....	Bolt.....		
80	2	2			9712-0831-02	Låsmutter.....	Lock nut.....		
81	1	1			1136-0322-01	Vinkelfäste.....	Bracket.....		
82	2	2			9997-0512-16	Skruv.....	Screw.....		
83	2	2			9747-0531-02	Mutter.....	Nut.....		
84	1	1			1136-0925-01	Vinkelfäste.....	Angle bracket.....		
85	2	2			9847-8009-16	Skruv.....	Screw.....		
91	1	1			1136-0333-01	Stöd.....	Support.....		
92	2	2			9997-0614-16	Skruv.....	Screw.....		
93	2	2			9739-0631-22	Mutter.....	Nut.....		
94	2	2			9997-0614-16	Skruv.....	Screw.....		
95	2	2			9739-0631-22	Mutter.....	Nut.....		



Utgåva Issue  2004- 13		Bildnr Picture No  1213B		ESTATE SENATOR ESTATE PRESIDENT STYRNING		ESTATE SENATOR ESTATE PRESIDENT STEERING		Sida Page  68	
Pos. Fig.	Antal/Quantity				Art nr Part No	Benämning	Description	Sats Kit	Anmärkning Notes
	2531	2532							
1	1	1			1136-0466-01	Framaxel kpl .....	Front wheel axle assy .....		Inkl. pos 2, 3
2	4	4			1136-0121-01	• Bussning .....	• Bushing .....		
3	2	2			9501-0500-00	• Smörjnippel .....	• Grease joint .....		
4	1	1			1136-0485-01	Hjulspindel- hö .....	Stub axle- RH .....		
5	1	1			9652-0015-04	Låsring .....	Retaining ring .....		
6	1	1			1136-0486-01	Hjulspindel- vå .....	Stub axle- LH .....		
7	1	1			1136-0349-01	Parallellstag .....	Tie rod .....		
8	2	2			1136-0092-01	Kulled .....	Ball joint .....		
9	2	2			9747-1031-02	Låsmutter .....	Lock nut .....		
11	1	1			1136-0188-01	Styrarm .....	Steering arm .....		
12	1	1			9997-1055-12	Skruv .....	Screw .....		
13	1	1			9747-1031-02	Låsmutter .....	Lock nut .....		
14	1	1			1136-0165-01	Distans .....	Spacer .....		
15	1	1			9997-1260-02	Skruv .....	Screw .....		
16	2	2			1136-0016-01	Bricka .....	Washer .....		
17	1	1			9683-0055-02	Låsbricka .....	Lock washer .....		
18	1	1			9799-1231-02	Mutter .....	Nut .....		
31	1	1			1136-0335-01	Stöd .....	Support .....		
32	4	4			9997-0816-16	Skruv .....	Screw .....		
33	4	4			9747-0831-02	Mutter .....	Lock nut .....		
34	1	1			1136-1496-01	Fäste .....	Support .....		
35	4	4			9847-8216-16	Skruv .....	Screw .....		
36	1	1			1136-1469-01	Bussning .....	Bushing .....		
37	1	1			1136-1471-01	Rattstång .....	Steering column .....		
38	1	1			1136-0263-01	Styrdrev .....	Steering pinion .....		
39	1	1			9595-0262-00	Spännstift .....	Locating pin .....		
40	1	1			9699-0037-02	Bricka .....	Washer .....		
41	1	1			1136-0008-01	Låsplatta .....	Lock plate .....		
42	1	1			1136-0128-01	Bussning .....	Bushing .....		
43	1	1			1136-0246-01	Pinnbult .....	Stud bolt .....		
44	1	1			9799-1031-02	Mutter .....	Nut .....		
45	2	2			1136-0310-01	Bricka .....	Washer .....		
46	1	1			1136-0320-01	Styrsektor .....	Steering sector .....		
47	1	1			1136-0311-01	Bricka .....	Washer .....		
48	1	1			1136-0083-01	Fjäderbricka .....	Elastic washer .....		
49	1	1			9699-0035-02	Planbricka .....	Flat washer .....		
50	2	2			9799-1031-02	Mutter .....	Nut .....		
51	3	3			1136-0087-01	Bricka .....	Washer .....		
52	1	1			1136-0015-01	Bricka .....	Washer .....		
53	1	1			9599-0070-02	Saxsprint .....	Split pin .....		
54	1	1			9747-1031-02	Låsmutter .....	Lock nut .....		
55	1	1			1136-0111-01	Styrstag .....	Steering rod .....		
56	2	2			1136-0092-01	Kulled .....	Ball joint .....		
58	2	2			9747-1031-02	Låsmutter .....	Lock nut .....		
59		1			1136-0279-01	Brytarskydd .....	Micro protection .....		
60		2			9847-7813-16	Skruv .....	Screw .....		
61	2	2			9699-0035-02	Planbricka .....	Flat washer .....		
62	1	1			1136-1477-01	Stöd .....	Support .....		
63	2	2			9847-8116-16	Skruv .....	Screw .....		
64	1	1			1136-1473-01	Länk .....	Joint .....		
72	2	2			1136-0454-01	Fälg .....	Rim .....		
73	4	4			1136-0157-01	Lager .....	Bearing .....		
74	2	2			1136-0269-01	Däck (Turf Saver) .....	Tire (Turf Saver) .....		
74	2	2			1136-0271-01	Däck (Deli) .....	Tire (Deli) .....		
75	2	2			1136-0305-01	Bricka .....	Washer .....		
76	2	2			9652-0015-04	Låsring .....	Retaining ring .....		
77	2	2			1136-0081-01	Navkapsel .....	Hub cap .....		
78	2	2			1136-0359-01	Ventil .....	Valve .....		

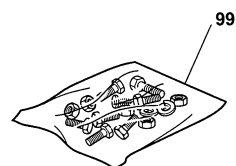
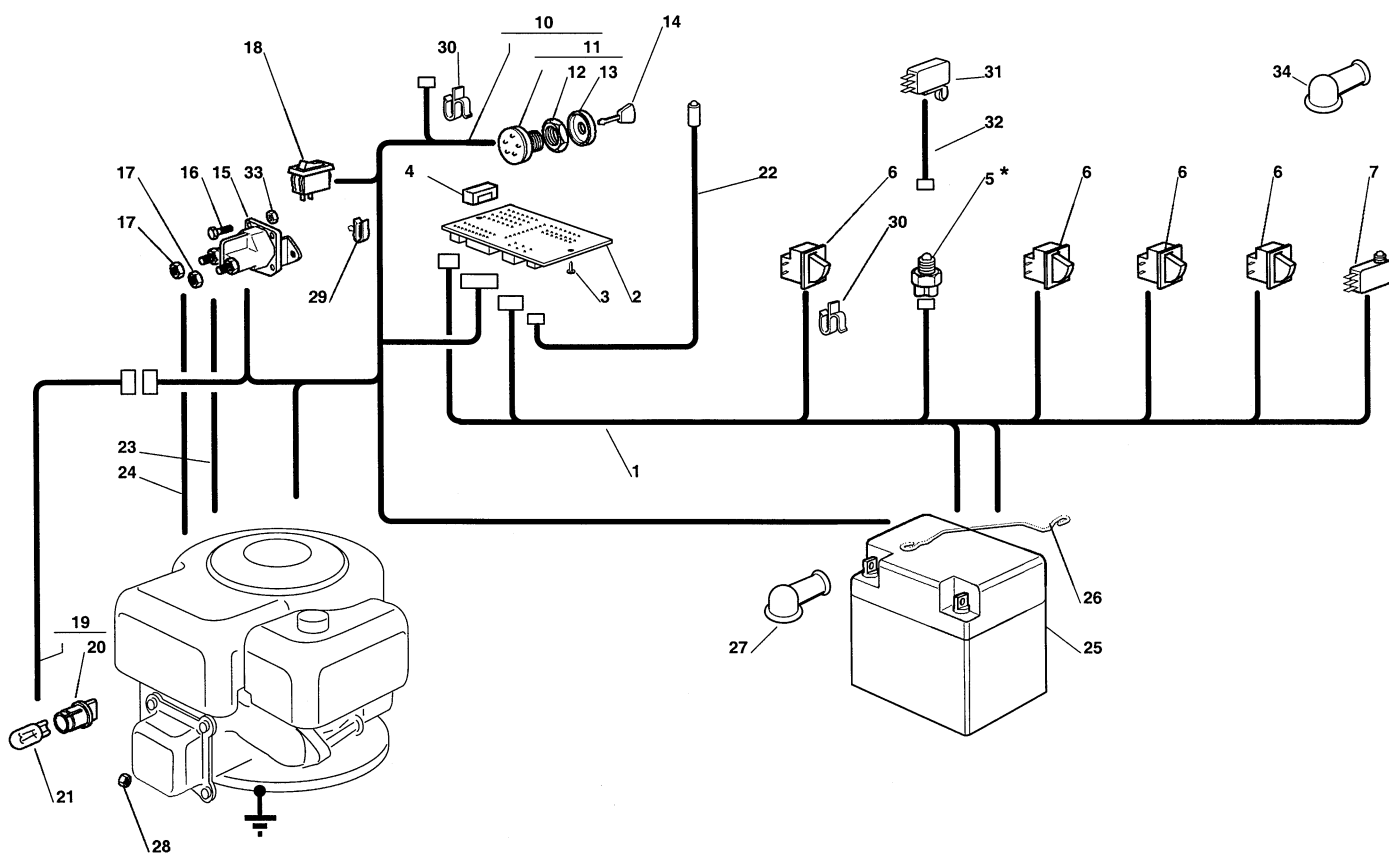


Utgåva Issue 2004- 13		Bildnr Picture No 1214A		ESTATE SENATOR BROMSREGLAGE VÄXELREGLAGE		ESTATE SENATOR BRAKE CONTROL GEAR SHIFTER CONTROL		Sida Page 70	
Pos. Fig.	Antal/Quantity				Art nr Part No	Benämning	Description	Sats Kit	Anmärkning Notes
	2531								
1	1				1136-0506-01	Bromspedal .....	Brake pedal .....		
2	1				1136-0152-01	Pedalskydd .....	Pedal cover .....		
3	1				1136-0254-01	Bygel .....	Clamp .....		
4	1				1136-0255-01	Bygel .....	Clamp .....		
5	6				9847-8016-16	Skruv .....	Screw .....		
6	1				1136-0116-01	Bromsstång .....	Brake rod .....		
7	1				1136-0244-01	Ledbult .....	Pivot bolt .....		
8	1				1136-0218-01	Fjäder .....	Spring .....		
9	2				9699-0035-02	Planbricka .....	Flat washer .....		
10	1				9799-1031-02	Mutter .....	Nut .....		
11	1				1136-0172-01	Distans .....	Spacer .....		
12	1				1136-0329-01	Bygel .....	Clamp .....		
13	1				9699-0060-02	Planbricka .....	Flat washer .....		
14	1				9747-0631-02	Låsmutter .....	Lock nut .....		
15	1				9699-0090-02	Planbricka .....	Flat washer .....		
16	1				1136-0009-01	Låsplatta .....	Lock plate .....		
17	1				1136-0441-01	Spärraxel .....	Axle .....		
18	1				1136-0217-01	Fjäder .....	Spring .....		
19	2				1136-0256-01	Bygel .....	Plate .....		
20	4				9847-8016-16	Skruv .....	Screw .....		
21	1				1136-0119-01	P- bromsarm .....	P- brake lever .....		
22	1				9675-0011-00	Starlock .....	Starlock .....		
23	1				1136-0392-01	Knopp .....	Knob .....		
24	1				9747-1031-02	Låsmutter .....	Lock nut .....		
31	1				1136-0233-01	Pinnbult .....	Stud bolt .....		
32	1				9712-0831-02	Låsmutter .....	Lock nut .....		
33	1				1136-0088-01	Bricka .....	Washer .....		
34	1				1136-0529-01	Spakhållare .....	Gear lever bracket .....		
35	1				1136-0490-01	Växelspak .....	Gear lever .....		
36	1				1136-0212-01	Fjäder .....	Spring .....		
37	1				9997-0880-16	Skruv .....	Screw .....		
38	1				9747-0831-02	Mutter .....	Lock nut .....		
39	1				9699-0056-02	Planbricka .....	Flat washer .....		
40	1				9712-0831-02	Låsmutter .....	Lock nut .....		
41	1				1136-0197-01	Handtag .....	Knob .....		
42	1				1136-0107-01	Växelstag .....	Shifter rod .....		
43	1				1136-0093-01	Kulled .....	Ball joint .....		
44	1				9683-0030-02	Låsbricka .....	Lock washer .....		
45	1				9799-0831-02	Mutter .....	Nut .....		
46	1				1136-0187-01	Växelarm .....	Gearshift arm .....		
47	1				9997-0640-12	Skruv .....	Screw .....		
48	2				9699-0035-02	Planbricka .....	Flat washer .....		
49	1				9747-0631-02	Låsmutter .....	Lock nut .....		
50	1				9599-0070-02	Saxsprint .....	Split pin .....		

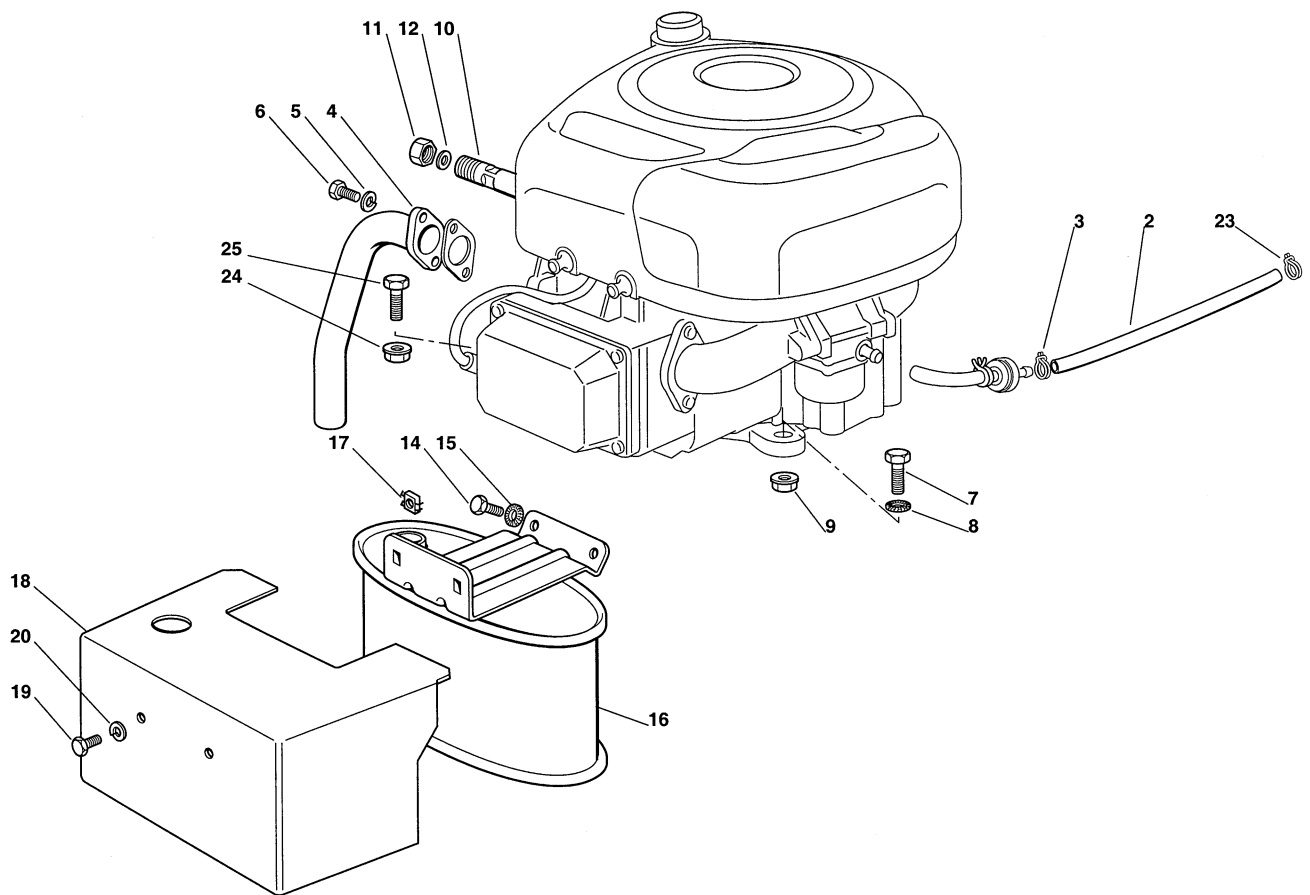


Utgåva Issue 2004- 13		Bildnr Picture No 1215A		ESTATE PRESIDENT BROMSREGLAGE DRIVREGLAGE		ESTATE PRESIDENT BRAKE CONTROL DRIVE CONTROL		Sida Page 72	
Pos. Fig.	Antal/Quantity				Art nr Part No	Benämning	Description	Sats Kit	Anmärkning Notes
	2532								
1	1				1136-0510-01	Pedal .....	Pedal .....		Inkl. pos 55 - 56
2	1				1136-0151-01	Pedalskydd .....	Pedal cover .....		
3	1				1136-0254-01	Bygel .....	Clamp .....		
4	4				9847-8016-16	Skruv .....	Screw .....		
5	1				1136-0117-01	Bromsstång .....	Brake rod .....		
6	1				9699-0090-02	Planbricka .....	Flat washer .....		
7	1				9675-0012-02	Starlock .....	Locking washer .....		
8	1				1136-0248-01	Ledbult .....	Pivot bolt .....		
9	1				1136-0218-01	Fjäder .....	Spring .....		
10	2				9699-0035-02	Planbricka .....	Flat washer .....		
11	1				1136-0329-01	Bygel .....	Clamp .....		
12	1				9799-1031-02	Mutter .....	Nut .....		
13	1				9747-1031-02	Låsmutter .....	Lock nut .....		
14	1				9699-0090-02	Planbricka .....	Flat washer .....		
15	1				9747-0831-02	Mutter .....	Lock nut .....		
31	1				1136-0441-01	Spärraxel .....	Axle .....		
32	1				1136-0217-01	Fjäder .....	Spring .....		
33	2				1136-0256-01	Bygel .....	Plate .....		
34	4				9847-8016-16	Skruv .....	Screw .....		
35	1				1136-0119-01	P- bromsarm .....	P- brake lever .....		
36	1				9675-0011-00	Starlock .....	Starlock .....		
37	1				1136-0392-01	Knopp .....	Knob .....		
51	1				1136-0507-01	Drivpedal .....	Drive pedal .....		
52	1				1136-0149-01	Pedalskydd- fram .....	Pedal cover- front .....		
53	1				1136-0150-01	Pedalskydd- bak .....	Pedal cover- rear .....		
54	1				1136-1495-01	Fäste kpl .....	Support assy .....		
55	2				1136-0121-01	• Bussning .....	• Bushing .....		
56	1				9501-0500-00	• Smörjnippel .....	• Grease joint .....		
57	2				9997-0616-16	Skruv .....	Screw .....		
58	2				9739-0631-22	Mutter .....	Nut .....		
59	1				1136-0500-01	Pedalaxel .....	Pedal axle .....		
60	2				9650-0020-04	Spärring .....	Circlip .....		
61	1				1136-0090-01	Bricka .....	Washer .....		
62	1				9997-0816-16	Skruv .....	Screw .....		
63	1				9683-0030-02	Låsbricka .....	Lock washer .....		
64	1				1136-0118-01	Stag .....	Drive rod .....		
65	1				1136-0241-01	Ledbult .....	Pivot bolt .....		
66	1				1136-0247-01	Ledbult .....	Pivot bolt .....		
67	2				9799-0831-02	Mutter .....	Nut .....		
68	2				9747-0831-02	Mutter .....	Lock nut .....		
69	1				9699-0035-02	Planbricka .....	Flat washer .....		
70	1				9699-0060-02	Planbricka .....	Flat washer .....		
71	1				9747-0631-02	Låsmutter .....	Lock nut .....		
72	1				1136-0533-01	Fäste .....	Support .....		
73	1				9699-0060-02	Planbricka .....	Flat washer .....		
74	1				9747-0631-02	Låsmutter .....	Lock nut .....		
75	1				9997-0620-16	Skruv .....	Screw .....		
76	1				9747-0631-02	Låsmutter .....	Lock nut .....		
77	1				1136-0330-01	Bygel .....	Clamp .....		
78	2				9848-8013-16	Skruv .....	Screw .....		
80	1				1136-0407-01	Plåt .....	Plate .....		
81	2				1136-1214-01	Skruv .....	Screw .....		
82	2				9683-0005-02	Låsbricka .....	Lock washer .....		
83	2				9799-0331-02	Mutter .....	Nut .....		

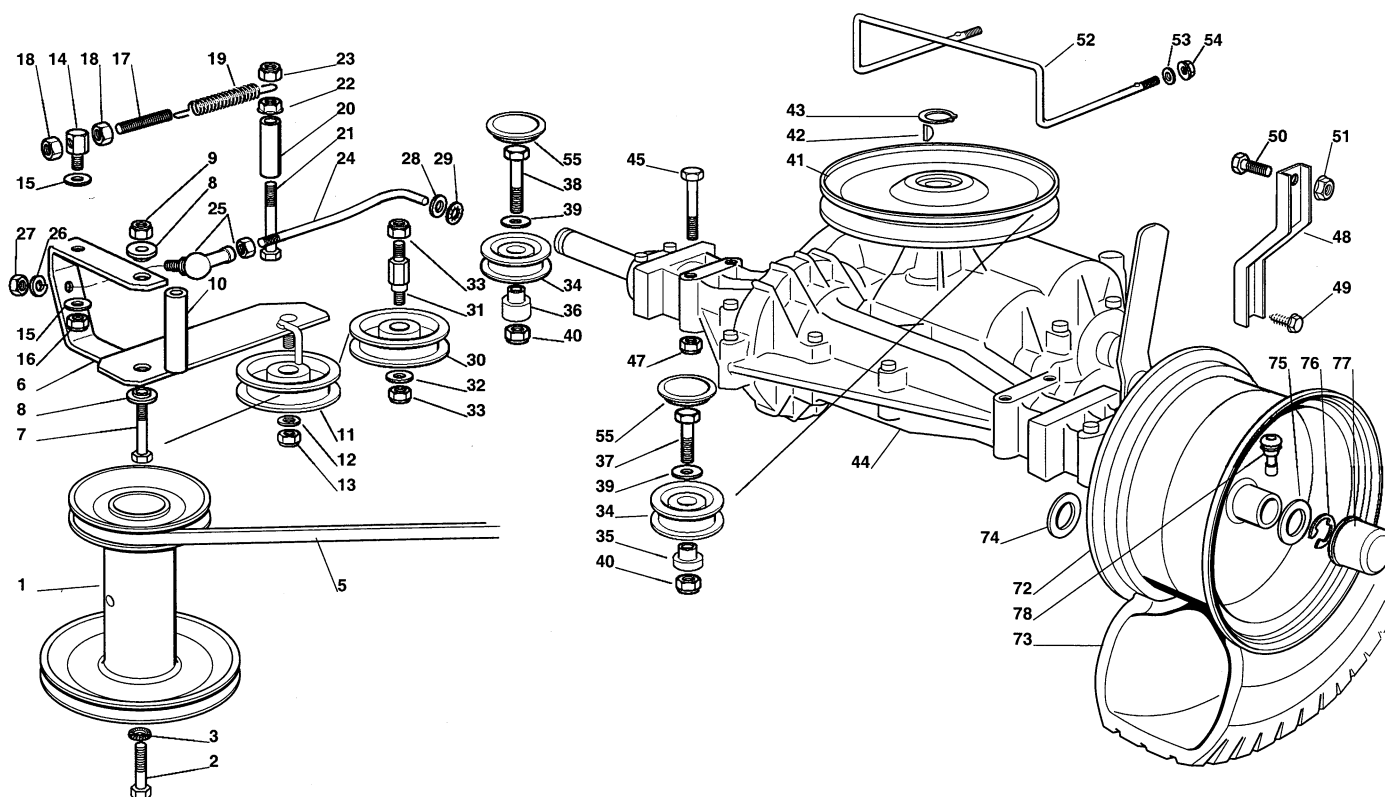
X



Utgåva Issue  2004- 13		Bildnr Picture No  1224C		ESTATE SENATOR ESTATE PRESIDENT ELUTRUSTNING		ESTATE SENATOR ESTATE PRESIDENT EL. EQUIPMENT		Sida Page  74	
Pos. Fig.	Antal/Quantity				Art nr Part No	Benämning	Description	Sats Kit	Anmärkning Notes
	2531	2532							
1	1	1			1136- 1286- 01	Kabelhärva.....	Harness.....		6.3 A Växellåda/gearbox
2	1	1			1136- 0314- 01	Elektronikkort .....	Electronic card .....		
3	2	2			9847- 7813- 16	Skruv .....	Screw .....		
4	1	1			1136- 0428- 01	• Säkring .....	• Fuse .....		
5	1				786194	Brytare.....	Neutral start switch .....		
6	4	4			1136- 0073- 01	Mikrobrytare.....	Micro switch .....		
7	1	1			1136- 0072- 01	Mikrobrytare.....	Micro switch .....		
10	1	1			1136- 0469- 01	Kabelhärva.....	Harness.....		
11	1	1			1136- 0056- 01	• Tändningslås .....	• Ignition switch .....		
12	1	1			1136- 0049- 01	• • Mutter .....	• • Nut .....		
13	1	1			1134- 4097- 01	• • Täckkåpa.....	• • Cap .....		
14	1	1			1134- 2848- 01	Tändningsnyckel.....	Ignition key .....		Full upps./grass bag Inkl. pos 11 Inkl. pos 12 - 13
15	1	1			1136- 0065- 01	Startrelä.....	Solenoid.....		
16	2	2			9997- 0620- 16	Skruv .....	Screw .....		
17	2	2			9794- 5131- 02	Mutter.....	Nut .....		
18	1	1			1136- 0055- 01	Brytare.....	Switch.....		
19	1	1			1136- 0468- 01	Kabel .....	Cable .....		
20	2	2			1136- 0429- 01	• Lamphållare .....	• Lamp holder.....		
21	2	2			1136- 0058- 01	Glödlampa .....	Bulb .....		
22	1	1			1136- 0135- 01	Kabel .....	Cable .....		
23	1	1			1136- 0134- 01	Kabel .....	Cable .....		
24	1	1			1136- 0136- 01	Kabelhärva.....	Harness.....		Strålkastare/light Inkl. pos 20
25	1	1			1134- 4804- 01	Batteri.....	Battery .....		
26	1	1			1136- 0215- 01	Fjäder.....	Spring .....		
27	1	1			1136- 0059- 01	Polskydd.....	Protection .....		
28	1	1			9795- 3531- 02	Mutter.....	Nut .....		
29	4	4			1136- 0427- 01	Kabelhållare .....	Cable holder .....		
30	1	1			1136- 0426- 01	Kabelhållare .....	Cable holder .....		
31		1			1136- 0076- 01	Mikrobrytare.....	Micro switch .....		
32		1			1136- 0865- 01	Kabel .....	Cable .....		
33	2	2			9739- 0631- 22	Mutter.....	Nut .....		
34	1	1			1136- 0060- 01	Polskydd.....	Protection .....		Inkl. pos 4, 14
99	1	1			1136- 1238- 01	Tillbehörspåse .....	Key outfit.....		



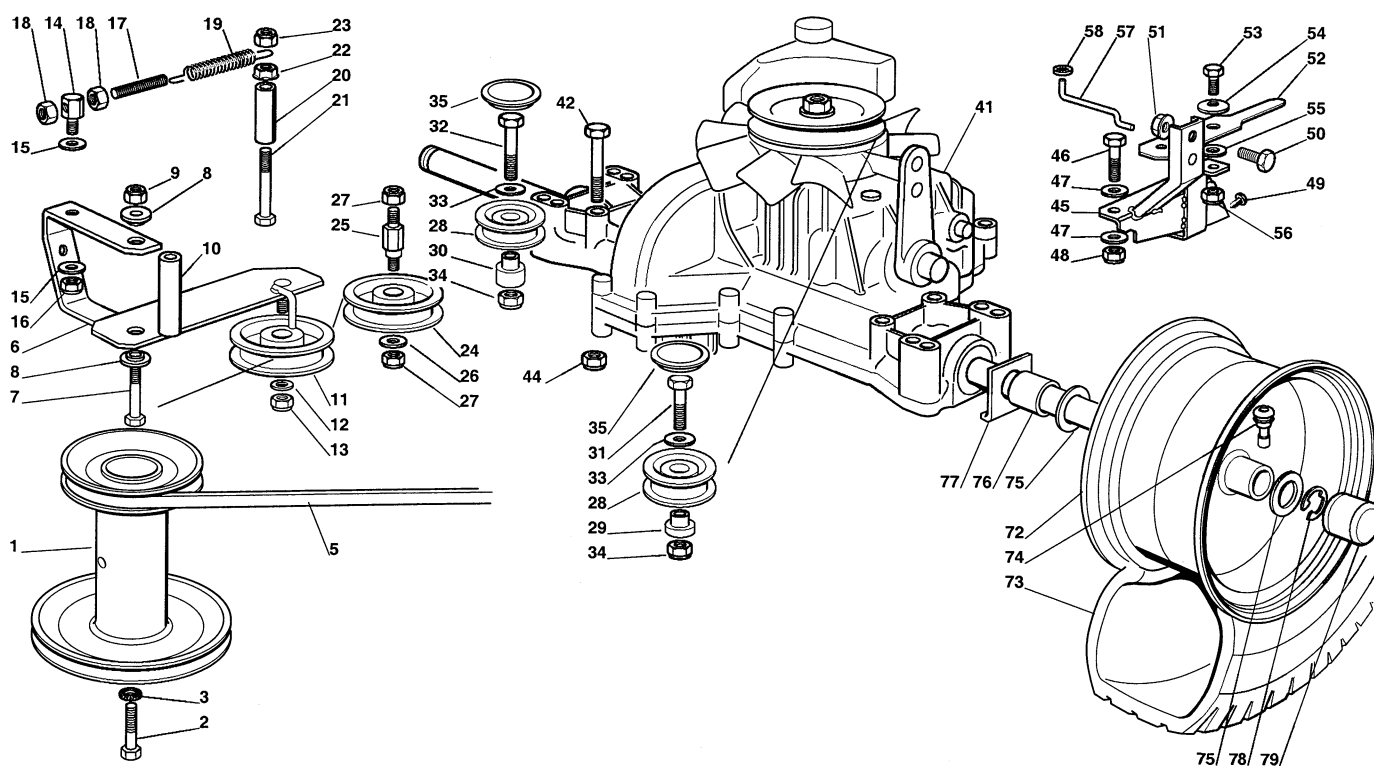
Utgåva Issue 2004- 13		Bildnr Picture No 1701		ESTATE SENATOR ESTATE PRESIDENT MOTOR		ESTATE SENATOR ESTATE PRESIDENT ENGINE		Sida Page 76	
Pos. Fig.	Antal/Quantity				Art nr Part No	Benämning	Description	Sats Kit	Anmärkning Notes
	2531 2532								
2	2				1136-0354-01	Bränsleslang .....	Fuel hose .....		L = 40 mm
3	1				1136-0045-01	Slangklämma .....	Hose clamp .....		
4	1				1136-1467-01	Avgasrör .....	Exhaust conn. tube .....		
5	2				9683-0030-02	Låsbricka .....	Lock washer .....		
6	2				9988-3619-16	Skruv .....	Screw .....		
7	1				9997-0840-16	Skruv .....	Screw .....		
8	1				9677-0009-02	Låsbricka .....	Lock washer .....		
9	1				9739-0831-22	Mutter .....	Nut .....		
10	1				1136-0273-01	Oljeavtappningsrör .....	Oil drain tube .....		
11	1				1136-0066-01	Oljeavtappningsplugg .....	Oil drain plug .....		
12	1				1136-0054-01	Tätningssring .....	Oil seal .....		
14	2				9997-0820-16	Skruv .....	Screw .....		
15	2				9677-0009-02	Låsbricka .....	Lock washer .....		
16	1				1136-1054-01	Ljuddämpare .....	Muffler .....		
17	2				1136-0004-01	Fyrkantmutter .....	Square nut .....		
18	1				1136-1048-01	Skydd .....	Guard .....		
19	2				9997-0816-16	Skruv .....	Screw .....		
20	2				9683-0030-02	Låsbricka .....	Lock washer .....		
23	1				1136-0046-01	Slangklämma .....	Hose clamp .....		
24	3				9739-0831-22	Mutter .....	Nut .....		
25	3				9997-0835-12	Skruv .....	Screw .....		L = 35 mm



Utgåva Issue		Bildnr Picture No		ESTATE SENATOR TRANSMISSION		ESTATE SENATOR TRANSMISSION		Sida Page	
2004- 13		1217						78	
Pos. Fig.	Antal/Quantity				Art nr Part No	Benämning	Description	Sats Kit	Anmärkning Notes
	2531								
1	1				1136-0286-01	Motorremskiva .....	Engine belt pulley .....		
2	1				9987-5351-12	Skruv .....	Screw .....		
3	1				9683-0045-02	Bricka .....	Washer .....		
5	1				1136-0433-01	Kilrem .....	V-belt .....		
6	1				1136-0489-01	Spännarm .....	Tension arm .....		
7	1				9997-0630-12	Skruv .....	Screw .....		
8	2				1136-0123-01	Bussning .....	Bushing .....		
9	1				9747-0831-02	Mutter .....	Lock nut .....		
10	1				1136-0166-01	Distans .....	Spacer .....		
11	1				1136-0289-01	Spännrulle .....	Idler pulley .....		
12	1				9699-0056-02	Planbricka .....	Flat washer .....		
13	1				9747-0831-02	Mutter .....	Lock nut .....		
14	1				1136-0235-01	Ledbult .....	Pivot bolt .....		
15	2				1136-0309-01	Bricka .....	Washer .....		
16	1				9747-0831-02	Mutter .....	Lock nut .....		
17	1				1136-0348-01	Spännstång .....	Tie rod .....		
18	2				9799-0831-02	Mutter .....	Nut .....		
19	1				1136-0208-01	Fjäder .....	Spring .....		
20	1				1136-0162-01	Distans .....	Spacer .....		
21	1				9997-0880-16	Skruv .....	Screw .....		
22	1				9739-0831-22	Mutter .....	Nut .....		
23	1				9747-0831-02	Mutter .....	Lock nut .....		
24	1				1136-0346-01	Spännstång .....	Tie rod .....		
25	1				1136-0093-01	Kulled .....	Ball joint .....		
26	1				9683-0030-02	Låsbricka .....	Lock washer .....		
27	1				9799-0831-02	Mutter .....	Nut .....		
28	1				9699-0090-02	Planbricka .....	Flat washer .....		
29	1				9675-0012-02	Starlock .....	Locking washer .....		
30	1				1136-0290-01	Remrulle .....	Belt roller .....		
31	1				1136-0234-01	Pinnbult .....	Stud bolt .....		
32	1				9699-0056-02	Planbricka .....	Flat washer .....		
33	2				9747-0831-02	Mutter .....	Lock nut .....		
34	2				1136-0915-01	Remrulle .....	Belt roller .....		
35	1				1136-0167-01	Distans- vä .....	Spacer- LH .....		
36	1				1136-0164-01	Distans- hö .....	Spacer- RH .....		
37	1				9997-0835-12	Skruv .....	Screw .....		
38	1				9997-0845-12	Skruv .....	Screw .....		
39	2				9699-0056-02	Planbricka .....	Flat washer .....		
40	2				9747-0831-02	Mutter .....	Lock nut .....		
41	1				1136-0520-01	Remskiva .....	Belt pulley .....		
42	1				9600-0050-00	Woodruffkil .....	Key .....		
43	1				9650-0016-04	Spårring .....	Lock ring .....		
44	1				1136-0050-01	Transaxel .....	Transaxle .....		
45	4				9997-0860-16	Skruv .....	Screw .....		
47	4				9739-0831-22	Mutter .....	Nut .....		
48	2				1136-0325-01	Momentstag .....	Stay .....		
49	2				1136-0017-01	Skruv .....	Screw .....		
50	2				9997-0816-16	Skruv .....	Screw .....		
51	2				9739-0831-22	Mutter .....	Nut .....		
52	1				1136-0181-01	Remstyrning .....	Belt guide .....		
53	2				9699-0035-02	Planbricka .....	Flat washer .....		
54	2				9739-0631-22	Mutter .....	Nut .....		
55	2				1136-0868-01	Lock .....	Cover .....		
72	2				1136-0455-01	Fälg .....	Rim .....		
73	2				1136-0270-01	Däck (Turf Saver) .....	Tire (Turf Saver) .....		
73	2				1136-0272-01	Däck (Deli) .....	Tire (Deli) .....		
74	2-4				9699-0119-02	Bricka .....	Washer .....		
75	2				1136-0305-01	Bricka .....	Washer .....		
76	2				9652-0015-04	Låsring .....	Retaining ring .....		
77	2				1136-0081-01	Navkapsel .....	Hub cap .....		
78	2				9545-0500-00	Ventil .....	Valve .....		

Peerless MST 205-535

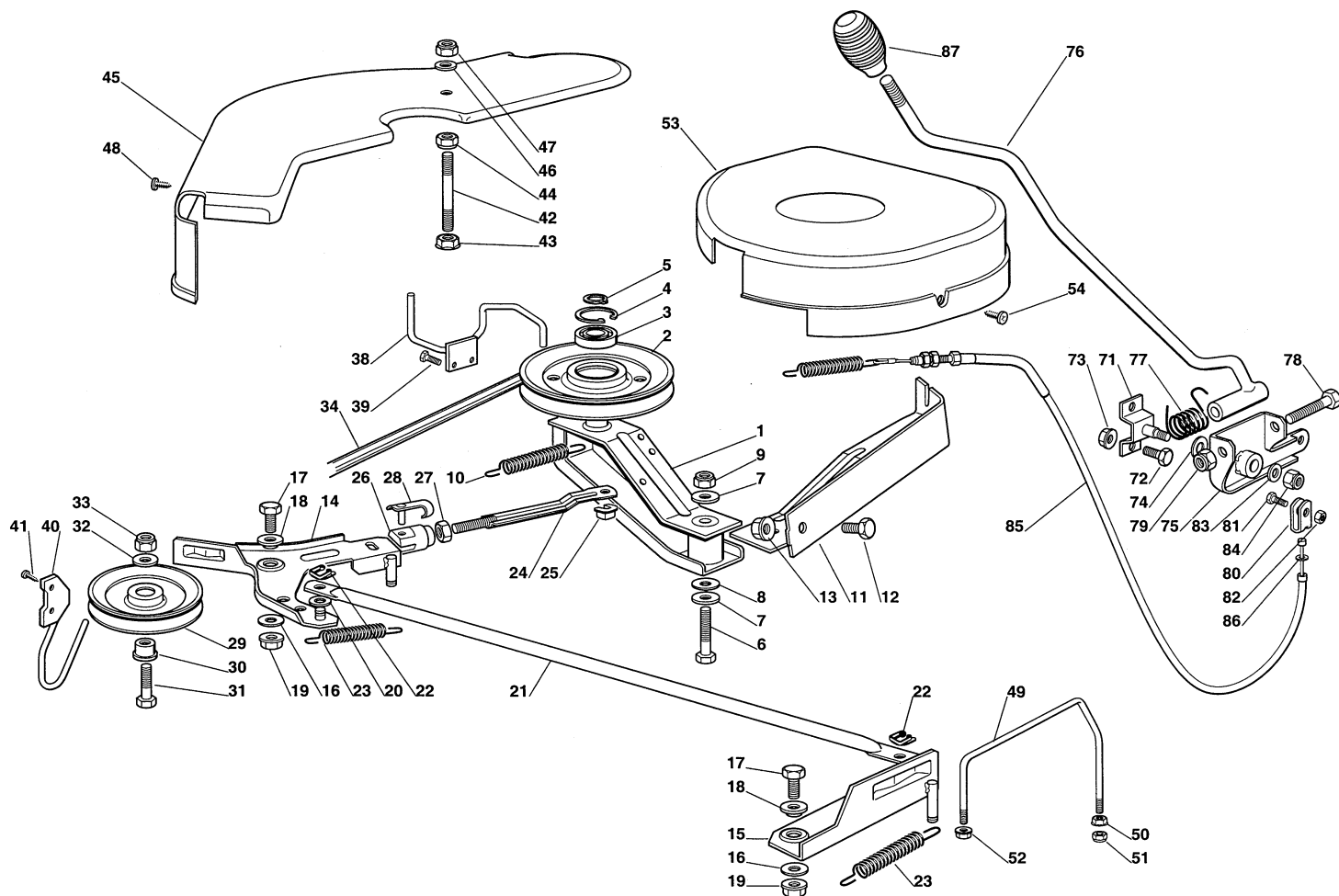
Peerless MST 205-535



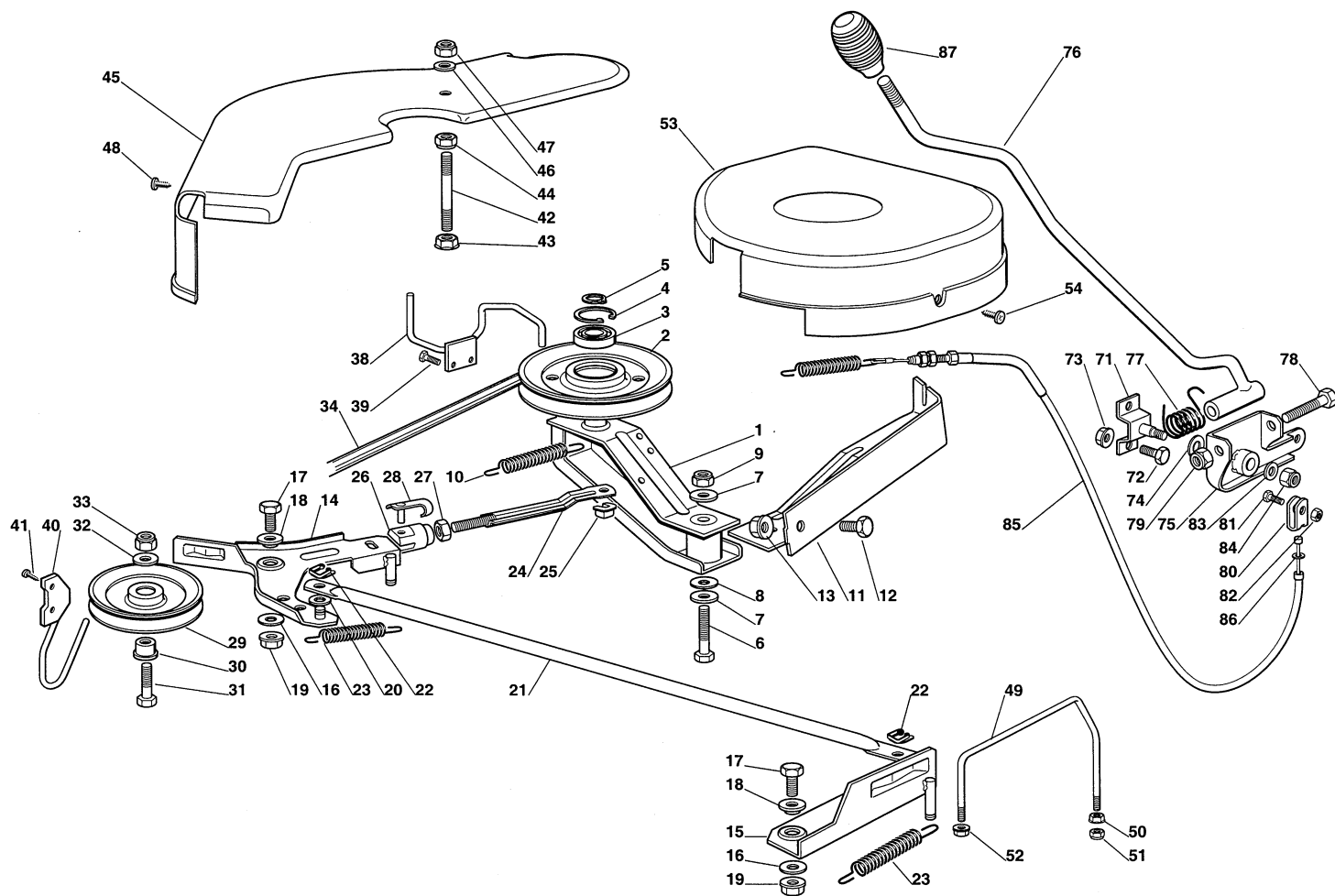
Utgåva Issue  2004- 13		Bildnr Picture No  1218		ESTATE PRESIDENT TRANSMISSION		ESTATE PRESIDENT TRANSMISSION		Sida Page  80	
Pos. Fig.	Antal/Quantity				Art nr Part No	Benämning	Description	Sats Kit	Anmärkning Notes
	2532								
1	1				1136-0287-01	Motorremskiva .....	Engine belt pulley .....		Kanzaki K46S
2	1				9987-5351-12	Skruv .....	Screw .....		
3	1				9683-0045-02	Bricka .....	Washer .....		
5	1				1136-0432-01	Kilrem .....	V- belt .....		
6	1				1136-0489-01	Spännarm .....	Tension arm .....		
7	1				9997-0630-12	Skruv .....	Screw .....		
8	2				1136-0123-01	Bussning .....	Bushing .....		
9	1				9747-0831-02	Mutter .....	Lock nut .....		
10	1				1136-0166-01	Distans .....	Spacer .....		
11	1				1136-0289-01	Spännrulle .....	Idler pulley .....		
12	1				9699-0056-02	Planbricka .....	Flat washer .....		
13	1				9747-0831-02	Mutter .....	Lock nut .....		
14	1				1136-0235-01	Ledbult .....	Pivot bolt .....		
15	2				1136-0309-01	Bricka .....	Washer .....		
16	1				9747-0831-02	Mutter .....	Lock nut .....		
17	1				1136-0348-01	Spännstång .....	Tie rod .....		
18	2				9799-0831-02	Mutter .....	Nut .....		
19	1				1136-0208-01	Fjäder .....	Spring .....		
20	1				1136-0162-01	Distans .....	Spacer .....		
21	1				9997-0880-16	Skruv .....	Screw .....		
22	1				9739-0831-22	Mutter .....	Nut .....		
23	1				9747-0831-02	Mutter .....	Lock nut .....		
24	1				1136-0290-01	Remrulle .....	Belt roller .....		
25	1				1136-0234-01	Pinnbult .....	Stud bolt .....		
26	1				9699-0056-02	Planbricka .....	Flat washer .....		
27	2				9747-0831-02	Mutter .....	Lock nut .....		
28	2				1136-0915-01	Remrulle .....	Belt roller .....		
29	1				1136-0174-01	Distans- vä .....	Spacer- LH .....		
30	1				1136-0170-01	Distans- hö .....	Spacer- RH .....		
31	1				9997-0840-16	Skruv .....	Screw .....		
32	1				9997-0850-16	Skruv .....	Screw .....		
33	2				9699-0056-02	Planbricka .....	Flat washer .....		
34	2				9747-0831-02	Mutter .....	Lock nut .....		
35	2				1136-0868-01	Lock .....	Cover .....		
41	1				1136-0053-01	Transaxel .....	Transaxle .....		
42	4				9997-0860-16	Skruv .....	Screw .....		
44	4				9739-0831-22	Mutter .....	Nut .....		
45	1				1136-0543-01	Stöd .....	Support .....		
46	1				9997-0845-12	Skruv .....	Screw .....		
47	2				9699-0090-02	Planbricka .....	Flat washer .....		
48	1				9747-0831-02	Mutter .....	Lock nut .....		
49	2				9847-8216-16	Skruv .....	Screw .....		
50	1				9997-0816-16	Skruv .....	Screw .....		
51	1				9739-0831-22	Mutter .....	Nut .....		
52	1				1136-0190-01	Arm .....	Lever .....		
53	1				9997-0820-16	Skruv .....	Screw .....		
54	1				1136-0006-01	Fjäderbricka .....	Elastic washer .....		
55	1				1136-0309-01	Bricka .....	Washer .....		
56	1				9747-0831-02	Mutter .....	Lock nut .....		
57	1				1136-0114-01	Stag .....	Rod .....		
58	1				9675-0009-02	Starlock .....	Starlock .....		
72	2				1136-0455-01	Fälg .....	Rim .....		
73	2				1136-0270-01	Däck (Turf Saver) .....	Tire (Turf Saver) .....		
73	2				1136-0272-01	Däck (Deli) .....	Tire (Deli) .....		
74	2				9545-0500-00	Ventil .....	Valve .....		
75	2-4				9699-0119-02	Bricka .....	Washer .....		
76	2				1136-0175-01	Distans .....	Spacer .....		
77	2				1136-0312-01	Bricka .....	Washer .....		
78	2				9652-0015-04	Låsring .....	Retaining ring .....		
79	2				1136-0081-01	Navkapsel .....	Hub cap .....		



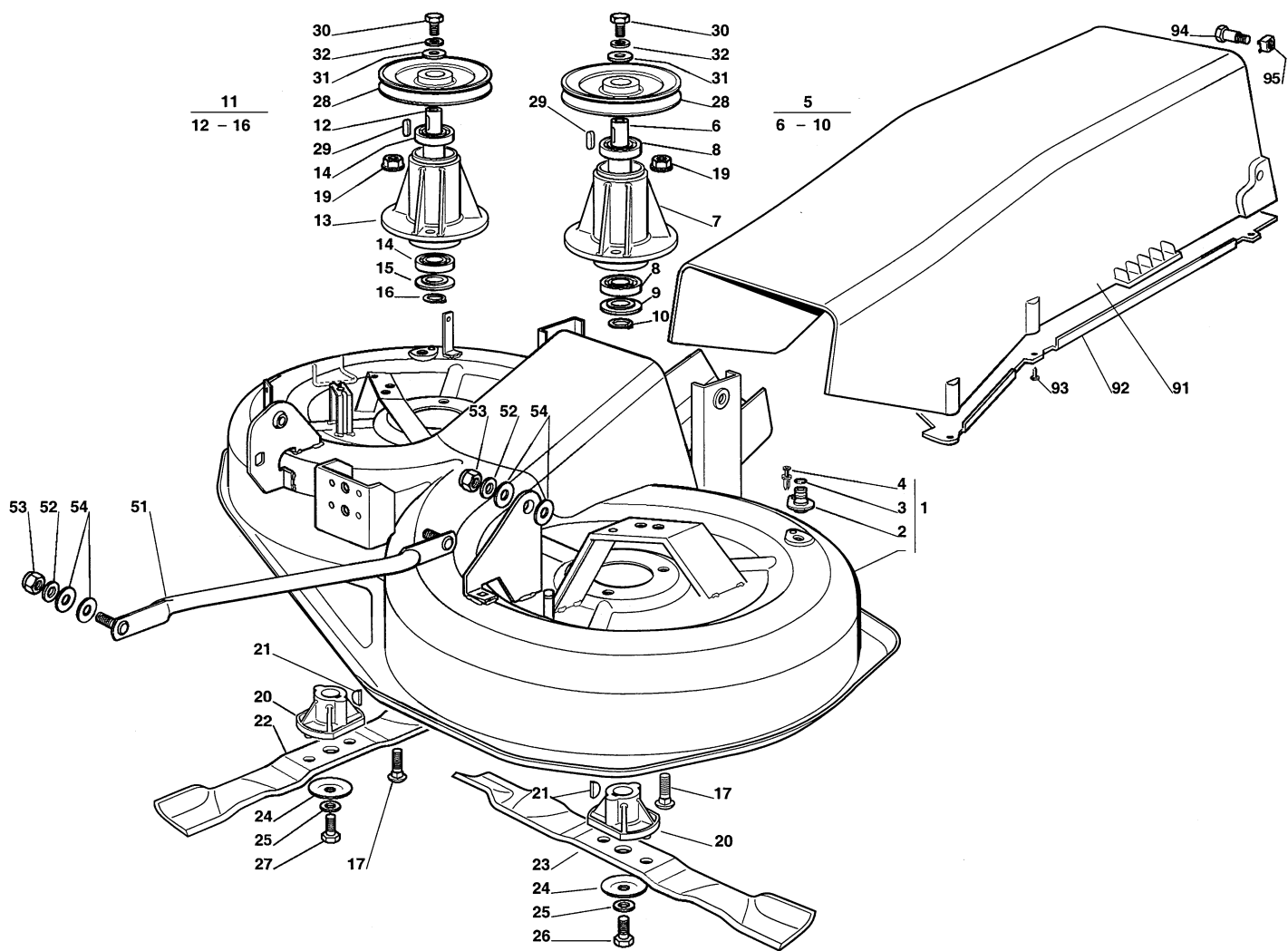
Utgåva Issue 2004- 13		Bildnr Picture No 1219A		ESTATE SENATOR ESTATE PRESIDENT AGGREGATSLYFT		ESTATE SENATOR ESTATE PRESIDENT MOWER DECK LIFT		Sida Page 82	
Pos. Fig.	Antal/Quantity				Art nr Part No	Benämning	Description	Sats Kit	Anmärkning Notes
	2531 2532								
1	1				1136-0487-01	Lyftspak kpl .....	Lift lever assy .....		Inkl. pos 2 - 9
2	1				1136-0493-01	• Lyftspak .....	• Lift lever .....		
3	1				1136-0298-01	• Tryckknapp .....	• Button .....		
4	1				1136-0222-01	• Spärrhake .....	• Dog .....		
5	1				1136-0227-01	• Sprint.....	• Pin.....		
6	1				1136-0105-01	• Tryckstång .....	• Push rod .....		
7	1				1136-0193-01	• Handtag .....	• Handle.....		
8	1				1136-0203-01	• Fjäder.....	• Spring .....		
9	1				9675-0012-02	• Starlock .....	• Locking washer.....		
10	1				1136-0444-01	Lyftaxel .....	Axle .....		
11	2				1136-0078-01	Bussning .....	Bushing.....		
12	1				1136-0163-01	Distans .....	Spacer.....		
13	1				9699-0119-02	Bricka .....	Washer .....		
14	2				9595-0235-00	Spännstift .....	Locating pin .....		
15	1				1136-0319-01	Höjdställn.segment.....	Height adjust sector.....		
16	2				9997-0816-16	Skruv .....	Screw .....		
17	2				9739-0831-22	Mutter.....	Nut .....		
18	1				1136-0460-01	Lyftwire.....	Lift wire.....		
19	1				1136-0291-01	Winerulle .....	Cable pulley.....		
20	1				1136-0232-01	Distans .....	Spacer.....		
21	1				9997-0850-16	Skruv .....	Screw .....		
22	1				9699-0056-02	Planbricka.....	Flat washer.....		
23	1				9739-0831-22	Mutter.....	Nut .....		
24	1				1136-0443-01	Lyftaxel .....	Lift axle .....		
25	2				1136-0253-01	Bygel .....	Clamp .....		
26	4				9997-0616-16	Skruv .....	Screw .....		
27	4				9739-0631-22	Mutter.....	Nut .....		
28	1				1136-0492-01	Lyftarm .....	Lift arm .....		
29	2				1136-0255-01	Bygel .....	Clamp.....		
30	4				9847-8016-16	Skruv .....	Screw .....		
31	1				1136-0108-01	Lyftstag.....	Lift rod .....		
32	1				1136-0235-01	Ledbult .....	Pivot bolt.....		
33	1				9799-0831-02	Mutter.....	Nut .....		
34	1				9747-0831-02	Mutter.....	Lock nut .....		
35	2				1136-0309-01	Bricka .....	Washer.....		
36	1				9747-0831-02	Mutter.....	Lock nut .....		
37	1				9699-0090-02	Planbricka.....	Flat washer.....		
38	1				1136-0095-01	Låsnål .....	Hair pin .....		
51	1				1136-0347-01	Lyftlänk .....	Lift tie rod .....		
52	1				1136-0231-01	Ledbult .....	Pivot bolt.....		
53	1				9699-0035-02	Planbricka.....	Flat washer.....		
54	1				1136-0308-01	Bricka .....	Washer .....		
55	1				1136-0095-01	Låsnål .....	Hair pin .....		
56	2				1136-0308-01	Bricka .....	Washer.....		
57	2				9747-1031-02	Låsmutter .....	Lock nut .....		
58	1				9799-1031-02	Mutter.....	Nut .....		
61	1				1136-0347-01	Lyftlänk .....	Lift tie rod .....		
62	1				1136-0231-01	Ledbult .....	Pivot bolt.....		
63	1				9699-0035-02	Planbricka.....	Flat washer.....		
64	1				1136-0308-01	Bricka .....	Washer.....		
65	1				1136-0095-01	Låsnål .....	Hair pin .....		
66	2				1136-0308-01	Bricka .....	Washer.....		
67	2				9747-1031-02	Låsmutter .....	Lock nut .....		
68	1				9799-1031-02	Mutter.....	Nut .....		
71	1				1136-1249-01	Lyftlänk .....	Lift tie rod .....		
72	1				1136-1241-01	Ledbult .....	Pivot bolt.....		
73	1				1136-0308-01	Bricka .....	Washer.....		
74	1				9699-0035-02	Planbricka.....	Flat washer.....		
75	1				1136-0095-01	Låsnål .....	Hair pin .....		
76	2				1136-0308-01	Bricka .....	Washer.....		
77	2				9747-1031-02	Låsmutter .....	Lock nut .....		
78	1				9799-1031-02	Mutter.....	Nut .....		



Utgåva Issue  2004- 13		Bildnr Picture No  1220C		ESTATE SENATOR ESTATE PRESIDENT AGGREGATSINKOPPLING		ESTATE SENATOR ESTATE PRESIDENT MOWER DECK ENGAGEMENT		Sida Page  84	
Pos. Fig.	Antal/Quantity				Art nr Part No	Benämning	Description	Sats Kit	Anmärkning Notes
	2531 2532								
1	1				1136-0494-01	Spännarm .....	Tension arm .....		
2	1				1136-0296-01	Spännrulle .....	Idler pulley .....		
3	1				1136-0070-01	Kullager .....	Ball bearing .....		
4	1				9651-0035-04	Låsring .....	Lock ring .....		
5	1				9650-0015-04	Låsring .....	Lock ring .....		
6	1				9997-0890-12	Skruv .....	Screw .....		
7	2				1136-0014-01	Bricka .....	Washer .....		
8	1				1136-0089-01	Bricka .....	Washer .....		
9	1				9747-0831-02	Mutter .....	Lock nut .....		
10	1				1136-0085-01	Fjäder .....	Spring .....		
11	1				1136-0531-01	Wirehållare .....	Wire holder .....		
12	1				9997-0816-16	Skruv .....	Screw .....		
13	1				9739-0831-22	Mutter .....	Nut .....		
14	1				1136-0495-01	Arm- hö .....	Lever- RH .....		
15	1				1136-0496-01	Arm- vä .....	Lever- LH .....		
16	2				1136-0089-01	Bricka .....	Washer .....		
17	2				9997-0816-16	Skruv .....	Screw .....		
18	2				1136-0079-01	Bussning .....	Bushing .....		
19	2				9739-0831-22	Mutter .....	Nut .....		
20	1				1136-0309-01	Bricka .....	Washer .....		
21	1				1136-0110-01	Stag .....	Rod .....		
22	2				1136-0009-01	Låsplatta .....	Lock plate .....		
23	2				1136-0214-01	Fjäder .....	Spring .....		
24	1				1136-1280-01	Stång .....	Rod .....		
25	1				1136-0009-01	Låsplatta .....	Lock plate .....		
26	1				1136-0047-01	Gaffel .....	Fork .....		
27	1				9799-0631-02	Mutter .....	Nut .....		
28	1				1136-0042-01	Låsbult .....	Clip bolt .....		
29	1				1136-0290-01	Remrulle .....	Belt roller .....		
30	1				1136-0161-01	Distans .....	Spacer .....		
31	1				9997-0835-12	Skruv .....	Screw .....		
32	1				9699-0056-02	Planbricka .....	Flat washer .....		
33	1				9747-0831-02	Mutter .....	Lock nut .....		
34	1				1136-0437-01	Sexkantsrem .....	Hexagon belt .....		
38	1				1136-0180-01	Remstyrning .....	Belt guide .....		
39	2				9847-8116-16	Skruv .....	Screw .....		
40	1				1136-0182-01	Remstyrning .....	Belt guide .....		
41	2				9847-8016-16	Skruv .....	Screw .....		
42	1				1136-0265-01	Pinnbult .....	Stud bolt .....		
43	1				9739-0831-22	Mutter .....	Nut .....		
44	1				9739-0831-22	Mutter .....	Nut .....		
45	1				1136-0130-01	Kåpa .....	Cover .....		
46	1				9699-0056-02	Planbricka .....	Flat washer .....		
47	1				9747-0831-02	Mutter .....	Lock nut .....		
48	2				9848-8013-16	Skruv .....	Screw .....		
49	1				1136-1235-01	Remstyrning .....	Belt guide .....		
50	1				9739-0831-22	Mutter .....	Nut .....		
51	1				9747-0831-02	Mutter .....	Lock nut .....		
52	1				9739-0631-22	Mutter .....	Nut .....		
53	1				1136-0131-01	Remkåpa .....	Belt cover .....		
54	2				9848-8013-16	Skruv .....	Screw .....		
71	1				1136-0537-01	Fäste .....	Support .....		
72	2				9997-0816-16	Skruv .....	Screw .....		
73	2				9739-0831-22	Mutter .....	Nut .....		
74	1				1136-0088-01	Bricka .....	Washer .....		
75	1				1136-0528-01	Spakhållare .....	Lever holder .....		
76	1				1136-0491-01	Inkopplingsspak .....	Engagement lever .....		
77	1				1136-0213-01	Fjäder .....	Spring .....		
78	1				9997-0880-16	Skruv .....	Screw .....		
79	1				9747-0831-02	Mutter .....	Lock nut .....		
80	1				1136-0080-01	Anslutningsgaffel .....	Connecting fork .....		
81	1				9997-0620-16	Skruv .....	Screw .....		
82	1				9747-0631-02	Låsmutter .....	Lock nut .....		



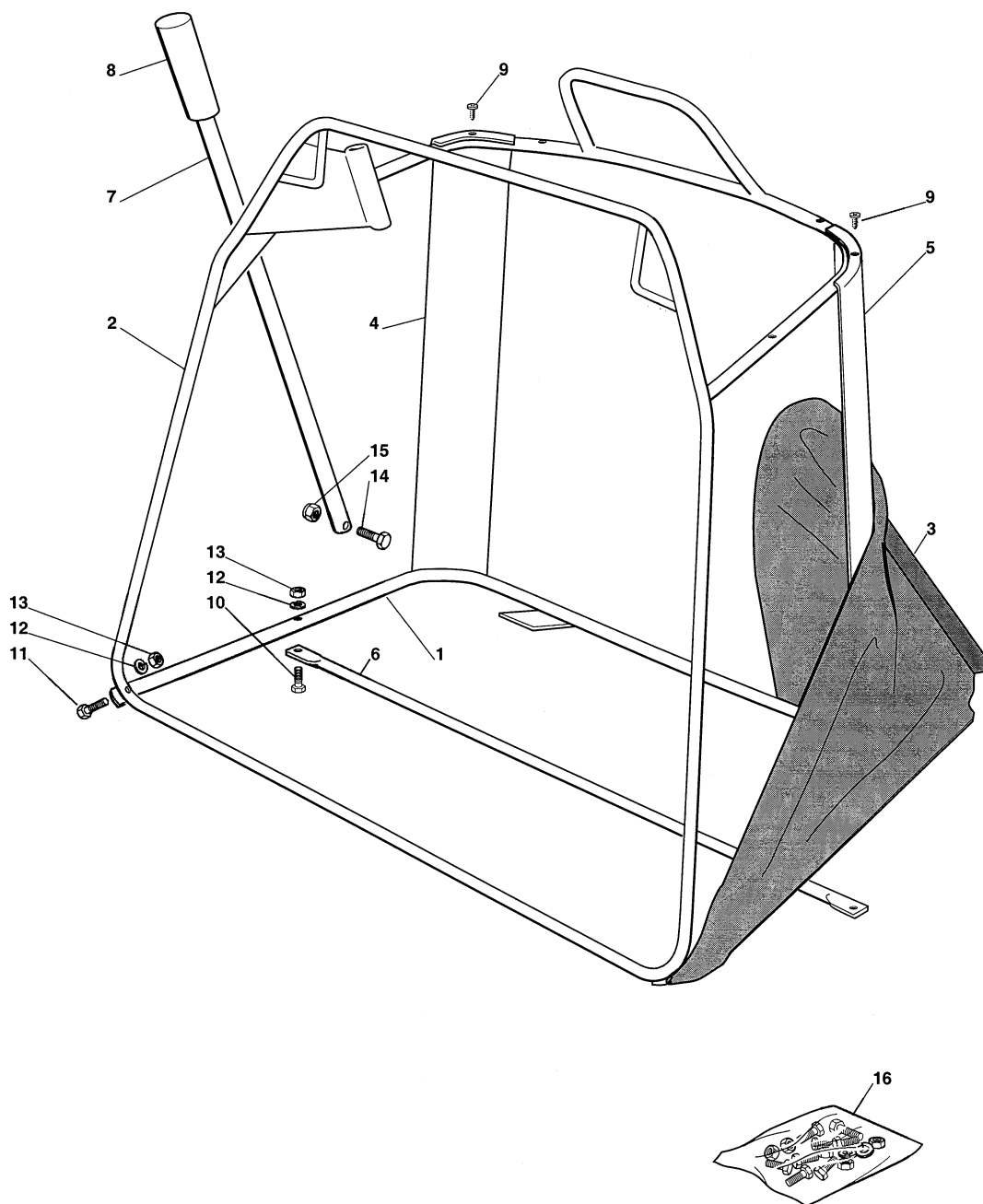
Utgåva Issue 2004- 13		Bildnr Picture No 1220C		ESTATE SENATOR ESTATE PRESIDENT AGGREGATSINKOPPLING		ESTATE SENATOR ESTATE PRESIDENT MOWER DECK ENGAGEMENT		Sida Page 86	
Pos. Fig.	Antal/Quantity				Art nr Part No	Benämning	Description	Sats Kit	Anmärkning Notes
	2531 2532								
83	1				9699-0056-02	Planbricka.....	Flat washer.....		
84	1				9712-0831-02	Låsmutter .....	Lock nut.....		
85	1				1136-0461-01	Krafttuttagswire .....	PTO- wire .....		
86	1				9699-0056-02	Planbricka.....	Flat washer.....		
87	1				1136-0197-01	Handtag .....	Knob .....		



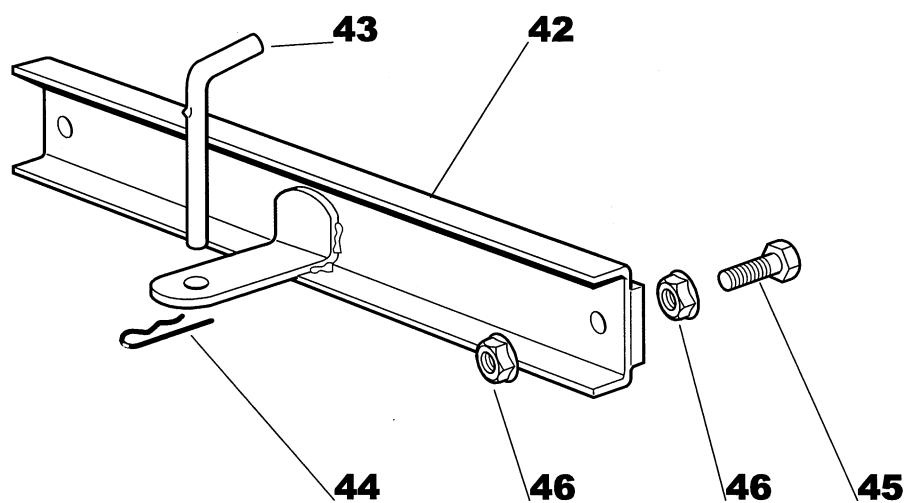
Utgåva Issue 2004- 13		Bildnr Picture No 1221B		ESTATE SENATOR ESTATE PRESIDENT KLIPPAGGREGAT		ESTATE SENATOR ESTATE PRESIDENT MOWER DECK		Sida Page 88	
Pos. Fig.	Antal/Quantity				Art nr Part No	Benämning	Description	Sats Kit	Anmärkning Notes
	2531	2532							
1	1				1136-1289-01	Klippagggregatskåpa .....	Mower deck casing .....		Inkl. pos 2 - 4
2	2				1136-0120-01	• Vattenslangnippel .....	• Water hose connection.....		
3	2				1136-0068-01	• O- ring .....	• O- ring .....		
4	2				1136-0012-01	• Nit .....	• Rivet .....		
5	1				1136-0481-01	Lagerbox kpl .....	Bearing box assy .....		Inkl. pos 6 - 10
6	1				1136-0099-01	• Knivaxel .....	• Blade shaft .....		
8	2				1136-0069-01	• Kullager .....	• Ball bearing .....		
9	1				1136-0176-01	• Dammskydd .....	• Dust cover .....		
10	1				9650-0020-04	• Spårring .....	• Circlip .....		Inkl. pos 12 - 16
11	1				1136-0482-01	Lagerbox kpl .....	Bearing box assy .....		
12	1				1136-0100-01	• Knivaxel .....	• Blade shaft .....		
14	2				1136-0069-01	• Kullager .....	• Ball bearing .....		
15	1				1136-0176-01	• Dammskydd .....	• Dust cover .....		
16	1				9650-0020-04	• Spårring .....	• Circlip .....		
17	6				9898-0825-16	Skruv .....	Screw .....		
19	6				9739-0831-22	Mutter .....	Nut .....		
20	2				1136-0221-01	Knivfäste .....	Blade hub .....		
21	2				9600-0014-00	Kil .....	Key .....		
22	1				1136-1282-01	Kniv- hö .....	Blade- right .....		
23	1				1136-0750-01	Kniv .....	Blade .....		
24	2				1136-0083-01	Fjäderbricka .....	Elastic washer .....		
25	2				1136-0015-01	Bricka .....	Washer .....		
26	1				9987-5238-12	Knivbult .....	Blade bolt .....		
27	1				1136-0018-01	Knivbult (vå- gängad) .....	Blade bolt (L thread) .....		
28	2				1136-1244-01	Remskiva .....	Belt pulley .....		
29	2				1136-0001-01	Kil .....	Key .....		
30	2				9997-0820-16	Skruv .....	Screw .....		
31	2				1136-0307-01	Bricka .....	Washer .....		
32	2				9683-0030-02	Låsbricka .....	Lock washer .....		
51	2				1136-0448-01	Stång .....	Equalizer rod .....		
52	4				9699-0035-02	Planbricka .....	Flat washer .....		
53	4				9747-1031-02	Låsmutter .....	Lock nut .....		
54	8				1136-0308-01	Bricka .....	Washer .....		
91	1				1136-0139-01	Utkaströr .....	Discharge chute .....		
92	1				1136-0177-01	Deflektor .....	Deflector .....		
93	6				9836-9618-12	Skruv .....	Screw .....		
94	2				1136-0245-01	Bult .....	Pin bolt .....		
95	2				1136-0005-01	Fyrkantmutter .....	Square nut .....		



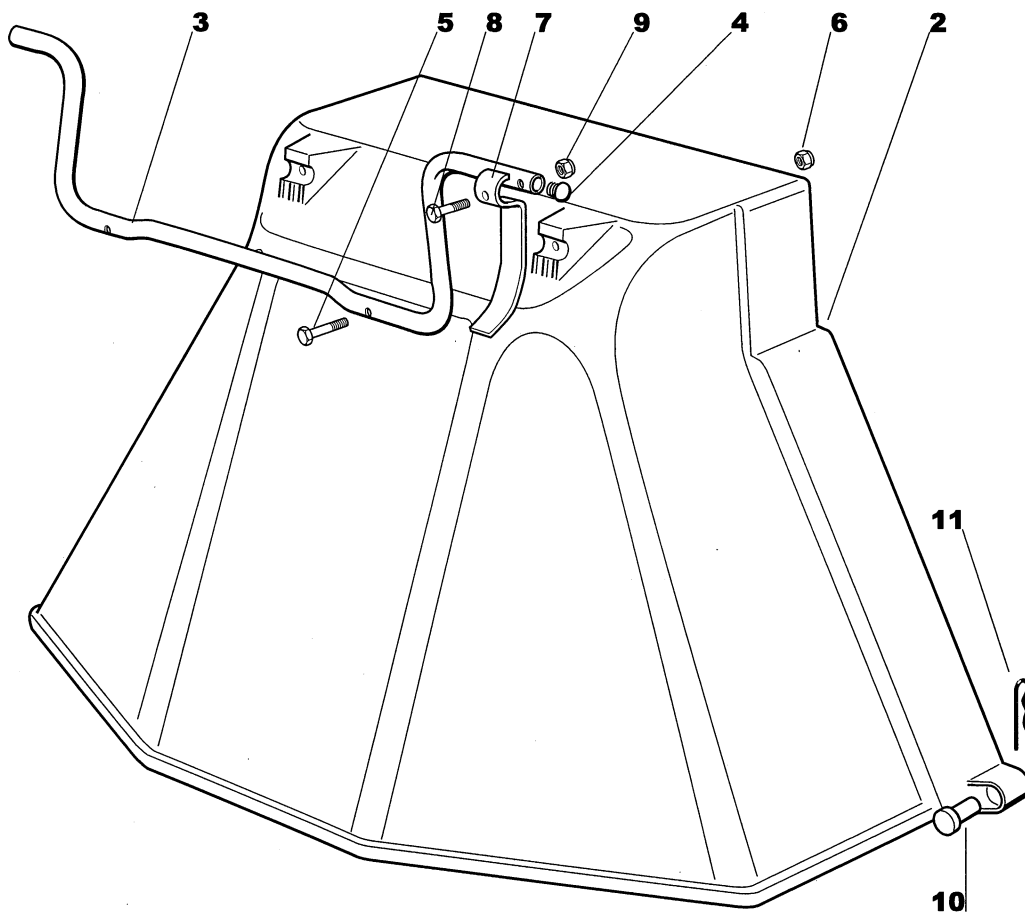
Utgåva Issue 2004- 13		Bildnr Picture No 1222A		ESTATE SENATOR ESTATE PRESIDENT UPPSAMLARE (fast del)		ESTATE SENATOR ESTATE PRESIDENT GRASS CATCHER (fixed part)		Sida Page 90	
Pos. Fig.	Antal/Quantity				Art nr Part No	Benämning	Description	Sats Kit	Anmärkning Notes
	2531 2532								
1	1				1136-0547-01	Ram .....	Frame .....		
2	5				9997-0625-16	Skruv .....	Screw .....		
3	5				9747-0631-02	Låsmutter .....	Lock nut .....		
4	1				1136-0445-01	Tryckstång .....	Push rod .....		
5	1				1136-0216-01	Fjäder.....	Spring .....		
6	2				1136-0236-01	Tryckmutter .....	Push nut .....		
7	2				9799-0631-02	Mutter.....	Nut .....		
11	1				1136-1476-01	Fäste .....	Bracket .....		
12	1				1136-1474-01	Fäste .....	Bracket .....		
13	1				1136-1470-01	Sprint.....	Pin .....		
14	1				9739-0631-22	Mutter.....	Nut .....		
15	1				1136-0209-01	Fjäder.....	Spring .....		
16	1				1136-1465-01	Skruv .....	Screw .....		
20	2				1136-0334-01	Stöd.....	Support .....		
21	4				9997-0820-16	Skruv .....	Screw .....		
22	4				9747-0831-02	Mutter.....	Lock nut.....		
23	4				9699-0090-02	Planbricka.....	Flat washer .....		
31	1				1136-0280-01	Brytarskydd .....	Micro protection .....		
32	1				1136-0281-01	Skyddslock .....	Protection cover .....		
33	1				1136-0186-01	Brytararm .....	Switch lever .....		
34	1				1136-0007-01	Axel .....	Pin .....		
35	1				1136-0326-01	Fäste .....	Bracket .....		
36	3				9847-8013-16	Skruv .....	Screw .....		
37	2				9848-8013-16	Skruv .....	Screw .....		



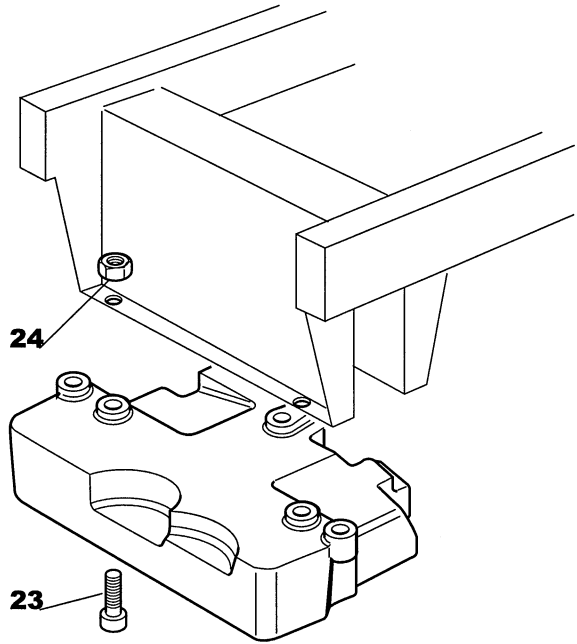
Utgåva Issue  2004- 13		Bildnr Picture No  1223A		ESTATE SENATOR ESTATE PRESIDENT UPPSAMLARE (rörlig del)		ESTATE SENATOR ESTATE PRESIDENT GRASS CATCHER (mobile part)		Sida Page  92	
Pos. Fig.	Antal/Quantity				Art nr Part No	Benämning	Description	Sats Kit	Anmärkning Notes
	2531 2532								
1	1				1136-0546-01	Ram- nedre .....	Frame- lower .....		Inkl. pos 9 - 15
2	1				1136-0545-01	Ram- övre .....	Frame- upper .....		
3	1				1136-0473-01	Uppsamlingsäck .....	Grass bag .....		
4	1				1136-0104-01	Vinkelstöd- hö .....	Angle support- RH .....		
5	1				1136-0103-01	Vinkelstöd- vä .....	Angle support- LH .....		
6	1				1136-0523-01	Förstärkningsstag .....	Reinforcement rod .....		
7	1				1136-0355-01	Spak .....	Lever .....		
8	1				1136-0195-01	Handtag .....	Handle .....		
9	4				9847-8116-16	• Skruv .....	• Screw .....		
10	2				9997-0630-12	• Skruv .....	• Screw .....		
11	2				9997-0630-12	• Skruv .....	• Screw .....		
12	4				9683-0010-02	• Bricka .....	• Washer .....		
13	4				9799-0631-02	• Mutter .....	• Nut .....		
14	1				9997-0630-12	• Skruv .....	• Screw .....		
15	1				9747-0631-02	• Låsmutter .....	• Lock nut .....		
16	1				1136-0598-01	Skruvsats .....	Screw set .....		



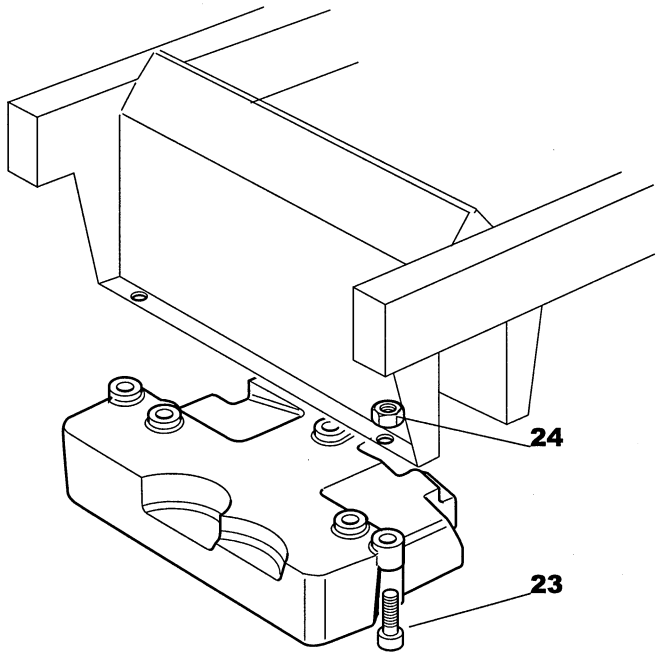
Utgåva Issue  2004- 13		Bildnr Picture No  1251		DRAG ART.NR 13- 0933- 11		TOW BAR ART.NO 13- 0933- 11		Sida Page  164	
Pos. Fig.	Antal/Quantity				Art nr Part No	Benämning	Description	Sats Kit	Anmärkning Notes
	0933								
42	1				1136-0463-01	Balk .....	Girder .....		
43	1				1136-0228-01	Dragsprint .....	Tow pin .....		
44	1				1136-0096-01	Låsnål .....	Hair pin .....		
45	2				9997-0825-16	Skruv .....	Screw .....		
46	6				9739-0831-22	Mutter .....	Nut .....		



Utgåva Issue  2004- 13		Bildnr Picture No  1249		DEFLEKTOR ART.NR 13- 0915- 11		DEFLECTOR ART.NO 13- 0915- 11		Sida Page  152	
Pos. Fig.	Antal/Quantity				Art nr Part No	Benämning	Description	Sats Kit	Anmärkning Notes
	0915								
2	1				1136-0504-01	Utkastskydd .....	Ejection guard .....		
3	1				1136-0356-01	Stödrör .....	Support .....		
4	2				1136-0062-01	Plugg .....	Cap .....		
5	2				9997-0635-12	Skruv .....	Screw .....		
6	2				9747-0631-02	Låsmutter .....	Lock nut .....		
7	1				1136-0257-01	Bygel .....	Plate .....		
8	1				9997-0625-16	Skruv .....	Screw .....		
9	1				9747-0631-02	Låsmutter .....	Lock nut .....		
10	2				1136-0229-01	Sprint .....	Pin .....		
11	2				9598-0002-02	Låsnål .....	Pin lock .....		

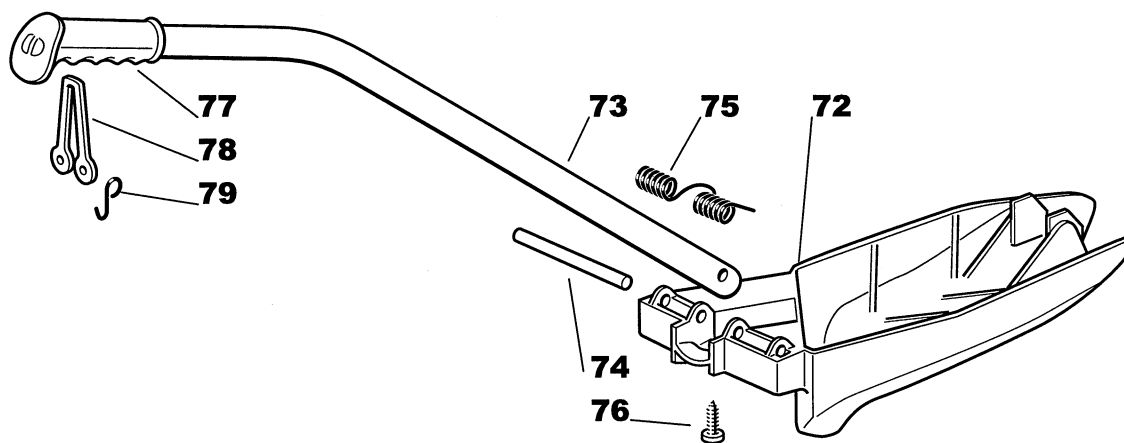


Estate Senator - President - Royal - Pro 22



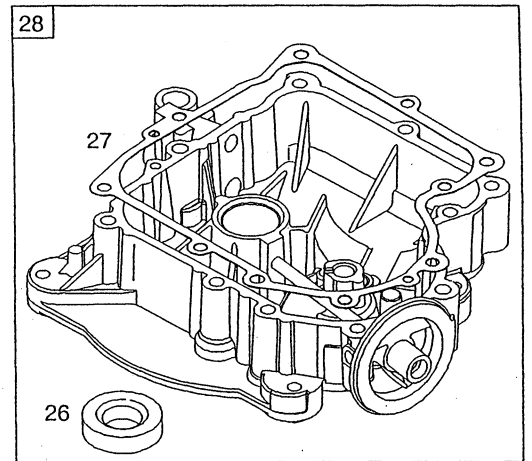
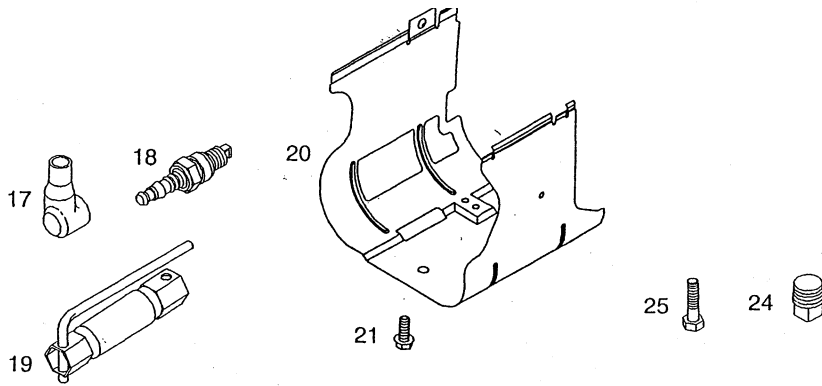
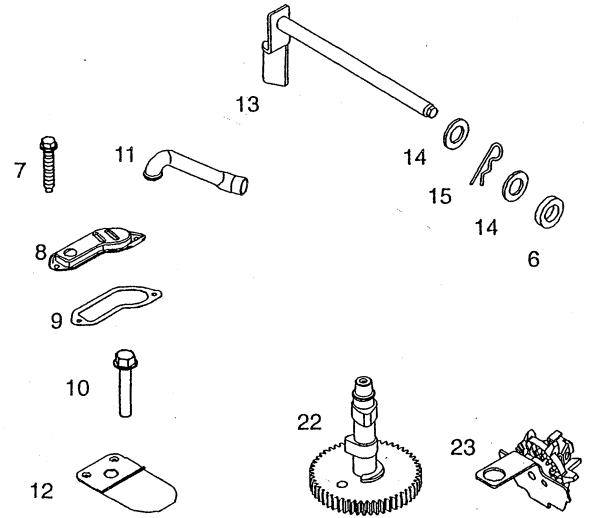
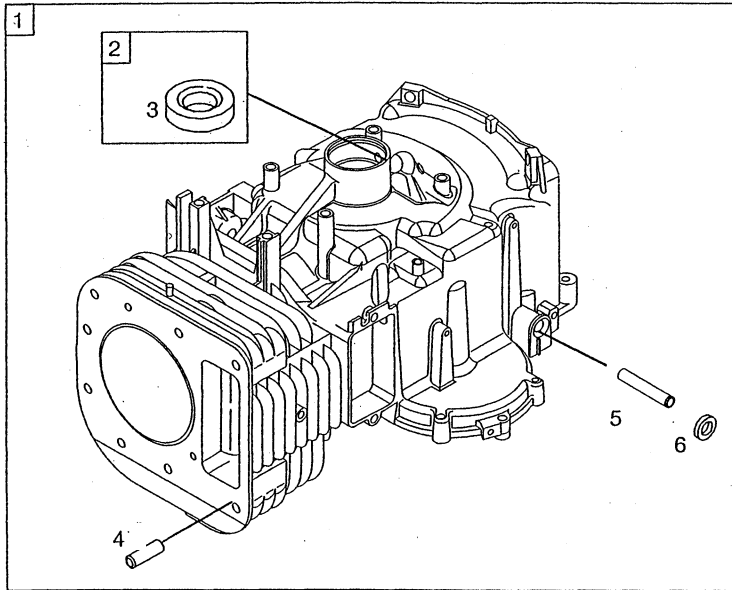


Utgåva Issue  2004- 13		Bildnr Picture No  1253B		FRONTVIKT ART.NR 13- 0912- 11		FRONT WEIGHT ART.NO 13- 0912- 11		Sida Page  148	
Pos. Fig.	Antal/Quantity				Art nr Part No	Benämning	Description	Sats Kit	Anmärkning Notes
	0912								
23	3				9939- 0850- 12	Skruv .....	Screw .....		
24	3				9747- 0831- 02	Mutter.....	Lock nut .....		

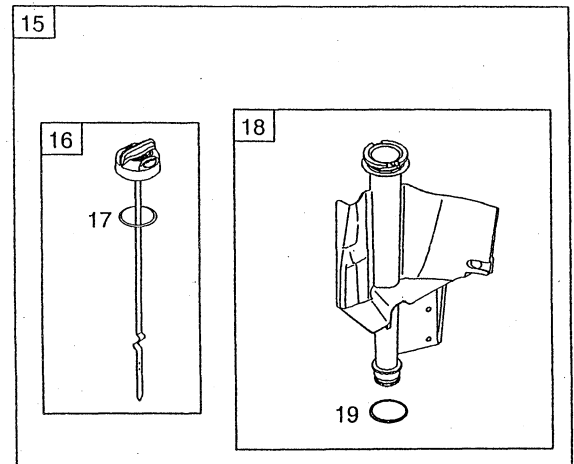
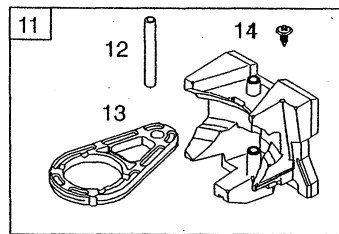
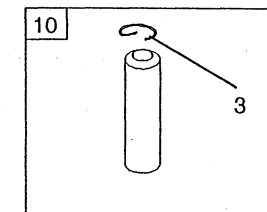
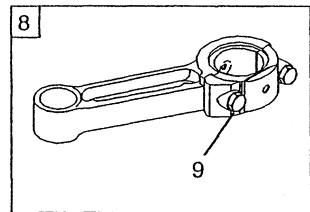
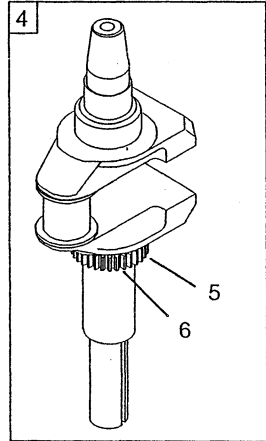
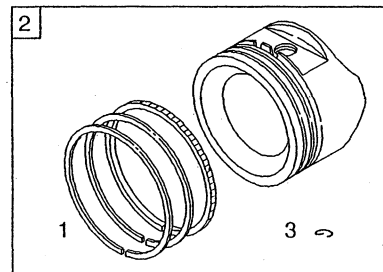


Utgåva Issue  2004- 13		Bildnr Picture No  1559		MULCHINGSATS ART.NR 13- 0935- 11		MULCHING KIT ART.NO 13- 0935- 11		Sida Page  160	
Pos. Fig.	Antal/Quantity				Art nr Part No	Benämning	Description	Sats Kit	Anmärkning Notes
	0935								
72	1				1136- 1233- 01	Deflektor .....	Deflector .....		
73	1				1136- 1237- 01	Handtagsrör.....	Handle tube .....		
74	1				1136- 1242- 01	Sprint.....	Pin .....		
75	1				1136- 1239- 01	Fjäder.....	Spring .....		
76	1				9836- 9635- 12	Skruv .....	Screw .....		
77	1				1136- 0882- 01	Handtag .....	Handgrip .....		
78	1				1136- 0927- 01	Elastiskt band .....	Elastic tie.....		
79	2				1136- 0877- 01	Krok.....	Hook .....		

A

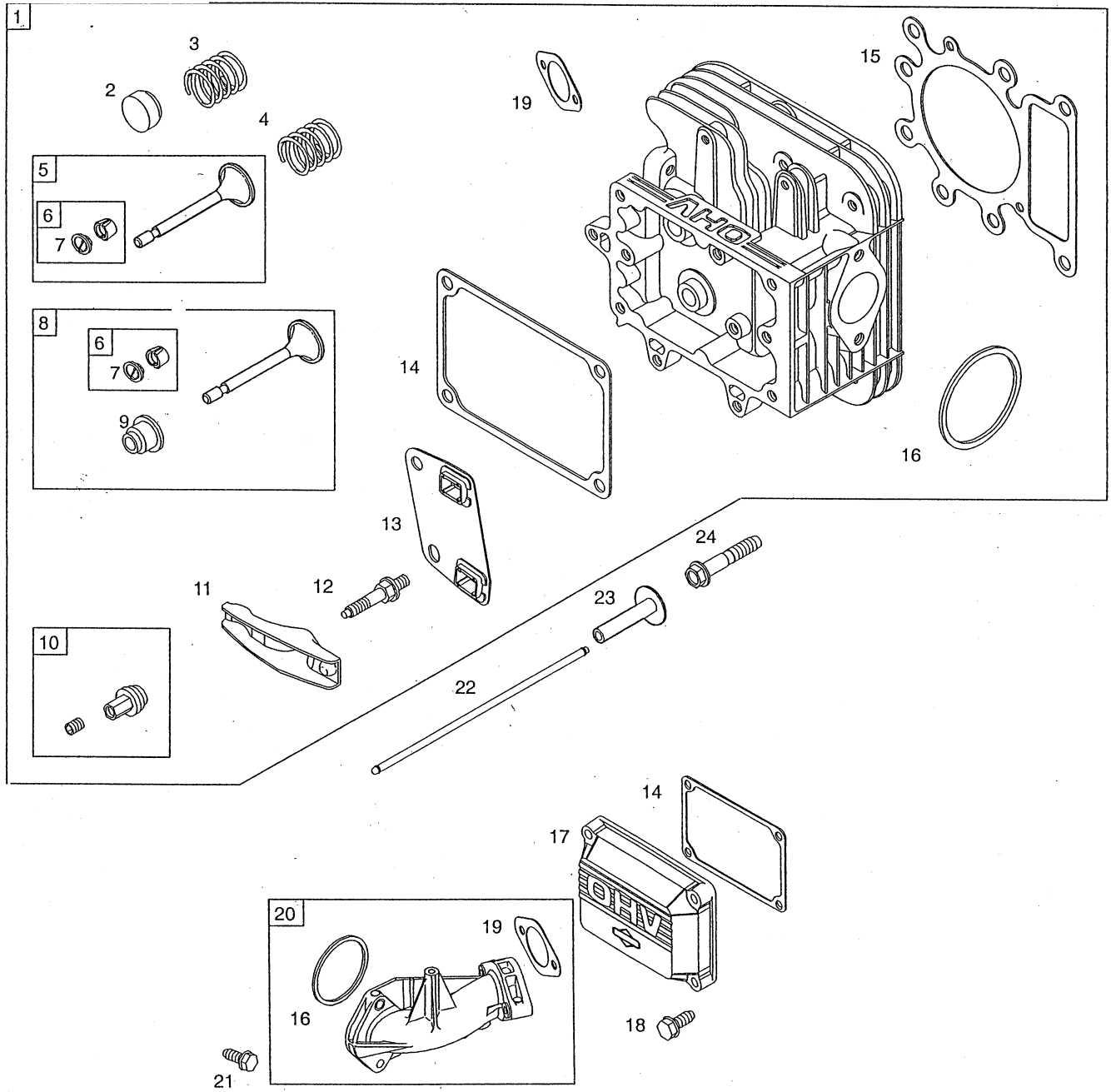


B



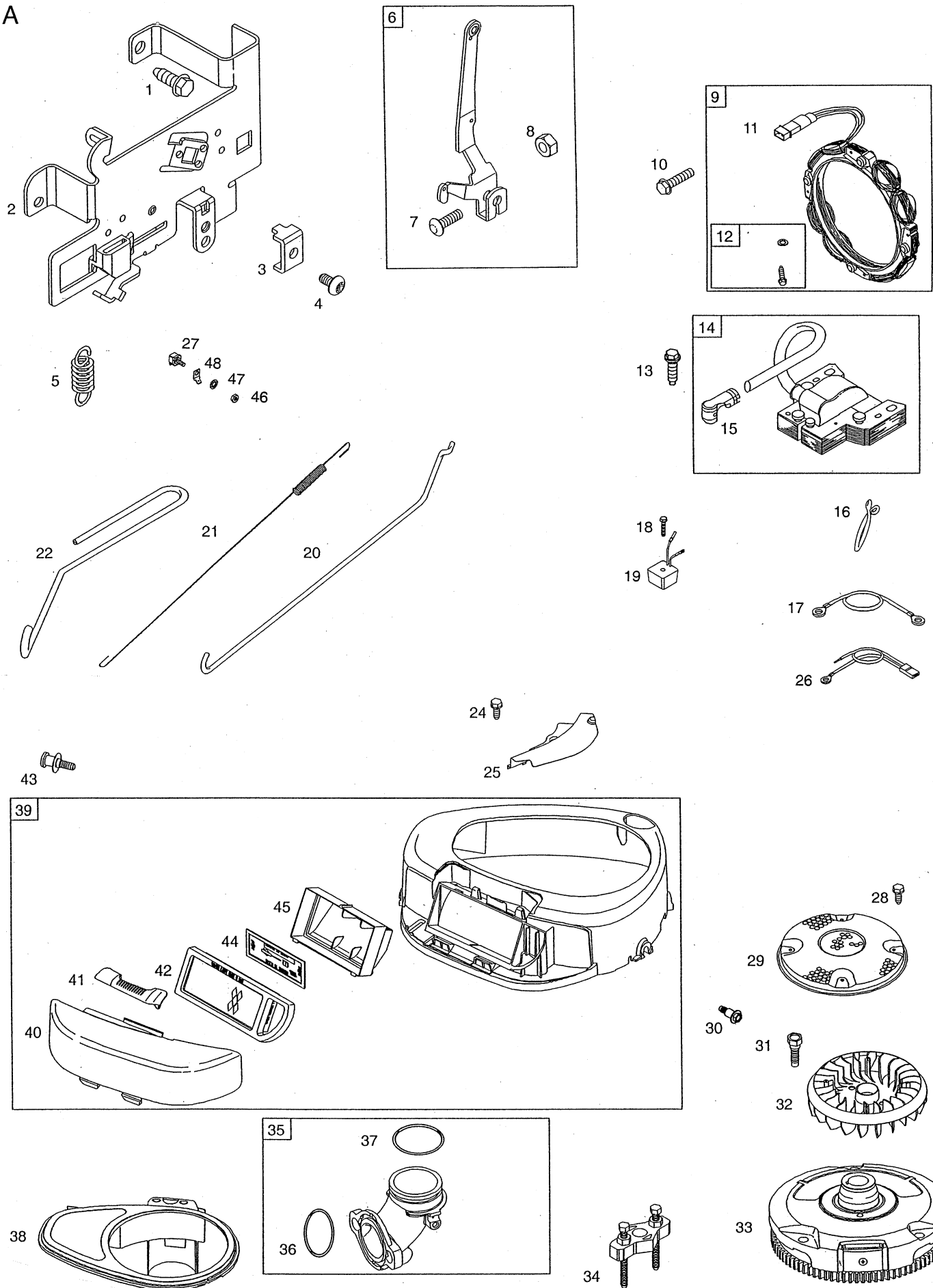
Utgåva Issue		Bildnr Picture No		BRIGGS & STRATTON 21A907 CYLINDER (A) VEVAXEL (B)		BRIGGS & STRATTON 21A907 CYLINDER (A) CRANKSHAFT (B)		Sida Page	
2004- 13		1692						196	
Pos. Fig.	Antal/Quantity				Art nr Part No	Benämning	Description	Sats Kit	Anmärkning Notes
	21A 907- 0146								
A01	1				697377	Cylinder kpl.....	Cylinder assy.....		Standard .020" oversize Standard .020" oversize
A02	1				399265	• Bussning.....	• Bushing.....		
A03	1				391086	• • Tätningsring.....	• • Seal.....		
A04	2				690959	• Tapp.....	• Locating pin.....		
A05	1				697144	• Bussning.....	• Bushing.....		
A06	1				692407	• Tätning.....	• Seal.....		
A07	2				697157	Skruv.....	Screw.....		
A08	1				697112	Lock.....	Cover.....		
A09	1				697109	Packning.....	Gasket.....		
A10	1				697104	Skruv.....	Screw.....		
A11	1				697113	Ventilationsrör.....	Breather tube.....		
A12	1				697124	Ventil.....	Breather reed.....		
A13	1				692012	Regulatoraxel.....	Governor crank.....		
A14	2				691691	Bricka.....	Washer.....		
A15	1				691620	Låsnål.....	Cotter pin.....		
A17	1				691909	Tändstiftshylsa.....	Spark plug boot.....		
A18	1				9400-0244-00	Tändstift.....	Spark plug.....		
A19	1				89838	Tändstiftsnyckel.....	Spark plug wrench.....		
A20	1				697359	Cylinderskydd.....	Cylinder shield.....		
A21	1				691003	Skruv.....	Screw.....		
A22	1				699016	Kamaxel.....	Camshaft.....		
A23	1				691968	Oljekastardrev.....	Oil slinger.....		
A24	1				690946	Avtappningsplugg.....	Oil drain plug.....		
A25	10				692125	Skruv.....	Screw.....		
A26	1				690947	• Tätningsring.....	• Oil seal.....		
A27	1				697110	• Packning.....	• Gasket.....		
A28	1				697106	Oljesump.....	Engine sump.....		
B01	1				698375	• Kolvringssats.....	• Ring set.....		
B01	1				698377	• Kolvringssats.....	• Ring set.....		
B02	1				698371	Kolv kpl.....	Piston assy.....		
B02	1				698373	Kolv kpl.....	Piston assy.....		
B03	2				698469	• Låsring.....	• Lock.....		
B04	1				697390	Vevaxel.....	Crankshaft.....		
B05	1				697128	• Drev.....	• Timing gear.....		
B06	1				691639	• Kil.....	• Timing key.....		
B07	1				222698	Kil.....	Key.....		
B08	1				697364	Vevstake.....	Connecting rod.....		
B09	2				692852	• Skruv.....	• Screw.....		
B10	1				697099	Kolvbult.....	Piston pin.....		
B11	1				697391	Motvikt.....	Counterweight.....		
B12	1				697392	• Axel.....	• Pin.....		
B13	1				697607	• Länk.....	• Link.....		
B14	2				697156	• Plugg.....	• Plug.....		
B15	1				697611	Oljesticka kpl.....	Oil dipstick assy.....		
B16	1				697086	• Oljesticka.....	• Oil dipstick.....		
B17	1				691031	• • O- ring.....	• • O- ring.....		
B18	1				697184	• Oljerör.....	• Dipstick tube.....		
B19	1				691032	• • Tätning.....	• • Tube seal.....		
B20	1				698139	Skruv.....	Screw.....		

A



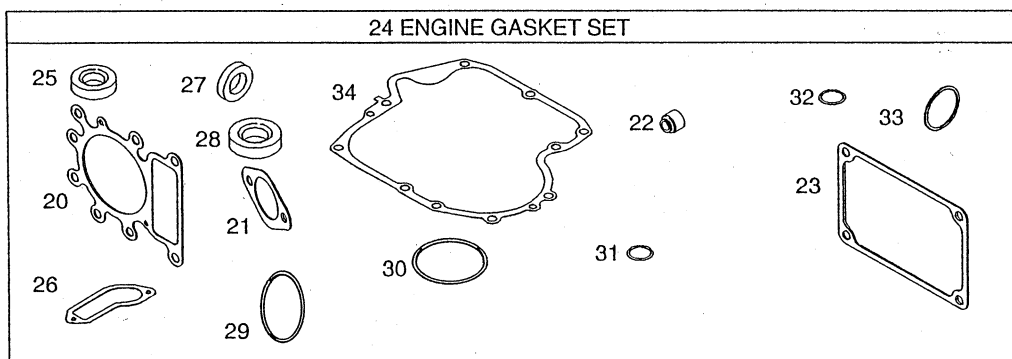
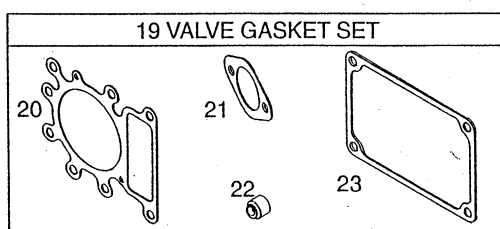
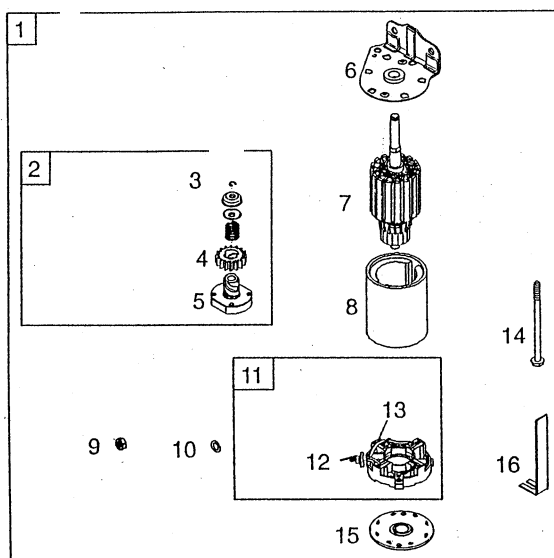
Utgåva Issue 2004- 13		Bildnr Picture No 1682		BRIGGS & STRATTON 21A907 TOPPLOCK (A)		BRIGGS & STRATTON 21A907 CYLINDER HEAD (A)		Sida Page 198	
Pos. Fig.	Antal/Quantity				Art nr Part No	Benämning	Description	Sats Kit	Anmärkning Notes
	21A 907- 0146								
A01	1				697396	Topplöck .....	Cylinder head .....		
A02	1				691843	• Ventilhuv .....	• Valve cap .....		
A03	1				691279	• Ventilfjäder .....	• Valve spring .....		
A04	1				691279	• Ventilfjäder .....	• Valve spring .....		
A05	1				495856	• Ventil- utblås .....	• Valve-exhaust .....		
A06	2				499586	• Ventilhållare .....	• Valve keeper .....		
A07	2				690964	• Ventilhållare .....	• Valve retainer .....		
A08	1				495857	• Ventil- insug .....	• Valve-intake .....		
A09	1				690968	• Ventiltätning .....	• Valve seal .....		
A10	2				691986	• Vipparmsjustering .....	• Rocker arm adjuster .....		
A11	2				691751	• Vipparm .....	• Rocker arm .....		
A12	2				691095	• Pinnbult .....	• Stud .....		
A13	1				690822	• Stötstångsstyrning .....	• Push rod guide .....		
A14	1				272475	• Packning .....	• Gasket .....		
A15	1				273280	• Topplöckspackning .....	• Cylinder head gasket .....		
A16	1				692138	• O- ring .....	• O- ring .....		
A17	1				692492	Ventilkåpa .....	Rocker cover .....		
A18	4				691108	Skruv .....	Screw .....		
A19	1				692137	• Packning .....	• Gasket .....		
A20	1				697361	Insugningsrör .....	Intake manifold .....		
A21	2				691148	Skruv .....	Screw .....		
A22	1				697394	Stötstång (insug) .....	Push rod (intake) .....		
A22	1				697395	Stötstång (utblås) .....	Push rod (exhaust) .....		
A23	2				690564	Ventillyftare .....	Valve tappet .....		
A24	8				690360	Skruv .....	Screw .....		

A

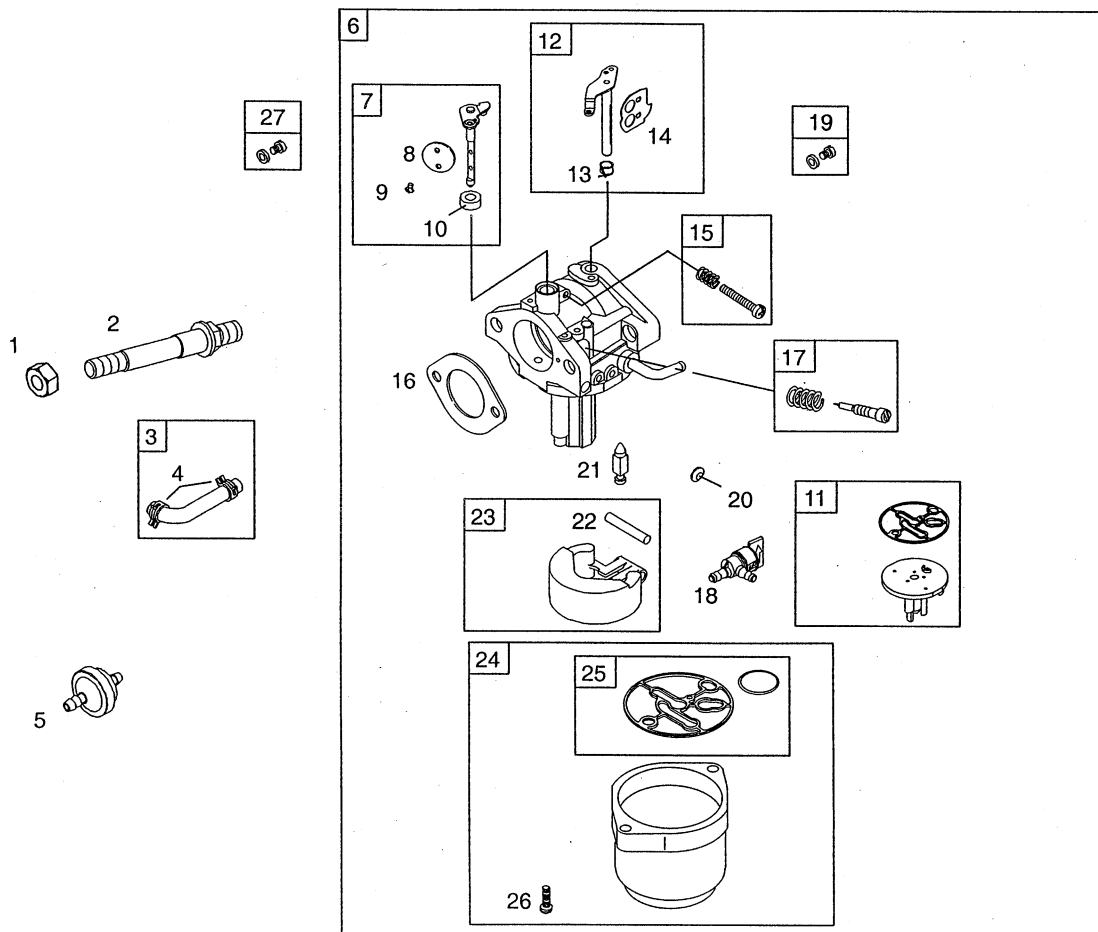


Utgåva Issue  2004- 13		Bildnr Picture No  1693		BRIGGS & STRATTON 21A907 REGULATOR (A) FLÄKTHUS (A)		BRIGGS & STRATTON 21A907 GOVERNOR (A) BLOWER HOUSING (A)		Sida Page  200	
Pos. Fig.	Antal/Quantity				Art nr Part No	Benämning	Description	Sats Kit	Anmärkning Notes
	21A 907- 0146								
A01	2				691693	Skruv .....	Screw .....		
A02	1				694042	Reglageplåt.....	Control bracket .....		
A03	1				691024	Klämma .....	Clamp.....		
A04	1				690804	Skruv .....	Screw .....		
A05	1				692208	Fjäder.....	Spring .....		
A06	1				691374	Regulatorarm.....	Governor lever .....		
A07	1				691119	• Bult .....	• Bolt .....		
A08	1				691251	• Mutter.....	• Nut .....		
A09	1				696457	Generator.....	Alternator .....		
A10	4				691183	Skruv .....	Screw .....		
A11	1				393537	• Anslutning .....	• Connector .....		
A12	1				698516	• Skruv/bricka .....	• Screw/washer kit.....		
A13	2				691061	Skruv .....	Screw .....		
A14	1				492341	Tändsystem .....	Armature magneto .....		
A15	1				493880	• Anslutningshylsa .....	• Terminal .....		
A16	1				694123	Kabelklämma .....	Wire clip.....		
A17	1				697089	Kabel .....	Stop wire.....		
A18	1				697088	Skruv .....	Screw .....		
A19	1				691188	Regulator.....	Regulator .....		
A20	1				691841	Regulatorlänk .....	Governor link .....		
A21	1				691842	Fjäder.....	Spring .....		
A22	1				691840	Chokelänk.....	Choke link .....		
A24	2				691003	Skruv .....	Screw .....		
A25	1				697352	Skydd .....	Guard .....		
A26	1				398808	Kortslutningskabel.....	Ground wire .....		
A27	1				691972	Isolator .....	Insulator.....		
A28	4				697897	Skruv .....	Screw .....		
A29	1				697133	Roterande skydd.....	Rotating screen .....		
A30	2				697102	Skruv .....	Screw .....		
A31	2				690372	Skruv .....	Screw .....		
A32	1				699044	Fläkt.....	Fan .....		
A33	1				698282	Svänghjul.....	Flywheel .....		
A34	1				19203	Avdragare .....	Puller .....		
A35	1				697122	Insugningsrör .....	Intake elbow.....		
A36	1				691917	• O- ring.....	• O- ring .....		
A37	1				697123	• O- ring.....	• O- ring .....		
A38	1				698368	Platta .....	Trim plate.....		
A39	1				697870	Fläkthus .....	Blower housing .....		
A40	1				697420	• Lock.....	• Cover.....		
A41	1				697419	• Spärr.....	• Latch.....		
A42	1				698413	• Luftfilter.....	• Air cleaner filter.....		
A43	1				697103	Skruv .....	Screw .....		
A44	1				697292	• Förfilter .....	• Precleaner filter.....		
A45	1				697155	• Hållare .....	• Retainer.....		
A46	1				691612	Mutter.....	Nut .....		
A47	1				691077	Bricka .....	Washer.....		
A48	1				691084	Anslutningsbleck .....	Ground terminal .....		

A



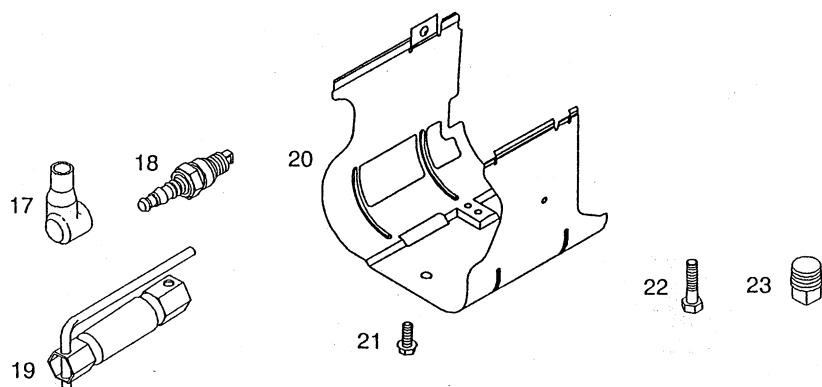
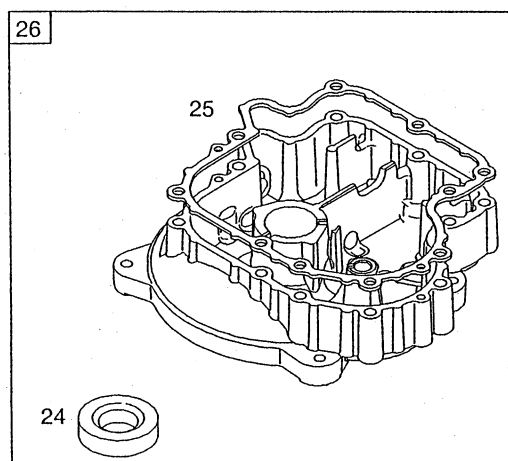
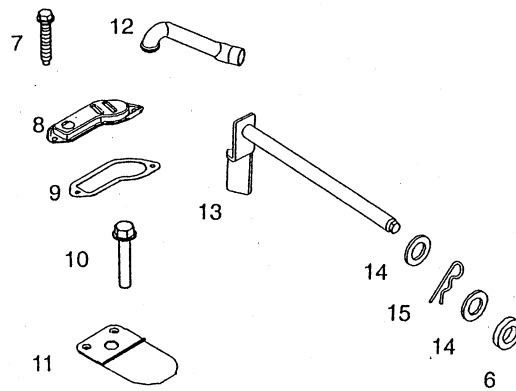
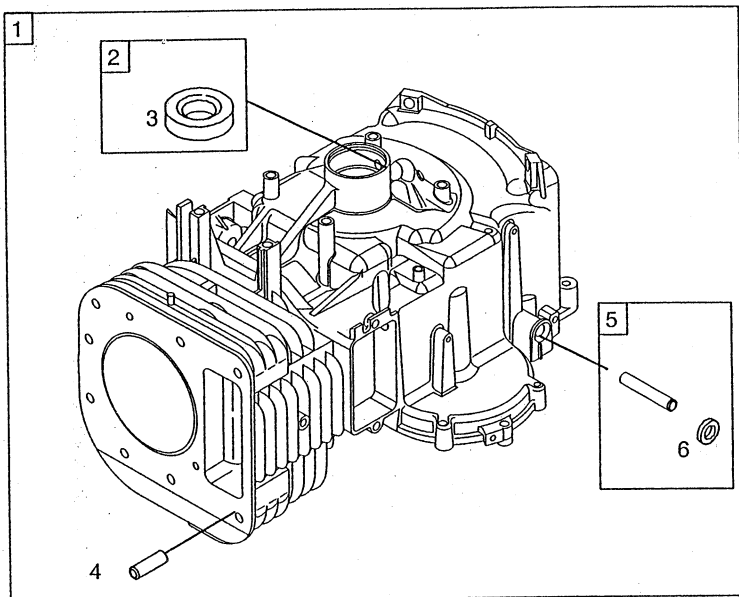
Utgåva Issue  2004- 13		Bildnr Picture No  1684		BRIGGS & STRATTON 21A907 STARTMOTOR (A) PACKNINGSSATS (A)		BRIGGS & STRATTON 21A907 STARTER MOTOR (A) GASKET SET (A)		Sida Page  202	
Pos. Fig.	Antal/Quantity				Art nr Part No	Benämning	Description	Sats Kit	Anmärkning Notes
	21A 907- 0146								
A01	1				693551	Startmotor kpl .....	Starter motor assy .....		
A02	1				693699	• Startdrev .....	• Starter drive .....		
A03	1				691265	• Låsring .....	• Retaining ring .....		
A04	1				693713	• Drev .....	• Pinion gear .....		
A05	1				692024	• Koppling .....	• Drive clutch .....		
A06	1				691283	• Lock .....	• Drive cap .....		
A07	1				692034	• Rotor .....	• Armature .....		
A08	1				693757	• Startmotorhus .....	• Starter housing .....		
A09	1				691029	• Mutter .....	• Nut .....		
A10	1				691261	• Bricka .....	• Washer .....		
A11	1				691293	• Borsthållare .....	• Brush retainer .....		
A12	1				693167	• Mutter .....	• Nut .....		
A13	1				497608	• Släpksats .....	• Brush set .....		
A14	2				690323	• Bult .....	• Bolt .....		
A15	1				691286	• Botten .....	• End cap .....		
A16	1				691532	• Stag .....	• Strap .....		
A17	1				691224	Kabelklämma .....	Wire clip .....		
A18	1				690372	Skruv .....	Screw .....		
A19	1				691581	Packningssats- ventil .....	Gasket set- valve .....		
A20	1				273280	• Topplöckspackning .....	• Cylinder head gasket .....		
A21	1				692137	• Packning .....	• Gasket .....		
A22	1				690968	• Ventiltätning .....	• Valve seal .....		
A23	1				272475	• Packning .....	• Gasket .....		
A24	1				697151	Packningssats- motor .....	Gasket set- engine .....		
A25	1				391086	• Tätningsring .....	• Seal .....		
A26	1				697109	• Packning .....	• Gasket .....		
A27	1				692407	• Tätning .....	• Seal .....		
A28	1				690947	• Tätningsring .....	• Oil seal .....		
A29	1				691917	• O- ring .....	• O- ring .....		
A30	1				697123	• O- ring .....	• O- ring .....		
A31	1				691032	• Tätning .....	• Tube seal .....		
A32	1				691031	• O- ring .....	• O- ring .....		
A33	1				692138	• O- ring .....	• O- ring .....		
A34	1				697110	• Packning .....	• Gasket .....		



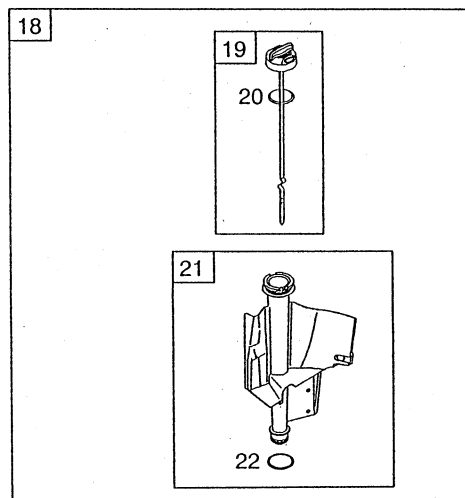
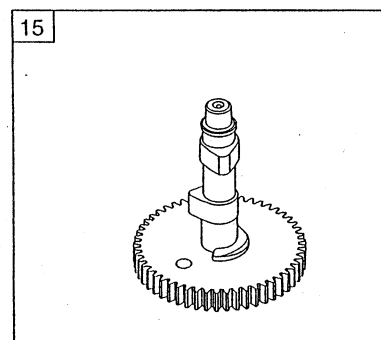
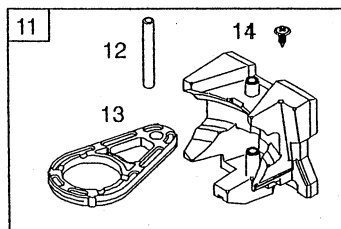
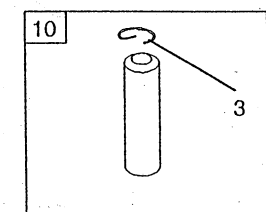
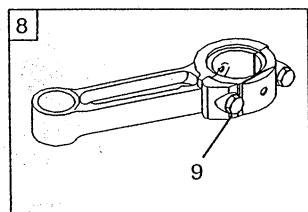
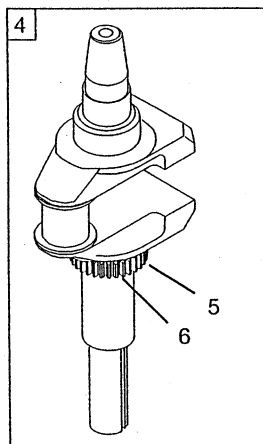
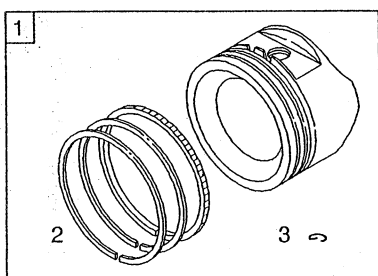
28 CARBURETOR OVERHAUL KIT			
16	30	29	20
9	31	13	25
22		10	
21			

Utgåva Issue  2004- 13		Bildnr Picture No  1694		BRIGGS & STRATTON 21A907 FÖRGASARE (A) PACKNINGSSATS (A)		BRIGGS & STRATTON 21A907 CARBURETTOR (A) GASKET SET (A)		Sida Page  204	
Pos. Fig.	Antal/Quantity				Art nr Part No	Benämning	Description	Sats Kit	Anmärkning Notes
	21A 907- 0146								
A01	2				690958	Mutter.....	Nut .....		Standard
A02	2				690227	Pinnbult .....	Stud .....		
A03	1				697098	Bränsleslang .....	Fuel line.....		
A04	2				95162	• Slangklämma.....	• Hose clamp .....		
A05	1				394358	Bränslefilter .....	Fuelfilter .....		
A06	1				699896	Förgasare kpl .....	Carburettor assy .....		
A07	1				698776	• Spjällaxel .....	• Throttle shaft.....		
A08	1				698774	•• Gasspjäll .....	•• Throttle valve.....		
A09	2				690718	•• Skruv .....	•• Screw .....		
A10	1				698777	•• Tätning.....	•• Seal .....		
A11	1				698780	• Rör .....	• Transfer tube .....		
A12	1				698778	• Chokeyaxel .....	• Choke shaft .....		
A13	1				698779	•• Fjäder/tätning.....	•• Spring/seal .....		
A14	1				698773	•• Chokespjäll .....	•• Choke valve .....		
A15	1				695408	• Tomgångsskruv .....	• Idle speed kit .....		
A16	1				692137	• Packning.....	• Gasket .....		
A17	1				695425	• Justerskruv.....	• Idle mixture kit .....		
A18	1				698183	• Bränslekran.....	• Fuel shut- off valve .....		
A19	1				699897	• Huvudmunstycke .....	• Main jet .....		
A20	1				690727	• Expansionsplugg .....	• Welch plug .....		
A21	1				696136	• Nålventil.....	• Needle valve .....		
A22	1				694918	•• Flottöraxel .....	•• Float hinge pin.....		
A23	1				694914	• Flottör.....	• Float .....		
A24	1				698783	• Flottörhus .....	• Float bowl.....		
A25	1				698781	•• Packning .....	•• Gasket .....		
A26	2				695407	•• Skruv .....	•• Screw .....		
A27	1				699898	Huvudmunstycke .....	Main jet .....		
A28	1				698787	Rep.sats- förgasare.....	Overhaul kit- carbur .....		
A29	1				692138	• O- ring.....	• O- ring .....		
A30	1				691917	• O- ring.....	• O- ring .....		
A31	1				697123	• O- ring.....	• O- ring .....		
									High altitude

A



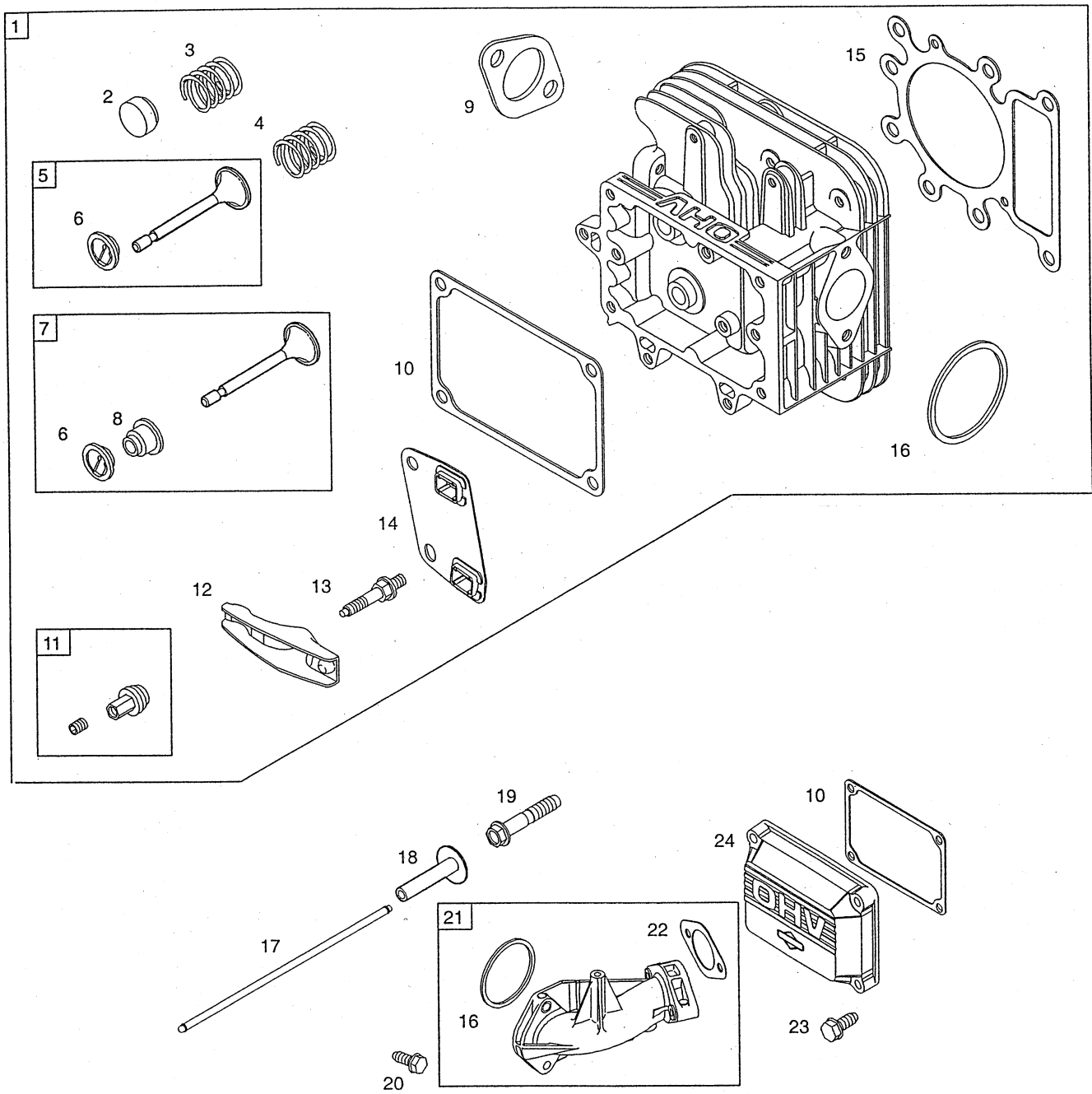
B



Utgåva Issue		Bildnr Picture No		BRIGGS & STRATTON 282H07 CYLINDER (A) VEVAXEL (B)		BRIGGS & STRATTON 282H07 CYLINDER (A) CRANKSHAFT (B)		Sida Page  206	
Pos. Fig.	Antal/Quantity				Art nr Part No	Benämning	Description	Sats Kit	Anmärkning Notes
	282 H07- 0111								
A01	1				697132	Cylinder kpl.....	Cylinder assy.....		Standard .020" oversize Standard .020" oversize
A02	1				399265	• Bussning.....	• Bushing.....		
A03	1				391086	• • Tätningsring.....	• • Seal.....		
A04	1				690959	• Tapp.....	• Locating pin.....		
A05	1				697144	• Bussning.....	• Bushing.....		
A06	1				692407	• • Tätning.....	• • Seal.....		
A07	2				697157	Skruv.....	Screw.....		
A08	1				697112	Lock.....	Cover.....		
A09	1				697109	Packning.....	Gasket.....		
A10	2				697104	Skruv.....	Screw.....		
A11	1				697124	Ventil.....	Breather reed.....		
A12	1				697113	Ventilationsrör.....	Breather tube.....		
A13	1				692012	Regulatoraxel.....	Governor crank.....		
A14	2				691691	Bricka.....	Washer.....		
A15	1				691620	Låsnål.....	Cotter pin.....		
A17	1				691909	Tändstiftshylsa.....	Spark plug boot.....		
A18	1				9400- 0244- 00	Tändstift.....	Spark plug.....		
A19	1				89838	Tändstiftsnyckel.....	Spark plug wrench.....		
A20	1				697107	Skydd.....	Cylinder shield.....		
A21	1				691003	Skruv.....	Screw.....		
A22	10				692125	Skruv.....	Screw.....		
A23	1				690946	Avtappningsplugg.....	Oil drain plug.....		
A24	1				690947	• Tätningsring.....	• Oil seal.....		
A25	1				697110	• Packning.....	• Gasket.....		
A26	1				697106	Oljesump.....	Engine sump.....		
B01	1				698371	Kolv kpl.....	Piston assy.....		
B01	1				698394	Kolv kpl.....	Piston assy.....		
B02	1				698376	• Kolvringssats.....	• Ring set.....		
B02	1				698397	• Kolvringssats.....	• Ring set.....		
B03	2				698469	• Låsring.....	• Lock.....		
B04	1				697127	Vevaxel.....	Crankshaft.....		
B05	1				697128	• Drev.....	• Timing gear.....		
B06	1				691639	• Kil.....	• Timing key.....		
B07	1				222698	Kil.....	Key.....		
B08	1				697126	Vevstake.....	Connecting rod.....		
B09	2				692852	• Skruv.....	• Screw.....		
B10	1				697099	Kolvbult.....	Piston pin.....		
B11	1				697134	Motvikt.....	Counterweight.....		
B12	1				697392	• Axel.....	• Pin.....		
B13	1				697607	• Länk.....	• Link.....		
B14	1				697156	• Plugg.....	• Plug.....		
B15	1				698492	Kamaxel.....	Camshaft.....		
B17	1				691968	Oljekastardrev.....	Oil slinger.....		
B18	1				697611	Oljesticka kpl.....	Oil dipstick assy.....		
B19	1				697086	• Oljesticka.....	• Oil dipstick.....		
B20	1				691031	• • O- ring.....	• • O- ring.....		
B21	1				697184	• Oljerör.....	• Dipstick tube.....		
B22	1				691032	• • Tätning.....	• • Tube seal.....		

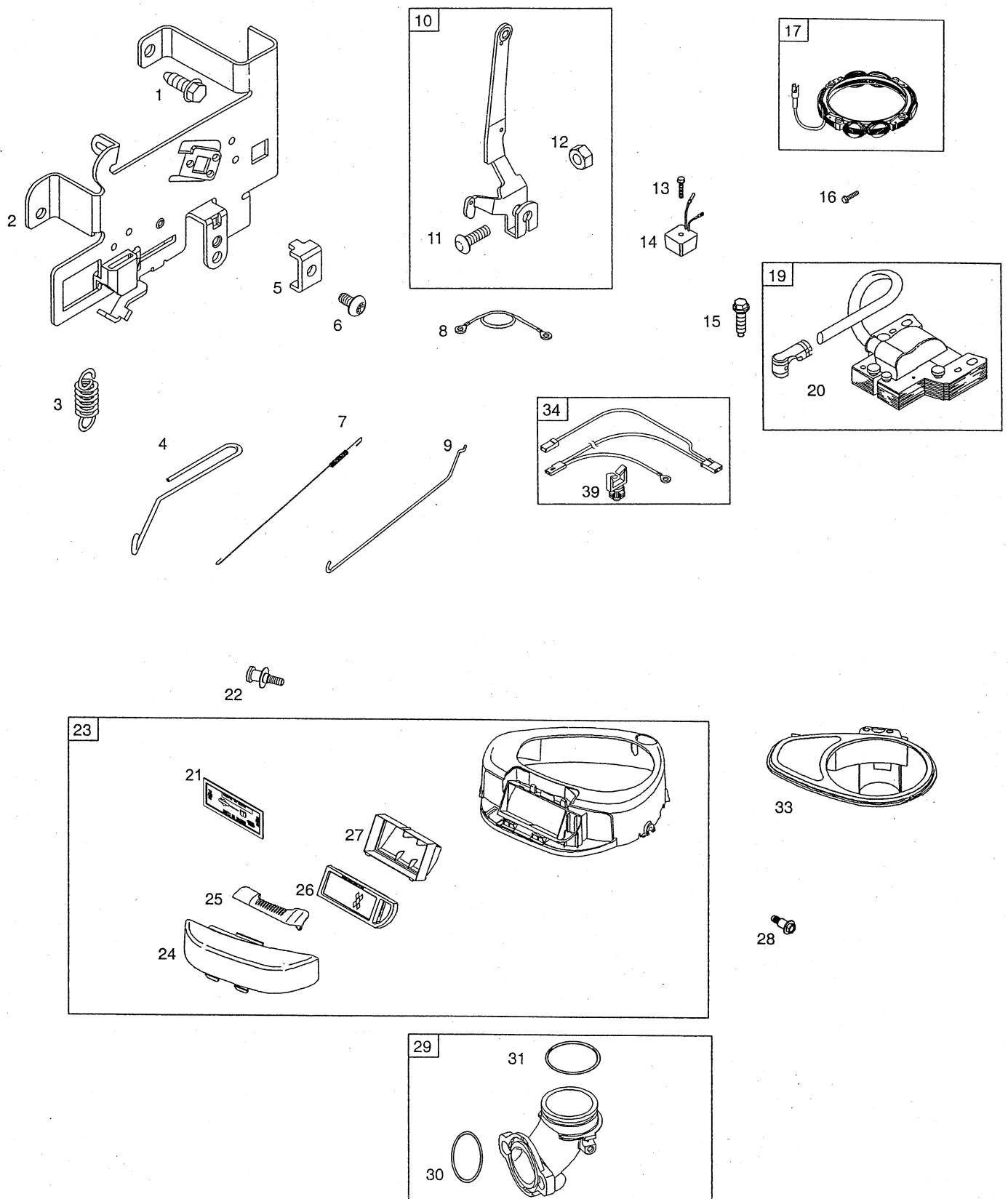
X

A



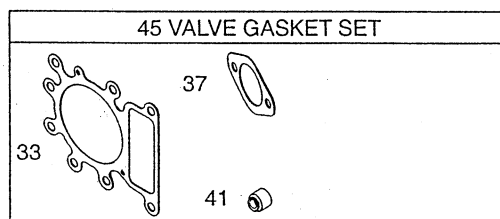
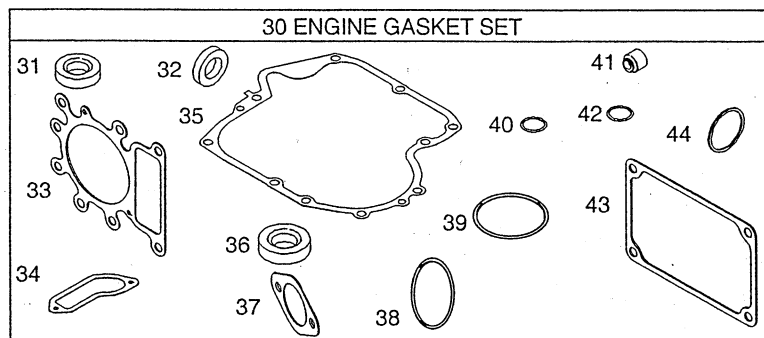
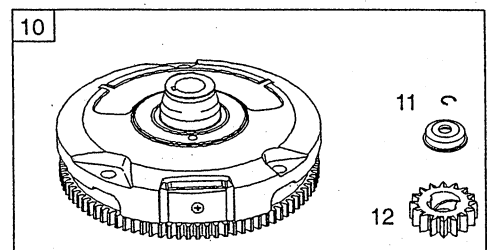
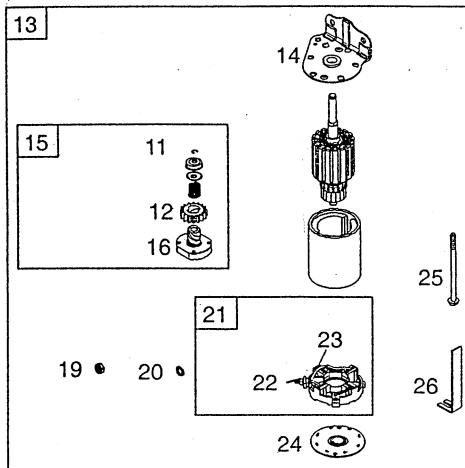
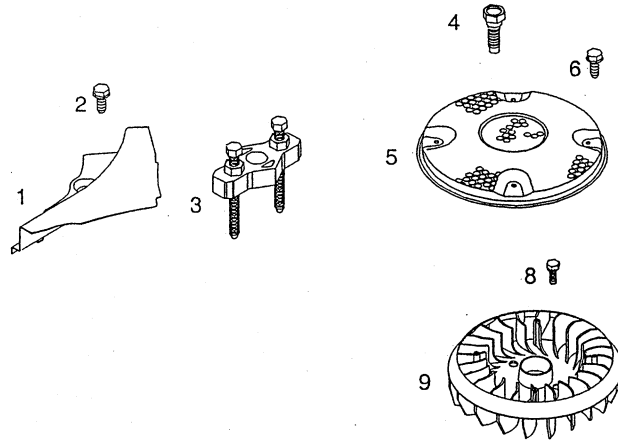
Utgåva Issue 2004- 13		Bildnr Picture No 1582		BRIGGS & STRATTON 282H07 TOPPLOCK (A)		BRIGGS & STRATTON 282H07 CYLINDER HEAD (A)		Sida Page 208	
Pos. Fig.	Antal/Quantity				Art nr Part No	Benämning	Description	Sats Kit	Anmärkning Notes
	282 H07- 0111								
A01	1				698148	Topplöck kpl .....	Cylinder head assy .....		
A02	1				691843	• Ventilhuv .....	• Valve cap .....		
A03	1				691279	• Ventiltfjäder .....	• Valve spring .....		
A04	1				691279	• Ventiltfjäder .....	• Valve spring .....		
A05	1				695760	• Utblåsningsventil .....	• Exhaust valve .....		
A06	2				691752	• Ventilåållare .....	• Valve retainer .....		
A07	1				695761	• Insugningsventil .....	• Intake valve .....		
A08	1				690968	• Ventiltåtning .....	• Valve seal .....		
A09	1				692236	• Packning .....	• Gasket .....		
A10	1				272475	• Packning .....	• Gasket .....		
A11	2				691986	• Vipparmsjustering .....	• Rocker arm adjuster .....		
A12	2				691751	• Vipparm .....	• Rocker arm .....		
A13	2				691095	• Pinnbult .....	• Stud .....		
A14	1				690822	• Stötstångsstyrning .....	• Push rod guide .....		
A15	1				273280	• Topplöckspackning .....	• Cylinder head gasket .....		
A16	1				692138	• O- ring .....	• O- ring .....		
A17	1				692003	Stötstång- insug .....	Push rod- intake .....		
A17	1				692011	Stötstång- utblås .....	Push rod- exhaust .....		
A18	2				690564	Ventillyftare .....	Valve tappet .....		
A19	8				690360	Skruv .....	Screw .....		
A20	2				691148	Skruv .....	Screw .....		
A21	1				690193	Insugningsrör .....	Intake manifold .....		
A22	1				692137	• Packning .....	• Gasket .....		
A23	4				691108	Skruv .....	Screw .....		
A24	1				692492	Ventilkåpa .....	Rocker cover .....		

A



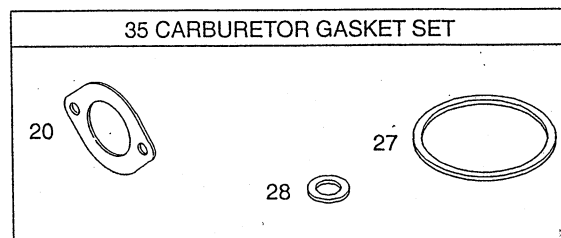
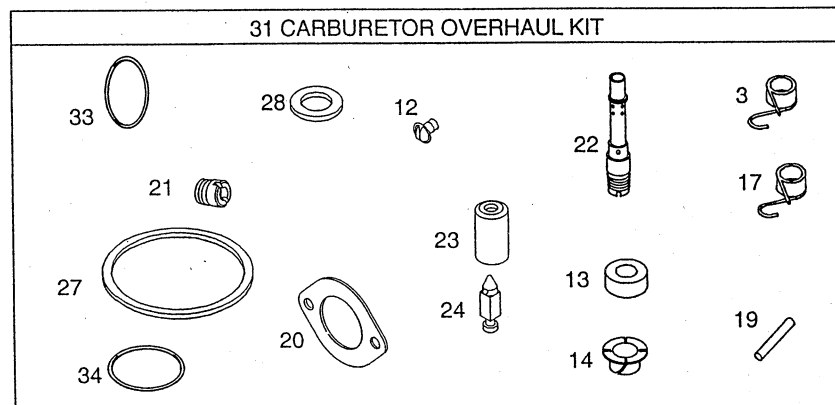
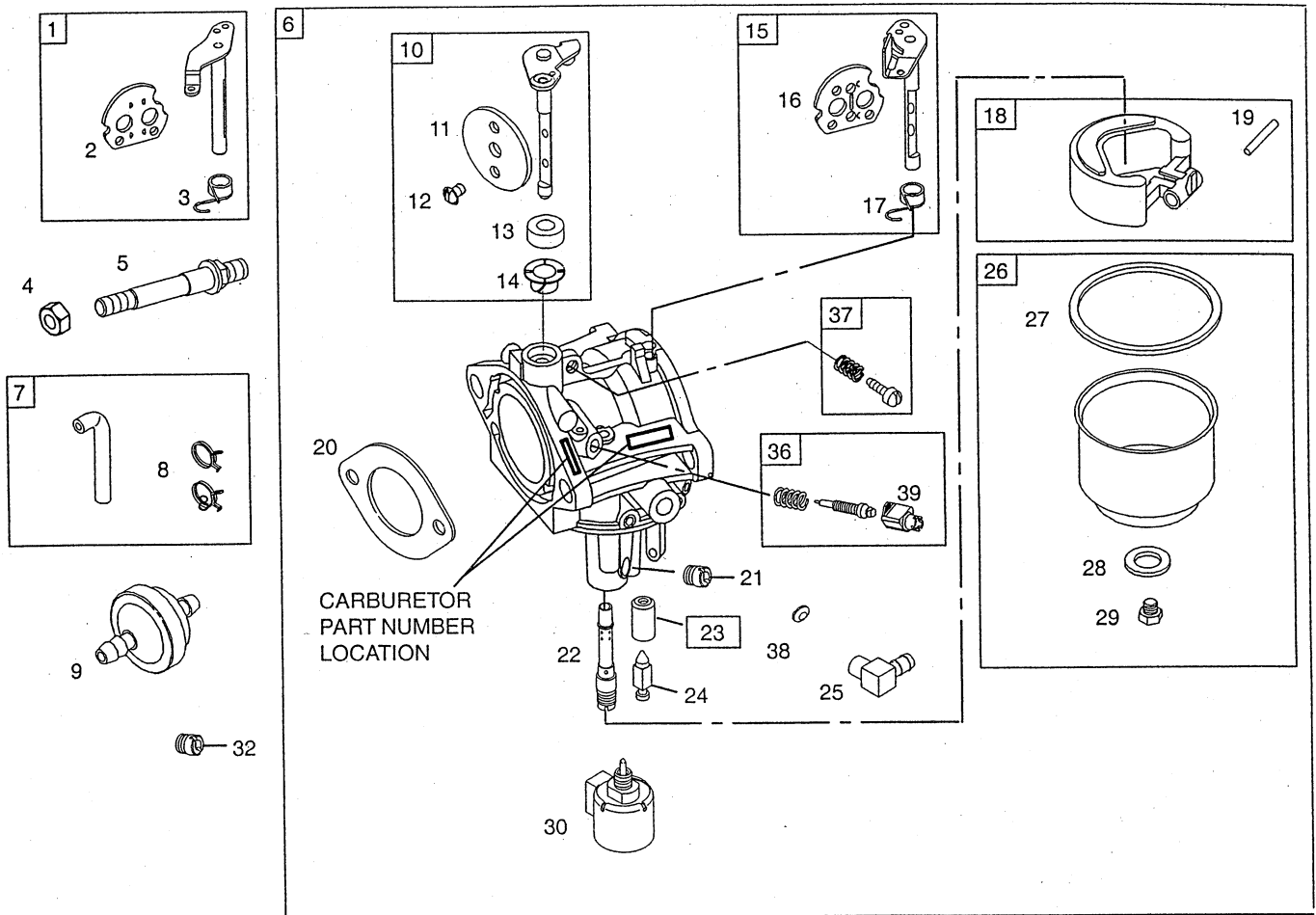
Utgåva Issue  2004- 13		Bildnr Picture No  1696		BRIGGS & STRATTON 282H07 REGULATOR (A) FLÄKTHUS (A)		BRIGGS & STRATTON 282H07 GOVERNOR (A) BLOWER HOUSING (A)		Sida Page  210	
Pos. Fig.	Antal/Quantity				Art nr Part No	Benämning	Description	Sats Kit	Anmärkning Notes
	282 H07- 0111								
A01	2				691693	Skruv .....	Screw .....		
A02	1				694042	Reglageplåt .....	Control bracket .....		
A03	1				691795	Regulatorfjäder .....	Governor spring .....		
A04	1				691840	Chokelänk .....	Choke link .....		
A05	1				691024	Klämma .....	Clamp .....		
A06	1				690804	Skruv .....	Screw .....		
A07	1				691842	Fjäder .....	Spring .....		
A08	1				697089	Kabel .....	Stop wire .....		
A09	1				691841	Regulatorlänk .....	Governor link .....		
A10	1				691374	Regulatorarm .....	Governor lever .....		
A11	1				691119	• Bult .....	• Bolt .....		
A12	1				691251	• Mutter .....	• Nut .....		
A13	1				697088	Skruv .....	Screw .....		
A14	1				691188	Regulator .....	Regulator .....		
A15	2				691061	Skruv .....	Screw .....		
A16	4				691183	Skruv .....	Screw .....		
A17	1				696457	Generator .....	Alternator .....		
A19	1				492341	Tändsystem .....	Armature magneto .....		
A20	1				692424	• Anslutningskontakt .....	• Terminal .....		
A21	1				697015	Förfilter .....	Pre cleaner filter .....		
A22	1				697102	Skruv .....	Screw .....		
A23	1				698402	Fläkt hus kpl .....	Blower housing assy .....		
A24	1				698403	• Lock .....	• Cover .....		
A25	1				697575	• Spärr .....	• Latch .....		
A26	1				698083	• Filter .....	• Filter .....		
A27	1				698401	• Hållare .....	• Retainer .....		
A28	2				697103	Skruv .....	Screw .....		
A29	1				697122	Insugningsrör .....	Intake elbow .....		
A30	1				691917	• O- ring .....	• O- ring .....		
A31	1				697123	• O- ring .....	• O- ring .....		
A33	1				698368	Platta .....	Trim plate .....		
A34	1				692037	Kablage .....	Wiring harness .....		
A39	1				691224	• Kabelklämma .....	• Wire clip .....		

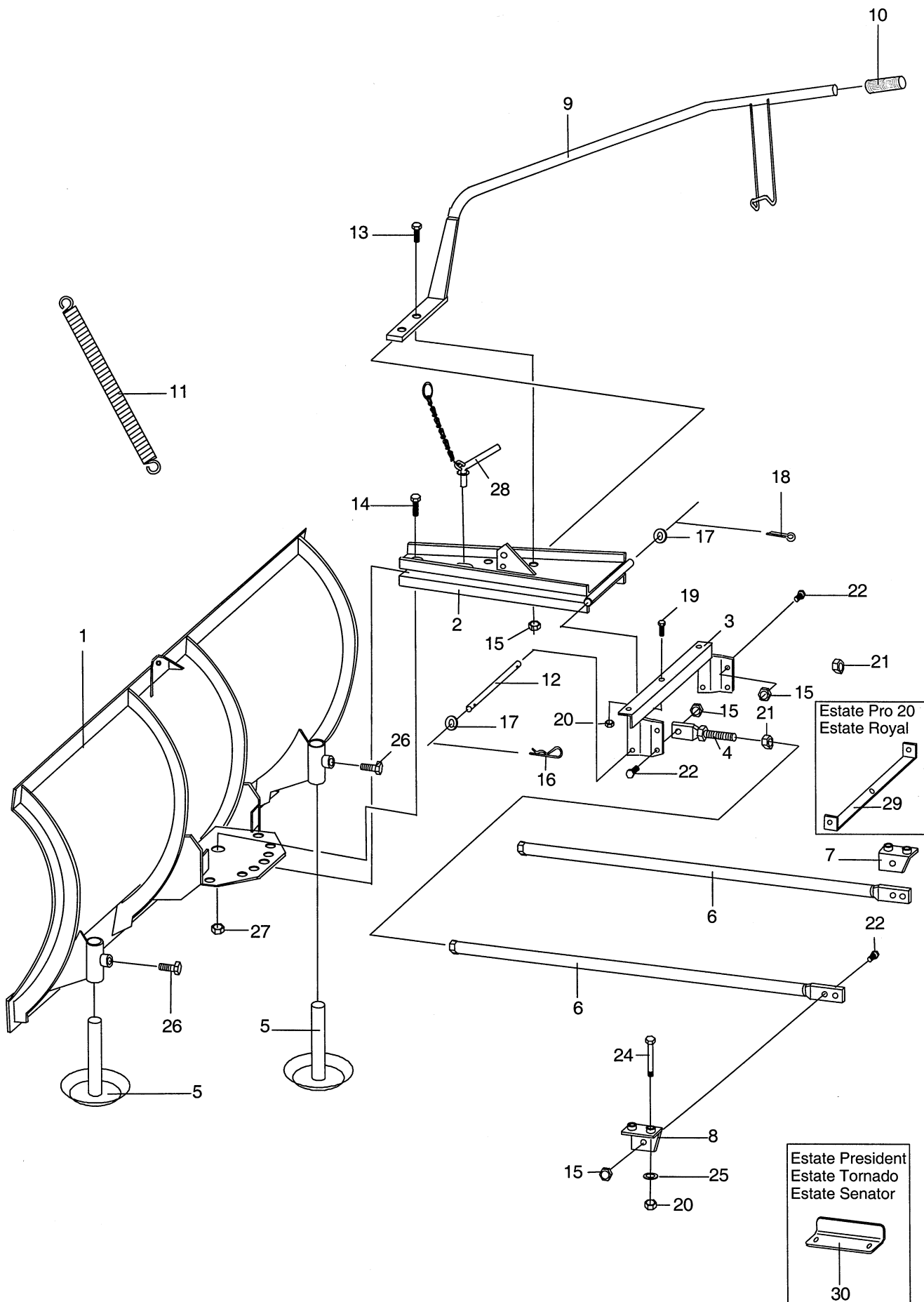
A



Utgåva Issue 2004- 13		Bildnr Picture No 1697		BRIGGS & STRATTON 282H07 STARTMOTOR (A) PACKNINGSSATS (A)		BRIGGS & STRATTON 282H07 STARTER MOTOR (A) GASKET SET (A)		Sida Page 212	
Pos. Fig.	Antal/Quantity				Art nr Part No	Benämning	Description	Sats Kit	Anmärkning Notes
	282 H07- 0111								
A01	1				697352	Skydd .....	Guard .....		
A02	1				691003	Skruv .....	Screw .....		
A03	1				19203	Avdragare .....	Puller .....		
A04	1				698139	Skruv .....	Screw .....		
A05	1				697133	Roterande skydd.....	Rotating screen.....		
A06	4				697897	Skruv .....	Screw .....		
A08	2				690372	Skruv .....	Screw .....		
A09	1				699043	Fläkt.....	Fan .....		
A10	1				693556	Svånghjul.....	Flywheel .....		
A11	1				691265	.. Låsring.....	.. Retaining ring.....		
A12	1				693713	.. Drev .....	.. Pinion gear .....		
A13	1				693552	Startmotor kpl .....	Starter motor assy .....		
A14	1				691283	• Lock.....	• Drive cap.....		
A15	1				693699	• Startdrev.....	• Starter drive .....		
A16	1				692024	.. Koppling .....	.. Drive clutch .....		
A19	1				691029	• Mutter.....	• Nut .....		
A20	1				691261	• Bricka .....	• Washer .....		
A21	1				691293	• Borsthållare .....	• Brush retainer .....		
A22	1				693167	.. Mutter .....	.. Nut .....		
A23	1				497608	.. Släpkolssats.....	.. Brush set.....		
A24	1				691286	• Botten .....	• End cap .....		
A25	2				691263	• Bult .....	• Bolt .....		
A26	1				691532	• Stag .....	• Strap .....		
A27	1				691224	Kabelklämma .....	Wire clip.....		
A28	2				690372	Skruv .....	Screw .....		
A29	1				694123	Kabelklämma .....	Wire clip.....		
A30	1				697151	Packningssats- motor .....	Gasket set- engine .....		
A31	1				391086	• Tätningsring .....	• Seal .....		
A32	1				692407	• Tätning .....	• Seal .....		
A33	1				273280	• Topplöckspackning .....	• Cylinder head gasket .....		
A34	1				697109	• Packning.....	• Gasket .....		
A35	1				697110	• Packning.....	• Gasket .....		
A36	1				690947	• Tätningsring .....	• Oil seal .....		
A37	1				692137	• Packning.....	• Gasket .....		
A38	1				691917	• O- ring.....	• O- ring .....		
A39	1				697123	• O- ring.....	• O- ring .....		
A40	1				691032	• Tätning .....	• Tube seal .....		
A41	1				690968	• Ventiltätning .....	• Valve seal .....		
A42	1				691031	• O- ring.....	• O- ring .....		
A43	1				272475	• Packning.....	• Gasket .....		
A44	1				692138	• O- ring.....	• O- ring .....		
A45	1				691581	Packningssats- ventil .....	Gasket set- valve .....		

A





Utgåva Issue  2004- 13		Bildnr Picture No  1453		SNÖBLAD (120 cm) ART.NR 13- 0924- 11		SNOW BLADE (120 cm) ART.NO 13- 0924- 11		Sida Page  168	
Pos. Fig.	Antal/Quantity				Art nr Part No	Benämning	Description	Sats Kit	Anmärkning Notes
	0924								
1	1				1319-1528-01	Blad .....	Blade .....		
2	1				1319-1812-01	Bladfäste .....	Blade holder .....		
3	1				1319-1816-01	Ram .....	Frame .....		
4	2				1319-1817-01	Skruv .....	Screw .....		
5	2				1319-1526-01	Släpsko .....	Skid .....		
6	2				1319-1818-01	Stag .....	Rod .....		
7	1				1319-1819-01	Stagfäste .....	Rod bracket .....		
8	1				1319-1820-01	Stagfäste .....	Rod bracket .....		
9	1				1319-1815-01	Lyftarm .....	Lift rod .....		
10	1				1319-1822-01	Handtag .....	Grip .....		
11	1				1319-1527-01	Fjäder .....	Spring .....		
12	1				1319-1821-01	Axel .....	Shaft .....		
13	2				9997-1030-16	Skruv .....	Screw .....		
14	1				1319-1551-01	Skruv .....	Screw .....		
15	8				9747-1031-02	Låsmutter .....	Lock nut .....		
16	1				1319-1692-01	Låsnål .....	Spring pin .....		
17	2				9699-0037-02	Bricka .....	Washer .....		
18	1				1319-1811-01	Saxpinne .....	Cotter pin .....		
19	3				9997-0816-16	Skruv .....	Screw .....		
20	7				9747-0831-02	Mutter .....	Lock nut .....		
21	2				9747-1031-02	Låsmutter .....	Lock nut .....		
22	6				9997-1025-16	Skruv .....	Screw .....		
24	4				9997-0880-16	Skruv .....	Screw .....		
25	4				9699-0028-02	Planbricka .....	Flat washer .....		
26	2				9997-1220-16	Skruv .....	Screw .....		
27	1				9747-1631-02	Låsmutter .....	Lock nut .....		
28	1				1319-1531-01	Sprint .....	Pin .....		
29	1				1319-1813-01	Monteringsfäste .....	Mounting plate .....		
30	1				1319-1814-01	Monteringsfäste .....	Mounting plate .....		