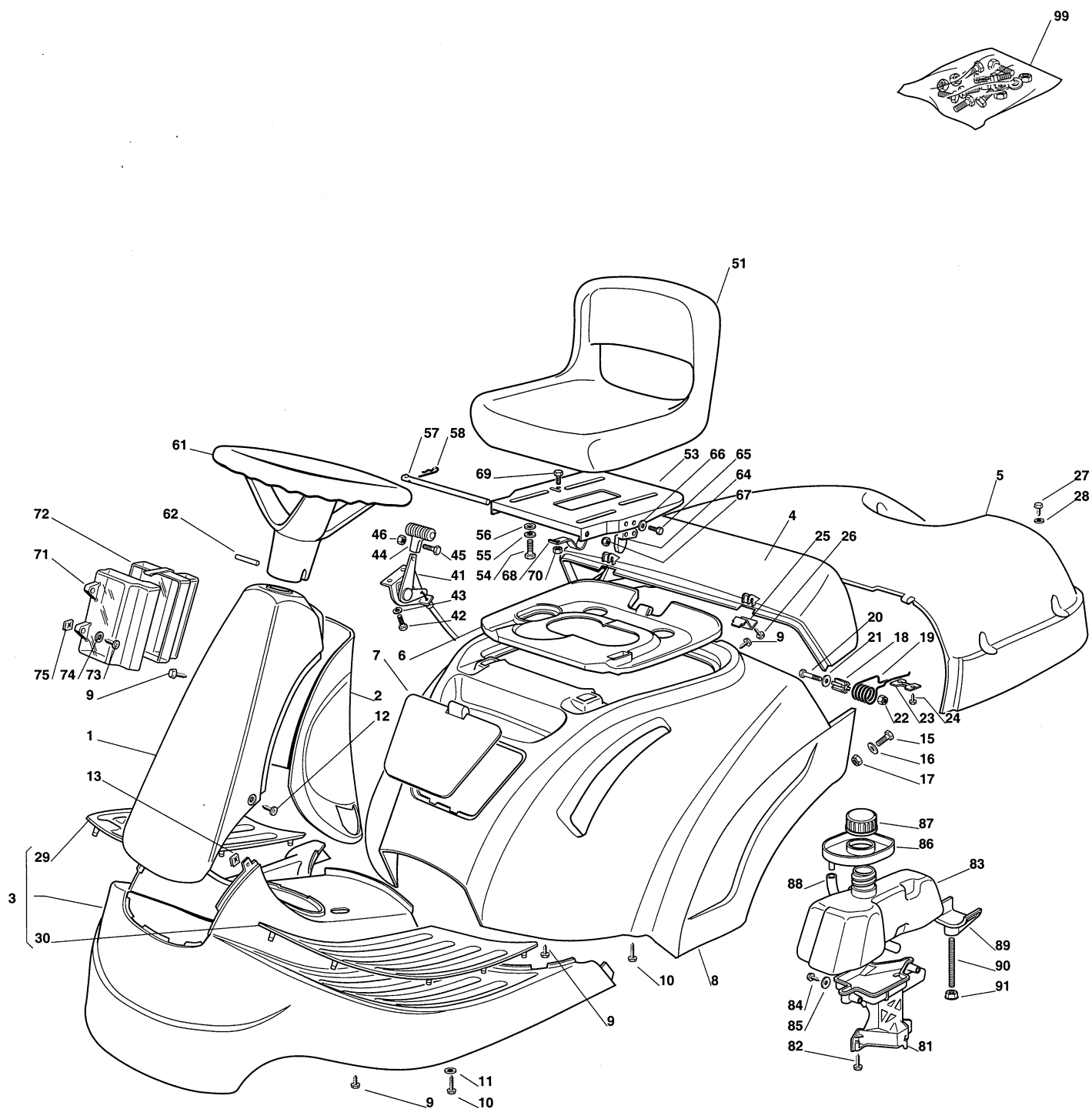


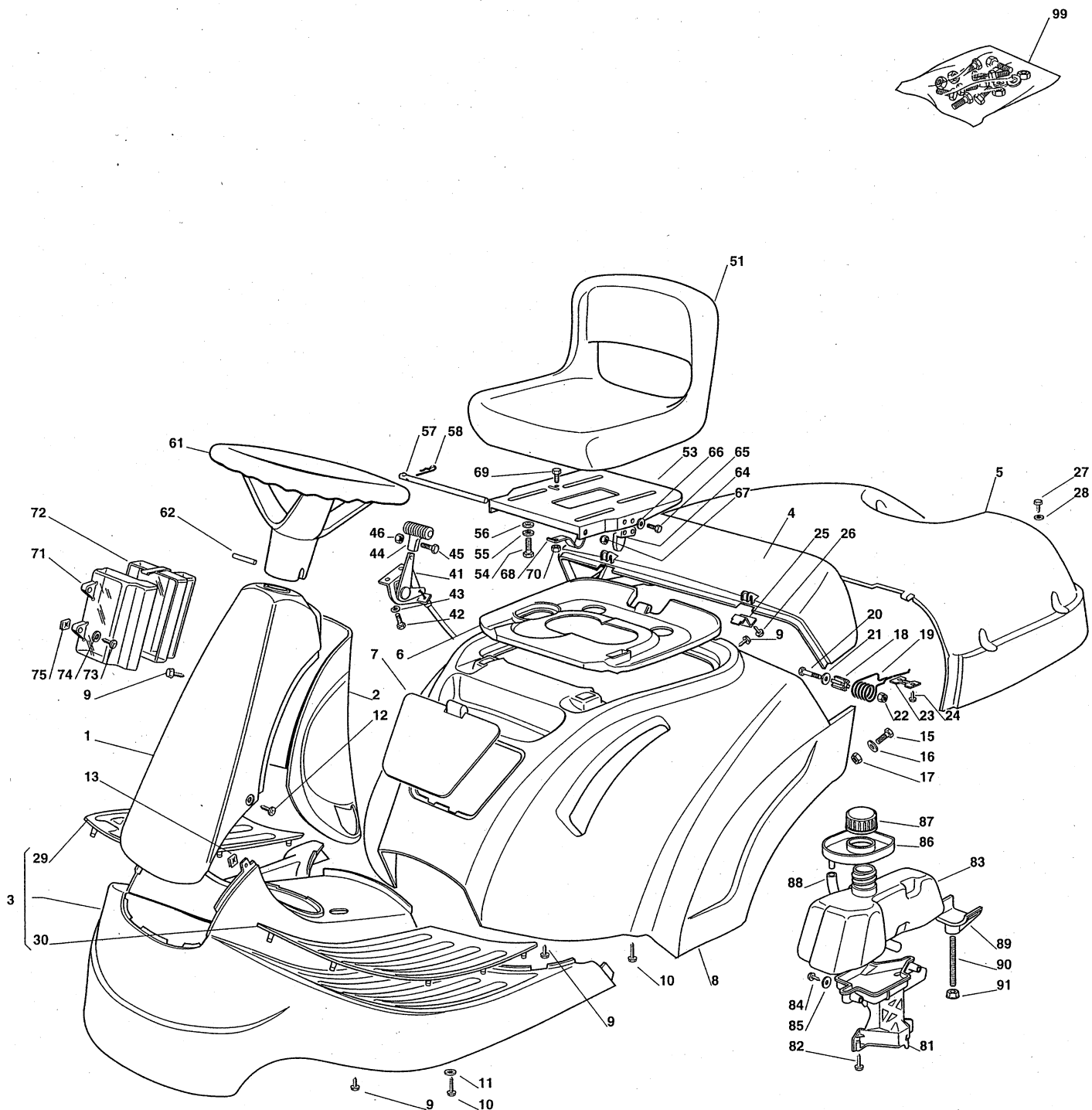
# Genuine Spare Parts

---

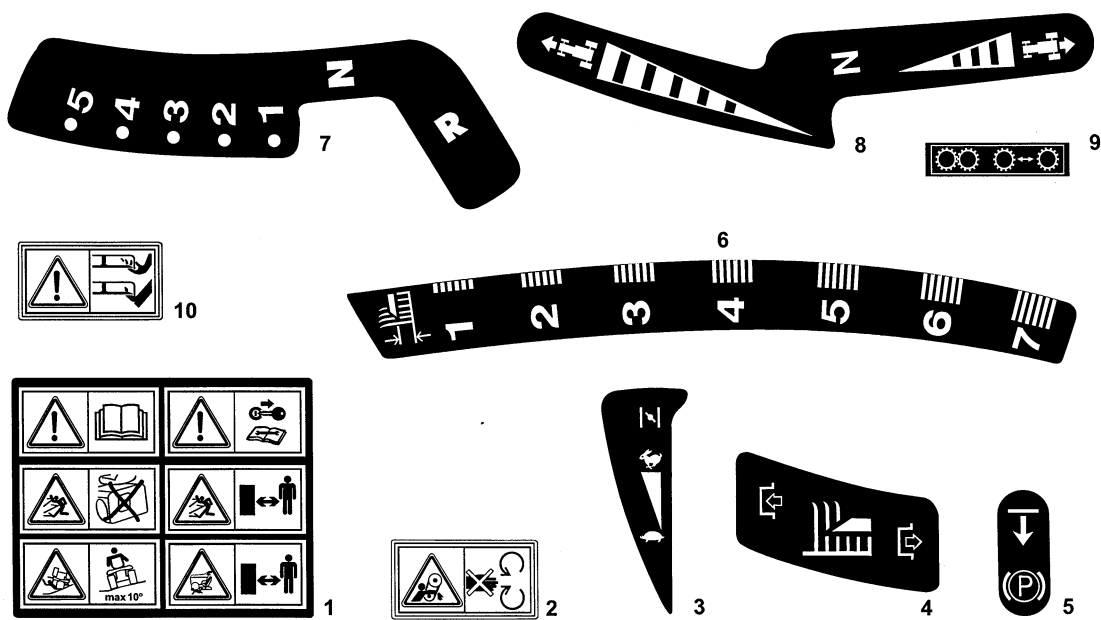




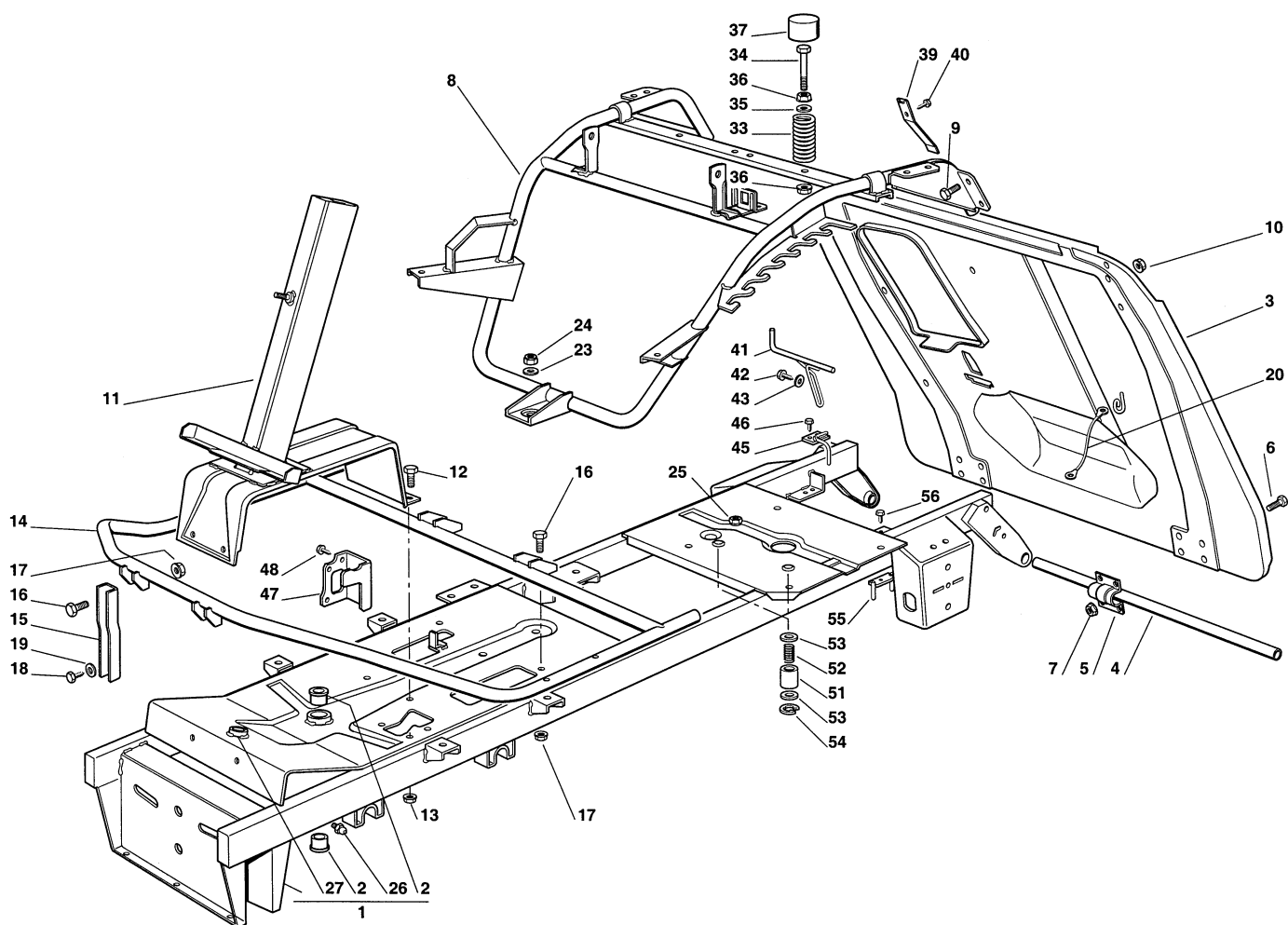
Utgåva Issue 2004- 13		Bildnr Picture No 1227B		GARDEN COMBI GARDEN COMBI HST KAROSS		GARDEN COMBI GARDEN COMBI HST BODY WORK		Sida Page 28	
Pos. Fig.	Antal/Quantity				Art nr Part No	Benämning	Description	Sats Kit	Anmärkning Notes
	2511	2512							
1	1	1			1136-0585-01	Kåpa-främre .....	Cover- front .....		Inkl. pos 29, 30
2	1	1			1136-0415-01	Kåpa- bakre .....	Cover- rear .....		
3	1	1			1136-0571-01	Fotstegskåpa .....	Footboard cover .....		
4	1	1			1136-0382-01	Uppsamlarlock- fast .....	Grass bag cover- fixed .....		
5	1	1			1136-0383-01	Uppsamlarlock- rörligt .....	Grass bag cover- mobil .....		
6	1	1			1136-0381-01	Motorlucka .....	Engine cover .....		
7	1	1			1136-0378-01	Frontlucka .....	Front cover .....		
8	1				1136-0572-01	Hjulkåpa .....	Wheel cover .....		
8		1			1136-1069-01	Hjulkåpa .....	Wheel cover .....		
9	10	10			9836-9618-12	Skruv .....	Screw .....		
10	8	8			9836-9635-12	Skruv .....	Screw .....		
11	4	4			9699-0060-02	Planbricka .....	Flat washer .....		
12	2	2			9941-0512-16	Skruv .....	Screw .....		
13	2	2			1136-0011-01	Låsplatta .....	Lock plate .....		
15	2	2			9997-0616-16	Skruv .....	Screw .....		
16	2	2			9699-0060-02	Planbricka .....	Flat washer .....		
17	2	2			9747-0631-02	Låsmutter .....	Lock nut .....		
18	2	2			1136-0375-01	Bussning .....	Bushing .....		
19	2	2			1136-0393-01	Fjäder .....	Spring .....		
20	2	2			9997-0845-12	Skruv .....	Screw .....		
21	2	2			1136-0014-01	Bricka .....	Washer .....		
22	2	2			9747-0831-02	Mutter .....	Lock nut .....		
23	2	2			1136-0404-01	Platta .....	Plate .....		
24	4	4			9836-9618-12	Skruv .....	Screw .....		
25	2	2			1136-0405-01	Plåt .....	Plate .....		
26	2	2			9836-9618-12	Skruv .....	Screw .....		
27	4	4			9847-8116-16	Skruv .....	Screw .....		
28	4	4			9699-0035-02	Planbricka .....	Flat washer .....		
29	1	1			1136-0379-01	• Fotstegsskydd- hö .....	• Footboard cover- RH .....		
30	1	1			1136-0380-01	• Fotstegsskydd- vä .....	• Footboard cover- LH .....		
41	1	1			1136-0556-01	Gasreglage .....	Throttle control .....		
42	2	2			9997-0412-16	Skruv .....	Screw .....		
43	2	2			9683-0010-02	Bricka .....	Washer .....		
44	1	1			1136-0192-01	Knopp .....	Handle .....		
45	1	1			9865-0412-16	Skruv .....	Screw .....		
46	1	1			9799-0431-02	Mutter .....	Nut .....		
51	1	1			1136-0315-01	Sits .....	Seat .....		
53	1	1			1136-0252-01	Sitsplatta .....	Seat plate .....		
54	4	4			9997-0820-16	• Skruv .....	• Screw .....		
55	4	4			9683-0030-02	• Låsbricka .....	• Lock washer .....		
56	4	4			9699-0056-02	• Planbricka .....	• Flat washer .....		
57	1	1			1136-1017-01	Axel .....	Pin .....		
58	1	1			1136-0095-01	Låsnål .....	Hair pin .....		
61	1	1			1136-0360-01	Ratt .....	Steering wheel .....		
62	1	1			9595-0272-00	• Stift .....	• Pin .....		
64	1	1			1136-0942-01	Kam .....	Cam .....		
65	2	2			1136-0820-01	Skruv .....	Screw .....		
66	2	2			9699-0018-02	Bricka .....	Washer .....		
67	2	2			9747-0531-02	Mutter .....	Nut .....		
68	1	1			1136-0891-01	Fjäder .....	Spring .....		
69	1	1			9997-0512-16	Skruv .....	Screw .....		
70	1	1			9747-0531-02	Mutter .....	Nut .....		
71	1	1			1136-0275-01	Skydd- övre .....	Guard- upper .....		
72	1	1			1136-0276-01	Skydd- nedre .....	Guard- lower .....		
73	2	2			9847-8038-16	Skruv .....	Screw .....		
74	2	2			9699-0024-02	Planbricka .....	Flat washer .....		
75	2	2			1136-0010-01	Låsplatta .....	Lock plate .....		
81	1	1			1136-1491-01	Stöd .....	Support .....		
82	3	3			9836-9635-12	Skruv .....	Screw .....		
83	1	1			1136-1490-01	Bränsletank .....	Fuel tank .....		
84	2	2			9836-9635-12	Skruv .....	Screw .....		
85	2	2			9699-0060-02	Planbricka .....	Flat washer .....		
86	1	1			1136-1488-01	Skydd .....	Guard .....		



Utgåva Issue 2004- 13		Bildnr Picture No 1227B		GARDEN COMBI GARDEN COMBI HST KAROSS		GARDEN COMBI GARDEN COMBI HST BODY WORK		Sida Page 30	
Pos. Fig.	Antal/Quantity				Art nr Part No	Benämning	Description	Sats Kit	Anmärkning Notes
	2511	2512							
87	1	1			1136-0344-01	Tanklock .....	Tank cap .....		Inkl. pos 54 - 56, 62
88	1	1			1136-1478-01	Slang .....	Tube .....		
89	1	1			1136-1492-01	Stöd .....	Support .....		
90	1	1			1136-1487-01	Pinnbult .....	Stud .....		
91	2	2			9739-0831-22	Mutter .....	Nut .....		
99	1	1			1136-1238-01	Tillbehörspåse .....	Key outfit.....		

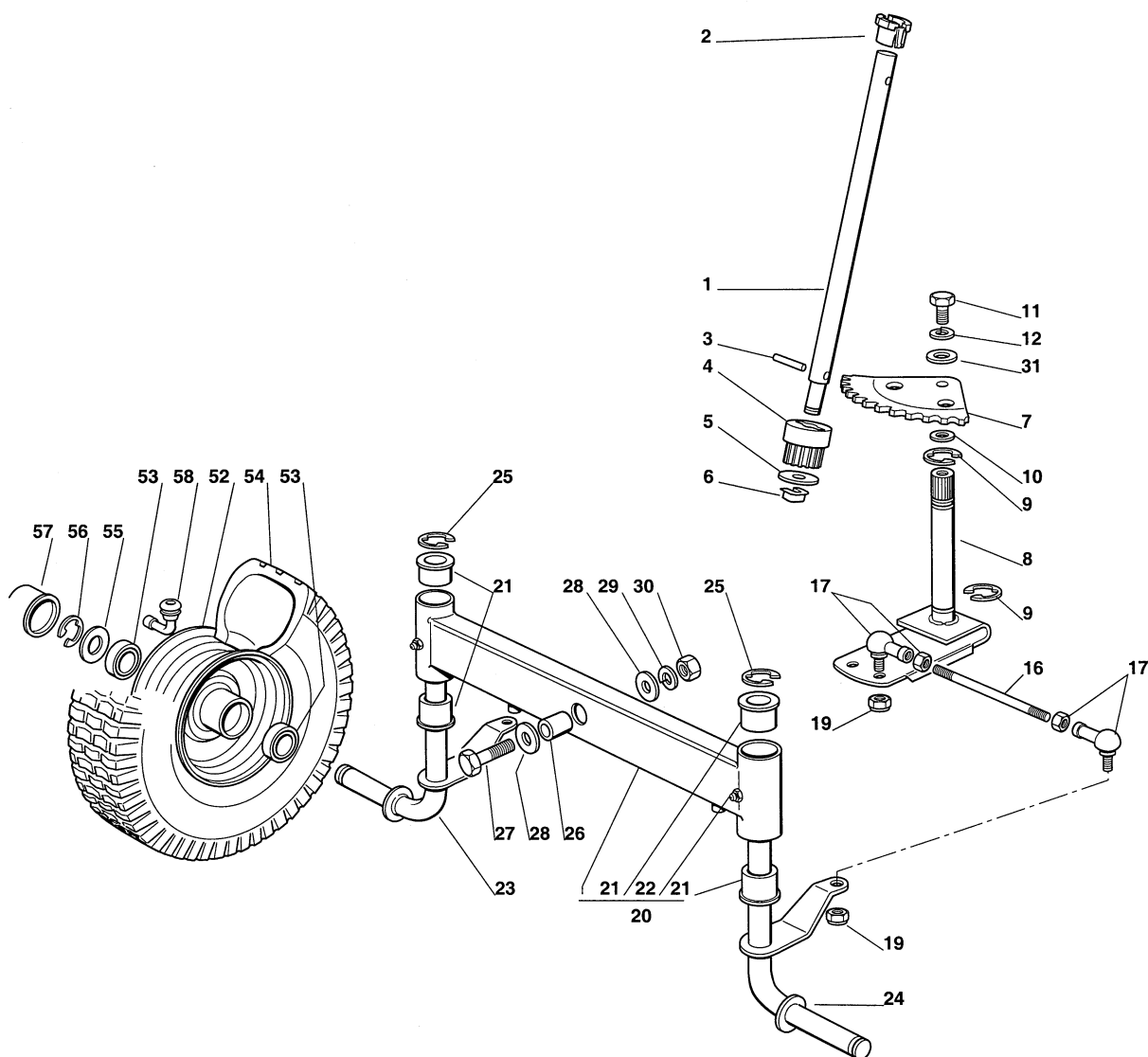


Utgåva Issue 2004- 13		Bildnr Picture No 1209A		GARDEN COMBI GARDEN COMBI HST DEKALER		GARDEN COMBI GARDEN COMBI HST LABELS		Sida Page 32	
Pos. Fig.	Antal/Quantity				Art nr Part No	Benämning	Description	Sats Kit	Anmärkning Notes
	2511	2512							
1	1	1			1136-0035-01	Dekal .....	Label .....		Ej ill/not ill. Ej ill/not ill. Ø 55 mm 80 x 20 mm 140 x 33 mm
2	1	1			1136-0037-01	Dekal .....	Label .....		
3	1	1			1136-0032-01	Dekal .....	Label .....		
4	1	1			1136-0036-01	Dekal .....	Label .....		
5	1	1			1136-0038-01	Dekal .....	Label .....		
6	1	1			1136-0034-01	Dekal .....	Label .....		
7	1				1136-0033-01	Dekal .....	Label .....		
8		1			1136-0826-01	Dekal .....	Label .....		
9		1			1136-0030-01	Dekal .....	Label .....		
10	2	2			1136-0021-01	Dekal .....	Label .....		
99	2				1136-1442-01	Dekal "Combi" .....	Label "Combi" .....		
99		2			1136-1443-01	Dekal "Combi HST" .....	Label "Combi HST" .....		
99	1	1			1136-1451-01	Dekal "STIGA" .....	Label "STIGA" .....		
99	3	3			1136-1452-01	Dekal "STIGA" .....	Label "STIGA" .....		
99	1	1			1136-1453-01	Dekal "STIGA" .....	Label "STIGA" .....		

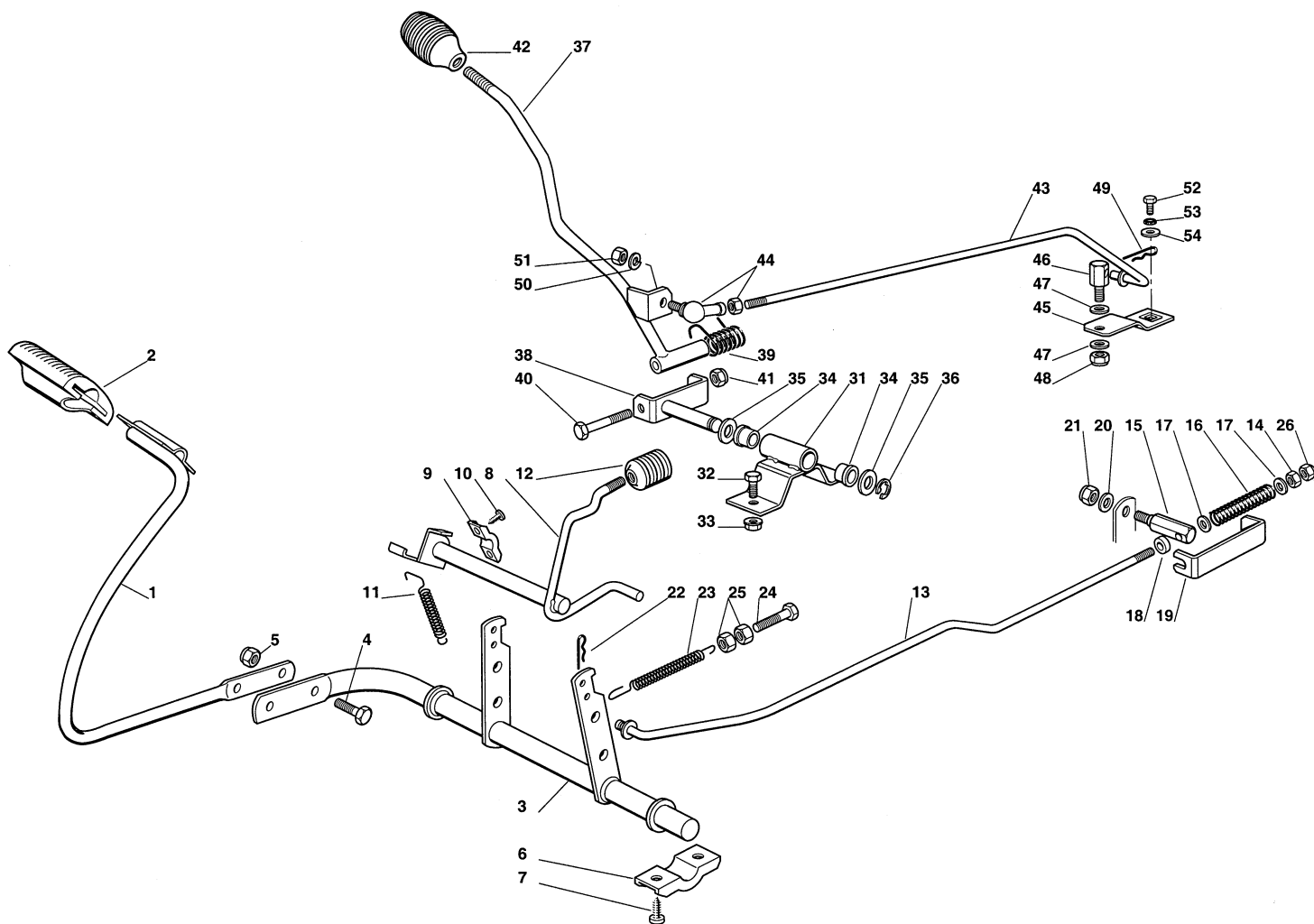




Utgåva Issue  2004- 13		Bildnr Picture No  1226C		GARDEN COMBI GARDEN COMBI HST CHASSI		GARDEN COMBI GARDEN COMBI HST CHASSIS		Sida Page  34	
Pos. Fig.	Antal/Quantity				Art nr Part No	Benämning	Description	Sats Kit	Anmärkning Notes
	2511	2512							
1	1	1			1136-1505-01	Ram.....	Frame.....		Inkl. pos 2, 26, 27
2	2	2			1136-0121-01	• Bussning.....	• Bushing.....		
3	1	1			1136-0582-01	Plåt- bak.....	Plate- rear.....		
4	1	1			1136-0371-01	Pivotstång .....	Pivot.....		
5	2	2			1136-0251-01	Bygel .....	Clamp.....		
6	8	8			9997-0616-16	Skruv .....	Screw .....		
7	8	8			9739-0631-22	Mutter.....	Nut .....		
8	1	1			1136-1288-01	Ram- övre.....	Frame- top.....		
9	4	4			9997-0816-16	Skruv .....	Screw .....		
10	4	4			9739-0831-22	Mutter.....	Nut .....		
11	1	1			1136-1504-01	Stöd.....	Support.....		
12	4	4			9997-0816-16	Skruv .....	Screw .....		
13	4	4			9739-0831-22	Mutter.....	Nut .....		
14	1	1			1136-0595-01	Fotstegshållare .....	Footboard holder.....		
15	2	2			1136-0423-01	Stöd.....	Support.....		
16	4	4			9997-0816-16	Skruv .....	Screw .....		
17	4	4			9739-0831-22	Mutter.....	Nut .....		
18	2	2			9847-8216-16	Skruv .....	Screw .....		
19	2	2			9699-0035-02	Planbricka.....	Flat washer.....		
20	1	1			1136-0566-01	Lina .....	Cord .....		
23	1	1			9699-0056-02	Planbricka.....	Flat washer.....		
24	1	1			9747-0831-02	Mutter.....	Lock nut .....		
25	1	1			1136-0013-01	Mutter.....	Nut .....		
26	1	1			9501-0500-00	• Smörjnippel .....	• Grease joint.....		
27	1	1			1136-1226-01	• Bussning.....	• Bushing.....		
33	2	2			1136-1240-01	Fjäder.....	Spring .....		
34	2	2			1136-1493-01	Skruv .....	Screw .....		
35	2	2			9699-0090-02	Planbricka.....	Flat washer.....		
36	4	4			9739-0831-22	Mutter.....	Nut .....		
37	2	2			1136-0156-01	Lock.....	Cap .....		
39	1	1			1136-0395-01	Fjäder.....	Spring .....		
40	1	1			9848-8013-16	Skruv .....	Screw .....		
41	1	1			1136-0387-01	Styrning.....	Guide .....		
42	1	1			9847-8216-16	Skruv .....	Screw .....		
43	1	1			9699-0060-02	Planbricka.....	Flat washer.....		
45	1				1136-0388-01	Remstyrning.....	Belt guide.....		
46	2				9848-8013-16	Skruv .....	Screw .....		
47	1	1			1136-0421-01	Fäste .....	Clamp.....		
48	2	2			9847-7809-16	Skruv .....	Screw .....		
51	2	2			1136-1254-01	Bussning .....	Bushing.....		
52	2	2			1136-1266-01	Fjäder.....	Spring .....		
53	4	4			1136-0308-01	Bricka .....	Washer.....		
54	2	2			1136-1211-01	Låsring .....	Snap ring .....		
55	1				1136-1501-01	Remstyrning.....	Belt guide.....		
56	1				9848-8013-16	Skruv .....	Screw .....		

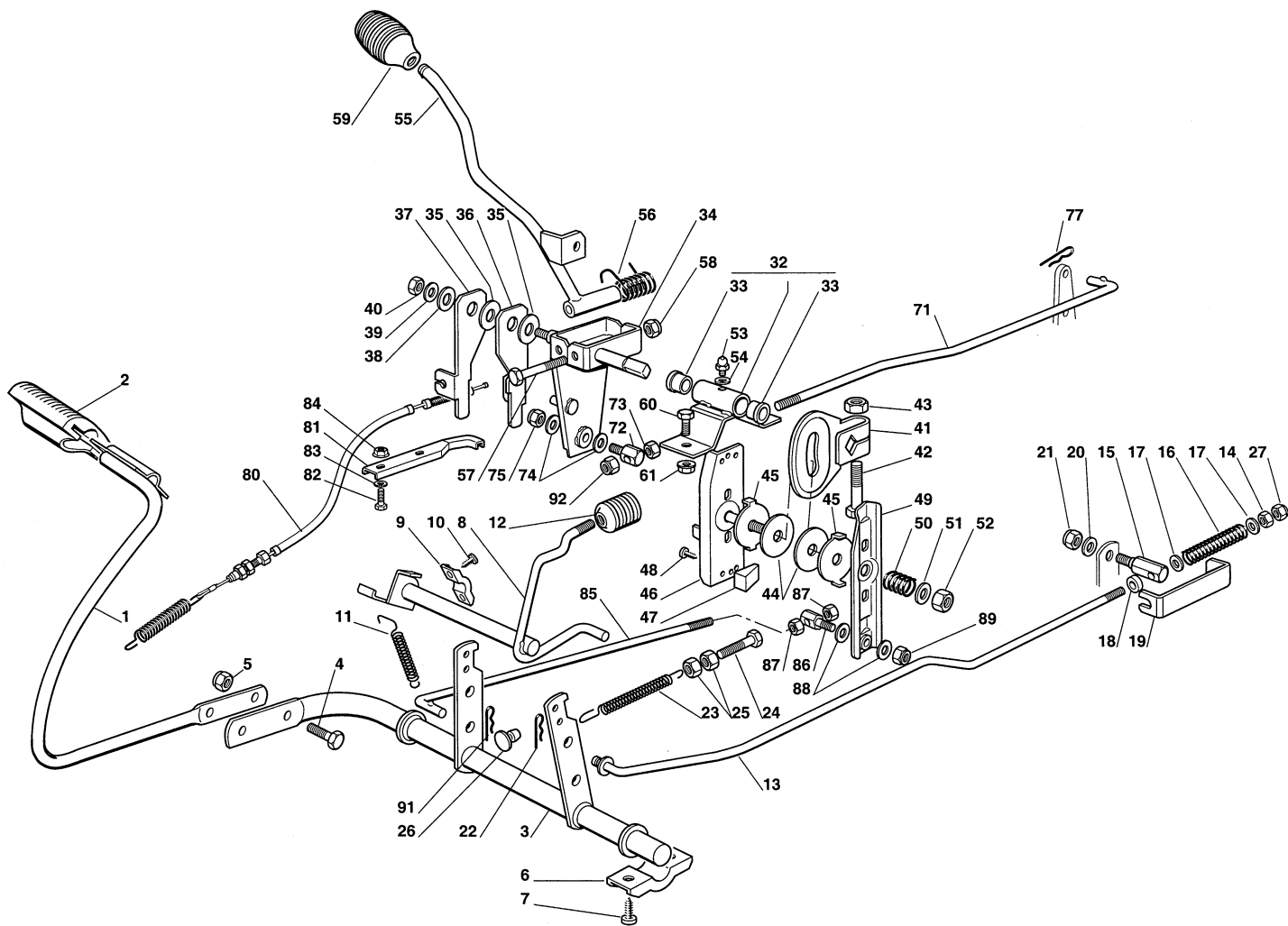


Utgåva Issue 2004- 13		Bildnr Picture No 1228A		GARDEN COMBI GARDEN COMBI HST STYRNING		GARDEN COMBI GARDEN COMBI HST STEERING		Sida Page 36	
Pos. Fig.	Antal/Quantity				Art nr Part No	Benämning	Description	Sats Kit	Anmärkning Notes
	2511 2512								
1	1				1136-0403-01	Rattstång .....	Steering column.....		Inkl. pos 21, 22
2	1				1136-1469-01	Bussning .....	Bushing .....		
3	1				9595-0262-00	Spännstift .....	Locating pin .....		
4	1				1136-0408-01	Styrdrev .....	Steering pinion .....		
5	1				9699-0037-02	Bricka .....	Washer .....		
6	1				1136-0008-01	Låsplatta .....	Lock plate .....		
7	1				1136-0588-01	Styrsektor .....	Steering sector .....		
8	1				1136-0557-01	Styraxel .....	Steering shaft.....		
9	2				9652-0015-04	Låsring .....	Retaining ring .....		
10	0-2				9695-0014-00	Bricka .....	Washer .....		
11	1				9997-0820-16	Skruv .....	Screw .....		
12	1				9683-0030-02	Låsbricka .....	Lock washer .....		
16	2				1136-0424-01	Styrstag .....	Tie rod .....		
17	4				1136-0092-01	Kulled .....	Ball joint.....		
19	4				9747-1031-02	Låsmutter .....	Lock nut .....		
20	1				1136-0564-01	Framaxel kpl .....	Front wheel axle assy .....		
21	4				1136-0121-01	• Bussning.....	• Bushing .....		
22	2				9501-0500-00	• Smörjnippel .....	• Grease joint .....		
23	1				1136-0575-01	Hjulspindel- hö.....	Stub axle- RH .....		
24	1				1136-0576-01	Hjulspindel- vä.....	Stub axle- LH.....		
25	2				9652-0015-04	Låsring .....	Retaining ring .....		
26	1				1136-0165-01	Distans .....	Spacer .....		
27	1				9997-1260-02	Skruv .....	Screw .....		
28	2				1136-0016-01	Bricka .....	Washer .....		
29	1				9683-0055-02	Låsbricka .....	Lock washer .....		
30	1				9799-1231-02	Mutter.....	Nut .....		
31	1				9699-0090-02	Planbricka.....	Flat washer .....		
52	2				1136-0567-01	Fälg.....	Rim .....		
53	4				1136-0157-01	Lager .....	Bearing .....		
54	2				1136-0409-01	Däck (Turf Saver).....	Tire (Turf Saver) .....		
54	2				1136-0411-01	Däck (Deli) .....	Tire (Deli) .....		
55	2				1136-0305-01	Bricka .....	Washer .....		
56	2				9652-0015-04	Låsring .....	Retaining ring .....		
57	2				1136-0081-01	Navkapsel .....	Hub cap.....		
58	2				1136-0359-01	Ventil .....	Valve .....		



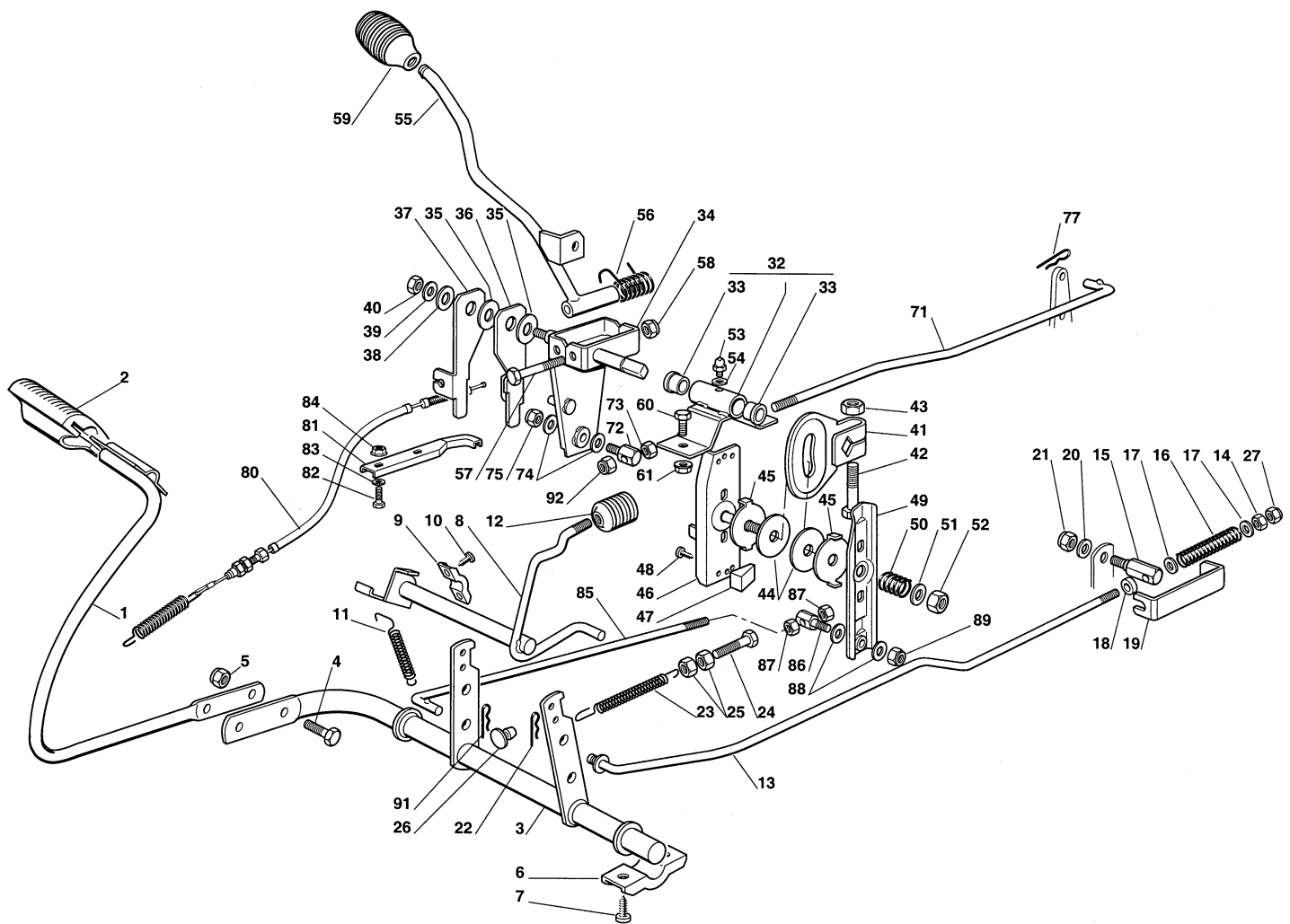
Utgåva Issue 2004- 13		Bildnr Picture No 1229B		GARDEN COMBI BROMSREGLAGE VÄXELREGLAGE		GARDEN COMBI BRAKE CONTROL GEAR SHIFTER CONTROL		Sida Page 38	
Pos. Fig.	Antal/Quantity				Art nr Part No	Benämning	Description	Sats Kit	Anmärkning Notes
	2511								
1	1				1136-0581-01	Bromspedal .....	Brake pedal .....		
2	1				1136-0152-01	Pedalskydd .....	Pedal cover .....		
3	1				1136-0562-01	Pedalaxel .....	Pedal shaft .....		
4	2				9997-0825-16	Skruv .....	Screw .....		
5	2				9747-0831-02	Mutter .....	Lock nut .....		
6	2				1136-0406-01	Bygel .....	Clamp .....		
7	4				9847-8119-16	Skruv .....	Screw .....		
8	1				1136-0561-01	P- bromsaxel .....	Parking brake shaft .....		
9	2				1136-0256-01	Bygel .....	Plate .....		
10	4				9847-8016-16	Skruv .....	Screw .....		
11	1				1136-0394-01	Fjäder .....	Spring .....		
12	1				1136-0392-01	Knopp .....	Knob .....		
13	1				1136-0930-01	Stång .....	Rod .....		
14	1				9799-0831-02	Mutter .....	Nut .....		
15	1				1136-1485-01	Ledbult .....	Pivot bolt .....		
16	1				1136-0218-01	Fjäder .....	Spring .....		
17	2				9699-0090-02	Planbricka .....	Flat washer .....		
18	1				1136-0084-01	Distans .....	Spacer .....		
19	1				1136-0329-01	Bygel .....	Clamp .....		
20	1				9699-0085-02	Planbricka .....	Flat washer .....		
21	1				9747-0631-02	Låsmutter .....	Lock nut .....		
22	1				1136-0095-01	Låsnål .....	Hair pin .....		
23	1				1136-0209-01	Fjäder .....	Spring .....		
24	1				1136-0094-01	Skruv .....	Screw .....		
25	2				9799-0831-02	Mutter .....	Nut .....		
26	1				9747-0831-02	Mutter .....	Lock nut .....		
31	1				1136-0589-01	Fäste .....	Support .....		
32	2				9997-0820-16	Skruv .....	Screw .....		
33	2				9739-0831-22	Mutter .....	Nut .....		
34	2				1136-0374-01	Bussning .....	Bushing .....		
35	2				9699-0037-02	Bricka .....	Washer .....		
36	1				9650-0012-04	Seegersäkring .....	Circlip .....		
37	1				1136-0577-01	Växelspak .....	Gearshift lever .....		
38	1				1136-0590-01	Bygel .....	Clamp .....		
39	1				1136-0212-01	Fjäder .....	Spring .....		
40	1				9997-0880-16	Skruv .....	Screw .....		
41	1				9747-0831-02	Mutter .....	Lock nut .....		
42	1				1136-0503-01	Knopp .....	Knob .....		
43	1				1136-0366-01	Växelstång .....	Shifter rod .....		
44	1				1136-0093-01	Kulled .....	Ball joint .....		
45	1				1136-0390-01	Växelarm .....	Gearshift arm .....		
46	1				1136-0235-01	Ledbult .....	Pivot bolt .....		
47	2				1136-0309-01	Bricka .....	Washer .....		
48	1				9747-0831-02	Mutter .....	Lock nut .....		
49	1				1136-0095-01	Låsnål .....	Hair pin .....		
50	1				9683-0030-02	Låsbricka .....	Lock washer .....		
51	1				9799-0831-02	Mutter .....	Nut .....		
52	1				9987-5016-16	Skruv .....	Screw .....		
53	1				9678-0008-02	Låsbricka .....	Lock washer .....		
54	1				1136-0091-01	Bricka .....	Washer .....		

X



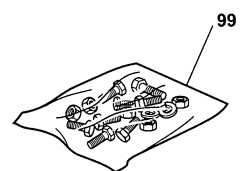
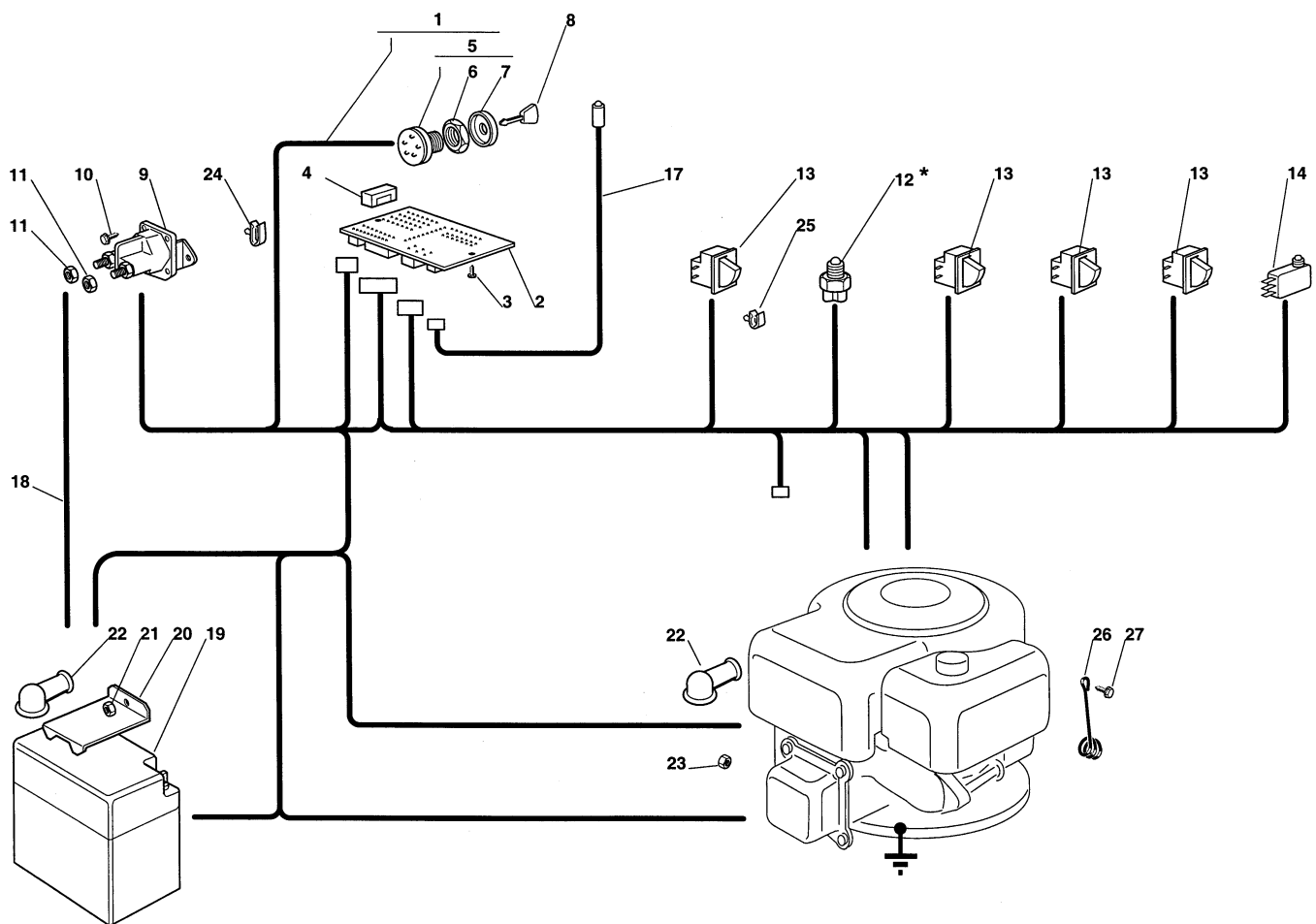
Utgåva Issue 2004- 13		Bildnr Picture No 1445A		GARDEN COMBI HST BROMSREGLAGE DRIVREGLAGE		GARDEN COMBI HST BRAKE CONTROL DRIVE CONTROL		Sida Page 40	
Pos. Fig.	Antal/Quantity				Art nr Part No	Benämning	Description	Sats Kit	Anmärkning Notes
	2512								
1	1				1136-0581-01	Bromspedal .....	Brake pedal .....		Inkl. pos 33
2	1				1136-0151-01	Pedalskydd .....	Pedal cover .....		
3	1				1136-0562-01	Pedalaxel .....	Pedal shaft .....		
4	2				9997-0825-16	Skruv .....	Screw .....		
5	2				9747-0831-02	Mutter .....	Lock nut .....		
6	2				1136-0406-01	Bygel .....	Clamp .....		
7	4				9847-8119-16	Skruv .....	Screw .....		
8	1				1136-0561-01	P- bromsaxel .....	Parking brake shaft .....		
9	2				1136-0256-01	Bygel .....	Plate .....		
10	4				9847-8016-16	Skruv .....	Screw .....		
11	1				1136-0394-01	Fjäder .....	Spring .....		
12	1				1136-0392-01	Knopp .....	Knob .....		
13	1				1136-0930-01	Stång .....	Rod .....		
14	1				9799-0831-02	Mutter .....	Nut .....		
15	1				1136-0402-01	Ledbult .....	Pivot bolt .....		
16	1				1136-0218-01	Fjäder .....	Spring .....		
17	2				9699-0090-02	Planbricka .....	Flat washer .....		
18	1				1136-0084-01	Distans .....	Spacer .....		
19	1				1136-0329-01	Bygel .....	Clamp .....		
20	1				9699-0085-02	Planbricka .....	Flat washer .....		
21	1				9747-0631-02	Låsmutter .....	Lock nut .....		
22	1				1136-0095-01	Låsnål .....	Hair pin .....		
23	1				1136-0204-01	Fjäder .....	Spring .....		
24	1				1136-0094-01	Skruv .....	Screw .....		
25	2				9799-0831-02	Mutter .....	Nut .....		
26	1				1136-0386-01	Gummiplugg .....	Grommet .....		
27	1				9747-0831-02	Mutter .....	Lock nut .....		
32	1				1136-1099-01	Fäste m.lager .....	Bracket w.bush .....		
33	2				1136-0937-01	• Bussning .....	• Bush .....		
34	1				1136-1096-01	Arm .....	Lever .....		
35	2				1136-0088-01	Bricka .....	Washer .....		
36	1				1136-1000-01	Bygel .....	Clamp .....		
37	1				1136-1001-01	Bygel .....	Clamp .....		
38	1				1136-0089-01	Bricka .....	Washer .....		
39	1				9699-0056-02	Planbricka .....	Flat washer .....		
40	1				9712-0831-02	Låsmutter .....	Lock nut .....		
41	1				1136-0996-01	Sektor .....	Sector .....		
42	1				1136-0824-01	Skruv .....	Screw .....		
43	1				1136-0806-01	Mutter .....	Nut .....		
44	2				1136-0950-01	Platta .....	Plate .....		
45	2				1136-0992-01	Bricka .....	Washer .....		
46	1				1136-1098-01	Bygel .....	Clamp .....		
47	2				1136-0941-01	Kam .....	Cam .....		
48	2				9848-8013-16	Skruv .....	Screw .....		
49	1				1136-1097-01	Arm .....	Lever .....		
50	1				1136-0958-01	Fjäder .....	Spring .....		
51	1				1136-0308-01	Bricka .....	Washer .....		
52	1				1136-0806-01	Mutter .....	Nut .....		
53	1				9501-0500-00	Smörjnippel .....	Grease joint .....		
54	1				9699-0035-02	Planbricka .....	Flat washer .....		
55	1				1136-0577-01	Växelspak .....	Gearshift lever .....		
56	1				1136-0212-01	Fjäder .....	Spring .....		
57	1				9997-0880-16	Skruv .....	Screw .....		
58	1				9747-0831-02	Mutter .....	Lock nut .....		
59	1				1136-0503-01	Knopp .....	Knob .....		
60	2				9997-0820-16	Skruv .....	Screw .....		
61	2				9739-0831-22	Mutter .....	Nut .....		
71	1				1136-0931-01	Stång .....	Rod .....		
72	1				1136-0235-01	Ledbult .....	Pivot bolt .....		
73	1				9799-0831-02	Mutter .....	Nut .....		
74	2				1136-0309-01	Bricka .....	Washer .....		
75	1				9712-0831-02	Låsmutter .....	Lock nut .....		
77	1				1136-0095-01	Låsnål .....	Hair pin .....		

Inkl. pos 33

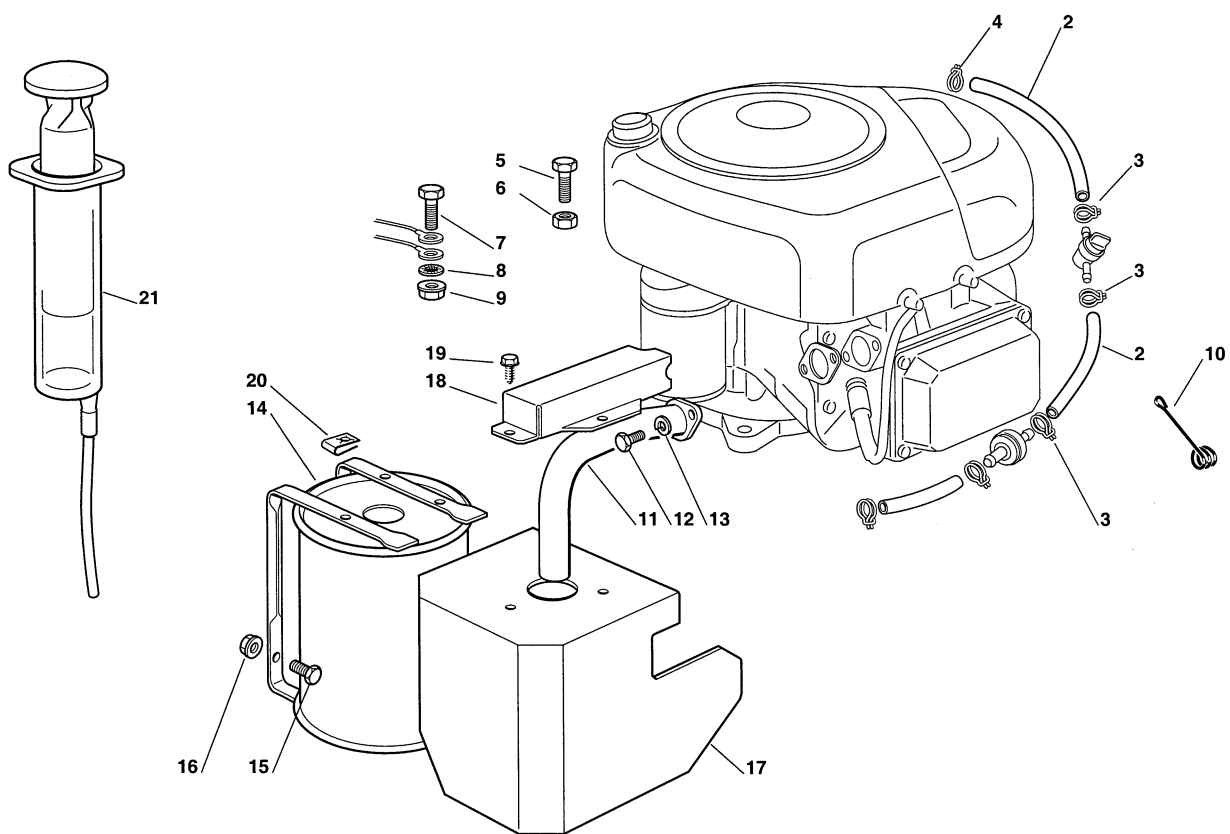




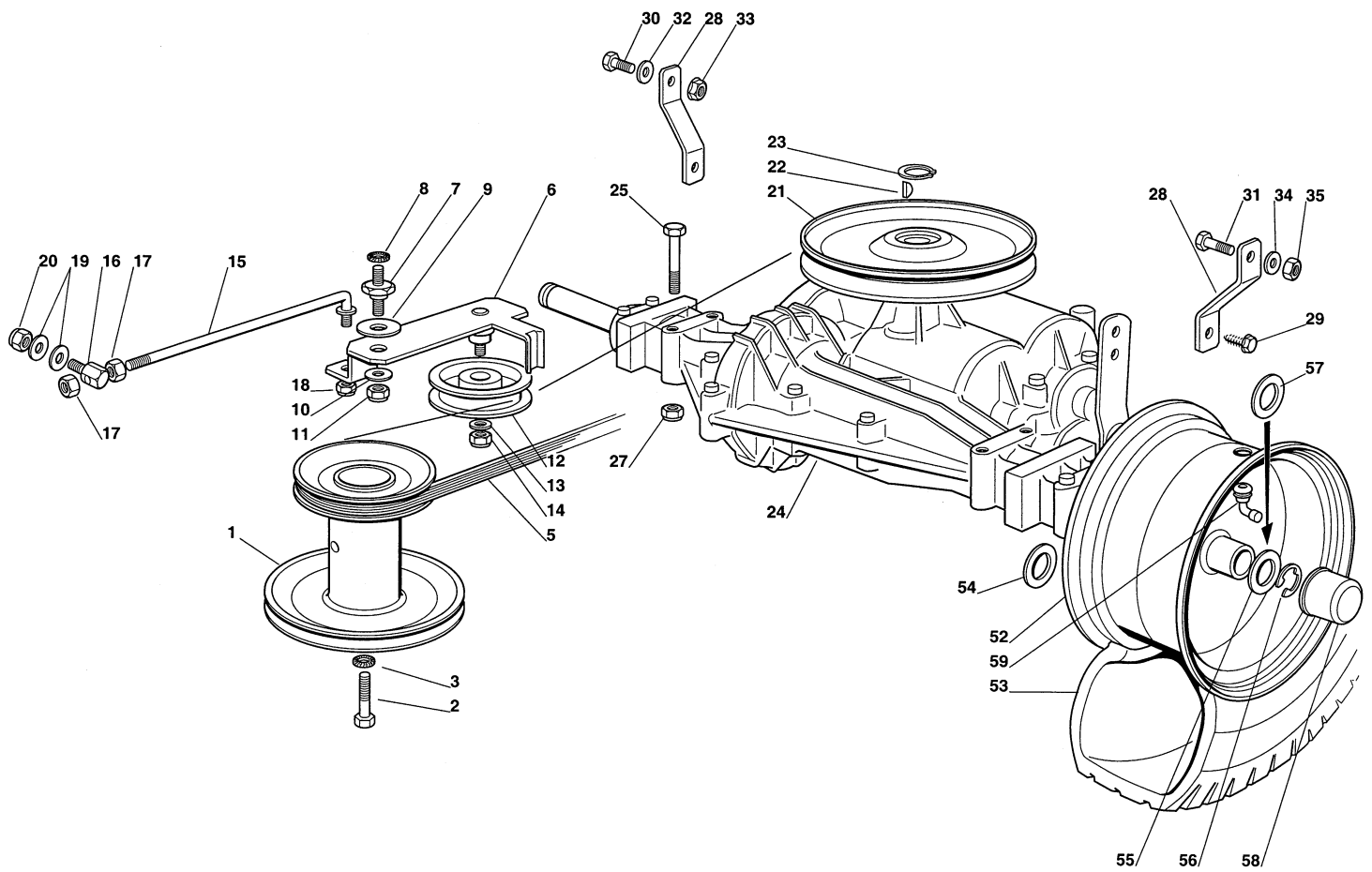
Utgåva Issue 2004- 13		Bildnr Picture No 1445A		GARDEN COMBI HST BROMSREGLAGE DRIVREGLAGE		GARDEN COMBI HST BRAKE CONTROL DRIVE CONTROL		Sida Page 42	
Pos. Fig.	Antal/Quantity				Art nr Part No	Benämning	Description	Sats Kit	Anmärkning Notes
	2512								
80	1				1136-1072-01 Wire.....	Wire .....			
81	1				1136-1002-01 Bygel .....	Clamp.....			
82	2				9997-0620-16 Skruv .....	Screw .....			
83	2				9699-0035-02 Planbricka.....	Flat washer.....			
84	2				9739-0631-22 Mutter.....	Nut.....			
85	1				1136-0929-01 Stång .....	Rod .....			
86	1				1136-0235-01 Ledbult .....	Pivot bolt.....			
87	2				9799-0831-02 Mutter.....	Nut.....			
88	2				1136-0309-01 Bricka .....	Washer.....			
89	1				9712-0831-02 Låsmutter .....	Lock nut.....			
91	1				1136-0095-01 Låsnål.....	Hair pin .....			
92	1				9747-0831-02 Mutter.....	Lock nut.....			



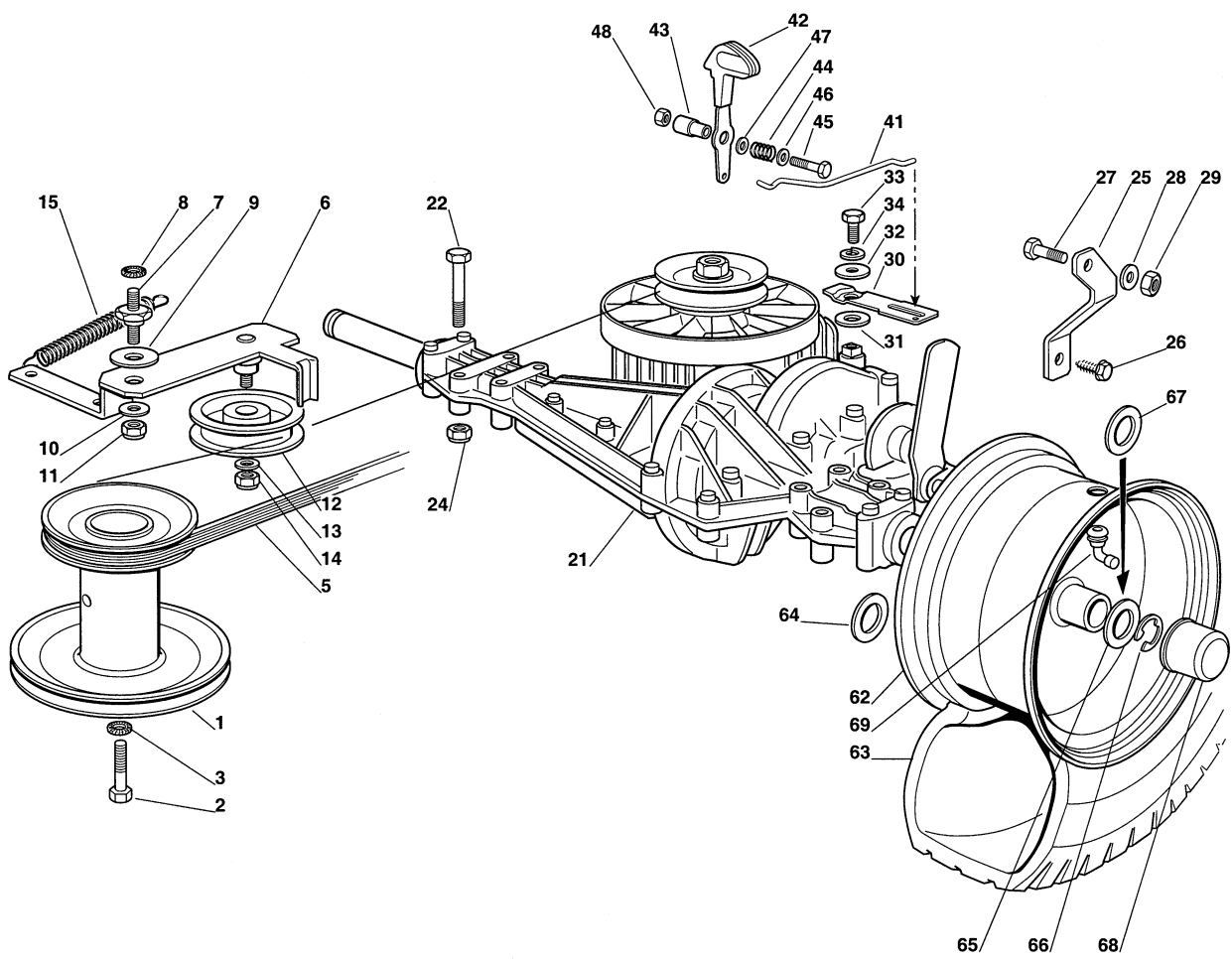
Utgåva Issue 2004- 13		Bildnr Picture No 1236B		GARDEN COMBI GARDEN COMBI HST ELUTRUSTNING		GARDEN COMBI GARDEN COMBI HST EL. EQUIPMENT		Sida Page 44	
Pos. Fig.	Antal/Quantity				Art nr Part No	Benämning	Description	Sats Kit	Anmärkning Notes
	2511 2512								
1	1				1136- 1500- 01	Kabelhärva.....	Harness.....		Inkl. pos 5
2	1				1136- 0314- 01	Elektronikkort .....	Electronic card .....		
3	2				9847- 7813- 16	Skruv .....	Screw .....		
4	1				1136- 0428- 01	• Säkring .....	• Fuse .....		6.3 A
5	1				1136- 0056- 01	• Tändningslås .....	• Ignition switch .....		Inkl. pos 6 - 7
6	1				1136- 0049- 01	• • Mutter .....	• • Nut .....		
7	1				1134- 4097- 01	• • Täckkåpa .....	• • Cap .....		
8	1				1134- 2848- 01	Tändningsnyckel.....	Ignition key .....		
9	1				1136- 0064- 01	Startrelä.....	Solenoid.....		
10	2				9848- 8013- 16	Skruv .....	Screw .....		
11	2				9794- 5131- 02	Mutter.....	Nut .....		
12	1				786201	Brytare.....	Neutral start switch .....		Växellåda/gearbox
13	4				1136- 0073- 01	Mikrobrytare.....	Micro switch .....		
14	1				1136- 0072- 01	Mikrobrytare.....	Micro switch .....		Full upps./grass bag
17	1				1136- 0135- 01	Kabel .....	Cable .....		
18	1				1136- 0376- 01	Kabel .....	Cable .....		
19	1				1134- 4804- 01	Batteri.....	Battery .....		
20	1				1136- 0422- 01	Batterihållare .....	Battery holder .....		
21	1				9747- 0831- 02	Mutter.....	Lock nut .....		
22	2				1136- 0059- 01	Polskydd.....	Protection .....		
23	1				9795- 3531- 02	Mutter.....	Nut .....		
24	3				1136- 0427- 01	Kabelhållare .....	Cable holder .....		
25	1				1136- 0426- 01	Kabelhållare .....	Cable holder .....		
26	1				1136- 1484- 01	Fjäder.....	Spring .....		
27	1				1136- 0815- 01	Skruv .....	Screw .....		
99	1				1136- 1238- 01	Tillbehörspåse .....	Key outfit.....		Inkl. pos 4, 8



Utgåva Issue 2004- 13		Bildnr Picture No 1700		GARDEN COMBI GARDEN COMBI HST MOTOR		GARDEN COMBI GARDEN COMBI HST ENGINE		Sida Page 46	
Pos. Fig.	Antal/Quantity				Art nr Part No	Benämning	Description	Sats Kit	Anmärkning Notes
	2511 2512								
2	2				1136-1479-01	Slang .....	Tube .....		L = 35 mm  L = 40 mm
3	3				1136-0045-01	Slangklämma .....	Hose clamp .....		
4	1				1136-0046-01	Slangklämma .....	Hose clamp .....		
5	3				9997-0835-12	Skruv .....	Screw .....		
6	3				9739-0831-22	Mutter .....	Nut .....		
7	1				9997-0840-16	Skruv .....	Screw .....		
8	1				9677-0009-02	Låsbricka .....	Lock washer .....		
9	1				9739-0831-22	Mutter .....	Nut .....		
10	1				1136-0892-01	Fjäder .....	Spring .....		
11	1				1136-1468-01	Avgasrör .....	Exhaust conn. tube .....		
12	2				1136-1466-01	Skruv .....	Screw .....		
13	2				9683-0030-02	Låsbricka .....	Lock washer .....		
14	1				1136-1494-01	Ljuddämpare .....	Muffler .....		
15	2				9997-0820-16	Skruv .....	Screw .....		
16	2				9739-0831-22	Mutter .....	Nut .....		
17	1				1136-1503-01	Ljuddämparskydd .....	Muffler protection .....		
18	1				1136-1489-01	Skydd .....	Protection .....		
19	3				9847-8116-16	Skruv .....	Screw .....		
20	3				1136-1464-01	Låsplatta .....	Lock plate .....		
21	1				1134-3898-01	Oljepump .....	Oil pump .....		



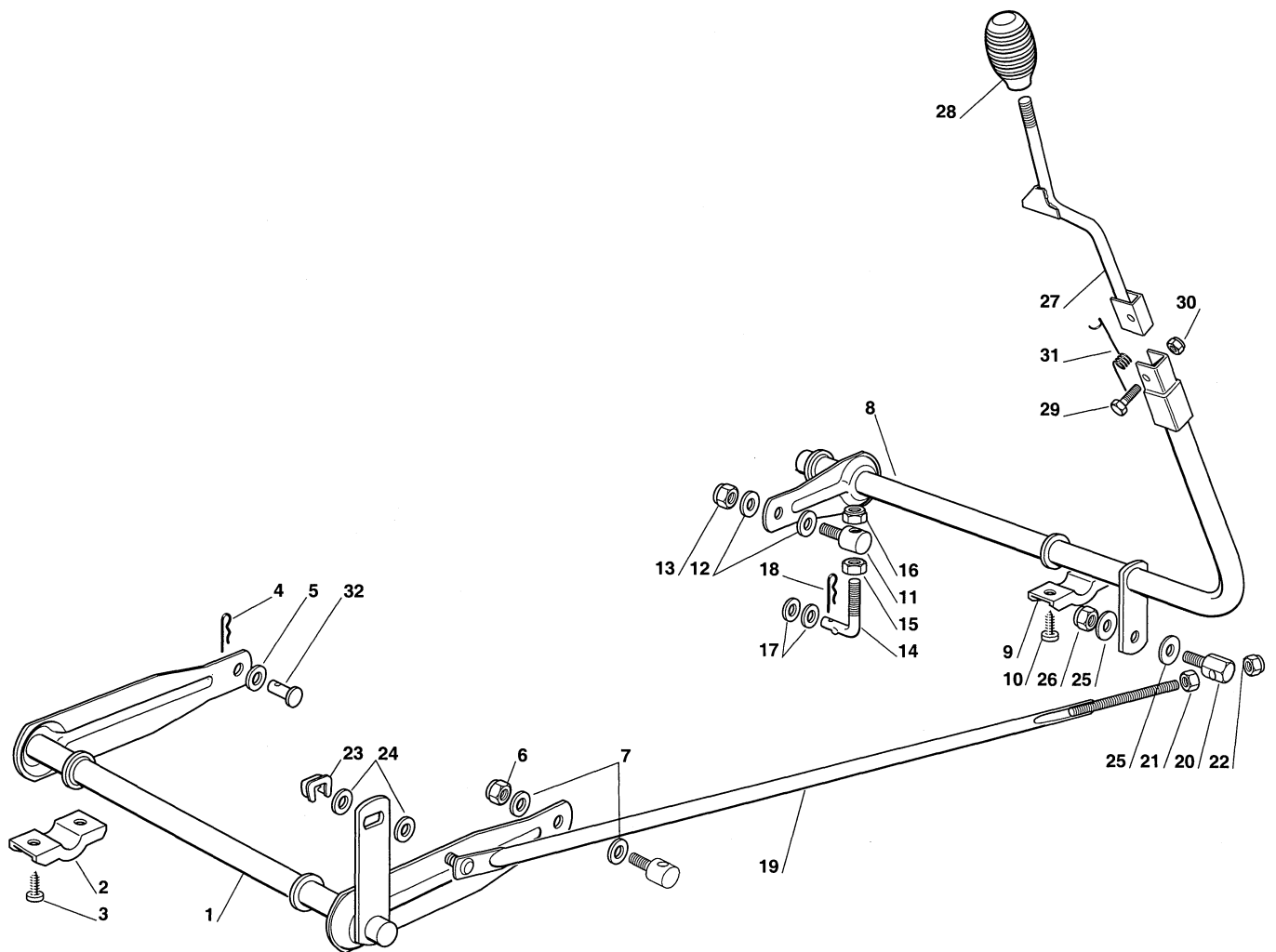
Utgåva Issue  2004- 13		Bildnr Picture No  1231A		GARDEN COMBI TRANSMISSION		GARDEN COMBI TRANSMISSION		Sida Page  48	
Pos. Fig.	Antal/Quantity				Art nr Part No	Benämning	Description	Sats Kit	Anmärkning Notes
	2511								
1	1				1136-0418-01	Motorremskiva .....	Engine belt pulley .....		Peerless MST 205-541
2	1				9987-5351-12	Skruv .....	Screw .....		
3	1				9683-0045-02	Bricka .....	Washer .....		
5	1				1136-0430-01	Kilrem .....	V- belt .....		
6	1				1136-0578-01	Spännarm .....	Tension arm .....		
7	1				1136-0400-01	Pinnbult .....	Stud bolt .....		
8	1				9677-0009-02	Låsbricka .....	Lock washer .....		
9	1				1136-0088-01	Bricka .....	Washer .....		
10	1				1136-0309-01	Bricka .....	Washer .....		
11	1				9712-0831-02	Låsmutter .....	Lock nut .....		
12	1				1136-0289-01	Spännrulle .....	Idler pulley .....		
13	1				9699-0056-02	Planbricka .....	Flat washer .....		
14	1				9747-0831-02	Mutter .....	Lock nut .....		
15	1				1136-0367-01	Spännstång .....	Tie rod .....		
16	1				1136-0235-01	Ledbult .....	Pivot bolt .....		
17	2				9799-0831-02	Mutter .....	Nut .....		
18	1				9747-0831-02	Mutter .....	Lock nut .....		
19	2				1136-0309-01	Bricka .....	Washer .....		
20	1				9747-0831-02	Mutter .....	Lock nut .....		
21	1				1136-0520-01	Remskiva .....	Belt pulley .....		
22	1				9600-0050-00	Woodruffkil .....	Key .....		
23	1				9650-0016-04	Spärring .....	Lock ring .....		
24	1				1136-0051-01	Transaxel .....	Transaxle .....		
25	4				9997-0860-16	Skruv .....	Screw .....		
27	4				9739-0831-22	Mutter .....	Nut .....		
28	2				1136-0420-01	Momentstag .....	Stay .....		
29	2				1136-0017-01	Skruv .....	Screw .....		
30	1				9997-0820-16	Skruv .....	Screw .....		
31	1				9997-0825-16	Skruv .....	Screw .....		
32	1				9699-0056-02	Planbricka .....	Flat washer .....		
33	1				9739-0831-22	Mutter .....	Nut .....		
34	1				9699-0090-02	Planbricka .....	Flat washer .....		
35	1				9747-0831-02	Mutter .....	Lock nut .....		
52	2				1136-0568-01	Fälg .....	Rim .....		
53	2				1136-0410-01	Däck (Turf Saver) .....	Tire (Turf Saver) .....		
53	2				1136-0412-01	Däck (Deli) .....	Tire (Deli) .....		
54	2				9699-0119-02	Bricka .....	Washer .....		
55	2				1136-0305-01	Bricka .....	Washer .....		
56	2				9652-0015-04	Låsring .....	Retaining ring .....		
57	2-4				9695-0015-00	Bricka .....	Washer .....		
58	2				1136-0081-01	Navkapsel .....	Hub cap .....		
59	2				1136-0359-01	Ventil .....	Valve .....		



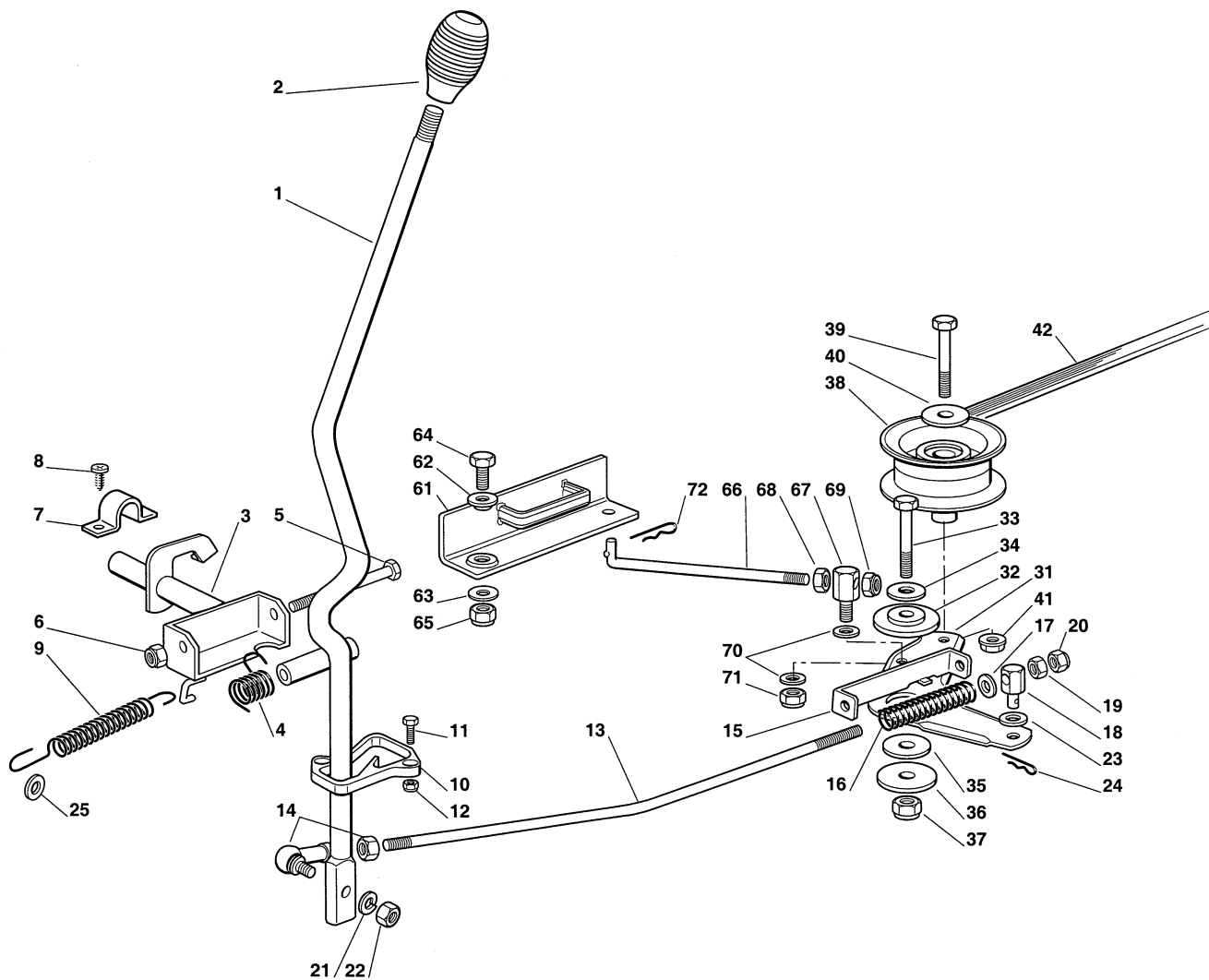


Utgåva Issue  2004- 13		Bildnr Picture No  1446B		GARDEN COMBI HST TRANSMISSION		GARDEN COMBI HST TRANSMISSION		Sida Page  50	
Pos. Fig.	Antal/Quantity				Art nr Part No	Benämning	Description	Sats Kit	Anmärkning Notes
	2512								
1	1				1136-0418-01	Motorremskiva .....	Engine belt pulley .....		Peerless LTH 2000
2	1				9987-5351-12	Skruv .....	Screw .....		
3	1				9683-0045-02	Bricka .....	Washer .....		
5	1				1136-1020-01	Drivrem .....	Drive belt .....		
6	1				1136-1079-01	Spännarm .....	Tension lever .....		
7	1				1136-0400-01	Pinnbult .....	Stud bolt .....		
8	1				9677-0009-02	Låsbricka .....	Lock washer .....		
9	1				1136-0088-01	Bricka .....	Washer .....		
10	1				1136-0309-01	Bricka .....	Washer .....		
11	1				9712-0831-02	Låsmutter .....	Lock nut .....		
12	1				1136-0289-01	Spännrulle .....	Idler pulley .....		
13	1				9699-0056-02	Planbricka .....	Flat washer .....		
14	1				9747-0831-02	Mutter .....	Lock nut .....		
15	1				1136-0860-01	Fjäder .....	Spring .....		
21	1				1136-1222-01	Transmission .....	Transmission .....		
22	4				9997-0860-16	Skruv .....	Screw .....		
24	4				9739-0831-22	Mutter .....	Nut .....		
25	1				1136-1003-01	Bygel .....	Clamp .....		
26	1				1136-0017-01	Skruv .....	Screw .....		
27	1				9997-0825-16	Skruv .....	Screw .....		
28	1				9699-0090-02	Planbricka .....	Flat washer .....		
29	1				9747-0831-02	Mutter .....	Lock nut .....		
30	1				1136-1260-01	Arm .....	Lever .....		
31	1				9699-0037-02	Bricka .....	Washer .....		
32	1				9699-0085-02	Planbricka .....	Flat washer .....		
33	1				9987-5016-16	Skruv .....	Screw .....		
34	1				9683-0025-02	Låsbricka .....	Lock washer .....		
41	1				1136-1481-01	Stag .....	Rod .....		
42	1				1136-1502-01	Spak .....	Lever .....		
43	1				1136-1486-01	Axel .....	Pin .....		
44	1				1136-0200-01	Fjäder .....	Spring .....		
45	1				9997-0645-12	Skruv .....	Screw .....		
46	1				9699-0035-02	Planbricka .....	Flat washer .....		
47	1				9699-0035-02	Planbricka .....	Flat washer .....		
48	1				9799-0631-02	Mutter .....	Nut .....		
62	2				1136-0568-01	Fälg .....	Rim .....		
63	2				1136-0410-01	Däck (Turf Saver) .....	Tire (Turf Saver) .....		
63	2				1136-0412-01	Däck (Deli) .....	Tire (Deli) .....		
64	2				9699-0119-02	Bricka .....	Washer .....		
65	2				1136-0305-01	Bricka .....	Washer .....		
66	2				9652-0015-04	Låsring .....	Retaining ring .....		
67	0-4				9695-0015-00	Bricka .....	Washer .....		
68	2				1136-0081-01	Navkapsel .....	Hub cap .....		
69	2				1136-0359-01	Ventil .....	Valve .....		

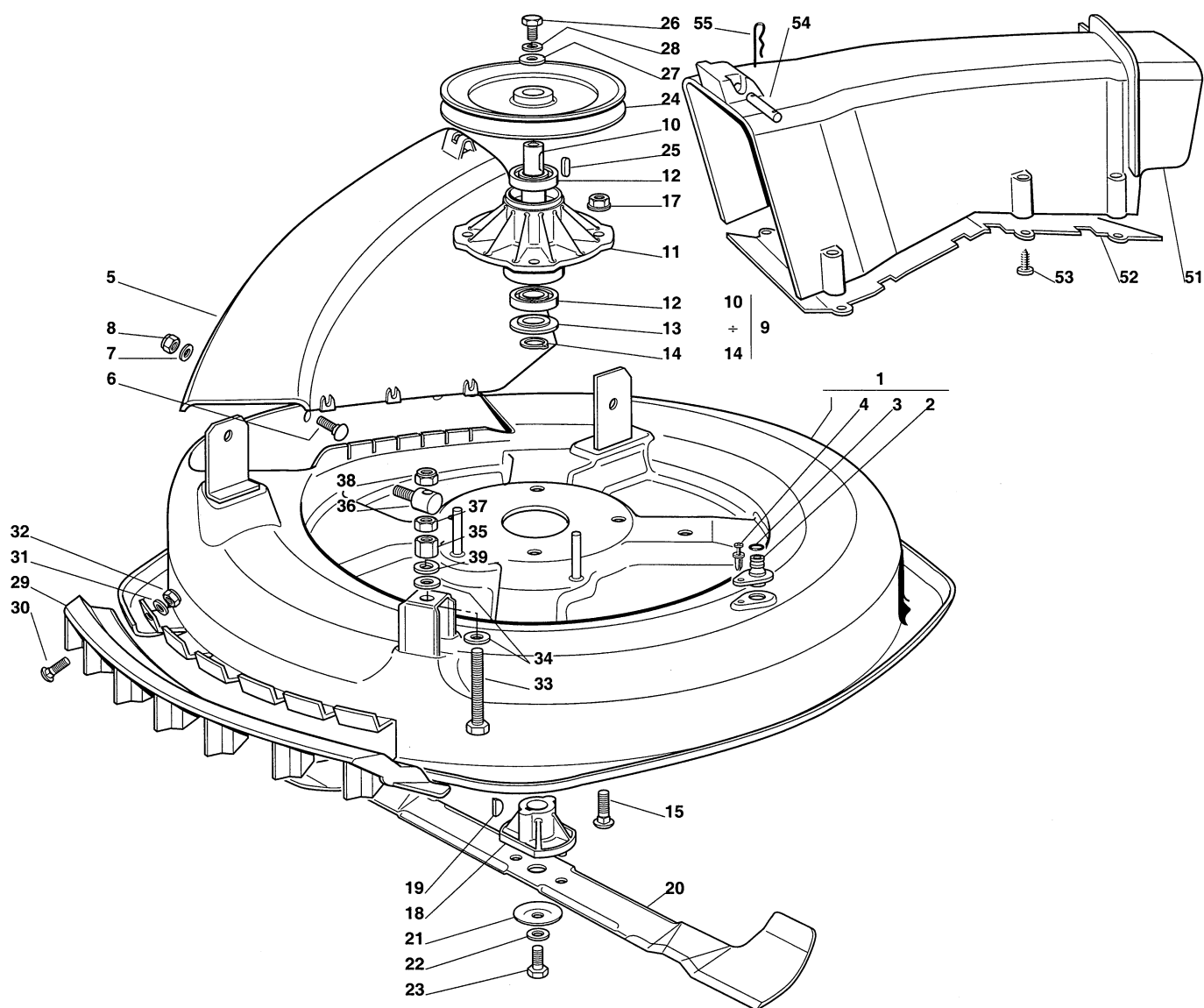
X  
X  
X



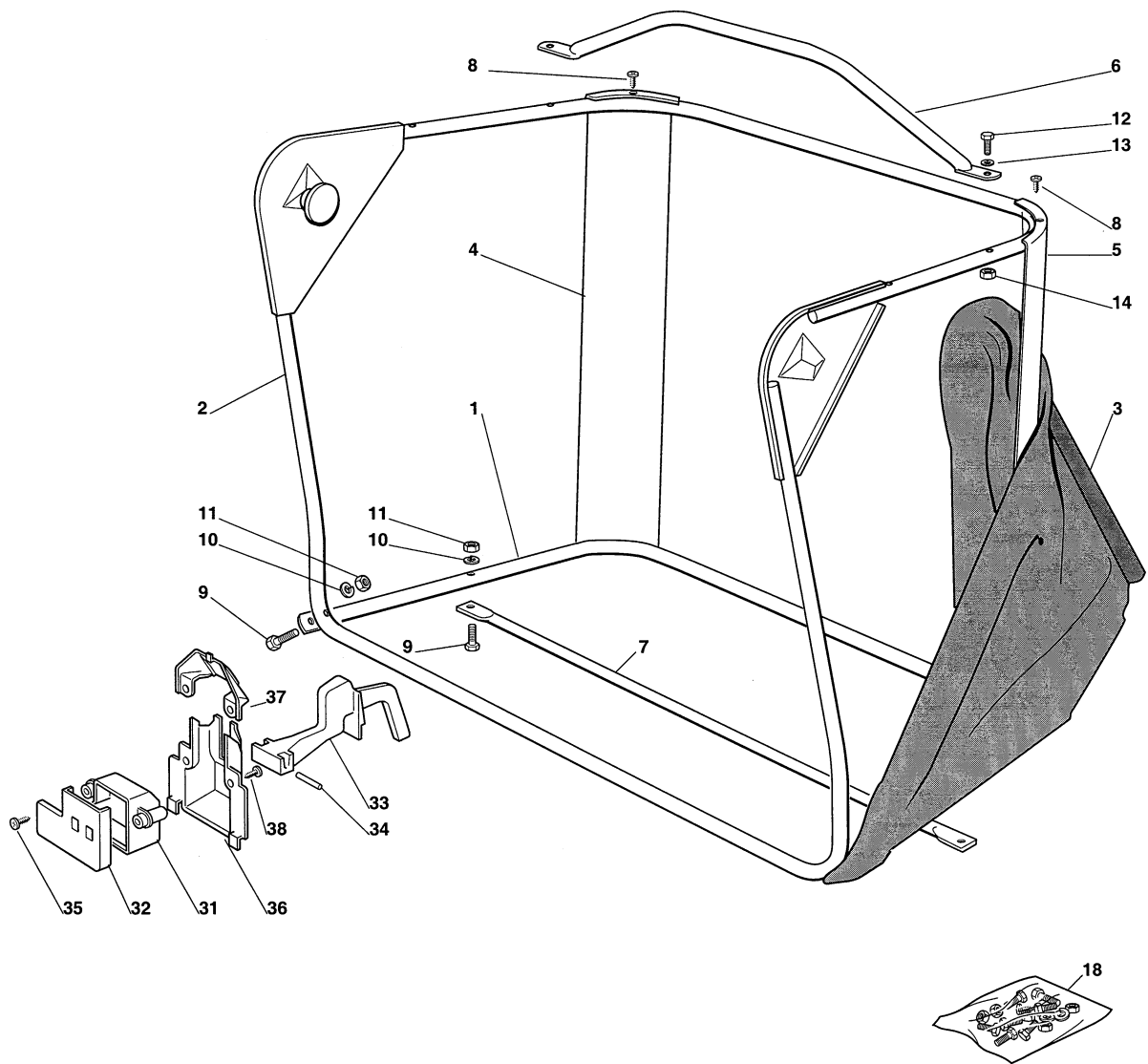
Utgåva Issue 2004- 13		Bildnr Picture No 1232B		GARDEN COMBI GARDEN COMBI HST AGGREGATSLYFT		GARDEN COMBI GARDEN COMBI HST MOWER DECK LIFT		Sida Page 52	
Pos. Fig.	Antal/Quantity				Art nr Part No	Benämning	Description	Sats Kit	Anmärkning Notes
	2511 2512								
1	1				1136- 1291- 01	Lyftaxel .....	Lift axle .....		
2	2				1136- 0406- 01	Bygel .....	Clamp .....		
3	4				9847- 8119- 16	Skruv .....	Screw .....		
4	1				1136- 0095- 01	Låsnål .....	Hair pin .....		
5	1				1136- 0308- 01	Bricka .....	Washer .....		
6	1				9747- 1031- 02	Låsmutter .....	Lock nut .....		
7	2				1136- 0308- 01	Bricka .....	Washer .....		
8	1				1136- 0559- 01	Lyftaxel .....	Lift axle .....		
9	2				1136- 0406- 01	Bygel .....	Clamp .....		
10	4				9847- 8119- 16	Skruv .....	Screw .....		
11	1				1136- 0226- 01	Ledbult .....	Pivot bolt .....		
12	2				1136- 0308- 01	Bricka .....	Washer .....		
13	1				9747- 1031- 02	Låsmutter .....	Lock nut .....		
14	1				1136- 0347- 01	Lyftlänk .....	Lift tie rod .....		
15	1				9799- 1031- 02	Mutter .....	Nut .....		
16	1				9747- 1031- 02	Låsmutter .....	Lock nut .....		
17	2				1136- 0087- 01	Bricka .....	Washer .....		
18	1				1136- 0095- 01	Låsnål .....	Hair pin .....		
19	1				1136- 0563- 01	Lyftstång .....	Lift rod .....		
20	1				1136- 0235- 01	Ledbult .....	Pivot bolt .....		
21	1				9799- 0831- 02	Mutter .....	Nut .....		
22	1				9747- 0831- 02	Mutter .....	Lock nut .....		
23	1				1136- 0009- 01	Låsplatta .....	Lock plate .....		
24	2				1136- 0309- 01	Bricka .....	Washer .....		
25	2				1136- 0309- 01	Bricka .....	Washer .....		
26	1				9747- 0831- 02	Mutter .....	Lock nut .....		
27	1				1136- 0579- 01	Lyftspak .....	Lift lever .....		
28	1				1136- 0197- 01	Handtag .....	Knob .....		
29	1				9997- 0635- 12	Skruv .....	Screw .....		
30	1				9747- 0631- 02	Låsmutter .....	Lock nut .....		
31	1				1136- 0396- 01	Fjäder .....	Spring .....		
32	1				1136- 1268- 01	Sprint .....	Pin .....		



Utgåva Issue 2004- 13		Bildnr Picture No 1233B		GARDEN COMBI GARDEN COMBI HST AGGREGATSINKOPPLING		GARDEN COMBI GARDEN COMBI HST MOWER DECK ENGAGEMENT		Sida Page 54	
Pos. Fig.	Antal/Quantity				Art nr Part No	Benämning	Description	Sats Kit	Anmärkning Notes
	2511 2512								
1	1				1136-0580-01	Inkopplingsspak .....	PTO lever .....		
2	1				1136-0197-01	Handtag .....	Knob .....		
3	1				1136-0560-01	Axel .....	Axle .....		
4	1				1136-0212-01	Fjäder.....	Spring .....		
5	1				9997-0880-16	Skruv .....	Screw .....		
6	1				9747-0831-02	Mutter.....	Lock nut .....		
7	2				1136-0256-01	Bygel .....	Plate .....		
8	4				9847-8016-16	Skruv .....	Screw .....		
9	1				1136-0964-01	Fjäder.....	Spring .....		
10	1				1136-0398-01	Glidblock .....	Shoe.....		
11	2				9997-0616-16	Skruv .....	Screw .....		
12	2				9747-0631-02	Låsmutter .....	Lock nut .....		
13	1				1136-1252-01	Stång .....	Rod .....		
14	1				1136-0093-01	Kulled .....	Ball joint.....		
15	1				1136-1275-01	Bygel .....	Clamp.....		
16	1				1136-1265-01	Fjäder.....	Spring .....		
17	1				9699-0090-02	Planbricka.....	Flat washer .....		
18	1				1136-1267-01	Ledbult .....	Pivot pin.....		
19	1				9799-0831-02	Mutter.....	Nut .....		
20	1				9747-0831-02	Mutter.....	Lock nut .....		
21	1				9683-0030-02	Låsbricka .....	Lock washer .....		
22	1				9799-0831-02	Mutter.....	Nut .....		
23	1				1136-0308-01	Bricka .....	Washer .....		
24	1				1136-0095-01	Låsnål .....	Hair pin .....		
25	1				1136-0306-01	Bricka .....	Washer .....		
31	1				1136-1253-01	Arm .....	Lever .....		
32	1				1136-0373-01	Bussning .....	Bushing.....		
33	1				9997-0845-12	Skruv .....	Screw .....		
34	1				9699-0056-02	Planbricka.....	Flat washer .....		
35	1				1136-0089-01	Bricka .....	Washer .....		
36	1				1136-0014-01	Bricka .....	Washer.....		
37	1				9747-0831-02	Mutter.....	Lock nut .....		
38	1				1136-1271-01	Spännrulle .....	Idler pulley .....		
39	1				1136-1213-01	Skruv .....	Screw .....		
40	1				9699-0056-02	Planbricka.....	Flat washer .....		
41	1				9739-0831-22	Mutter.....	Nut .....		
42	1				1136-0431-01	Kilrem .....	V- belt.....		
61	1				1136-0574-01	Knivbroms .....	Blade brake .....		
62	1				1136-0079-01	Bussning .....	Bushing.....		
63	1				1136-0089-01	Bricka .....	Washer .....		
64	1				9997-0820-16	Skruv .....	Screw .....		
65	1				9712-0831-02	Låsmutter .....	Lock nut .....		
66	1				1136-1251-01	Stång .....	Rod .....		
67	1				1136-0235-01	Ledbult .....	Pivot bolt.....		
68	1				9799-0831-02	Mutter.....	Nut .....		
69	1				9747-0831-02	Mutter.....	Lock nut .....		
70	2				1136-0309-01	Bricka .....	Washer .....		
71	1				9747-0831-02	Mutter.....	Lock nut .....		
72	1				1136-0095-01	Låsnål .....	Hair pin .....		

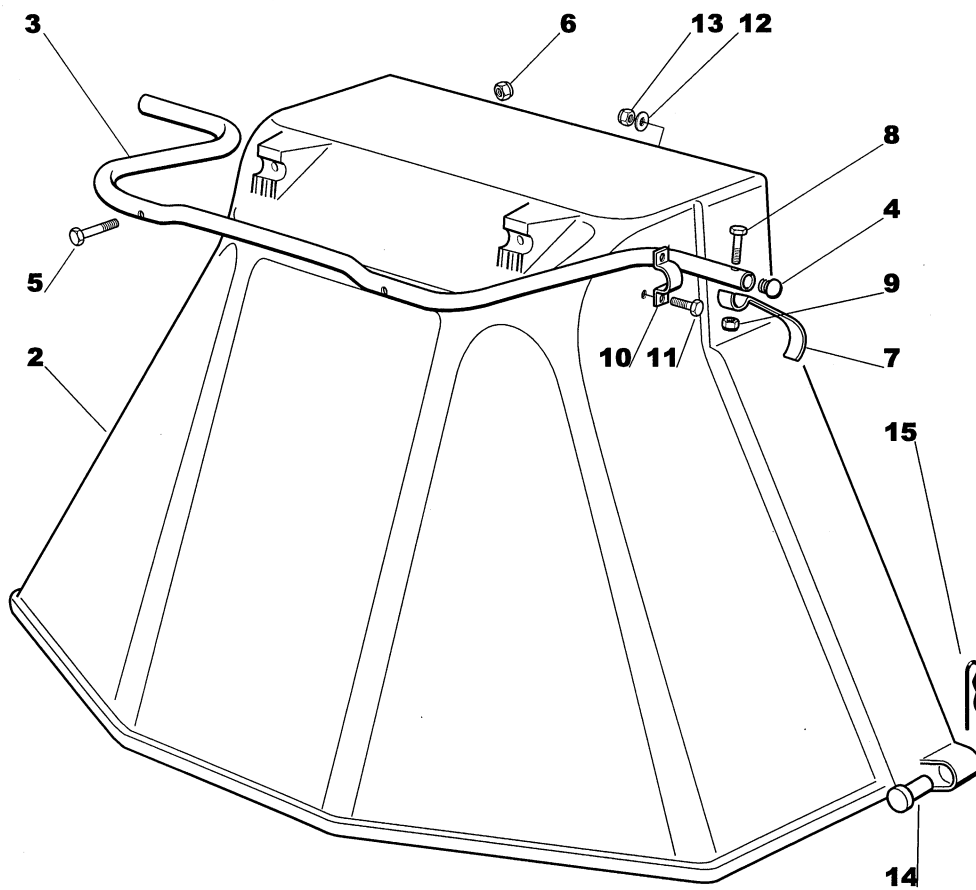


Utgåva Issue  2004- 13		Bildnr Picture No  1234A		GARDEN COMBI GARDEN COMBI HST KLIPPAGGREGAT		GARDEN COMBI GARDEN COMBI HST MOWER DECK		Sida Page  56	
Pos. Fig.	Antal/Quantity				Art nr Part No	Benämning	Description	Sats Kit	Anmärkning Notes
	2511 2512								
1	1				1136-1261-01	Klippaggregatskåpa .....	Mower deck casing .....		Inkl. pos 2 - 4
2	1				1136-0120-01	• Vattenslangnippel .....	• Water hose connection.....		
3	1				1136-0068-01	• O- ring .....	• O- ring .....		Inkl. pos 10 - 14
4	1				1136-0012-01	• Nit.....	• Rivet.....		
5	1				1136-0372-01	Utkasttratt.....	Conveyor inlet .....		
6	6				9898-0620-16	Skruv .....	Screw .....		
7	6				9699-0060-02	Planbricka.....	Flat washer .....		
8	6				9747-0631-02	Låsmutter .....	Lock nut .....		
9	1				1136-0573-01	Lagerbox kpl .....	Bearing box assy .....		
10	1				1136-0364-01	• Knivaxel .....	• Blade shaft .....		
12	2				1136-0069-01	• Kullager .....	• Ball bearing .....		
13	1				1136-0176-01	• Dammskydd .....	• Dust cover.....		
14	1				9650-0020-04	• Spårring.....	• Circlip .....		
15	4				9898-0825-16	Skruv .....	Screw .....		
17	4				9739-0831-22	Mutter.....	Nut .....		
18	1				1136-0221-01	Knivfäste.....	Blade hub .....		
19	1				9600-0014-00	Kil .....	Key .....		
20	1				1136-1295-01	Kniv .....	Blade .....		
21	1				1136-0083-01	Fjäderbricka .....	Elastic washer .....		
22	1				1136-0015-01	Bricka .....	Washer .....		
23	1				9987-5238-12	Knivbult .....	Blade bolt .....		
24	1				1136-1272-01	Remskiva .....	Belt pulley .....		
25	1				1136-0001-01	Kil .....	Key .....		
26	1				9997-0820-16	Skruv .....	Screw .....		
27	1				1136-0307-01	Bricka .....	Washer .....		
28	1				9683-0030-02	Låsbricka .....	Lock washer .....		
29	1				1136-0399-01	Luftintag .....	Air intake grill .....		
30	4				9898-0616-16	Skruv .....	Screw .....		
31	4				9699-0028-02	Planbricka.....	Flat washer .....		
32	4				9747-0631-02	Låsmutter .....	Lock nut .....		
33	1				9997-1090-12	Skruv .....	Screw .....		
34	2				1136-0015-01	Bricka .....	Washer .....		
35	1				1136-0002-01	Mutter.....	Nut .....		
36	1				1136-0226-01	Ledbult .....	Pivot bolt.....		
37	1				9799-1031-02	Mutter.....	Nut .....		
38	1				9747-1031-02	Låsmutter .....	Lock nut .....		
39	1				9683-0040-02	Låsbricka .....	Lock washer .....		
51	1				1136-0377-01	Utkaströr .....	Conveyor .....		
52	1				1136-0384-01	Deflektor .....	Deflector .....		
53	8				9836-9618-12	Skruv .....	Screw .....		
54	1				1136-0401-01	Axel .....	Pin .....		
55	2				1136-0095-01	Låsnål .....	Hair pin .....		



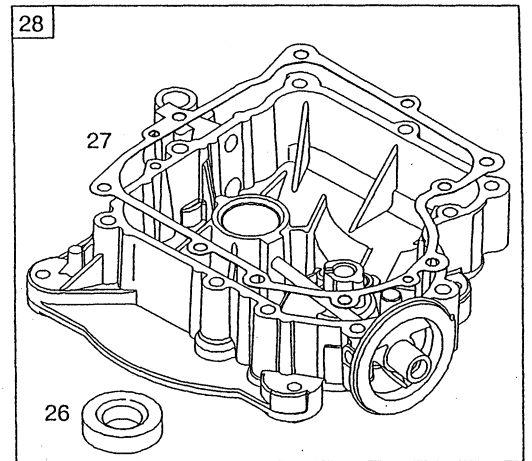
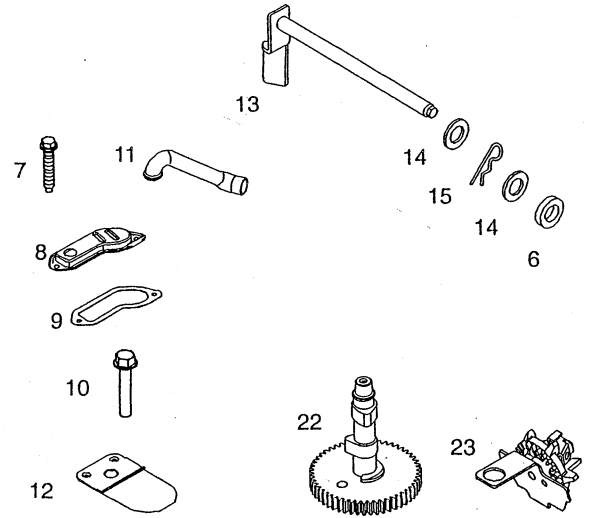
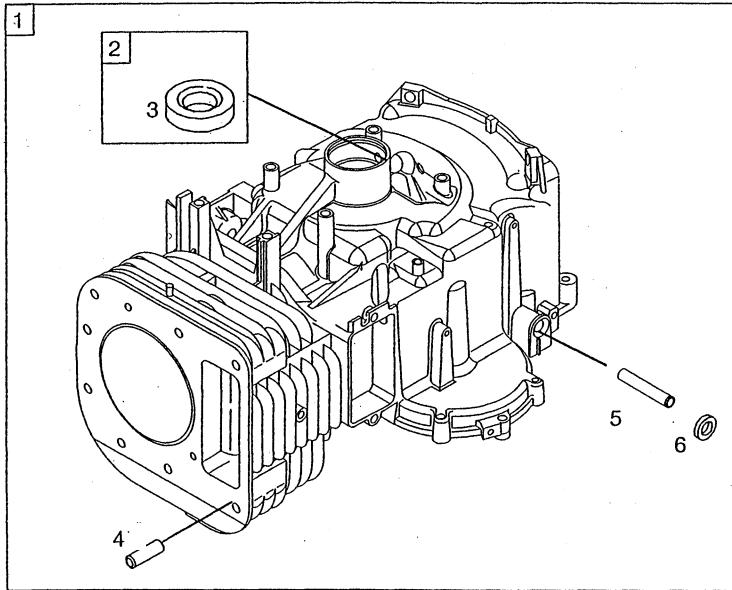


Utgåva Issue  2004- 13		Bildnr Picture No  1235B		GARDEN COMBI GARDEN COMBI HST UPPSAMLARE		GARDEN COMBI GARDEN COMBI HST GRASS CATCHER		Sida Page  58	
Pos. Fig.	Antal/Quantity				Art nr Part No	Benämning	Description	Sats Kit	Anmärkning Notes
	2511 2512								
1	1				1136-0593-01	Ram- nedre .....	Frame- lower .....		Inkl. pos 8 - 14
2	1				1136-0594-01	Ram- övre .....	Frame- upper .....		
3	1				1136-0569-01	Uppsamlingssäck .....	Grass bag .....		
4	1				1136-0362-01	Vinkelstöd- hö .....	Angle support- RH .....		
5	1				1136-0363-01	Vinkelstöd- vä .....	Angle support- LH .....		
6	1				1136-0264-01	Stag .....	Rod .....		
7	1				1136-0587-01	Förstärkningsstag .....	Reinforcement rod .....		
8	4				9847-8116-16	• Skruv .....	• Screw .....		
9	4				9997-0630-12	• Skruv .....	• Screw .....		
10	4				9683-0010-02	• Bricka .....	• Washer .....		
11	4				9799-0631-02	• Mutter .....	• Nut .....		
12	2				9997-0635-12	• Skruv .....	• Screw .....		
13	2				9699-0035-02	• Planbricka .....	• Flat washer .....		
14	2				9747-0631-02	• Låsmutter .....	• Lock nut .....		
18	1				1136-0601-01	Skruvsats .....	Screw set .....		
31	1				1136-0280-01	Brytarskydd .....	Micro protection .....		
32	1				1136-0281-01	Skyddslock .....	Protection cover .....		
33	1				1136-0186-01	Brytararm .....	Switch lever .....		
34	1				1136-0007-01	Axel .....	Pin .....		
35	1				9847-8013-16	Skruv .....	Screw .....		
36	1				1136-0282-01	Brytarskydd .....	Micro protection .....		
37	1				1136-0283-01	Skyddslock .....	Protection cover .....		
38	2				9847-8013-16	Skruv .....	Screw .....		

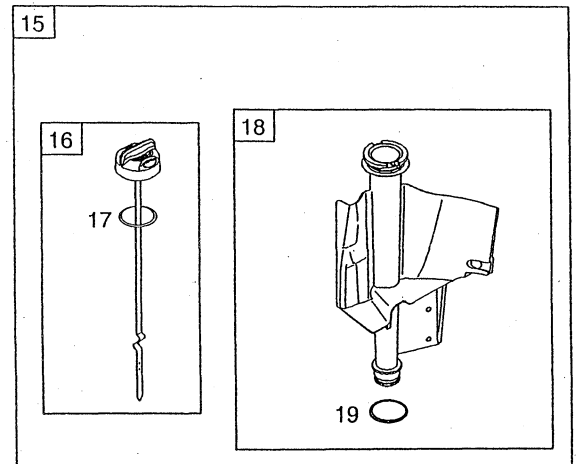
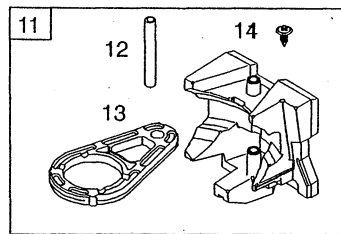
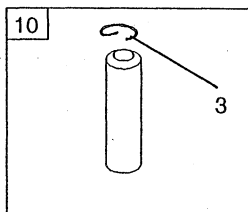
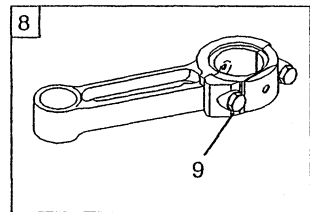
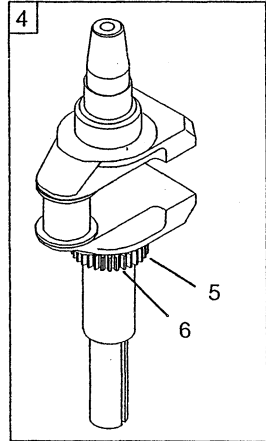
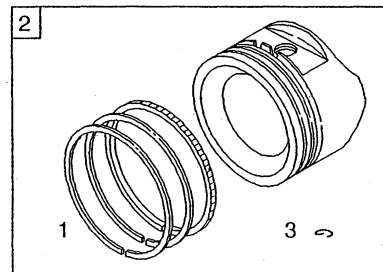


Utgåva Issue  2004- 13		Bildnr Picture No  1248		DEFLEKTOR ART.NR 13- 0916- 11		DEFLECTOR ART.NR 13- 0916- 11		Sida Page  150	
Pos. Fig.	Antal/Quantity				Art nr Part No	Benämning	Description	Sats Kit	Anmärkning Notes
	0916								
2	1				1136-0584-01	Utkastskydd.....	Ejection guard .....		
3	1				1136-0425-01	Stödrör .....	Support .....		
4	2				1136-0062-01	Plugg .....	Cap .....		
5	2				9997-0635-12	Skruv .....	Screw .....		
6	2				9747-0631-02	Låsmutter .....	Lock nut .....		
7	1				1136-0257-01	Bygel .....	Plate .....		
8	1				9997-0625-16	Skruv .....	Screw .....		
9	1				9747-0631-02	Låsmutter .....	Lock nut .....		
10	2				1136-0256-01	Bygel .....	Plate .....		
11	4				9997-0516-16	Skruv .....	Screw .....		
12	4				9699-0018-02	Bricka .....	Washer .....		
13	4				9747-0531-02	Mutter.....	Nut .....		
14	2				1136-0229-01	Sprint.....	Pin .....		
15	2				9598-0002-02	Låsnål.....	Pin lock .....		

A

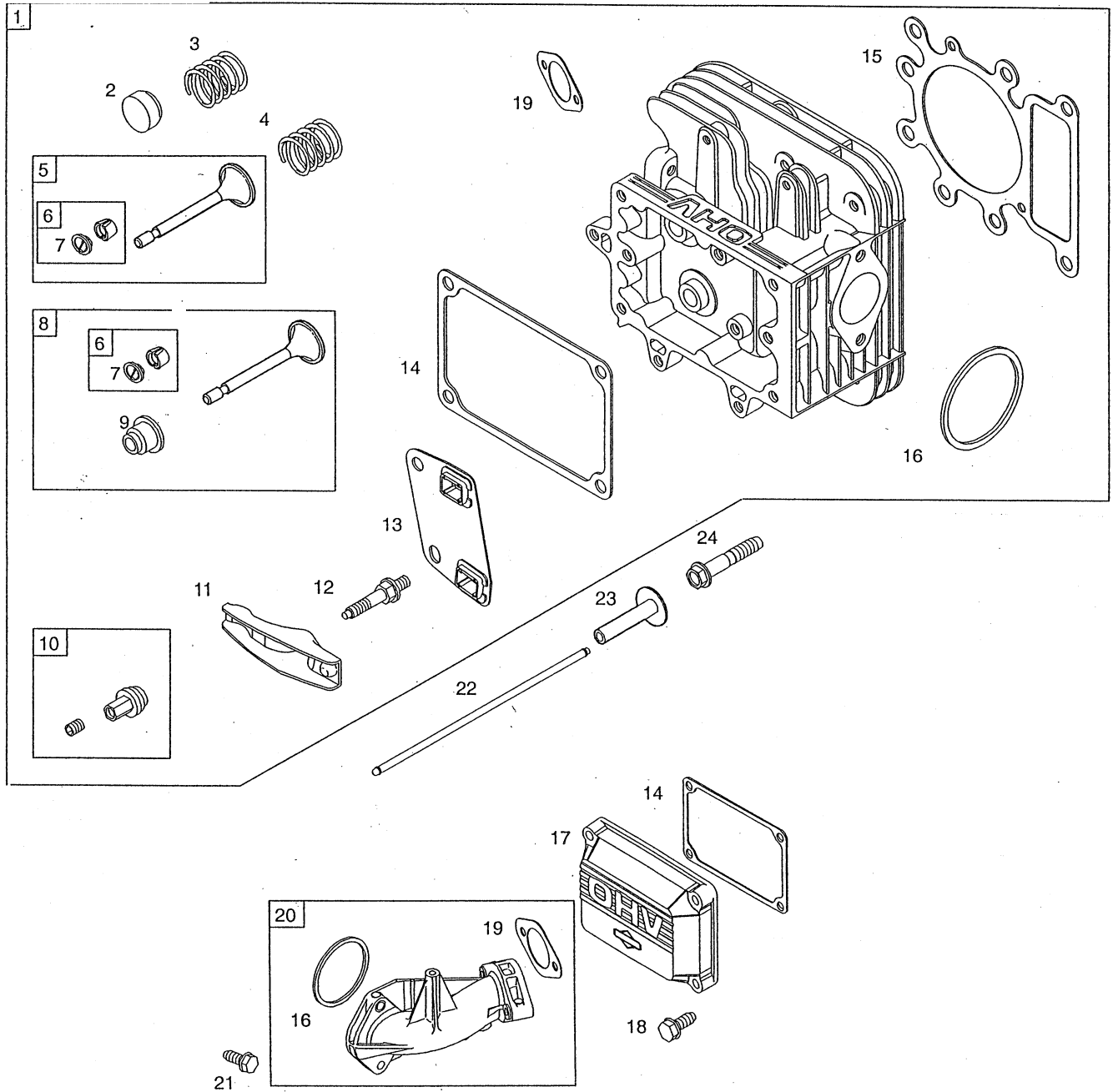


B



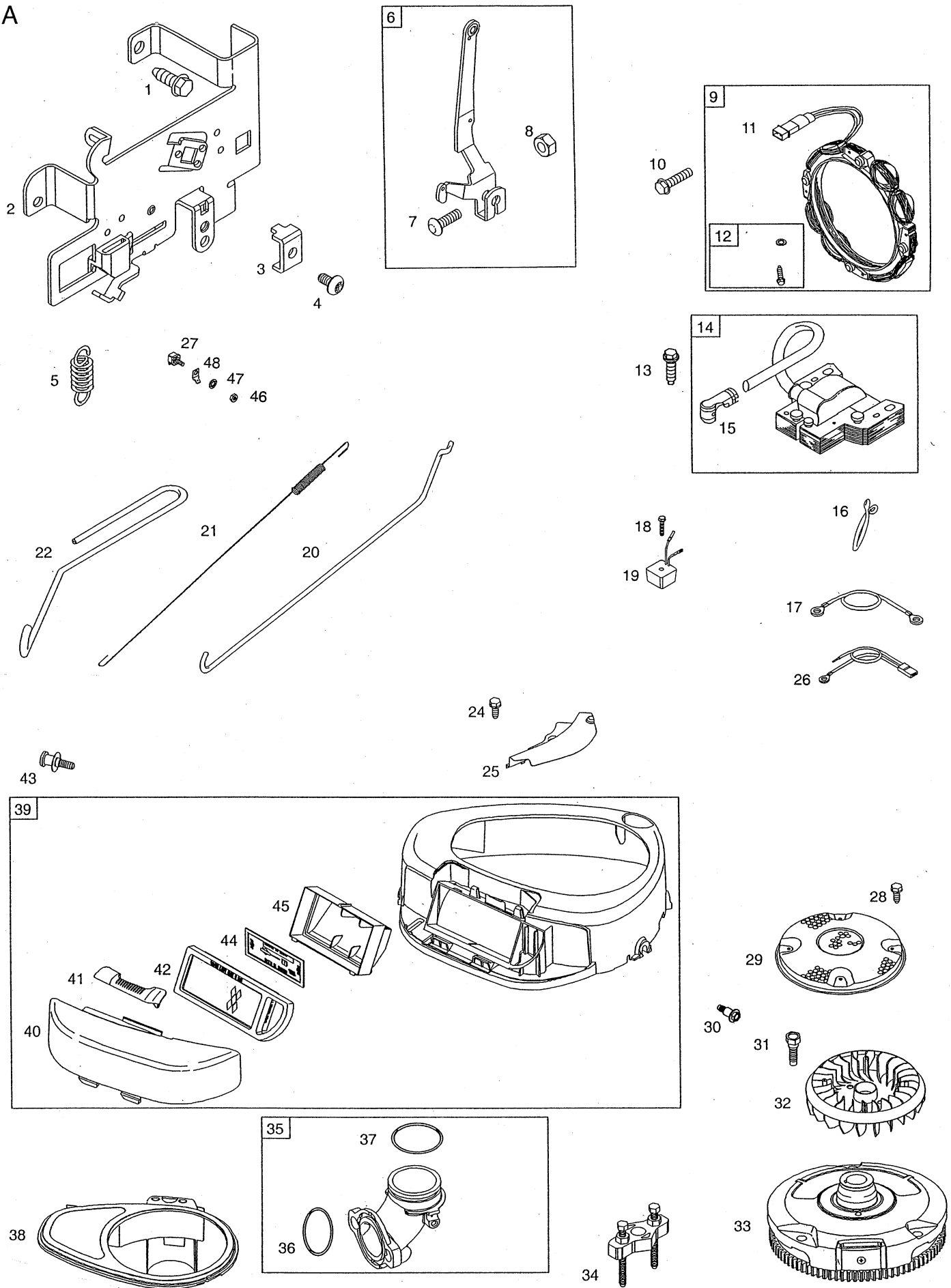
Utgåva Issue		Bildnr Picture No		BRIGGS & STRATTON 21A907 CYLINDER (A) VEVAXEL (B)		BRIGGS & STRATTON 21A907 CYLINDER (A) CRANKSHAFT (B)		Sida Page	
2004- 13		1692						196	
Pos. Fig.	Antal/Quantity				Art nr Part No	Benämning	Description	Sats Kit	Anmärkning Notes
	21A 907- 0146								
A01	1				697377	Cylinder kpl.....	Cylinder assy.....		
A02	1				399265	• Bussning.....	• Bushing.....		
A03	1				391086	• • Tätningsring.....	• • Seal.....		
A04	2				690959	• Tapp.....	• Locating pin.....		
A05	1				697144	• Bussning.....	• Bushing.....		
A06	1				692407	• Tätning.....	• Seal.....		
A07	2				697157	Skruv.....	Screw.....		
A08	1				697112	Lock.....	Cover.....		
A09	1				697109	Packning.....	Gasket.....		
A10	1				697104	Skruv.....	Screw.....		
A11	1				697113	Ventilationsrör.....	Breather tube.....		
A12	1				697124	Ventil.....	Breather reed.....		
A13	1				692012	Regulatoraxel.....	Governor crank.....		
A14	2				691691	Bricka.....	Washer.....		
A15	1				691620	Låsnål.....	Cotter pin.....		
A17	1				691909	Tändstiftshylsa.....	Spark plug boot.....		
A18	1				9400-0244-00	Tändstift.....	Spark plug.....		
A19	1				89838	Tändstiftsnyckel.....	Spark plug wrench.....		
A20	1				697359	Cylinderskydd.....	Cylinder shield.....		
A21	1				691003	Skruv.....	Screw.....		
A22	1				699016	Kamaxel.....	Camshaft.....		
A23	1				691968	Oljekastardrev.....	Oil slinger.....		
A24	1				690946	Avtappningsplugg.....	Oil drain plug.....		
A25	10				692125	Skruv.....	Screw.....		
A26	1				690947	• Tätningsring.....	• Oil seal.....		
A27	1				697110	• Packning.....	• Gasket.....		
A28	1				697106	Oljesump.....	Engine sump.....		
B01	1				698375	• Kolvringsatts.....	• Ring set.....		Standard
B01	1				698377	• Kolvringsatts.....	• Ring set.....		.020" oversize
B02	1				698371	Kolv kpl.....	Piston assy.....		Standard
B02	1				698373	Kolv kpl.....	Piston assy.....		.020" oversize
B03	2				698469	• Låsring.....	• Lock.....		
B04	1				697390	Vevaxel.....	Crankshaft.....		
B05	1				697128	• Drev.....	• Timing gear.....		
B06	1				691639	• Kil.....	• Timing key.....		
B07	1				222698	Kil.....	Key.....		
B08	1				697364	Vevstake.....	Connecting rod.....		
B09	2				692852	• Skruv.....	• Screw.....		
B10	1				697099	Kolvbult.....	Piston pin.....		
B11	1				697391	Motvikt.....	Counterweight.....		
B12	1				697392	• Axel.....	• Pin.....		
B13	1				697607	• Länk.....	• Link.....		
B14	2				697156	• Plugg.....	• Plug.....		
B15	1				697611	Oljesticka kpl.....	Oil dipstick assy.....		
B16	1				697086	• Oljesticka.....	• Oil dipstick.....		
B17	1				691031	• • O- ring.....	• • O- ring.....		
B18	1				697184	• Oljerör.....	• Dipstick tube.....		
B19	1				691032	• Tätning.....	• Tube seal.....		
B20	1				698139	Skruv.....	Screw.....		

A



Utgåva Issue 2004- 13		Bildnr Picture No 1682		BRIGGS & STRATTON 21A907 TOPPLOCK (A)		BRIGGS & STRATTON 21A907 CYLINDER HEAD (A)		Sida Page 198	
Pos. Fig.	Antal/Quantity				Art nr Part No	Benämning	Description	Sats Kit	Anmärkning Notes
	21A 907- 0146								
A01	1				697396	Topplöck .....	Cylinder head .....		
A02	1				691843	• Ventilhuv .....	• Valve cap .....		
A03	1				691279	• Ventilfjäder .....	• Valve spring .....		
A04	1				691279	• Ventilfjäder .....	• Valve spring .....		
A05	1				495856	• Ventil- utblås .....	• Valve-exhaust .....		
A06	2				499586	• Ventilhållare .....	• Valve keeper .....		
A07	2				690964	• Ventilhållare .....	• Valve retainer .....		
A08	1				495857	• Ventil- insug .....	• Valve- intake .....		
A09	1				690968	• Ventiltätning .....	• Valve seal .....		
A10	2				691986	• Vipparmsjustering .....	• Rocker arm adjuster .....		
A11	2				691751	• Vipparm .....	• Rocker arm .....		
A12	2				691095	• Pinnbult .....	• Stud .....		
A13	1				690822	• Stötstångsstyrning .....	• Push rod guide .....		
A14	1				272475	• Packning .....	• Gasket .....		
A15	1				273280	• Topplöckspackning .....	• Cylinder head gasket .....		
A16	1				692138	• O- ring .....	• O- ring .....		
A17	1				692492	Ventilkåpa .....	Rocker cover .....		
A18	4				691108	Skruv .....	Screw .....		
A19	1				692137	• Packning .....	• Gasket .....		
A20	1				697361	Insugningsrör .....	Intake manifold .....		
A21	2				691148	Skruv .....	Screw .....		
A22	1				697394	Stötstång (insug) .....	Push rod (intake) .....		
A22	1				697395	Stötstång (utblås) .....	Push rod (exhaust) .....		
A23	2				690564	Ventillyftare .....	Valve tappet .....		
A24	8				690360	Skruv .....	Screw .....		

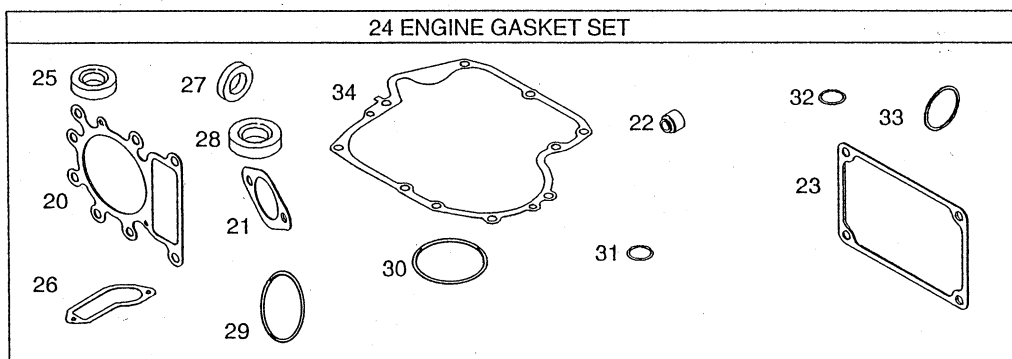
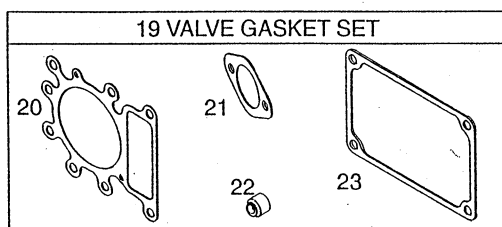
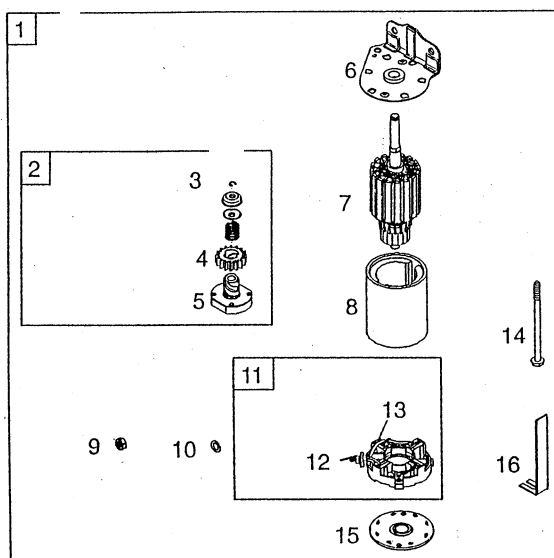
A



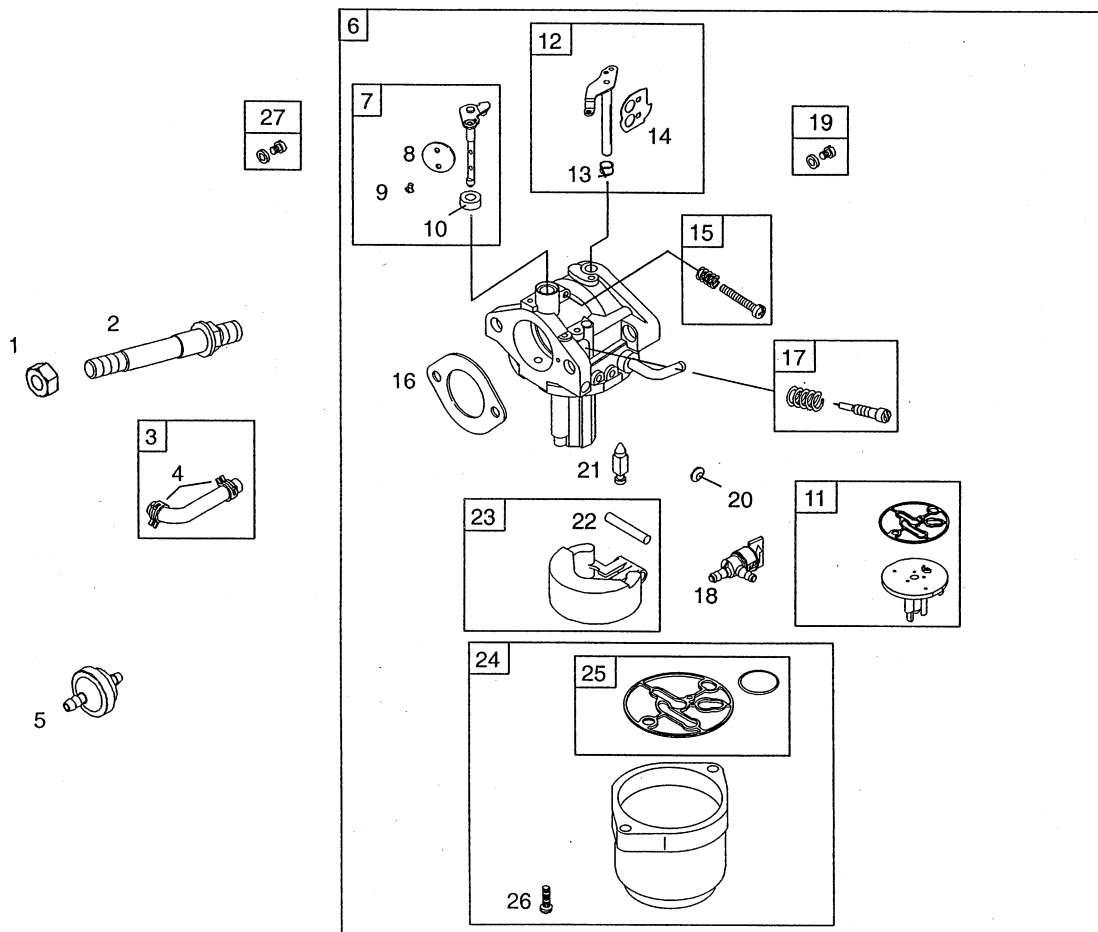


Utgåva Issue  2004- 13		Bildnr Picture No  1693		BRIGGS & STRATTON 21A907 REGULATOR (A) FLÄKTHUS (A)		BRIGGS & STRATTON 21A907 GOVERNOR (A) BLOWER HOUSING (A)		Sida Page  200	
Pos. Fig.	Antal/Quantity				Art nr Part No	Benämning	Description	Sats Kit	Anmärkning Notes
	21A 907- 0146								
A01	2				691693	Skruv .....	Screw .....		
A02	1				694042	Reglageplåt.....	Control bracket .....		
A03	1				691024	Klämma .....	Clamp.....		
A04	1				690804	Skruv .....	Screw .....		
A05	1				692208	Fjäder.....	Spring .....		
A06	1				691374	Regulatorarm.....	Governor lever .....		
A07	1				691119	• Bult .....	• Bolt .....		
A08	1				691251	• Mutter.....	• Nut .....		
A09	1				696457	Generator.....	Alternator .....		
A10	4				691183	Skruv .....	Screw .....		
A11	1				393537	• Anslutning .....	• Connector .....		
A12	1				698516	• Skruv/bricka .....	• Screw/washer kit.....		
A13	2				691061	Skruv .....	Screw .....		
A14	1				492341	Tändsystem .....	Armature magneto .....		
A15	1				493880	• Anslutningshylsa .....	• Terminal .....		
A16	1				694123	Kabelklämma .....	Wire clip.....		
A17	1				697089	Kabel .....	Stop wire.....		
A18	1				697088	Skruv .....	Screw .....		
A19	1				691188	Regulator.....	Regulator .....		
A20	1				691841	Regulatorlänk .....	Governor link .....		
A21	1				691842	Fjäder.....	Spring .....		
A22	1				691840	Chokelänk.....	Choke link .....		
A24	2				691003	Skruv .....	Screw .....		
A25	1				697352	Skydd .....	Guard .....		
A26	1				398808	Kortslutningskabel.....	Ground wire .....		
A27	1				691972	Isolator .....	Insulator.....		
A28	4				697897	Skruv .....	Screw .....		
A29	1				697133	Roterande skydd.....	Rotating screen .....		
A30	2				697102	Skruv .....	Screw .....		
A31	2				690372	Skruv .....	Screw .....		
A32	1				699044	Fläkt.....	Fan .....		
A33	1				698282	Svänghjul.....	Flywheel .....		
A34	1				19203	Avdragare .....	Puller .....		
A35	1				697122	Insugningsrör .....	Intake elbow.....		
A36	1				691917	• O- ring.....	• O- ring .....		
A37	1				697123	• O- ring.....	• O- ring .....		
A38	1				698368	Platta .....	Trim plate.....		
A39	1				697870	Fläkthus .....	Blower housing .....		
A40	1				697420	• Lock.....	• Cover.....		
A41	1				697419	• Spärr.....	• Latch.....		
A42	1				698413	• Luftfilter.....	• Air cleaner filter.....		
A43	1				697103	Skruv .....	Screw .....		
A44	1				697292	• Förfilter .....	• Precleaner filter.....		
A45	1				697155	• Hållare .....	• Retainer.....		
A46	1				691612	Mutter.....	Nut .....		
A47	1				691077	Bricka .....	Washer.....		
A48	1				691084	Anslutningsbleck .....	Ground terminal .....		

A

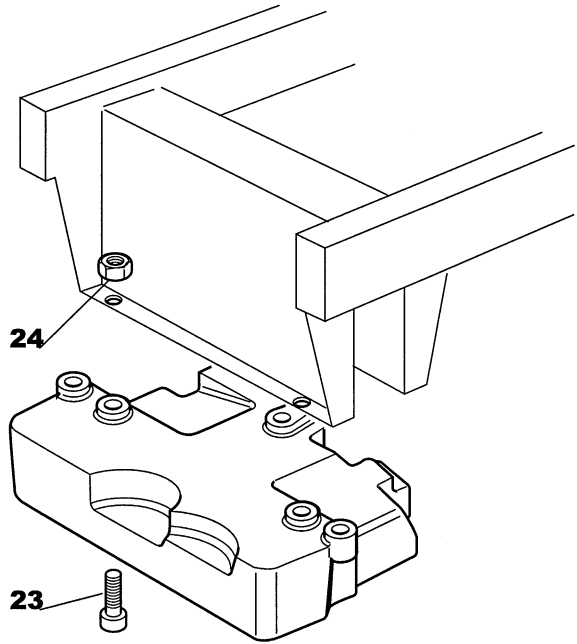


Utgåva Issue  2004- 13		Bildnr Picture No  1684		BRIGGS & STRATTON 21A907 STARTMOTOR (A) PACKNINGSSATS (A)		BRIGGS & STRATTON 21A907 STARTER MOTOR (A) GASKET SET (A)		Sida Page  202	
Pos. Fig.	Antal/Quantity				Art nr Part No	Benämning	Description	Sats Kit	Anmärkning Notes
	21A 907- 0146								
A01	1				693551	Startmotor kpl .....	Starter motor assy .....		
A02	1				693699	• Startdrev .....	• Starter drive .....		
A03	1				691265	• Låsring .....	• Retaining ring .....		
A04	1				693713	• Drev .....	• Pinion gear .....		
A05	1				692024	• Koppling .....	• Drive clutch .....		
A06	1				691283	• Lock .....	• Drive cap .....		
A07	1				692034	• Rotor .....	• Armature .....		
A08	1				693757	• Startmotorhus .....	• Starter housing .....		
A09	1				691029	• Mutter .....	• Nut .....		
A10	1				691261	• Bricka .....	• Washer .....		
A11	1				691293	• Borsthållare .....	• Brush retainer .....		
A12	1				693167	• Mutter .....	• Nut .....		
A13	1				497608	• Släpksats .....	• Brush set .....		
A14	2				690323	• Bult .....	• Bolt .....		
A15	1				691286	• Botten .....	• End cap .....		
A16	1				691532	• Stag .....	• Strap .....		
A17	1				691224	Kabelklämma .....	Wire clip .....		
A18	1				690372	Skruv .....	Screw .....		
A19	1				691581	Packningssats- ventil .....	Gasket set- valve .....		
A20	1				273280	• Topplöckspackning .....	• Cylinder head gasket .....		
A21	1				692137	• Packning .....	• Gasket .....		
A22	1				690968	• Ventilätning .....	• Valve seal .....		
A23	1				272475	• Packning .....	• Gasket .....		
A24	1				697151	Packningssats- motor .....	Gasket set- engine .....		
A25	1				391086	• Tätningsring .....	• Seal .....		
A26	1				697109	• Packning .....	• Gasket .....		
A27	1				692407	• Tätning .....	• Seal .....		
A28	1				690947	• Tätningsring .....	• Oil seal .....		
A29	1				691917	• O- ring .....	• O- ring .....		
A30	1				697123	• O- ring .....	• O- ring .....		
A31	1				691032	• Tätning .....	• Tube seal .....		
A32	1				691031	• O- ring .....	• O- ring .....		
A33	1				692138	• O- ring .....	• O- ring .....		
A34	1				697110	• Packning .....	• Gasket .....		

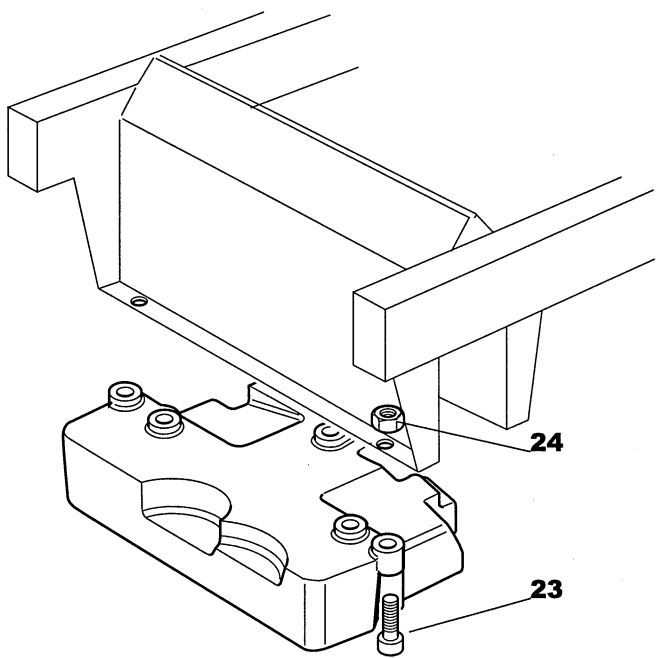


28 CARBURETOR OVERHAUL KIT			
16	30	29	20
9	31	13	25
22		10	
21			

Utgåva Issue  2004- 13		Bildnr Picture No  1694		BRIGGS & STRATTON 21A907 FÖRGASARE (A) PACKNINGSSATS (A)		BRIGGS & STRATTON 21A907 CARBURETTOR (A) GASKET SET (A)		Sida Page  204	
Pos. Fig.	Antal/Quantity				Art nr Part No	Benämning	Description	Sats Kit	Anmärkning Notes
	21A 907- 0146								
A01	2				690958	Mutter.....	Nut.....		Standard
A02	2				690227	Pinnbult.....	Stud.....		
A03	1				697098	Bränsleslang.....	Fuel line.....		
A04	2				95162	• Slangklämma.....	• Hose clamp.....		
A05	1				394358	Bränslefilter.....	Fuelfilter.....		
A06	1				699896	Förgasare kpl.....	Carburettor assy.....		
A07	1				698776	• Spjällaxel.....	• Throttle shaft.....		
A08	1				698774	•• Gasspjäll.....	•• Throttle valve.....		
A09	2				690718	•• Skruv.....	•• Screw.....		
A10	1				698777	•• Tätning.....	•• Seal.....		
A11	1				698780	• Rör.....	• Transfer tube.....		
A12	1				698778	• Chokeyaxel.....	• Choke shaft.....		
A13	1				698779	•• Fjäder/tätning.....	•• Spring/seal.....		
A14	1				698773	•• Chokespjäll.....	•• Choke valve.....		
A15	1				695408	• Tomgångsskruv.....	• Idle speed kit.....		
A16	1				692137	• Packning.....	• Gasket.....		
A17	1				695425	• Justerskruv.....	• Idle mixture kit.....		
A18	1				698183	• Bränslekran.....	• Fuel shut- off valve.....		
A19	1				699897	• Huvudmunstycke.....	• Main jet.....		
A20	1				690727	• Expansionsplugg.....	• Welch plug.....		
A21	1				696136	• Nålventil.....	• Needle valve.....		
A22	1				694918	•• Flottöraxel.....	•• Float hinge pin.....		
A23	1				694914	• Flottör.....	• Float.....		
A24	1				698783	• Flottörhus.....	• Float bowl.....		
A25	1				698781	•• Packning.....	•• Gasket.....		
A26	2				695407	•• Skruv.....	•• Screw.....		
A27	1				699898	Huvudmunstycke.....	Main jet.....	High altitude	
A28	1				698787	Rep.sats- förgasare.....	Overhaul kit- carbur.....		
A29	1				692138	• O- ring.....	• O- ring.....		
A30	1				691917	• O- ring.....	• O- ring.....		
A31	1				697123	• O- ring.....	• O- ring.....		

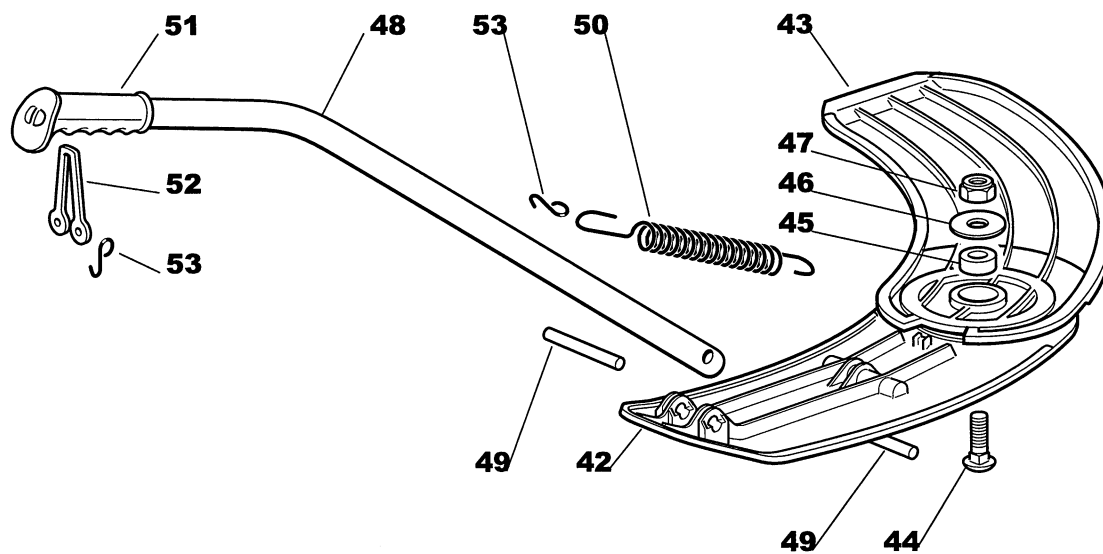


Estate Senator - President - Royal - Pro 22





Utgåva Issue  2004- 13		Bildnr Picture No  1253B		FRONTVIKT ART.NR 13- 0912- 11		FRONT WEIGHT ART.NO 13- 0912- 11		Sida Page  148	
Pos. Fig.	Antal/Quantity				Art nr Part No	Benämning	Description	Sats Kit	Anmärkning Notes
	0912								
23	3				9939- 0850- 12	Skruv .....	Screw .....		
24	3				9747- 0831- 02	Mutter.....	Lock nut .....		





Utgåva Issue  2004- 13		Bildnr Picture No  1558		MULCHINGSATS ART.NR 13- 0934- 11		MULCHING KIT ART.NO 13- 0934- 11		Sida Page  158	
Pos. Fig.	Antal/Quantity				Art nr Part No	Benämning	Description	Sats Kit	Anmärkning Notes
	0934								
42	1				1136-1259-01	Deflektor-bakre .....	Deflector- rear .....		
43	1				1136-1258-01	Deflektor-fram.....	Deflector- front.....		
44	1				9898-0825-16	Skruv .....	Screw .....		
45	1				1136-1255-01	Bussning .....	Bushing.....		
46	1				1136-0089-01	Bricka .....	Washer.....		
47	1				9747-0831-02	Mutter.....	Lock nut.....		
48	1				1136-1263-01	Handtagsrör.....	Handle tube.....		
49	2				1136-1269-01	Sprint.....	Pin .....		
50	1				1136-0214-01	Fjäder.....	Spring .....		
51	1				1136-0882-01	Handtag .....	Handgrip .....		
52	1				1136-0927-01	Elastiskt band .....	Elastic tie.....		
53	3				1136-0877-01	Krok.....	Hook .....		