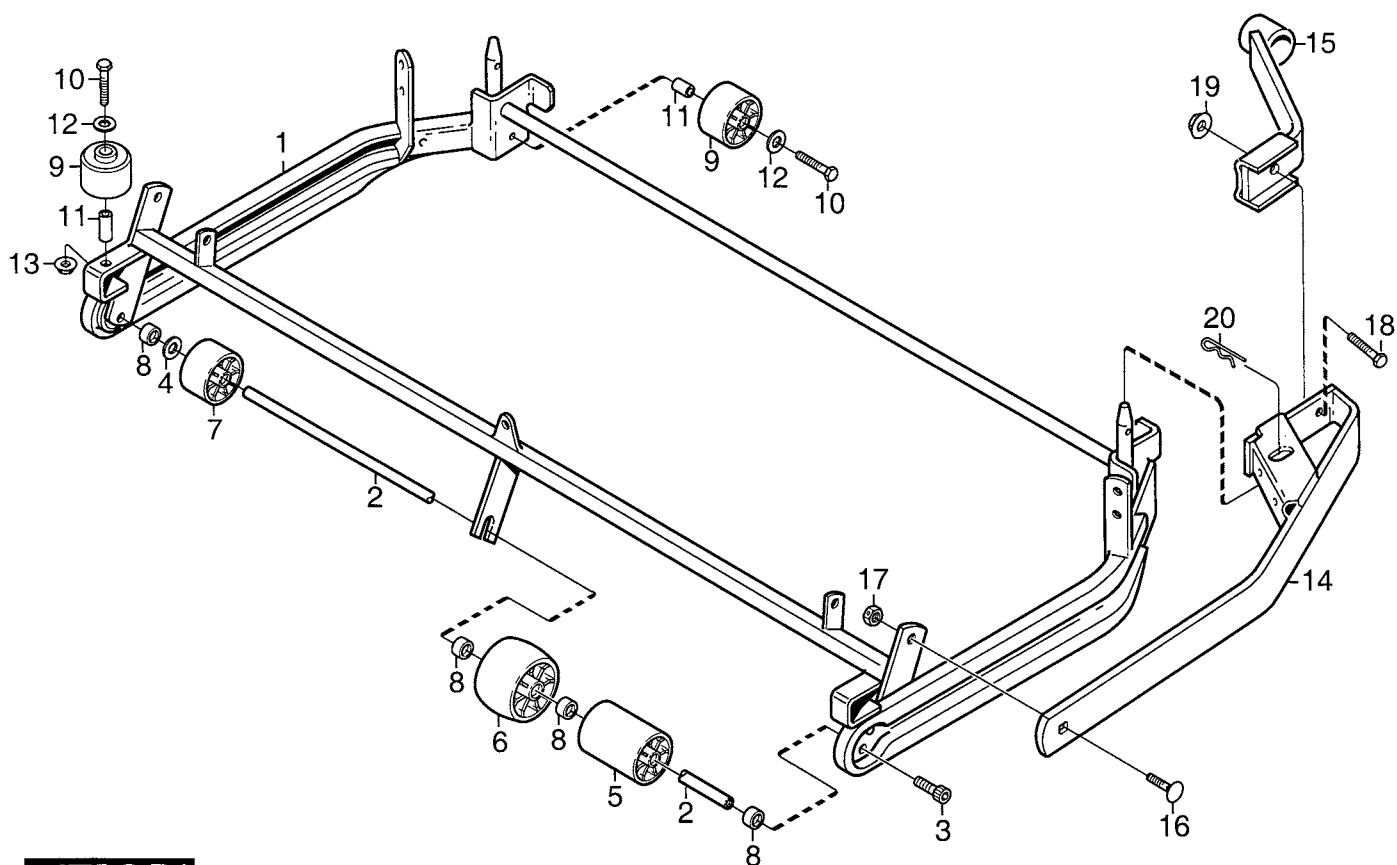
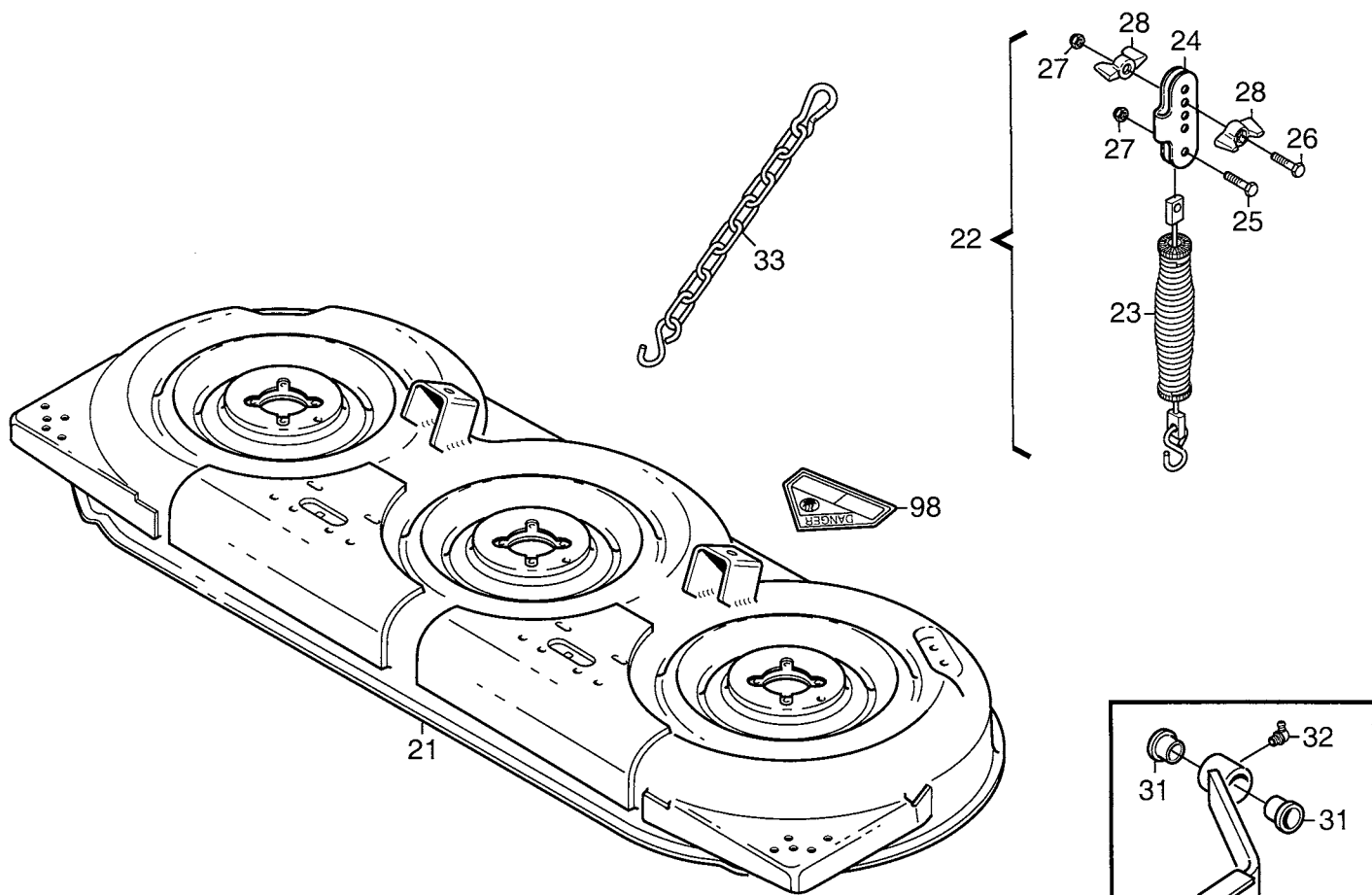


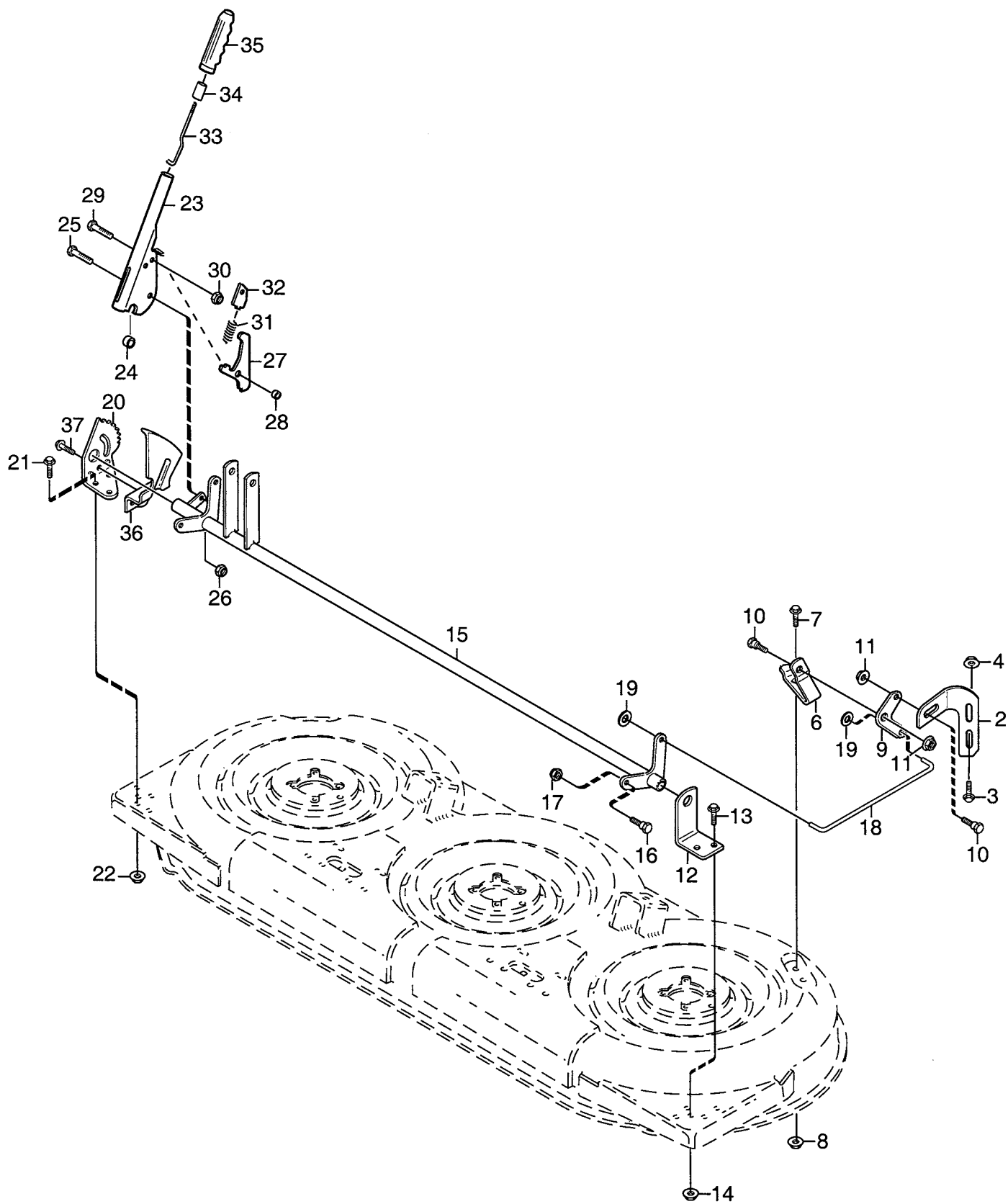
# Genuine Spare Parts

---

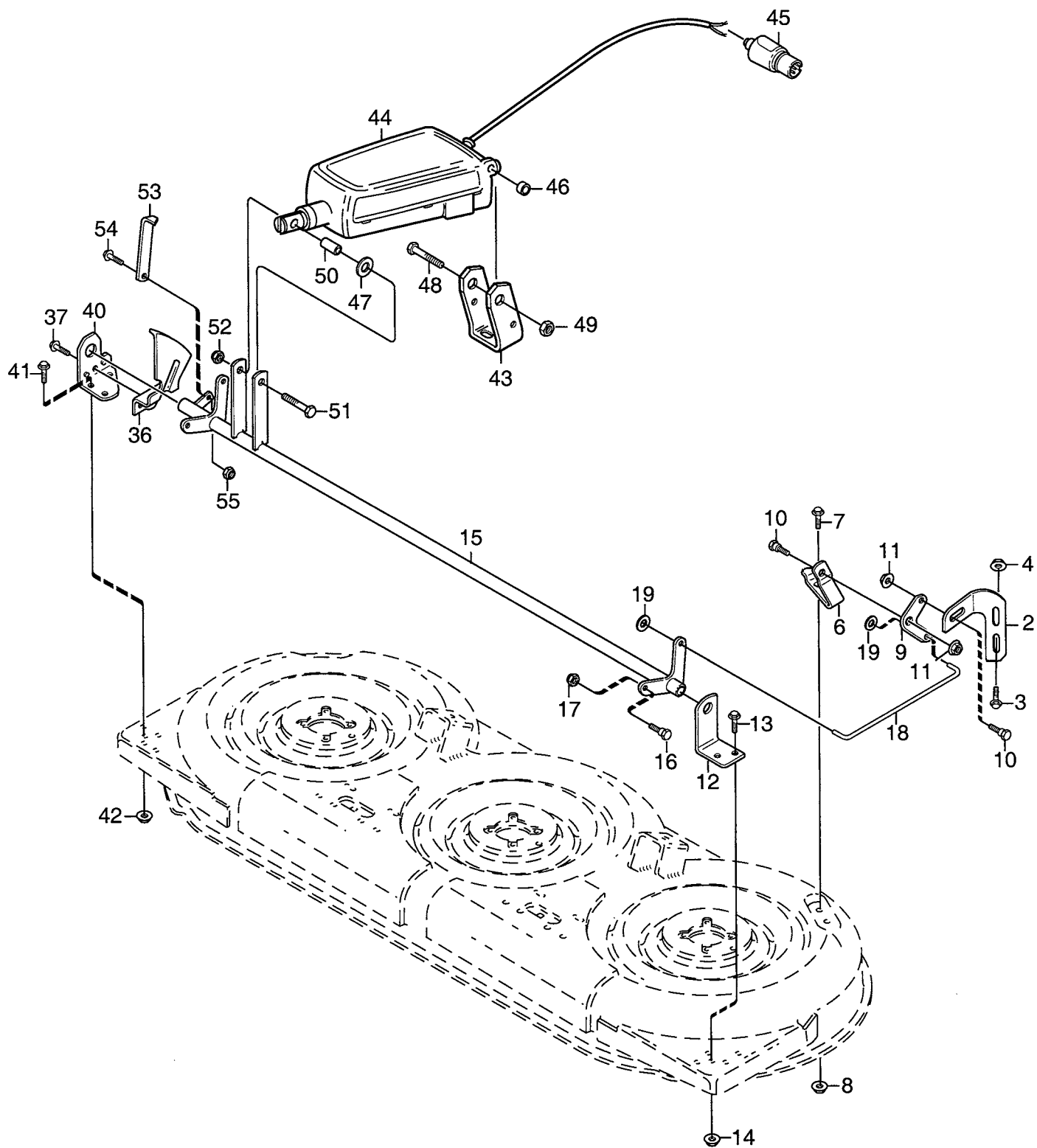




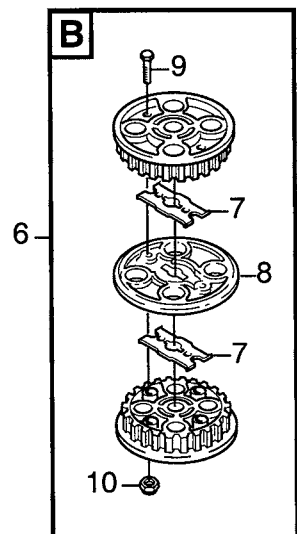
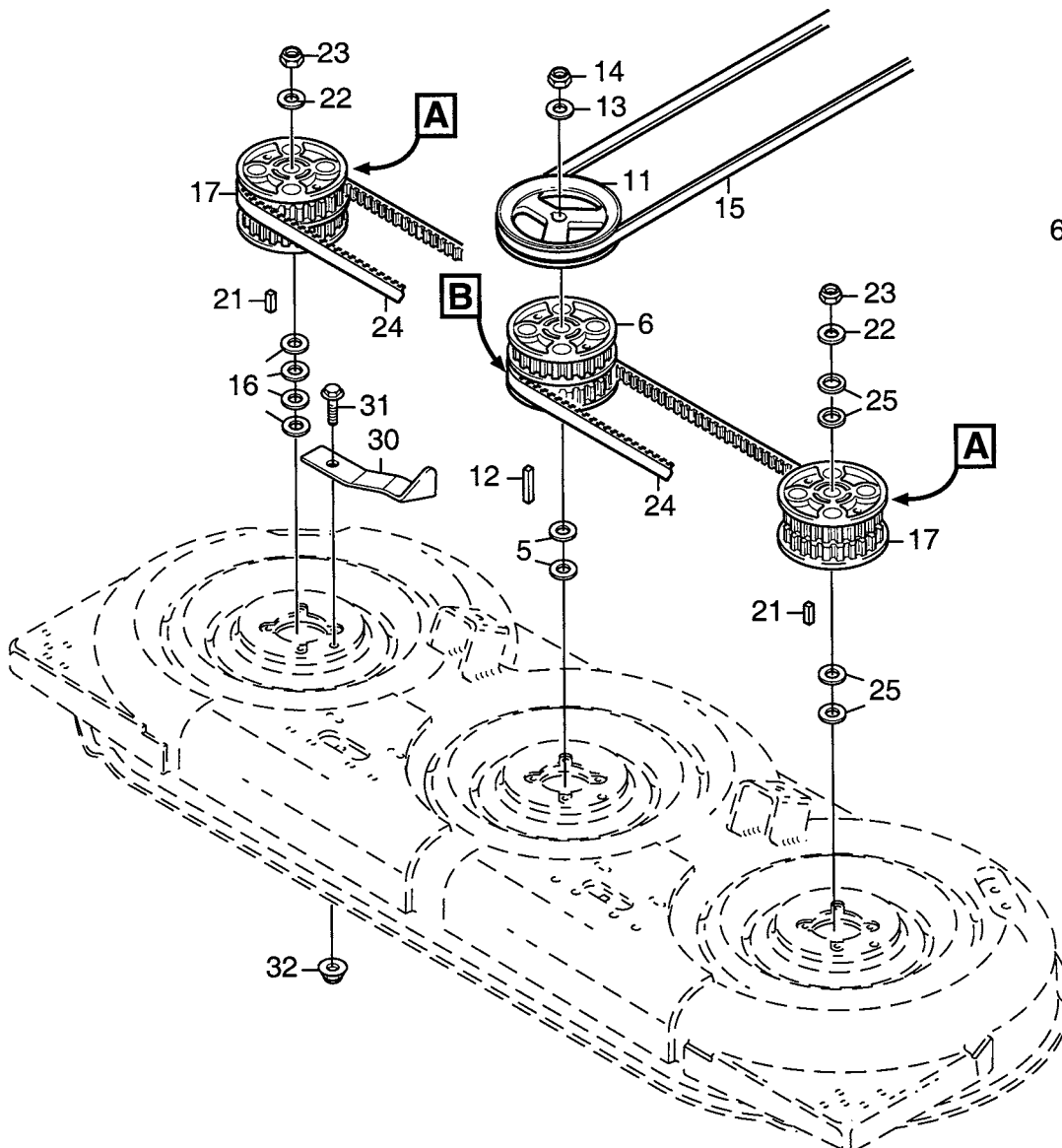
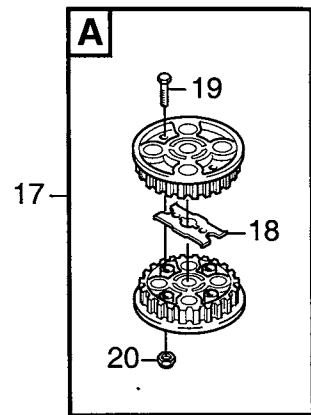
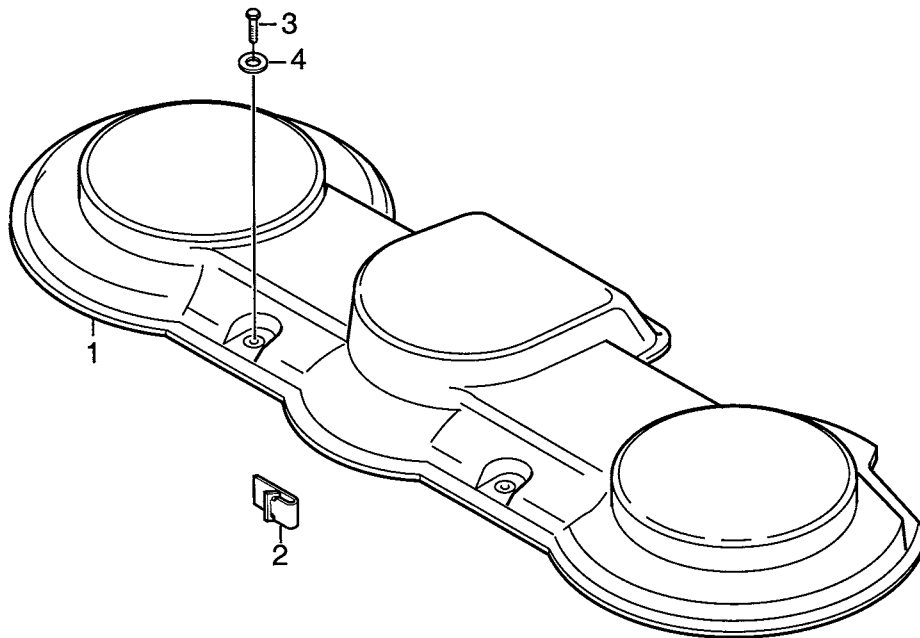
Utgåva Issue 2005- 11		Bildnr Picture No 1514A		PARK KLIPPAGGREGAT 121M RAM		PARK MOWER DECK 121M FRAME		Sida Page 166	
Pos. Fig.	Antal/Quantity				Art nr Part No	Benämning	Description	Sats Kit	Anmärkning Notes
	2915 2921	2920 2928							
1	1	1			1134-3433-01	Ram.....	Frame.....		
2	1	1			1134-0304-06	Axel.....	Shaft.....		
3	2	2			9935-1020-16	Skruv.....	Screw.....		
4	1	1			9699-0104-02	Bricka.....	Washer.....		
5	11	11			1134-2406-01	Skyddsrulle.....	Guard roller.....		
6	3	3			1134-2405-01	Kåphjul.....	Casing wheel.....		
7	1	1			1134-3434-01	Rulle.....	Roller.....		
8	3	3			1134-3047-01	Distans.....	Spacer.....		
9	4	4			1134-3434-01	Rulle.....	Roller.....		
10	4	4			9997-1060-12	Skruv.....	Screw.....		
11	4	4			1134-0041-04	Hylsa.....	Bushing.....		
12	4	4			9699-0030-02	Planbricka.....	Flat washer.....		
13	2	2			9739-1031-22	Mutter.....	Nut.....		
14	2	2			1134-3424-01	Aggregatsfäste.....	Attaching bar.....		
15	2				1134-3710-01	Redskapsfäste.....	Tool attachment.....		
16	2	2			9898-1035-16	Skruv.....	Screw.....		
17	2	2			1134-4775-01	Låsmutter.....	Lock nut.....		
18	2	2			9997-1035-16	Skruv.....	Screw.....		
19	2	2			9739-1031-22	Mutter.....	Nut.....		
20	2	2			9598-0003-02	Låsnål.....	Spring pin.....		
21	1	1			1134-3681-01	Kåpa.....	Mower deck.....		
22	1	1			1134-4688-02	Lyftfjäder kpl.....	Lift spring assy.....		Inkl. pos 23 - 28
23	1	1			1134-4574-01	• Fjäder kpl.....	• Spring assy.....		
24	1	1			1134-4577-01	• Pendel.....	• Spring pivot.....		
25	1	1			9997-0825-16	• Skruv.....	• Screw.....		
26	1	1			9997-0835-12	• Skruv.....	• Screw.....		
27	2	2			9747-0831-02	• Mutter.....	• Lock nut.....		
28	2	2			1134-4481-01	• Vingmutter.....	• Wing nut.....		
30		2			1134-5886-01	Redskapsfäste kpl.....	Tool attachment assy.....		Inkl. pos 31 - 32
31		2			1134-5686-01	• Lagerbussning.....	• Bearing bush.....		
32		1			9501-0502-00	• Smörjnippel.....	• Grease joint.....		
33		1			1134-5952-01	Kedja.....	Chain.....		
98	1	1			9402-3124-00	Varn.decal "Danger".....	Warn. label "Danger".....		
99	1	1			9402-3203-00	Varn.decal m. symbol.....	Warn. label w.Symbols.....		Ej ill/not ill.



Utgåva Issue 2005- 11		Bildnr Picture No 1515		PARK KLIPPAGGREGAT 121M REGLAGE		PARK MOWER DECK 121M CONTROLS		Sida Page 168	
Pos. Fig.	Antal/Quantity				Art nr Part No	Benämning	Description	Sats Kit	Anmärkning Notes
	2915	2920							
1	1				1134-3015-01	Justerstag- hö.....	Adjusting bracket- R.H .....		Ej ill/not ill.
2	1				1134-3015-02	Justerstag- vä .....	Adjusting bracket- L.H.....		
3	4				9959-0820-16	Skruv .....	Screw .....		
4	4				9739-0831-22	Mutter.....	Nut .....		
5	1				1134-5056-01	Fäste- hö .....	Bracket- R.H .....		Ej ill/not ill.
6	1				1134-5056-02	Fäste- vä .....	Bracket- L.H .....		
7	4				9959-0820-16	Skruv .....	Screw .....		
8	4				9739-0831-22	Mutter.....	Nut .....		
9	2				1134-2907-03	Pivotplatta .....	Pivoting plate .....		
10	4				1134-0240-00	Ansattsskruv .....	Shoulder screw .....		
11	4				9747-0831-02	Mutter.....	Lock nut.....		
12	1				1134-2411-01	Fäste .....	Bracket .....		
13	2				9959-0820-16	Skruv .....	Screw .....		
14	2				9739-0831-22	Mutter.....	Nut .....		
15	1				1134-3430-01	Parallellaxel .....	Shaft .....		
16	2				1134-0240-00	Ansattsskruv .....	Shoulder screw .....		
17	2				9747-0831-02	Mutter.....	Lock nut.....		
18	2				1134-1833-02	Stag .....	Rod .....		
19	4				9675-0012-02	Starlock .....	Locking washer.....		
20	1				1134-3011-01	Höjdinställn.segment.....	Height adj. quadrant.....		
21	3				9959-0820-16	Skruv .....	Screw .....		
22	3				9739-0831-22	Mutter.....	Nut .....		
23	1				1134-5215-01	Höjdinställn.spak kpl .....	Height adj.lever assy .....		Inkl. pos 27 - 35
24	1				1134-2427-01	Distans .....	Spacer.....		
25	1				9997-0825-16	Skruv .....	Screw .....		
26	1				9747-0831-02	Mutter.....	Lock nut.....		
27	1				1134-3010-02	• Låssegment.....	• Locking quadrant.....		
28	1				1134-5114-01	• Distans .....	• Spacer.....		
29	1				9997-0620-16	• Skruv .....	• Screw .....		
30	1				9747-0631-02	• Låsmutter .....	• Lock nut.....		
31	1				1134-3262-01	• Tryckfjäder .....	• Compression spring.....		
32	1				1134-3009-01	• Låskil .....	• Locking key .....		
33	1				1134-3041-01	• Reglagestång.....	• Control rod.....		
34	1				1134-3051-01	• Spärrknapp .....	• Locking knob .....		
35	1				9406-0006-00	• Handtag .....	• Handle.....		
36	1				1134-3026-02	Höjdvisningsplåt.....	Height measure plate .....		
37	1				9945-0816-16	Skruv .....	Screw .....		

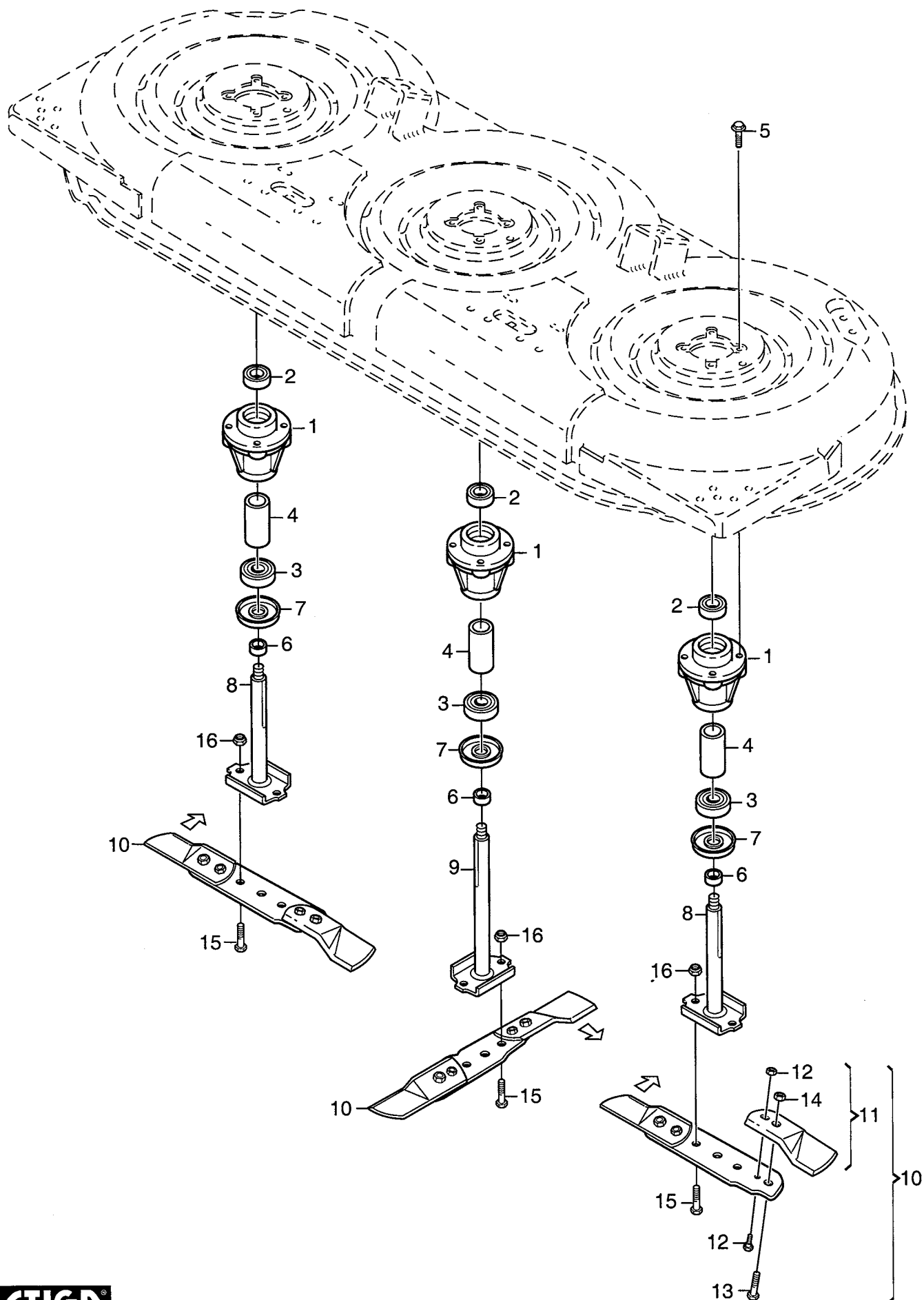


Utgåva Issue 2005- 11		Bildnr Picture No 1516		PARK KLIPPAGGREGAT 121M EL. REGLAGE		PARK MOWER DECK 121M EL. CONTROL		Sida Page 170	
Pos. Fig.	Antal/Quantity				Art nr Part No	Benämning	Description	Sats Kit	Anmärkning Notes
	2921 2928								
1	1				1134-3015-01	Justerstag- hö.....	Adjusting bracket- R.H .....		Ej ill/not ill.
2	1				1134-3015-02	Justerstag- vä .....	Adjusting bracket- L.H.....		
3	4				9959-0820-16	Skruv .....	Screw .....		Ej ill/not ill.
4	4				9739-0831-22	Mutter.....	Nut .....		
5	1				1134-5056-01	Fäste- hö .....	Bracket- R.H .....		Ej ill/not ill.
6	1				1134-5056-02	Fäste- vä .....	Bracket- L.H .....		
7	4				9959-0820-16	Skruv .....	Screw .....		Ej ill/not ill.
8	4				9739-0831-22	Mutter.....	Nut .....		
9	2				1134-2907-03	Pivotplatta .....	Pivoting plate .....		Ej ill/not ill.
10	4				1134-0240-00	Ansattsskruv.....	Shoulder screw .....		
11	4				9739-0831-22	Mutter.....	Nut .....		Ej ill/not ill.
12	1				1134-2411-01	Fäste .....	Bracket .....		
13	2				9959-0820-16	Skruv .....	Screw .....		Ej ill/not ill.
14	2				9739-0831-22	Mutter.....	Nut .....		
15	1				1134-3430-01	Parallellaxel .....	Shaft .....		Ej ill/not ill.
16	2				1134-0240-00	Ansattsskruv.....	Shoulder screw .....		
17	2				9739-0831-22	Mutter.....	Nut .....		Ej ill/not ill.
18	2				1134-1833-02	Stag .....	Rod .....		
19	4				9675-0012-02	Starlock .....	Locking washer.....		Ej ill/not ill.
36	1				1134-3026-02	Höjdvisningsplåt.....	Height measure plate .....		
37	1				9945-0816-16	Skruv .....	Screw .....		Ej ill/not ill.
40	1				1134-3325-01	Lagringsvinkel .....	Bearing angle .....		
41	3				9959-0820-16	Skruv .....	Screw .....		Ej ill/not ill.
42	3				9739-0831-22	Mutter.....	Nut .....		
43	1				1134-4682-01	Fäste .....	Attachment.....		Ej ill/not ill.
44	1				1134-5260-01	Ställdon .....	Electric lifter .....		
45	1				1134-4057-01	• Hankontakt .....	• Male terminal .....		Ej ill/not ill.
46	2				1134-3428-01	Distans .....	Spacer .....		
47	4				1134-4242-01	Distansbricka.....	Spacer washer .....		Ej ill/not ill.
48	1				9997-1270-12	Skruv .....	Screw .....		
49	1				9747-1231-02	Låsmutter .....	Lock nut.....		Ej ill/not ill.
50	1				1134-1565-04	Distans .....	Spacer .....		
51	1				9997-0850-16	Skruv .....	Screw .....		Ej ill/not ill.
52	1				9747-0831-02	Mutter.....	Lock nut.....		
53	1				1134-3328-01	Visare .....	Pointer .....		Ej ill/not ill.
54	1				9959-0816-16	Skruv .....	Screw .....		
55	1				9739-0831-22	Mutter.....	Nut .....		Ej ill/not ill.

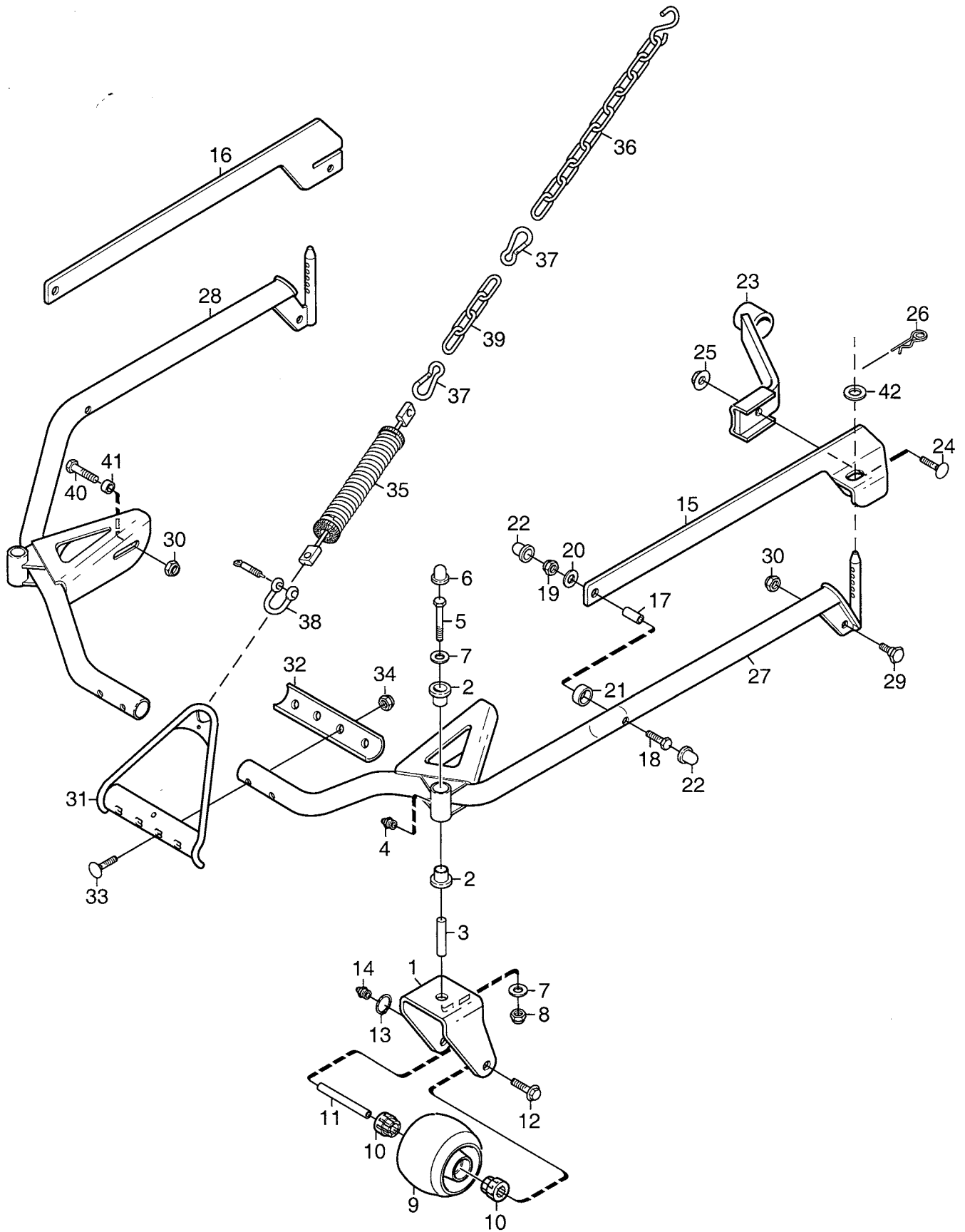




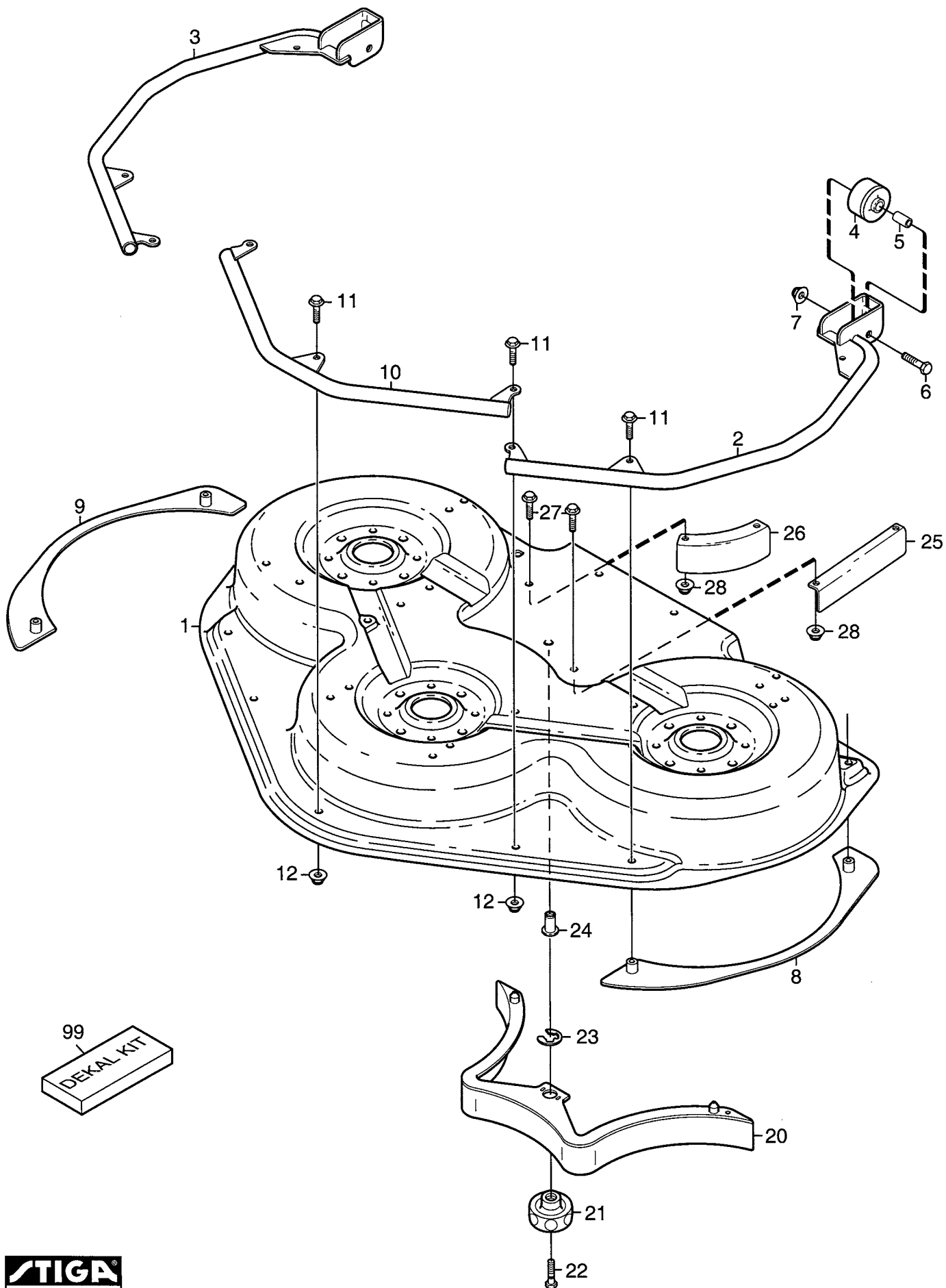
Utgåva Issue  2005- 11		Bildnr Picture No  1517		PARK KLIPPAGGREGAT 121M TRANSMISSION		PARK MOWER DECK 121M TRANSMISSION		Sida Page  172	
Pos. Fig.	Antal/Quantity				Art nr Part No	Benämning	Description	Sats Kit	Anmärkning Notes
	2915 2921	2920 2928							
1	1				1134-3678-02	Transmissionskåpa- grå.....	Transmission cover .....		
1		1			1134-5800-02	Transmissionskåpa .....	Transmission cover .....		
2	3	3			1134-3632-01	Clips- remstyrning .....	Clips- belt guide .....		
3	2	2			9997-0620-16	Skruv .....	Screw .....		
4	2	2			9699-0100-02	Bricka .....	Washer .....		
5	2	2			9699-0104-02	Bricka .....	Washer .....		
6	1	1			1134-3679-02	Kuggremskiva kpl .....	Toothed belt pulley .....		
7	2	2			1134-3597-01	• Medbringare .....	• Reinforcement.....		
8	1	1			1134-3598-01	• Remskivsplatta .....	• Plate- belt pulley .....		
9	2	2			9997-0630-12	• Skruv .....	• Screw .....		
10	2	2			9747-0631-02	• Låsmutter .....	• Lock nut .....		
11	1	1			1134-3419-01	Remskiva .....	Belt pulley .....		
12	1	1			1134-0323-02	Kil .....	Key .....		L = 54 mm
13	1	1			1134-5236-01	Bricka .....	Washer .....		
14	1	1			1134-4775-01	Låsmutter .....	Lock nut .....		
15	1				1134-9045-01	Drivrem .....	V- belt .....		= 9585-0081-00
15		1			1134-9094-01	Drivrem .....	V- belt .....		= 9585-0146-01
16	4	4			9699-0104-02	Bricka .....	Washer .....		
17	2	2			1134-3679-01	Kuggremskiva kpl .....	Toothed belt pulley .....		
18	1	1			1134-3597-01	• Medbringare .....	• Reinforcement.....		
19	2	2			9997-0625-16	• Skruv .....	• Screw .....		
20	2	2			9747-0631-02	• Låsmutter .....	• Lock nut .....		
21	2	2			1134-0323-01	Kil .....	Key .....		L = 25 mm
22	2	2			1134-5236-01	Bricka .....	Washer .....		
23	2	2			1134-4775-01	Låsmutter .....	Lock nut .....		
24	2	2			9585-0085-00	Kuggrem .....	Toothed belt .....		
25	4	4			9699-0104-02	Bricka .....	Washer .....		
30	2	2			1134-3014-01	Remspännare .....	Belt tensioner .....		
31	2	2			9959-0820-16	Skruv .....	Screw .....		
32	2	2			9739-0831-22	Mutter .....	Nut .....		



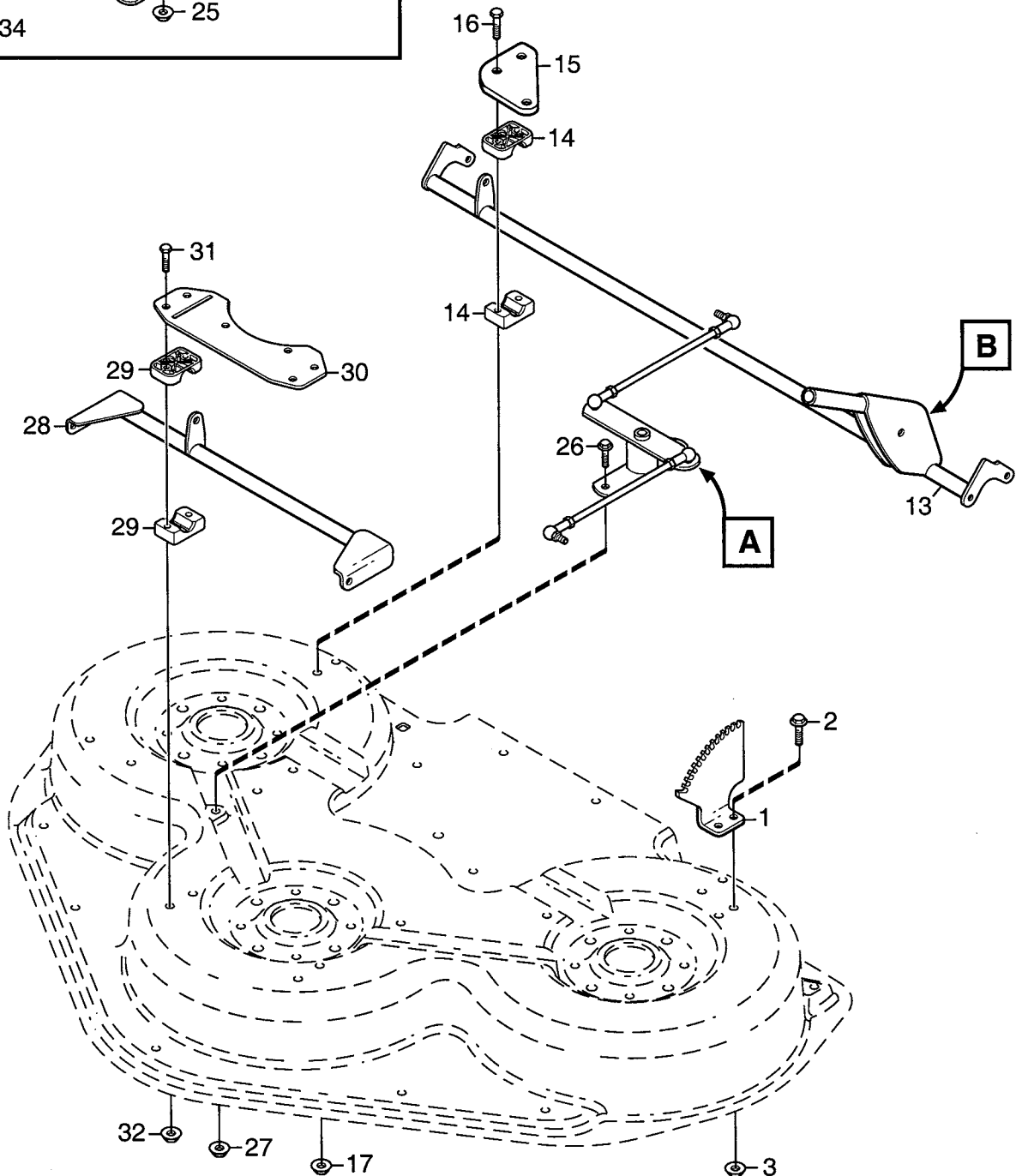
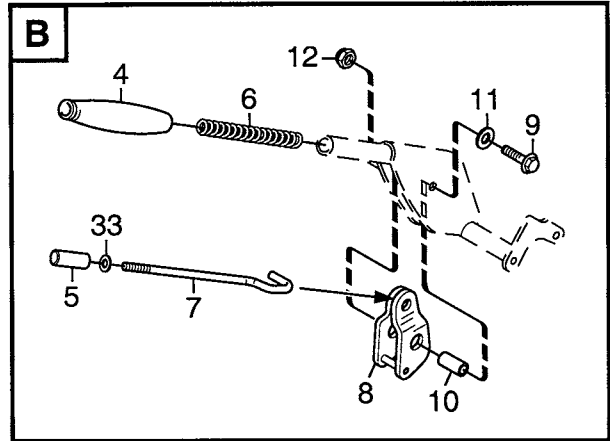
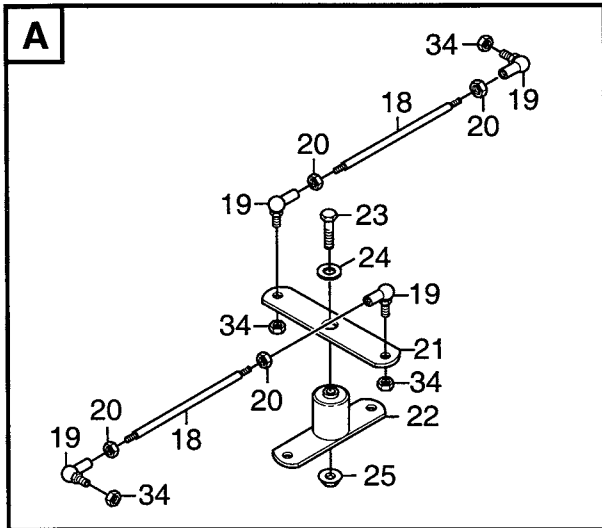
Utgåva Issue  2005- 11		Bildnr Picture No  1518		PARK KLIPPAGGREGAT 121M KNIVAR		PARK MOWER DECK 121M BLADES		Sida Page  174	
Pos. Fig.	Antal/Quantity				Art nr Part No	Benämning	Description	Sats Kit	Anmärkning Notes
	2915								
	2920								
	2921								
	2928								
1	3				1134-3841-01 Lagerbox kpl.....	Bearing box assy.....		Sats 3 st/kit of 3 2 knivar/2 blade tips 6 bultar/6 bolts+nuts	
2	1				9549-0019-00 • Kullager .....	• Ball bearing .....			
3	1				9549-0020-00 • Kullager .....	• Ball bearing .....			
4	1				1134-0051-05 • Distans .....	• Spacer .....			
5	12				9945-0825-16 Skruv .....	Screw .....			
6	3				1134-3725-01 Distans .....	Spacer .....			
7	3				1134-5130-01 Skyddsbricka .....	Bearing cover .....			
8	2				1134-4600-01 Knivaxel .....	Blade shaft .....			
9	1				1134-4600-02 Knivaxel .....	Blade shaft .....			
10	1				1134-9081-01 Knivbalk kpl .....	Blade bar assy .....			
11	3				1134-9082-01 • Knivsats kpl .....	• Blade kit .....			
12	1				1134-9054-01 •• Brytbultsats .....	•• Shear bolt kit .....			
13	2				9997-0816-16 •• Skruv .....	•• Screw .....			
14	2				9712-0831-02 •• Låsmutter .....	•• Lock nut .....			
15	6				9997-0820-16 Skruv .....	Screw .....			
16	6				9747-0831-02 Mutter.....	Lock nut.....			



Utgåva Issue  2005- 11		Bildnr Picture No  1678A		PARK KLIPPAGGREGAT 125 COMBI PRO RAM		PARK MOWER DECK 125 COMBI PRO FRAME		Sida Page  176
Pos. Fig.	Antal/Quantity			Art nr Part No	Benämning	Description	Sats Kit	Anmärkning Notes
	2936 -28 2937 -28							
1	2			1134-5199-01	Hjulbygel .....	Wheel holder .....		Sats 4 st/kit of 4
2	1			1134-9026-01	Lagerbussning .....	Bearing bush kit .....		
3	2			1134-5677-01	Distans .....	Spacer .....		
4	2			9501-0500-00	Smörjnippel .....	Grease joint .....		
5	2			9997-1090-12	Skruv .....	Screw .....		
6	2			9403-0113-02	Mutterhatt .....	Nut cap .....		
7	4			9699-0030-02	Planbricka .....	Flat washer .....		
8	2			9747-1031-02	Låsmutter .....	Lock nut .....		
9	2			1134-4284-01	Hjul .....	Wheel .....		
10	4			1134-4319-01	Lager .....	Bearing .....		
11	2			1134-5209-01	Hjulaxel .....	Wheel axle .....		
12	2			9959-0820-16	Skruv .....	Screw .....		
13	2			9650-0012-04	Seegersäkring .....	Circlip .....		
14	2			9501-0500-00	Smörjnippel .....	Grease joint .....		
15	1			1134-5483-01	Aggregatsarm- vä .....	Mower deck arm- LH .....		
16	1			1134-5483-02	Aggregatsarm- hö .....	Mower deck arm- RH .....		
17	2			1134-1565-08	Distans .....	Spacer .....		
18	2			9997-0865-12	Skruv .....	Screw .....		
19	2			9747-0831-02	Mutter .....	Lock nut .....		
20	2			9699-0056-02	Planbricka .....	Flat washer .....		
21	2			1134-5488-01	Distans .....	Spacer .....		
22	4			9403-0113-00	Mutterhatt .....	Nut cap .....		
23	2			1134-3710-01	Redskapsfäste .....	Tool attachment .....		
24	2			9898-1035-16	Skruv .....	Screw .....		
25	2			9739-1031-22	Mutter .....	Nut .....		
26	2			9598-2001-02	Låsnål .....	Spring pin .....		
27	1			1134-5476-01	Ram- vä .....	Frame- LH .....		
28	1			1134-5476-02	Ram- hö .....	Frame- RH .....		
29	2			1134-0240-00	Ansattsskruv .....	Shoulder screw .....		
30	4			9747-0831-02	Mutter .....	Lock nut .....		
31	1			1134-5499-01	Lyftbygel .....	Lift bracket .....		
32	1			1134-5217-01	Överfall .....	Tube connection .....		
33	4			9897-0850-12	Skruv .....	Screw .....		
34	4			9748-0831-02	Låsmutter .....	Lock nut .....		
35	1			1134-5562-01	Lyftfjäder .....	Lift spring .....		
36	1			1134-5489-01	Kedja .....	Chain .....		
37	2			1134-5528-01	Karbinhake .....	Snap hook .....		
38	1			1134-2629-01	Lyftlänk .....	Lift link .....		
39	1			1134-5588-01	Kedja .....	Chain .....		
40	2			9997-0825-16	Skruv .....	Screw .....		
41	2			1134-5626-01	Distans .....	Spacer .....		
42	2			9699-0104-02	Bricka .....	Washer .....		

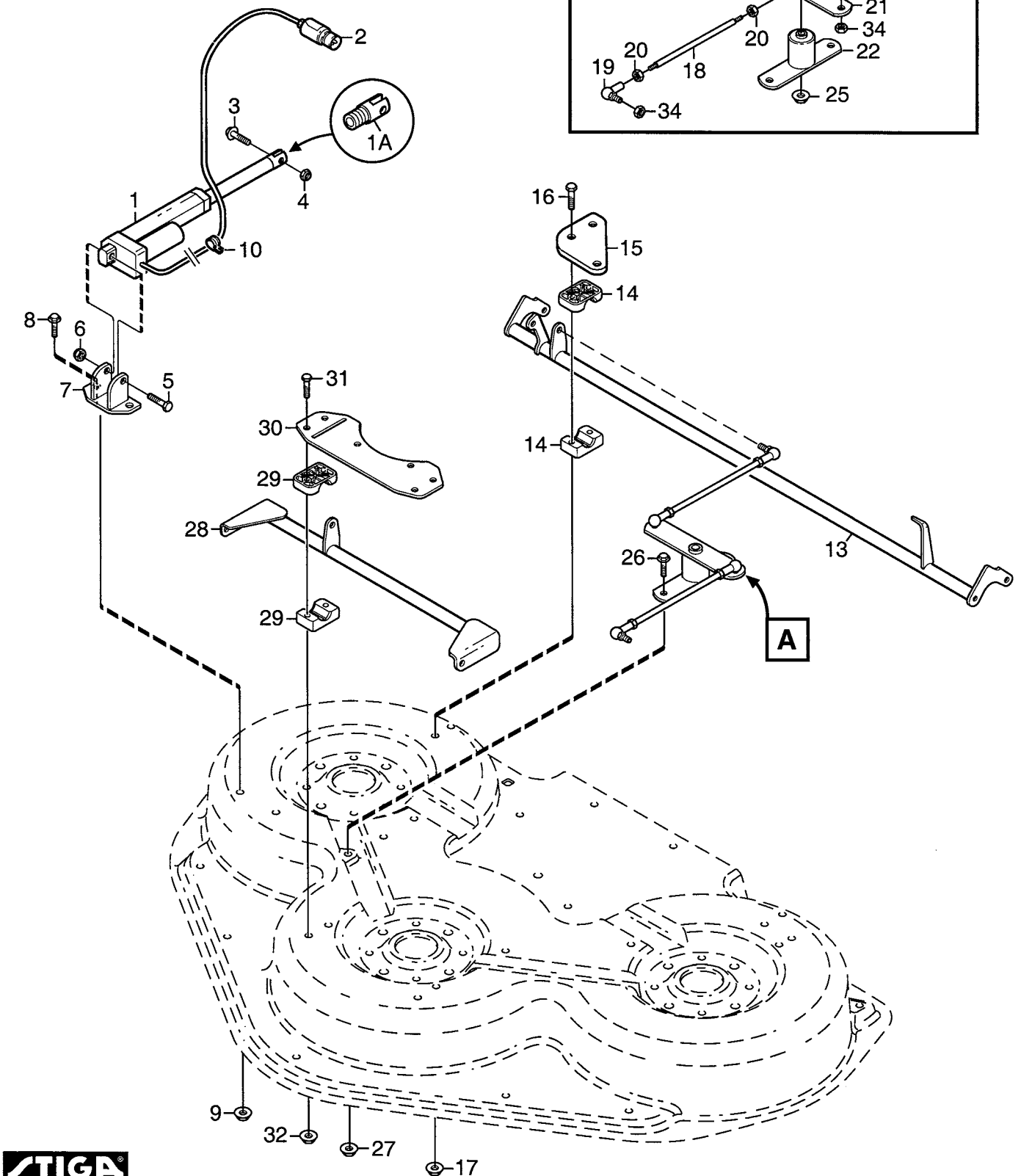


Utgåva Issue 2005- 11		Bildnr Picture No 1677		PARK KLIPPAGGREGAT 125 COMBI PRO KÅPA		PARK MOWER DECK 125 COMBI PRO CASING		Sida Page 178	
Pos. Fig.	Antal/Quantity				Art nr Part No	Benämning	Description	Sats Kit	Anmärkning Notes
	2936 -28 2937 -28								
1	1				1134-5332-01 Kåpa .....	Casing .....			
2	1				1134-5419-01 Sidoskydd- vä .....	Side guard- LH .....			
3	1				1134-5419-02 Sidoskydd- hö .....	Side guard- RH .....			
4	2				1134-3434-01 Rulle .....	Roller .....			
5	2				1134-0041-04 Hylsa .....	Bushing .....			
6	2				9997-1060-12 Skruv .....	Screw .....			
7	2				9739-1031-22 Mutter .....	Nut .....			
8	1				1134-5515-01 Slitskydd- vä .....	Wear protection- LH .....			
9	1				1134-5515-02 Slitskydd- hö .....	Wear protection- RH .....			
10	1				1134-5425-01 Frontskydd .....	Front protection .....			
11	7				9959-0816-16 Skruv .....	Screw .....			
12	3				9739-0831-22 Mutter .....	Nut .....			
20	1				1134-5409-02 Mulcherplugg (svart) .....	Mulch plug (black) .....			
21	1				1117-3194-01 Låsratt .....	Locking knob .....			
22	1				1134-5559-01 Skruv .....	Screw .....			
23	1				9652-0006-04 Spärryttare .....	Circlip .....			
24	1				1134-5595-01 Nitmutter .....	Riveting nut .....			
25	1				1134-5553-02 Ledskena- rak (svart) .....	Guide plate- straight .....			
26	1				1134-5554-02 Ledskena- böjd (svart) .....	Guide plate- curved .....			
27	4				9959-0816-16 Skruv .....	Screw .....			
28	4				9739-0831-22 Mutter .....	Nut .....			
99	1				1134-5594-01 Dekalsats .....	Label kit .....			

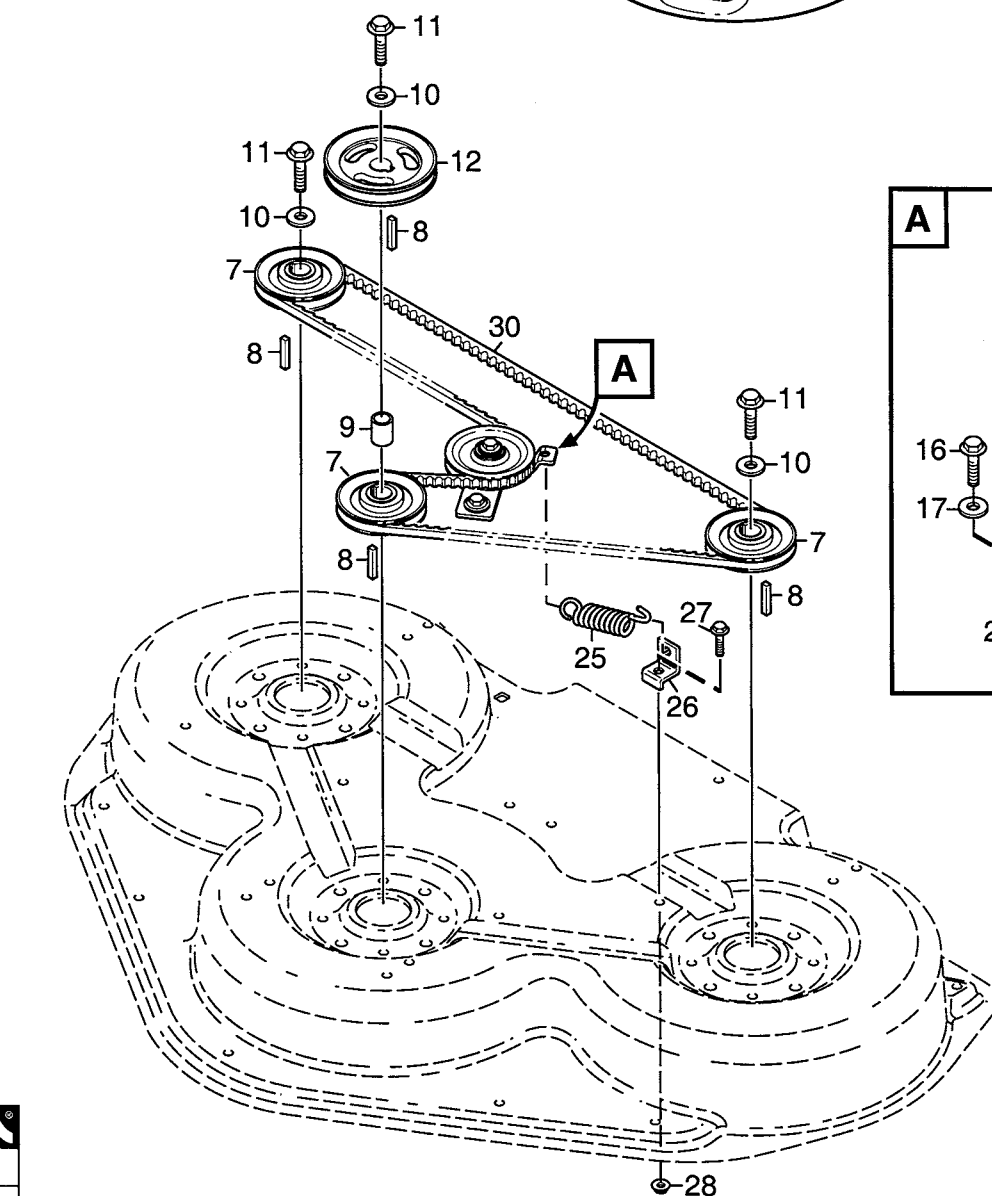




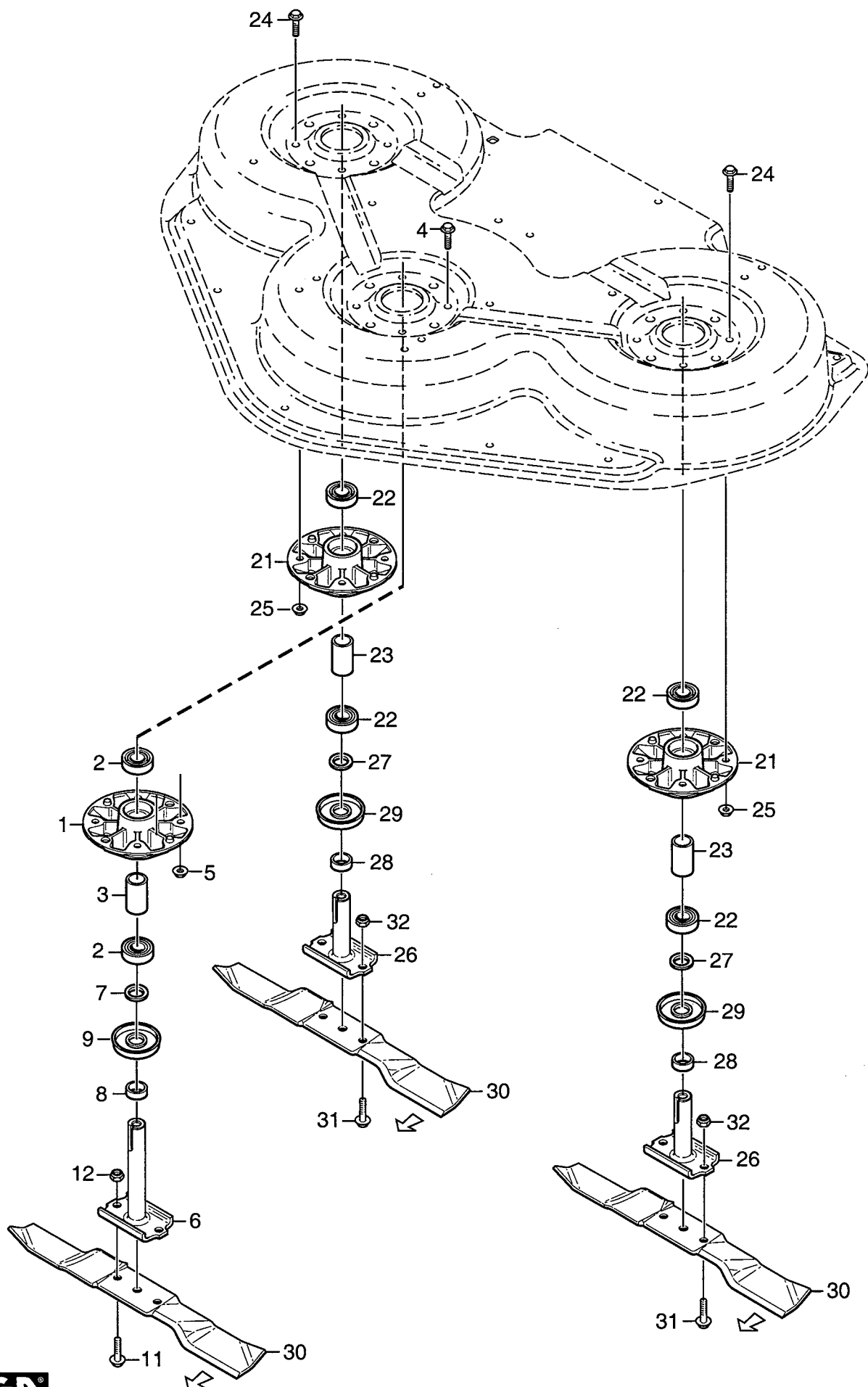
Utgåva Issue  2005- 11		Bildnr Picture No  1675A		PARK KLIPPAGGREGAT 125 COMBI PRO REGLAGE		PARK MOWER DECK 125 COMBI PRO CONTROLS		Sida Page  180	
Pos. Fig.	Antal/Quantity				Art nr Part No	Benämning	Description	Sats Kit	Anmärkning Notes
	2936 -28								
1	1				1134-5447-01	Höjdinst.segment .....	Height adj. quadrant.....		
2	2				9959-0816-16	Skruv .....	Screw .....		
3	2				9739-0831-22	Mutter.....	Nut .....		
4	1				1134-5503-01	Handtag .....	Handle.....		
5	1				1134-5443-01	Tryckknapp .....	Push button .....		
6	1				1134-5445-01	Fjäder.....	Spring .....		
7	1				1134-5444-01	Tryckstång .....	Push rod .....		
8	1				1134-5440-01	Spärr .....	Catch .....		
9	1				9959-0840-16	Skruv .....	Screw .....		
10	1				1134-1565-13	Distans .....	Spacer.....		
11	1				9699-0028-02	Planbricka.....	Flat washer.....		
12	1				9747-0831-02	Mutter.....	Lock nut.....		
13	1				1134-5431-01	Bakaxel .....	Rear axle .....		
14	4				1134-5469-01	Lagerhalva .....	Bearing half.....		
15	2				1134-5471-01	Överfall- bakre .....	Bearing plate- rear .....		
16	4				9997-0845-12	Skruv .....	Screw .....		
17	4				9739-0831-22	Mutter.....	Nut .....		
18	2				1134-5473-01	Tryckstång .....	Push rod .....		
19	4				9570-0002-00	Vinkellänk .....	Elbow link .....		
20	4				9739-0831-22	Mutter.....	Nut .....		
21	1				1134-5474-01	Länkarm .....	Pivot arm .....		
22	1				1134-5552-01	Pivottäste.....	Pivot shaft.....		
23	1				9997-0880-16	Skruv .....	Screw .....		
24	1				1134-5127-01	Bricka .....	Washer.....		
25	1				9739-0831-22	Mutter.....	Nut .....		
26	2				9959-0816-16	Skruv .....	Screw .....		
27	2				9739-0831-22	Mutter.....	Nut .....		
28	1				1134-5427-01	Framaxel .....	Front axle .....		
29	4				1134-5469-01	Lagerhalva .....	Bearing half.....		
30	1				1134-5470-01	Överfall- främre.....	Bearing plate- front .....		
31	4				9997-0845-12	Skruv .....	Screw .....		
32	4				9739-0831-22	Mutter.....	Nut .....		
33	1				9699-0087-02	Planbricka.....	Flat washer.....		
34	4				9747-0831-02	Mutter.....	Lock nut.....		



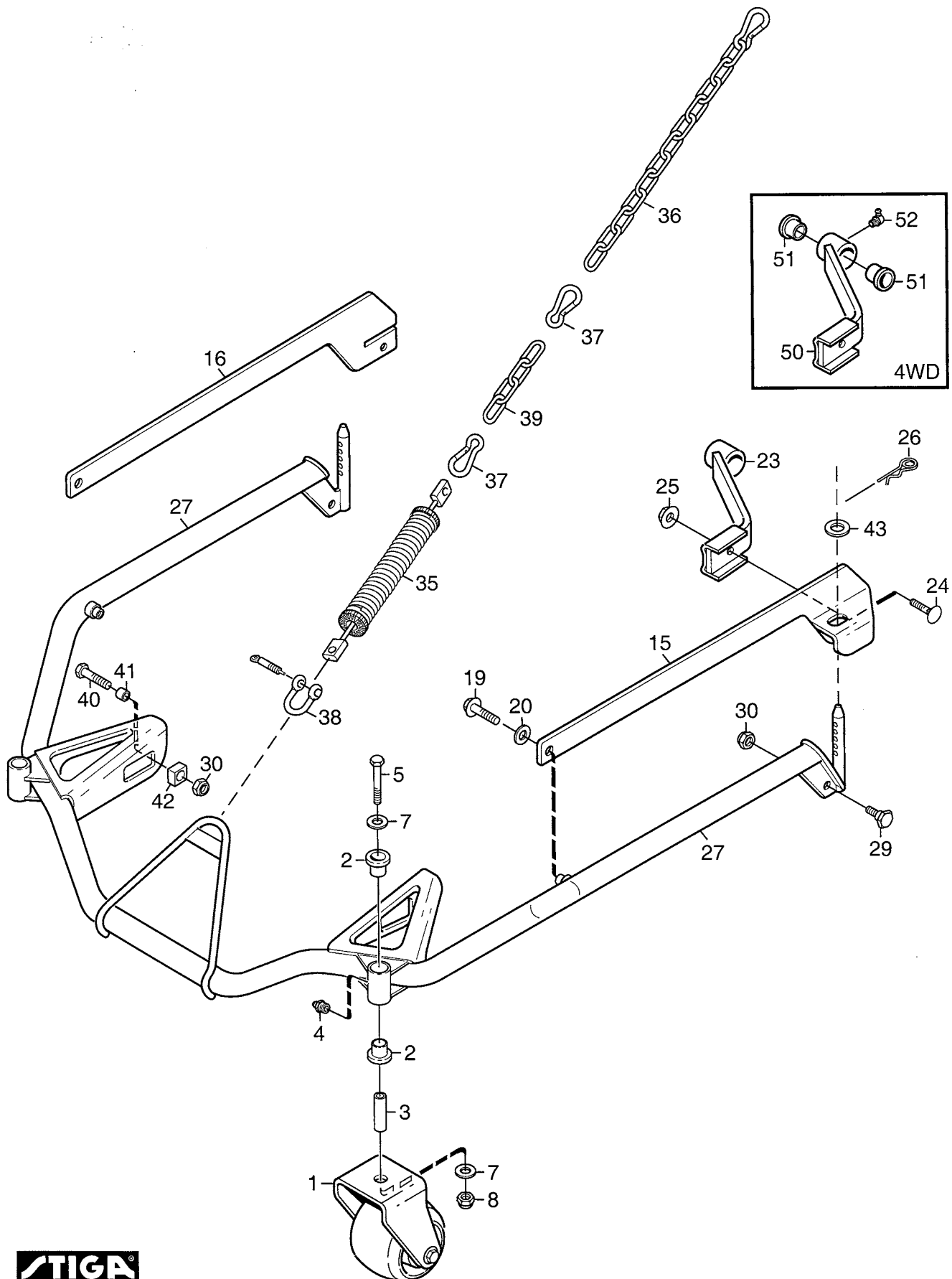
Utgåva Issue 2005- 11		Bildnr Picture No 1676A		PARK KLIPPAGGREGAT 125 COMBI PRO EL. REGLAGE		PARK MOWER DECK 125 COMBI PRO EL. CONTROL		Sida Page 182	
Pos. Fig.	Antal/Quantity				Art nr Part No	Benämning	Description	Sats Kit	Anmärkning Notes
	2937 -28								
1	1				1134-5449-01	Ställdon .....	Electric lifter .....		
1 A	1				1139-0005-01	• Kolvstångsända .....	• Rod end .....		
2	1				1134-4057-01	• Hankontakt .....	• Male terminal .....		
3	1				9959-0830-16	Skruv .....	Screw .....		
4	1				9747-0831-02	Mutter .....	Lock nut .....		
5	1				9997-0845-12	Skruv .....	Screw .....		
6	1				9747-0831-02	Mutter .....	Lock nut .....		
7	1				1134-5450-01	Fäste .....	Bracket .....		
8	2				9959-0816-16	Skruv .....	Screw .....		
9	2				9739-0831-22	Mutter .....	Nut .....		
10	1				9400-0315-01	Kabelhållare .....	Cable holder .....		
13	1				1134-5556-01	Bakaxel .....	Rear axle .....		
14	4				1134-5469-01	Lagerhalva .....	Bearing half .....		
15	2				1134-5471-01	Överfall- bakre .....	Bearing plate- rear .....		
16	4				9997-0845-12	Skruv .....	Screw .....		
17	4				9739-0831-22	Mutter .....	Nut .....		
18	2				1134-5473-01	Tryckstång .....	Push rod .....		
19	4				9570-0002-00	Vinkelänk .....	Elbow link .....		
20	4				9739-0831-22	Mutter .....	Nut .....		
21	1				1134-5474-01	Länkarm .....	Pivot arm .....		
22	1				1134-5552-01	Pivotfäste .....	Pivot shaft .....		
23	1				9997-0880-16	Skruv .....	Screw .....		
24	1				1134-5127-01	Bricka .....	Washer .....		
25	1				9739-0831-22	Mutter .....	Nut .....		
26	2				9959-0816-16	Skruv .....	Screw .....		
27	2				9739-0831-22	Mutter .....	Nut .....		
28	1				1134-5427-01	Framaxel .....	Front axle .....		
29	4				1134-5469-01	Lagerhalva .....	Bearing half .....		
30	1				1134-5470-01	Överfall- främre .....	Bearing plate- front .....		
31	4				9997-0845-12	Skruv .....	Screw .....		
32	4				9739-0831-22	Mutter .....	Nut .....		
34	4				9747-0831-02	Mutter .....	Lock nut .....		



Utgåva Issue		Bildnr Picture No		PARK KLIPPAGGREGAT 125 COMBI PRO TRANSMISSION		PARK MOWER DECK 125 COMBI PRO TRANSMISSION		Sida Page	
2005- 11		1674						184	
Pos. Fig.	Antal/Quantity				Art nr Part No	Benämning	Description	Sats Kit	Anmärkning Notes
	2936 - 28	2937 - 28							
1	1				1134-5396-01	Transmissionskåpa .....	Transmission cover .....		6 x 6 x 25 mm L = 20 mm   

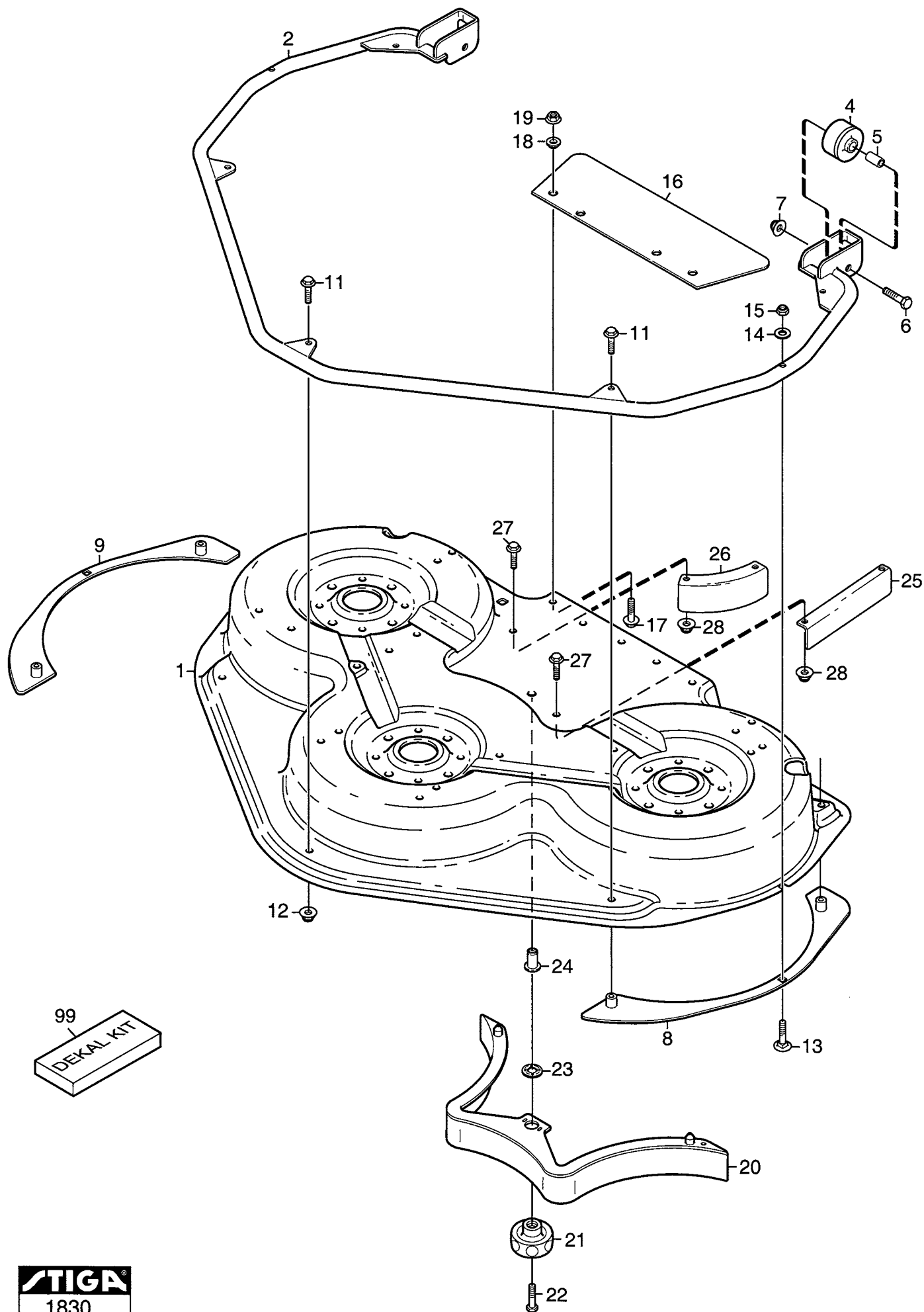


Utgåva Issue  2005- 11		Bildnr Picture No  1673A		PARK KLIPPAGGREGAT 125 COMBI PRO KNIVAR		PARK MOWER DECK 125 COMBI PRO BLADES		Sida Page  186
Pos. Fig.	Antal/Quantity			Art nr Part No	Benämning	Description	Sats Kit	Anmärkning Notes
	2936 -28 2937 -28							
1	1			1134-5398-01	Lagerbox kpl.....	Bearing box assy.....		L = 40 mm
2	2			9549-0057-01	• Kullager .....	• Ball bearing .....		
3	1			1134-5400-01	• Distans .....	• Spacer .....		
4	4			9959-0816-16	Skruv .....	Screw .....		
5	4			9739-0831-22	Mutter.....	Nut .....		Shims L = 10 mm
6	1			1134-5401-02	Knivaxel .....	Blade shaft .....		
7	1			9695-0016-00	Bricka .....	Washer.....		
8	1			1134-5400-02	Distans .....	Spacer.....		
9	1			1134-5403-01	Täckbricka .....	Bearing cover .....		L = 40 mm
11	2			9997-0820-16	Skruv .....	Screw .....		
12	2			9747-0831-02	Mutter.....	Lock nut.....		
21	2			1134-5398-01	Lagerbox kpl.....	Bearing box assy.....		
22	2			9549-0057-01	• Kullager .....	• Ball bearing .....		L = 40 mm
23	1			1134-5400-01	• Distans .....	• Spacer .....		
24	8			9959-0816-16	Skruv .....	Screw .....		
25	8			9739-0831-22	Mutter.....	Nut .....		
26	2			1134-5401-01	Knivaxel .....	Blade shaft .....		Shims L = 10 mm
27	2			9695-0016-00	Bricka .....	Washer.....		
28	2			1134-5400-02	Distans .....	Spacer.....		
29	2			1134-5403-01	Täckbricka .....	Bearing cover .....		
30	1			1134-9086-01	Knivsats.....	Blade kit .....		Sats 3 st/kit of 3
31	4			9997-0820-16	Skruv .....	Screw .....		
32	4			9747-0831-02	Mutter.....	Lock nut.....		

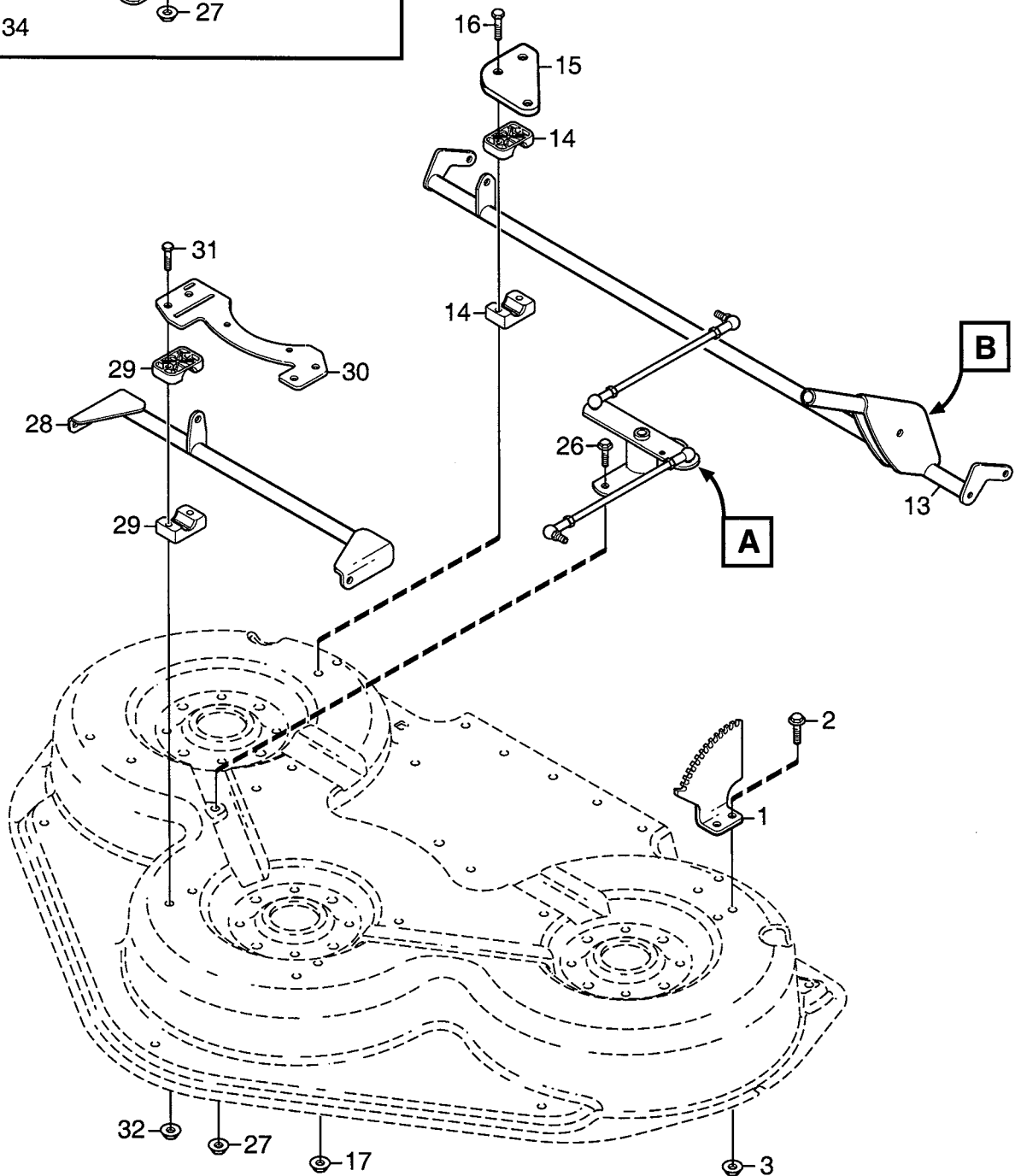
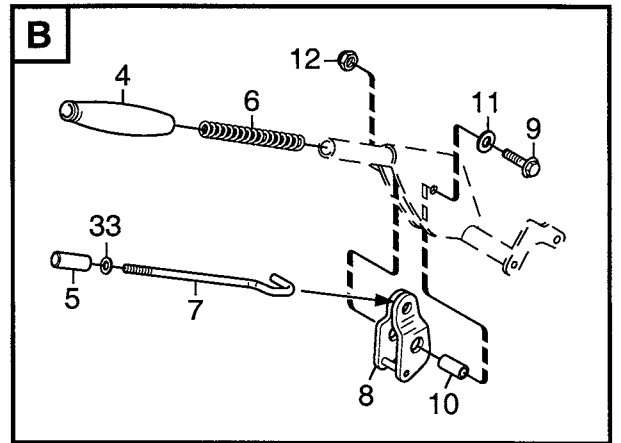
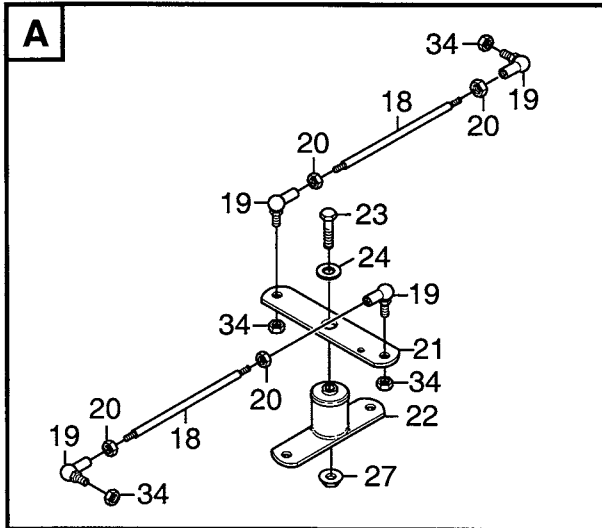




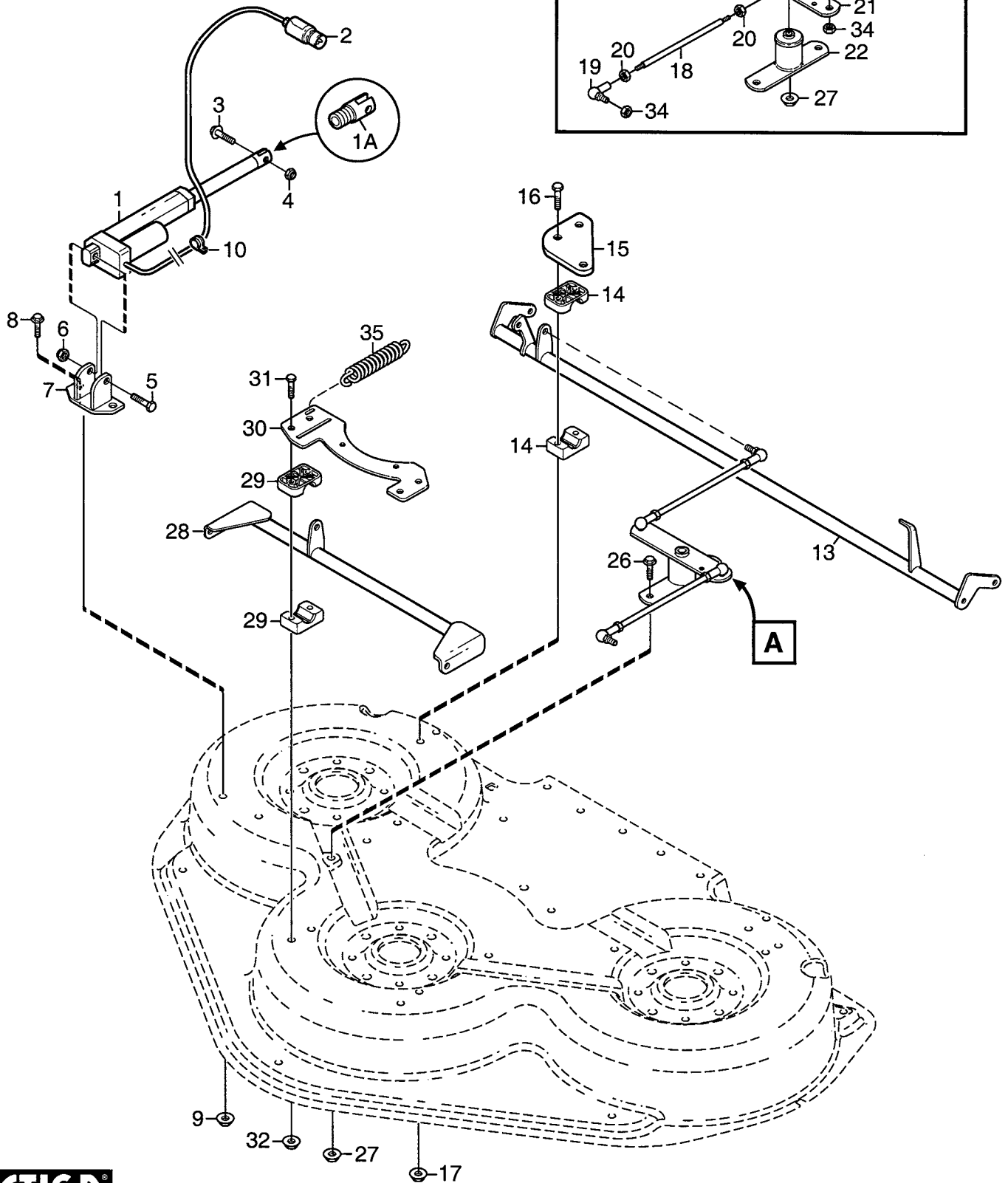
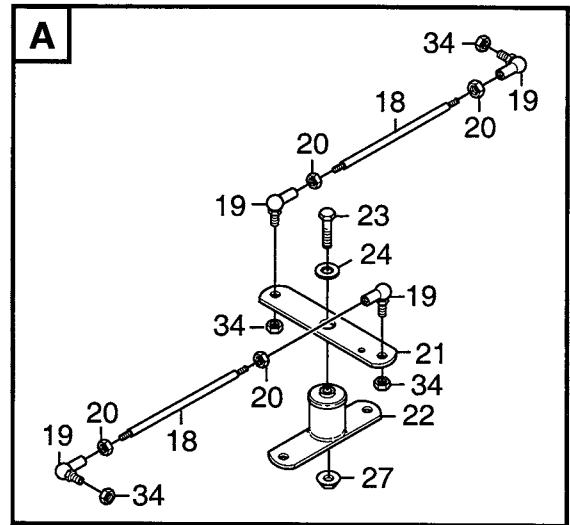
Utgåva Issue		Bildnr Picture No		PARK KLIPPAGGREGAT 125 COMBI PRO RAM		PARK MOWER DECK 125 COMBI PRO FRAME		Sida Page
2005- 11		1829						188
Pos. Fig.	Antal/Quantity			Art nr Part No	Benämning	Description	Sats Kit	Anmärkning Notes
	2936 - 18 2937 - 18	2938 - 38 2941 - 38						
1	2	2		1134-5884-01	Pivothjul .....	Pivot wheel .....		Sats 4 st/kit of 4
2	1	1		1134-9026-01	Lagerbussning.....	Bearing bush kit .....		
3	2	2		1134-5677-01	Distans .....	Spacer.....		
4	2	2		9501-0500-00	Smörjnippel .....	Grease joint.....		
5	2	2		9997-1090-12	Skruv .....	Screw .....		
7	4	4		9699-0030-02	Planbricka.....	Flat washer.....		
8	2	2		9747-1031-02	Låsmutter .....	Lock nut .....		
15	1	1		1134-5845-01	Aggregatsarm- vä .....	Mower deck arm- LH.....		
16	1	1		1134-5845-02	Aggregatsarm- hö.....	Mower deck arm- RH .....		
19	2	2		9959-0816-16	Skruv .....	Screw .....		
20	2	2		9699-0056-02	Planbricka.....	Flat washer.....		
23	2			1134-3710-01	Redskapsfäste .....	Tool attachment .....		
24	2	2		9898-1035-16	Skruv .....	Screw .....		
25	2	2		9739-1031-22	Mutter.....	Nut .....		
26	2	2		9598-2001-02	Låsnål.....	Spring pin .....		
27	1	1		1134-5843-01	Ram.....	Frame.....		
29	2	2		1134-0240-00	Ansattsskruv.....	Shoulder screw .....		
30	4	4		9747-0831-02	Mutter.....	Lock nut .....		
35	1	1		1134-5562-01	Lyftfjäder .....	Lift spring .....		
36	1	1		1134-5489-01	Kedja .....	Chain .....		
37	2	2		1134-5528-01	Karbinhake.....	Snap hook.....		
38	1	1		1134-2629-01	Lyftlänk.....	Lift link .....		
39	1	1		1134-5588-01	Kedja .....	Chain.....		
40	2	2		9997-0825-16	Skruv .....	Screw .....		
41	2	2		1134-5626-01	Distans .....	Spacer.....		Inkl. pos 51 - 52
42	2	2		1134-5863-01	Distans .....	Spacer.....		
43	2	2		9699-0104-02	Bricka .....	Washer.....		
50		2		1134-5886-01	Redskapsfäste kpl.....	Tool attachment assy .....		
51		2		1134-5686-01	• Lagerbussning.....	• Bearing bush.....		
52		1		9501-0502-00	• Smörjnippel .....	• Grease joint.....		



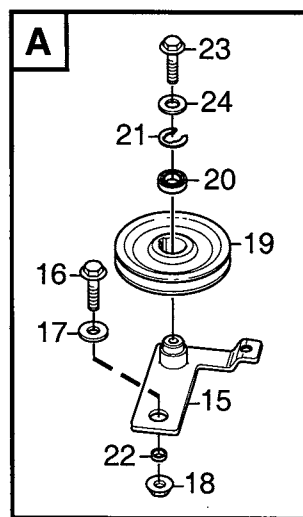
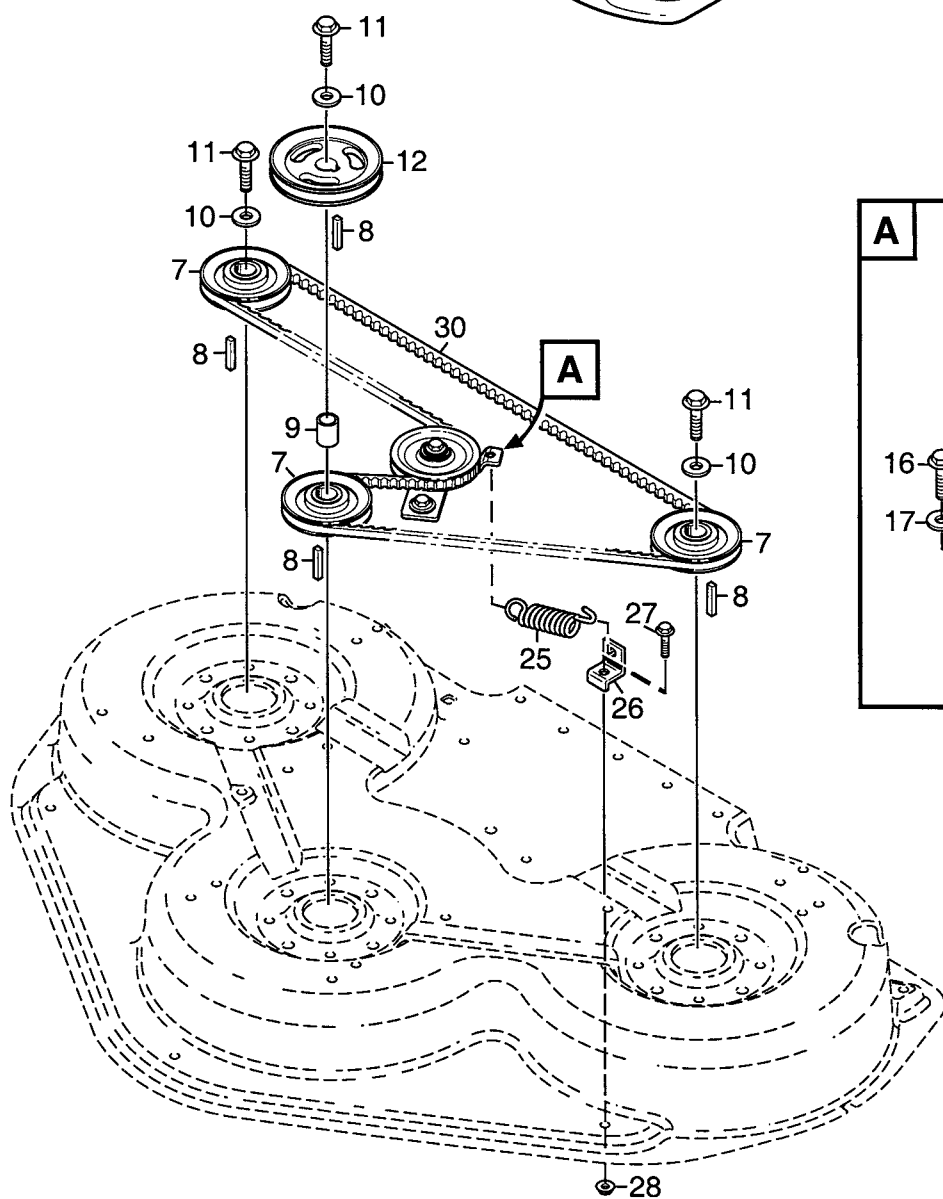
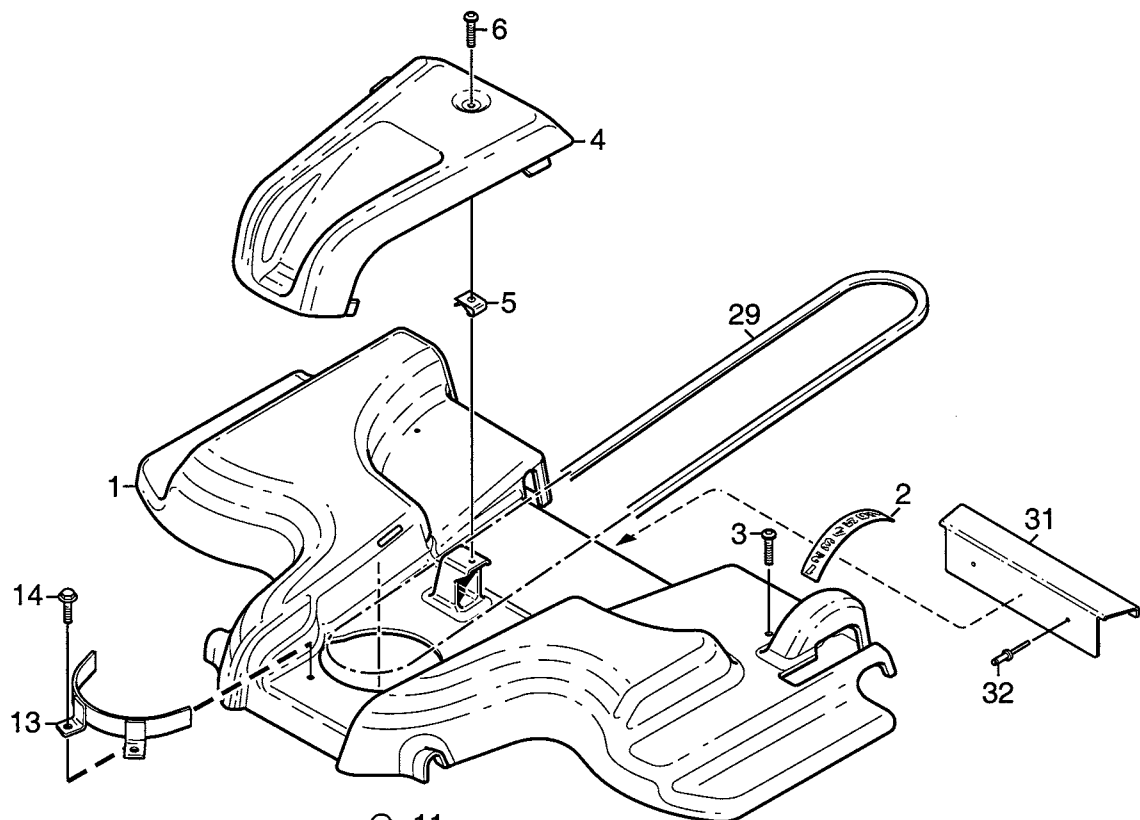
Utgåva Issue 2005- 11		Bildnr Picture No 1830		PARK KLIPPAGGREGAT 125 COMBI PRO KÅPA		PARK MOWER DECK 125 COMBI PRO CASING		Sida Page 190	
Pos. Fig.	Antal/Quantity				Art nr Part No	Benämning	Description	Sats Kit	Anmärkning Notes
	2936 -18 2937 -18	2938 -38 2941 -38							
1	1	1			1134-5848-01	Kåpa .....	Casing .....		
2	1	1			1134-5844-01	Ram .....	Frame .....		
4	2	2			1134-3434-01	Rulle .....	Roller .....		
5	2	2			1134-0041-04	Hylsa .....	Bushing .....		
6	2	2			9997-1060-12	Skruv .....	Screw .....		
7	2	2			9739-1031-22	Mutter .....	Nut .....		
8	1	1			1134-5853-03	Slitskydd- vä .....	Wear protection- LH .....		
9	1	1			1134-5853-04	Slitskydd- hö .....	Wear protection- RH .....		
11	5	5			9959-0816-16	Skruv .....	Screw .....		
12	1	1			9739-0831-22	Mutter .....	Nut .....		
13	2	2			9897-0640-12	Skruv .....	Screw .....		
14	2	2			9699-0060-02	Planbricka .....	Flat washer .....		
15	2	2			9747-0631-02	Låsmutter .....	Lock nut .....		
16	1	1			1134-5885-01	Gummiskydd .....	Rubber flap .....		
17	2	2			9959-0816-16	Skruv .....	Screw .....		
18	4	4			1134-4185-01	Ansatsbricka .....	Flange washer .....		
19	2	2			9739-0831-22	Mutter .....	Nut .....		
20	1	1			1134-5409-02	Mulcherplugg (svart) .....	Mulch plug (black) .....		
21	1	1			1117-3194-01	Låsratt .....	Locking knob .....		
22	1	1			9997-0840-16	Skruv .....	Screw .....		
23	1	1			9675-0012-02	Starlock .....	Locking washer .....		
24	1	1			1134-5595-01	Nitmutter .....	Riveting nut .....		
25	1	1			1134-5553-02	Ledskena- rak (svart) .....	Guide plate- straight .....		
26	1	1			1134-5554-02	Ledskena- böjd (svart) .....	Guide plate- curved .....		
27	4	4			9959-0816-16	Skruv .....	Screw .....		
28	4	4			9739-0831-22	Mutter .....	Nut .....		
99	1	1			1134-5594-01	Dekalsats .....	Label kit .....		



Utgåva Issue		Bildnr Picture No		PARK KLIPPAGGREGAT 125 COMBI PRO REGLAGE		PARK MOWER DECK 125 COMBI PRO CONTROLS		Sida Page
2005- 11		1675B						192
Pos. Fig.	Antal/Quantity			Art nr Part No	Benämning	Description	Sats Kit	Anmärkning Notes
	2936 - 18 2938 - 38							
1	1			1134-5447-01	Höjdinst.segment .....	Height adj. quadrant.....		
2	2			9959-0816-16	Skruv .....	Screw .....		
3	2			9739-0831-22	Mutter.....	Nut .....		
4	1			1134-5503-01	Handtag .....	Handle .....		
5	1			1134-5443-01	Tryckknapp .....	Push button .....		
6	1			1134-5445-01	Fjäder .....	Spring .....		
7	1			1134-5444-01	Tryckstång .....	Push rod .....		
8	1			1134-5440-01	Spärr .....	Catch .....		
9	1			9959-0840-16	Skruv .....	Screw .....		
10	1			1134-1565-13	Distans .....	Spacer .....		
11	1			9699-0028-02	Planbricka.....	Flat washer .....		
12	1			9747-0831-02	Mutter.....	Lock nut .....		
13	1			1134-5860-01	Bakaxel .....	Rear axle .....		
14	4			1134-5469-01	Lagerhalva .....	Bearing half .....		
15	2			1134-5471-01	Överfall- bakre .....	Bearing plate- rear .....		
16	4			9997-0845-12	Skruv .....	Screw .....		
17	4			9739-0831-22	Mutter.....	Nut .....		
18	2			1134-5473-01	Tryckstång .....	Push rod .....		
19	4			9570-0002-00	Vinkellänk .....	Elbow link .....		
20	4			9739-0831-22	Mutter.....	Nut .....		
21	1			1134-5855-01	Länkarm .....	Pivot arm .....		
22	1			1134-5858-01	Pivotfäste.....	Pivot shaft .....		
23	1			9997-0870-16	Skruv .....	Screw .....		
24	1			1134-5127-01	Bricka .....	Washer .....		
26	2			9959-0816-16	Skruv .....	Screw .....		
27	3			9739-0831-22	Mutter.....	Nut .....		
28	1			1134-5427-01	Framaxel .....	Front axle .....		
29	4			1134-5469-01	Lagerhalva .....	Bearing half .....		
30	1			1134-5846-01	Överfall- främre.....	Bearing plate- front .....		
31	4			9997-0845-12	Skruv .....	Screw .....		
32	4			9739-0831-22	Mutter.....	Nut .....		
33	1			9699-0087-02	Planbricka.....	Flat washer .....		
34	4			9747-0831-02	Mutter.....	Lock nut .....		

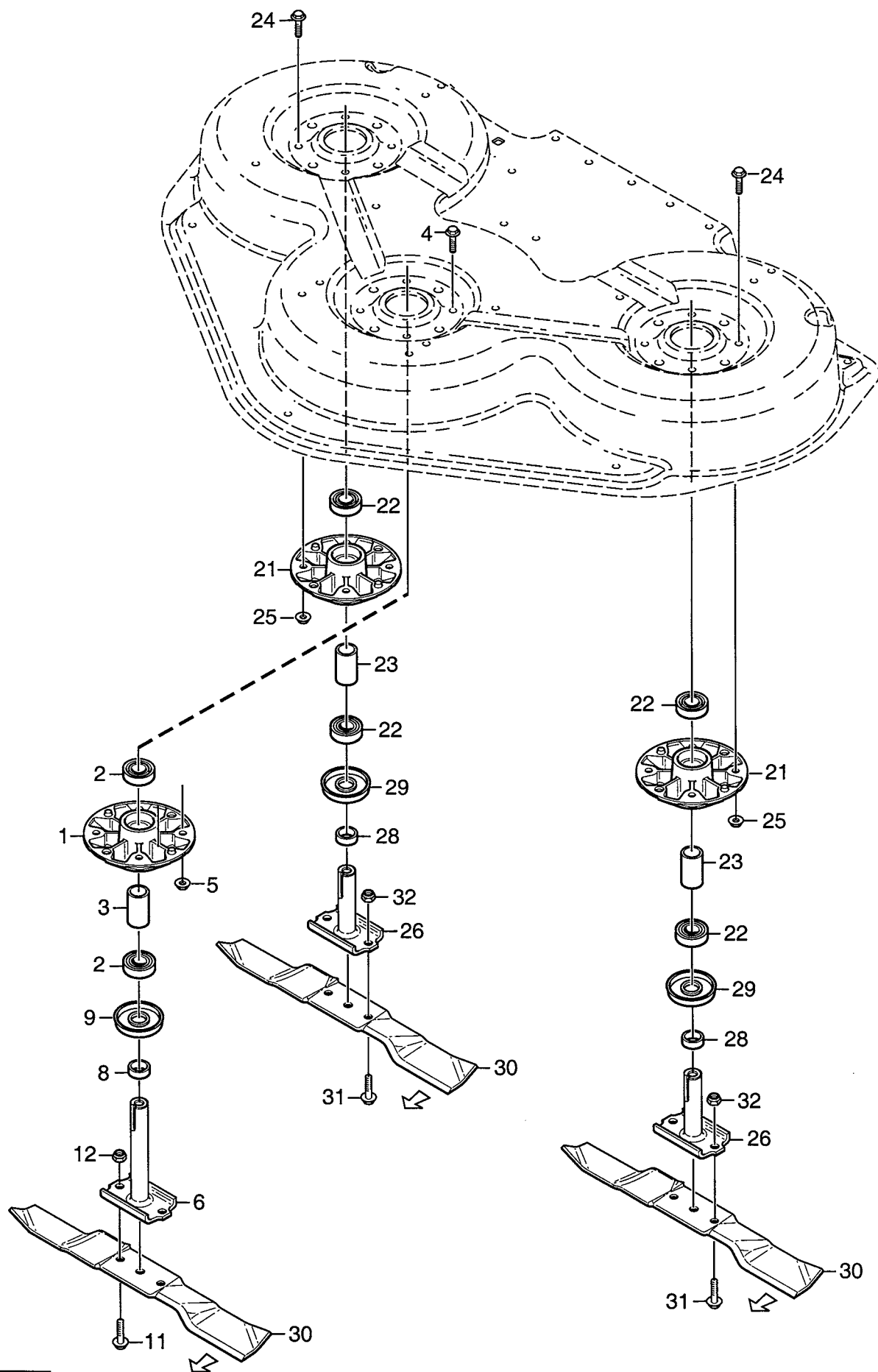


Utgåva Issue 2005- 11		Bildnr Picture No 1676B		PARK KLIPPAGGREGAT 125 COMBI PRO EL. REGLAGE		PARK MOWER DECK 125 COMBI PRO EL. CONTROL		Sida Page 194	
Pos. Fig.	Antal/Quantity				Art nr Part No	Benämning	Description	Sats Kit	Anmärkning Notes
	2937 - 18 2941 - 38								
1	1				1134-5449-01	Ställdon .....	Electric lifter .....		
1 A	1				1139-0005-01	• Kolvstångsända .....	• Rod end .....		
2	1				1134-4057-01	• Hankontakt .....	• Male terminal .....		
3	1				9959-0830-16	Skruv .....	Screw .....		
4	1				9747-0831-02	Mutter .....	Lock nut .....		
5	1				9997-0845-12	Skruv .....	Screw .....		
6	1				9747-0831-02	Mutter .....	Lock nut .....		
7	1				1134-5450-01	Fäste .....	Bracket .....		
8	2				9959-0816-16	Skruv .....	Screw .....		
9	2				9739-0831-22	Mutter .....	Nut .....		
10	1				9400-0315-01	Kabelhållare .....	Cable holder .....		
13	1				1134-5861-01	Bakaxel .....	Rear axle .....		
14	4				1134-5469-01	Lagerhalva .....	Bearing half .....		
15	2				1134-5471-01	Överfall- bakre .....	Bearing plate- rear .....		
16	4				9997-0845-12	Skruv .....	Screw .....		
17	4				9739-0831-22	Mutter .....	Nut .....		
18	2				1134-5473-01	Tryckstång .....	Push rod .....		
19	4				9570-0002-00	Vinkellänk .....	Elbow link .....		
20	4				9739-0831-22	Mutter .....	Nut .....		
21	1				1134-5855-01	Länkarm .....	Pivot arm .....		
22	1				1134-5858-01	Pivotfäste .....	Pivot shaft .....		
23	1				9997-0870-16	Skruv .....	Screw .....		
24	1				1134-5127-01	Bricka .....	Washer .....		
26	2				9959-0816-16	Skruv .....	Screw .....		
27	3				9739-0831-22	Mutter .....	Nut .....		
28	1				1134-5427-01	Framaxel .....	Front axle .....		
29	4				1134-5469-01	Lagerhalva .....	Bearing half .....		
30	1				1134-5846-01	Överfall- främre .....	Bearing plate- front .....		
31	4				9997-0845-12	Skruv .....	Screw .....		
32	4				9739-0831-22	Mutter .....	Nut .....		
34	4				9747-0831-02	Mutter .....	Lock nut .....		
35	1				1134-5847-01	Fjäder .....	Spring .....		





Utgåva Issue 2005- 11		Bildnr Picture No 1825		PARK KLIPPAGGREGAT 125 COMBI PRO TRANSMISSION		PARK MOWER DECK 125 COMBI PRO TRANSMISSION		Sida Page 196	
Pos. Fig.	Antal/Quantity				Art nr Part No	Benämning	Description	Sats Kit	Anmärkning Notes
	2936 -18	2937 -18	2938 -38	2941 -38					
1	1		1		1134-5887-01	Transmissionskåpa .....	Transmission cover .....		Inkl. pos 31 - 32 Inkl. pos 31 - 32   



Utgåva Issue 2005- 11		Bildnr Picture No 1673		PARK KLIPPAGGREGAT 125 COMBI PRO KNIVAR		PARK MOWER DECK 125 COMBI PRO BLADES		Sida Page 198	
Pos. Fig.	Antal/Quantity				Art nr Part No	Benämning	Description	Sats Kit	Anmärkning Notes
	2936 - 18 2937 - 18	2938 - 38 2941 - 38							
1	1	1			1134-5398-01	Lagerbox kpl.....	Bearing box assy.....		L = 40 mm
2	2	2			9549-0057-01	• Kullager .....	• Ball bearing .....		
3	1	1			1134-5400-01	• Distans .....	• Spacer.....		
4	4	4			9959-0816-16	Skruv .....	Screw .....		L = 10 mm
5	4	4			9739-0831-22	Mutter.....	Nut .....		
6	1	1			1134-5401-02	Knivaxel .....	Blade shaft .....		
8	1	1			1134-5925-01	Distans .....	Spacer.....		L = 40 mm
9	1	1			1134-5403-01	Täckbricka .....	Bearing cover.....		
11	2	2			9997-0820-16	Skruv .....	Screw .....		
12	2	2			9747-0831-02	Mutter.....	Lock nut.....		L = 10 mm
21	2	2			1134-5398-01	Lagerbox kpl.....	Bearing box assy.....		
22	2	2			9549-0057-01	• Kullager .....	• Ball bearing .....		
23	1	1			1134-5400-01	• Distans .....	• Spacer.....		L = 40 mm
24	8	8			9959-0816-16	Skruv .....	Screw .....		
25	8	8			9739-0831-22	Mutter.....	Nut .....		
26	2	2			1134-5401-01	Knivaxel .....	Blade shaft .....		L = 10 mm
28	2	2			1134-5925-01	Distans .....	Spacer.....		
29	2	2			1134-5403-01	Täckbricka .....	Bearing cover.....		
30	1	1			1134-9086-01	Knivsats.....	Blade kit .....		Sats 3 st/kit of 3
31	4	4			9997-0820-16	Skruv .....	Screw .....		
32	4	4			9747-0831-02	Mutter.....	Lock nut.....		