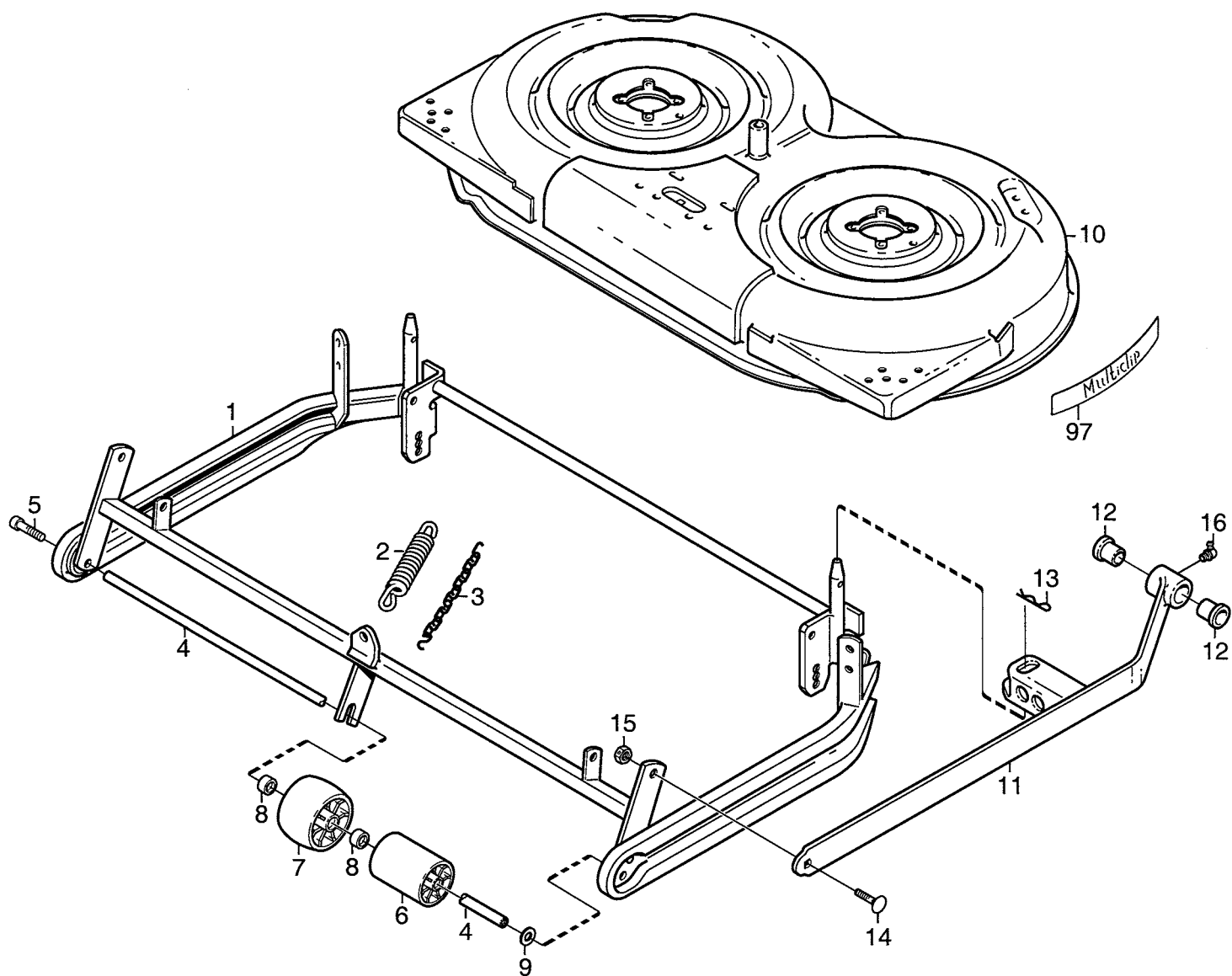


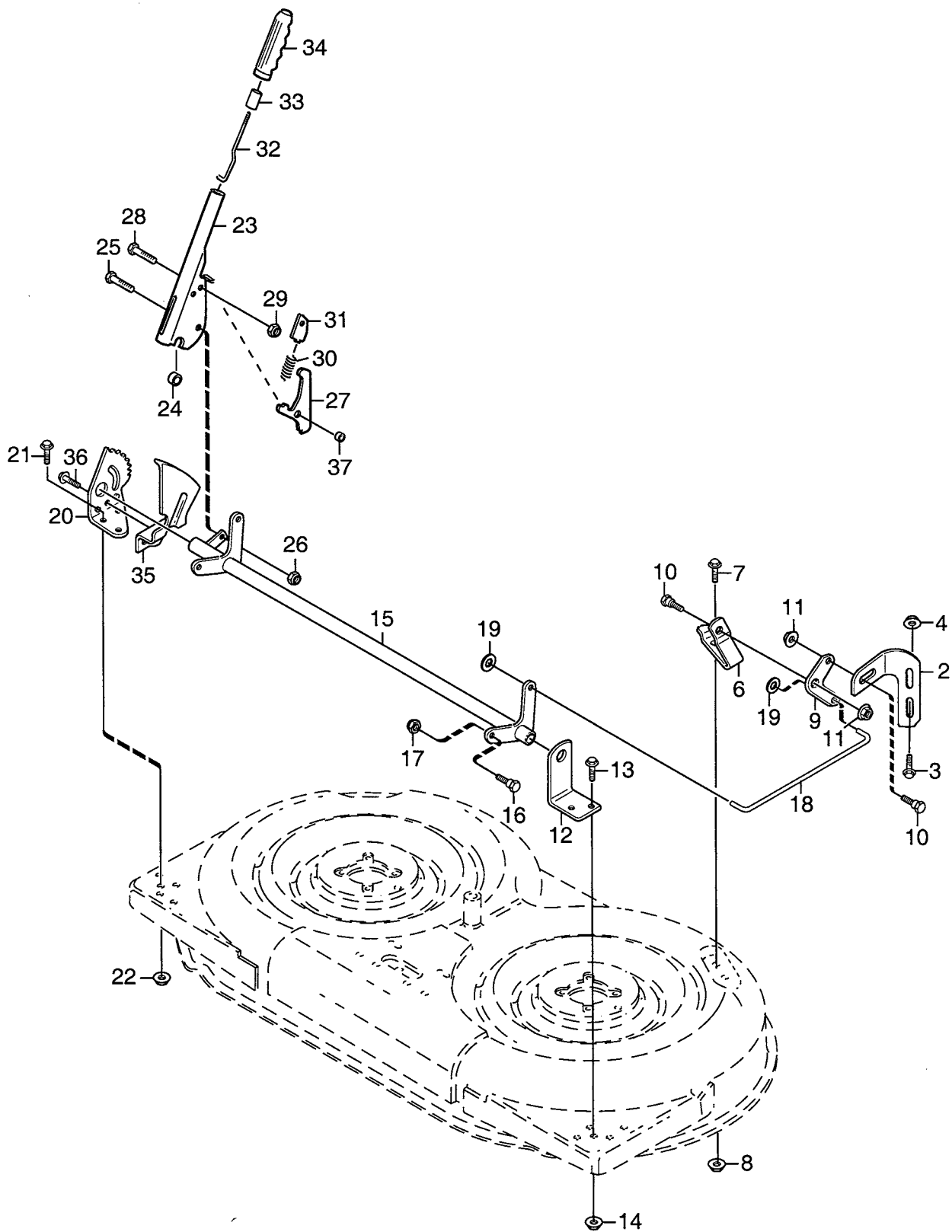
# Genuine Spare Parts

---

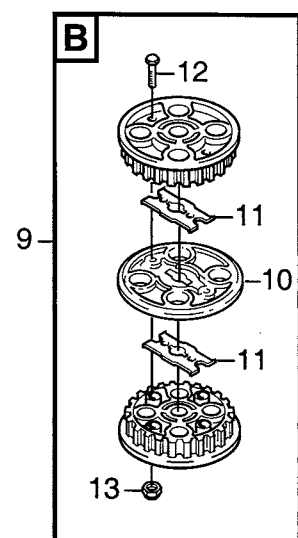
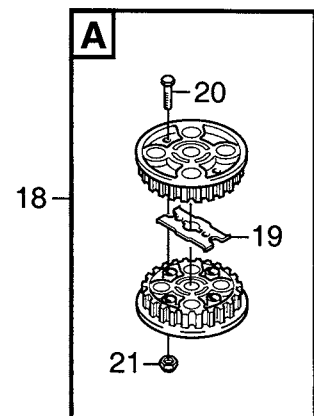
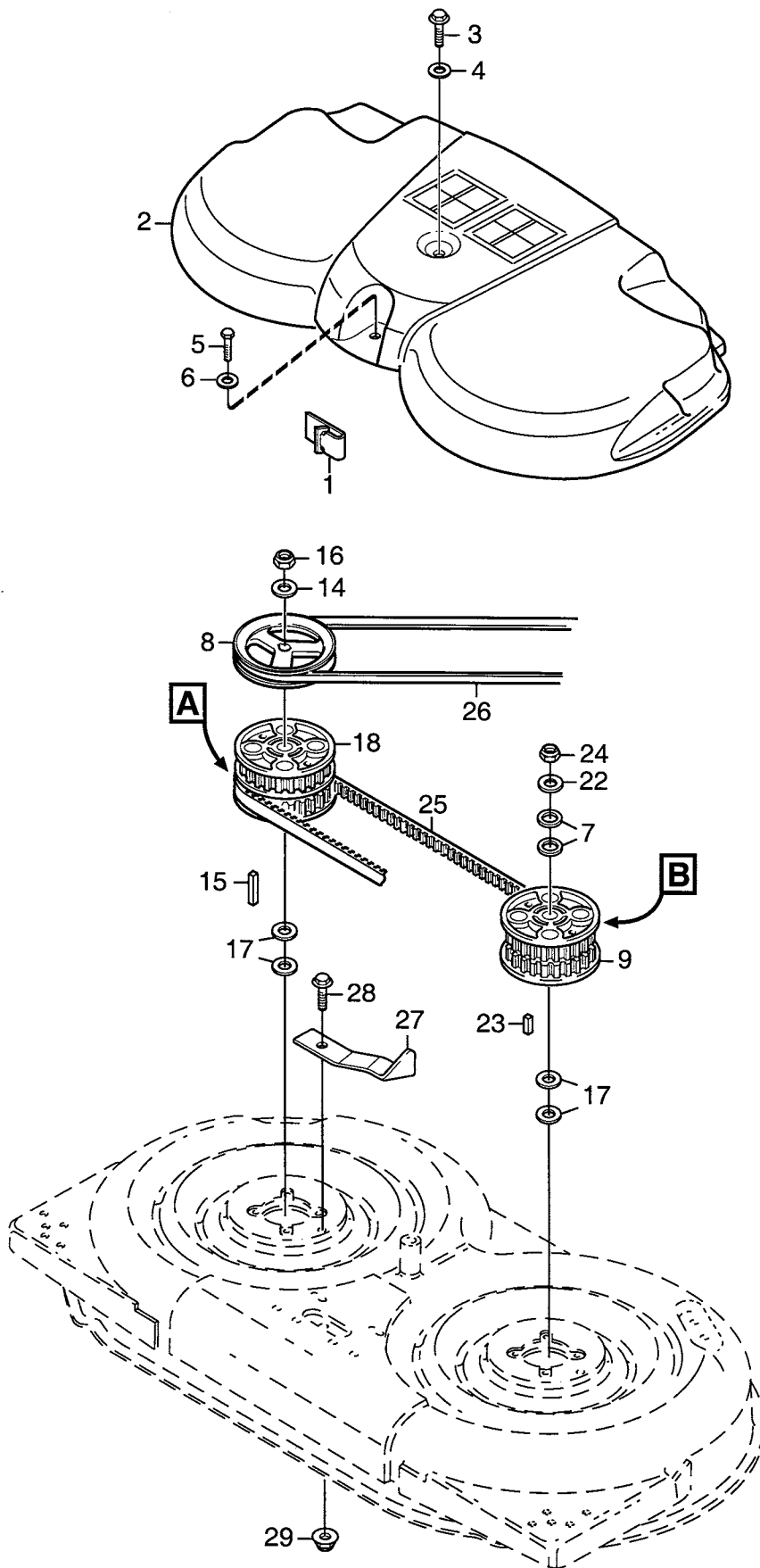




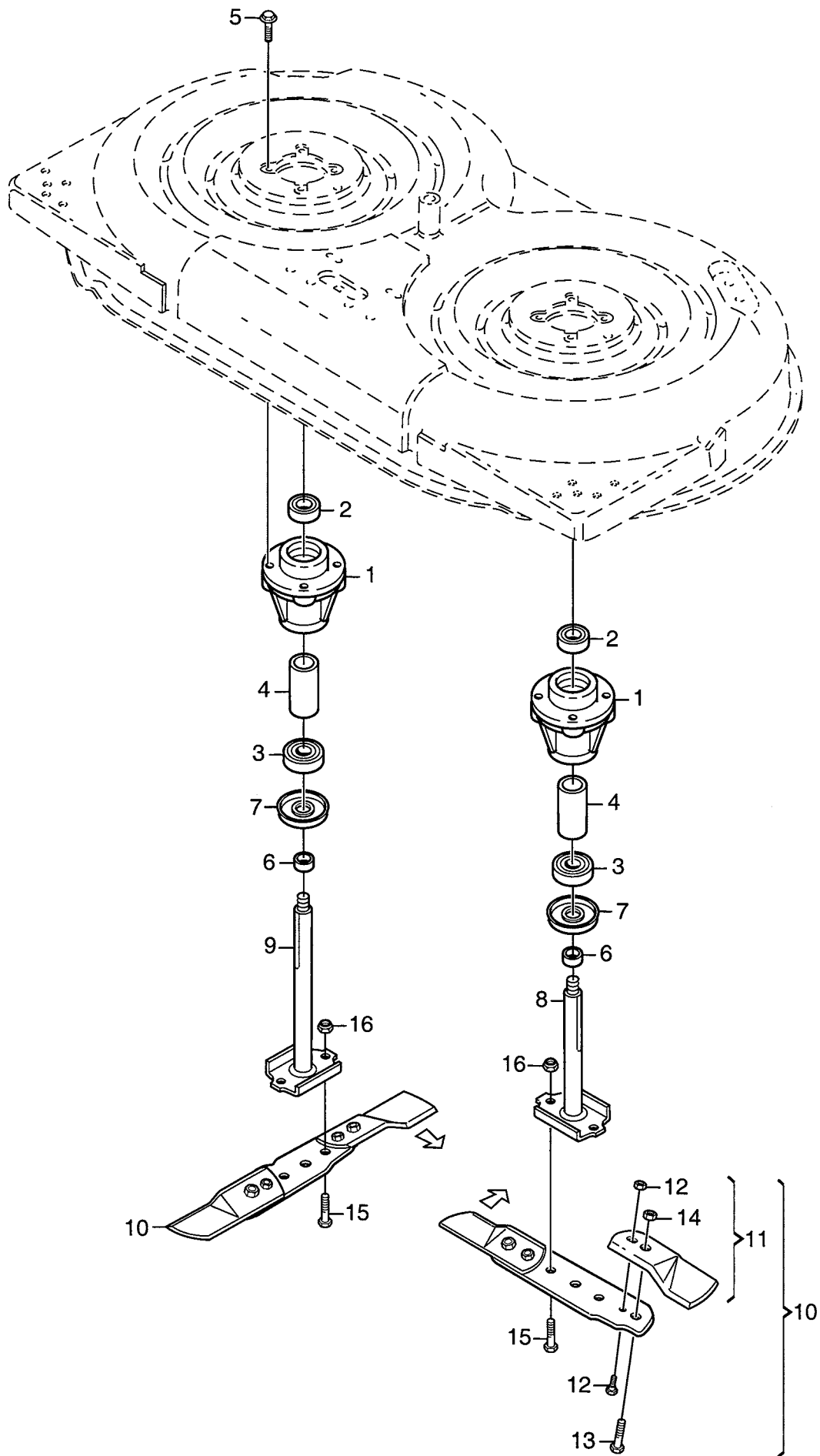
Utgåva Issue 2005- 11		Bildnr Picture No 1348A		READY- VILLA KLIPPAGGREGAT 85M RAM		READY- VILLA MOWER DECK 85M FRAME		Sida Page 266	
Pos. Fig.	Antal/Quantity				Art nr Part No	Benämning	Description	Sats Kit	Anmärkning Notes
	2940								
1	1				1134-5523-01	Ram .....	Frame .....		Sats 4 st/Kit of 4
2	1				1134-5625-01	Aggregatsfjäder .....	Mower deck spring .....		
3	1				1134-5026-02	Kätting .....	Chain .....		
4	1				1134-0304-05	Axel .....	Shaft .....		
5	2				9935-1020-16	Skruv .....	Screw .....		
6	8				1134-2406-01	Skyddsrulle .....	Guard roller .....		
7	2				1134-2405-01	Kåphjul .....	Casing wheel .....		
8	4				1134-3047-01	Distans .....	Spacer .....		
9	2				9699-0104-02	Bricka .....	Washer .....		
10	1				1134-3025-01	Kåpa- gul .....	Casing- yellow .....		
11	2				1134-4991-01	Aggregatsarm .....	Mower deck arm .....		
12	1				1134-9026-01	Lagerbussning .....	Bearing bush kit .....		
13	2				9598-0003-02	Låsnål .....	Spring pin .....		
14	2				9898-1035-16	Skruv .....	Screw .....		
15	2				9747-1031-02	Låsmutter .....	Lock nut .....		
16	2				9501-0502-00	Smörjnippel .....	Grease joint .....		
97	2				9402-3523-01	Sidodekal .....	Side decal .....		



Utgåva Issue 2005- 11		Bildnr Picture No 1349A		READY- VILLA KLIPPAGGREGAT 85M REGLAGE		READY- VILLA MOWER DECK 85M CONTROLS		Sida Page 268	
Pos. Fig.	Antal/Quantity				Art nr Part No	Benämning	Description	Sats Kit	Anmärkning Notes
	2940								
1	1				1134-3015-01	Justerstag- hö.....	Adjusting bracket- R.H .....		Ej ill/not ill.
2	1				1134-3015-02	Justerstag- vä .....	Adjusting bracket- L.H .....		
3	4				9959-0820-16	Skruv .....	Screw .....		
4	4				9739-0831-22	Mutter .....	Nut .....		
5	1				1134-5056-01	Fäste- hö .....	Bracket- R.H .....		Ej ill/not ill.
6	1				1134-5056-02	Fäste- vä .....	Bracket- L.H .....		
7	4				9959-0820-16	Skruv .....	Screw .....		
8	4				9739-0831-22	Mutter .....	Nut .....		
9	2				1134-2907-03	Pivotplatta .....	Pivoting plate .....		
10	4				1134-0240-00	Ansattsskruv .....	Shoulder screw .....		
11	4				9747-0831-02	Mutter .....	Lock nut .....		
12	1				1134-2411-01	Fäste .....	Bracket .....		
13	2				9959-0820-16	Skruv .....	Screw .....		
14	2				9739-0831-22	Mutter .....	Nut .....		
15	1				1134-3013-01	Parallellaxel .....	Shaft .....		
16	2				1134-0240-00	Ansattsskruv .....	Shoulder screw .....		
17	2				9747-0831-02	Mutter .....	Lock nut .....		
18	2				1134-1833-02	Stag .....	Rod .....		
19	4				9675-0012-02	Starlock .....	Locking washer .....		
20	1				1134-3011-01	Höjdinställn.segment .....	Height adj. quadrant .....		
21	3				9959-0820-16	Skruv .....	Screw .....		
22	3				9739-0831-22	Mutter .....	Nut .....		
23	1				1134-5215-01	Höjdinställn.spak kpl .....	Height adj.lever assy .....		Inkl. pos 27 - 34, 37
24	1				1134-2427-01	Distans .....	Spacer .....		
25	1				9997-0825-16	Skruv .....	Screw .....		
26	1				9747-0831-02	Mutter .....	Lock nut .....		
27	1				1134-3010-02	• Låssegment .....	• Locking quadrant .....		
28	1				9997-0620-16	• Skruv .....	• Screw .....		
29	1				9747-0631-02	• Låsmutter .....	• Lock nut .....		
30	1				1134-3262-01	• Tryckfjäder .....	• Compression spring .....		
31	1				1134-3009-01	• Låskil .....	• Locking key .....		
32	1				1134-3041-01	• Reglagestång .....	• Control rod .....		
33	1				1134-3051-01	• Spärrknapp .....	• Locking knob .....		
34	1				9406-0006-00	• Handtag .....	• Handle .....		
35	1				1134-3026-02	Höjdvisningsplåt .....	Height measure plate .....		
36	1				9945-0816-16	Skruv .....	Screw .....		
37	1				1134-5114-01	• Distans .....	• Spacer .....		

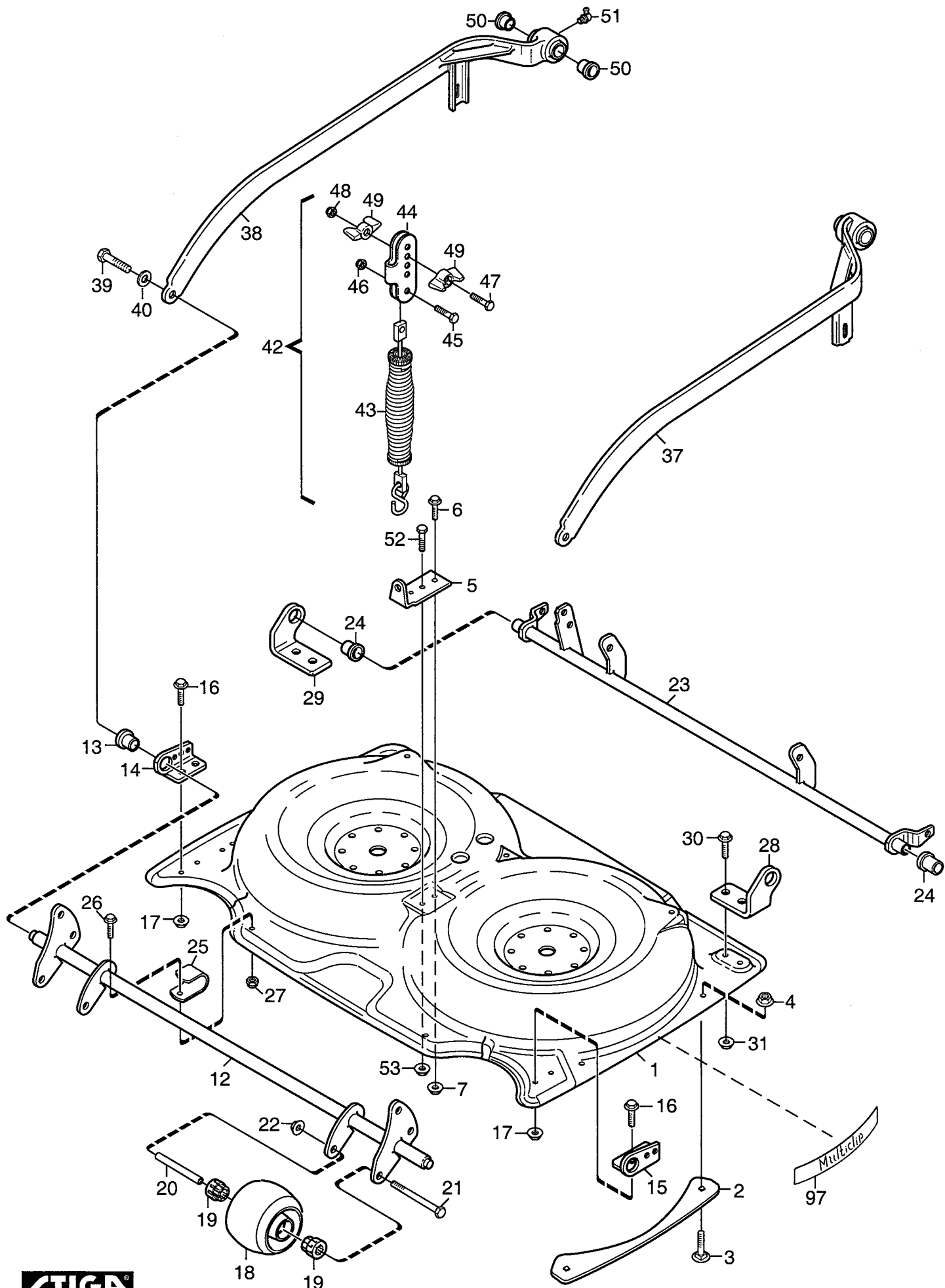


Utgåva Issue 2005- 11		Bildnr Picture No 1350B		READY- VILLA KLIPPAGGREGAT 85M TRANSMISSION		READY- VILLA MOWER DECK 85M TRANSMISSION		Sida Page 270	
Pos. Fig.	Antal/Quantity				Art nr Part No	Benämning	Description	Sats Kit	Anmärkning Notes
	2940								
1	3				1134-3632-01	Clips-remstyrning .....	Clips- belt guide .....		
2	1				1134-4983-01	Transmissionskåpa .....	Transmission cover .....		
3	1				9942-0850-12	Skruv .....	Screw .....		
4	1				9699-0062-02	Planbricka.....	Flat washer .....		
5	1				9997-0620-16	Skruv .....	Screw .....		
6	1				9699-0100-02	Bricka .....	Washer .....		
7	2				9699-0104-02	Bricka .....	Washer .....		
8	1				1134-4988-01	Remskiva.....	Belt pulley .....		
9	1				1134-3679-02	Kuggremskiva kpl .....	Toothed belt pulley.....		
10	1				1134-3598-01	• Remskivsplatta .....	• Plate- belt pulley.....		
11	2				1134-3597-01	• Medbringare .....	• Reinforcement.....		
12	2				9997-0630-12	• Skruv .....	• Screw .....		
13	2				9747-0631-02	• Låsmutter .....	• Lock nut .....		
14	1				1134-5236-01	Bricka .....	Washer .....		
15	1				9600-0147-00	Kil .....	Key .....		L = 40 mm
16	1				1134-4775-01	Låsmutter .....	Lock nut .....		
17	4				9699-0104-02	Bricka .....	Washer .....		
18	1				1134-3679-01	Kuggremskiva kpl .....	Toothed belt pulley.....		
19	1				1134-3597-01	• Medbringare .....	• Reinforcement.....		
20	2				9997-0625-16	• Skruv .....	• Screw .....		
21	2				9747-0631-02	• Låsmutter .....	• Lock nut .....		
22	1				1134-5236-01	Bricka .....	Washer .....		
23	1				1134-0323-01	Kil .....	Key .....		L = 25 mm
24	1				1134-4775-01	Låsmutter .....	Lock nut .....		
25	1				9585-0135-01	Kuggrem.....	Toothed belt .....		
26	1				1134-9076-01	Drivrem .....	Drive belt.....		= 9585-0134-01
27	1				1134-3014-01	Remspännare .....	Belt tensioner.....		
28	1				9959-0820-16	Skruv .....	Screw .....		
29	1				9739-0831-22	Mutter.....	Nut .....		

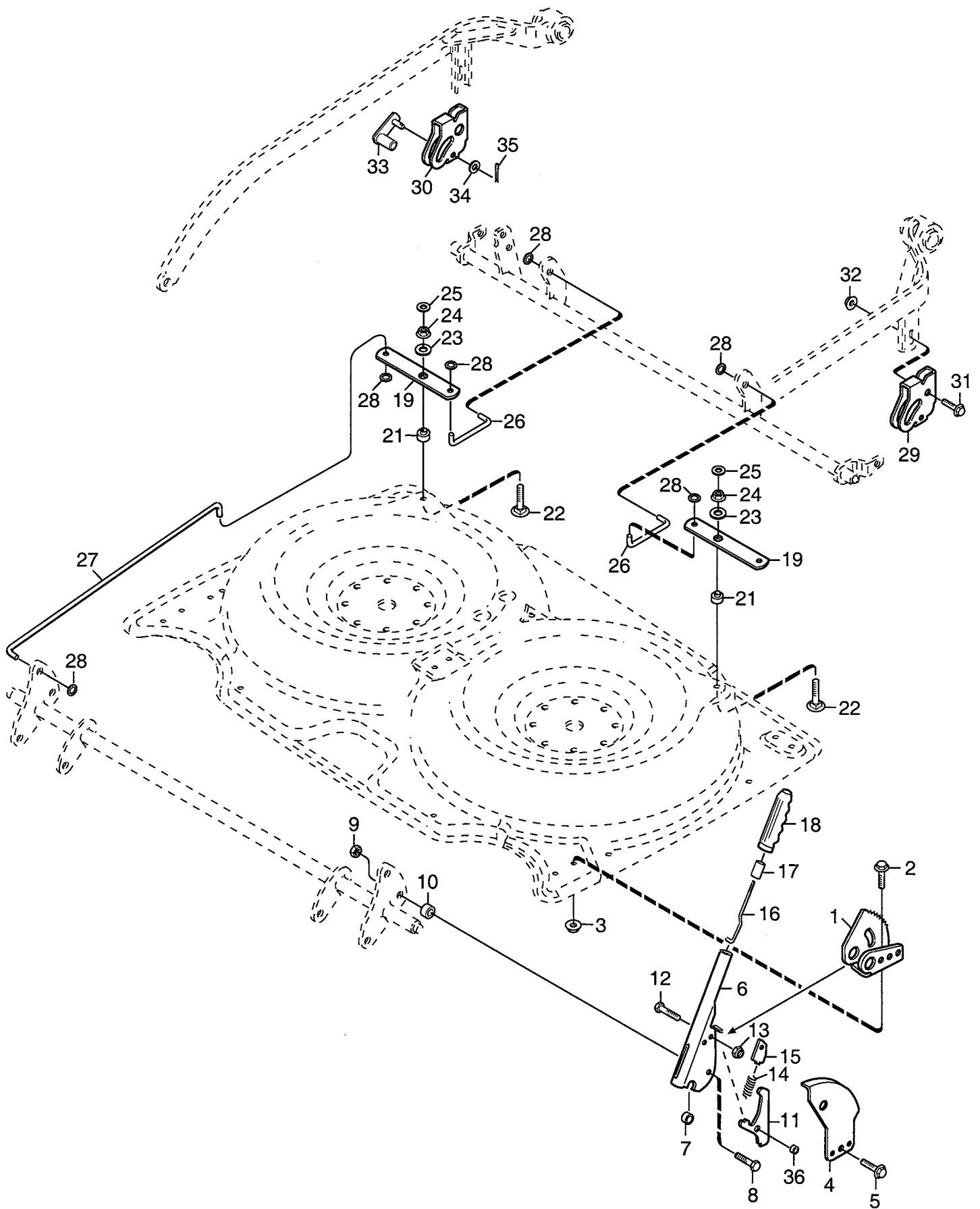




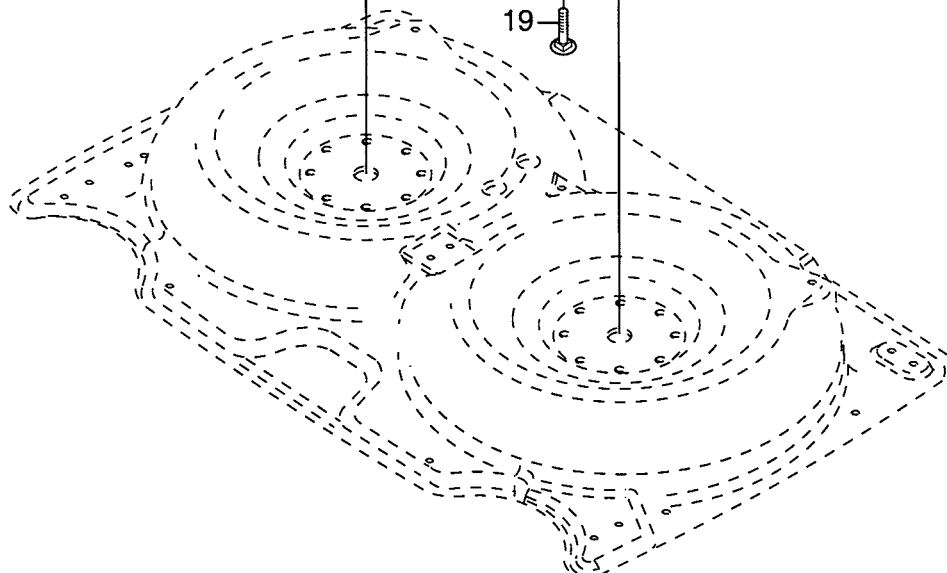
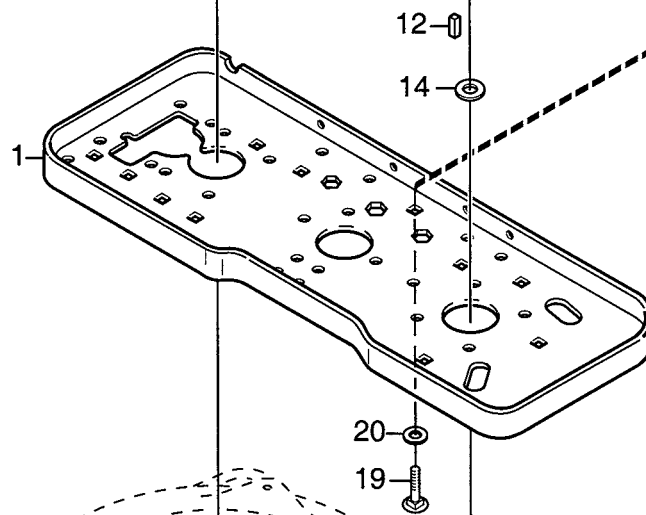
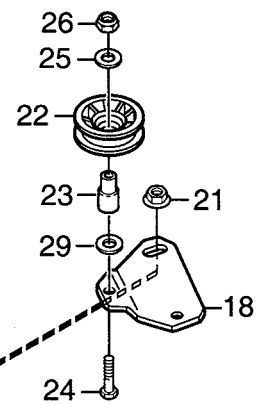
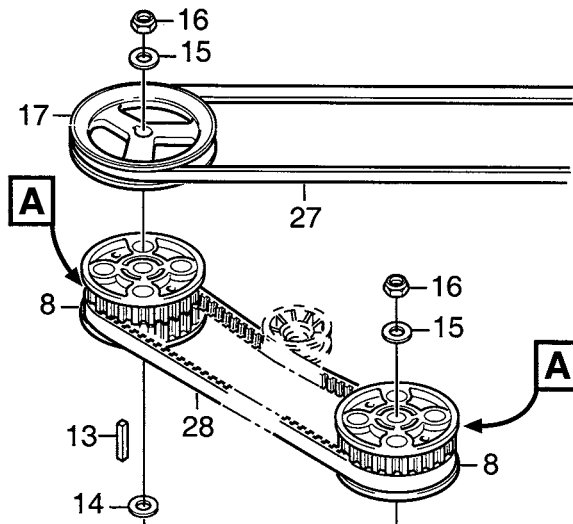
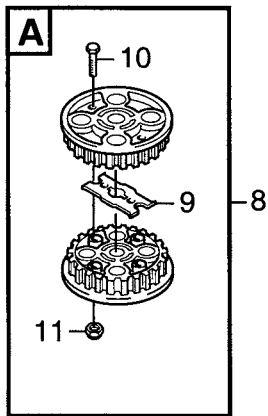
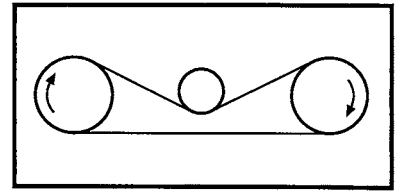
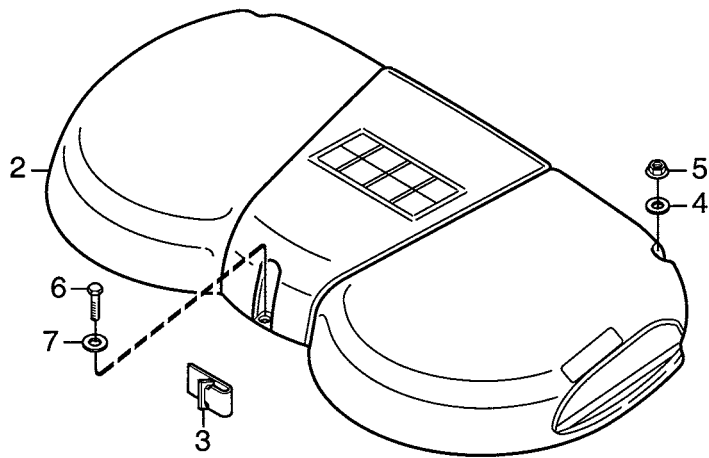
Utgåva Issue 2005- 11		Bildnr Picture No 1351A		READY- VILLA KLIPPAGGREGAT 85M KNIVAR		READY- VILLA MOWER DECK 85M BLADES		Sida Page 272	
Pos. Fig.	Antal/Quantity				Art nr Part No	Benämning	Description	Sats Kit	Anmärkning Notes
	2940								
1	2				1134-3841- 01 Lagerbox kpl.....	Bearing box assy.....			Sats 2 st/Kit of 2 2 knivar/2 blade tips 6 bultar/6 bolts+nuts
2	1				9549-0019- 00 • Kullager .....	• Ball bearing .....			
3	1				9549-0020- 00 • Kullager .....	• Ball bearing .....			
4	1				1134-0051- 05 • Distans .....	• Spacer.....			
5	8				9945-0825- 16 Skruv .....	Screw .....			
6	2				1134-3725- 01 Distans .....	Spacer.....			
7	2				1134-5130- 01 Skyddsbricka .....	Bearing cover .....			
8	1				1134-4600- 01 Knivaxel .....	Blade shaft .....			
9	1				1134-4600- 05 Knivaxel .....	Blade shaft .....			
10	1				1134-9080- 01 Knivbalk kpl .....	Blade bar assy .....			
11	2				1134-9082- 01 • Knivsats kpl .....	• Blade kit .....			
12	1				1134-9054- 01 •• Brytbultsats .....	•• Shear bolt kit .....			
13	2				9997-0816- 16 •• Skruv .....	•• Screw .....			
14	2				9712-0831- 02 •• Låsmutter .....	•• Lock nut .....			
15	4				9997-0820- 16 Skruv .....	Screw .....			
16	4				9747-0831- 02 Mutter.....	Lock nut.....			



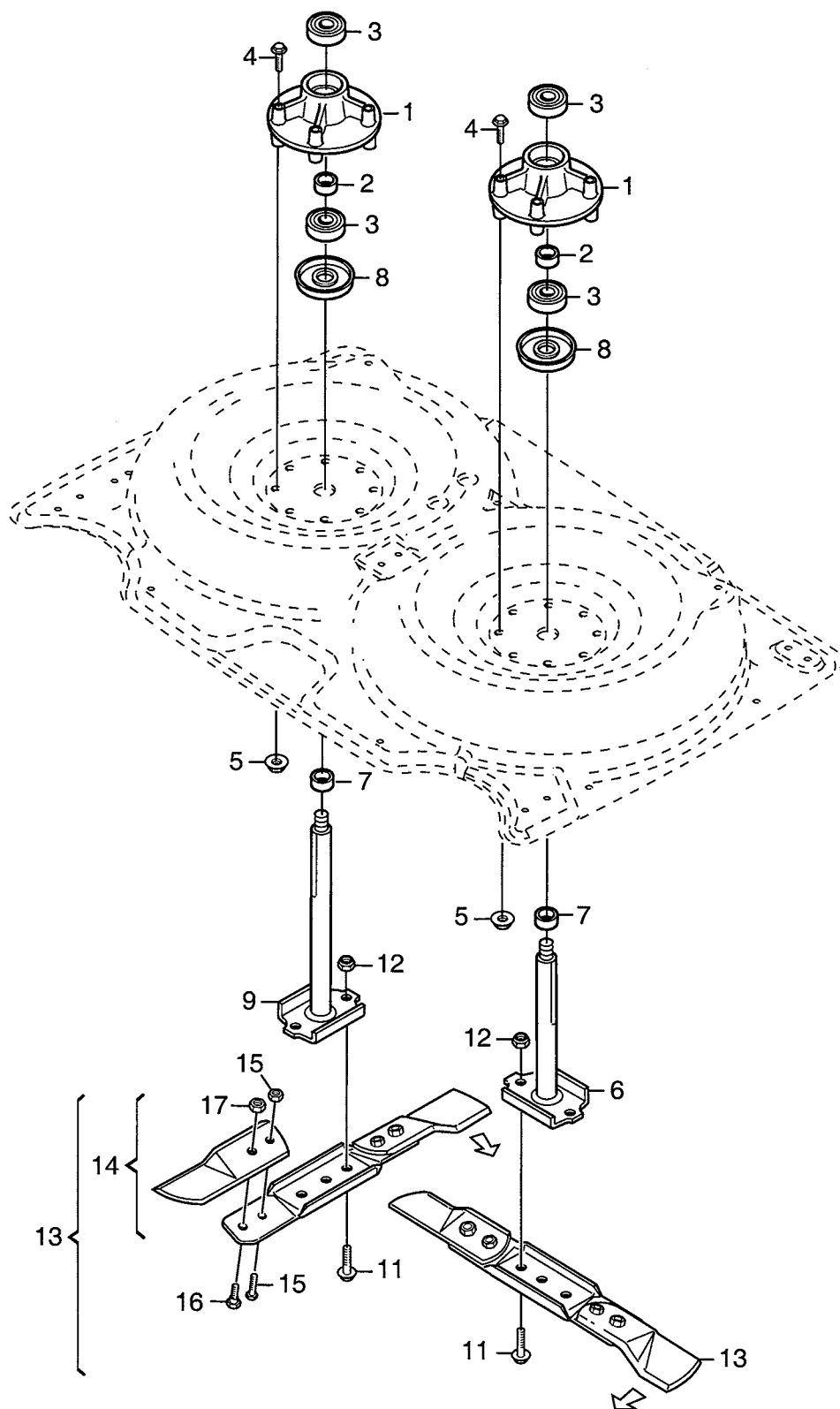
Utgåva Issue 2005- 11		Bildnr Picture No 1168B		READY- VILLA KLIPPAGGREGAT 92M RAM		READY- VILLA MOWER DECK 92M FRAME		Sida Page 274	
Pos. Fig.	Antal/Quantity				Art nr Part No	Benämning	Description	Sats Kit	Anmärkning Notes
	2929								
1	1				1134-4888-01	Kåpa .....	Casing .....		Sats 4 st/kit of 4
2	2				1134-4323-01	Ledplåt .....	Guide plate .....		
3	4				9897-0616-16	Vagnsbult .....	Carriage bolt .....		
4	4				9739-0631-22	Mutter .....	Nut .....		
5	1				1134-4320-06	Lyftöra .....	Lift bracket .....		
6	1				9959-0820-16	Skruv .....	Screw .....		
7	1				9739-0831-22	Mutter .....	Nut .....		
12	1				1134-4890-01	Framaxel .....	Front axle .....		
13	1				1134-9024-01	Lager .....	Bearing .....		
14	1				1134-4292-01	Lagerfäste .....	Bearing holder .....		
15	1				1134-4292-02	Lagerfäste .....	Bearing holder .....		
16	2				9959-0816-16	Skruv .....	Screw .....		
17	2				9739-0831-22	Mutter .....	Nut .....		
18	2				1134-4284-01	Hjul .....	Wheel .....		
19	4				1134-4319-01	Lager .....	Bearing .....		
20	2				1134-4318-01	Hylsa .....	Wheel axle .....		
21	2				9997-0812-02	Skruv .....	Screw .....		
22	2				9739-0831-22	Mutter .....	Nut .....		
23	1				1134-5892-01	Bakaxel .....	Rear axle .....		
24	1				1134-9024-01	Lager .....	Bearing .....		
25	2				1134-4689-01	Stöd .....	Support .....		
26	2				9959-0616-16	Skruv .....	Screw .....		
27	2				9747-0631-02	Låsmutter .....	Lock nut .....		
28	1				1134-5180-01	Fäste- vä .....	Bracket- LH .....		
29	1				1134-5180-02	Fäste- hö .....	Bracket- RH .....		
30	4				9959-0816-16	Skruv .....	Screw .....		
31	4				9739-0831-22	Mutter .....	Nut .....		
37	1				1134-5599-01	Aggregatsarm- vä .....	Mower deck arm- LH .....		
38	1				1134-5599-02	Aggregatsarm- hö .....	Mower deck arm- RH .....		
39	2				9997-1016-16	Skruv .....	Screw .....		
40	2				9699-0030-02	Planbricka .....	Flat washer .....		
42	1				1134-4805-01	Lyftfjäder kpl .....	Lift spring assy .....		
43	1				1134-4574-02	• Fjäder .....	• Spring .....		
44	1				1134-4577-01	• Pendel .....	• Spring pivot .....		
45	1				9997-0825-16	• Skruv .....	• Screw .....		
46	1				9747-0831-02	• Mutter .....	• Lock nut .....		
47	1				9997-0835-12	• Skruv .....	• Screw .....		
48	1				9747-0831-02	• Mutter .....	• Lock nut .....		
49	2				1134-4481-01	• Vingmutter .....	• Wing nut .....		
50	1				1134-9026-01	Lagerbussning .....	Bearing bush kit .....		
51	2				9501-0502-00	Smörjnippel .....	Grease joint .....		
52	1				9997-0620-16	Skruv .....	Screw .....		
53	1				9739-0631-22	Mutter .....	Nut .....		
97	2				9402-3523-01	Sidodekal .....	Side decal .....		



Utgåva Issue 2005- 11		Bildnr Picture No 1169B		READY- VILLA KLIPPAGGREGAT 92M REGLAGE		READY- VILLA MOWER DECK 92M CONTROLS		Sida Page 276	
Pos. Fig.	Antal/Quantity				Art nr Part No	Benämning	Description	Sats Kit	Anmärkning Notes
	2929								
1	1				1134-4536-01	Höjdsegment .....	Height adj. quadrant.....		Inkl. pos 11 - 18, 36
2	2				9959-0816- 16	Skruv .....	Screw .....		
3	2				9739-0831- 22	Mutter.....	Nut .....		
4	1				1134-4291- 03	Höjdvinsningsplåt .....	Height adjust plate .....		
5	1				9945-0816- 16	Skruv .....	Screw .....		
6	1				1134-5215-01	Höjdinställn.spak kpl .....	Height adj.lever assy .....		
7	1				1134-2427-01	Distans .....	Spacer .....		
8	1				9997-0840- 16	Skruv .....	Screw .....		
9	1				9747-0831- 02	Mutter.....	Lock nut .....		
10	1				1134-3113- 03	Distans .....	Spacer .....		
11	1				1134-3010- 02	• Låssegment.....	• Locking quadrant .....		
12	1				9997-0620- 16	• Skruv .....	• Screw .....		
13	1				9747-0631- 02	• Låsmutter .....	• Lock nut .....		
14	1				1134-3262- 01	• Tryckfjäder .....	• Compression spring.....		
15	1				1134-3009- 01	• Låskil .....	• Locking key .....		
16	1				1134-3041- 01	• Reglagestång .....	• Control rod .....		
17	1				1134-3051- 01	• Spärrknapp .....	• Locking knob .....		
18	1				9406-0006- 00	• Handtag .....	• Handle.....		
19	2				1134-4296- 02	Länkarm .....	Pivot arm .....		
21	2				1134-4298- 02	Distans .....	Spacer .....		
22	2				9897-0850- 12	Skruv .....	Screw .....		
23	2				9699-0028- 02	Planbricka.....	Flat washer .....		
24	2				9747-0831- 02	Mutter.....	Lock nut .....		
25	2				9699-0056- 02	Planbricka.....	Flat washer .....		
26	2				1134-4894- 03	Tryckstång .....	Push rod .....		
27	2				1134-4294- 04	Tryckstång .....	Push rod .....		
28	8				9675-0012- 02	Starlock .....	Locking washer .....		
29	1				1134-4304- 01	Justerplåt- vä .....	Adjusting plate- L.H. ....		
30	1				1134-4304- 02	Justerplåt- hö .....	Adjusting plate- R.H. ....		
31	2				9959-0816- 16	Skruv .....	Screw .....		
32	2				9739-0831- 22	Mutter.....	Nut .....		
33	2				1134-4307- 01	Låshake .....	Catch .....		
34	2				9699-0025- 02	Planbricka.....	Washer .....		
35	2				9599-0054- 02	Saxpinne.....	Cotter pin .....		
36	1				1134-5114- 01	• Distans .....	• Spacer .....		

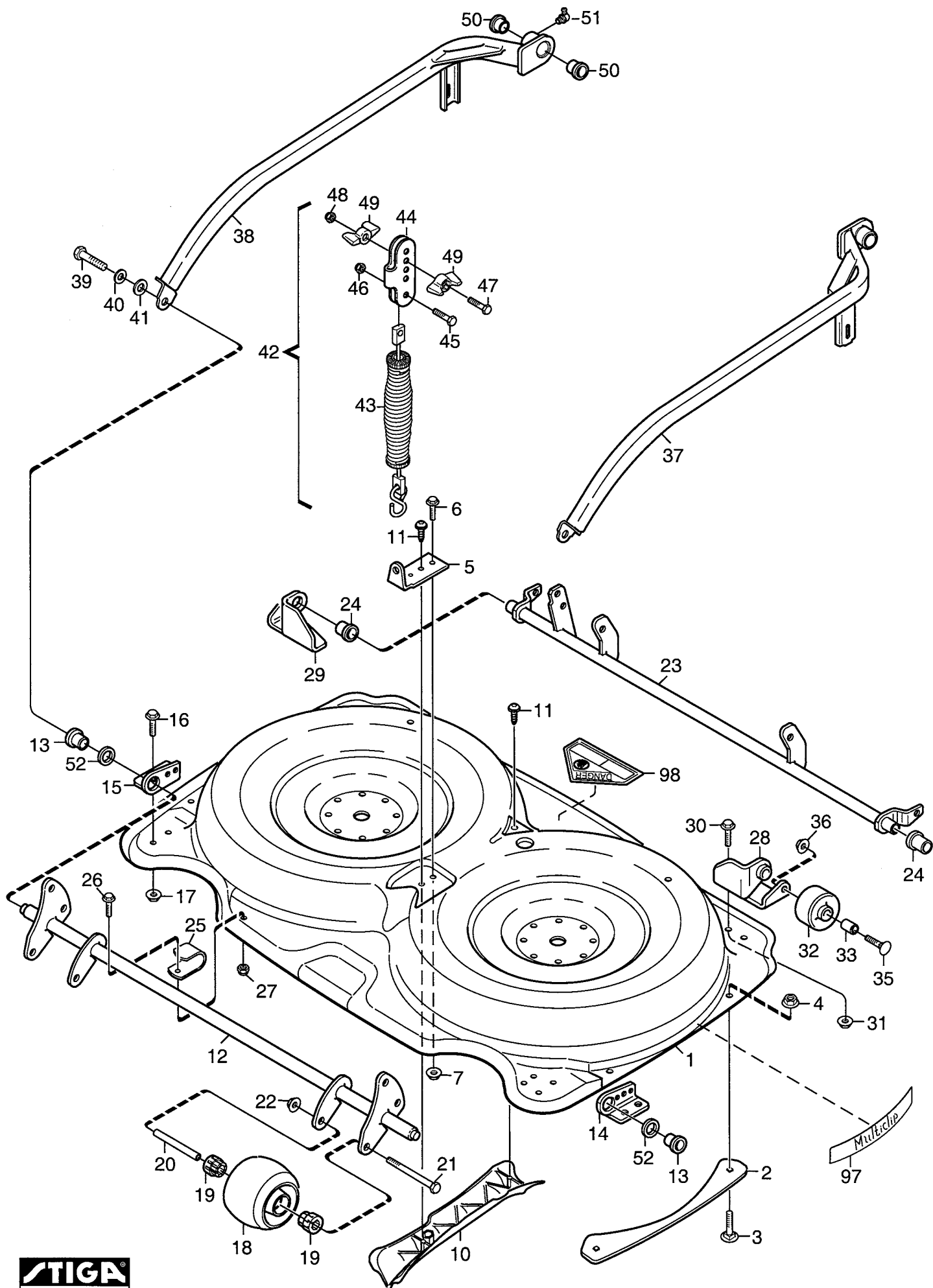


Utgåva Issue		Bildnr Picture No		READY- VILLA KLIPPAGGREGAT 92M TRANSMISSION		READY- VILLA MOWER DECK 92M TRANSMISSION		Sida Page	
2005- 11		1171A						278	
Pos. Fig.	Antal/Quantity				Art nr Part No	Benämning	Description	Sats Kit	Anmärkning Notes
	2929								
1	1				1134-5229-01	Transmissionsplatta.....	Transmission plate.....		
2	1				1134-4887-01	Transmissionskåpa.....	Transmission cover.....		
3	3				1134-3632-01	Clips- remstyrning .....	Clips- belt guide .....		
4	2				9699-0028-02	Planbricka.....	Flat washer.....		
5	2				9747-0831-02	Mutter.....	Lock nut.....		
6	1				9942-0612-16	Skruv .....	Screw .....		
7	1				9699-0060-02	Planbricka.....	Flat washer.....		
8	2				1134-3679-01	Kuggremskiva kpl.....	Toothed belt pulley.....		
9	1				1134-3597-01	• Medbringare .....	• Reinforcement.....		
10	2				9997-0625-16	• Skruv .....	• Screw .....		
11	2				9747-0631-02	• Låsmutter .....	• Lock nut.....		
12	1				1134-0323-01	Kil .....	Key.....		L = 25 mm
13	1				1134-0323-04	Kil .....	Key.....		L = 45 mm
14	2				9699-0104-02	Bricka .....	Washer.....		
15	2				9699-0121-02	Planbricka.....	Flat washer.....		
16	2				9712-1231-02	Låsmutter .....	Lock nut.....		
17	1				1134-4733-01	Remskiva.....	Belt pulley .....		
18	1				1134-4537-01	Spännarm .....	Tension arm .....		
19	2				9897-0825-16	Skruv .....	Screw .....		
20	2				9699-0036-02	Planbricka.....	Flat washer.....		
21	2				9739-0831-22	Mutter.....	Nut.....		
22	1				1134-4686-01	Spännrulle .....	Tension roller .....		
23	1				1134-4316-03	Tapp.....	Shaft .....		
24	1				9997-1040-12	Skruv .....	Screw .....		
25	1				9699-0030-02	Planbricka.....	Flat washer.....		
26	1				1134-4775-01	Låsmutter .....	Lock nut.....		
27	1				1134-9069-01	Drivrem .....	V- belt.....		= 9585-0128-01
28	1				9585-0095-01	Kuggrem.....	Toothed belt .....		
29	1				9699-0035-02	Planbricka.....	Flat washer.....		



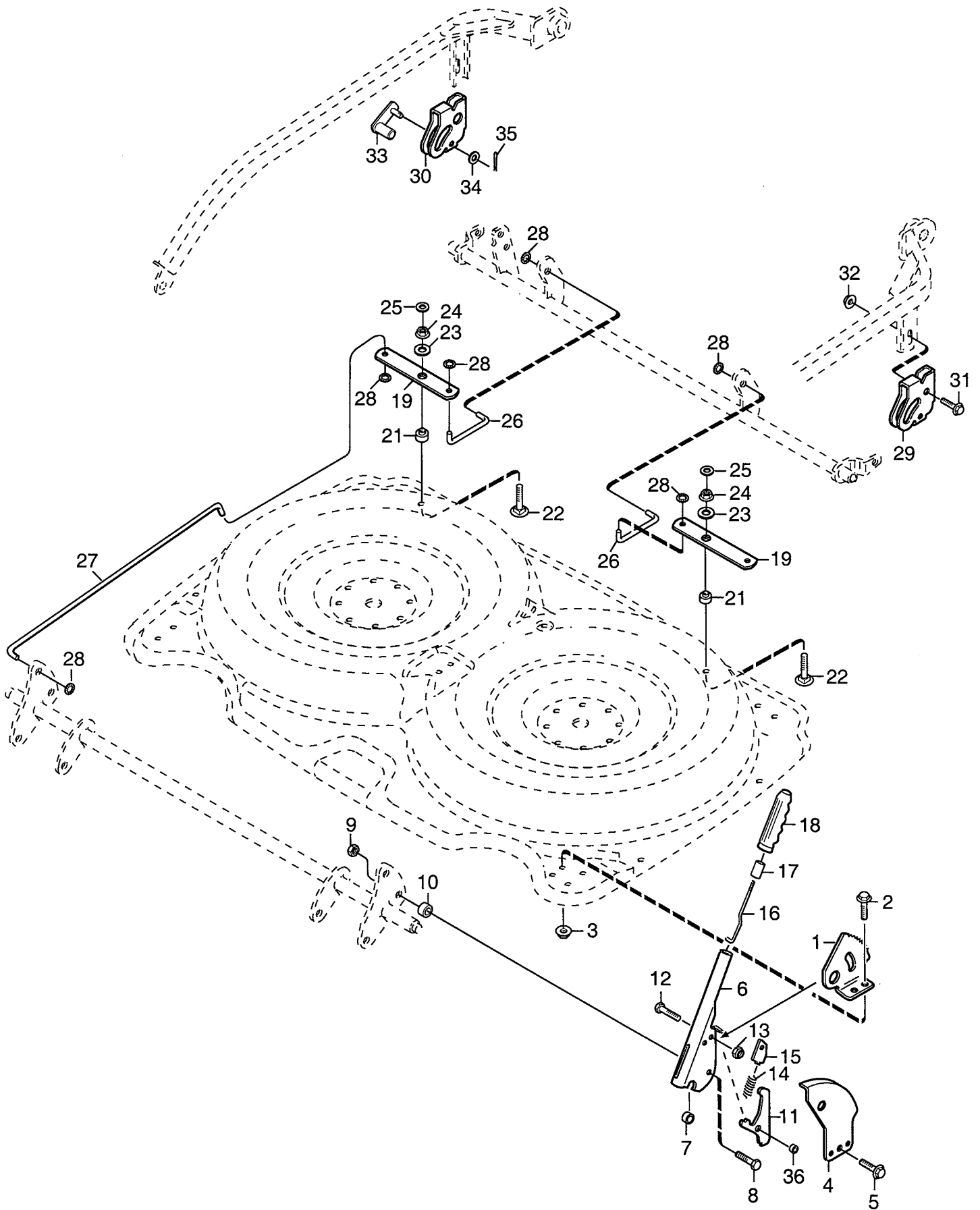


Utgåva Issue 2005- 11		Bildnr Picture No 1304		READY- VILLA KLIPPAGGREGAT 92M KNIVAR		READY- VILLA MOWER DECK 92M BLADES		Sida Page 280	
Pos. Fig.	Antal/Quantity				Art nr Part No	Benämning	Description	Sats Kit	Anmärkning Notes
	2929								
1	2				1134-5049-01 Lagerbox kpl.....	Bearing box assy.....		Sats 2 st/kit of 2 2 knivar/2 blade tips 6 bultar/6 bolts+nuts	
2	1				1134-3725-04 • Distans .....	• Spacer.....			
3	2				9549-0020-00 • Kullager .....	• Ball bearing .....			
4	8				9997-0865-12 Skruv .....	Screw .....			
5	8				9739-0831-22 Mutter.....	Nut .....			
6	1				1134-5052-04 Knivaxel .....	Blade shaft .....			
7	2				1134-3725-04 Distans .....	Spacer.....			
8	2				1134-5130-01 Skyddsbricka .....	Bearing cover.....			
9	1				1134-5052-03 Knivaxel .....	Blade shaft .....			
11	4				9997-0820-16 Skruv .....	Screw .....			
12	4				9747-0831-02 Mutter.....	Lock nut.....			
13	1				1134-9073-01 Knivbalk kpl .....	Blade bar assy.....			
14	2				1134-9074-01 • Knivsats kpl .....	• Blade kit assy.....			
15	1				1134-9054-01 •• Brytbultsats .....	•• Shear bolt kit.....			
16	2				1134-4479-01 •• Ansatsbult.....	•• Shoulder bolt.....			
17	2				9712-0831-02 •• Låsmutter .....	•• Lock nut .....			



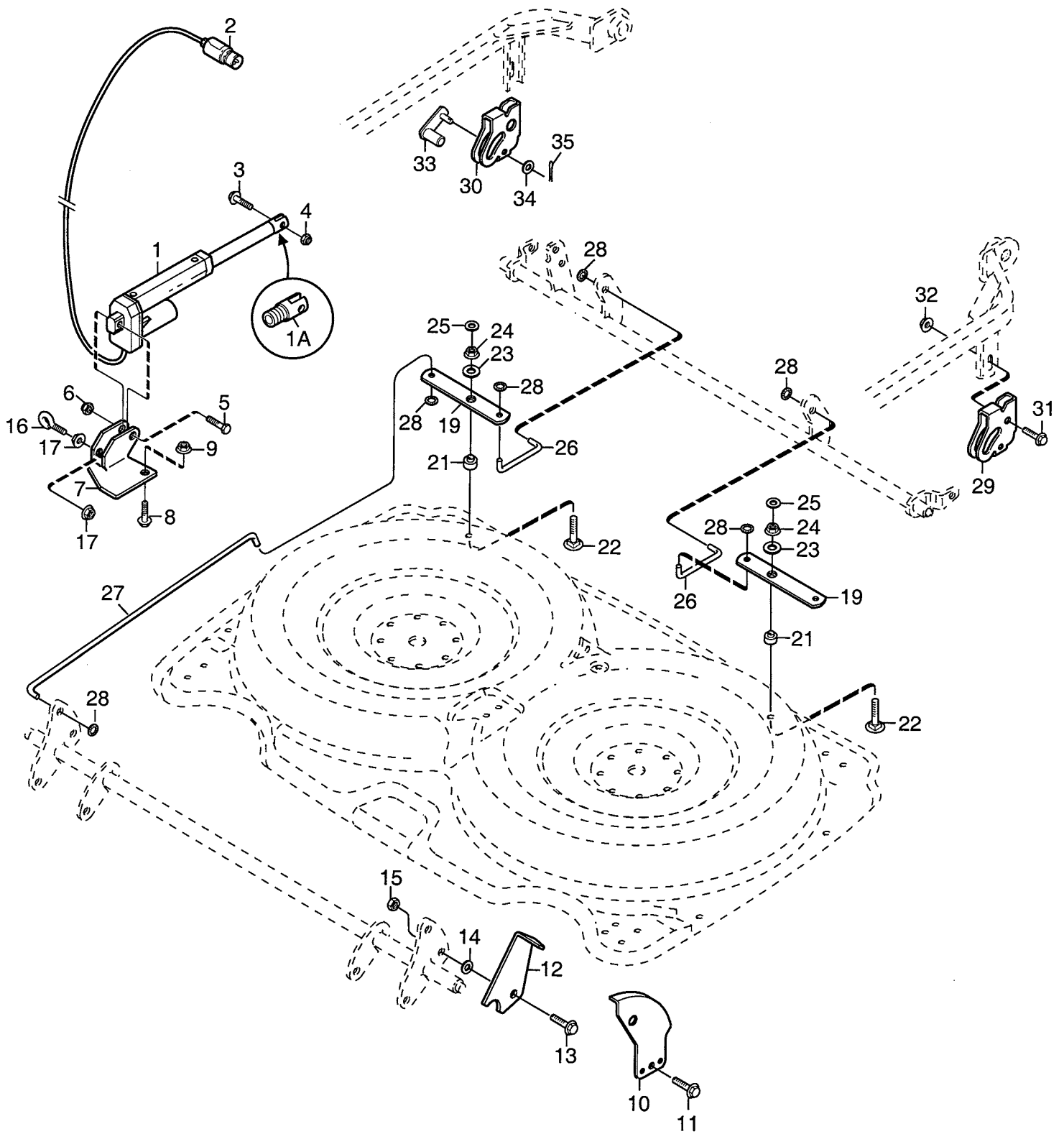
Utgåva Issue 2005- 11		Bildnr Picture No 1166B		VILLA KLIPPAGGREGAT 107M RAM		VILLA MOWER DECK 107M FRAME		Sida Page 282	
Pos. Fig.	Antal/Quantity				Art nr Part No	Benämning	Description	Sats Kit	Anmärkning Notes
	2930	2934							
1	1				1134-5187-01	Kåpa .....	Casing .....		
2	2				1134-4323-01	Ledplåt.....	Guide plate .....		
3	4				9897-0616-16	Vagnsbult .....	Carriage bolt .....		
4	4				9739-0631-22	Mutter.....	Nut .....		
5	1				1134-4320-06	Lyftöra .....	Lift bracket .....		
6	1				9959-0820-16	Skruv .....	Screw .....		
7	1				9739-0831-22	Mutter.....	Nut .....		
10	1				1134-4905-01	Ledskena .....	Guide bar .....		
11	2				9838-9530-12	Skruv .....	Screw .....		
12	1				1134-4890-01	Framaxel .....	Front axle .....		
13	1				1134-9024-01	Lager .....	Bearing.....		Sats 4 st/kit of 4
14	1				1134-4292-01	Lagerfäste.....	Bearing holder .....		
15	1				1134-4292-02	Lagerfäste.....	Bearing holder .....		
16	4				9959-0816-16	Skruv .....	Screw .....		
17	4				9739-0831-22	Mutter.....	Nut .....		
18	2				1134-4284-01	Hjul .....	Wheel .....		
19	4				1134-4319-01	Lager .....	Bearing.....		
20	2				1134-4318-01	Hylsa .....	Wheel axle.....		
21	2				9997-0812-02	Skruv .....	Screw .....		
22	2				9739-0831-22	Mutter.....	Nut .....		
23	1				1134-5892-01	Bakaxel .....	Rear axle .....		
24	1				1134-9024-01	Lager .....	Bearing.....		Sats 4 st/kit of 4
25	2				1134-4689-01	Stöd.....	Support .....		
26	2				9959-0616-16	Skruv .....	Screw .....		
27	2				9747-0631-02	Låsmutter .....	Lock nut.....		
28	1				1134-4299-01	Fäste- vä .....	Wheel attachment- L.H. ....		
29	1				1134-4299-02	Fäste- hö .....	Wheel attachment- R.H. ....		
30	4				9959-0816-16	Skruv .....	Screw .....		
31	4				9739-0831-22	Mutter.....	Nut .....		
32	2				1134-3434-01	Rulle .....	Roller .....		
33	2				1134-0041-05	Hylsa .....	Bushing.....		
35	2				9898-1060-12	Skruv .....	Screw .....		
36	2				9739-1031-22	Mutter.....	Nut .....		
37	1				1134-4544-01	Aggregatsarm- vä .....	Mower deck arm- L.H. ....		
38	1				1134-4544-02	Aggregatsarm- hö .....	Mower deck arm- R.H. ....		
39	2				9997-1016-16	Skruv .....	Screw .....		
40	2				9699-0030-02	Planbricka.....	Flat washer .....		10 x 26 x 2.0 17 x 30 x 3.0 Inkl. pos 43 - 49
41	2				9699-0104-02	Bricka .....	Washer .....		
42	1				1134-4688-02	Lyftfjäder kpl.....	Lift spring assy .....		
43	1				1134-4574-01	• Fjäder kpl .....	• Spring assy .....		
44	1				1134-4577-01	• Pendel.....	• Spring pivot .....		
45	1				9997-0825-16	• Skruv .....	• Screw .....		
46	1				9747-0831-02	• Mutter .....	• Lock nut.....		
47	1				9997-0835-12	• Skruv .....	• Screw .....		
48	1				9747-0831-02	• Mutter .....	• Lock nut.....		
49	2				1134-4481-01	• Vingmutter.....	• Wing nut .....		
50	1				1134-9026-01	Lagerbussning.....	Bearing bush kit .....		Sats 4 st/kit of 4
51	2				9501-0502-00	Smörjnippel .....	Grease joint .....		
52	2				1134-4745-01	Distansbricka.....	Spacer washer .....		
97	2				9402-3523-01	Sidodekal.....	Side decal .....		
98	1				9402-3124-00	Varn.decal "Danger" .....	Warn. label "Danger" .....		US, CA

X



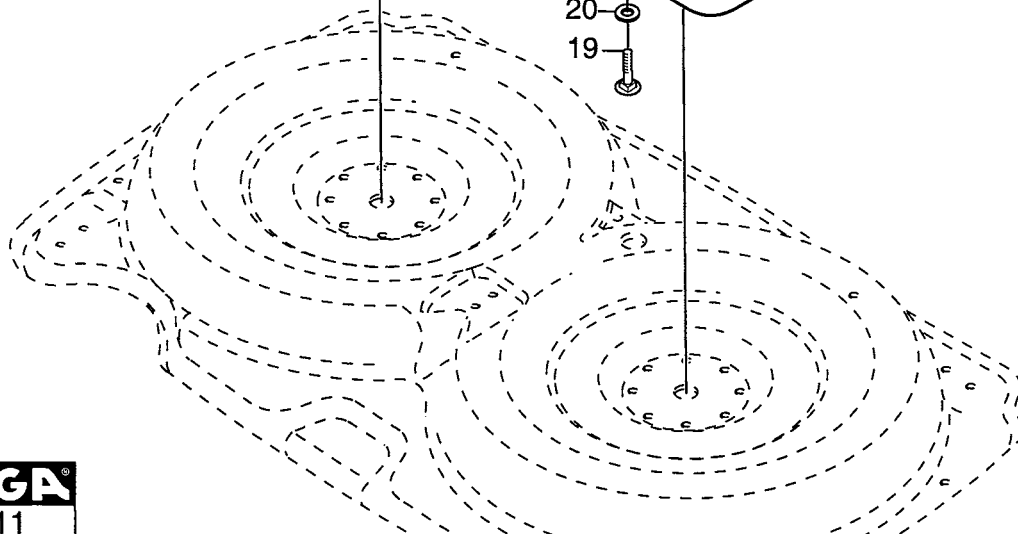
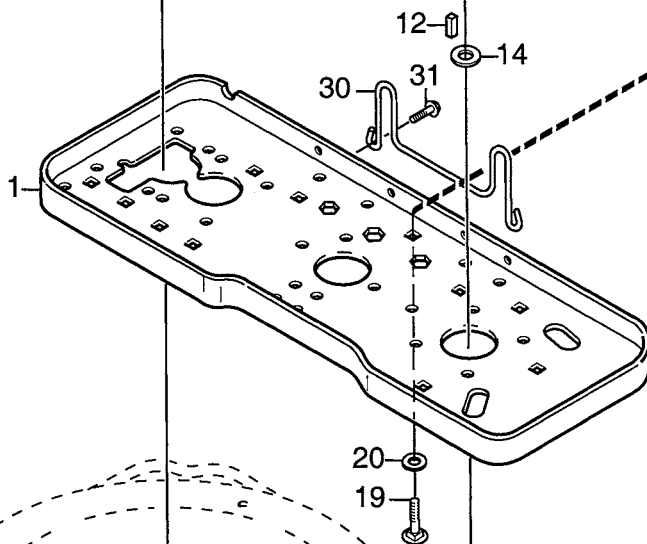
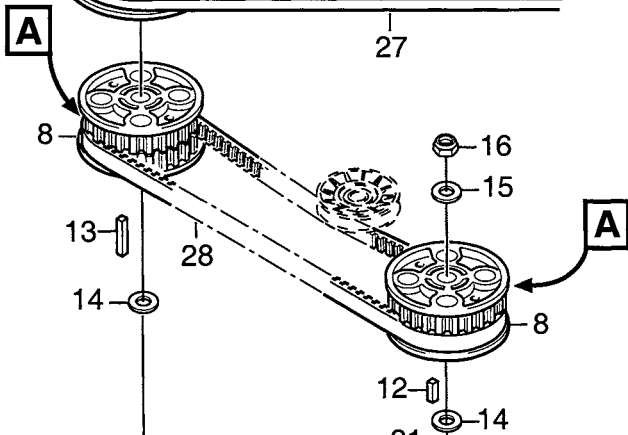
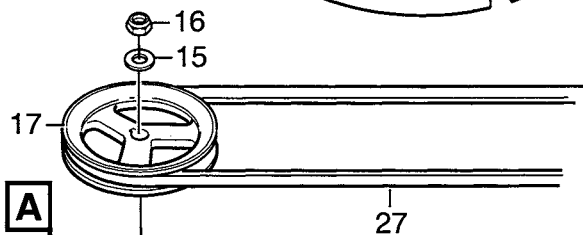
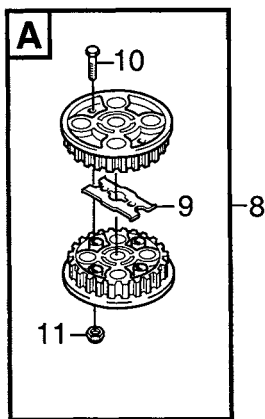
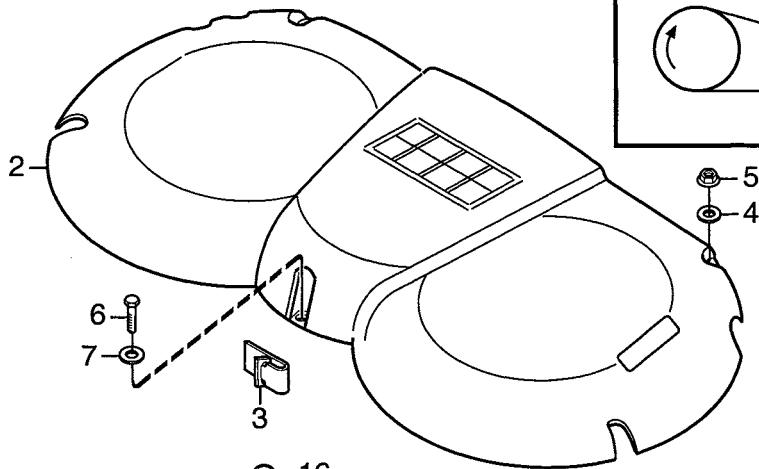
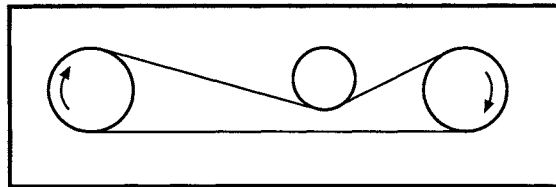
Utgåva Issue  2005- 11		Bildnr Picture No  1042C		VILLA KLIPPAGGREGAT 107M REGLAGE		VILLA MOWER DECK 107M CONTROLS		Sida Page  284	
Pos. Fig.	Antal/Quantity				Art nr Part No	Benämning	Description	Sats Kit	Anmärkning Notes
	2930								
1	1				1134-4290-01	Höjdsegment .....	Height adj. quadrant.....		Inkl. pos 11 - 18, 36
2	2				9959-0816-16	Skruv .....	Screw .....		
3	2				9739-0831-22	Mutter.....	Nut .....		
4	1				1134-4291-03	Höjdvinsningsplåt .....	Height adjust plate .....		
5	1				9945-0816-16	Skruv .....	Screw .....		
6	1				1134-5215-01	Höjdinställn.spak kpl .....	Height adj.lever assy .....		
7	1				1134-2427-01	Distans .....	Spacer.....		
8	1				9997-0840-16	Skruv .....	Screw .....		
9	1				9747-0831-02	Mutter.....	Lock nut.....		
10	1				1134-3113-03	Distans .....	Spacer.....		
11	1				1134-3010-02	• Låssegment.....	• Locking quadrant .....		
12	1				9997-0620-16	• Skruv .....	• Screw .....		
13	1				9747-0631-02	• Låsmutter .....	• Lock nut.....		
14	1				1134-3262-01	• Tryckfjäder .....	• Compression spring.....		
15	1				1134-3009-01	• Låskil .....	• Locking key .....		
16	1				1134-3041-01	• Reglagestång.....	• Control rod.....		
17	1				1134-3051-01	• Spärrknapp .....	• Locking knob .....		
18	1				9406-0006-00	• Handtag .....	• Handle.....		
19	2				1134-4296-02	Länkarm .....	Pivot arm .....		
21	2				1134-4298-02	Distans .....	Spacer.....		
22	2				9897-0850-12	Skruv .....	Screw .....		
23	2				9699-0028-02	Planbricka.....	Flat washer.....		
24	2				9747-0831-02	Mutter.....	Lock nut.....		
25	2				9699-0056-02	Planbricka.....	Flat washer.....		
26	2				1134-4894-04	Tryckstång .....	Push rod .....		
27	2				1134-4294-02	Tryckstång .....	Push rod .....		
28	8				9675-0012-02	Starlock .....	Locking washer.....		
29	1				1134-4304-01	Justerplåt- vä .....	Adjusting plate- L.H.....		
30	1				1134-4304-02	Justerplåt- hö.....	Adjusting plate- R.H.....		
31	2				9959-0816-16	Skruv .....	Screw .....		
32	2				9739-0831-22	Mutter.....	Nut .....		
33	2				1134-4307-01	Låshake .....	Catch.....		
34	2				9699-0025-02	Planbricka.....	Washer.....		
35	2				9599-0054-02	Saxpinne.....	Cotter pin .....		
36	1				1134-5114-01	• Distans .....	• Spacer.....		

X



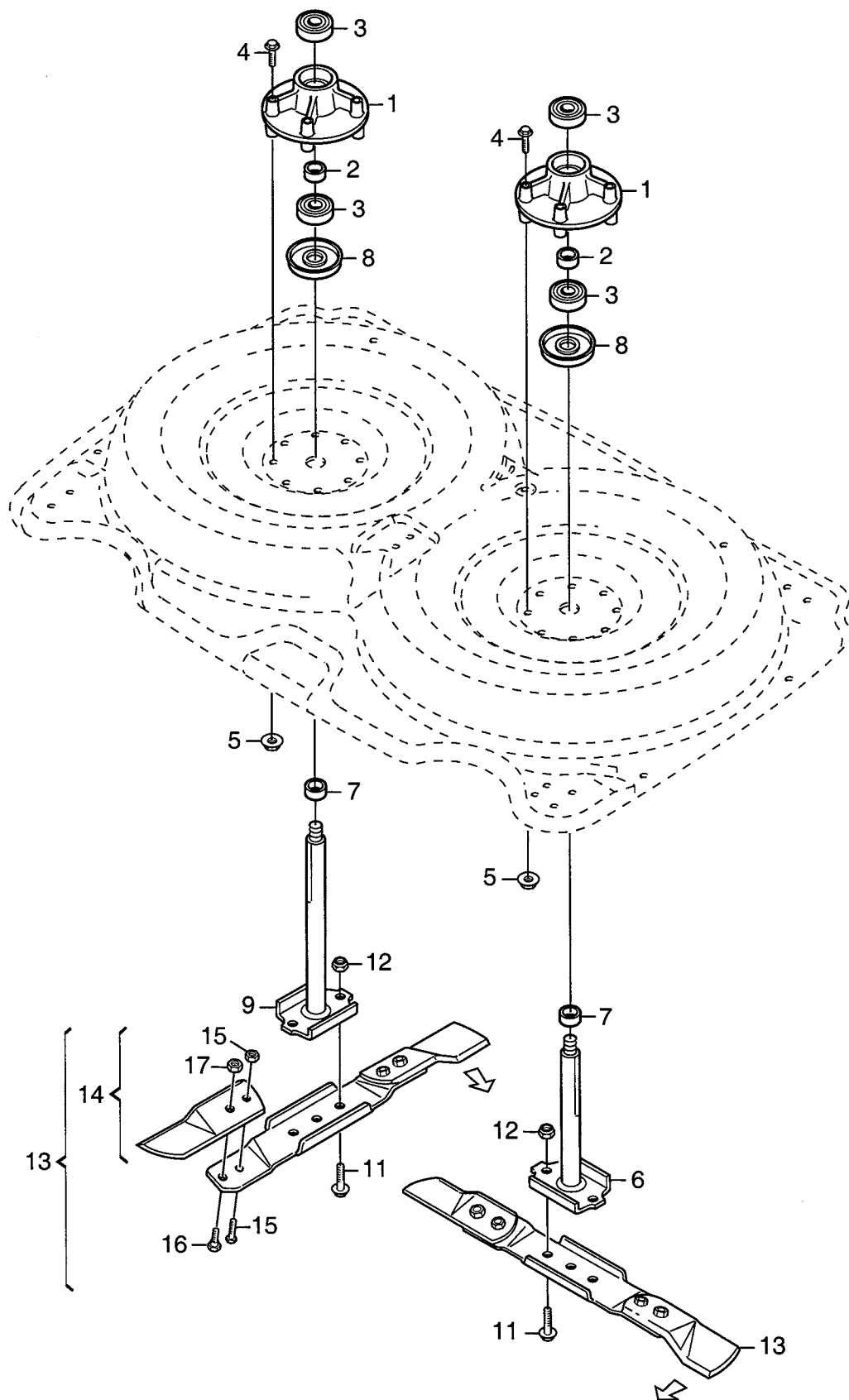
Utgåva Issue 2005- 11		Bildnr Picture No 1310A		VILLA KLIPPAGGREGAT 107M EL. REGLAGE		VILLA MOWER DECK 107M EL. CONTROL		Sida Page 286	
Pos. Fig.	Antal/Quantity				Art nr Part No	Benämning	Description	Sats Kit	Anmärkning Notes
	2934								
1	1				1134-4884-01	Ställdon .....	Electric lifter .....		
1 A	1				1139-0005-01	• Kolvstångsända .....	• Rod end .....		
2	1				1134-4057-01	• Hankontakt .....	• Male terminal .....		
3	1				9959-0830-16	Skruv .....	Screw .....		
4	1				9747-0831-02	Mutter .....	Lock nut .....		
5	1				9997-0840-16	Skruv .....	Screw .....		
6	1				9747-0831-02	Mutter .....	Lock nut .....		
7	1				1134-4877-01	Fäste .....	Bracket .....		
8	2				9959-0820-16	Skruv .....	Screw .....		
9	2				9739-0831-22	Mutter .....	Nut .....		
10	1				1134-4291-03	Höjdväpningsplåt .....	Height adjust plate .....		
11	1				9945-0816-16	Skruv .....	Screw .....		
12	1				1134-4883-01	Visare .....	Pointer .....		
13	1				9959-0830-16	Skruv .....	Screw .....		
14	1				9699-0056-02	Planbricka .....	Flat washer .....		
15	2				9739-0831-22	Mutter .....	Nut .....		
16	1				1134-2138-01	Skruvögla .....	Eye bolt .....		
17	2				9739-0831-22	Mutter .....	Nut .....		
19	2				1134-4296-02	Länkarm .....	Pivot arm .....		
21	2				1134-4298-02	Distans .....	Spacer .....		
22	2				9897-0850-12	Skruv .....	Screw .....		
23	2				9699-0028-02	Planbricka .....	Flat washer .....		
24	2				9747-0831-02	Mutter .....	Lock nut .....		
25	2				9699-0056-02	Planbricka .....	Flat washer .....		
26	2				1134-4894-04	Tryckstång .....	Push rod .....		
27	2				1134-4294-02	Tryckstång .....	Push rod .....		
28	8				9675-0012-02	Starlock .....	Locking washer .....		
29	1				1134-4304-01	Justerplåt- vä .....	Adjusting plate- L.H. ....		
30	1				1134-4304-02	Justerplåt- hö .....	Adjusting plate- R.H. ....		
31	2				9959-0816-16	Skruv .....	Screw .....		
32	2				9739-0831-22	Mutter .....	Nut .....		
33	2				1134-4307-01	Låshake .....	Catch .....		
34	2				9699-0025-02	Planbricka .....	Washer .....		
35	2				9599-0054-02	Saxpinne .....	Cotter pin .....		

X





Utgåva Issue 2005- 11		Bildnr Picture No 1311		VILLA KLIPPAGGREGAT 107M TRANSMISSION		VILLA MOWER DECK 107M TRANSMISSION		Sida Page 288	
Pos. Fig.	Antal/Quantity				Art nr Part No	Benämning	Description	Sats Kit	Anmärkning Notes
	2930	2934							
1	1				1134-5229-01	Transmissionsplatta.....	Transmission plate.....		L = 25 mm L = 45 mm                                                                                                                                                                                                                                                                                                                                                                                                                                                                                                                                                                                                                                                                                                                                                                                                                                                                                                                                                                                                                                                                                                                                                                                                                                                                                                                                                                                                                                                                                                                                                                                                                                                                                                                                                                                                                                                                                                                                                                                                                                                                                                                                                                                                                                                                                                                                                                                                                                                                                                                                                                                                                                                                                                                                    <



Utgåva Issue 2005- 11		Bildnr Picture No 1306		VILLA KLIPPAGGREGAT 107M KNIVAR		VILLA MOWER DECK 107M BLADES		Sida Page 290	
Pos. Fig.	Antal/Quantity				Art nr Part No	Benämning	Description	Sats Kit	Anmärkning Notes
	2930 2934								
1	2				1134-5049-01 Lagerbox kpl.....	Bearing box assy.....			
2	1				1134-3725-04 • Distans .....	• Spacer .....			
3	2				9549-0020-00 • Kullager .....	• Ball bearing .....			
4	8				9997-0865-12 Skruv .....	Screw .....			
5	8				9739-0831-22 Mutter.....	Nut .....			
6	1				1134-5052-04 Knivaxel.....	Blade shaft .....			
7	2				1134-3725-04 Distans .....	Spacer.....			
8	2				1134-5130-01 Skyddsbricka .....	Bearing cover.....			
9	1				1134-5052-03 Knivaxel.....	Blade shaft .....			
11	4				9997-0820-16 Skruv .....	Screw .....			
12	4				9747-0831-02 Mutter.....	Lock nut.....			
13	1				1134-9072-01 Knivbalk kpl .....	Blade bar assy.....			
14	2				1134-9074-01 • Knivsats kpl .....	• Blade kit assy .....			
15	1				1134-9054-01 •• Brytbultsats .....	•• Shear bolt kit.....			
16	2				1134-4479-01 •• Ansatsbult.....	•• Shoulder bolt.....			
17	2				9712-0831-02 •• Låsmutter .....	•• Lock nut .....			
									Sats 2 st/Kit of 2 2 knivar/2 blade tips 6 bultar/6 bolts+nuts