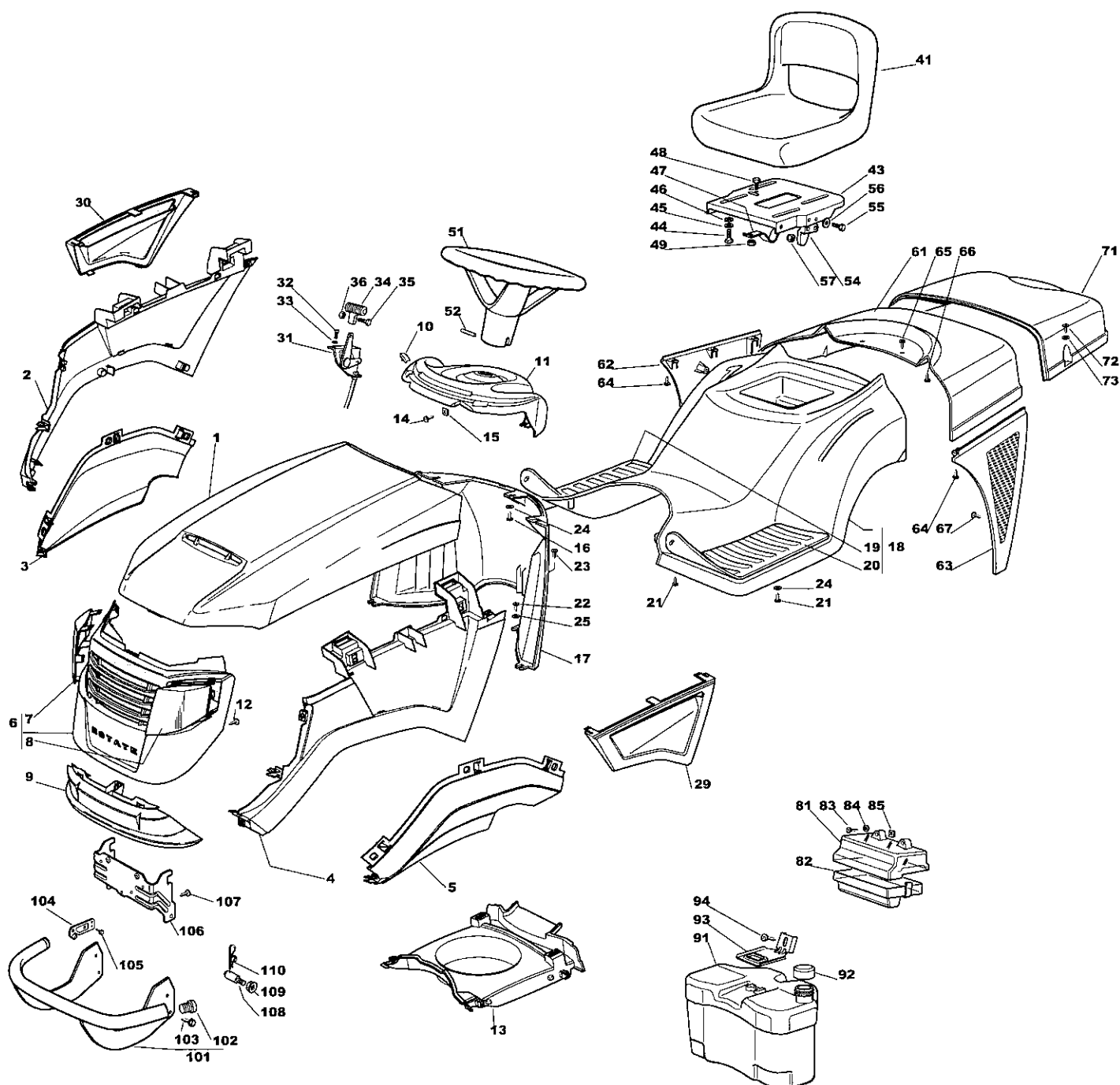


Genuine Spare Parts



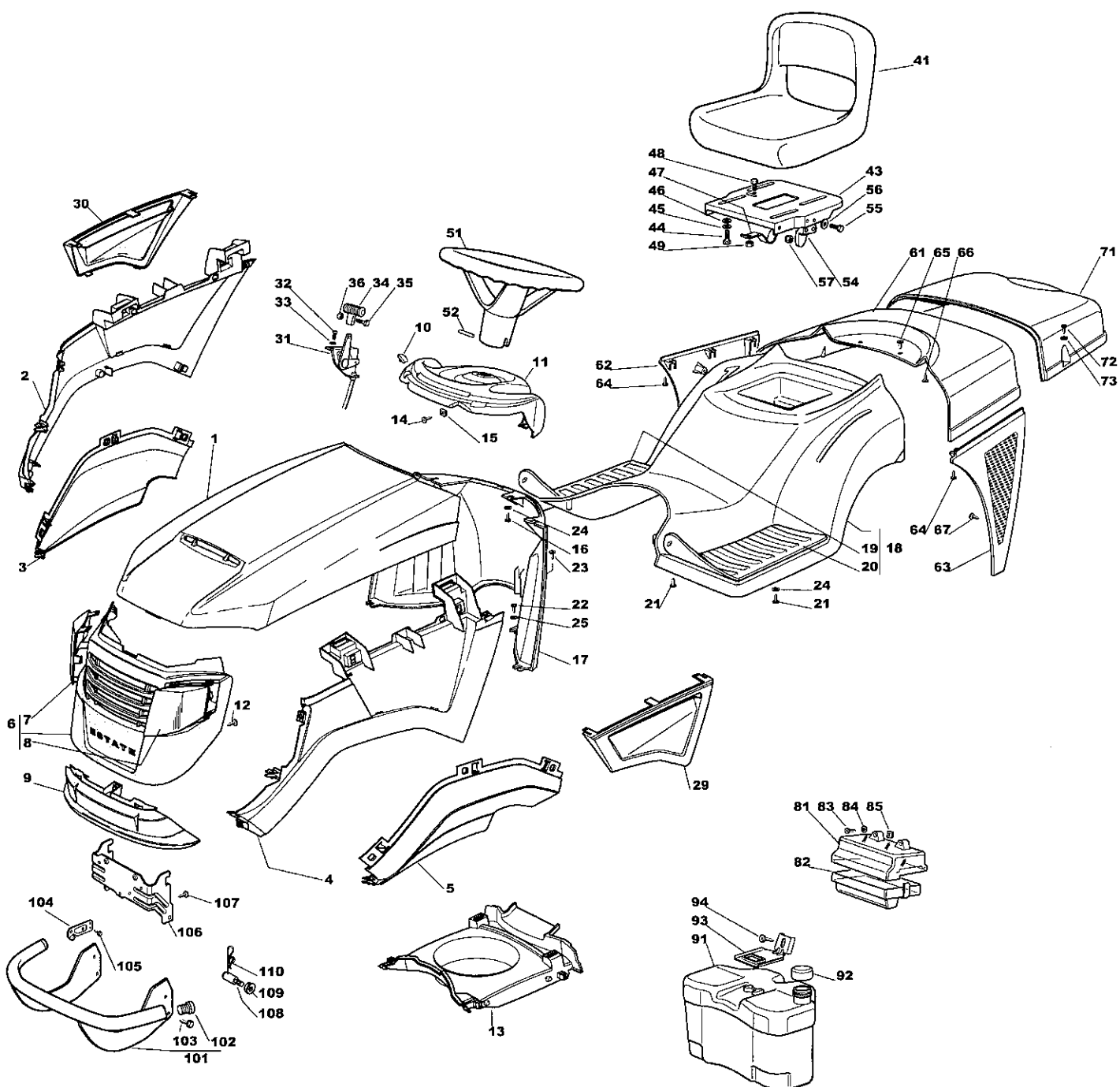


Utgåva Issue		Bildnr Picture No		ESTATE SENATOR ESTATE PRESIDENT KAROSS		ESTATE SENATOR ESTATE PRESIDENT BODY WORK		Sida Page
2006- 13		2077						92
Pos. Fig.	Antal/Quantity			Art nr Part No	Benämning	Description	Sats Kit	Anmärkning Notes
	2553	2556						
1	1	1		1136-2072-01	Motorhuv- övre, gul.....	Engine hood- upper, ye.....		Inkl. pos 7 - 8
2	1	1		1136-2101-01	Huv- övre hö, gul.....	Hood- upper RH, yellow.....		
3	1	1		1136-2106-01	Huv- undre hö, grå.....	Hood- lower RH, grey.....		
4	1	1		1136-2102-01	Huv- övre vä, gul.....	Hood- upper LH, yellow.....		
5	1	1		1136-2105-01	Huv- undre vä, grå.....	Hood- lower LH, grey.....		
6	1	1		1136-2176-01	Huv- främre, grå.....	Hood- front, grey.....		
7	1	1		1136-2124-01	• Skydd, hö.....	• Grill, RH.....		
8	1	1		1136-2125-01	• Skydd, vä.....	• Grill, LH.....		
9	1	1		1136-2071-01	Huv- främre undre, grå.....	Hood- front lower, gre.....		
10	2	2		1136-0179-01	Huvskydd.....	Grommet.....		
11	1	1		1136-0871-01	Instrumentbräda.....	Dashboard.....		Inkl. pos 19, 20 Inkl. pos 19, 20
12	6	6		1136-0816-01	Skruv.....	Screw.....		
13	1	1		1136-2075-01	Kåpa.....	Conveyor.....		
14	2	2		9848-8013-16	Skruv.....	Screw.....		
15	2	2		1136-0010-01	Låsplatta.....	Lock plate.....		
16	3	3		9836-9618-12	Skruv.....	Screw.....		
17	1	1		1136-0926-01	Stöd.....	Support.....		
18	1			1136-0475-01	Hjulååpa- gul.....	Wheel cover- yellow.....		
18		1		1136-0476-01	Hjulååpa.....	Wheel cover.....		
19	1	1		1136-0148-01	• Fotstegsskydd- hö.....	• Footboard cover- RH.....		
20	1	1		1136-0147-01	• Fotstegsskydd- vä.....	• Footboard cover- LH.....		
21	6	6		9836-9635-12	Skruv.....	Screw.....		13-2556-41 Honda
22	4	4		9836-9618-12	Skruv.....	Screw.....		
23	1	1		9836-9525-12	Skruv.....	Screw.....		
24	5	5		9699-0060-02	Planbricka.....	Flat washer.....		
25	4	4		9699-0085-02	Planbricka.....	Flat washer.....		
29	1	1		1136-2103-01	Kåpa, vä.....	Cover, LH.....		
30	1	1		1136-2104-01	Kåpa, hö.....	Cover, RH.....		
31	1	1		1136-0440-01	Gasreglage.....	Throttle control.....		
31		1		1136-2163-01	Gasreglage.....	Throttle control.....		
32	2	2		9997-0412-16	Skruv.....	Screw.....		
33	2	2		9683-0010-02	Bricka.....	Washer.....		
34	1	1		1136-0192-01	Knopp.....	Handle.....		
35	1	1		9865-0412-16	Skruv.....	Screw.....		
36	1	1		9799-0431-02	Mutter.....	Nut.....		
41	1	1		1136-0315-01	Sits.....	Seat.....		
43	1	1		1136-0252-01	Sitsplatta.....	Seat plate.....		
44	4	4		9997-0820-16	Skruv.....	Screw.....		
45	4	4		9683-0030-02	Låsbricka.....	Lock washer.....		
46	4	4		9699-0056-02	Planbricka.....	Flat washer.....		
47	1	1		1136-0891-01	Fjäder.....	Spring.....		
48	1	1		9997-0512-16	Skruv.....	Screw.....		
49	1	1		9747-0531-02	Mutter.....	Nut.....		
51	1	1		1136-0360-01	Ratt.....	Steering wheel.....		
52	1	1		9595-0272-00	Stift.....	Pin.....		
54	1	1		1136-0942-01	Kam.....	Cam.....		
55	2	2		1136-0820-01	Skruv.....	Screw.....		
56	2	2		9699-0018-02	Bricka.....	Washer.....		
57	2	2		9747-0531-02	Mutter.....	Nut.....		
61	1	1		1136-0143-01	Lock.....	Cover.....		
62	1	1		1136-0277-01	Skydd- hö.....	Guard- RH.....		
63	1	1		1136-0278-01	Skydd- vä.....	Guard- LH.....		
64	6	6		9836-9618-12	Skruv.....	Screw.....		
65	2	2		9847-8216-16	Skruv.....	Screw.....		
66	3	3		9836-9618-12	Skruv.....	Screw.....		
67	6	6		9836-9618-12	Skruv.....	Screw.....		
71	1	1		1136-0142-01	Uppsamlarlock.....	Grass catcher cover.....		
72	4	4		9847-8116-16	Skruv.....	Screw.....		
73	4	4		9699-0035-02	Planbricka.....	Flat washer.....		
81	1	1		1136-0275-01	Skydd- övre.....	Guard- upper.....		
82	1	1		1136-0276-01	Skydd- nedre.....	Guard- lower.....		
83	2	2		9847-8038-16	Skruv.....	Screw.....		
84	2	2		9699-0024-02	Planbricka.....	Flat washer.....		

Inkl. pos 7 - 8

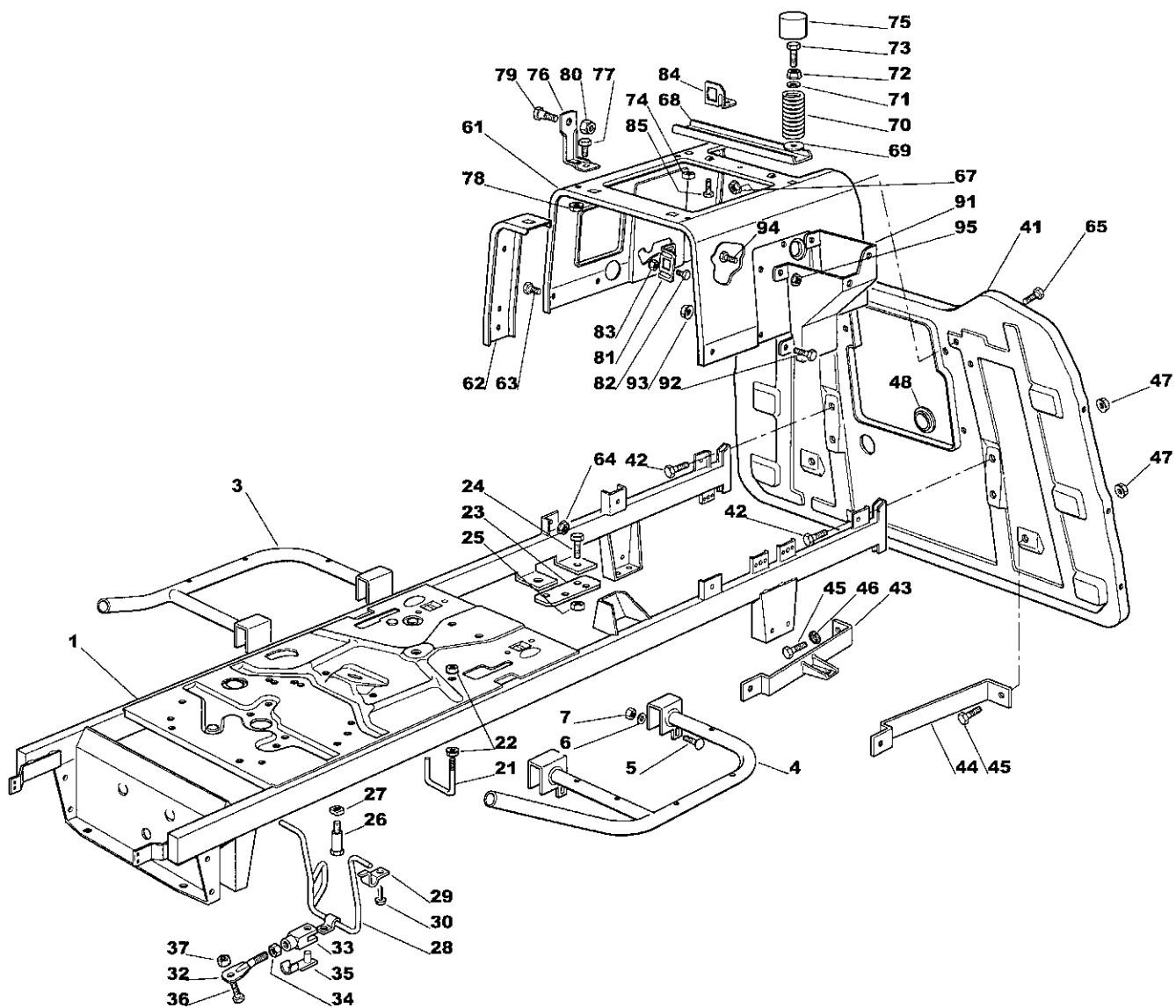
Inkl. pos 19, 20
Inkl. pos 19, 20

13-2556-41 Honda

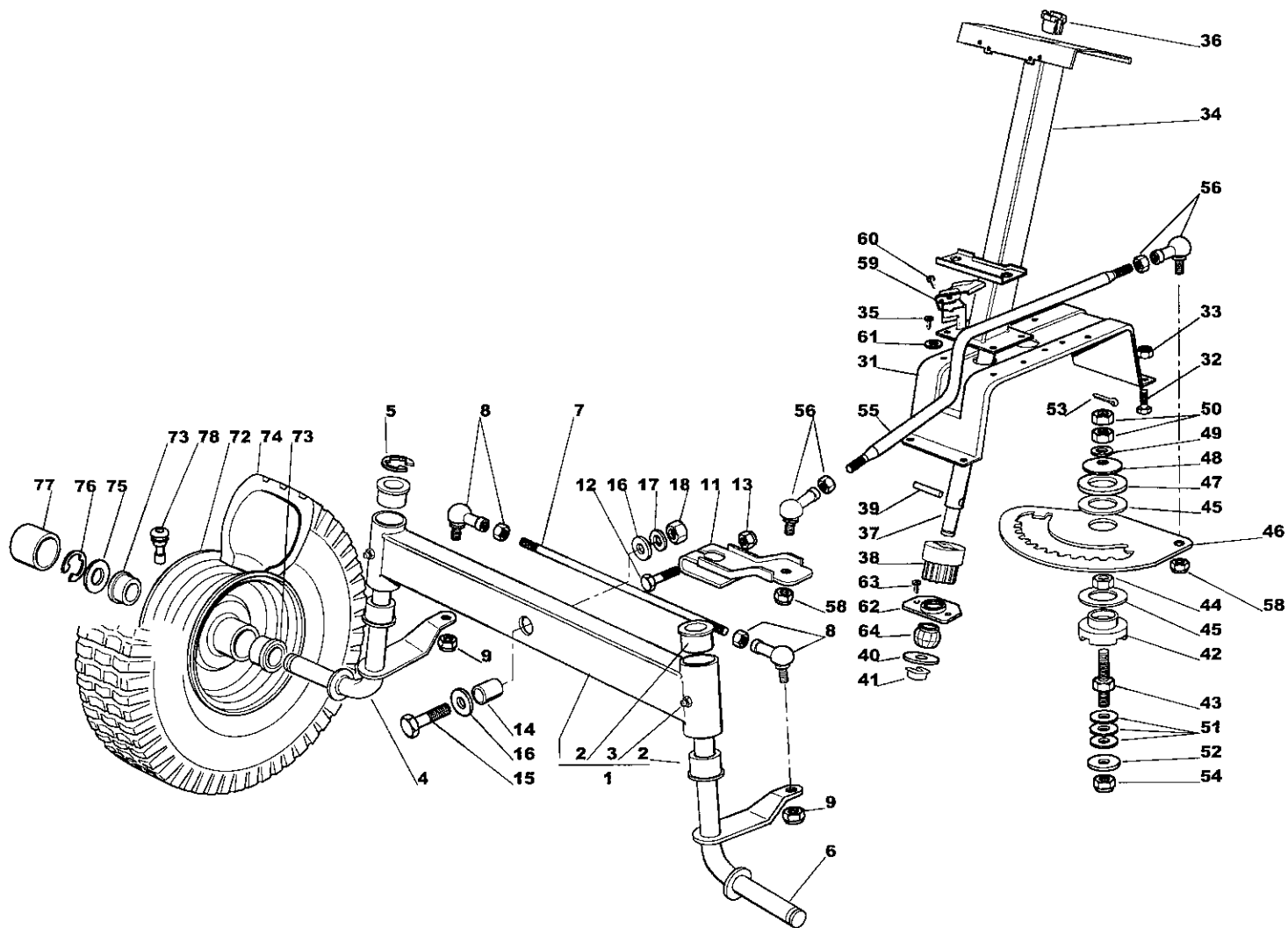


Utgåva Issue 2006- 13		Bildnr Picture No 2077		ESTATE SENATOR ESTATE PRESIDENT KAROSS		ESTATE SENATOR ESTATE PRESIDENT BODY WORK		Sida Page 94	
Pos. Fig.	Antal/Quantity				Art nr Part No	Benämning	Description	Sats Kit	Anmärkning Notes
	2553	2556							
85	2	2			1136- 0010- 01	Låsplatta	Lock plate		Inkl. pos 102
91	1	1			1136- 0318- 01	Bränsletank.....	Fuel tank		
92	1	1			1136- 0344- 01	Tanklock	Tank cap		
93	1	1			1136- 0327- 01	Tankfäste	Tank support		
94	1	1			9848- 8013- 16	Skruv	Screw		
101	1	1			1136- 2190- 01	Ljuddämparskydd	Muffler protection		
102	2	2			1136- 2063- 01	• Plugg	• Cap		
103	4	4			9847- 8216- 16	Skruv	Screw		
104	2	2			1136- 2130- 01	Huvfäste	Hood plate		
105	4	4			9847- 8009- 16	Skruv	Screw		
106	1	1			1136- 2142- 01	Huvstöd	Hood support		
107	5	5			1136- 0816- 01	Skruv	Screw		
108	2	2			1136- 2127- 01	Axel	Pin		
109	2	2			9739- 0831- 22	Mutter	Nut		
110	2	2			9598- 0002- 02	Låsnål	Pin lock		

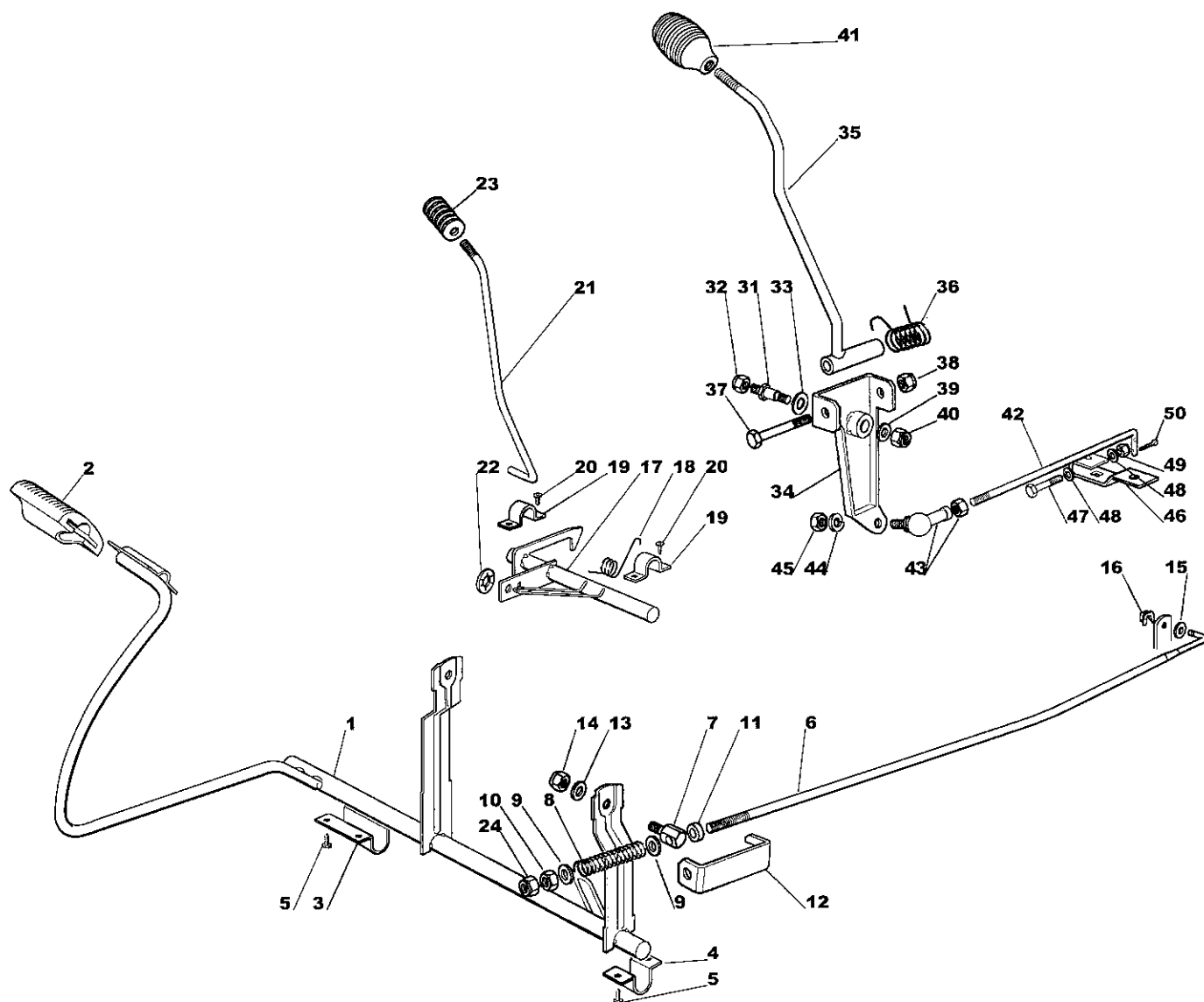
Utgåva Issue		Bildnr Picture No		ESTATE SENATOR ESTATE PRESIDENT DEKALER		ESTATE SENATOR ESTATE PRESIDENT LABELS		Sida Page
2006- 13		1208C						96
Pos. Fig.	Antal/Quantity			Art nr Part No	Benämning	Description	Sats Kit	Anmärkning Notes
	2553	2556						
1	1	1		1136-0025-01	Dekal	Label		Ø 55 mm 140 x 33 mm Ej ill/not ill. Ej ill/not ill. Ej ill/not ill.
2	1	1		1136-0026-01	Dekal	Label		
3	1	1		1136-0020-01	Dekal	Label		
5	1	1		1136-0031-01	Dekal	Label		
6	1			1136-0027-01	Dekal	Label		
7	1	1		1136-0028-01	Dekal	Label		
8	1	1		1136-0029-01	Dekal	Label		
9		1		1136-0030-01	Dekal	Label		
10	2	2		1136-0021-01	Dekal	Label		
12	1	1		1136-1217-01	Dekal	Label		
13	1	1		1136-1635-01	Dekal	Label		
99	1	1		1136-1451-01	Dekal "STIGA"	Label "STIGA"		
99	3	3		1136-1453-01	Dekal "STIGA"	Label "STIGA"		
99		2		1136-2196-01	Dekal "President K"	Label "President K"		
99	2			1136-2203-01	Dekal "Senator"	Label "Senator"		
99		2		1136-2205-01	Dekal "President H"	Label "President H"		



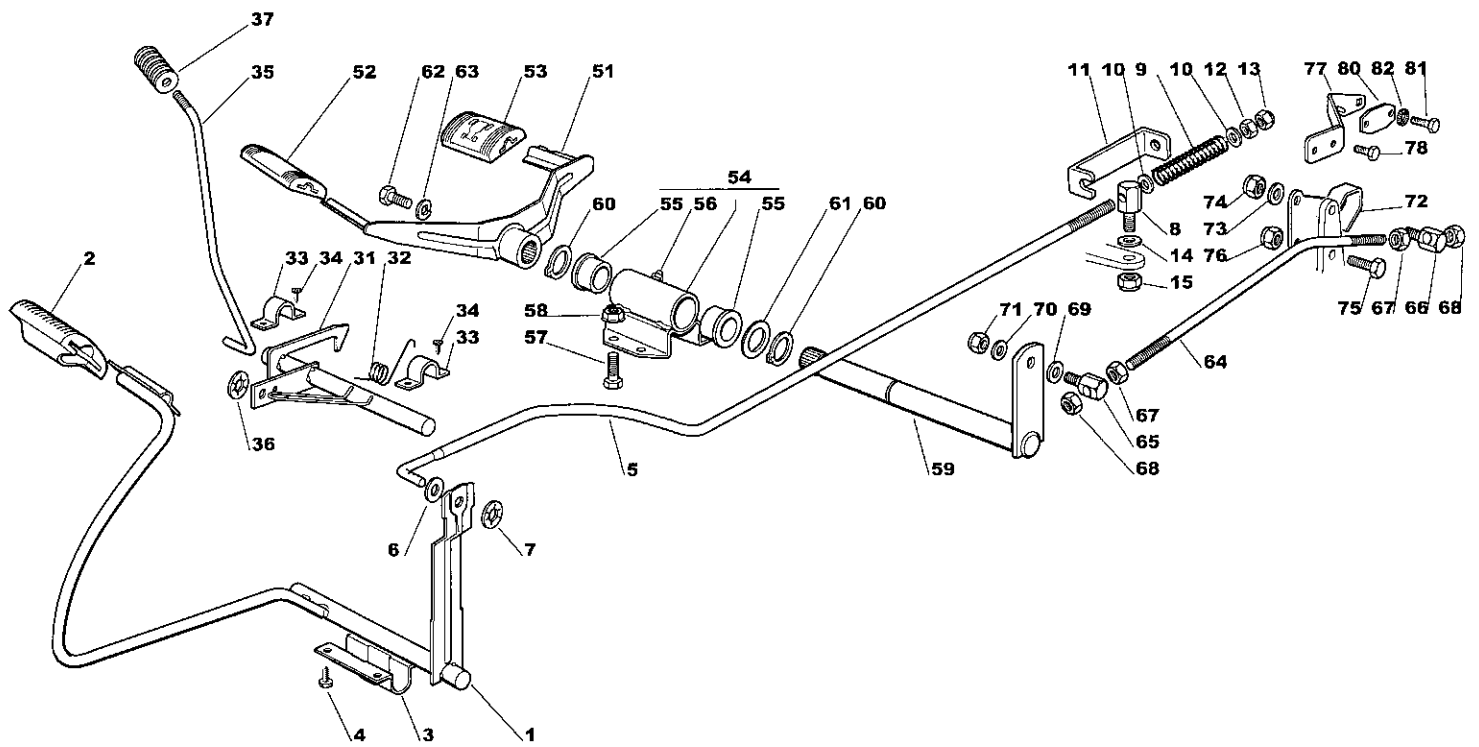
Utgåva Issue 2006-13		Bildnr Picture No 1211D		ESTATE SENATOR ESTATE PRESIDENT CHASSI		ESTATE SENATOR ESTATE PRESIDENT CHASSIS		Sida Page 98	
Pos. Fig.	Antal/Quantity			Art nr Part No	Benämning	Description	Sats Kit	Anmärkning Notes	
	2553	2556							
1	1	1		1136-1499-01	Ram.....	Frame.....			
3	1	1		1136-0548-01	Fotstegsstöd- hö.....	Footboard support- RH.....			
4	1	1		1136-0549-01	Fotstegsstöd- vä.....	Footboard support- LH.....			
5	4	4		9898-0645-12	Skruv.....	Screw.....			
6	4	4		9699-0060-02	Planbricka.....	Flat washer.....			
7	4	4		9747-0631-02	Låsmutter.....	Lock nut.....			
21		1		1136-0267-01	Remstyrning.....	Belt guide.....			
22		2		9739-0631-22	Mutter.....	Nut.....			
23		2		1136-0261-01	Platta.....	Plate.....			
24		2		9997-0820-16	Skruv.....	Screw.....			
25		2		9747-0831-02	Mutter.....	Lock nut.....			
26	2			1136-0907-01	Remstyrning.....	Belt guide.....			
27	2			1136-0004-01	Fyrkantmutter.....	Square nut.....			
28	1	1		1136-1784-01	Remstyrning.....	Belt guide.....			
29	2	2		1136-1247-01	Platta.....	Plate.....			
30	2	2		9847-8216-16	Skruv.....	Screw.....			
32	1	1		1136-1281-01	Justerstång.....	Tie rod.....			
33	1	1		1136-0047-01	Gaffel.....	Fork.....			
34	1	1		9799-0631-02	Mutter.....	Nut.....			
35	1	1		1136-0042-01	Låsbult.....	Clip bolt.....			
36	1	1		9997-0820-16	Skruv.....	Screw.....			
37	1	1		9739-0831-22	Mutter.....	Nut.....			
41	1	1		1136-0515-01	Plåt- bak.....	Plate- rear.....			
42	2	2		9997-0816-16	Skruv.....	Screw.....			
43	1	1		1136-0525-01	Förstärkningsstag- hö.....	Reinforcement plate- R.....			
44	1	1		1136-0300-01	Förstärkningsstag- vä.....	Reinforcement plate- L.....			
45	4	4		9997-0816-16	Skruv.....	Screw.....			
46	1	1		9677-0009-02	Låsbricka.....	Lock washer.....			
47	6	6		9739-0831-22	Mutter.....	Nut.....			
48	1	1		1136-0082-01	Lock.....	Cap.....			
61	1	1		1136-0337-01	Sitsfäste.....	Seat support.....			
62	2	2		1136-0301-01	Förstärkningsstag.....	Reinforcement plate.....			
63	4	4		9997-0614-16	Skruv.....	Screw.....			
64	4	4		9739-0631-22	Mutter.....	Nut.....			
65	4	4		9997-0614-16	Skruv.....	Screw.....			
67	4	4		9739-0631-22	Mutter.....	Nut.....			
68	1	1		1136-0302-01	Förstärkningsstag.....	Reinforcement plate.....			
69	2	2		9699-0056-02	Planbricka.....	Flat washer.....			
70	2	2		1136-0202-02	Fjäder.....	Spring.....			
71	2	2		9699-0090-02	Planbricka.....	Flat washer.....			
72	2	2		9739-0831-22	Mutter.....	Nut.....			
73	2	2		1136-0358-01	Skruv.....	Screw.....			
74	2	2		1136-0003-01	Fyrkantmutter.....	Square nut.....			
75	2	2		1136-0156-01	Lock.....	Cap.....			
76	2	2		1136-0321-01	Vinkelfäste.....	Bracket.....			
77	2	2		9997-0816-16	Skruv.....	Screw.....			
78	2	2		9739-0831-22	Mutter.....	Nut.....			
79	2	2		1136-0086-01	Bult.....	Bolt.....			
80	2	2		9712-0831-02	Låsmutter.....	Lock nut.....			
81	1	1		1136-0322-01	Vinkelfäste.....	Bracket.....			
82	2	2		9997-0512-16	Skruv.....	Screw.....			
83	2	2		9747-0531-02	Mutter.....	Nut.....			
84	1	1		1136-0925-01	Vinkelfäste.....	Angle bracket.....			
85	2	2		9847-8009-16	Skruv.....	Screw.....			
91	1	1		1136-0333-01	Stöd.....	Support.....			
92	2	2		9997-0614-16	Skruv.....	Screw.....			
93	2	2		9739-0631-22	Mutter.....	Nut.....			
94	2	2		9997-0614-16	Skruv.....	Screw.....			
95	2	2		9739-0631-22	Mutter.....	Nut.....			



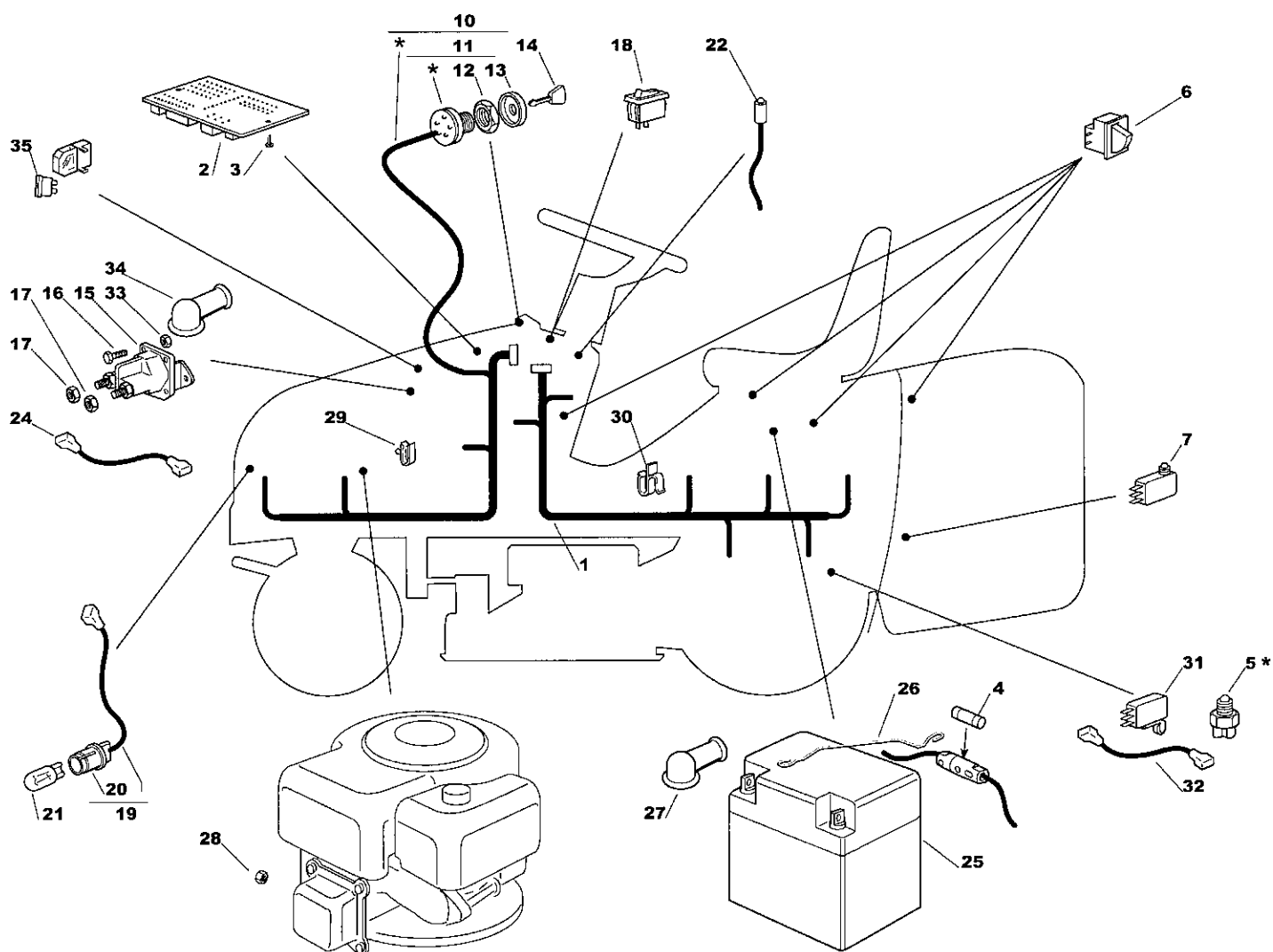
Utgåva Issue 2006- 13		Bildnr Picture No 1213C		ESTATE SENATOR ESTATE PRESIDENT STYRNING		ESTATE SENATOR ESTATE PRESIDENT STEERING		Sida Page 100
Pos. Fig.	Antal/Quantity			Art nr Part No	Benämning	Description	Sats Kit	Anmärkning Notes
	2553	2556						
1	1	1		1136-0466-01	Framaxel kpl	Front wheel axle assy		Inkl. pos 2 - 3
2	4	4		1136-0121-01	• Bussning.....	• Bushing		
3	2	2		9501-0500-00	• Smörjnippel	• Grease joint		
4	1	1		1136-0485-01	Hjulspindel- hö.....	Stub axle- RH		
5	1	1		9652-0015-04	Låsring	Retaining ring		
6	1	1		1136-0486-01	Hjulspindel- vä	Stub axle- LH		
7	1	1		1136-0349-01	Parallellstag	Tie rod.....		
8	2	2		1136-0092-01	Kulled	Ball joint.....		
9	2	2		9747-1031-02	Låsmutter	Lock nut.....		
11	1	1		1136-0188-01	Styrarm	Steering arm		
12	1	1		9997-1055-12	Skruv	Screw		
13	1	1		9747-1031-02	Låsmutter	Lock nut.....		
14	1	1		1136-0165-01	Distans	Spacer.....		
15	1	1		9997-1260-02	Skruv	Screw		
16	2	2		1136-0016-01	Bricka	Washer.....		
17	1	1		9683-0055-02	Låsbricka	Lock washer.....		
18	1	1		9799-1231-02	Mutter	Nut		
31	1	1		1136-0335-01	Stöd	Support.....		
32	4	4		9997-0816-16	Skruv	Screw		
33	4	4		9747-0831-02	Mutter	Lock nut.....		
34	1	1		1136-1496-01	Fäste	Support.....		
35	4	4		9847-8216-16	Skruv	Screw		
36	1	1		1136-1469-01	Bussning	Bushing		
37	1	1		1136-1471-01	Rattstång	Steering column.....		
38	1	1		1136-0263-02	Styrdrev	Steering pinion.....		
39	1	1		9595-0262-00	Spännstift	Locating pin		
40	1	1		9699-0037-02	Bricka	Washer.....		
41	1	1		1136-0008-01	Låsplatta	Lock plate		
42	1	1		1136-0128-01	Bussning	Bushing.....		
43	1	1		1136-0246-01	Pinnbult	Stud bolt		
44	1	1		9799-1031-02	Mutter	Nut		
45	2	2		1136-0310-01	Bricka	Washer.....		
46	1	1		1136-0320-01	Styrsektor	Steering sector.....		
47	1	1		1136-0311-01	Bricka	Washer.....		
48	1	1		1136-0083-01	Fjäderbricka	Elastic washer		
49	1	1		9699-0035-02	Planbricka	Flat washer.....		
50	2	2		9799-1031-02	Mutter	Nut		
51	3	3		1136-0087-01	Bricka	Washer.....		
52	1	1		1136-0015-01	Bricka	Washer.....		
53	1	1		9599-0070-02	Saxsprint	Split pin.....		
54	1	1		9747-1031-02	Låsmutter	Lock nut.....		
55	1	1		1136-0111-01	Styrstag	Steering rod.....		
56	2	2		1136-0092-01	Kulled	Ball joint.....		
58	2	2		9747-1031-02	Låsmutter	Lock nut.....		
59		1		1136-0279-01	Brytarskydd	Micro protection		
60		2		9847-7813-16	Skruv	Screw.....		
61	2	2		9699-0035-02	Planbricka.....	Flat washer.....		
62	1	1		1136-1477-01	Stöd	Support.....		
63	2	2		9847-8116-16	Skruv	Screw.....		
64	1	1		1136-1473-01	Länk.....	Joint.....		
72	2	2		1136-0454-01	Fälg.....	Rim.....		
73	4	4		1136-0157-01	Lager	Bearing.....		
74	2	2		1136-2133-01	Däck (Kenda).....	Tire (Kenda)		
75	2	2		1136-0305-01	Bricka	Washer.....		
76	2	2		9652-0015-04	Låsring	Retaining ring		
77	2	2		1136-0081-01	Navkapsel	Hub cap.....		
78	2	2		9545-0500-00	Ventil	Valve		



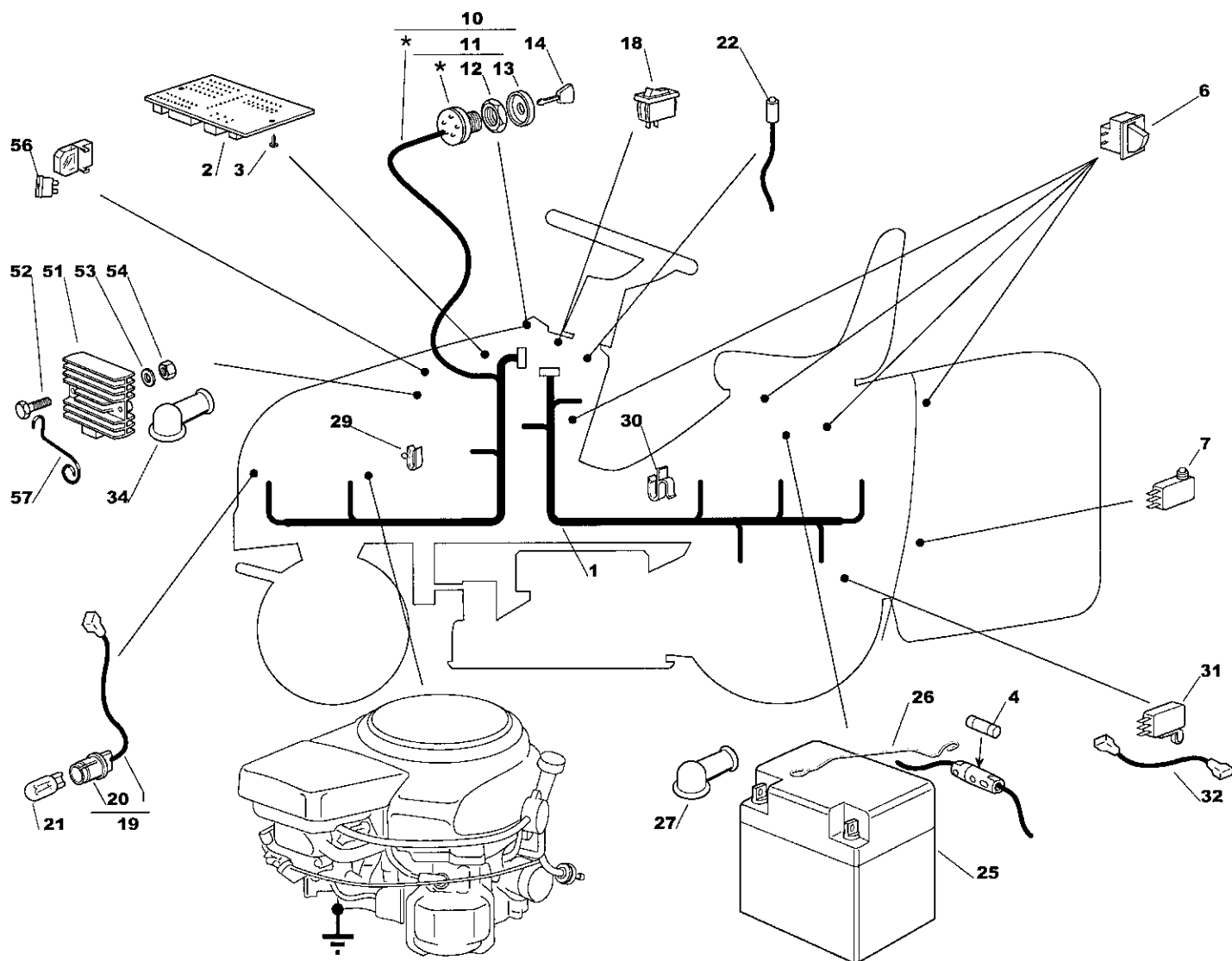
Utgåva Issue 2006- 13		Bildnr Picture No 1214A		ESTATE SENATOR BROMSREGLAGE VÄXELREGLAGE		ESTATE SENATOR BRAKE CONTROL GEAR SHIFTER CONTROL		Sida Page 102	
Pos. Fig.	Antal/Quantity				Art nr Part No	Benämning	Description	Sats Kit	Anmärkning Notes
	2553								
1	1				1136-0506-01	Bromspedal	Brake pedal		
2	1				1136-0152-01	Pedalskydd	Pedal cover		
3	1				1136-0254-01	Bygel	Clamp		
4	1				1136-0255-01	Bygel	Clamp		
5	6				9847-8016-16	Skruv	Screw		
6	1				1136-0116-01	Bromsstång	Brake rod		
7	1				1136-0244-01	Ledbult	Pivot bolt		
8	1				1136-0218-01	Fjäder	Spring		
9	2				9699-0035-02	Planbricka	Flat washer		
10	1				9799-1031-02	Mutter	Nut		
11	1				1136-0172-01	Distans	Spacer		
12	1				1136-0329-01	Bygel	Clamp		
13	1				9699-0060-02	Planbricka	Flat washer		
14	1				9747-0631-02	Låsmutter	Lock nut		
15	1				9699-0090-02	Planbricka	Flat washer		
16	1				1136-0009-01	Låsplatta	Lock plate		
17	1				1136-0441-01	Spärraxel	Axle		
18	1				1136-0217-01	Fjäder	Spring		
19	2				1136-0256-01	Bygel	Plate		
20	4				9847-8016-16	Skruv	Screw		
21	1				1136-0119-01	P- bromsarm	P- brake lever		
22	1				9675-0011-00	Starlock	Starlock		
23	1				1136-0392-01	Knopp	Knob		
24	1				9747-1031-02	Låsmutter	Lock nut		
31	1				1136-0233-01	Pinnbult	Stud bolt		
32	1				9712-0831-02	Låsmutter	Lock nut		
33	1				1136-0088-01	Bricka	Washer		
34	1				1136-0529-01	Spakhållare	Gear lever bracket		
35	1				1136-0490-01	Växelspak	Gear lever		
36	1				1136-0212-01	Fjäder	Spring		
37	1				9997-0880-16	Skruv	Screw		
38	1				9747-0831-02	Mutter	Lock nut		
39	1				9699-0056-02	Planbricka	Flat washer		
40	1				9712-0831-02	Låsmutter	Lock nut		
41	1				1136-0197-01	Handtag	Knob		
42	1				1136-0107-01	Växelstag	Shifter rod		
43	1				1136-0093-01	Kulled	Ball joint		
44	1				9683-0030-02	Låsbricka	Lock washer		
45	1				9799-0831-02	Mutter	Nut		
46	1				1136-0187-01	Växelarm	Gearshift arm		
47	1				9997-0640-12	Skruv	Screw		
48	2				9699-0035-02	Planbricka	Flat washer		
49	1				9747-0631-02	Låsmutter	Lock nut		
50	1				9599-0070-02	Saxsprint	Split pin		



Utgåva Issue		Bildnr Picture No		ESTATE PRESIDENT BROMSREGLAGE DRIVREGLAGE		ESTATE PRESIDENT BRAKE CONTROL DRIVE CONTROL		Sida Page
2006- 13		1215B						104
Pos. Fig.	Antal/Quantity			Art nr Part No	Benämning	Description	Sats Kit	Anmärkning Notes
	2556							
1	1			1136-0510-01	Pedal	Pedal		
2	1			1136-0151-01	Pedalskydd	Pedal cover		
3	1			1136-0254-01	Bygel	Clamp		
4	4			9847-8016-16	Skruv	Screw		
5	1			1136-0117-01	Bromsstång	Brake rod		
6	1			9699-0090-02	Planbricka	Flat washer		
7	1			9675-0012-02	Starlock	Locking washer		
8	1			1136-0248-01	Ledbult	Pivot bolt		
9	1			1136-0218-01	Fjäder	Spring		
10	2			9699-0035-02	Planbricka	Flat washer		
11	1			1136-0329-01	Bygel	Clamp		
12	1			9799-1031-02	Mutter	Nut		
13	1			9747-1031-02	Låsmutter	Lock nut		
14	1			9699-0090-02	Planbricka	Flat washer		
15	1			9747-0831-02	Mutter	Lock nut		
31	1			1136-0441-01	Spärraxel	Axle		
32	1			1136-0217-01	Fjäder	Spring		
33	2			1136-0256-01	Bygel	Plate		
34	4			9847-8016-16	Skruv	Screw		
35	1			1136-0119-01	P- bromsarm	P- brake lever		
36	1			9675-0011-00	Starlock	Starlock		
37	1			1136-0392-01	Knopp	Knob		
51	1			1136-0507-01	Drivpedal	Drive pedal		
52	1			1136-0149-01	Pedalskydd- fram	Pedal cover- front		
53	1			1136-0150-01	Pedalskydd- bak	Pedal cover- rear		
54	1			1136-1495-01	Fäste kpl	Support assy		Inkl. pos 55 - 56
55	2			1136-0121-01	• Bussning	• Bushing		
56	1			9501-0500-00	• Smörjnippel	• Grease joint		
57	2			9997-0616-16	Skruv	Screw		
58	2			9739-0631-22	Mutter	Nut		
59	1			1136-0500-01	Pedalaxel	Pedal axle		
60	2			9650-0020-04	Spårring	Circlip		
61	1			1136-0090-01	Bricka	Washer		
62	1			9997-0816-16	Skruv	Screw		
63	1			9683-0030-02	Låsbricka	Lock washer		
64	1			1136-0118-01	Stag	Drive rod		
65	1			1136-0241-01	Ledbult	Pivot bolt		
66	1			1136-0247-01	Ledbult	Pivot bolt		
67	2			9799-0831-02	Mutter	Nut		
68	2			9747-0831-02	Mutter	Lock nut		
69	1			9699-0035-02	Planbricka	Flat washer		
70	1			9699-0060-02	Planbricka	Flat washer		
71	1			9747-0631-02	Låsmutter	Lock nut		
72	1			1136-0533-01	Fäste	Support		
73	1			9699-0060-02	Planbricka	Flat washer		
74	1			9747-0631-02	Låsmutter	Lock nut		
75	1			9997-0620-16	Skruv	Screw		
76	1			9747-0631-02	Låsmutter	Lock nut		
77	1			1136-0330-01	Bygel	Clamp		
78	2			9848-8013-16	Skruv	Screw		
80	1			1136-0407-01	Plåt	Plate		
81	2			1136-1214-01	Skruv	Screw		
82	2			1136-0610-01	Bricka	Washer		



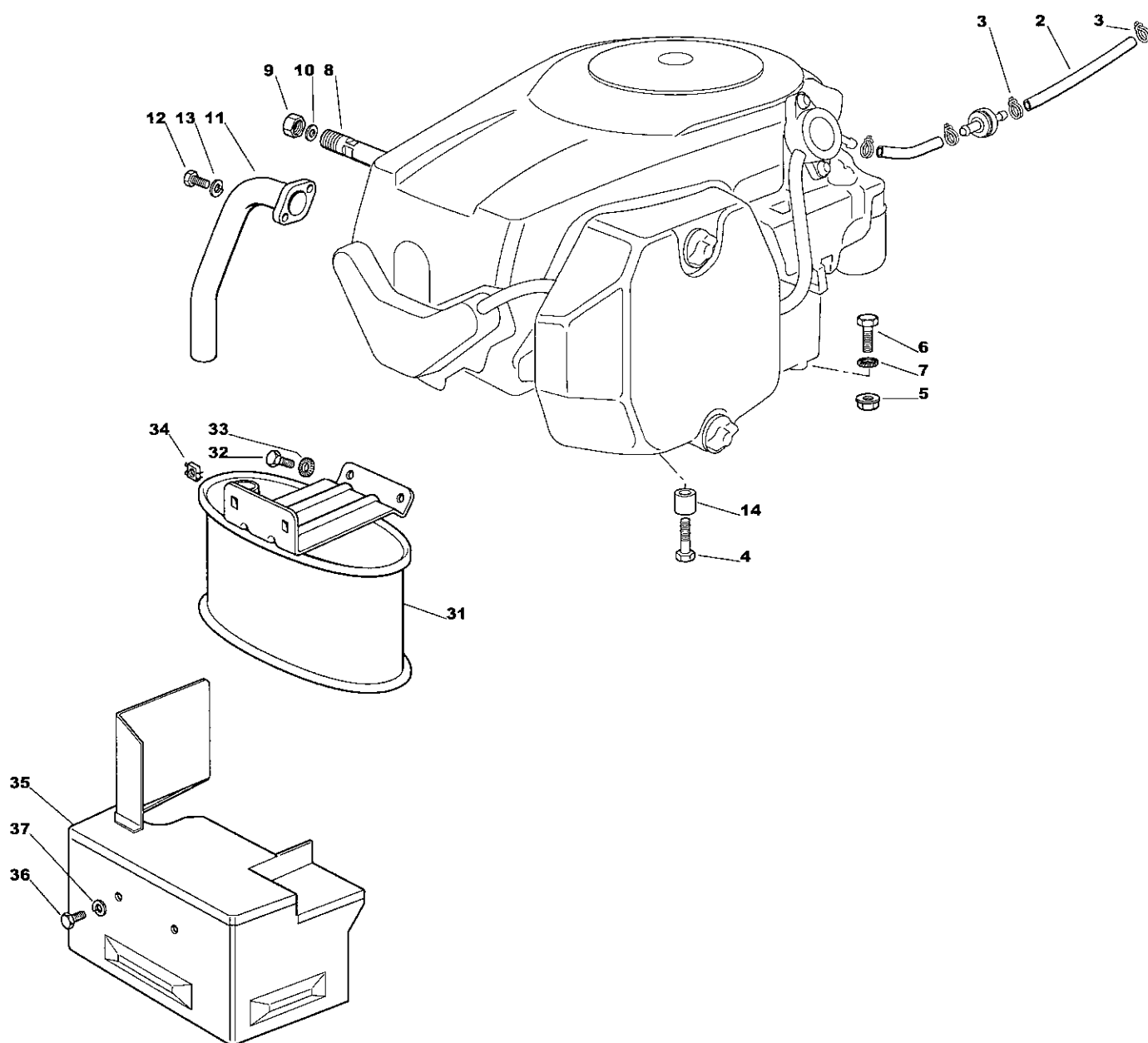
Utgåva Issue		Bildnr Picture No		ESTATE SENATOR ESTATE PRESIDENT ELUTRUSTNING (B&S, Kohler)		ESTATE SENATOR ESTATE PRESIDENT EL. EQUIPMENT (B&S, Kohler)		Sida Page
2006- 13		2078						106
Pos. Fig.	Antal/Quantity			Art nr Part No	Benämning	Description	Sats Kit	Anmärkning Notes
	2553	2556 -11						
1	1	1		1136-2171-01	Kabelhärva.....	Cable harness		6.3 A Växellåda/gearbox
2	1	1		1136-0314-01	Elektronikkort	Electronic card		
3	2	2		9847-7813-16	Skruv	Screw		
4	1	1		1136-0428-01	Säkring.....	Fuse		
5	1			786194	Brytare.....	Neutral start switch		
6	4	4		1136-0073-01	Mikrobrytare.....	Micro switch		
7	1	1		1136-0072-01	Mikrobrytare.....	Micro switch		
10	1	1		1136-2169-01	Kabelhärva.....	Cable harness		
11	1	1		1136-0056-01	• Tändningslås	• Ignition switch		
12	1	1		1136-0049-01	•• Mutter	•• Nut		
13	1	1		1134-4097-01	•• Täckkåpa.....	•• Cap		
14	1	1		1136-2028-01	Tändningsnyckel.....	Ignition key		
15	1	1		1136-0065-01	Startrelä	Solenoid		
16	2	2		9997-0620-16	Skruv	Screw		
17	2	2		9794-5131-02	Mutter.....	Nut		
18	1	1		1136-0055-01	Brytare.....	Switch.....		
19	1	1		1136-0468-01	Kabel	Cable		
20	2	2		1136-0429-01	• Lamphållare	• Lamp holder		
21	2	2		1136-0058-01	Glödlampa	Bulb		
22	1	1		1136-0135-01	Kabel	Cable		
24	1	1		1136-0136-01	Kabel	Cable		
25	1	1		1134-4804-01	Batteri	Battery		
26	1	1		1136-0215-01	Fjäder.....	Spring		
27	1	1		1136-0059-01	Polskydd.....	Protection		
28	1	1		9795-3531-02	Mutter.....	Nut		
29	4	4		1136-0427-01	Kabelhållare	Cable holder		
30	1	1		1136-0426-01	Kabelhållare	Cable holder		
31		1		1136-0076-01	Mikrobrytare.....	Micro switch		
32		1		1136-0865-01	Kabel	Cable		
33	2	2		9739-0631-22	Mutter.....	Nut		
34	1	1		1136-0060-01	Polskydd.....	Protection		
35	1	1		1136-2161-01	Säkring.....	Fuse		
								25 A



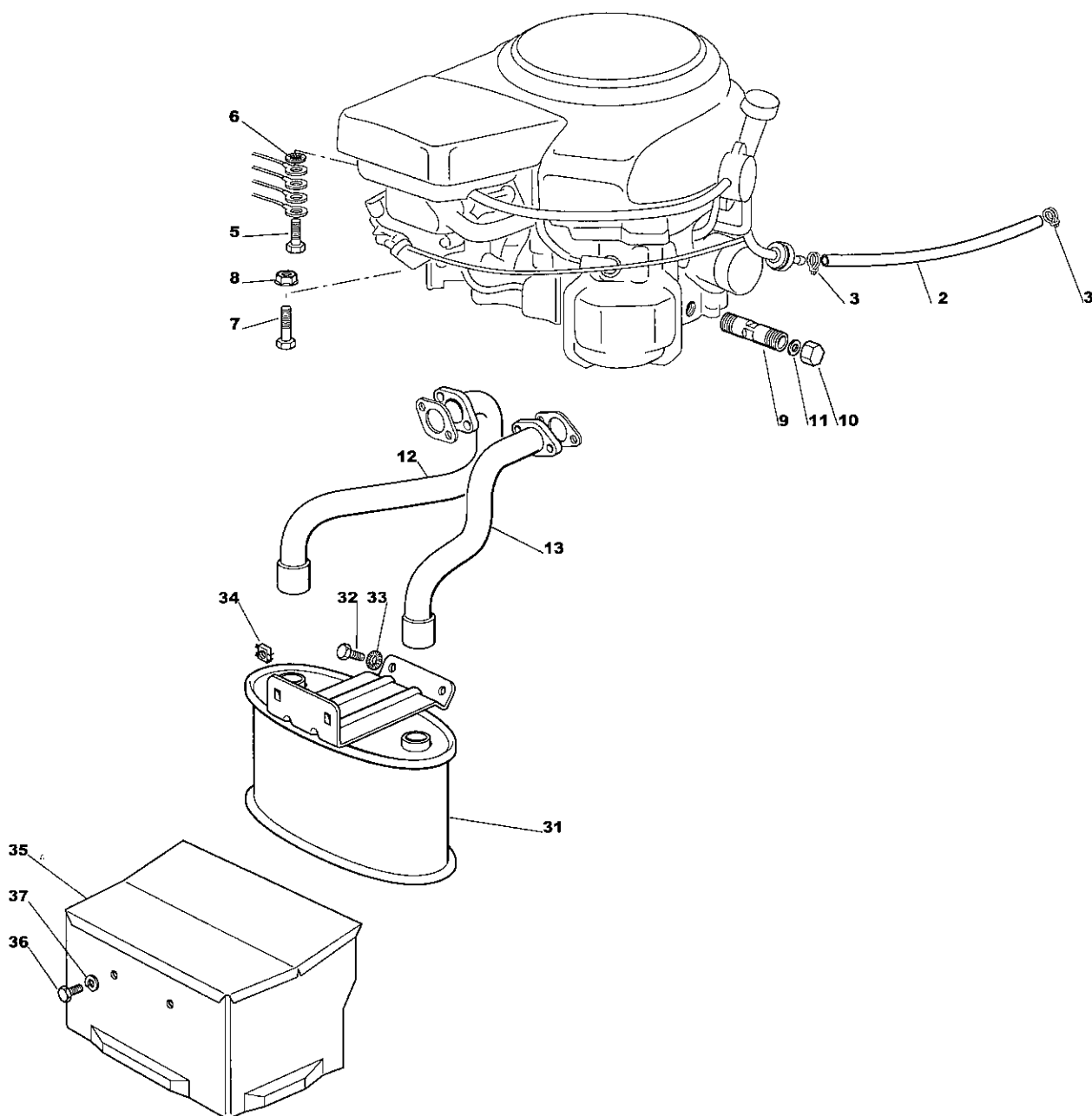
Utgåva Issue 2006- 13		Bildnr Picture No 2079		ESTATE PRESIDENT ELUTRUSTNING (Honda)		ESTATE PRESIDENT EL. EQUIPMENT (Honda)		Sida Page 108	
Pos. Fig.	Antal/Quantity				Art nr Part No	Benämning	Description	Sats Kit	Anmärkning Notes
	2556 -41								
1	1				1136-2168-01	Kabelhärva.....	Cable harness		6.3 A Full upps./grass bag Inkl. pos 11 Inkl. pos 12 - 13
2	1				1136-0314-01	Elektronikkort	Electronic card		
3	2				9847-7813-16	Skruv	Screw		
4	1				1136-0428-01	Säkring	Fuse		
6	4				1136-0073-01	Mikrobrytare.....	Micro switch		
7	1				1136-0072-01	Mikrobrytare.....	Micro switch		
10	1				1136-2167-01	Kabelhärva.....	Cable harness		
11	1				1136-0056-01	• Tändningslås	• Ignition switch		
12	1				1136-0049-01	• Mutter.....	• Nut		
13	1				1134-4097-01	• Täckkåpa.....	• Cap		
14	1				1136-2028-01	Tändningsnyckel.....	Ignition key		Strålkastare/light Inkl. pos 20



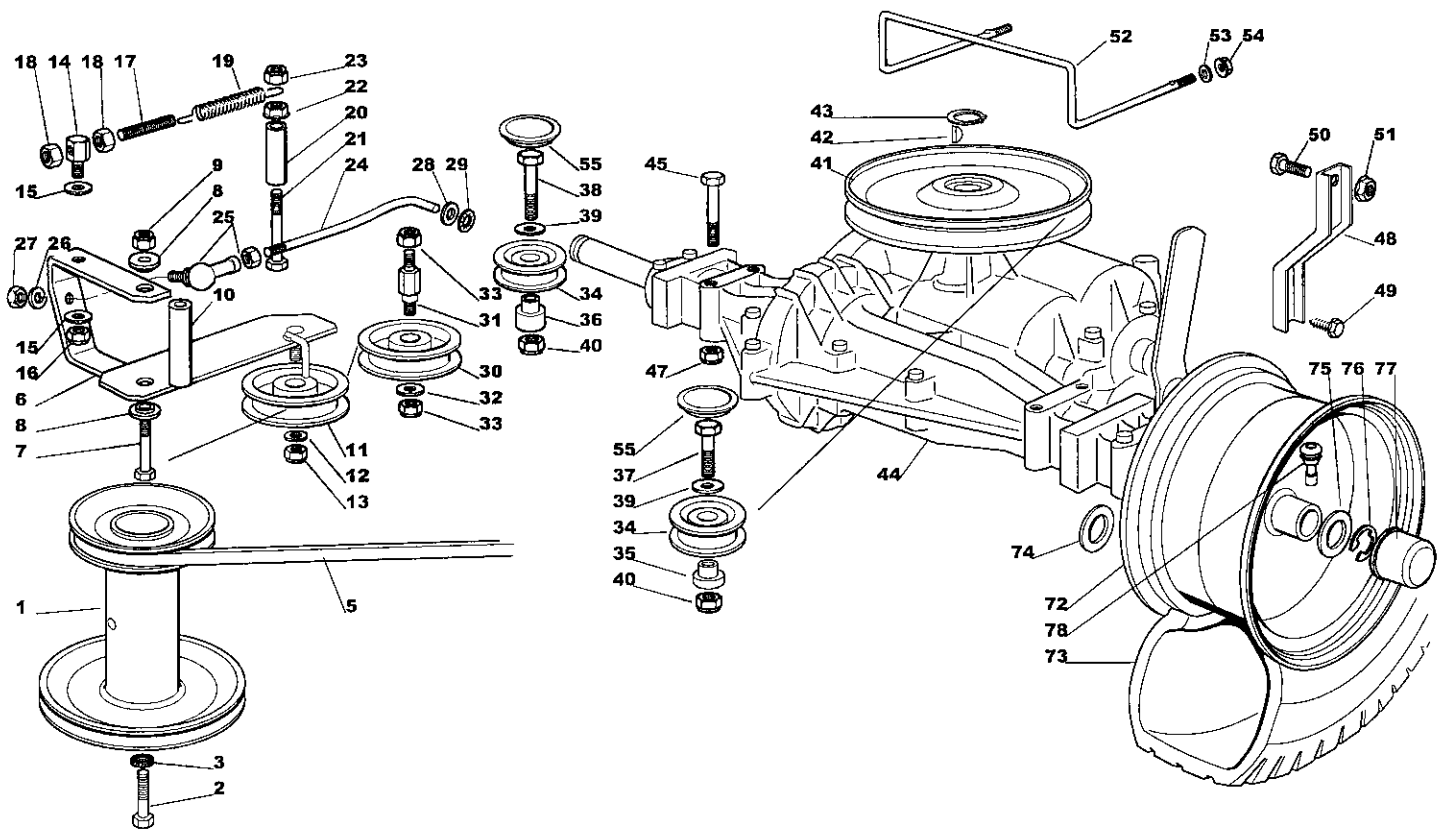
Utgåva Issue 2006- 13		Bildnr Picture No 1701A		ESTATE SENATOR MOTOR (B&S 21A907)		ESTATE SENATOR ENGINE (B&S 21A907)		Sida Page 110	
Pos. Fig.	Antal/Quantity				Art nr Part No	Benämning	Description	Sats Kit	Anmärkning Notes
	2553								
2	1				1136- 1790- 01	Bränsleslang.....	Fuel hose.....		L = 40 mm
3	4				1136- 0045- 01	Slangklämma.....	Hose clamp.....		
4	1				1136- 1467- 01	Avgasrör.....	Exhaust tube.....		
5	2				9683- 0030- 02	Låsbricka.....	Lock washer.....		
6	2				9988- 3619- 16	Skruv.....	Screw.....		
7	1				9997- 0840- 16	Skruv.....	Screw.....		
8	1				9677- 0009- 02	Låsbricka.....	Lock washer.....		
9	1				9739- 0831- 22	Mutter.....	Nut.....		
10	1				1136- 0273- 01	Oljeavtappningsrör.....	Oil drain tube.....		
11	1				1136- 0066- 01	Oljeavtappningsplugg.....	Oil drain plug.....		
12	1				1136- 0054- 01	Tätningring.....	Oil seal.....		
13	1				1136- 0353- 01	Bränsleslang.....	Fuel hose.....		
14	2				9997- 0820- 16	Skruv.....	Screw.....		
15	2				9677- 0009- 02	Låsbricka.....	Lock washer.....		
16	1				1136- 1054- 01	Ljuddämpare.....	Muffler.....		
17	2				1136- 0004- 01	Fyrkantmutter.....	Square nut.....		
18	1				1136- 1048- 01	Skydd.....	Guard.....		
19	2				9997- 0816- 16	Skruv.....	Screw.....		
20	2				9683- 0030- 02	Låsbricka.....	Lock washer.....		
24	3				9739- 0831- 22	Mutter.....	Nut.....		
25	3				9997- 0835- 12	Skruv.....	Screw.....		
									L = 35 mm



Utgåva Issue 2006- 13		Bildnr Picture No 1863A		ESTATE PRESIDENT MOTOR (Kohler)		ESTATE PRESIDENT ENGINE (Kohler)		Sida Page 112	
Pos. Fig.	Antal/Quantity				Art nr Part No	Benämning	Description	Sats Kit	Anmärkning Notes
	2556 -11								
2	1				1136- 0354- 01	Bränsleslang.....	Fuel hose.....		
3	2				1136- 0045- 01	Slangklämma.....	Hose clamp.....		
4	3				1136- 2051- 01	Skruv.....	Screw.....		
5	1				9739- 0831- 22	Mutter.....	Nut.....		
6	1				9997- 0840- 16	Skruv.....	Screw.....		
7	1				9677- 0009- 02	Låsbricka.....	Lock washer.....		
8	1				1136- 0413- 01	Oljeavtappningsrör.....	Oil drain pipe.....		
9	1				1136- 0066- 01	Oljeavtappningsplugg.....	Oil drain plug.....		
10	1				1136- 0054- 01	Tätningsring.....	Oil seal.....		
11	1				1136- 1780- 01	Avgasrör.....	Exhaust tube.....		
12	2				9988- 3619- 16	Skruv.....	Screw.....		
13	2				9683- 0030- 02	Låsbricka.....	Lock washer.....		
14	3				1136- 2097- 01	Distans.....	Spacer.....		
31	1				1136- 1054- 01	Ljuddämpare.....	Muffler.....		
32	2				9997- 0820- 16	Skruv.....	Screw.....		
33	2				9677- 0009- 02	Låsbricka.....	Lock washer.....		
34	2				1136- 0004- 01	Fyrkantmutter.....	Square nut.....		
35	1				1136- 1812- 01	Skydd.....	Guard.....		
36	2				9997- 0816- 16	Skruv.....	Screw.....		
37	2				9683- 0030- 02	Låsbricka.....	Lock washer.....		



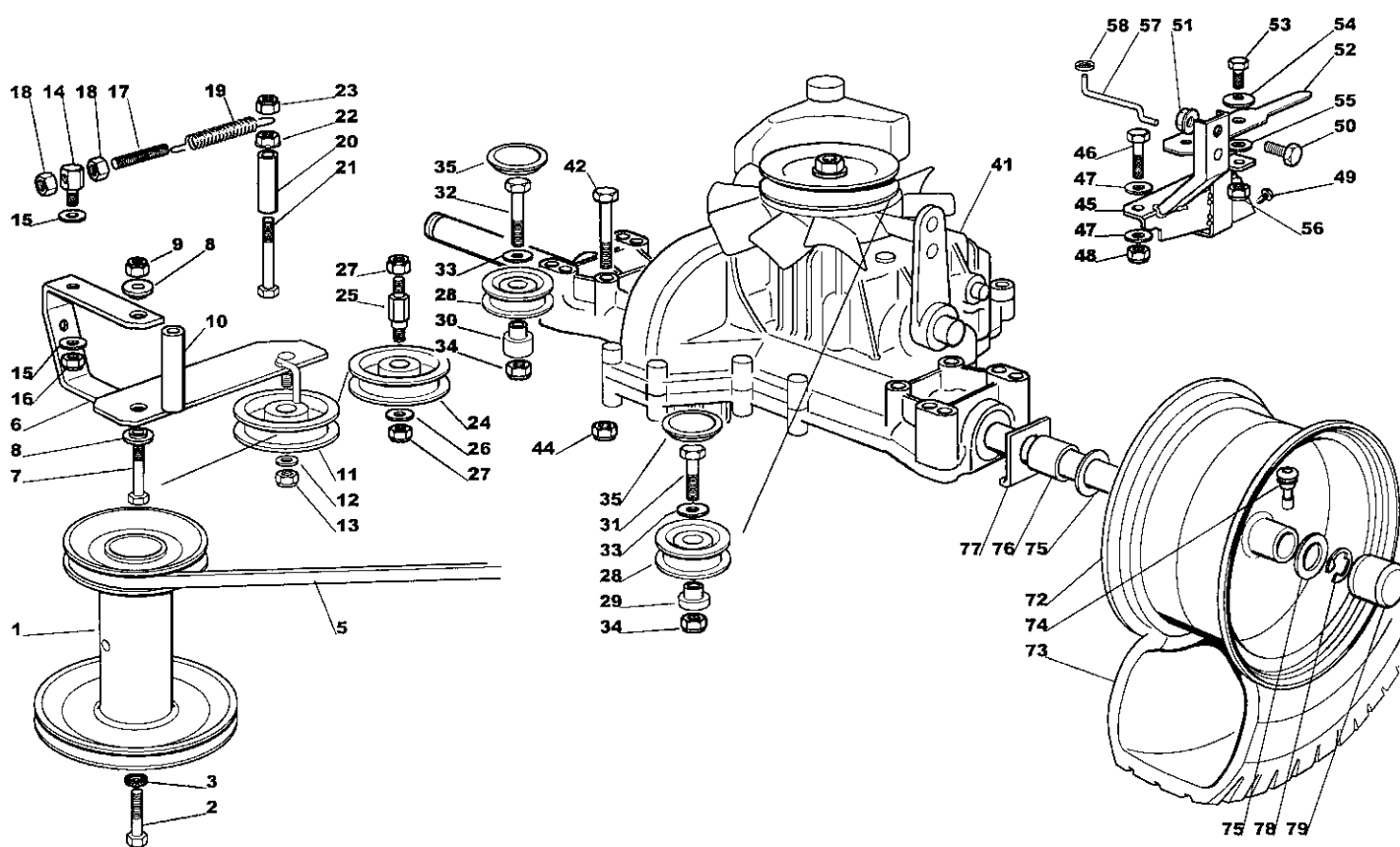
Utgåva Issue 2006- 13		Bildnr Picture No 1864		ESTATE PRESIDENT MOTOR (Honda)		ESTATE PRESIDENT ENGINE (Honda)		Sida Page 114	
Pos. Fig.	Antal/Quantity				Art nr Part No	Benämning	Description	Sats Kit	Anmärkning Notes
	2556 - 41								
2	1				1136- 1791- 01	Bränsleslang	Fuel hose		
3	2				1136- 0045- 01	Slangklämma	Hose clamp		
5	1				1136- 1397- 01	Skruv	Screw		
6	1				9677- 0009- 02	Låsbricka	Lock washer		
7	4				9997- 0840- 16	Skruv	Screw		
8	4				9739- 0831- 22	Mutter	Nut		
9	1				1136- 1788- 01	Oljeavtappningsrör	Oil drain pipe		
10	1				1136- 0066- 01	Oljeavtappningsplugg	Oil drain plug		
11	1				1136- 0054- 01	Tätningssring	Oil seal		
12	1				1136- 1778- 01	Avgasrör- hö	Exhaust tube- RH		
13	1				1136- 1779- 01	Avgasrör- vä	Exhaust tube- LH		
31	1				1136- 1053- 01	Ljuddämpare	Muffler		
32	2				9997- 0820- 16	Skruv	Screw		
33	2				9677- 0009- 02	Låsbricka	Lock washer		
34	2				1136- 0004- 01	Fyrkantmutter	Square nut		
35	1				1136- 1047- 01	Skydd	Guard		
36	2				9997- 0816- 16	Skruv	Screw		
37	2				9683- 0030- 02	Låsbricka	Lock washer		



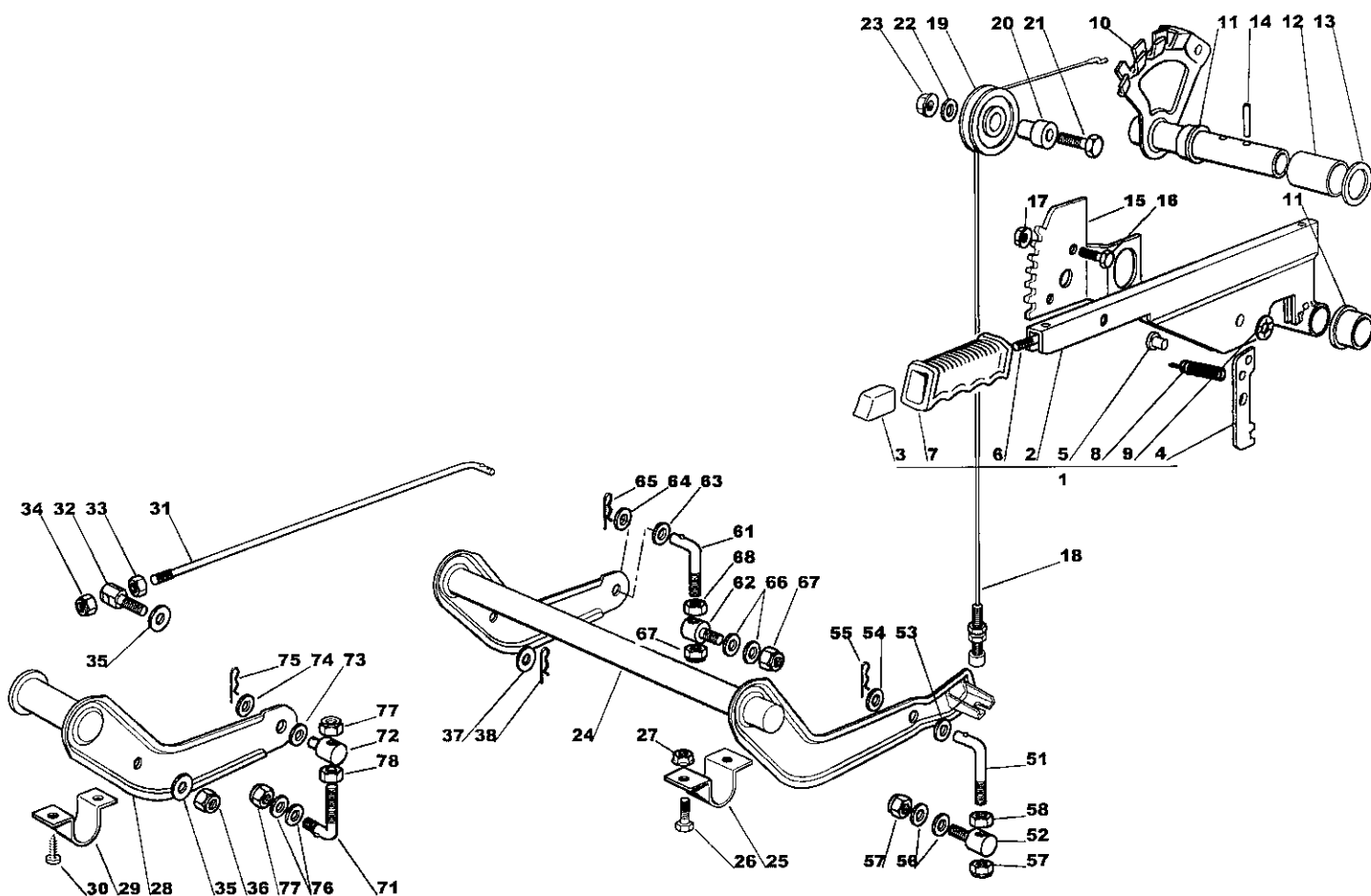
Utgåva Issue		Bildnr Picture No		ESTATE SENATOR TRANSMISSION		ESTATE SENATOR TRANSMISSION		Sida Page	
2006- 13		1217						116	
Pos. Fig.	Antal/Quantity				Art nr Part No	Benämning	Description	Sats Kit	Anmärkning Notes
	2553								
1	1				1136-0286-01	Motorremskiva	Engine belt pulley		
2	1				9987-5351-12	Skruv	Screw		
3	1				9683-0045-02	Bricka	Washer		
5	1				1136-0433-01	Kilrem	V- belt		
6	1				1136-0489-01	Spännarm	Tension arm		
7	1				9997-0630-12	Skruv	Screw		
8	2				1136-0123-01	Bussning	Bushing		
9	1				9747-0831-02	Mutter	Lock nut		
10	1				1136-0166-01	Distans	Spacer		
11	1				1136-0289-01	Spännrulle	Idler pulley		
12	1				9699-0056-02	Planbricka	Flat washer		
13	1				9747-0831-02	Mutter	Lock nut		
14	1				1136-0235-01	Ledbult	Pivot bolt		
15	2				1136-0309-01	Bricka	Washer		
16	1				9747-0831-02	Mutter	Lock nut		
17	1				1136-0348-01	Spännstång	Tie rod		
18	2				9799-0831-02	Mutter	Nut		
19	1				1136-0208-01	Fjäder	Spring		
20	1				1136-0162-01	Distans	Spacer		
21	1				9997-0880-16	Skruv	Screw		
22	1				9739-0831-22	Mutter	Nut		
23	1				9747-0831-02	Mutter	Lock nut		
24	1				1136-0346-01	Spännstång	Tie rod		
25	1				1136-0093-01	Kulled	Ball joint		
26	1				9683-0030-02	Låsbricka	Lock washer		
27	1				9799-0831-02	Mutter	Nut		
28	1				9699-0090-02	Planbricka	Flat washer		
29	1				9675-0012-02	Starlock	Locking washer		
30	1				1136-0290-01	Remrulle	Belt roller		
31	1				1136-0234-01	Pinnbult	Stud bolt		
32	1				9699-0056-02	Planbricka	Flat washer		
33	2				9747-0831-02	Mutter	Lock nut		
34	2				1136-0915-01	Remrulle	Belt roller		
35	1				1136-0167-01	Distans- vä	Spacer- LH		
36	1				1136-0164-01	Distans- hö	Spacer- RH		
37	1				9997-0835-12	Skruv	Screw		
38	1				9997-0845-12	Skruv	Screw		
39	2				9699-0056-02	Planbricka	Flat washer		
40	2				9747-0831-02	Mutter	Lock nut		
41	1				1136-0520-01	Remskiva	Belt pulley		
42	1				9600-0050-00	Woodruffkil	Key		
43	1				9650-0016-04	Spårring	Lock ring		
44	1				1136-0050-01	Transaxel	Transaxle		
45	4				9997-0860-16	Skruv	Screw		Peerless MST 205-535
47	4				9739-0831-22	Mutter	Nut		
48	2				1136-0325-01	Momentstag	Stay		
49	2				1136-0017-01	Skruv	Screw		
50	2				9997-0816-16	Skruv	Screw		
51	2				9739-0831-22	Mutter	Nut		
52	1				1136-0181-01	Remstyrning	Belt guide		
53	2				9699-0035-02	Planbricka	Flat washer		
54	2				9739-0631-22	Mutter	Nut		
55	2				1136-0868-01	Lock	Cover		
72	2				1136-0455-01	Fälg	Rim		
73	2				1136-2132-01	Däck (Kenda)	Tire (Kenda)		
74	2-4				9699-0119-02	Bricka	Washer		
75	2				1136-0305-01	Bricka	Washer		
76	2				9652-0015-04	Låsring	Retaining ring		
77	2				1136-0081-01	Navkapsel	Hub cap		
78	2				9545-0500-00	Ventil	Valve		

Peerless MST 205-535

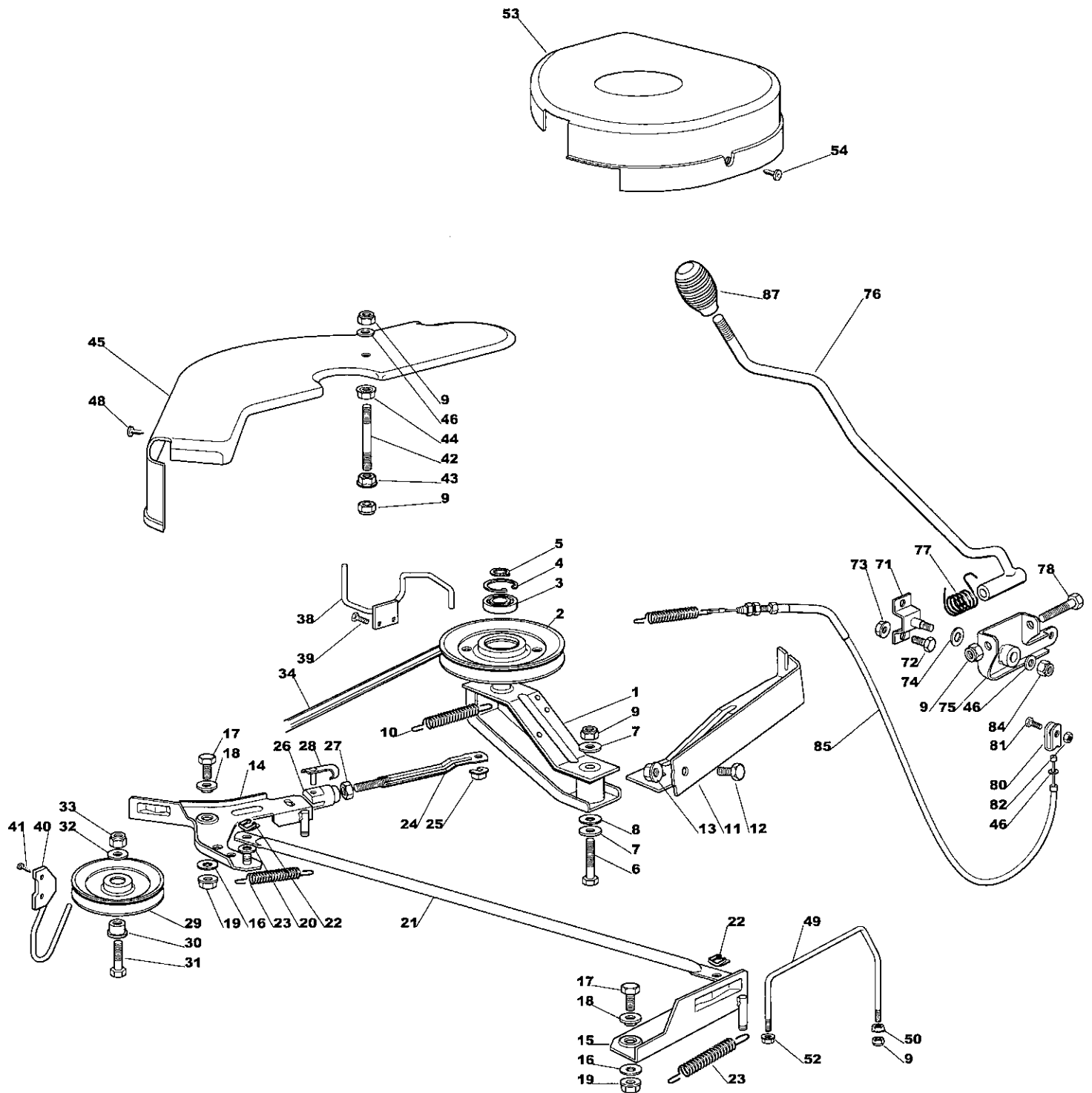
X



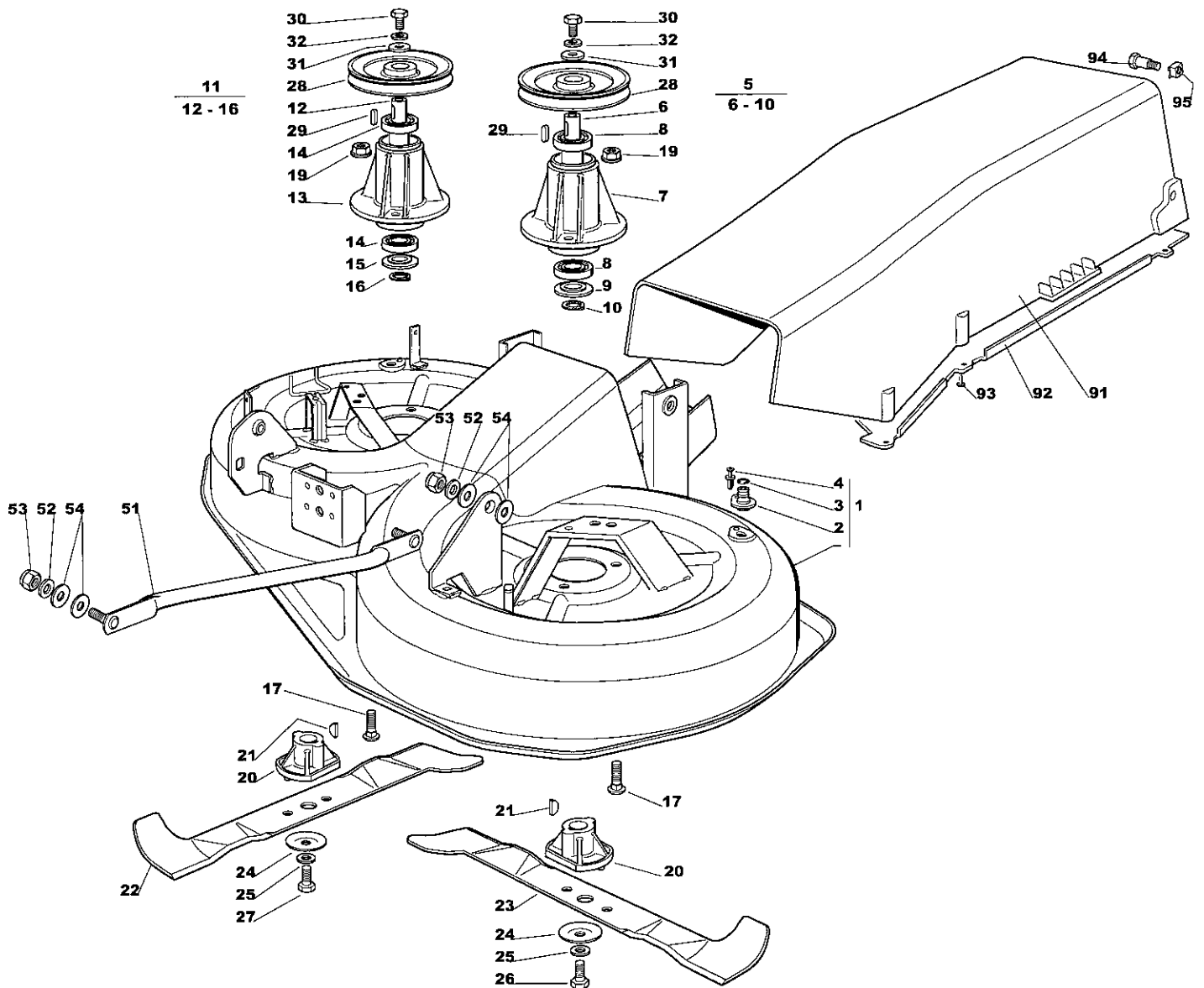
Utgåva Issue		Bildnr Picture No		ESTATE PRESIDENT TRANSMISSION		ESTATE PRESIDENT TRANSMISSION		Sida Page	
2006- 13		1218						118	
Pos. Fig.	Antal/Quantity				Art nr Part No	Benämning	Description	Sats Kit	Anmärkning Notes
	2556								
1	1				1136-0287-01	Motorremskiva	Engine belt pulley		Kanzaki K46S
2	1				9987-5351-12	Skruv	Screw		
3	1				9683-0045-02	Bricka	Washer		
5	1				1136-0432-01	Kilrem	V- belt		
6	1				1136-0489-01	Spännarm	Tension arm		
7	1				9997-0630-12	Skruv	Screw		
8	2				1136-0123-01	Bussning	Bushing		
9	1				9747-0831-02	Mutter	Lock nut		
10	1				1136-0166-01	Distans	Spacer		
11	1				1136-0289-01	Spännrulle	Idler pulley		
12	1				9699-0056-02	Planbricka	Flat washer		
13	1				9747-0831-02	Mutter	Lock nut		
14	1				1136-0235-01	Ledbult	Pivot bolt		
15	2				1136-0309-01	Bricka	Washer		
16	1				9747-0831-02	Mutter	Lock nut		
17	1				1136-0348-01	Spännstång	Tie rod		
18	2				9799-0831-02	Mutter	Nut		
19	1				1136-0208-01	Fjäder	Spring		
20	1				1136-0162-01	Distans	Spacer		
21	1				9997-0880-16	Skruv	Screw		
22	1				9739-0831-22	Mutter	Nut		
23	1				9747-0831-02	Mutter	Lock nut		
24	1				1136-0290-01	Remrulle	Belt roller		
25	1				1136-0234-01	Pinnbult	Stud bolt		
26	1				9699-0056-02	Planbricka	Flat washer		
27	2				9747-0831-02	Mutter	Lock nut		
28	2				1136-0915-01	Remrulle	Belt roller		
29	1				1136-0174-01	Distans- vä	Spacer- LH		
30	1				1136-0170-01	Distans- hö	Spacer- RH		
31	1				9997-0840-16	Skruv	Screw		
32	1				9997-0850-16	Skruv	Screw		
33	2				9699-0056-02	Planbricka	Flat washer		
34	2				9747-0831-02	Mutter	Lock nut		
35	2				1136-0868-01	Lock	Cover		
41	1				1136-0053-01	Transaxel	Transaxle		
42	4				9997-0860-16	Skruv	Screw		
44	4				9739-0831-22	Mutter	Nut		
45	1				1136-0543-01	Stöd	Support		
46	1				9997-0845-12	Skruv	Screw		
47	2				9699-0090-02	Planbricka	Flat washer		
48	1				9747-0831-02	Mutter	Lock nut		
49	2				9847-8216-16	Skruv	Screw		
50	1				9997-0816-16	Skruv	Screw		
51	1				9739-0831-22	Mutter	Nut		
52	1				1136-0190-01	Arm	Lever		
53	1				9997-0820-16	Skruv	Screw		
54	1				1136-0006-01	Fjäderbricka	Elastic washer		
55	1				1136-0309-01	Bricka	Washer		
56	1				9747-0831-02	Mutter	Lock nut		
57	1				1136-0114-01	Stag	Rod		
58	1				9675-0009-02	Starlock	Starlock		
72	2				1136-0455-01	Fälg	Rim		
73	2				1136-2132-01	Däck (Kenda)	Tire (Kenda)		
74	2				9545-0500-00	Ventil	Valve		
75	2-4				9699-0119-02	Bricka	Washer		
76	2				1136-0175-01	Distans	Spacer		
77	2				1136-0312-01	Bricka	Washer		
78	2				9652-0015-04	Låsring	Retaining ring		
79	2				1136-0081-01	Navkapsel	Hub cap		



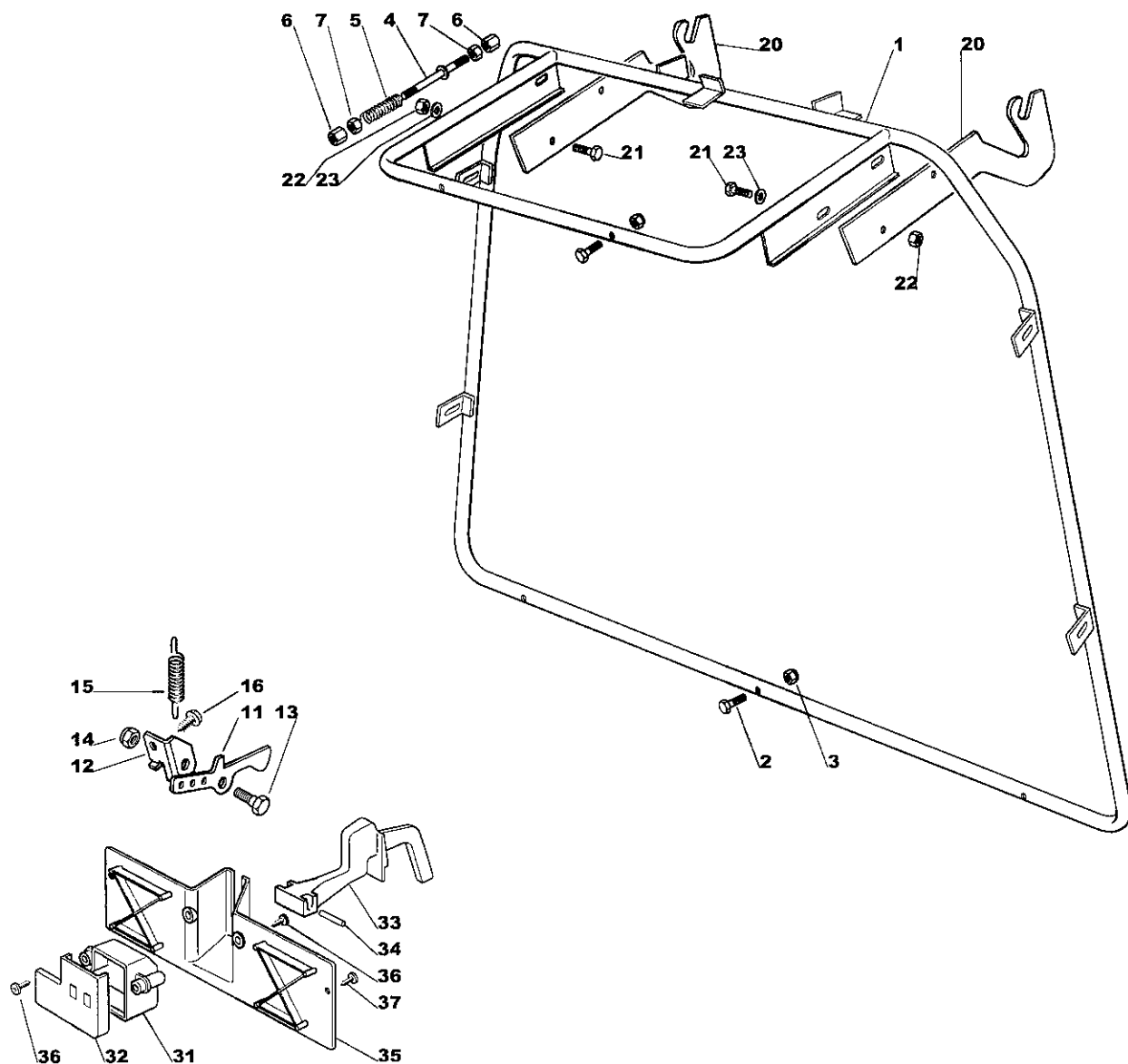
Utgåva Issue 2006- 13		Bildnr Picture No 1219A		ESTATE SENATOR ESTATE PRESIDENT AGGREGATSLYFT		ESTATE SENATOR ESTATE PRESIDENT MOWER DECK LIFT		Sida Page 120	
Pos. Fig.	Antal/Quantity				Art nr Part No	Benämning	Description	Sats Kit	Anmärkning Notes
	2553 2556								
1	1				1136-0487-01	Lyftspak kpl	Lift lever assy.....		Inkl. pos 2 - 9
2	1				1136-0493-01	• Lyftspak	• Lift lever		
3	1				1136-0298-01	• Tryckknapp	• Button		
4	1				1136-0222-01	• Spärrhake	• Dog		
5	1				1136-0227-01	• Sprint.....	• Pin.....		
6	1				1136-0105-01	• Tryckstäng	• Push rod		
7	1				1136-0193-01	• Handtag	• Handle.....		
8	1				1136-0203-01	• Fjäder	• Spring		
9	1				9675-0012-02	• Starlock	• Locking washer.....		
10	1				1136-0444-01	Lyftaxel	Axle		
11	2				1136-0078-01	Bussning	Bushing.....		
12	1				1136-0163-01	Distans	Spacer.....		
13	1				9699-0119-02	Bricka	Washer.....		
14	2				9595-0235-00	Spännstift	Locating pin		
15	1				1136-0319-01	Höjdställn.segment	Height adjust sector		
16	2				9997-0816-16	Skruv	Screw.....		
17	2				9739-0831-22	Mutter	Nut		
18	1				1136-0460-01	Lyftwire.....	Lift wire		
19	1				1136-0291-01	Wirerulle	Cable pulley.....		
20	1				1136-0232-01	Distans	Spacer.....		
21	1				9997-0850-16	Skruv	Screw.....		
22	1				9699-0056-02	Planbricka	Flat washer		
23	1				9739-0831-22	Mutter	Nut		
24	1				1136-0443-01	Lyftaxel	Lift axle		
25	2				1136-0253-01	Bygel	Clamp		
26	4				9997-0616-16	Skruv	Screw.....		
27	4				9739-0631-22	Mutter	Nut		
28	1				1136-0492-01	Lyftarm	Lift arm		
29	2				1136-0255-01	Bygel	Clamp.....		
30	4				9847-8016-16	Skruv	Screw.....		
31	1				1136-0108-01	Lyftstag	Lift rod		
32	1				1136-0235-01	Ledbult	Pivot bolt.....		
33	1				9799-0831-02	Mutter	Nut		
34	1				9747-0831-02	Mutter	Lock nut		
35	2				1136-0309-01	Bricka	Washer.....		
36	1				9747-0831-02	Mutter	Lock nut		
37	1				9699-0090-02	Planbricka	Flat washer		
38	1				1136-0095-01	Låsnål	Hair pin		
51	1				1136-0347-01	Lyftlänk	Lift tie rod		
52	1				1136-0231-01	Ledbult	Pivot bolt.....		
53	1				9699-0035-02	Planbricka	Flat washer		
54	1				1136-0308-01	Bricka	Washer.....		
55	1				1136-0095-01	Låsnål	Hair pin		
56	2				1136-0308-01	Bricka	Washer.....		
57	2				9747-1031-02	Låsmutter	Lock nut.....		
58	1				9799-1031-02	Mutter	Nut		
61	1				1136-0347-01	Lyftlänk	Lift tie rod		
62	1				1136-0231-01	Ledbult	Pivot bolt.....		
63	1				9699-0035-02	Planbricka	Flat washer		
64	1				1136-0308-01	Bricka	Washer.....		
65	1				1136-0095-01	Låsnål	Hair pin		
66	2				1136-0308-01	Bricka	Washer.....		
67	2				9747-1031-02	Låsmutter	Lock nut.....		
68	1				9799-1031-02	Mutter	Nut		
71	1				1136-1249-01	Lyftlänk	Lift tie rod		
72	1				1136-1241-01	Ledbult	Pivot bolt.....		
73	1				1136-0308-01	Bricka	Washer.....		
74	1				9699-0035-02	Planbricka	Flat washer		
75	1				1136-0095-01	Låsnål	Hair pin		
76	2				1136-0308-01	Bricka	Washer.....		
77	2				9747-1031-02	Låsmutter	Lock nut.....		
78	1				9799-1031-02	Mutter	Nut		



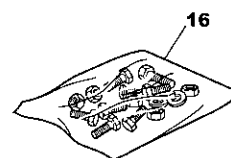
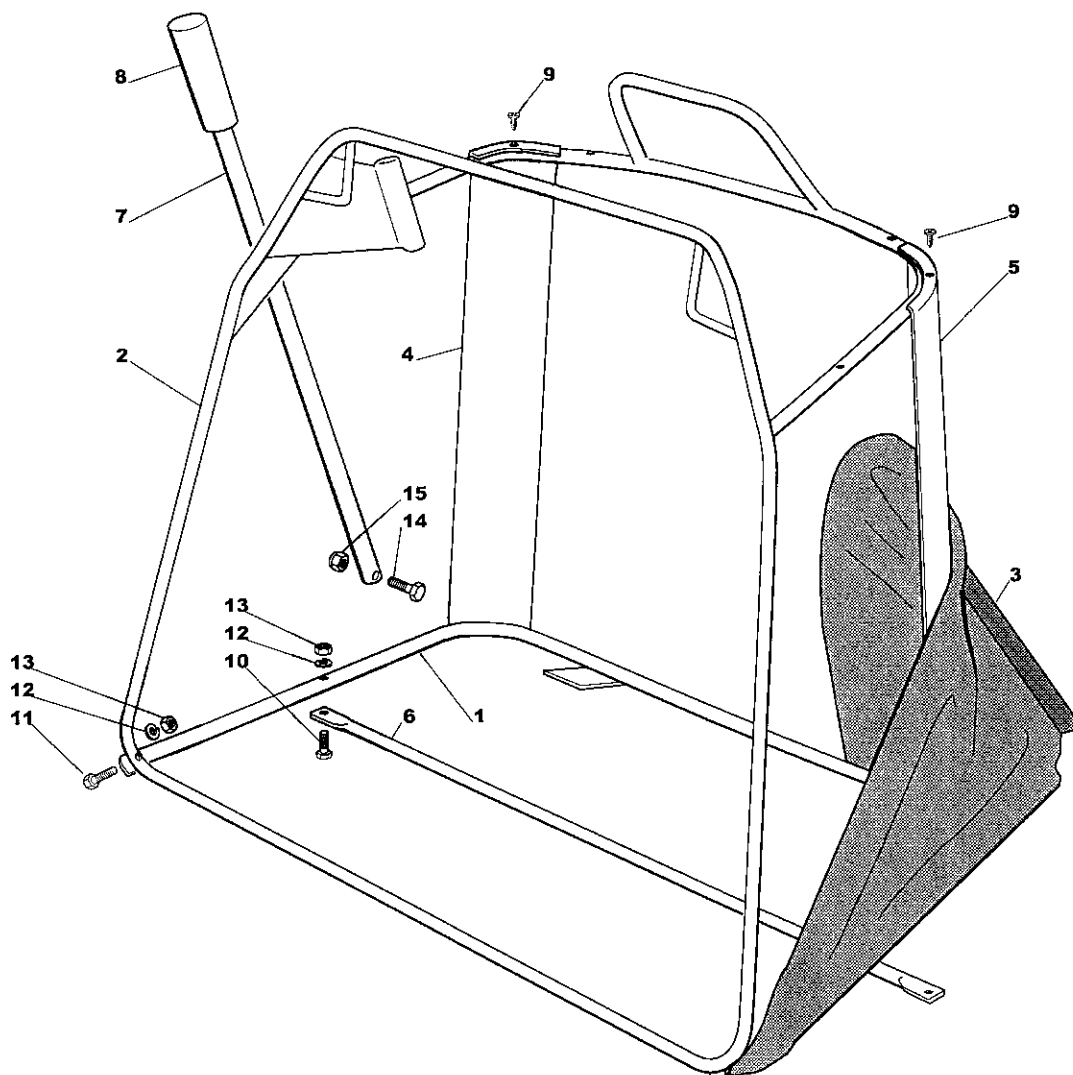
Utgåva Issue		Bildnr Picture No		ESTATE SENATOR ESTATE PRESIDENT AGGREGATSINKOPPLING		ESTATE SENATOR ESTATE PRESIDENT MOWER DECK ENGAGEMENT		Sida Page	
2006- 13		1220D						122	
Pos. Fig.	Antal/Quantity				Art nr Part No	Benämning	Description	Sats Kit	Anmärkning Notes
	2553	2556							
1	1				1136-0494-01	Spännarm	Tension arm		
2	1				1136-0296-01	Spännrulle	Idler pulley		
3	1				1136-0070-01	Kullager	Ball bearing		
4	1				9651-0035-04	Låsring	Lock ring		
5	1				9650-0015-04	Låsring	Lock ring		
6	1				9997-0890-12	Skruv	Screw		
7	2				1136-0014-01	Bricka	Washer		
8	1				1136-0089-01	Bricka	Washer		
9	5				9747-0831-02	Mutter	Lock nut		
10	1				1136-0085-01	Fjäder	Spring		
11	1				1136-0531-01	Wirehållare	Wire holder		
12	1				9997-0816-16	Skruv	Screw		
13	1				9739-0831-22	Mutter	Nut		
14	1				1136-0495-01	Arm- hö	Lever- RH		
15	1				1136-0496-01	Arm- vä	Lever- LH		
16	2				1136-0089-01	Bricka	Washer		
17	2				9997-0816-16	Skruv	Screw		
18	2				1136-0079-01	Bussning	Bushing		
19	2				9739-0831-22	Mutter	Nut		
20	1				1136-0309-01	Bricka	Washer		
21	1				1136-0110-01	Stag	Rod		
22	2				1136-0009-01	Låsplatta	Lock plate		
23	2				1136-0214-01	Fjäder	Spring		
24	1				1136-1280-01	Stång	Rod		
25	1				1136-0009-01	Låsplatta	Lock plate		
26	1				1136-0047-01	Gaffel	Fork		
27	1				9799-0631-02	Mutter	Nut		
28	1				1136-0042-01	Låsbult	Clip bolt		
29	1				1136-0290-01	Remrulle	Belt roller		
30	1				1136-0161-01	Distans	Spacer		
31	1				9997-0835-12	Skruv	Screw		
32	1				9699-0056-02	Planbricka	Flat washer		
33	1				9747-0831-02	Mutter	Lock nut		
34	1				1136-0437-01	Sextantsrem	Hexagon belt		
38	1				1136-0180-01	Remstyrning	Belt guide		
39	2				9847-8116-16	Skruv	Screw		
40	1				1136-0182-01	Remstyrning	Belt guide		
41	2				9847-8016-16	Skruv	Screw		
42	1				1136-0265-01	Pinnbult	Stud bolt		
43	1				9739-0831-22	Mutter	Nut		
44	1				9739-0831-22	Mutter	Nut		
45	1				1136-0130-01	Kåpa	Cover		
46	3				9699-0056-02	Planbricka	Flat washer		
48	2				9848-8013-16	Skruv	Screw		
49	1				1136-1235-01	Remstyrning	Belt guide		
50	1				9739-0831-22	Mutter	Nut		
52	1				9739-0631-22	Mutter	Nut		
53	1				1136-0131-01	Remkåpa	Belt cover		
54	2				9848-8013-16	Skruv	Screw		
71	1				1136-0537-01	Fäste	Support		
72	2				9997-0816-16	Skruv	Screw		
73	2				9739-0831-22	Mutter	Nut		
74	1				1136-0088-01	Bricka	Washer		
75	1				1136-0528-01	Spakhållare	Lever holder		
76	1				1136-0491-01	Inkopplingsspak	Engagement lever		
77	1				1136-0213-01	Fjäder	Spring		
78	1				9997-0880-16	Skruv	Screw		
80	1				1136-0080-01	Anslutningsgaffel	Connecting fork		
81	1				9997-0620-16	Skruv	Screw		
82	1				9747-0631-02	Låsmutter	Lock nut		
84	1				9712-0831-02	Låsmutter	Lock nut		
85	1				1136-0461-01	Krafttuttagswire	PTO- wire		
87	1				1136-0197-01	Handtag	Knob		



Utgåva Issue 2006- 13		Bildnr Picture No 1221C		ESTATE SENATOR ESTATE PRESIDENT KLIPPAGGREGAT		ESTATE SENATOR ESTATE PRESIDENT MOWER DECK		Sida Page 124	
Pos. Fig.	Antal/Quantity				Art nr Part No	Benämning	Description	Sats Kit	Anmärkning Notes
	2553								
1	1				1136- 1289- 01	Klippagggregatskåpa	Mower deck casing		Inkl. pos 2 - 4
2	2				1136- 0120- 01	• Vattenslangnippel	• Water hose connection.....		
3	2				1136- 0068- 01	• O- ring	• O- ring		
4	2				1136- 0012- 01	• Nit	• Rivet		
5	1				1136- 0481- 01	Lagerbox kpl	Bearing box assy		Inkl. pos 6 - 10
6	1				1136- 0099- 01	• Knivaxel	• Blade shaft		
8	2				1136- 0069- 01	• Kullager	• Ball bearing		
9	1				1136- 0176- 01	• Dammskydd	• Dust cover		
10	1				9650- 0020- 04	• Spårring	• Circlip		Inkl. pos 12 - 16
11	1				1136- 0482- 01	Lagerbox kpl	Bearing box assy		
12	1				1136- 0100- 01	• Knivaxel	• Blade shaft		
14	2				1136- 0069- 01	• Kullager	• Ball bearing		
15	1				1136- 0176- 01	• Dammskydd	• Dust cover		
16	1				9650- 0020- 04	• Spårring	• Circlip		
17	6				9898- 0825- 16	Skruv	Screw		
19	6				9739- 0831- 22	Mutter	Nut		
20	2				1136- 0221- 01	Knivfäste	Blade hub		
21	2				9600- 0014- 00	Kil	Key		
22	1				1136- 1799- 01	Kniv- hö	Blade- RH		
23	1				1136- 1798- 01	Kniv- vä	Blade- LH		
24	2				1136- 0083- 01	Fjäderbricka	Elastic washer		
25	2				1136- 0015- 01	Bricka	Washer		
26	1				9987- 5238- 12	Knivbult	Blade bolt		
27	1				1136- 0018- 01	Knivbult (vä- gängad)	Blade bolt (L thread)		
28	2				1136- 1244- 01	Remskiva	Belt pulley		
29	2				1136- 0001- 01	Kil	Key		
30	2				9997- 0820- 16	Skruv	Screw		
31	2				1136- 0307- 01	Bricka	Washer		
32	2				9683- 0030- 02	Låsbricka	Lock washer		
51	2				1136- 0448- 01	Stång	Equalizer rod		
52	4				9699- 0035- 02	Planbricka	Flat washer		
53	4				9747- 1031- 02	Låsmutter	Lock nut		
54	8				1136- 0308- 01	Bricka	Washer		
91	1				1136- 0139- 01	Utkaströr	Discharge chute		
92	1				1136- 0177- 01	Deflektor	Deflector		
93	6				9836- 9618- 12	Skruv	Screw		
94	2				1136- 0245- 01	Bult	Pin bolt		
95	2				1136- 0005- 01	Fyrkantmutter	Square nut		



Utgåva Issue		Bildnr Picture No		ESTATE SENATOR ESTATE PRESIDENT UPPSAMLARE (fast del)		ESTATE SENATOR ESTATE PRESIDENT GRASS CATCHER (fixed part)		Sida Page	
2006- 13		1222A						126	
Pos. Fig.	Antal/Quantity				Art nr Part No	Benämning	Description	Sats Kit	Anmärkning Notes
	2553								
1	1				1136-0547-01	Ram.....	Frame.....		
2	5				9997-0625-16	Skruv.....	Screw.....		
3	5				9747-0631-02	Låsmutter.....	Lock nut.....		
4	1				1136-0445-01	Tryckstång.....	Push rod.....		
5	1				1136-0216-01	Fjäder.....	Spring.....		
6	2				1136-0236-01	Tryckmutter.....	Push nut.....		
7	2				9799-0631-02	Mutter.....	Nut.....		
11	1				1136-1476-01	Fäste.....	Bracket.....		
12	1				1136-1474-01	Fäste.....	Bracket.....		
13	1				1136-1470-01	Sprint.....	Pin.....		
14	1				9739-0631-22	Mutter.....	Nut.....		
15	1				1136-0209-01	Fjäder.....	Spring.....		
16	1				1136-1465-01	Skruv.....	Screw.....		
20	2				1136-0334-01	Stöd.....	Support.....		
21	4				9997-0820-16	Skruv.....	Screw.....		
22	4				9747-0831-02	Mutter.....	Lock nut.....		
23	4				9699-0090-02	Planbricka.....	Flat washer.....		
31	1				1136-0280-01	Brytarskydd.....	Micro protection.....		
32	1				1136-0281-01	Skyddslock.....	Protection cover.....		
33	1				1136-0186-01	Brytararm.....	Switch lever.....		
34	1				1136-0007-01	Axel.....	Pin.....		
35	1				1136-0326-01	Fäste.....	Bracket.....		
36	3				9847-8013-16	Skruv.....	Screw.....		
37	2				9848-8013-16	Skruv.....	Screw.....		



Utgåva Issue 2006- 13		Bildnr Picture No 1223A		ESTATE SENATOR ESTATE PRESIDENT UPPSAMLARE (rörlig del)		ESTATE SENATOR ESTATE PRESIDENT GRASS CATCHER (mobile part)		Sida Page 128	
Pos. Fig.	Antal/Quantity				Art nr Part No	Benämning	Description	Sats Kit	Anmärkning Notes
	2553 2556								
1	1				1136-0546-01	Ram- nedre.....	Frame- lower.....		Inkl. pos 9 - 15
2	1				1136-0545-01	Ram- övre.....	Frame- upper.....		
3	1				1136-0473-01	Uppsamlingsäck.....	Grass bag.....		
4	1				1136-0104-01	Vinkelstöd- hö.....	Angle support- RH.....		
5	1				1136-0103-01	Vinkelstöd- vä.....	Angle support- LH.....		
6	1				1136-0523-01	Förstärkningsstag.....	Reinforcement rod.....		
7	1				1136-0355-01	Spak.....	Lever.....		
8	1				1136-0195-01	Handtag.....	Handle.....		
9	4				9847-8116-16	• Skruv.....	• Screw.....		
10	2				9997-0630-12	• Skruv.....	• Screw.....		
11	2				9997-0630-12	• Skruv.....	• Screw.....		
12	4				9683-0010-02	• Bricka.....	• Washer.....		
13	4				9799-0631-02	• Mutter.....	• Nut.....		
14	1				9997-0630-12	• Skruv.....	• Screw.....		
15	1				9747-0631-02	• Låsmutter.....	• Lock nut.....		
16	1				1136-0598-01	Skruvsats.....	Screw set.....		