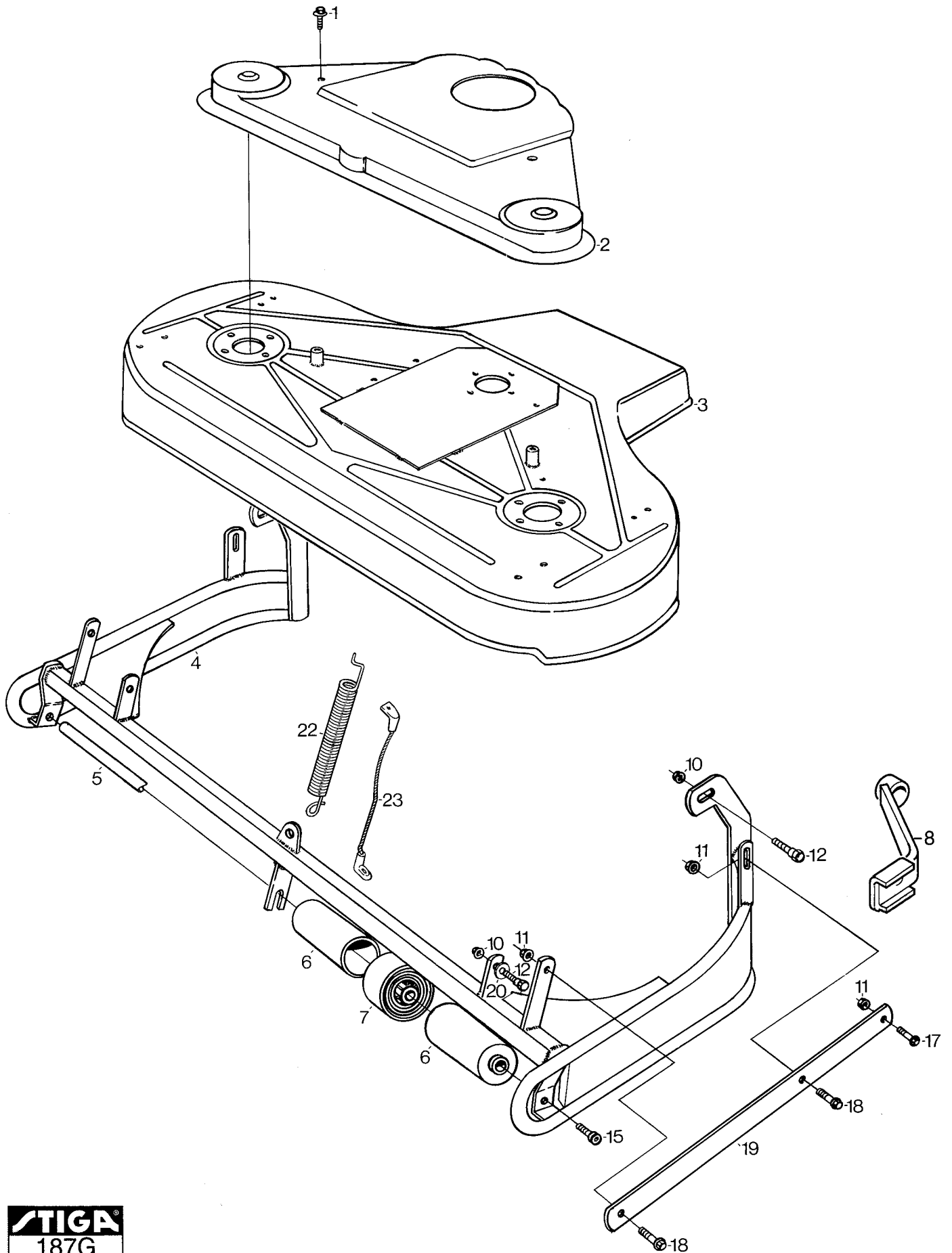


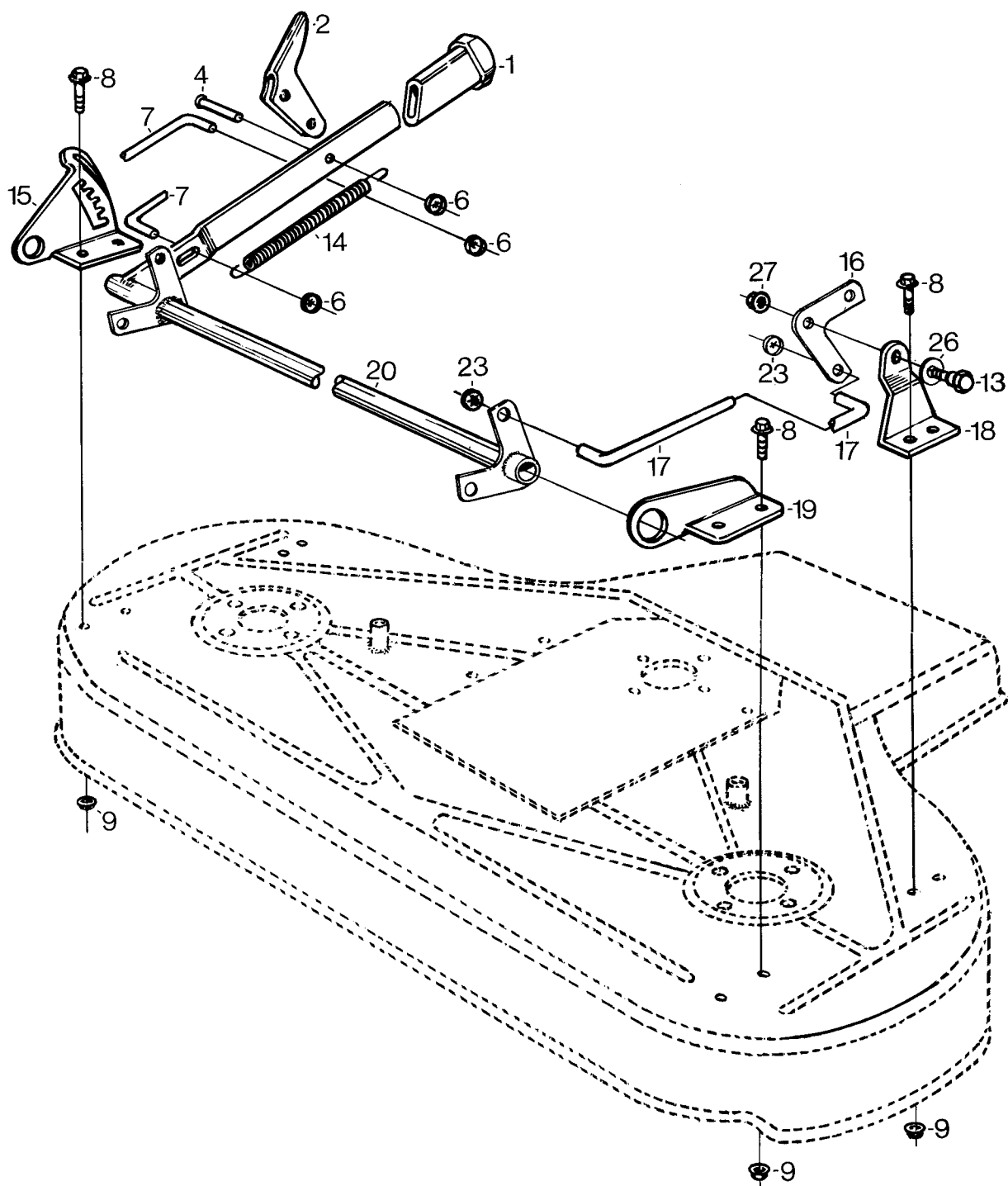
Genuine Spare Parts



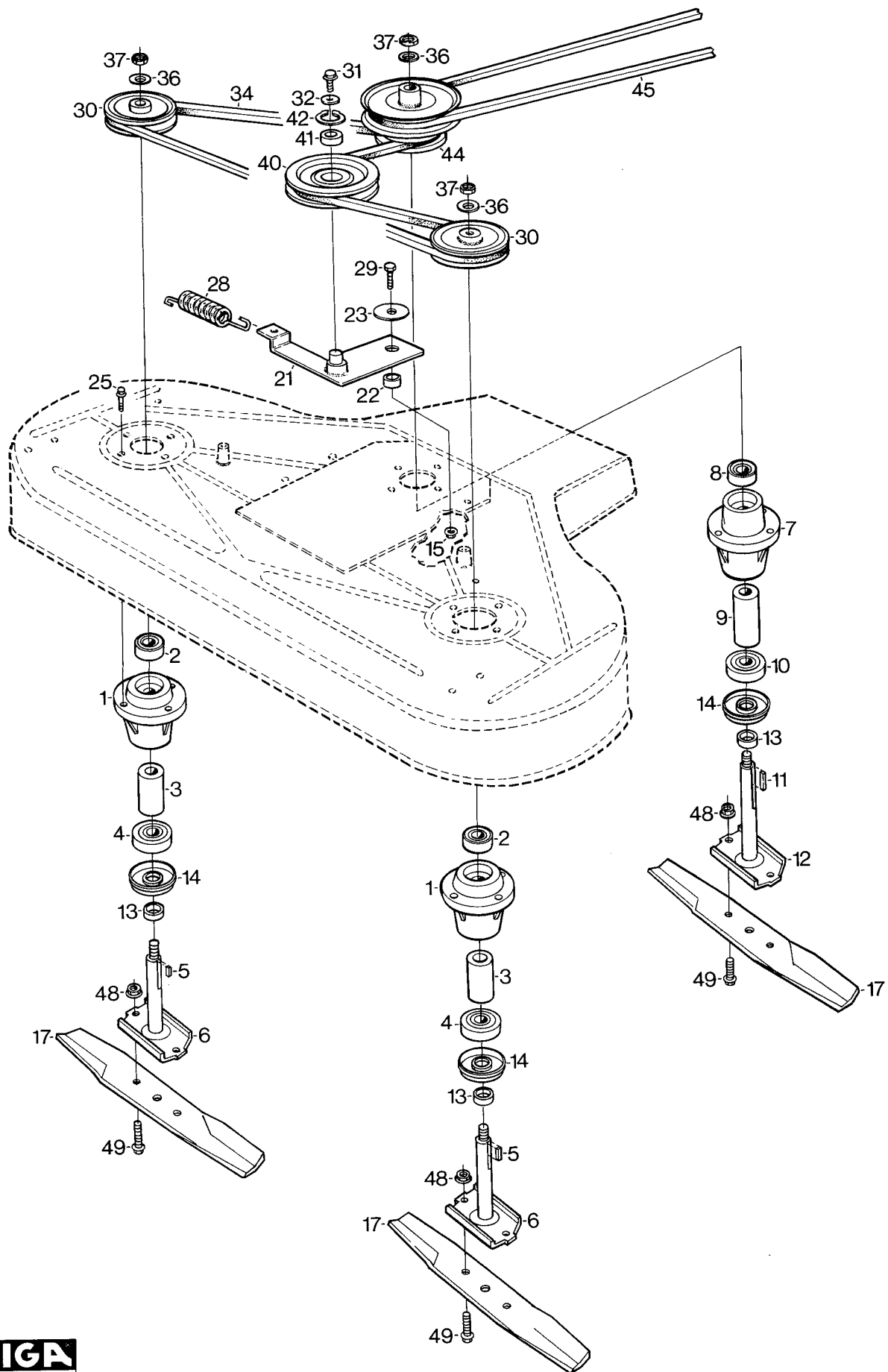


Utgåva Issue 2006- 11		Bildnr Picture No 187G		PARK KLIPPAGGREGAT 100B RAM		PARK MOWER DECK 100B FRAME		Sida Page 174	
Pos. Fig.	Antal/Quantity				Art nr Part No	Benämning	Description	Sats Kit	Anmärkning Notes
	2922								
1	2				9945-0816-16	Skruv	Screw		
2	1				1134-1767-01	Transmissionskåpa	Transmission casing		
3	1				1134-2193-01	Kåpa	Casing		
4	1				1134-1271-01	Ram	Frame		
5	1				1134-0304-03	Axel	Shaft		
6	8				1134-0299-00	Skyddsrulle	Guard roller		
7	4				1134-0305-00	Kåphjul	Casing wheel		
8	2				1134-3710-01	Redskapsfäste	Tool attachment		
10	4				9747-0831-02	Mutter	Lock nut		
11	6				9739-1031-22	Mutter	Nut		
12	4				1134-0240-00	Ansattsskruv	Shoulder screw		
15	2				9935-1020-16	Skruv	Screw		
17	2				9898-1035-16	Skruv	Screw		
18	4				9959-1025-16	Skruv	Screw		
19	2				1134-0369-03	Fäststag	Attaching bar		
20	2				9665-0002-00	Brickfjäder	Bowed washer		
22	1				1134-2535-01	Fjäder	Spring		
23	1				1134-2314-01	Lyftwire	Lift wire		
98	1				9402-3124-00	Varn.decal "Danger"	Warn. label "Danger"		Ej ill/not ill.
99	1				8211-3014-08	Bruksanvisning	Owner's manual		Ej ill/not ill.
99	1				9402-3203-00	Varn.decal m. symbol	Warn. label w.Symbols		Ej ill/not ill.

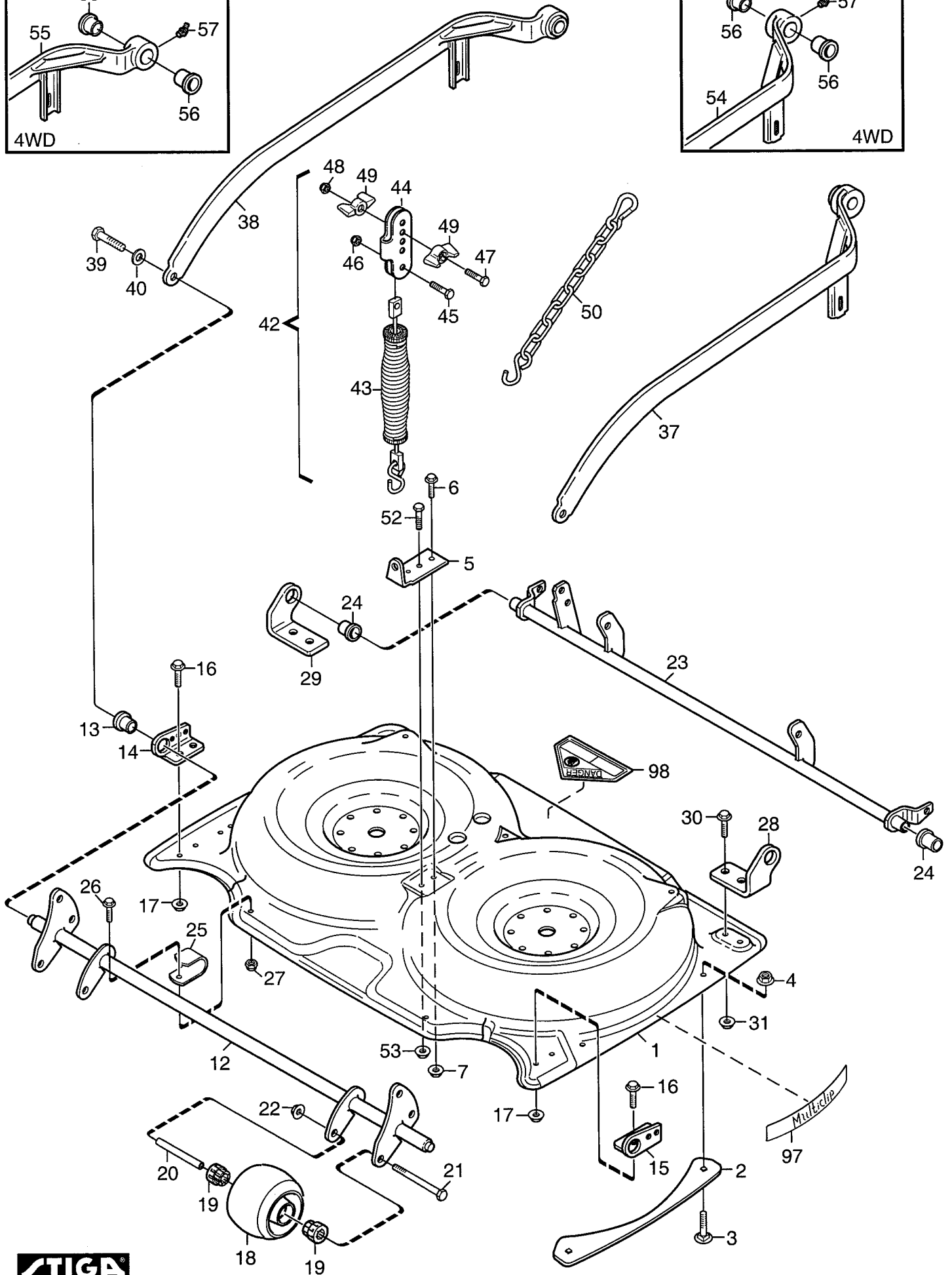
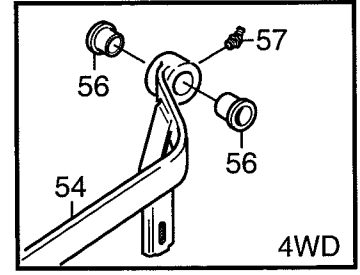
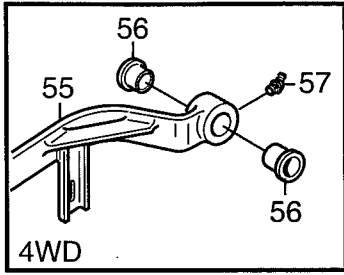
X



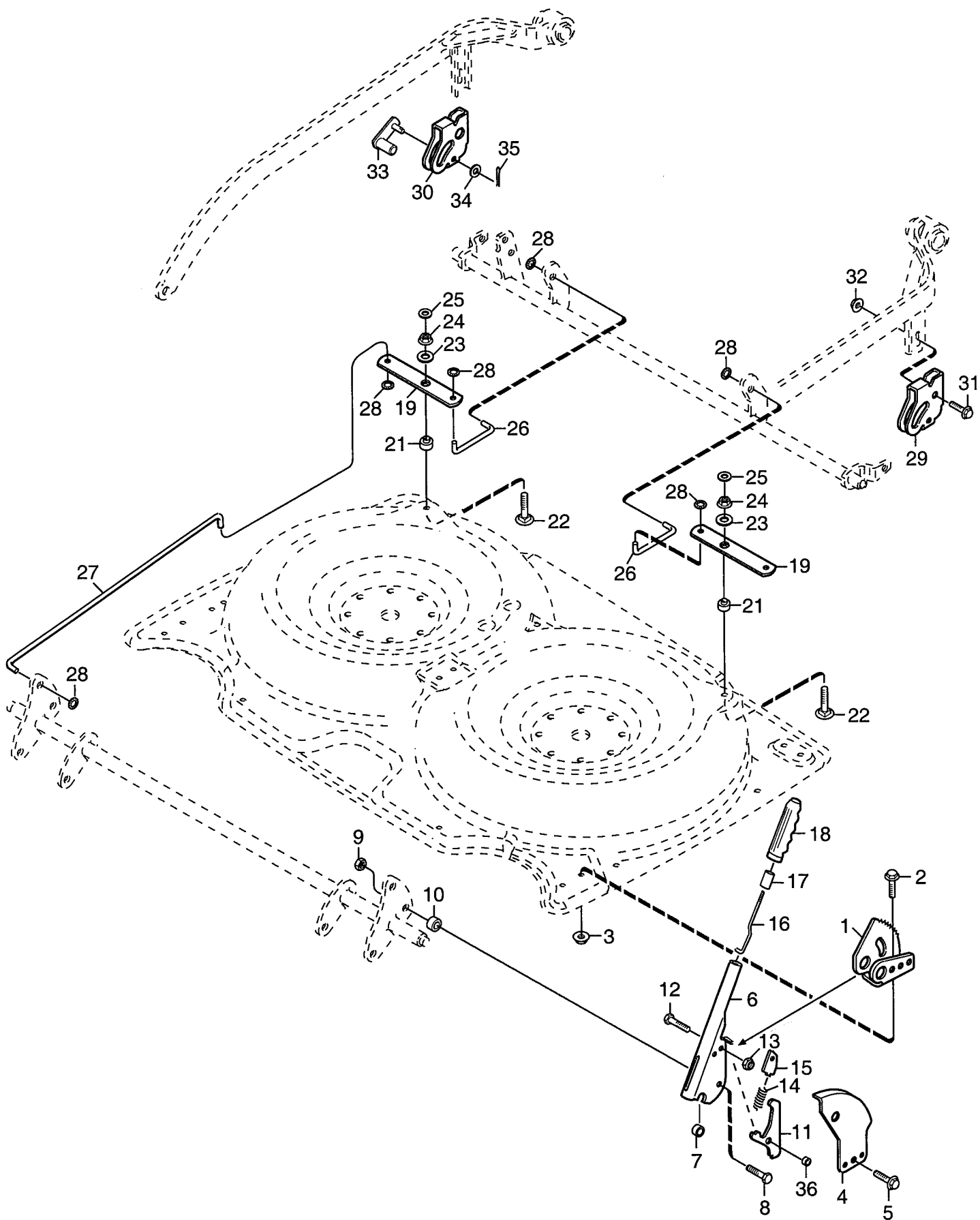
Utgåva Issue 2006- 11		Bildnr Picture No 121D		PARK KLIPPAGGREGAT 100B REGLAGE		PARK MOWER DECK 100B CONTROLS		Sida Page 176	
Pos. Fig.	Antal/Quantity				Art nr Part No	Benämning	Description	Sats Kit	Anmärkning Notes
	2922								
1	1				1134- 1069- 01	Handtag	Handle.....		
2	1				1134- 1326- 01	Reglageöra	Control lug		
4	1				9646- 0064- 22	Nit.....	Rivet.....		
6	3				9675- 0009- 02	Starlock	Starlock		
7	1				1134- 0343- 00	Höjdinställningsslid	Slide for height adj.....		
8	8				9959- 0820- 16	Skruv	Screw.....		
9	8				9739- 0831- 22	Mutter.....	Nut		
13	2				1134- 0240- 00	Ansattsskruv	Shoulder screw		
14	1				1134- 0361- 00	Fjäder.....	Spring		
15	1				1134- 0457- 04	Höjdinställn.segment.....	Height adj. quadrant.....		
16	2				1134- 2907- 03	Pivotplatta	Pivoting plate		
17	2				1134- 1833- 02	Stag	Rod		
18	2				1134- 0328- 04	Kåpkonsol	Casing bracket		
19	1				1134- 0312- 04	Parallellstagsfäste.....	Tie rod bracket		
20	1				1134- 0425- 04	Parallellaxel	Tie rod.....		
23	4				9675- 0012- 02	Starlock	Locking washer.....		
26	2				9665- 0002- 00	Brickfjäder	Bowed washer.....		
27	2				9747- 0831- 02	Mutter.....	Lock nut.....		



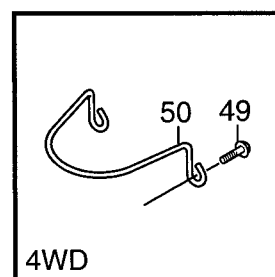
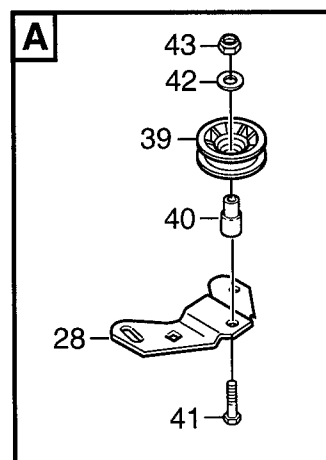
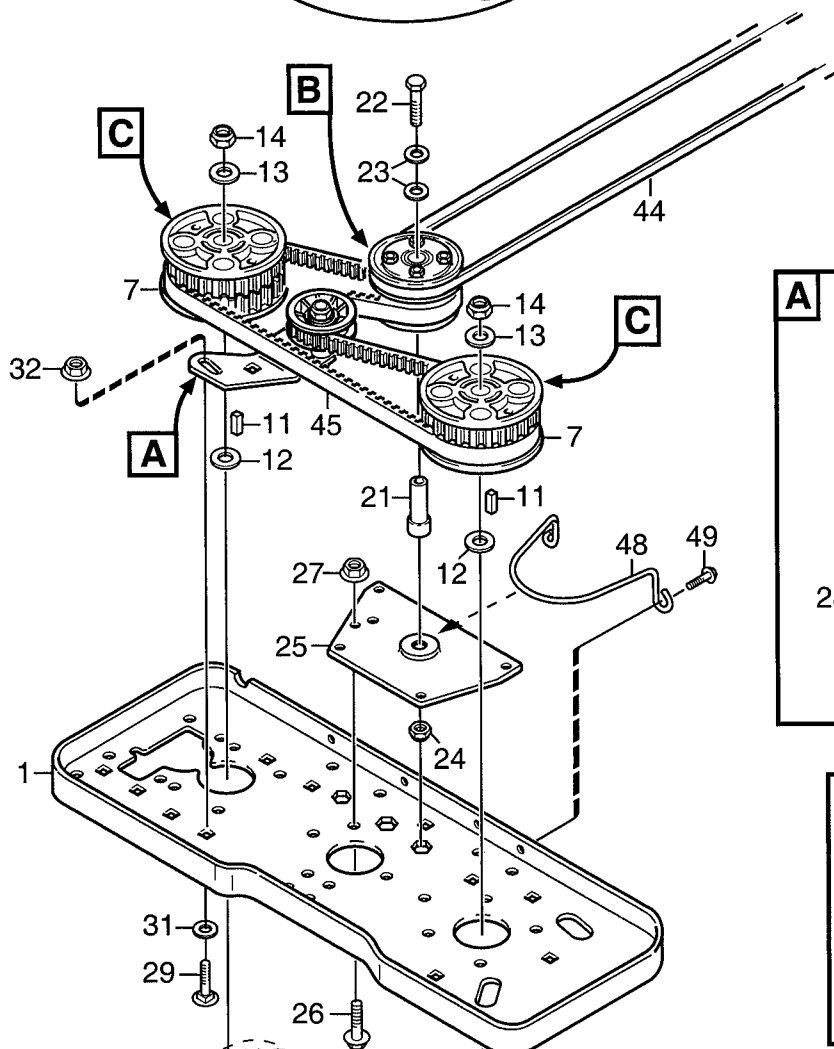
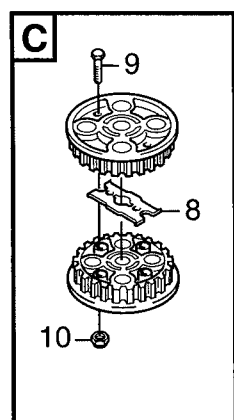
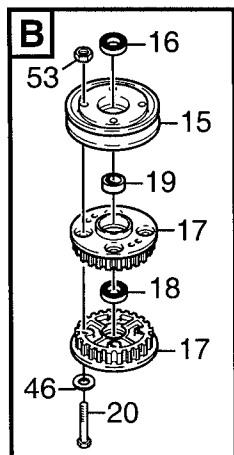
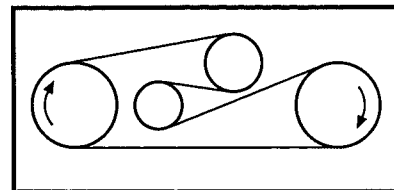
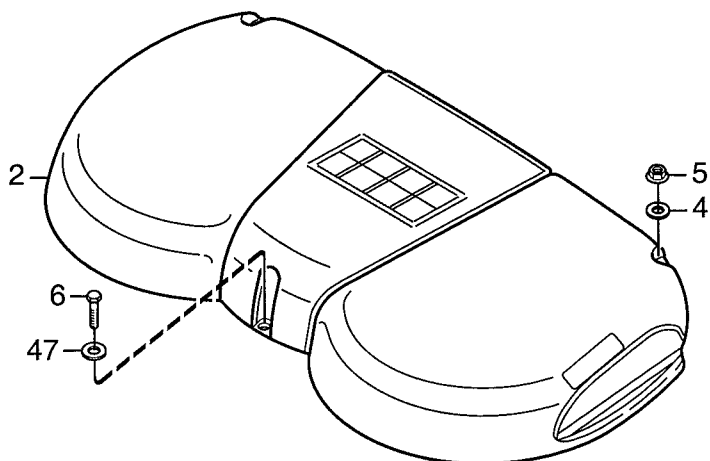
Utgåva Issue 2006- 11		Bildnr Picture No 968		PARK KLIPPAGGREGAT 100B TRANSMISSION KNIVAR		PARK MOWER DECK 100B TRANSMISSION BLADES		Sida Page 178	
Pos. Fig.	Antal/Quantity				Art nr Part No	Benämning	Description	Sats Kit	Anmärkning Notes
	2922								
1	2				1134-3841-01 Lagerbox kpl.....	Bearing box assy.....			
2	1				9549-0019-00 • Kullager	• Ball bearing			
3	1				1134-0051-05 • Distans	• Spacer			
4	1				9549-0020-00 • Kullager	• Ball bearing			
5	2				1134-0323-00 Plattkil	Key			L = 12 mm
6	2				1134-3767-03 Knivaxel	Blade shaft			
7	1				1134-3841-02 Lagerbox kpl.....	Bearing box assy.....			
8	1				9549-0019-00 • Kullager	• Ball bearing			
9	1				1134-0051-06 • Distans	• Spacer			
10	1				9549-0020-00 • Kullager	• Ball bearing			
11	1				1134-0323-01 Kil	Key			L = 25 mm
12	1				1134-4600-01 Knivaxel	Blade shaft			
13	3				1134-3725-02 Distans	Spacer			
14	3				1134-5130-01 Skyddsbricka	Bearing cover			
15	1				9739-0831-22 Mutter	Nut			
17	1				1134-9001-01 Rotorkniv- sats	Rotor blade kit			Sats 3 st/kit of 3
21	1				1134-0325-02 Spännarm	Tensioning arm			
22	1				1131-1684-00 Distans	Spacer			
23	1				9699-0109-02 Planbricka.....	Flat washer			
25	12				9945-0825-16 Skruv	Screw			
28	1				1134-0327-00 Kåpfjäder	Spring			
29	1				9959-0820-16 Skruv	Screw			
30	2				1134-1285-01 Remskiva.....	Belt pulley			
31	1				9945-0816-16 Skruv	Screw			
32	1				9699-0056-02 Planbricka.....	Flat washer			
34	1				1134-9006-01 Drivrem	V- belt.....			= 9585-0108-00
36	3				1134-5236-01 Bricka	Washer			
37	3				1134-4775-01 Låsmutter	Lock nut			
40	1				1134-0698-00 Spännrulle kpl.....	Tension roller assy			
41	1				9549-0017-00 • Kullager	• Ball bearing			
42	1				9651-0035-04 • Låsring	• Lock ring			
44	1				1134-1738-01 Kåpremskiva.....	Belt pulley			
45	1				1134-9011-01 Kilrem	V- belt.....			= 9585-0054-00
48	6				9747-0831-02 Mutter	Lock nut			
49	6				9997-0820-16 Skruv	Screw			



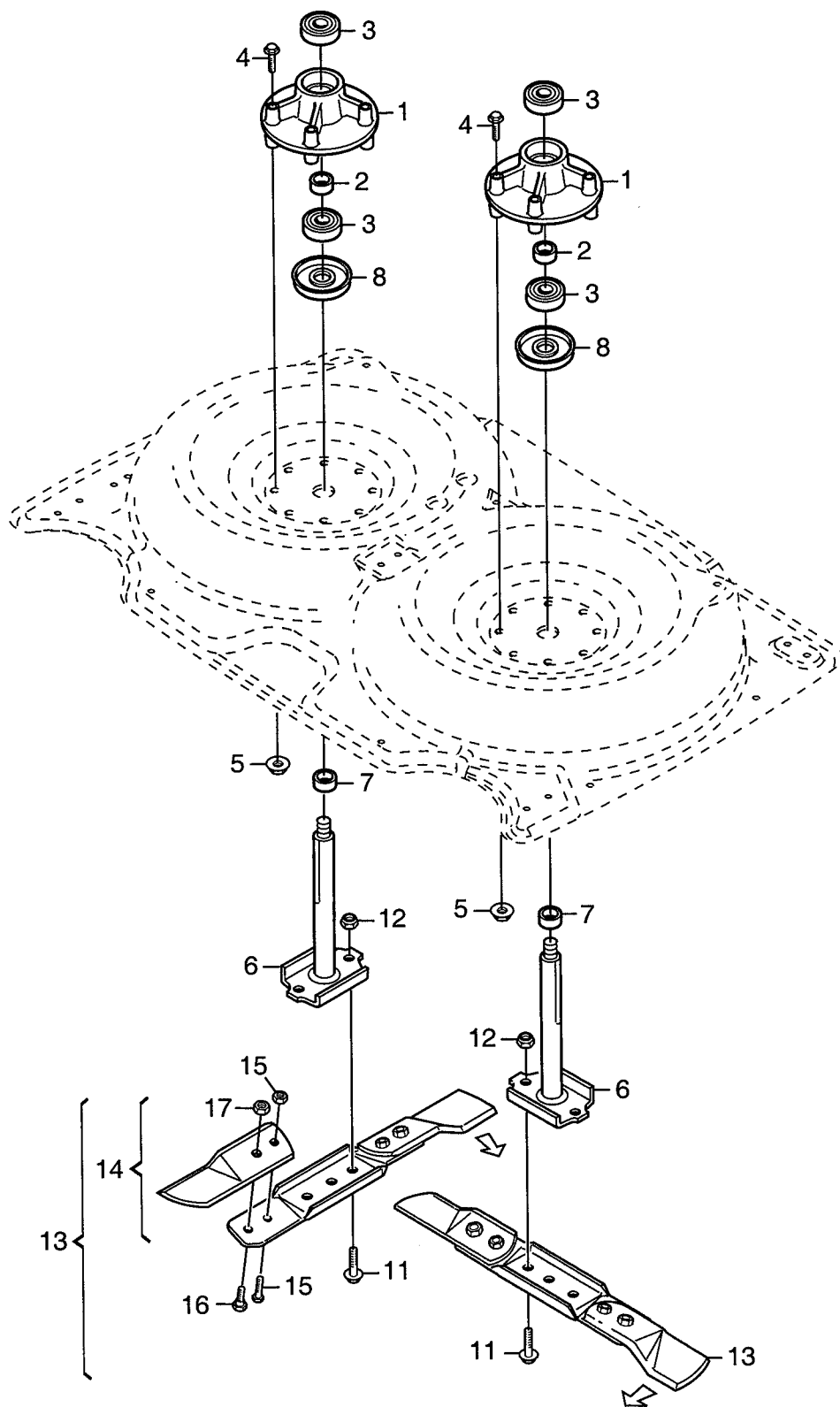
Utgåva Issue 2006- 11		Bildnr Picture No 1309B		PARK KLIPPAGGREGAT 92M RAM		PARK MOWER DECK 92M FRAME		Sida Page 180	
Pos. Fig.	Antal/Quantity				Art nr Part No	Benämning	Description	Sats Kit	Anmärkning Notes
	2939	2933							
1	1	1			1134-4888-01	Kåpa	Casing		Sats 4 st/kit of 4
2	2	2			1134-4323-01	Ledplåt	Guide plate		
3	4	4			9897-0616-16	Vagnsbult	Carriage bolt		
4	4	4			9739-0631-22	Mutter	Nut		
5	1	1			1134-4320-06	Lyftöra	Lift bracket		
6	1	1			9959-0820-16	Skruv	Screw		
7	1	1			9739-0831-22	Mutter	Nut		
12	1	1			1134-4890-01	Framaxel	Front axle		
13	1	1			1134-9024-01	Lager	Bearing		
14	1	1			1134-4292-01	Lagerfäste	Bearing holder		
15	1	1			1134-4292-02	Lagerfäste	Bearing holder		
16	2	2			9959-0816-16	Skruv	Screw		
17	2	2			9739-0831-22	Mutter	Nut		
18	2	2			1134-4284-01	Hjul	Wheel		
19	4	4			1134-4319-01	Lager	Bearing		
20	2	2			1134-4318-01	Hylsa	Wheel axle		
21	2	2			9997-0812-02	Skruv	Screw		
22	2	2			9739-0831-22	Mutter	Nut		
23	1	1			1134-5892-01	Bakaxel	Rear axle		
24	1	1			1134-9024-01	Lager	Bearing		
25	2	2			1134-4689-01	Stöd	Support		
26	2	2			9959-0616-16	Skruv	Screw		
27	2	2			9747-0631-02	Låsmutter	Lock nut		
28	1	1			1134-5180-01	Fäste- vä	Bracket- LH		
29	1	1			1134-5180-02	Fäste- hö	Bracket- RH		
30	4	4			9959-0816-16	Skruv	Screw		
31	4	4			9739-0831-22	Mutter	Nut		
37	1				1134-5600-01	Aggregatsarm- vä	Mower deck arm- LH		
38	1				1134-5600-02	Aggregatsarm- hö	Mower deck arm- RH		
39	2	2			9997-1016-16	Skruv	Screw		
40	2	2			9699-0030-02	Planbricka	Flat washer		
42	1	1			1134-4688-02	Lyftfjäder kpl	Lift spring assy		
43	1	1			1134-4574-01	• Fjäder kpl	• Spring assy		
44	1	1			1134-4577-01	• Pendel	• Spring pivot		
45	1	1			9997-0825-16	• Skruv	• Screw		
46	1	1			9747-0831-02	• Mutter	• Lock nut		
47	1	1			9997-0835-12	• Skruv	• Screw		
48	1	1			9747-0831-02	• Mutter	• Lock nut		
49	2	2			1134-4481-01	• Vingmutter	• Wing nut		
50		1			1134-5952-01	Kedja	Chain		
52	1	1			9997-0620-16	Skruv	Screw		
53	1	1			9739-0631-22	Mutter	Nut		
54		1			1134-6088-01	Aggregatsarm- vä	Mower deck arm- LH		
55		1			1134-6088-02	Aggregatsarm- hö	Mower deck arm- RH		
56		2			1134-5686-02	• Lagerbussning	• Bearing bush		
57		1			9501-0502-00	• Smörjnippel	• Grease joint		
97	2	2			9402-3523-01	Sidodekal	Side decal		
98	1	1			9402-3124-00	Varn.decal "Danger"	Warn. label "Danger"		
99		1			8211-0543-04	Bruksanvisning	Owner's manual		
99	1				8211-3036-06	Bruksanvisning	Owner's manual		
								US, CA Ej ill/not ill. Ej ill/not ill.	



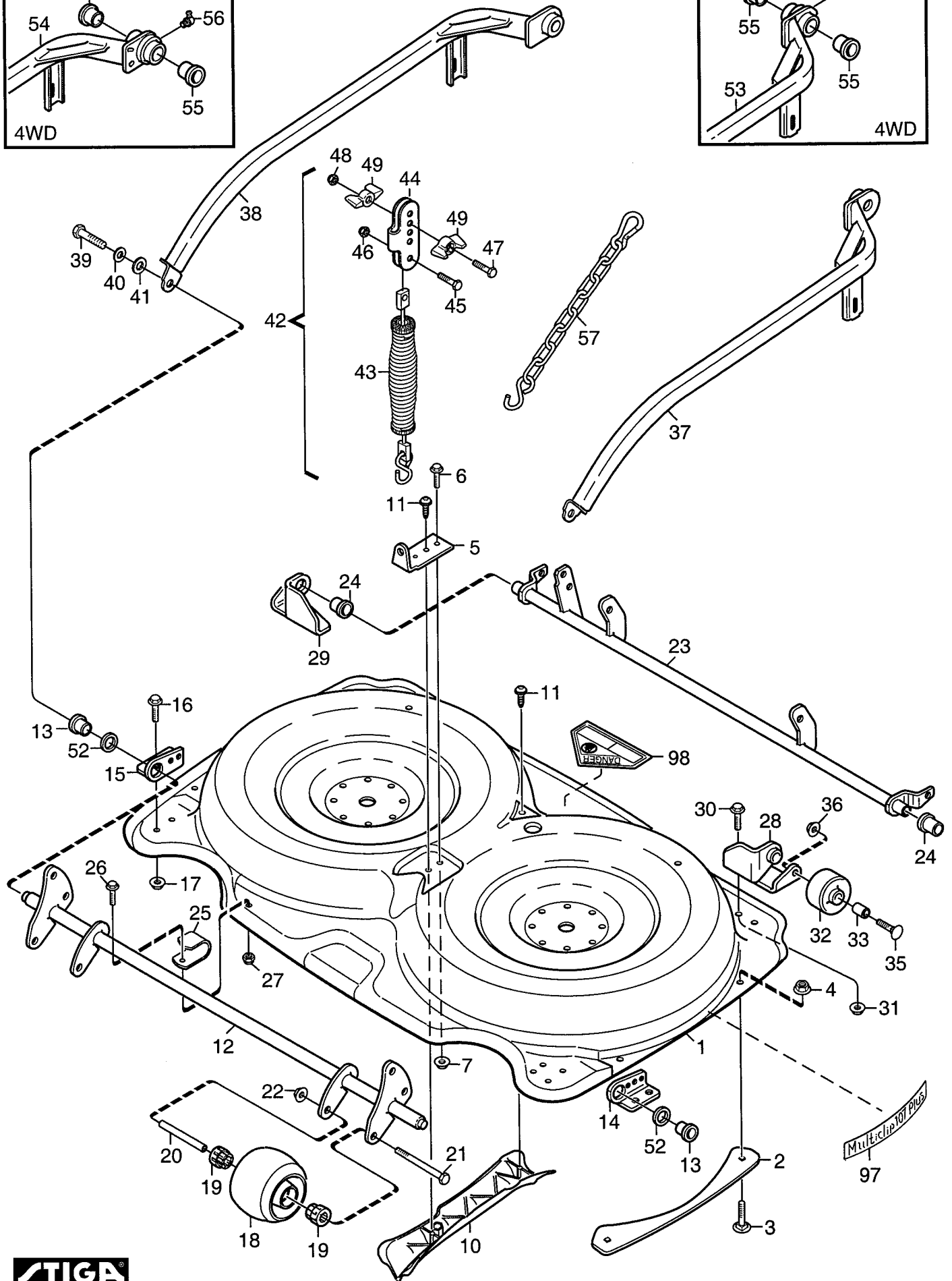
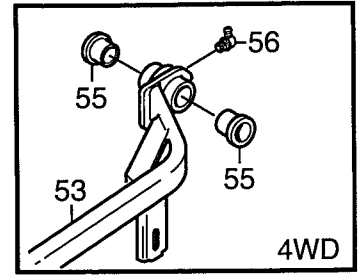
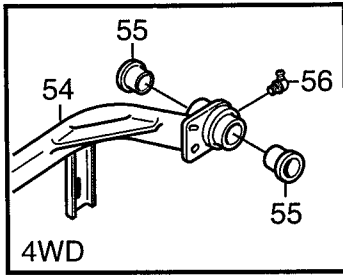
Utgåva Issue 2006- 11		Bildnr Picture No 1169B		PARK KLIPPAGGREGAT 92M REGLAGE		PARK MOWER DECK 92M CONTROLS		Sida Page 182	
Pos. Fig.	Antal/Quantity				Art nr Part No	Benämning	Description	Sats Kit	Anmärkning Notes
	2933	2939							
1	1				1134-4536-01	Höjdsegment	Height adj. quadrant.....		Inkl. pos 11 - 18, 36
2	2				9959-0816-16	Skruv	Screw		
3	2				9739-0831-22	Mutter	Nut		
4	1				1134-4291-03	Höjdvisningsplåt	Height adjust plate		
5	1				9945-0816-16	Skruv	Screw		
6	1				1134-5215-01	Höjdinställn.spak kpl	Height adj.lever assy		
7	1				1134-2427-01	Distans	Spacer		
8	1				9997-0840-16	Skruv	Screw		
9	1				9747-0831-02	Mutter	Lock nut		
10	1				1134-3113-03	Distans	Spacer		
11	1				1134-3010-02	• Låssegment	• Locking quadrant		
12	1				9997-0620-16	• Skruv	• Screw		
13	1				9747-0631-02	• Låsmutter	• Lock nut		
14	1				1134-3262-01	• Tryckfjäder	• Compression spring		
15	1				1134-3009-01	• Låskil	• Locking key		
16	1				1134-3041-01	• Reglagestång	• Control rod		
17	1				1134-3051-01	• Spärrknapp	• Locking knob		
18	1				9406-0006-00	• Handtag	• Handle		
19	2				1134-4296-02	Länkarm	Pivot arm		
21	2				1134-4298-02	Distans	Spacer		
22	2				9897-0850-12	Skruv	Screw		
23	2				9699-0028-02	Planbricka	Flat washer		
24	2				9747-0831-02	Mutter	Lock nut		
25	2				9699-0056-02	Planbricka	Flat washer		
26	2				1134-4894-03	Tryckstång	Push rod		
27	2				1134-4294-04	Tryckstång	Push rod		
28	8				9675-0012-02	Starlock	Locking washer		
29	1				1134-4304-01	Justerplåt- vä	Adjusting plate- LH		
30	1				1134-4304-02	Justerplåt- hö	Adjusting plate- RH		
31	2				9959-0816-16	Skruv	Screw		
32	2				9739-0831-22	Mutter	Nut		
33	2				1134-4307-01	Låshake	Catch		
34	2				9699-0025-02	Planbricka	Washer		
35	2				9599-0054-02	Saxpinne	Cotter pin		
36	1				1134-5114-01	• Distans	• Spacer		



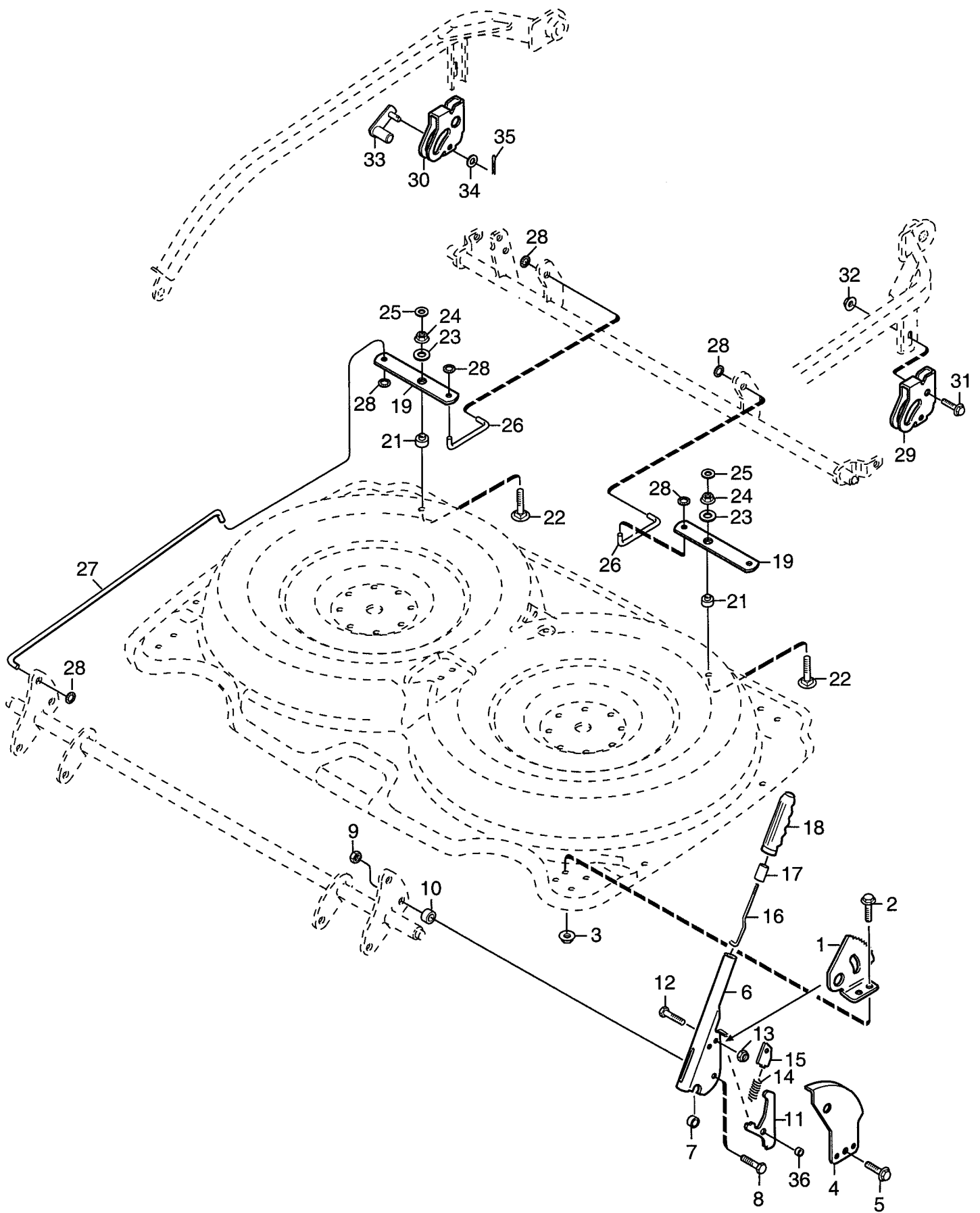
Utgåva Issue 2006- 11		Bildnr Picture No 1313A		PARK KLIPPAGGREGAT 92M TRANSMISSION		PARK MOWER DECK 92M TRANSMISSION		Sida Page 184	
Pos. Fig.	Antal/Quantity				Art nr Part No	Benämning	Description	Sats Kit	Anmärkning Notes
	2939	2933							
1	1	1			1134- 5229- 01	Transmissionsplatta.....	Transmission plate.....		L = 25 mm



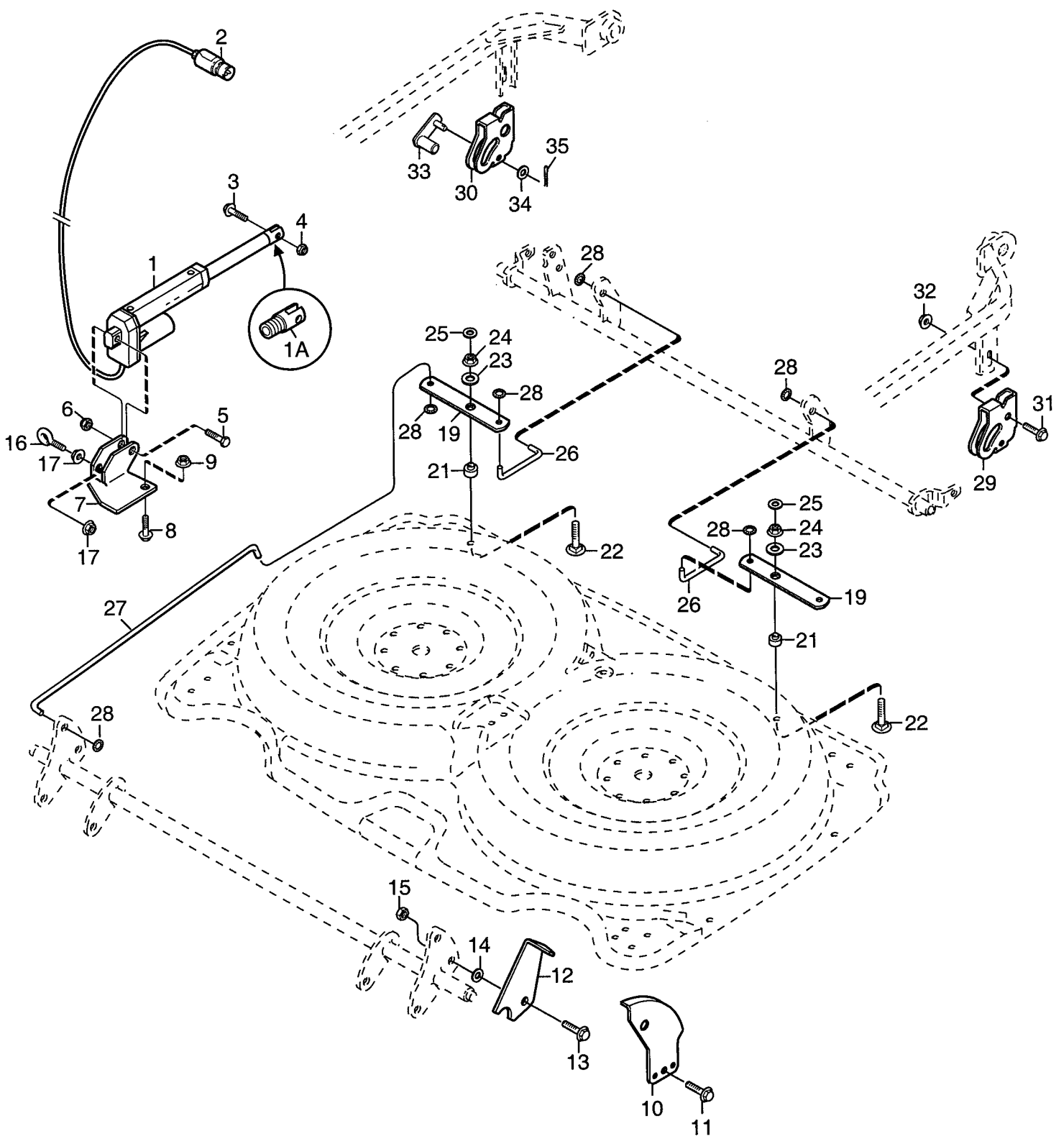
Utgåva Issue 2006- 11		Bildnr Picture No 1303		PARK KLIPPAGGREGAT 92M KNIVAR		PARK MOWER DECK 92M BLADES		Sida Page 186	
Pos. Fig.	Antal/Quantity				Art nr Part No	Benämning	Description	Sats Kit	Anmärkning Notes
	2933 2939								
1	2				1134- 5049- 01 Lagerbox kpl.....	Bearing box assy.....			
2	1				1134- 3725- 04 • Distans	• Spacer.....			
3	2				9549- 0020- 00 • Kullager	• Ball bearing			
4	8				9997- 0865- 12 Skruv	Screw			
5	8				9739- 0831- 22 Mutter	Nut			
6	2				1134- 5052- 04 Knivaxel	Blade shaft			
7	2				1134- 3725- 04 Distans	Spacer.....			
8	2				1134- 5130- 01 Skyddsbricka	Bearing cover.....			
11	4				9997- 0820- 16 Skruv	Screw			
12	4				9747- 0831- 02 Mutter	Lock nut			
13	1				1134- 9073- 01 Knivbalk kpl	Blade bar assy.....			
14	2				1134- 9074- 01 • Knivsats kpl	• Blade kit assy			
15	1				1134- 9054- 01 •• Brytbultsats	•• Shear bolt kit			
16	2				1134- 4479- 01 •• Ansatsbult.....	•• Shoulder bolt.....			
17	2				9712- 0831- 02 •• Låsmutter	•• Lock nut			
								Sats 2 st/kit of 2 2 knivar/2 blade tips 6 bultar/6 bolts+nuts	



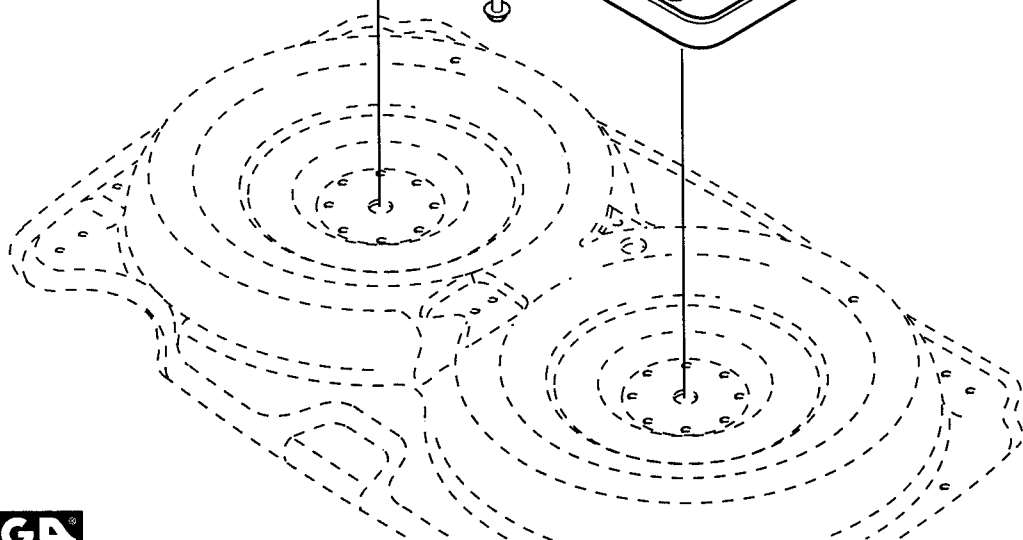
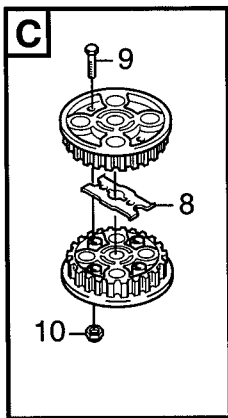
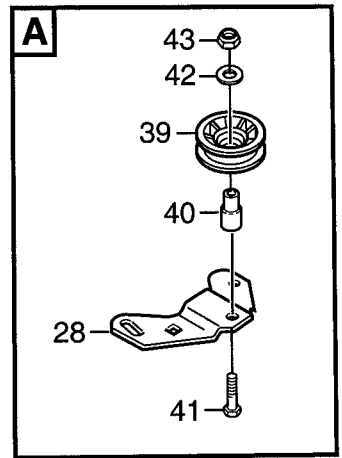
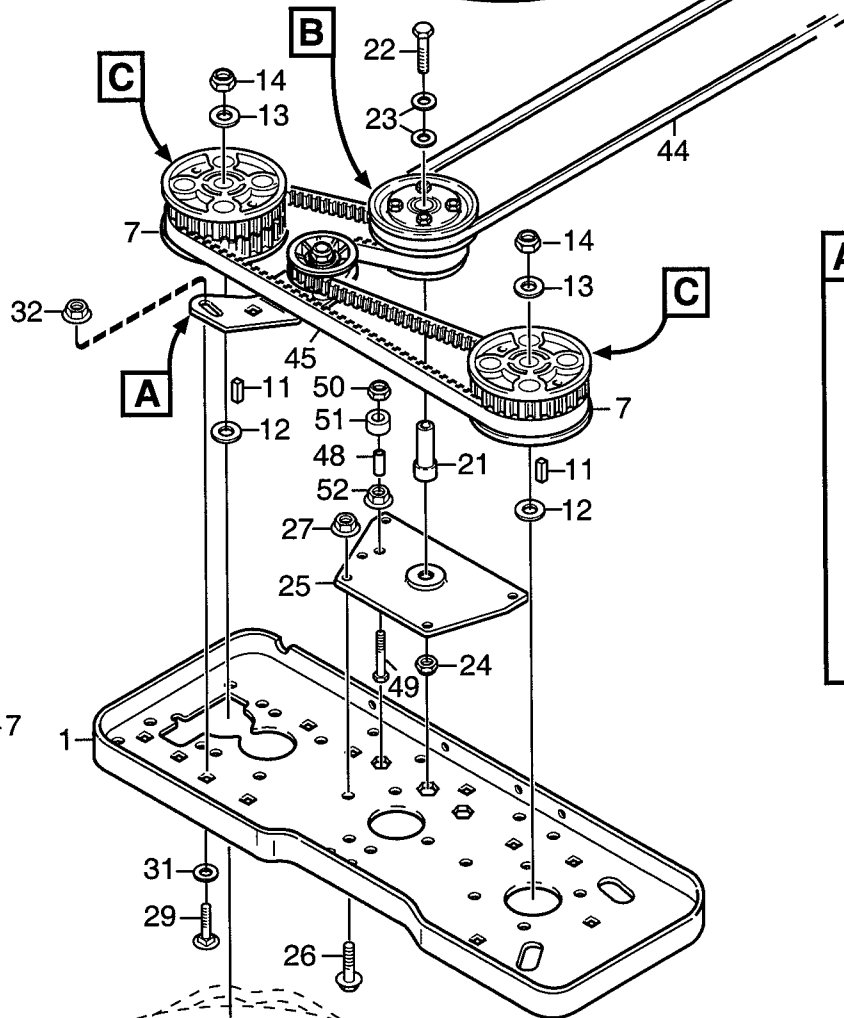
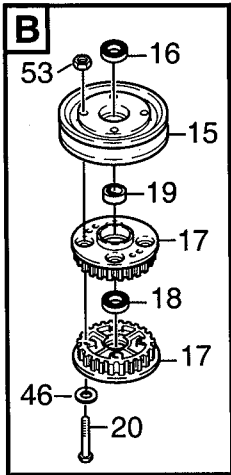
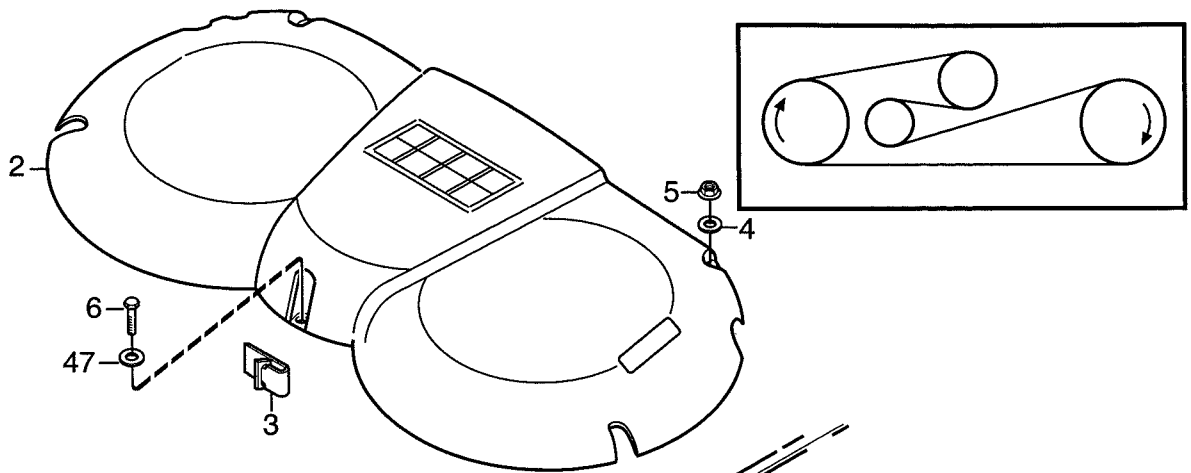
Utgåva Issue 2006- 11		Bildnr Picture No 1041E		PARK KLIPPAGGREGAT 107M RAM		PARK MOWER DECK 107M FRAME		Sida Page 188	
Pos. Fig.	Antal/Quantity				Art nr Part No	Benämning	Description	Sats Kit	Anmärkning Notes
	2927 2935 -49	2924 2935 -39							
1	1	1			1134-5187-01	Kåpa	Casing		
2	2	2			1134-4323-01	Ledplåt	Guide plate		
3	4	4			9897-0616-16	Vagnsbult	Carriage bolt		
4	4	4			9739-0631-22	Mutter	Nut		
5	1	1			1134-4320-06	Lyftöra	Lift bracket		
6	1	1			9959-0820-16	Skruv	Screw		
7	1	1			9739-0831-22	Mutter	Nut		
10	1	1			1134-4905-01	Ledskena	Guide bar		
11	2	2			9838-9530-12	Skruv	Screw		
12	1	1			1134-4890-01	Framaxel	Front axle		
13	1	1			1134-9024-01	Lager	Bearing		Sats 4 st/kit of 4
14	1	1			1134-4292-01	Lagerfäste	Bearing holder		
15	1	1			1134-4292-02	Lagerfäste	Bearing holder		
16	4	4			9959-0816-16	Skruv	Screw		
17	4	4			9739-0831-22	Mutter	Nut		
18	2	2			1134-4284-01	Hjul	Wheel		
19	4	4			1134-4319-01	Lager	Bearing		
20	2	2			1134-4318-01	Hylsa	Wheel axle		
21	2	2			9997-0812-02	Skruv	Screw		
22	2	2			9739-0831-22	Mutter	Nut		
23	1	1			1134-5892-01	Bakaxel	Rear axle		
24	1	1			1134-9024-01	Lager	Bearing		Sats 4 st/kit of 4
25	2	2			1134-4689-01	Stöd	Support		
26	2	2			9959-0616-16	Skruv	Screw		
27	2	2			9747-0631-02	Låsmutter	Lock nut		
28	1	1			1134-4299-01	Fäste- vä	Wheel attachment- LH		
29	1	1			1134-4299-02	Fäste- hö	Wheel attachment- RH		
30	4	4			9959-0816-16	Skruv	Screw		
31	4	4			9739-0831-22	Mutter	Nut		
32	2	2			1134-3434-01	Rulle	Roller		
33	2	2			1134-0041-05	Hylsa	Bushing		
35	2	2			9897-1060-12	Skruv	Screw		
36	2	2			9739-1031-22	Mutter	Nut		
37	1				1134-4324-01	Aggregatsarm- vä	Mower deck arm- L.H.		
38	1				1134-4324-02	Aggregatsarm- hö	Mower deck arm- R.H.		
39	2	2			9997-1016-16	Skruv	Screw		
40	2	2			9699-0030-02	Planbricka	Flat washer		10 x 26 x 2.0
41	2	2			9699-0104-02	Bricka	Washer		17 x 30 x 3.0
42	1	1			1134-4688-02	Lyftfjäder kpl	Lift spring assy		Inkl. pos 43 - 49
43	1	1			1134-4574-01	• Fjäder kpl	• Spring assy		
44	1	1			1134-4577-01	• Pendel	• Spring pivot		
45	1	1			9997-0825-16	• Skruv	• Screw		
46	1	1			9747-0831-02	• Mutter	• Lock nut		
47	1	1			9997-0835-12	• Skruv	• Screw		
48	1	1			9747-0831-02	• Mutter	• Lock nut		
49	2	2			1134-4481-01	• Vingmutter	• Wing nut		
52	2	2			1134-4745-01	Distansbricka	Spacer washer		
53		1			1134-5899-01	Aggregatsarm- vä	Mower deck arm- LH		
54		1			1134-5899-02	Aggregatsarm- hö	Mower deck arm- RH		
55		2			1134-5686-02	• Lagerbussning	• Bearing bush		
56		1			9501-0502-00	• Smörjnippel	• Grease joint		
57		1			1134-5952-01	Kedja	Chain		
97	2	2			9402-3523-01	Sidodekal	Side decal		
98	1	1			9402-3124-00	Varn.decal "Danger"	Warn. label "Danger"		US, CA
99		1			8211-0543-04	Bruksanvisning	Owner's manual		Ej ill/not ill.
99	1				8211-3036-06	Bruksanvisning	Owner's manual		Ej ill/not ill.



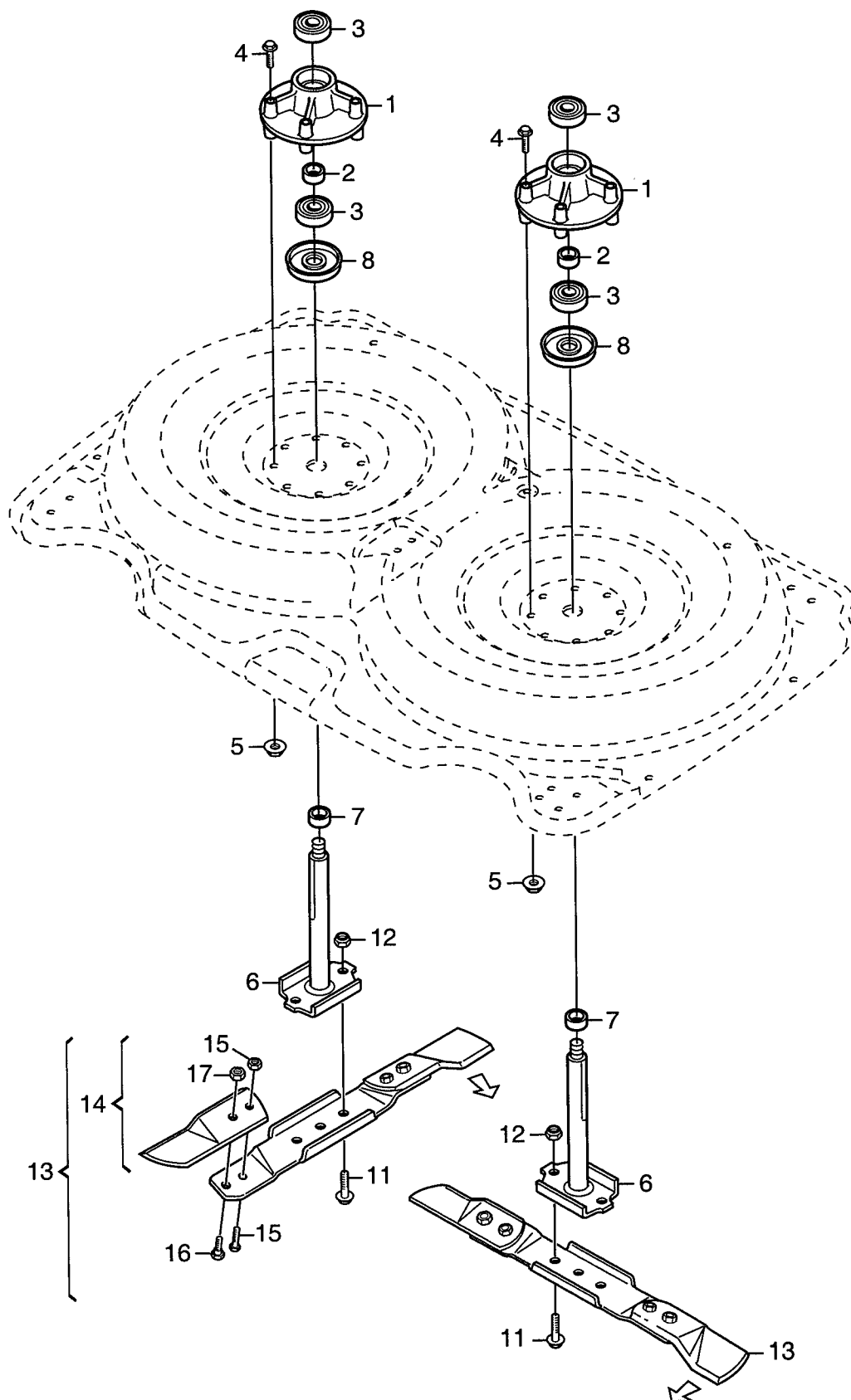
Utgåva Issue 2006- 11		Bildnr Picture No 1042C		PARK KLIPPAGGREGAT 107M REGLAGE		PARK MOWER DECK 107M CONTROLS		Sida Page 190	
Pos. Fig.	Antal/Quantity				Art nr Part No	Benämning	Description	Sats Kit	Anmärkning Notes
	2924	2927							
1	1				1134-4290-01	Höjdsegment	Height adj. quadrant.....		Inkl. pos 11 - 18, 36
2	2				9959-0816- 16	Skruv	Screw		
3	2				9739-0831-22	Mutter.....	Nut		
4	1				1134-4291-03	Höjdisningsplåt.....	Height adjust plate		
5	1				9945-0816- 16	Skruv	Screw		
6	1				1134-5215-01	Höjdinställn.spak kpl	Height adj.lever assy		
7	1				1134-2427-01	Distans	Spacer.....		
8	1				9997-0840- 16	Skruv	Screw		
9	1				9747-0831-02	Mutter.....	Lock nut.....		
10	1				1134-3113-03	Distans	Spacer.....		
11	1				1134-3010-02	• Låssegment	• Locking quadrant		
12	1				9997-0620- 16	• Skruv	• Screw		
13	1				9747-0631-02	• Låsmutter	• Lock nut.....		
14	1				1134-3262-01	• Tryckfjäder	• Compression spring.....		
15	1				1134-3009-01	• Låskil	• Locking key		
16	1				1134-3041-01	• Reglagestång.....	• Control rod		
17	1				1134-3051-01	• Spärrknapp	• Locking knob		
18	1				9406-0006-00	• Handtag	• Handle.....		
19	2				1134-4296-02	Länkarm	Pivot arm		
21	2				1134-4298-02	Distans	Spacer.....		
22	2				9897-0850-12	Skruv	Screw		
23	2				9699-0028-02	Planbricka.....	Flat washer.....		
24	2				9747-0831-02	Mutter.....	Lock nut		
25	2				9699-0056-02	Planbricka.....	Flat washer.....		
26	2				1134-4894-04	Tryckstång	Push rod		
27	2				1134-4294-02	Tryckstång	Push rod		
28	8				9675-0012-02	Starlock	Locking washer		
29	1				1134-4304-01	Justerplåt- vä	Adjusting plate- LH.....		
30	1				1134-4304-02	Justerplåt- hö.....	Adjusting plate- RH		
31	2				9959-0816- 16	Skruv	Screw		
32	2				9739-0831-22	Mutter.....	Nut		
33	2				1134-4307-01	Låshake	Catch		
34	2				9699-0025-02	Planbricka.....	Washer		
35	2				9599-0054-02	Saxpinne.....	Cotter pin		
36	1				1134-5114-01	• Distans	• Spacer.....		



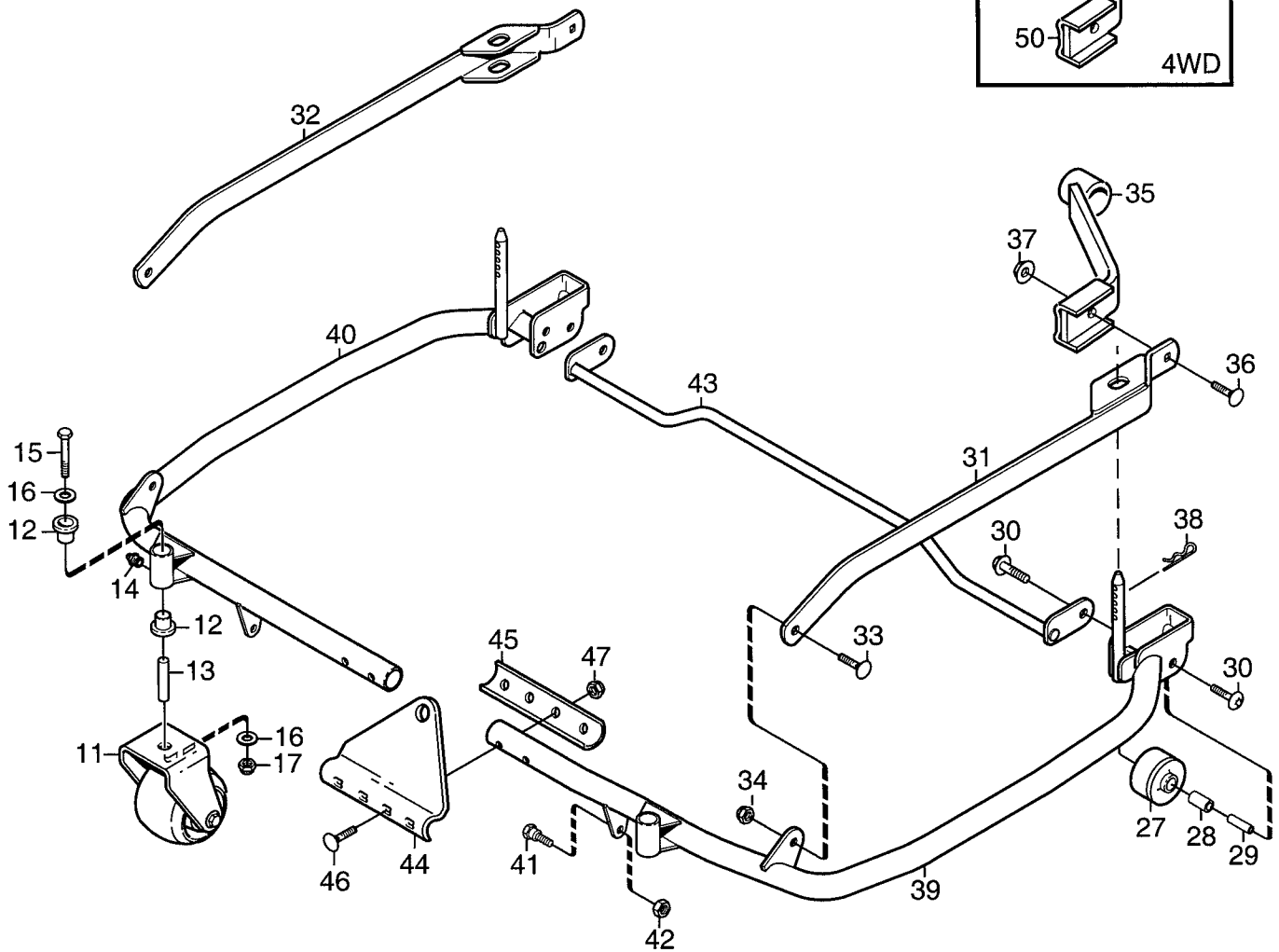
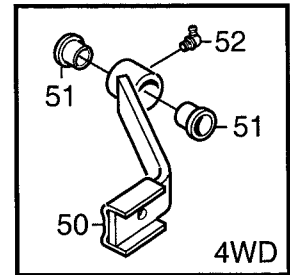
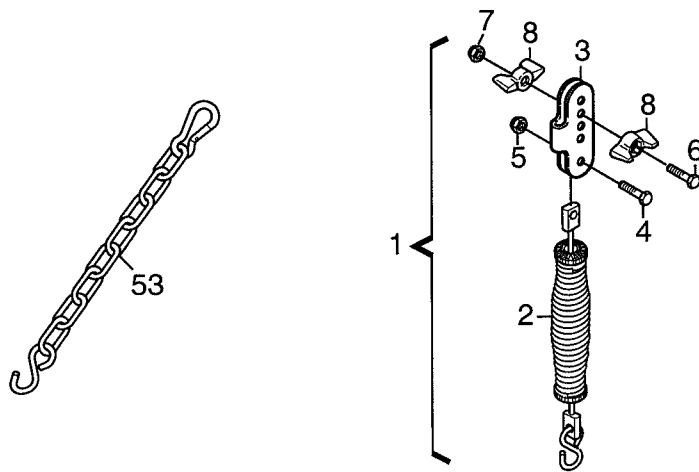
Utgåva Issue 2006- 11		Bildnr Picture No 1310A		PARK KLIPPAGGREGAT 107M EL. REGLAGE		PARK MOWER DECK 107M EL. CONTROL		Sida Page 192	
Pos. Fig.	Antal/Quantity				Art nr Part No	Benämning	Description	Sats Kit	Anmärkning Notes
	2935								
1	1				1134- 4884- 01	Ställdon	Electric lifter		
1A	1				1139- 0005- 01	• Kolvstångsända	• Rod end		
2	1				1134- 4057- 01	• Hankontakt	• Male terminal		
3	1				9959- 0830- 16	Skruv	Screw		
4	1				9747- 0831- 02	Mutter	Lock nut		
5	1				9997- 0840- 16	Skruv	Screw		
6	1				9747- 0831- 02	Mutter	Lock nut		
7	1				1134- 4877- 01	Fäste	Bracket		
8	2				9959- 0820- 16	Skruv	Screw		
9	2				9739- 0831- 22	Mutter	Nut		
10	1				1134- 4291- 03	Höjdvisningsplåt	Height adjust plate		
11	1				9945- 0816- 16	Skruv	Screw		
12	1				1134- 4883- 01	Visare	Pointer		
13	1				9959- 0830- 16	Skruv	Screw		
14	1				9699- 0056- 02	Planbricka	Flat washer		
15	2				9739- 0831- 22	Mutter	Nut		
16	1				1134- 2138- 01	Skruvögla	Eye bolt		
17	2				9739- 0831- 22	Mutter	Nut		
19	2				1134- 4296- 02	Länkarm	Pivot arm		
21	2				1134- 4298- 02	Distans	Spacer		
22	2				9897- 0850- 12	Skruv	Screw		
23	2				9699- 0028- 02	Planbricka	Flat washer		
24	2				9747- 0831- 02	Mutter	Lock nut		
25	2				9699- 0056- 02	Planbricka	Flat washer		
26	2				1134- 4894- 04	Tryckstång	Push rod		
27	2				1134- 4294- 02	Tryckstång	Push rod		
28	8				9675- 0012- 02	Starlock	Locking washer		
29	1				1134- 4304- 01	Justerplåt- vä	Adjusting plate- LH		
30	1				1134- 4304- 02	Justerplåt- hö	Adjusting plate- RH		
31	2				9959- 0816- 16	Skruv	Screw		
32	2				9739- 0831- 22	Mutter	Nut		
33	2				1134- 4307- 01	Låshake	Catch		
34	2				9699- 0025- 02	Planbricka	Washer		
35	2				9599- 0054- 02	Saxpinne	Cotter pin		



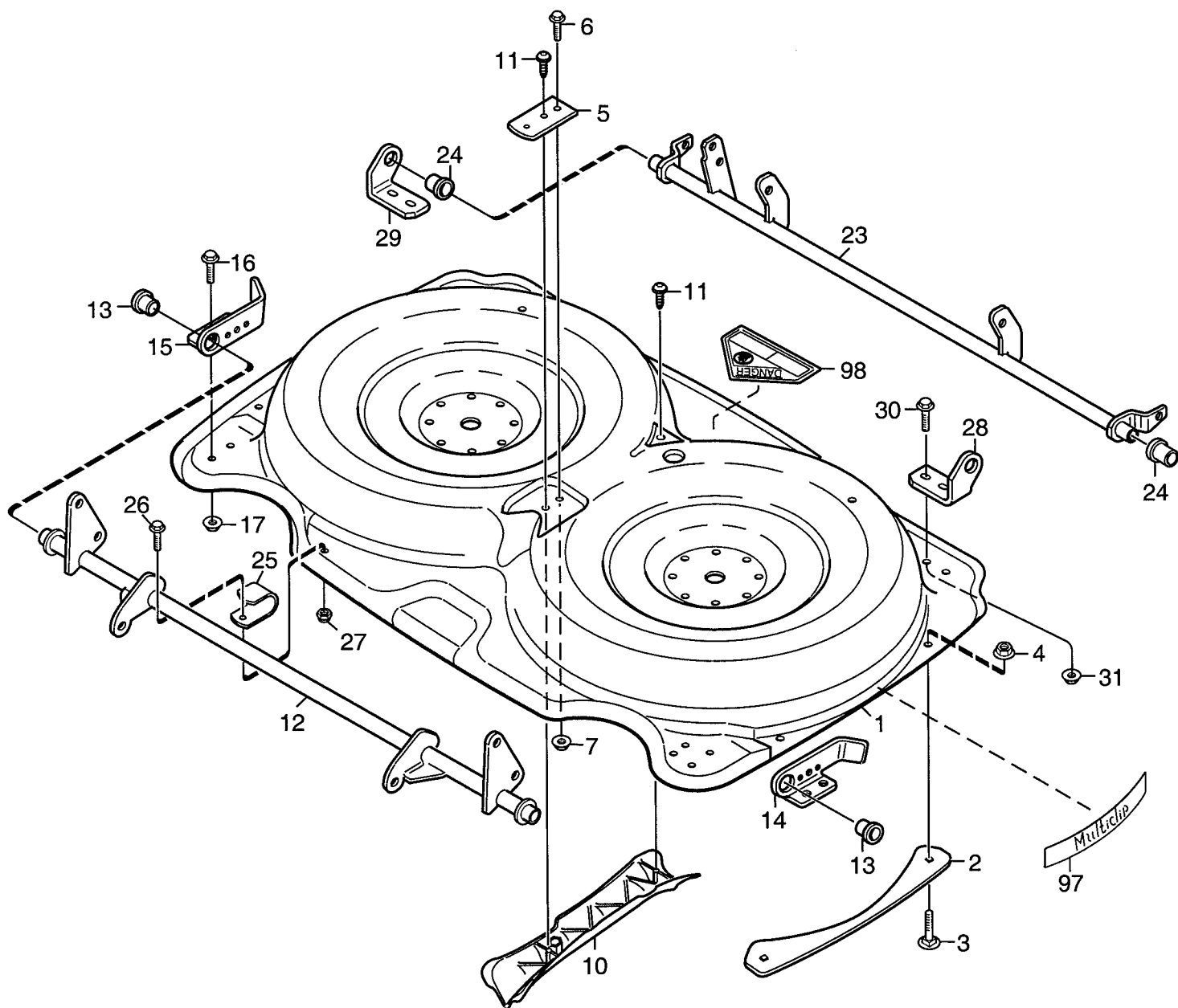
Utgåva Issue 2006- 11		Bildnr Picture No 1312		PARK KLIPPAGGREGAT 107M TRANSMISSION		PARK MOWER DECK 107M TRANSMISSION		Sida Page 194	
Pos. Fig.	Antal/Quantity				Art nr Part No	Benämning	Description	Sats Kit	Anmärkning Notes
	2927 2935 -49	2924 2935 -39							
1	1	1			1134-5229-01	Transmissionsplatta.....	Transmission plate.....		L = 25 mm <



Utgåva Issue 2006- 11		Bildnr Picture No 1305		PARK KLIPPAGGREGAT 107M KNIVAR		PARK MOWER DECK 107M BLADES		Sida Page 196	
Pos. Fig.	Antal/Quantity			Art nr Part No	Benämning	Description	Sats Kit	Anmärkning Notes	
	2924 2927 2935								
1	2			1134-5049-01	Lagerbox kpl.....	Bearing box assy.....		Sats 2 st/Kit of 2 2 knivar/2 blade tips 6 bultar/6 bolts+nuts	
2	1			1134-3725-04	• Distans	• Spacer			
3	2			9549-0020-00	• Kullager	• Ball bearing			
4	8			9997-0865-12	Skruv	Screw			
5	8			9739-0831-22	Mutter	Nut			
6	2			1134-5052-04	Knivaxel	Blade shaft			
7	2			1134-3725-04	Distans	Spacer			
8	2			1134-5130-01	Skyddsbricka	Bearing cover			
11	4			9997-0820-16	Skruv	Screw			
12	4			9747-0831-02	Mutter	Lock nut			
13	1			1134-9072-01	Knivbalk kpl	Blade bar assy			
14	1			1134-9074-01	• Knivsats kpl	• Blade kit assy			
15	1			1134-9054-01	•• Brytbultsats	•• Shear bolt kit			
16	2			1134-4479-01	•• Ansatsbult	•• Shoulder bolt			
17	2			9712-0831-02	•• Låsmutter	•• Lock nut			



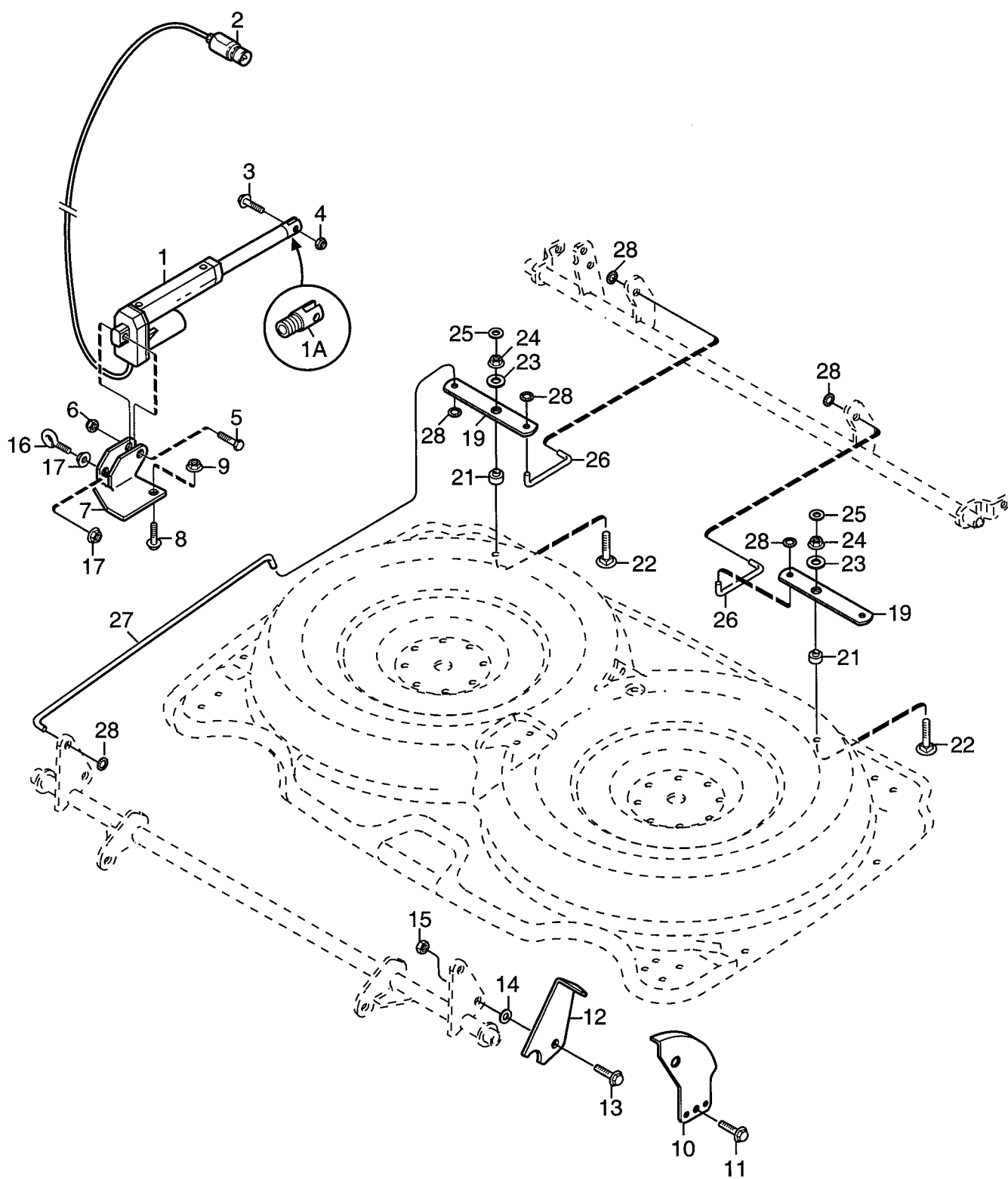
Utgåva Issue 2006- 11		Bildnr Picture No 1545B		PARK KLIPPAGGREGAT 107M HD RAM		PARK MOWER DECK 107M HD FRAME		Sida Page 198	
Pos. Fig.	Antal/Quantity				Art nr Part No	Benämning	Description	Sats Kit	Anmärkning Notes
	2951 2952	2950 2953							
1	1	1			1134-4688-02	Lyftfjäder kpl.....	Lift spring assy		Inkl. pos 2 - 8
2	1	1			1134-4574-01	• Fjäder kpl	• Spring assy		
3	1	1			1134-4577-01	• Pendel.....	• Spring pivot		
4	1	1			9997-0825-16	• Skruv	• Screw		
5	1	1			9747-0831-02	• Mutter.....	• Lock nut		Sats 4 st/kit of 4
6	1	1			9997-0835-12	• Skruv	• Screw		
7	1	1			9747-0831-02	• Mutter.....	• Lock nut		
8	2	2			1134-4481-01	• Vingmutter.....	• Wing nut		
11	2	2			1134-5884-01	Pivothjul	Pivot wheel		Sats 4 st/kit of 4
12	1	1			1134-9024-01	Lager	Bearing		
13	2	2			1134-5210-02	Distans	Spacer		
14	2	2			9501-0500-00	Smörjnippel	Grease joint		
15	2	2			9997-1090-12	Skruv	Screw		Sats 4 st/kit of 4
16	4	4			9699-0030-02	Planbricka	Flat washer		
17	2	2			9747-1031-02	Låsmutter	Lock nut		
27	2	2			1134-3434-01	Rulle	Roller		
28	2	2			1134-0041-04	Hylsa	Bushing		Sats 4 st/kit of 4
29	2	2			1134-5253-01	Axel	Shaft		
30	4	4			9894-0615-16	Skruv	Screw		
31	1	1			1134-5202-01	Aggregatsarm- vä	Mower deck arm- LH		
32	1	1			1134-5202-02	Aggregatsarm- hö	Mower deck arm- RH		Sats 4 st/kit of 4
33	2	2			9898-1035-16	Skruv	Screw		
34	2	2			9747-1031-02	Låsmutter	Lock nut		
35	2	2			1134-3710-01	Redskapsfäste	Tool attachment		
36	2	2			9898-1035-16	Skruv	Screw		Sats 4 st/kit of 4
37	2	2			9739-1031-22	Mutter.....	Nut		
38	2	2			9598-0003-02	Låsnål	Spring pin		
39	1	1			1134-5198-01	Ram- vä	Frame- LH		
40	1	1			1134-5198-02	Ram- hö	Frame- RH		Sats 4 st/kit of 4
41	2	2			1134-0240-00	Ansatsskruv	Shoulder screw		
42	2	2			9747-0831-02	Mutter.....	Lock nut		
43	1	1			1134-5184-01	Stag	Rod		
44	1	1			1134-5211-01	Fjäderfäste.....	Spring attachment.....		Sats 4 st/kit of 4
45	1	1			1134-5217-01	Överfall	Tube connection.....		
46	4	4			9897-0850-12	Skruv	Screw		
47	4	4			9748-0831-02	Låsmutter	Lock nut		
50		2			1134-5886-01	Redskapsfäste kpl.....	Tool attachment assy		Inkl. pos 51 - 52
51		2			1134-5686-01	• Lagerbussning	• Bearing bush		
52		1			9501-0502-00	• Smörjnippel	• Grease joint		
53		1			1134-5952-01	Kedja	Chain		
99		1			8211-0543-04	Bruksanvisning	Owner's manual		Ej ill/not ill. Ej ill/not ill.
99	1				8211-3042-02	Bruksanvisning	Owner's manual		



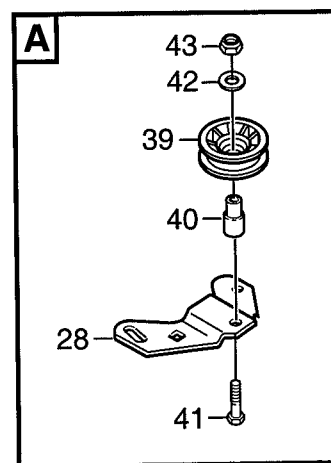
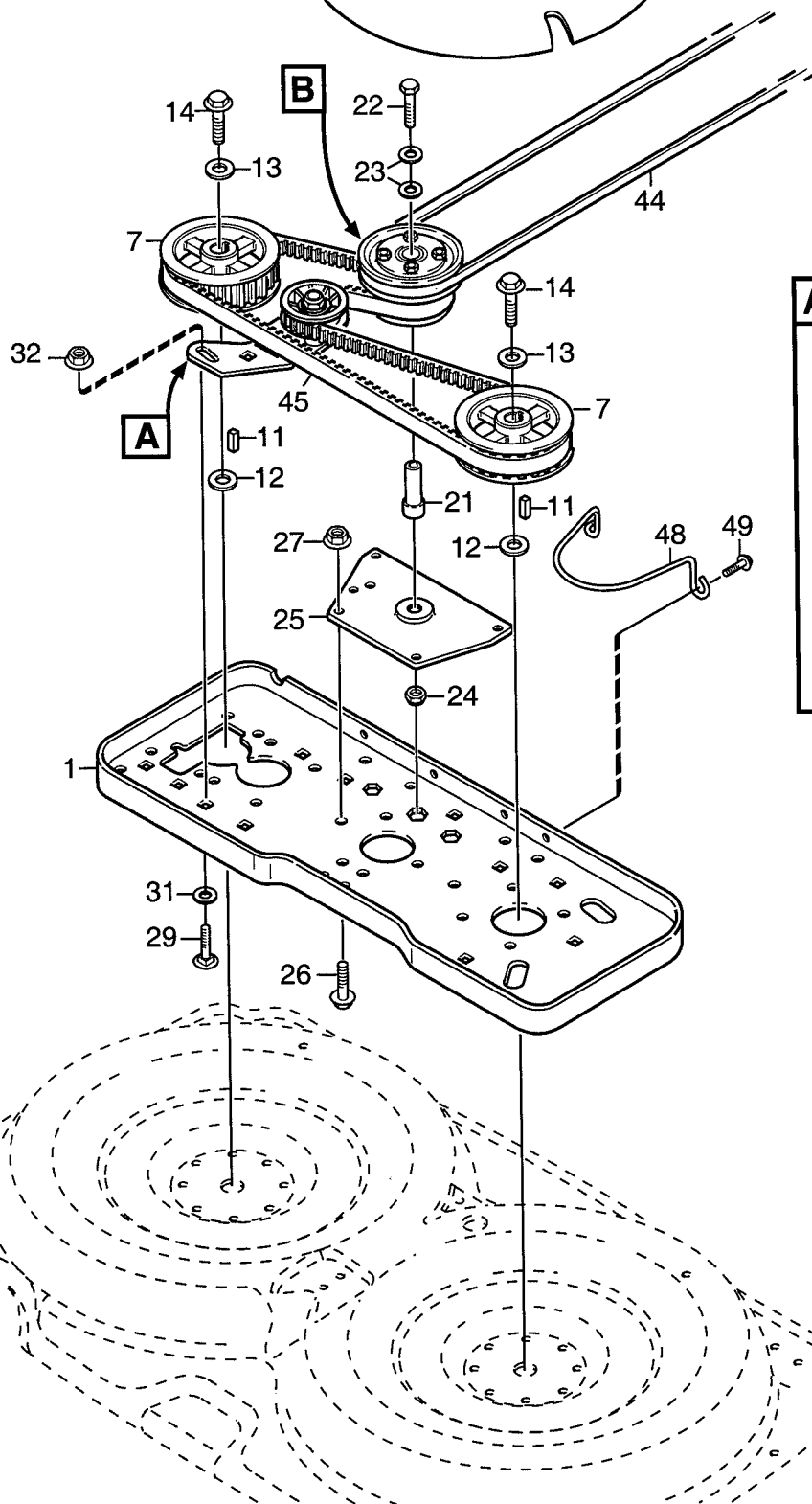
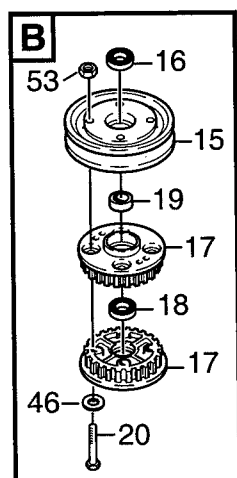
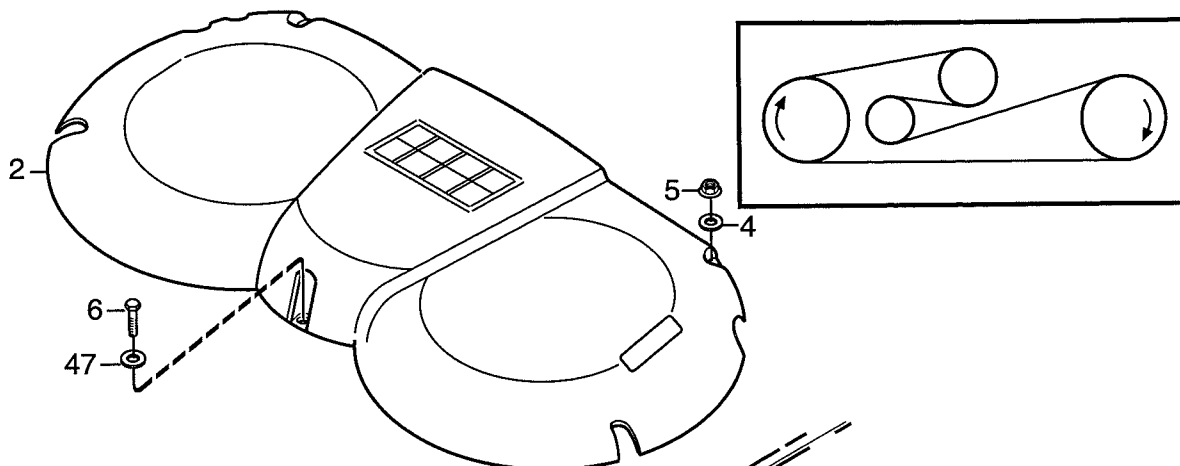
Utgåva Issue 2006- 11		Bildnr Picture No 1546A		PARK KLIPPAGGREGAT 107M HD KÅPA		PARK MOWER DECK 107M HD CASING		Sida Page 200	
Pos. Fig.	Antal/Quantity				Art nr Part No	Benämning	Description	Sats Kit	Anmärkning Notes
	2950								
	2951								
	2952								
	2953								
1	1				1134- 5187- 01	Kåpa	Casing		
2	2				1134- 4323- 01	Ledplåt	Guide plate		
3	4				9897- 0616- 16	Vagnsbult	Carriage bolt		
4	4				9739- 0631- 22	Mutter	Nut		
5	1				1134- 5181- 01	Fäste	Bracket		
6	1				9959- 0820- 16	Skruv	Screw		
7	1				9739- 0831- 22	Mutter	Nut		
10	1				1134- 4905- 01	Ledskena	Guide bar		
11	2				9838- 9530- 12	Skruv	Screw		
12	1				1134- 5205- 01	Framaxel	Front axle		
13	1				1134- 9024- 01	Lager	Bearing		Sats 4 st/kit of 4
14	1				1134- 5218- 01	Lagerfäste- vä	Bearing holder- LH		
15	1				1134- 5218- 02	Lagerfäste- hö	Bearing holder- RH		
16	4				9959- 0816- 16	Skruv	Screw		
17	4				9739- 0831- 22	Mutter	Nut		
23	1				1134- 5892- 01	Bakaxel	Rear axle		
24	1				1134- 9024- 01	Lager	Bearing		Sats 4 st/kit of 4
25	4				1134- 4689- 01	Stöd	Support		
26	4				9959- 0616- 16	Skruv	Screw		
27	4				9747- 0631- 02	Låsmutter	Lock nut		
28	1				1134- 5180- 01	Fäste- vä	Bracket- LH		
29	1				1134- 5180- 02	Fäste- hö	Bracket- RH		
30	4				9959- 0816- 16	Skruv	Screw		
31	4				9739- 0831- 22	Mutter	Nut		
97	2				9402- 3523- 01	Sidodekal	Side decal		
98	1				9402- 3124- 00	Varn.decal "Danger"	Warn. label "Danger"		US, CA



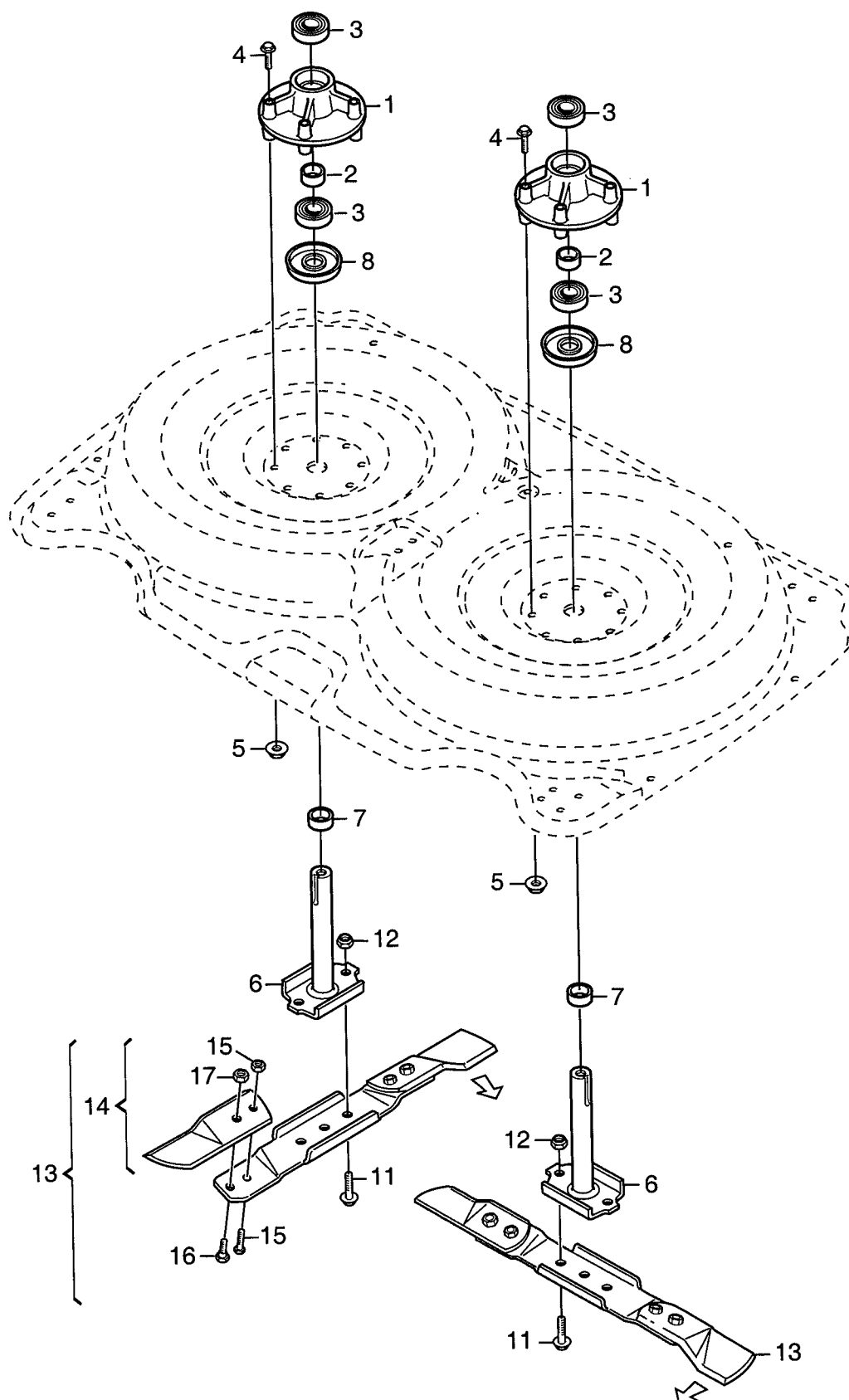
Utgåva Issue 2006- 11		Bildnr Picture No 1549		PARK KLIPPAGGREGAT 107M HD REGLAGE		PARK MOWER DECK 107M HD CONTROLS		Sida Page 202	
Pos. Fig.	Antal/Quantity				Art nr Part No	Benämning	Description	Sats Kit	Anmärkning Notes
	2950 2951								
1	1				1134-5249-01	Höjdsegment	Height adj. quadrant.....		Inkl. pos 11 - 18, 36
2	2				9959-0816-16	Skruv	Screw		
3	2				9739-0831-22	Mutter	Nut		
4	1				1134-4291-03	Höjdvisningsplåt	Height adjust plate		
5	1				9945-0816-16	Skruv	Screw		
6	1				1134-5215-01	Höjdinställn.spak kpl	Height adj.lever assy		
7	1				1134-2427-01	Distans	Spacer		
8	1				9997-0840-16	Skruv	Screw		
9	1				9747-0831-02	Mutter	Lock nut		
10	1				1134-3113-03	Distans	Spacer		
11	1				1134-3010-02	• Låssegment	• Locking quadrant		
12	1				9997-0620-16	• Skruv	• Screw		
13	1				9747-0631-02	• Låsmutter	• Lock nut		
14	1				1134-3262-01	• Tryckfjäder	• Compression spring		
15	1				1134-3009-01	• Låskil	• Locking key		
16	1				1134-3041-01	• Reglagestång	• Control rod		
17	1				1134-3051-01	• Spärrknapp	• Locking knob		
18	1				9406-0006-00	• Handtag	• Handle		
19	2				1134-4296-02	Länkarm	Pivot arm		
21	2				1134-4298-02	Distans	Spacer		
22	2				9897-0850-12	Skruv	Screw		
23	2				9699-0028-02	Planbricka	Flat washer		
24	2				9747-0831-02	Mutter	Lock nut		
25	2				9699-0056-02	Planbricka	Flat washer		
26	2				1134-4894-04	Tryckstång	Push rod		
27	2				1134-4294-02	Tryckstång	Push rod		
28	8				9675-0012-02	Starlock	Locking washer		
36	1				1134-5114-01	• Distans	• Spacer		



Utgåva Issue 2006- 11		Bildnr Picture No 1550		PARK KLIPPAGGREGAT 107M HD EL. REGLAGE		PARK MOWER DECK 107M HD EL. CONTROL		Sida Page 204	
Pos. Fig.	Antal/Quantity				Art nr Part No	Benämning	Description	Sats Kit	Anmärkning Notes
	2952 2953								
1	1				1134-4884-01	Ställdon	Electric lifter		
1A	1				1139-0005-01	• Kolvstångsända	• Rod end		
2	1				1134-4057-01	• Hankontakt	• Male terminal		
3	1				9959-0830-16	Skruv	Screw		
4	1				9747-0831-02	Mutter	Lock nut		
5	1				9997-0840-16	Skruv	Screw		
6	1				9747-0831-02	Mutter	Lock nut		
7	1				1134-4877-01	Fäste	Bracket		
8	2				9959-0820-16	Skruv	Screw		
9	2				9739-0831-22	Mutter	Nut		
10	1				1134-4291-03	Höjdvisningsplåt	Height adjust plate		
11	1				9945-0816-16	Skruv	Screw		
12	1				1134-4883-01	Visare	Pointer		
13	1				9959-0830-16	Skruv	Screw		
14	1				9699-0056-02	Planbricka	Flat washer		
15	2				9739-0831-22	Mutter	Nut		
16	1				1134-2138-01	Skruvögla	Eye bolt		
17	2				9739-0831-22	Mutter	Nut		
19	2				1134-4296-02	Länkarm	Pivot arm		
21	2				1134-4298-02	Distans	Spacer		
22	2				9897-0850-12	Skruv	Screw		
23	2				9699-0028-02	Planbricka	Flat washer		
24	2				9747-0831-02	Mutter	Lock nut		
25	2				9699-0056-02	Planbricka	Flat washer		
26	2				1134-4894-04	Tryckstång	Push rod		
27	2				1134-4294-02	Tryckstång	Push rod		
28	8				9675-0012-02	Starlock	Locking washer		



Utgåva Issue		Bildnr Picture No		PARK KLIPPAGGREGAT 107M HD TRANSMISSION		PARK MOWER DECK 107M HD TRANSMISSION		Sida Page	
2006- 11		1547						206	
Pos. Fig.	Antal/Quantity				Art nr Part No	Benämning	Description	Sats Kit	Anmärkning Notes
	2951 2952	2950 2953							
1	1	1			1134- 5229- 01	Transmissionsplatta.....	Transmission plate.....		6 x 6 x 16 mm



Utgåva Issue 2006- 11		Bildnr Picture No 1548		PARK KLIPPAGGREGAT 107M HD KNIVAR		PARK MOWER DECK 107M HD BLADES		Sida Page 208	
Pos. Fig.	Antal/Quantity				Art nr Part No	Benämning	Description	Sats Kit	Anmärkning Notes
	2950								
	2951								
	2952								
	2953								
1	2				1134-5049-02 Lagerbox kpl.....	Bearing box assy.....			
2	1				1134-5124-01 • Distans	• Spacer			
3	2				9549-0056-01 • Kullager	• Ball bearing			
4	8				9997-0865-12 Skruv	Screw			
5	8				9739-0831-22 Mutter	Nut			
6	2				1134-5126-01 Knivaxel	Blade shaft			
7	2				1134-5124-01 Distans	Spacer			
8	2				1134-5130-02 Skyddsbricka	Bearing cover			
11	4				9997-0820-16 Skruv	Screw			
12	4				9747-0831-02 Mutter	Lock nut			
13	1				1134-9072-01 Knivbalk kpl	Blade bar assy			
14	1				1134-9074-01 • Knivsats kpl	• Blade kit assy			
15	1				1134-9054-01 •• Brytbultsats	•• Shear bolt kit			
16	2				1134-4479-01 •• Ansatsbult	•• Shoulder bolt			
17	2				9712-0831-02 •• Låsmutter	•• Lock nut			
								Sats 2 st/Kit of 2 2 knivar/2 blade tips 6 bultar/6 bolts+nuts	