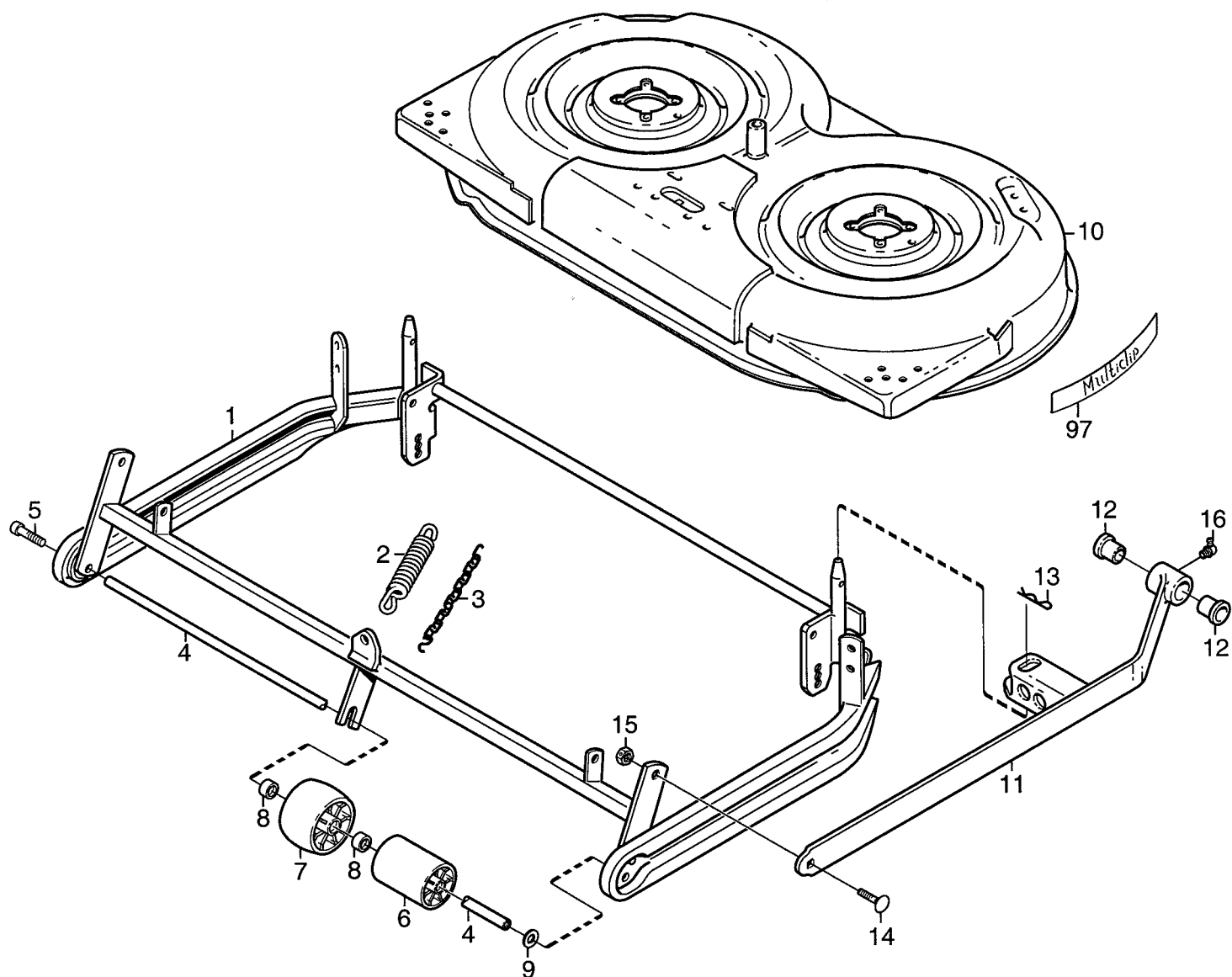


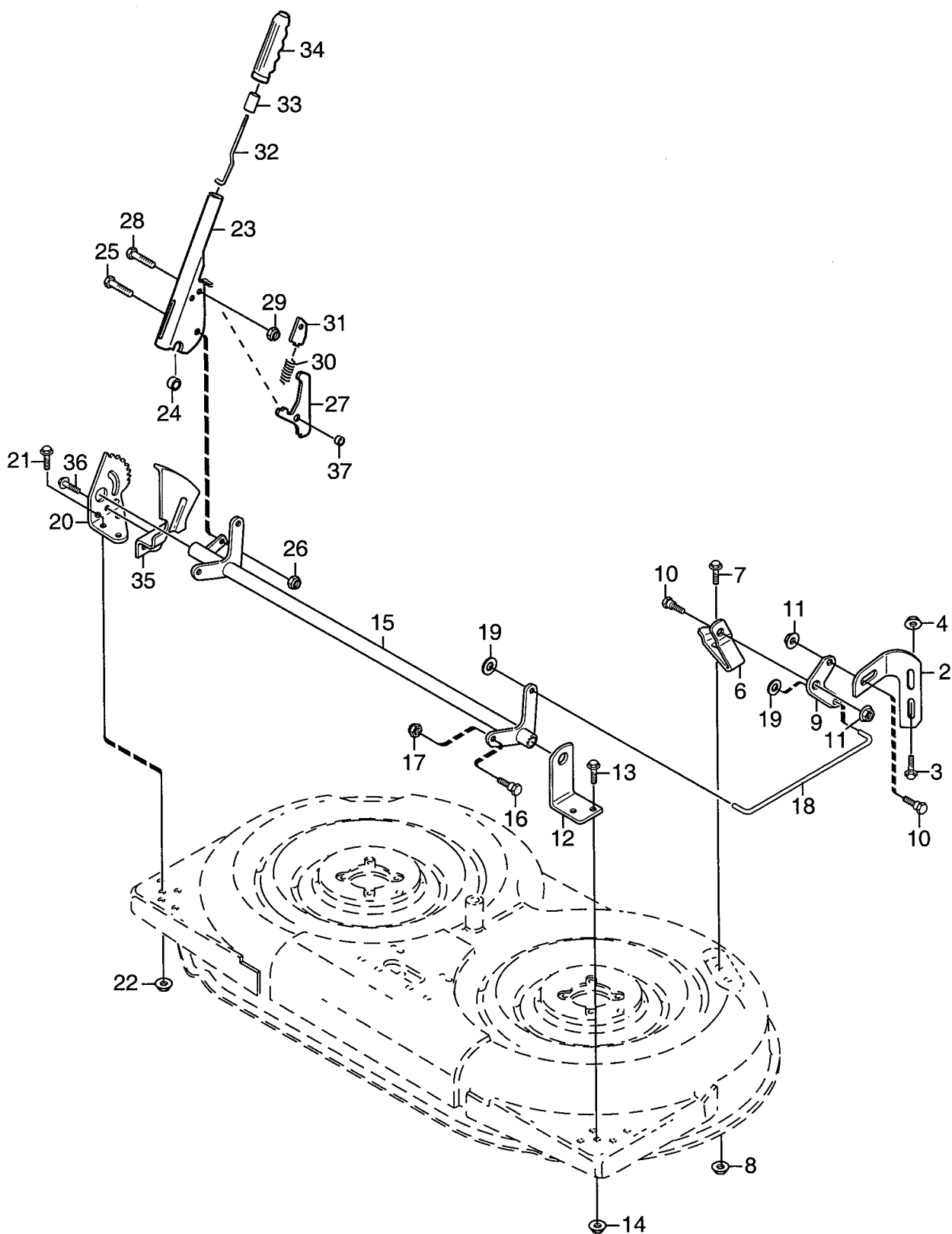
Genuine Spare Parts



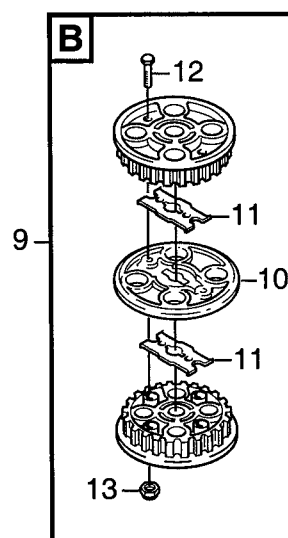
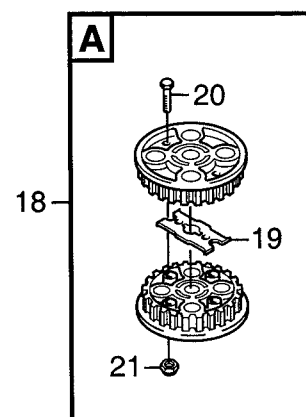
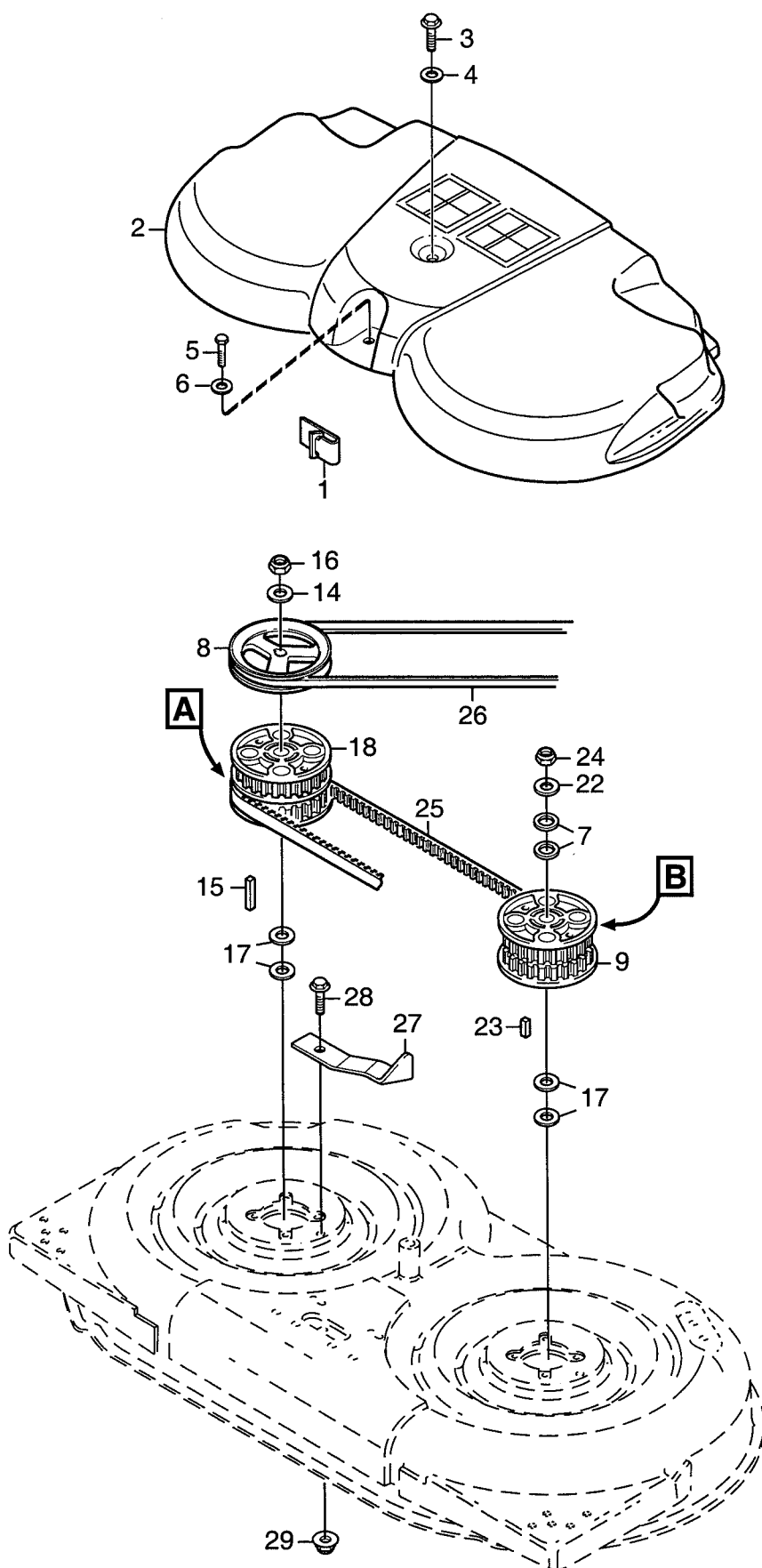


Utgåva Issue 2006- 11		Bildnr Picture No 1348A		READY- VILLA KLIPPAGGREGAT 85M RAM		READY- VILLA MOWER DECK 85M FRAME		Sida Page 310	
Pos. Fig.	Antal/Quantity				Art nr Part No	Benämning	Description	Sats Kit	Anmärkning Notes
	2940								
1	1				1134- 5523- 01	Ram.....	Frame.....		
2	1				1134- 5625- 01	Aggregatsfjäder	Mower deck spring		
3	1				1134- 5026- 02	Kätting	Chain.....		
4	1				1134- 0304- 05	Axel	Shaft		
5	2				9935- 1020- 16	Skruv	Screw.....		
6	8				1134- 2406- 01	Skyddsruille.....	Guard roller.....		
7	2				1134- 2405- 01	Kåphjul	Casing wheel.....		
8	4				1134- 3047- 01	Distans	Spacer.....		
9	2				9699- 0104- 02	Bricka	Washer.....		
10	1				1134- 3025- 01	Kåpa- gul	Casing- yellow		
11	2				1134- 4991- 01	Aggregatsarm	Mower deck arm		
12	1				1134- 9026- 01	Lagerbussning.....	Bearing bush kit.....		Sats 4 st/Kit of 4
13	2				9598- 0003- 02	Låsnål	Spring pin		
14	2				9898- 1035- 16	Skruv	Screw.....		
15	2				9747- 1031- 02	Låsmutter	Lock nut.....		
16	2				9501- 0502- 00	Smörjnippel	Grease joint.....		
97	2				9402- 3523- 01	Sidodekal.....	Side decal		
99	1				8211- 3039- 03	Bruksanvisning	Owner's manual		Ej ill/not ill.

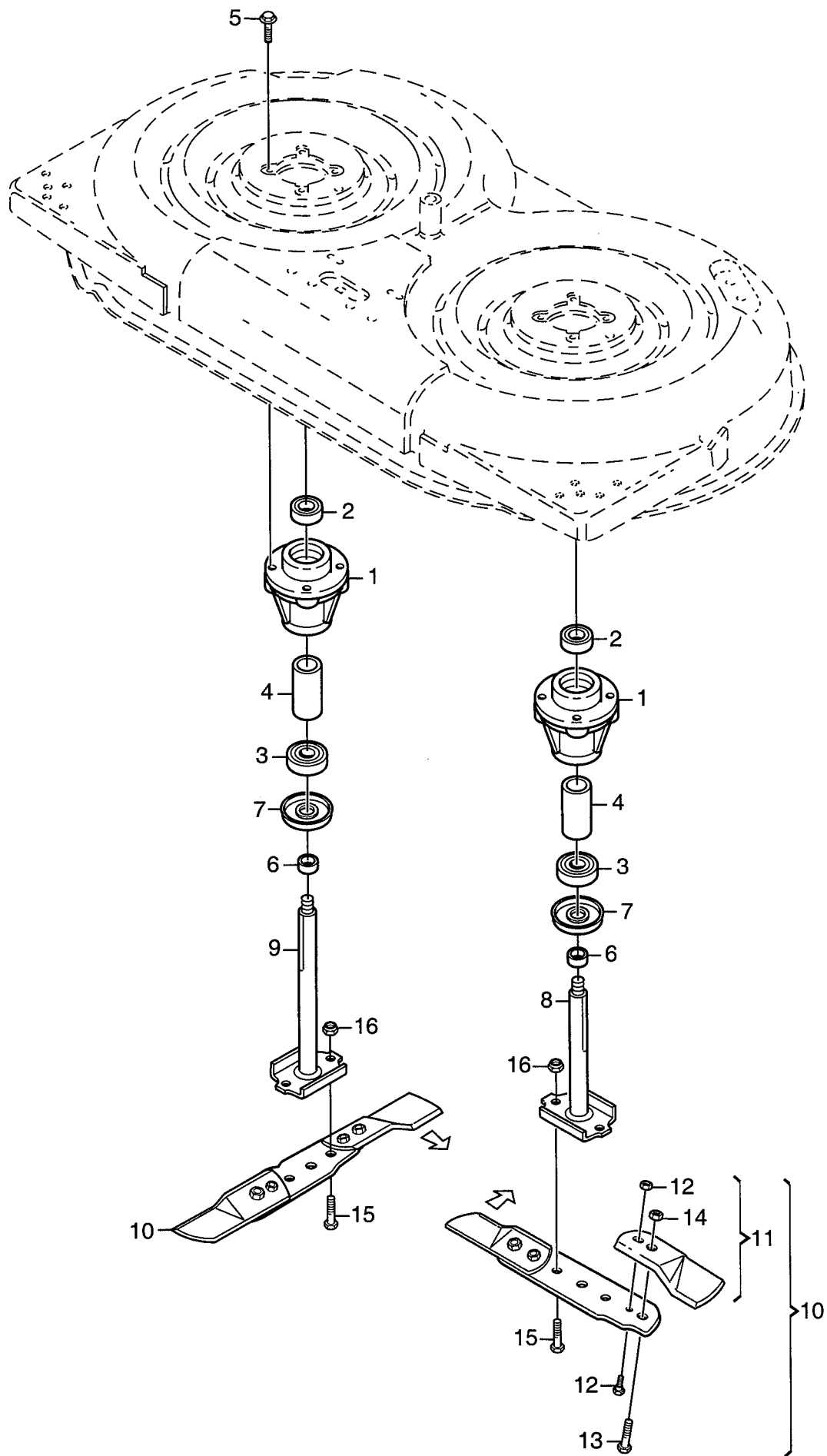
X



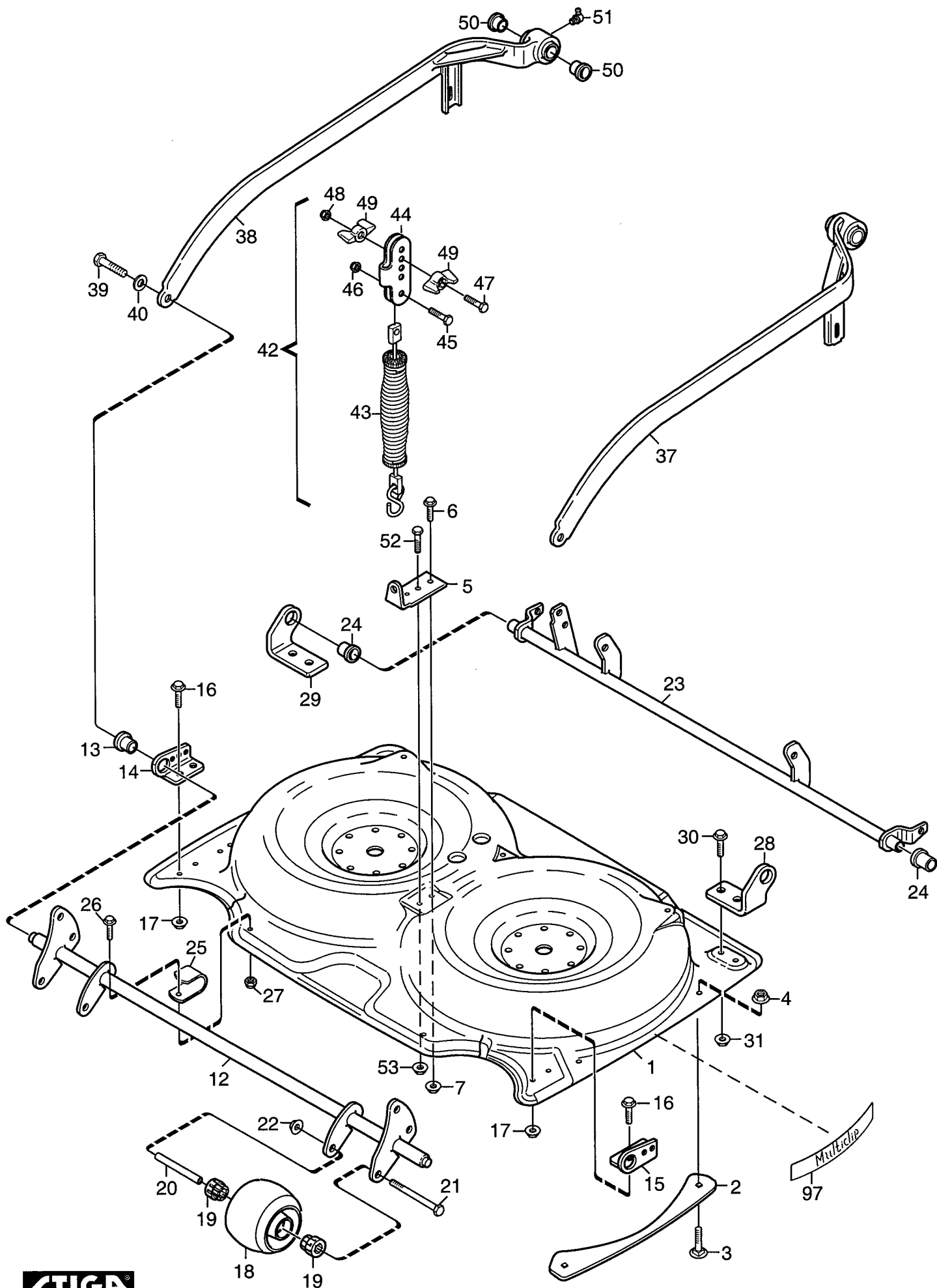
Utgåva Issue 2006- 11		Bildnr Picture No 1349A		READY- VILLA KLIPPAGGREGAT 85M REGLAGE		READY- VILLA MOWER DECK 85M CONTROLS		Sida Page 312	
Pos. Fig.	Antal/Quantity				Art nr Part No	Benämning	Description	Sats Kit	Anmärkning Notes
	2940								
2	1				1134- 3015- 01	Justerstag- hö.....	Adjusting bracket- RH		Ej ill/not ill.
2	1				1134- 3015- 02	Justerstag- vä	Adjusting bracket- LH		
3	4				9959- 0820- 16	Skruv	Screw		Ej ill/not ill.
4	4				9739- 0831- 22	Mutter	Nut		
6	1				1134- 5056- 01	Fäste- hö	Bracket- RH		
6	1				1134- 5056- 02	Fäste- vä	Bracket- LH		
7	4				9959- 0820- 16	Skruv	Screw		
8	4				9739- 0831- 22	Mutter	Nut		
9	2				1134- 2907- 03	Pivotplatta	Pivoting plate		
10	4				1134- 0240- 00	Ansatsskruv	Shoulder screw		
11	4				9747- 0831- 02	Mutter	Lock nut		
12	1				1134- 2411- 01	Fäste	Bracket		
13	2				9959- 0820- 16	Skruv	Screw		Inkl. pos 27 - 34, 37
14	2				9739- 0831- 22	Mutter	Nut		
15	1				1134- 3013- 01	Parallellaxel	Shaft		
16	2				1134- 0240- 00	Ansatsskruv	Shoulder screw		
17	2				9747- 0831- 02	Mutter	Lock nut		
18	2				1134- 1833- 02	Stag	Rod		
19	4				9675- 0012- 02	Starlock	Locking washer		
20	1				1134- 3011- 01	Höjdställn.segment	Height adj. quadrant		
21	3				9959- 0820- 16	Skruv	Screw		
22	3				9739- 0831- 22	Mutter	Nut		
23	1				1134- 5215- 01	Höjdställn.spak kpl	Height adj.lever assy		
24	1				1134- 2427- 01	Distans	Spacer		
25	1				9997- 0825- 16	Skruv	Screw		
26	1				9747- 0831- 02	Mutter	Lock nut		
27	1				1134- 3010- 02	• Låssegment	• Locking quadrant		
28	1				9997- 0620- 16	• Skruv	• Screw		
29	1				9747- 0631- 02	• Låsmutter	• Lock nut		
30	1				1134- 3262- 01	• Tryckfjäder	• Compression spring		
31	1				1134- 3009- 01	• Låskil	• Locking key		
32	1				1134- 3041- 01	• Reglagestång	• Control rod		
33	1				1134- 3051- 01	• Spärrknapp	• Locking knob		
34	1				9406- 0006- 00	• Handtag	• Handle		
35	1				1134- 3026- 02	Höjdvisningsplåt	Height measure plate		
36	1				9945- 0816- 16	Skruv	Screw		
37	1				1134- 5114- 01	• Distans	• Spacer		



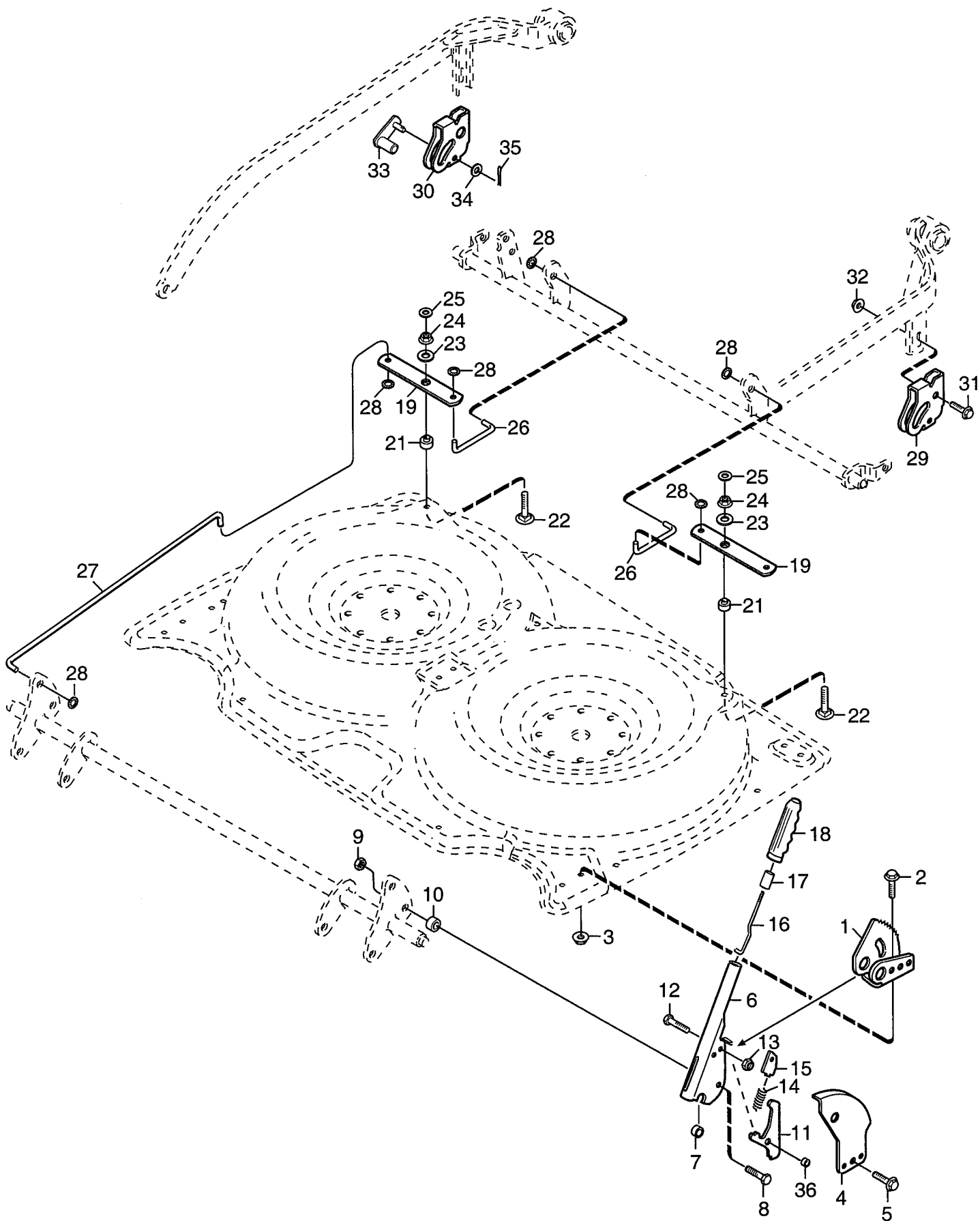
Utgåva Issue 2006- 11		Bildnr Picture No 1350B		READY- VILLA KLIPPAGGREGAT 85M TRANSMISSION		READY- VILLA MOWER DECK 85M TRANSMISSION		Sida Page 314	
Pos. Fig.	Antal/Quantity				Art nr Part No	Benämning	Description	Sats Kit	Anmärkning Notes
	2940								
1	3				1134- 3632- 01	Clips- remstyrning	Clips- belt guide		L = 40 mm



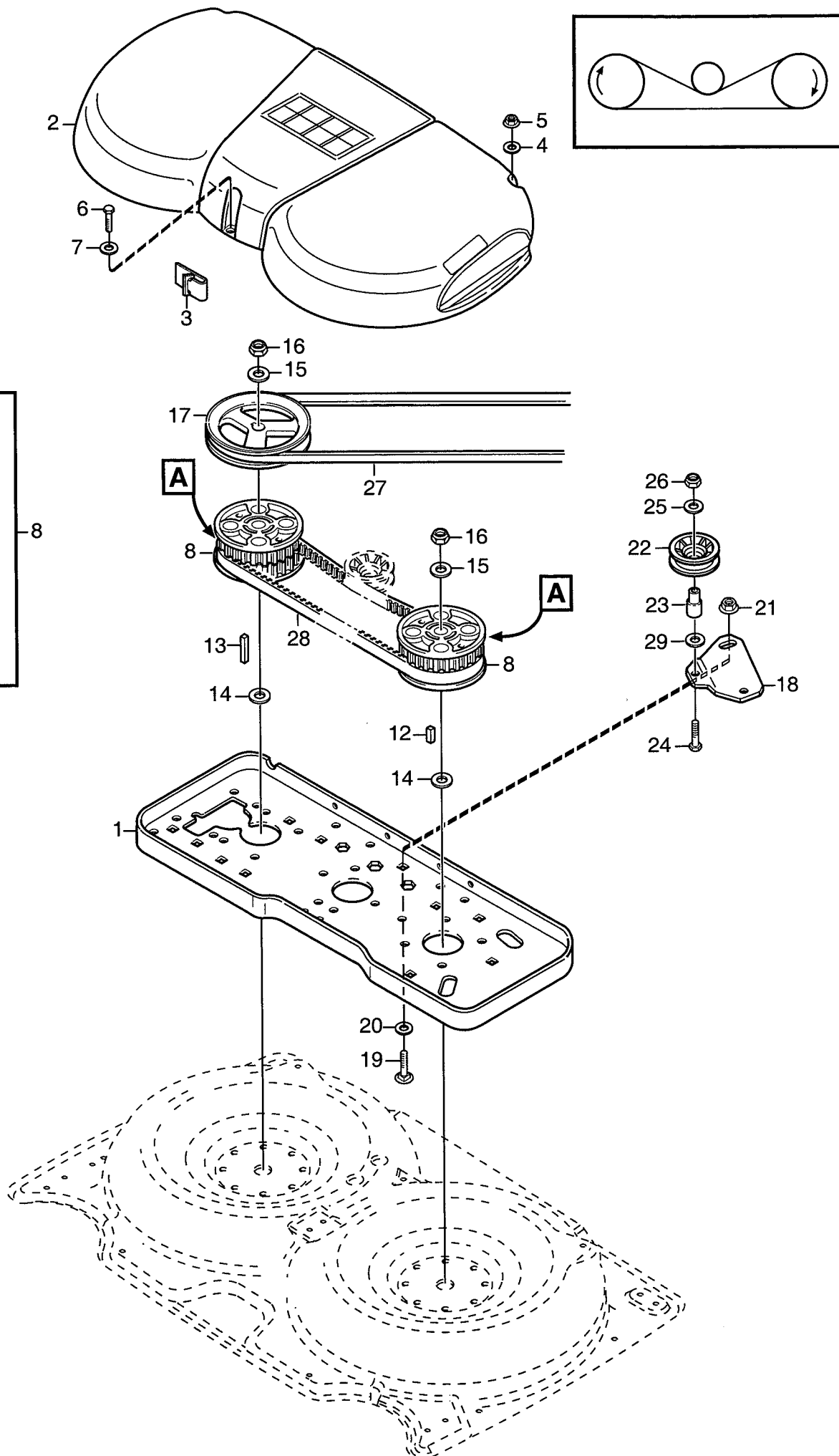
Utgåva Issue 2006- 11		Bildnr Picture No 1351A		READY- VILLA KLIPPAGGREGAT 85M KNIVAR		READY- VILLA MOWER DECK 85M BLADES		Sida Page 316	
Pos. Fig.	Antal/Quantity				Art nr Part No	Benämning	Description	Sats Kit	Anmärkning Notes
	2940								
1	2				1134- 3841- 01 Lagerbox kpl.....	Bearing box assy.....			Sats 2 st/Kit of 2 2 knivar/2 blade tips 6 bultar/6 bolts+nuts
2	1				9549- 0019- 00 • Kullager	• Ball bearing			
3	1				9549- 0020- 00 • Kullager	• Ball bearing			
4	1				1134- 0051- 05 • Distans	• Spacer			
5	8				9945- 0825- 16 Skruv	Screw			
6	2				1134- 3725- 01 Distans	Spacer			
7	2				1134- 5130- 01 Skyddsbricka	Bearing cover			
8	1				1134- 4600- 01 Knivaxel	Blade shaft			
9	1				1134- 4600- 05 Knivaxel	Blade shaft			
10	1				1134- 9080- 01 Knivbalk kpl	Blade bar assy			
11	2				1134- 9082- 01 • Knivsats kpl	• Blade kit			
12	1				1134- 9054- 01 •• Brytbultsats	•• Shear bolt kit			
13	2				9997- 0816- 16 •• Skruv	•• Screw			
14	2				9712- 0831- 02 •• Låsmutter	•• Lock nut			
15	4				9997- 0820- 16 Skruv	Screw			
16	4				9747- 0831- 02 Mutter	Lock nut			



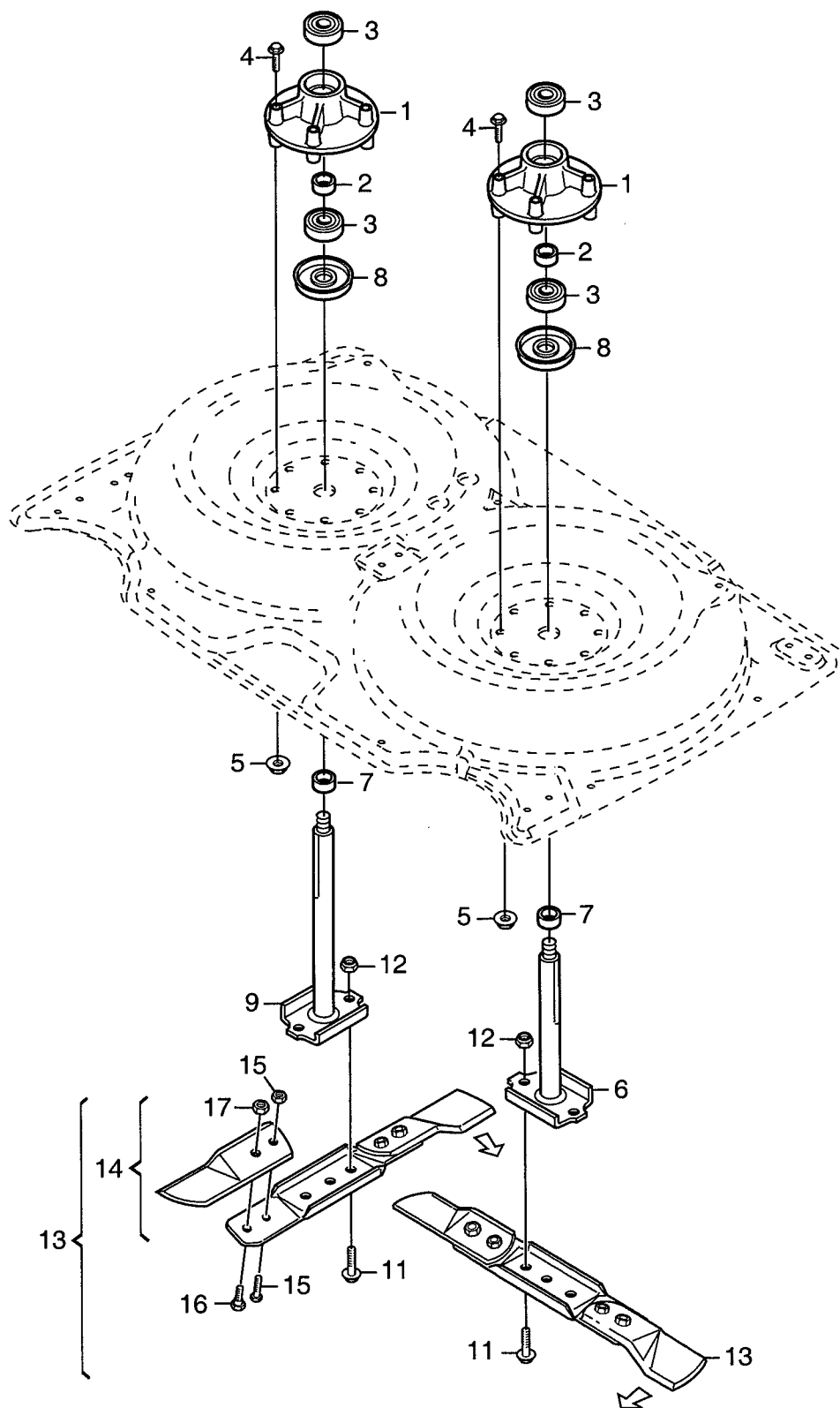
Utgåva Issue 2006- 11		Bildnr Picture No 1168B		READY- VILLA KLIPPAGGREGAT 92M RAM		READY- VILLA MOWER DECK 92M FRAME		Sida Page 318	
Pos. Fig.	Antal/Quantity				Art nr Part No	Benämning	Description	Sats Kit	Anmärkning Notes
	2929								
1	1				1134-4888-01	Kåpa	Casing		Sats 4 st/kit of 4
2	2				1134-4323-01	Ledplåt	Guide plate		
3	4				9897-0616-16	Vagnsbult	Carriage bolt		
4	4				9739-0631-22	Mutter	Nut		
5	1				1134-4320-06	Lyftöra	Lift bracket		
6	1				9959-0820-16	Skruv	Screw		
7	1				9739-0831-22	Mutter	Nut		
12	1				1134-4890-01	Framaxel	Front axle		
13	1				1134-9024-01	Lager	Bearing		
14	1				1134-4292-01	Lagerfäste	Bearing holder		
15	1				1134-4292-02	Lagerfäste	Bearing holder		
16	2				9959-0816-16	Skruv	Screw		
17	2				9739-0831-22	Mutter	Nut		
18	2				1134-4284-01	Hjul	Wheel		
19	4				1134-4319-01	Lager	Bearing		
20	2				1134-4318-01	Hylsa	Wheel axle		
21	2				9997-0812-02	Skruv	Screw		
22	2				9739-0831-22	Mutter	Nut		
23	1				1134-5892-01	Bakaxel	Rear axle		
24	1				1134-9024-01	Lager	Bearing		
25	2				1134-4689-01	Stöd	Support		
26	2				9959-0616-16	Skruv	Screw		
27	2				9747-0631-02	Låsmutter	Lock nut		
28	1				1134-5180-01	Fäste- vä	Bracket- LH		
29	1				1134-5180-02	Fäste- hö	Bracket- RH		
30	4				9959-0816-16	Skruv	Screw		
31	4				9739-0831-22	Mutter	Nut		
37	1				1134-5599-01	Aggregatsarm- vä	Mower deck arm- LH		
38	1				1134-5599-02	Aggregatsarm- hö	Mower deck arm- RH		
39	2				9997-1016-16	Skruv	Screw		
40	2				9699-0030-02	Planbricka	Flat washer		
42	1				1134-4805-01	Lyftfjäder kpl	Lift spring assy		
43	1				1134-4574-02	• Fjäder	• Spring		
44	1				1134-4577-01	• Pendel	• Spring pivot		
45	1				9997-0825-16	• Skruv	• Screw		
46	1				9747-0831-02	• Mutter	• Lock nut		
47	1				9997-0835-12	• Skruv	• Screw		
48	1				9747-0831-02	• Mutter	• Lock nut		
49	2				1134-4481-01	• Vingmutter	• Wing nut		
50	1				1134-9026-01	Lagerbussning	Bearing bush kit		
51	2				9501-0502-00	Smörjnippel	Grease joint		
52	1				9997-0620-16	Skruv	Screw		
53	1				9739-0631-22	Mutter	Nut		
97	2				9402-3523-01	Sidodekal	Side decal		
99	1				8211-3037-04	Bruksanvisning	Owner's manual		



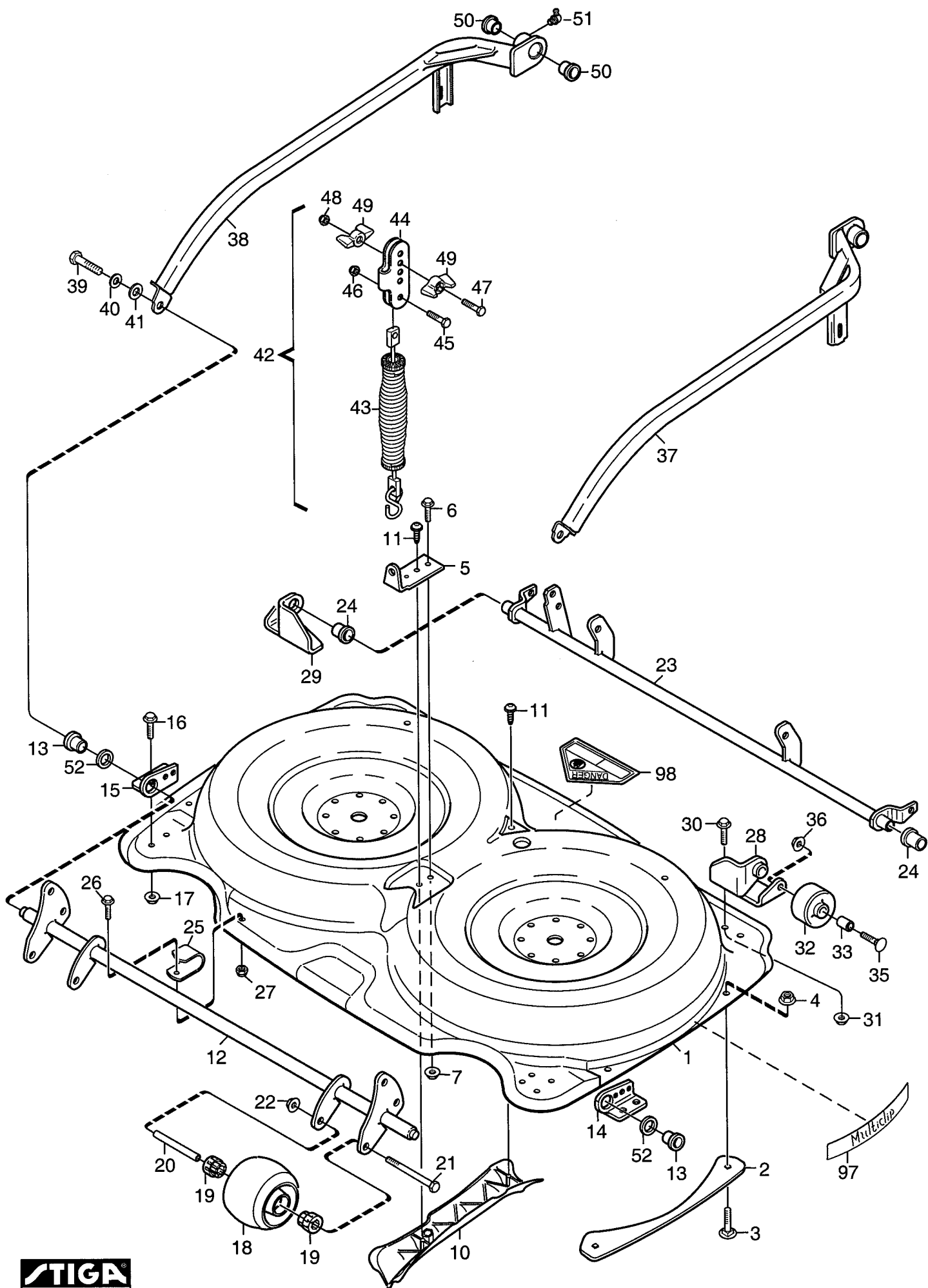
Utgåva Issue 2006- 11		Bildnr Picture No 1169B		READY- VILLA KLIPPAGGREGAT 92M REGLAGE		READY- VILLA MOWER DECK 92M CONTROLS		Sida Page 320	
Pos. Fig.	Antal/Quantity				Art nr Part No	Benämning	Description	Sats Kit	Anmärkning Notes
	2929								
1	1				1134- 4536- 01	Höjdsegment	Height adj. quadrant.....		Inkl. pos 11 - 18, 36
2	2				9959- 0816- 16	Skruv	Screw		
3	2				9739- 0831- 22	Mutter	Nut		
4	1				1134- 4291- 03	Höjdvinsningsplåt.....	Height adjust plate		
5	1				9945- 0816- 16	Skruv	Screw		
6	1				1134- 5215- 01	Höjdinställn.spak kpl	Height adj.lever assy		
7	1				1134- 2427- 01	Distans	Spacer.....		
8	1				9997- 0840- 16	Skruv	Screw		
9	1				9747- 0831- 02	Mutter	Lock nut		
10	1				1134- 3113- 03	Distans	Spacer.....		
11	1				1134- 3010- 02	• Låssegment	• Locking quadrant		
12	1				9997- 0620- 16	• Skruv	• Screw		
13	1				9747- 0631- 02	• Låsmutter	• Lock nut		
14	1				1134- 3262- 01	• Tryckfjäder	• Compression spring		
15	1				1134- 3009- 01	• Låskil	• Locking key		
16	1				1134- 3041- 01	• Reglagestång	• Control rod		
17	1				1134- 3051- 01	• Spärrknapp	• Locking knob		
18	1				9406- 0006- 00	• Handtag	• Handle		
19	2				1134- 4296- 02	Länkarm	Pivot arm		
21	2				1134- 4298- 02	Distans	Spacer.....		
22	2				9897- 0850- 12	Skruv	Screw		
23	2				9699- 0028- 02	Planbricka.....	Flat washer.....		
24	2				9747- 0831- 02	Mutter	Lock nut		
25	2				9699- 0056- 02	Planbricka.....	Flat washer.....		
26	2				1134- 4894- 03	Tryckstång	Push rod		
27	2				1134- 4294- 04	Tryckstång	Push rod		
28	8				9675- 0012- 02	Starlock	Locking washer		
29	1				1134- 4304- 01	Justerplåt- vä	Adjusting plate- LH.....		
30	1				1134- 4304- 02	Justerplåt- hö.....	Adjusting plate- RH		
31	2				9959- 0816- 16	Skruv	Screw		
32	2				9739- 0831- 22	Mutter	Nut		
33	2				1134- 4307- 01	Låshake	Catch		
34	2				9699- 0025- 02	Planbricka.....	Washer		
35	2				9599- 0054- 02	Saxpinne.....	Cotter pin		
36	1				1134- 5114- 01	• Distans	• Spacer		



Utgåva Issue 2006- 11		Bildnr Picture No 1171A		READY- VILLA KLIPPAGGREGAT 92M TRANSMISSION		READY- VILLA MOWER DECK 92M TRANSMISSION		Sida Page 322	
Pos. Fig.	Antal/Quantity				Art nr Part No	Benämning	Description	Sats Kit	Anmärkning Notes
	2929								
1	1				1134- 5229- 01	Transmissionsplatta.....	Transmission plate.....		L = 25 mm L = 45 mm <

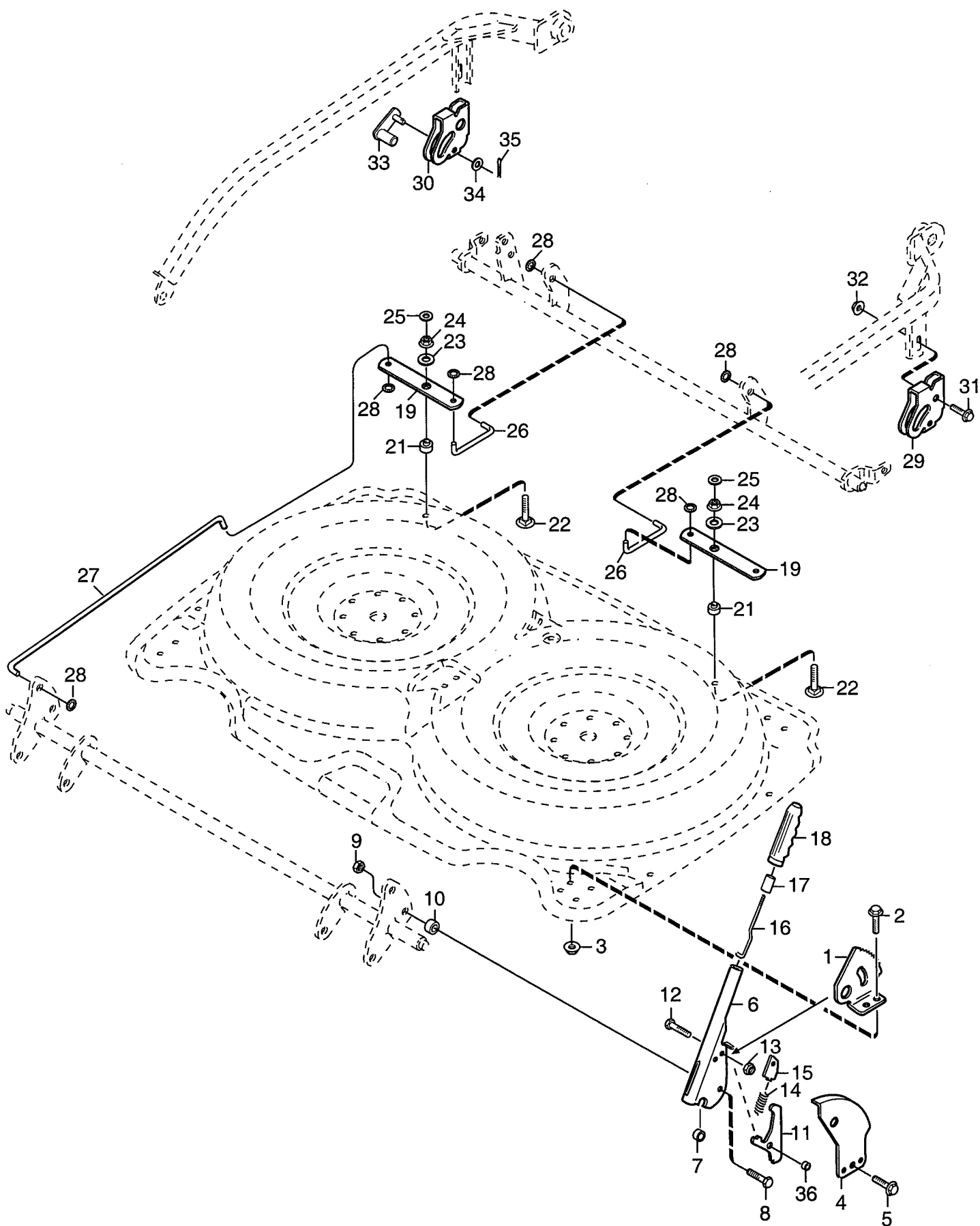


Utgåva Issue 2006- 11		Bildnr Picture No 1304		READY- VILLA KLIPPAGGREGAT 92M KNIVAR		READY- VILLA MOWER DECK 92M BLADES		Sida Page 324	
Pos. Fig.	Antal/Quantity				Art nr Part No	Benämning	Description	Sats Kit	Anmärkning Notes
	2929								
1	2				1134- 5049- 01 Lagerbox kpl.....	Bearing box assy.....		Sats 2 st/kit of 2 2 knivar/2 blade tips 6 bultar/6 bolts+nuts	
2	1				1134- 3725- 04 • Distans	• Spacer			
3	2				9549- 0020- 00 • Kullager	• Ball bearing			
4	8				9997- 0865- 12 Skruv	Screw			
5	8				9739- 0831- 22 Mutter	Nut			
6	1				1134- 5052- 04 Knivaxel	Blade shaft			
7	2				1134- 3725- 04 Distans	Spacer			
8	2				1134- 5130- 01 Skyddsbricka	Bearing cover			
9	1				1134- 5052- 03 Knivaxel	Blade shaft			
11	4				9997- 0820- 16 Skruv	Screw			
12	4				9747- 0831- 02 Mutter	Lock nut			
13	1				1134- 9073- 01 Knivbalk kpl	Blade bar assy			
14	2				1134- 9074- 01 • Knivsats kpl	• Blade kit assy			
15	1				1134- 9054- 01 •• Brytbultsats	•• Shear bolt kit			
16	2				1134- 4479- 01 •• Ansatsbult	•• Shoulder bolt			
17	2				9712- 0831- 02 •• Låsmutter	•• Lock nut			

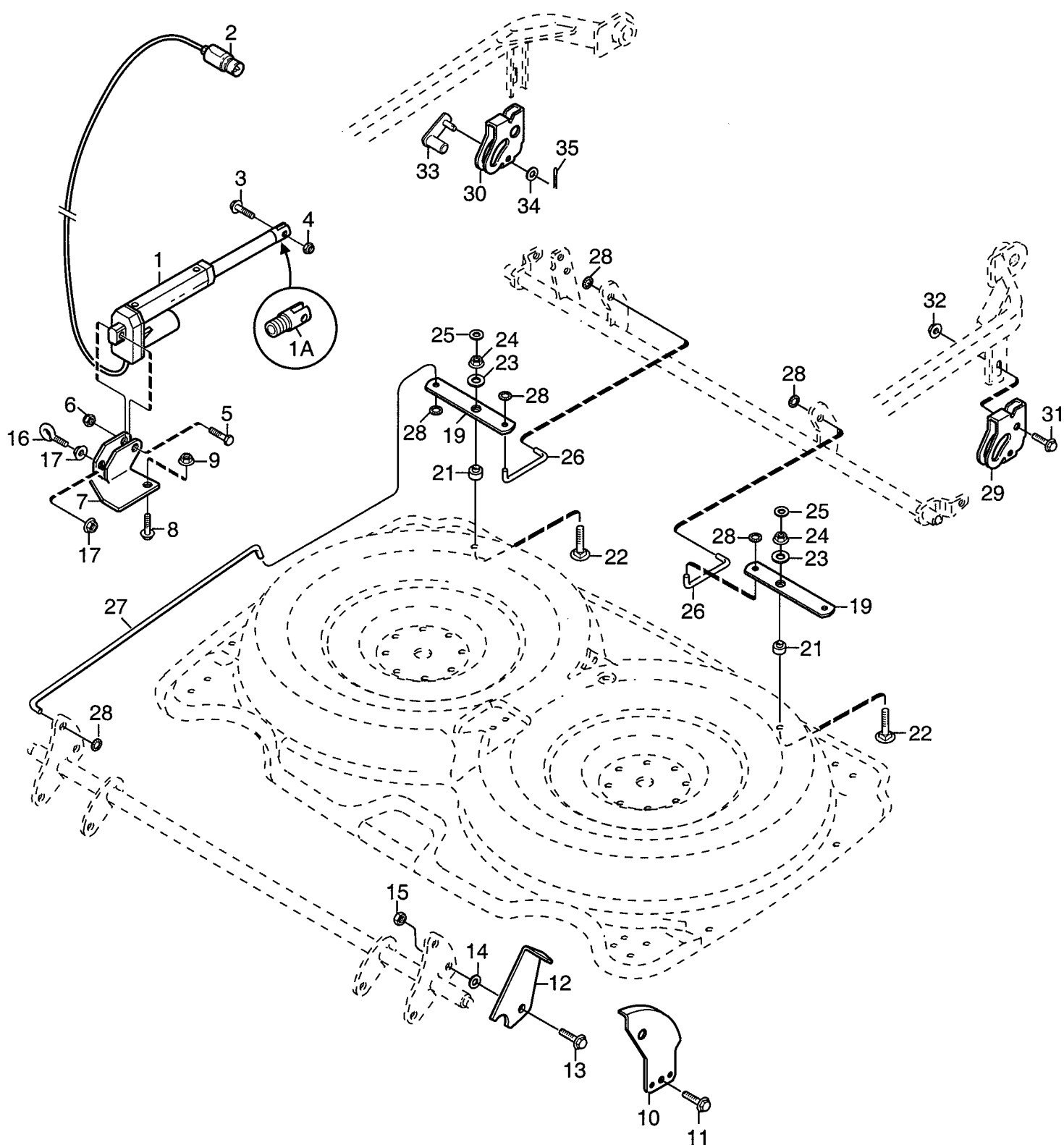


Utgåva Issue 2006- 11		Bildnr Picture No 1166B		VILLA KLIPPAGGREGAT 107M RAM		VILLA MOWER DECK 107M FRAME		Sida Page 326	
Pos. Fig.	Antal/Quantity				Art nr Part No	Benämning	Description	Sats Kit	Anmärkning Notes
	2930	2934							
1	1				1134-5187-01	Kåpa	Casing		
2	2				1134-4323-01	Ledplåt.....	Guide plate		
3	4				9897-0616-16	Vagnsbult	Carriage bolt		
4	4				9739-0631-22	Mutter.....	Nut		
5	1				1134-4320-06	Lyftöra	Lift bracket		
6	1				9959-0820-16	Skruv	Screw		
7	1				9739-0831-22	Mutter.....	Nut		
10	1				1134-4905-01	Ledskena	Guide bar		
11	2				9838-9530-12	Skruv	Screw		
12	1				1134-4890-01	Framaxel.....	Front axle		
13	1				1134-9024-01	Lager	Bearing		Sats 4 st/kit of 4
14	1				1134-4292-01	Lagerfäste.....	Bearing holder.....		
15	1				1134-4292-02	Lagerfäste.....	Bearing holder.....		
16	4				9959-0816-16	Skruv	Screw		
17	4				9739-0831-22	Mutter.....	Nut		
18	2				1134-4284-01	Hjul.....	Wheel		
19	4				1134-4319-01	Lager	Bearing		
20	2				1134-4318-01	Hylsa	Wheel axle.....		
21	2				9997-0812-02	Skruv	Screw		
22	2				9739-0831-22	Mutter.....	Nut		
23	1				1134-5892-01	Bakaxel.....	Rear axle		
24	1				1134-9024-01	Lager	Bearing		Sats 4 st/kit of 4
25	2				1134-4689-01	Stöd.....	Support		
26	2				9959-0616-16	Skruv	Screw		
27	2				9747-0631-02	Låsmutter	Lock nut.....		
28	1				1134-4299-01	Fäste- vä	Wheel attachment- LH.....		
29	1				1134-4299-02	Fäste- hö	Wheel attachment- RH		
30	4				9959-0816-16	Skruv	Screw		
31	4				9739-0831-22	Mutter.....	Nut		
32	2				1134-3434-01	Rulle	Roller		
33	2				1134-0041-05	Hylsa	Bushing.....		
35	2				9897-1060-12	Skruv	Screw		
36	2				9739-1031-22	Mutter.....	Nut		
37	1				1134-4544-01	Aggregatsarm- vä	Mower deck arm- LH.....		
38	1				1134-4544-02	Aggregatsarm- hö	Mower deck arm- RH		
39	2				9997-1016-16	Skruv	Screw		
40	2				9699-0030-02	Planbricka.....	Flat washer.....		10 x 26 x 2.0
41	2				9699-0104-02	Bricka	Washer		17 x 30 x 3.0
42	1				1134-4688-02	Lyftfjäder kpl.....	Lift spring assy		Inkl. pos 43 - 49
43	1				1134-4574-01	• Fjäder kpl	• Spring assy		
44	1				1134-4577-01	• Pendel.....	• Spring pivot		
45	1				9997-0825-16	• Skruv	• Screw		
46	1				9747-0831-02	• Mutter	• Lock nut.....		
47	1				9997-0835-12	• Skruv	• Screw		
48	1				9747-0831-02	• Mutter	• Lock nut.....		
49	2				1134-4481-01	• Vingmutter.....	• Wing nut		
50	1				1134-9026-01	Lagerbussning.....	Bearing bush kit		Sats 4 st/kit of 4
51	2				9501-0502-00	Smörjnippel	Grease joint.....		
52	2				1134-4745-01	Distansbricka.....	Spacer washer		
97	2				9402-3523-01	Sidodekal.....	Side decal		
98	1				9402-3124-00	Varn.decal "Danger"	Warn. label "Danger".....		US, CA
99	1				8211-3037-04	Bruksanvisning	Owner's manual		Ej ill/not ill.

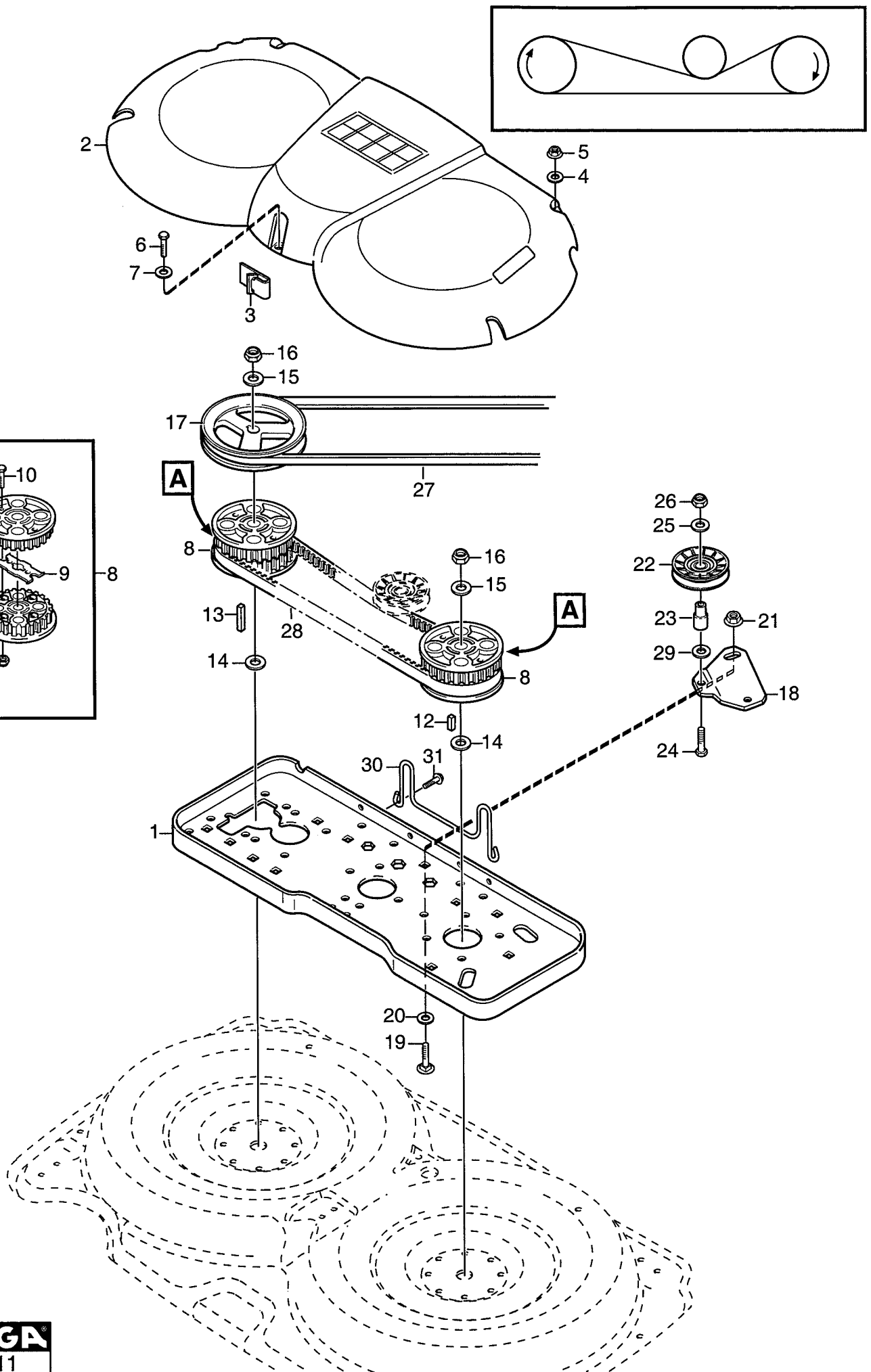
X



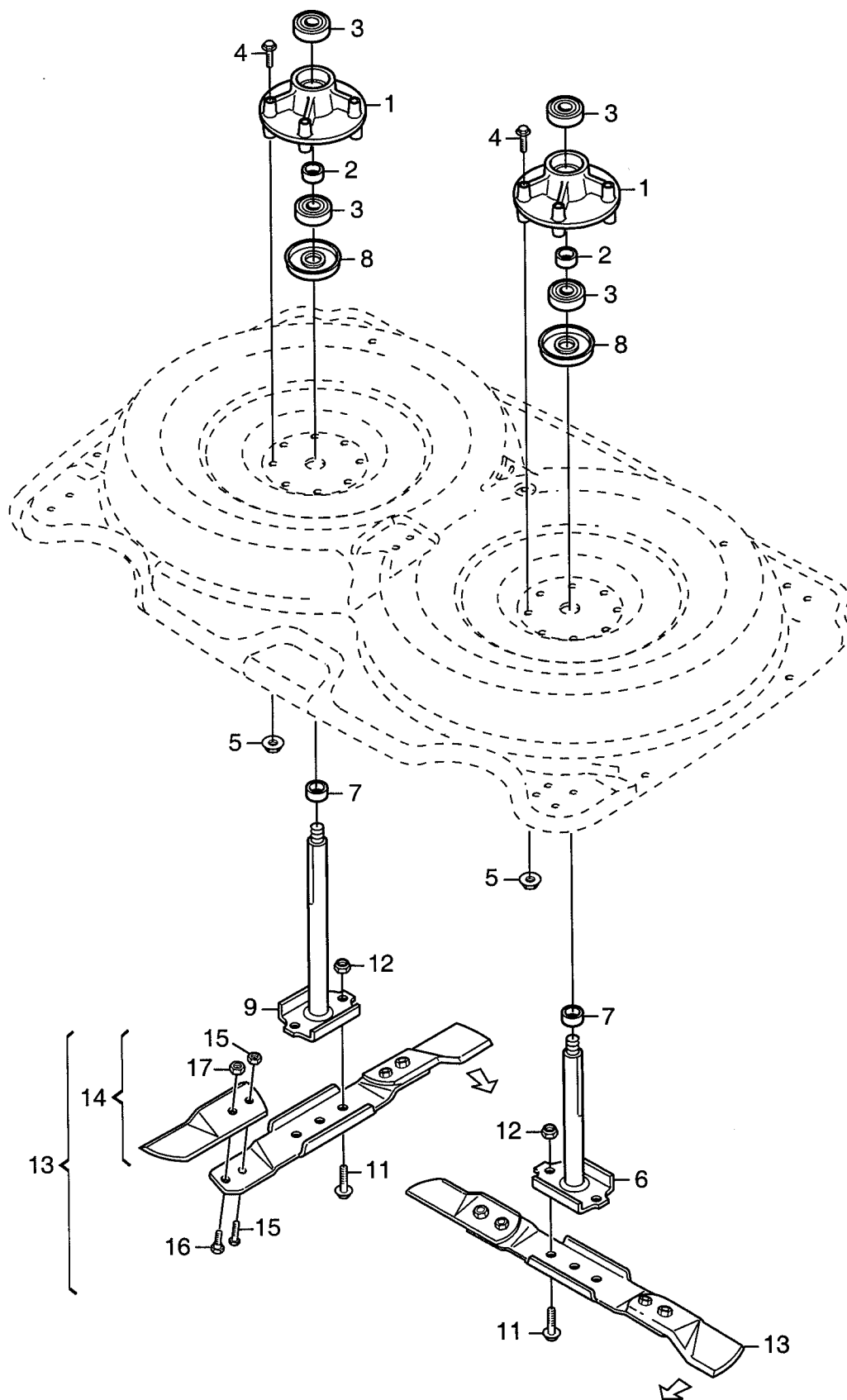
Utgåva Issue 2006- 11		Bildnr Picture No 1042C		VILLA KLIPPAGGREGAT 107M REGLAGE		VILLA MOWER DECK 107M CONTROLS		Sida Page 328	
Pos. Fig.	Antal/Quantity				Art nr Part No	Benämning	Description	Sats Kit	Anmärkning Notes
	2930								
1	1				1134- 4290- 01 Höjdsegment	Height adj. quadrant.....		Inkl. pos 11 - 18, 36	
2	2				9959- 0816- 16 Skruv	Screw			
3	2				9739- 0831- 22 Mutter	Nut			
4	1				1134- 4291- 03 Höjdvinsningsplåt.....	Height adjust plate			
5	1				9945- 0816- 16 Skruv	Screw			
6	1				1134- 5215- 01 Höjdinställn.spak kpl	Height adj.lever assy			
7	1				1134- 2427- 01 Distans	Spacer			
8	1				9997- 0840- 16 Skruv	Screw			
9	1				9747- 0831- 02 Mutter	Lock nut			
10	1				1134- 3113- 03 Distans	Spacer			
11	1				1134- 3010- 02 • Låssegment	• Locking quadrant			
12	1				9997- 0620- 16 • Skruv	• Screw			
13	1				9747- 0631- 02 • Låsmutter	• Lock nut			
14	1				1134- 3262- 01 • Tryckfjäder	• Compression spring			
15	1				1134- 3009- 01 • Låskil	• Locking key			
16	1				1134- 3041- 01 • Reglagestång	• Control rod			
17	1				1134- 3051- 01 • Spärrknapp	• Locking knob			
18	1				9406- 0006- 00 • Handtag	• Handle			
19	2				1134- 4296- 02 Länkarm	Pivot arm			
21	2				1134- 4298- 02 Distans	Spacer			
22	2				9897- 0850- 12 Skruv	Screw			
23	2				9699- 0028- 02 Planbricka	Flat washer			
24	2				9747- 0831- 02 Mutter	Lock nut			
25	2				9699- 0056- 02 Planbricka	Flat washer			
26	2				1134- 4894- 04 Tryckstång	Push rod			
27	2				1134- 4294- 02 Tryckstång	Push rod			
28	8				9675- 0012- 02 Starlock	Locking washer			
29	1				1134- 4304- 01 Justerplåt- vä	Adjusting plate- LH			
30	1				1134- 4304- 02 Justerplåt- hö	Adjusting plate- RH			
31	2				9959- 0816- 16 Skruv	Screw			
32	2				9739- 0831- 22 Mutter	Nut			
33	2				1134- 4307- 01 Låshake	Catch			
34	2				9699- 0025- 02 Planbricka	Washer			
35	2				9599- 0054- 02 Saxpinne	Cotter pin			
36	1				1134- 5114- 01 • Distans	• Spacer			



Utgåva Issue 2006- 11		Bildnr Picture No 1310A		VILLA KLIPPAGGREGAT 107M EL. REGLAGE		VILLA MOWER DECK 107M EL. CONTROL		Sida Page 330	
Pos. Fig.	Antal/Quantity				Art nr Part No	Benämning	Description	Sats Kit	Anmärkning Notes
	2934								
1	1				1134-4884-01	Ställdon	Electric lifter		
1A	1				1139-0005-01	• Kolvstångsända	• Rod end		
2	1				1134-4057-01	• Hankontakt	• Male terminal		
3	1				9959-0830-16	Skruv	Screw		
4	1				9747-0831-02	Mutter	Lock nut		
5	1				9997-0840-16	Skruv	Screw		
6	1				9747-0831-02	Mutter	Lock nut		
7	1				1134-4877-01	Fäste	Bracket		
8	2				9959-0820-16	Skruv	Screw		
9	2				9739-0831-22	Mutter	Nut		
10	1				1134-4291-03	Höjdvisningsplåt	Height adjust plate		
11	1				9945-0816-16	Skruv	Screw		
12	1				1134-4883-01	Visare	Pointer		
13	1				9959-0830-16	Skruv	Screw		
14	1				9699-0056-02	Planbricka	Flat washer		
15	2				9739-0831-22	Mutter	Nut		
16	1				1134-2138-01	Skruvögla	Eye bolt		
17	2				9739-0831-22	Mutter	Nut		
19	2				1134-4296-02	Länkarm	Pivot arm		
21	2				1134-4298-02	Distans	Spacer		
22	2				9897-0850-12	Skruv	Screw		
23	2				9699-0028-02	Planbricka	Flat washer		
24	2				9747-0831-02	Mutter	Lock nut		
25	2				9699-0056-02	Planbricka	Flat washer		
26	2				1134-4894-04	Tryckstång	Push rod		
27	2				1134-4294-02	Tryckstång	Push rod		
28	8				9675-0012-02	Starlock	Locking washer		
29	1				1134-4304-01	Justerplåt- vä	Adjusting plate- LH		
30	1				1134-4304-02	Justerplåt- hö	Adjusting plate- RH		
31	2				9959-0816-16	Skruv	Screw		
32	2				9739-0831-22	Mutter	Nut		
33	2				1134-4307-01	Låshake	Catch		
34	2				9699-0025-02	Planbricka	Washer		
35	2				9599-0054-02	Saxpinne	Cotter pin		



Utgåva Issue 2006- 11		Bildnr Picture No 1311		VILLA KLIPPAGGREGAT 107M TRANSMISSION		VILLA MOWER DECK 107M TRANSMISSION		Sida Page 332	
Pos. Fig.	Antal/Quantity				Art nr Part No	Benämning	Description	Sats Kit	Anmärkning Notes
	2930	2934							
1	1				1134-5229-01	Transmissionsplatta.....	Transmission plate.....		L = 25 mm L = 45 mm <



Utgåva Issue 2006- 11		Bildnr Picture No 1306		VILLA KLIPPAGGREGAT 107M KNIVAR		VILLA MOWER DECK 107M BLADES		Sida Page 334	
Pos. Fig.	Antal/Quantity				Art nr Part No	Benämning	Description	Sats Kit	Anmärkning Notes
	2930 2934								
1	2				1134- 5049- 01 Lagerbox kpl.....	Bearing box assy.....			
2	1				1134- 3725- 04 • Distans	• Spacer			
3	2				9549- 0020- 00 • Kullager	• Ball bearing			
4	8				9997- 0865- 12 Skruv	Screw			
5	8				9739- 0831- 22 Mutter	Nut			
6	1				1134- 5052- 04 Knivaxel	Blade shaft			
7	2				1134- 3725- 04 Distans	Spacer			
8	2				1134- 5130- 01 Skyddsbricka	Bearing cover			
9	1				1134- 5052- 03 Knivaxel	Blade shaft			
11	4				9997- 0820- 16 Skruv	Screw			
12	4				9747- 0831- 02 Mutter	Lock nut			
13	1				1134- 9072- 01 Knivbalk kpl	Blade bar assy			
14	2				1134- 9074- 01 • Knivsats kpl	• Blade kit assy			
15	1				1134- 9054- 01 •• Brytbultsats	•• Shear bolt kit			
16	2				1134- 4479- 01 •• Ansatsbult	•• Shoulder bolt			
17	2				9712- 0831- 02 •• Låsmutter	•• Lock nut			
								Sats 2 st/Kit of 2 2 knivar/2 blade tips 6 bultar/6 bolts+nuts	