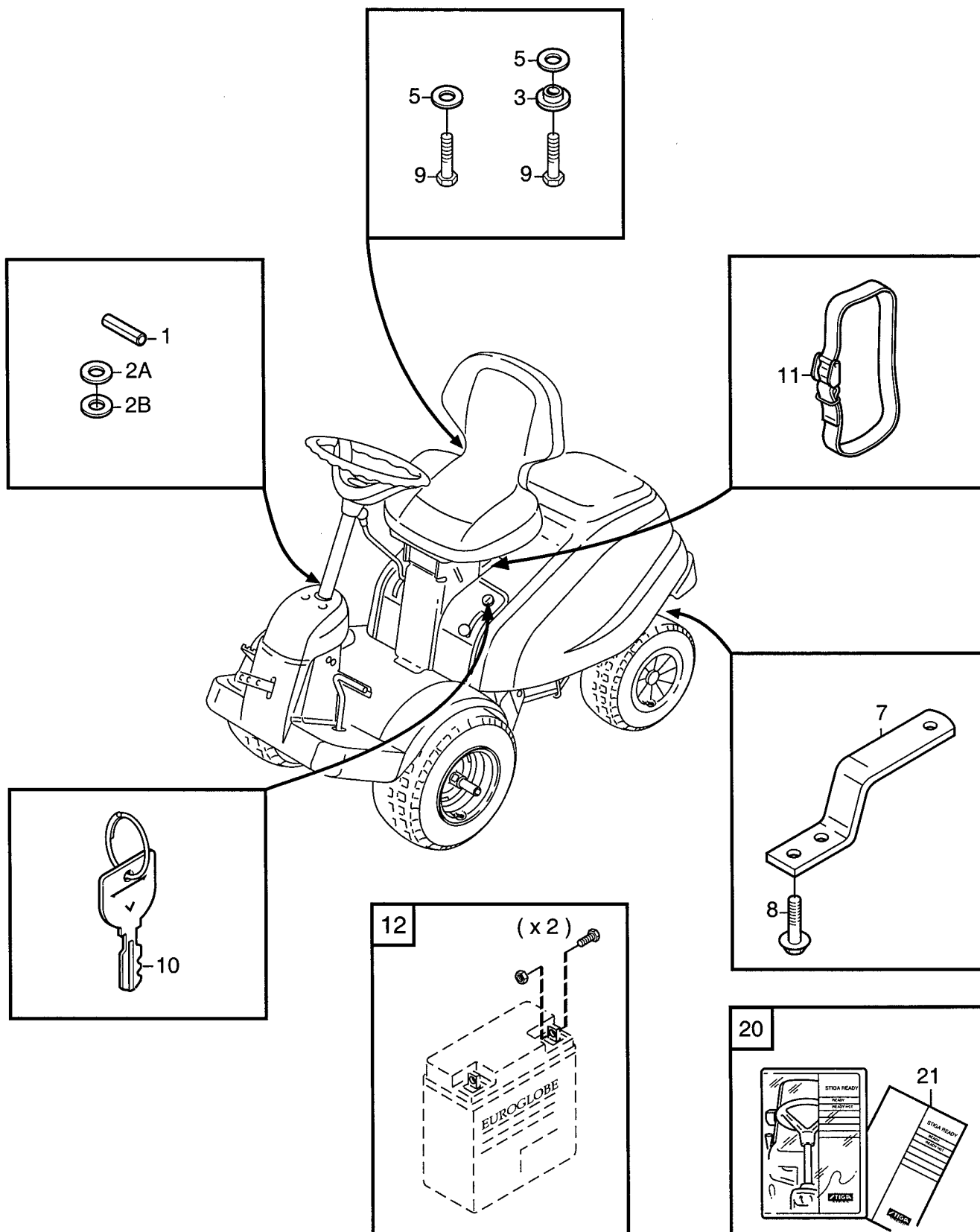
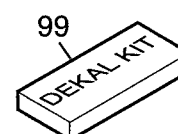
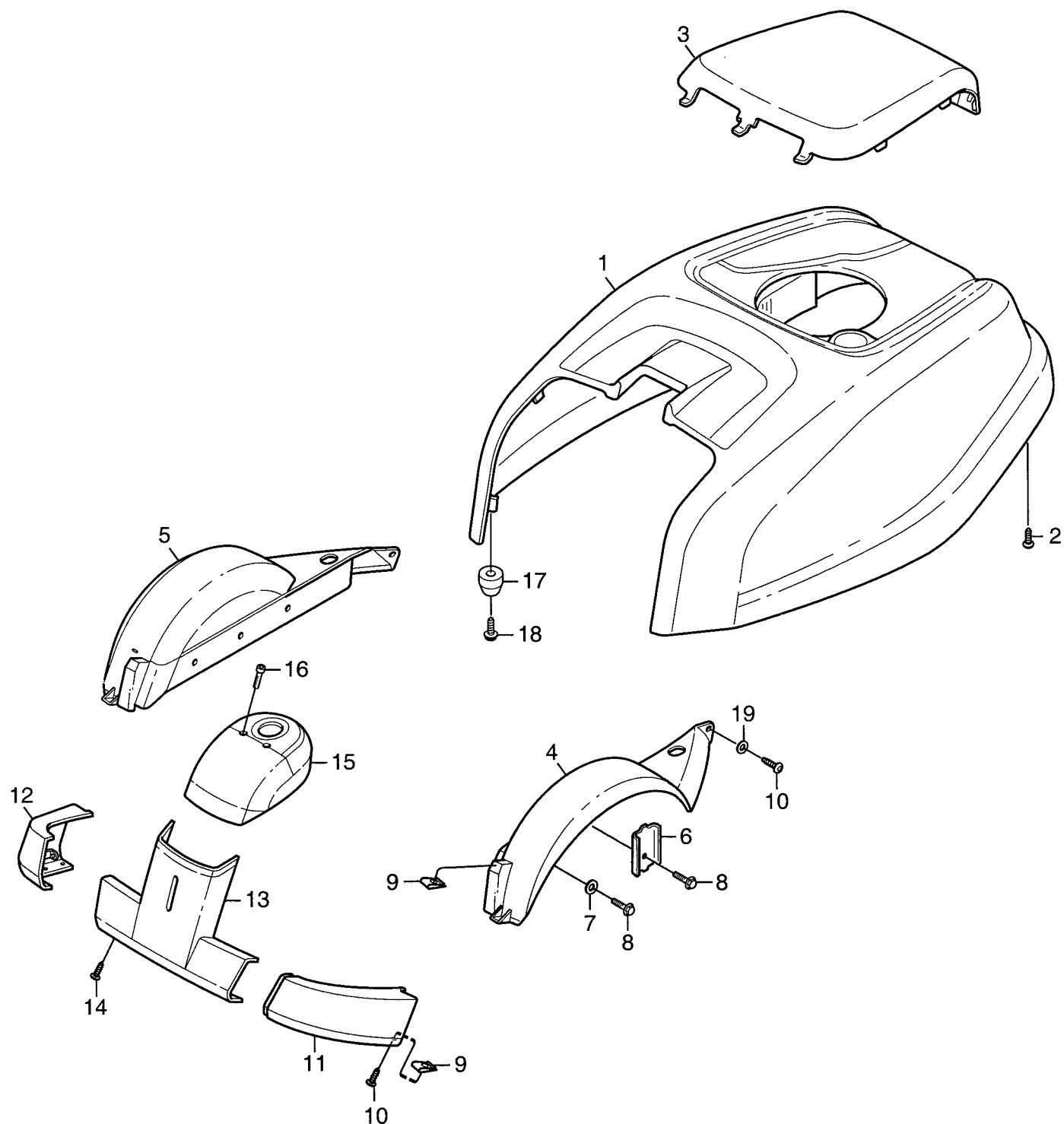


Genuine Spare Parts

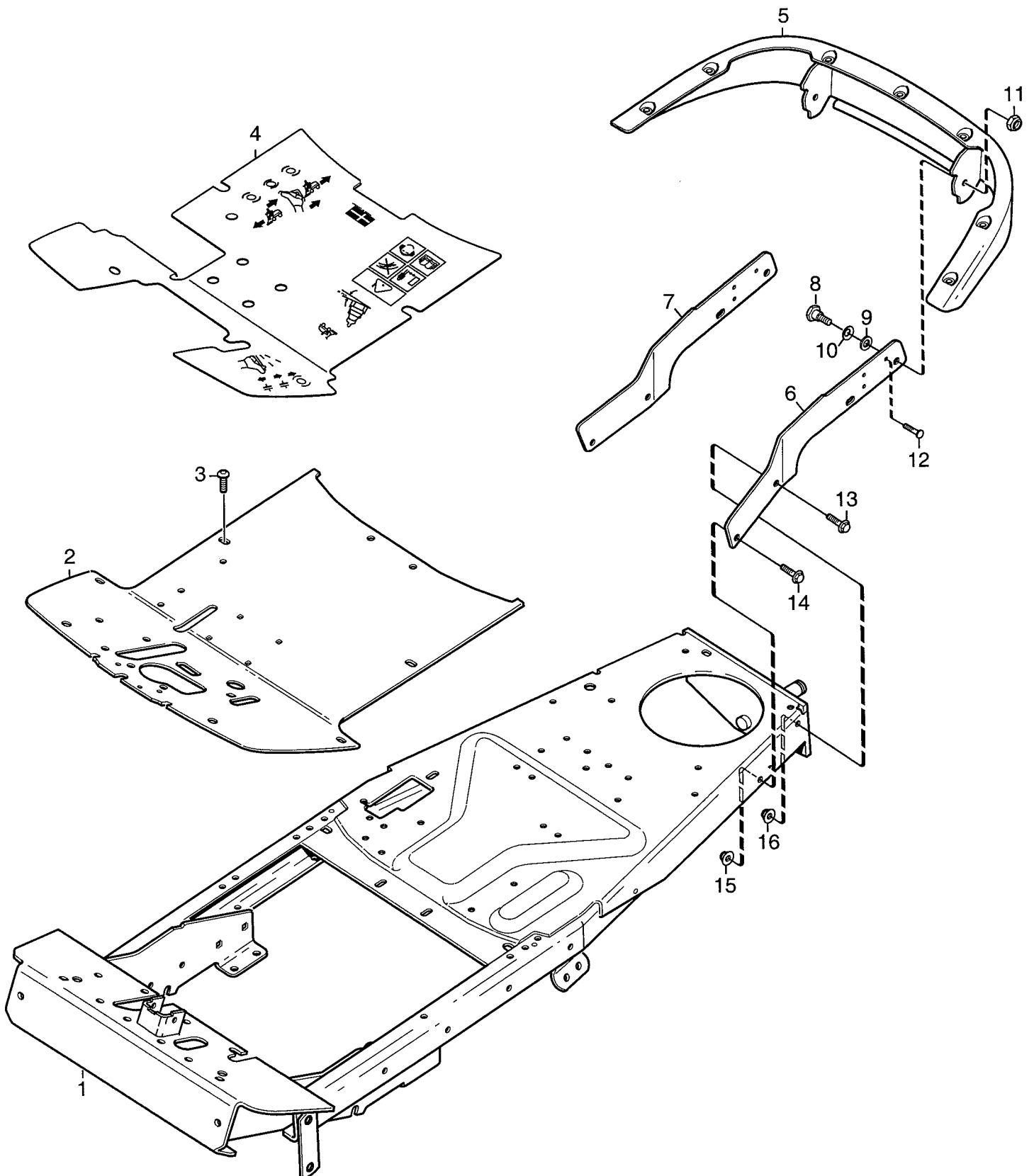




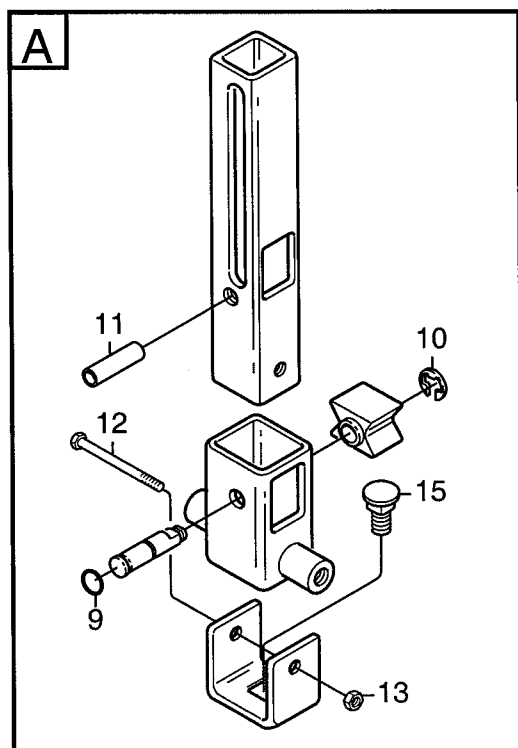
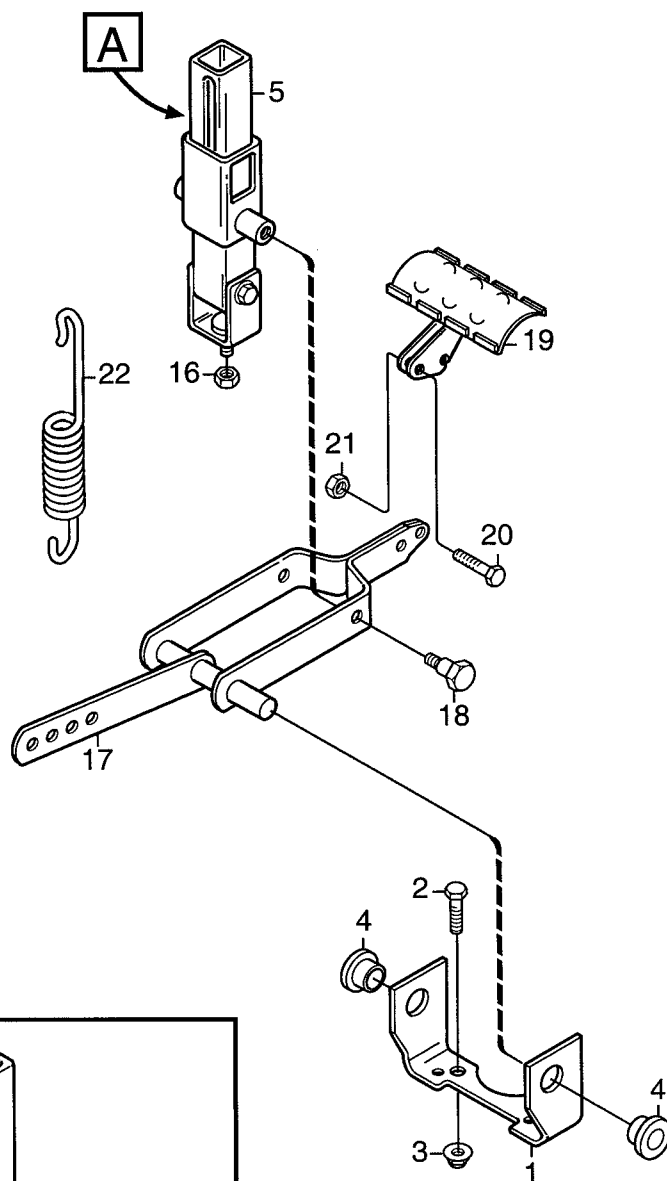
Utgåva Issue 2006- 11		Bildnr Picture No 1637A		READY MONTERINGSDETALJER		READY ASSEMBLY PARTS		Sida Page 244	
Pos. Fig.	Antal/Quantity				Art nr Part No	Benämning	Description	Sats Kit	Anmärkning Notes
	2715	2716							
0	1				1134-4664-06	Monteringsdetaljer.....	Assembly parts		0.5 mm 1.0 mm
1	1				9595-0262-00	• Spännstift	• Locating pin		
2A	1				9699-0103-02	• Shims	• Flat washer		
2B	1				9699-0114-02	• Shims	• Flat washer		
3	2				1134-4185-01	• Ansatsbricka	• Flange washer		
5	4				9699-0056-02	• Planbricka	• Flat washer		
7	1				1134-4627-01	• Dragögla	• Tow bar		
8	2				9959-0820-16	• Skruv	• Screw		
9	4				9997-0820-16	• Skruv	• Screw		
10	1				1134-6125-01	• Tändningsnyckel.....	• Ignition key		
11	1				1134-5245-01	• Batterirem	• Battery strap		
12	1				1134-6113-01	• Batteriskruvar	• Battery screws		
20	1				1134-3771-80	Mapp m.trycksaker	Folder w.manuals		
21	1				8211-0209-13	• Säkerhetsföreskrifter	• Safety regulations		
21	1				8211-0346-01	• Bruksanvisning	• Owner's manual		
21	1				8211-0347-01	• Bruksanvisning	• Owner's manual		
21	1				8211-2002-03	• Garantikort.....	• Warranty card		



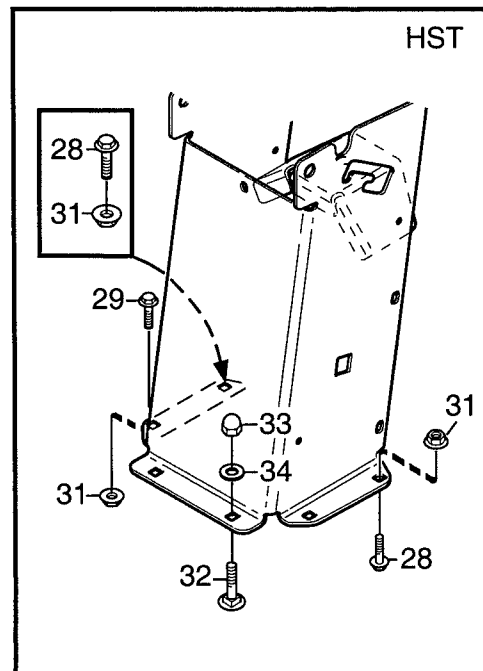
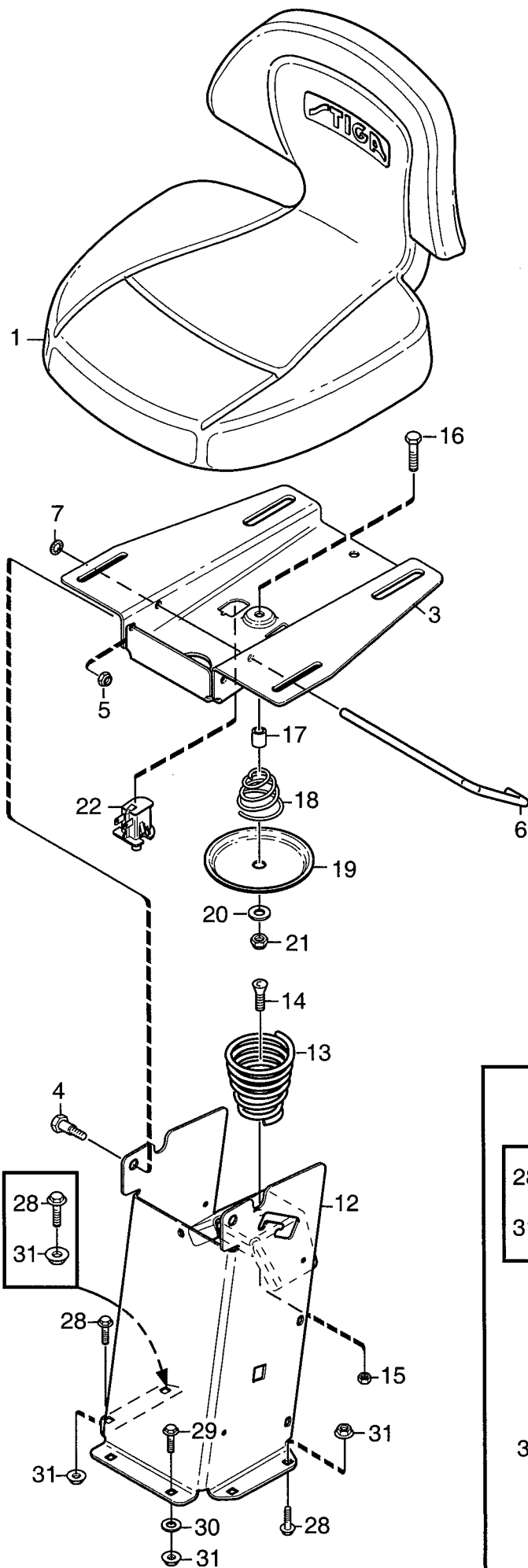
Utgåva Issue 2006- 11		Bildnr Picture No 1641A		READY KAROSS		READY BODY WORK		Sida Page 246	
Pos. Fig.	Antal/Quantity				Art nr Part No	Benämning	Description	Sats Kit	Anmärkning Notes
	2715	2716							
1	1	1			1134-5283-01	Motorhuv- grå.....	Engine hood- grey		
2	7	7			9838-9530-12	Skruv	Screw		
3	1	1			1134-5284-01	Motorlucka- gul	Engine cover- yellow		
4	1	1			1134-5307-01	Stänkskärm- vä, grå.....	Mud guard- LH, grey		
5	1	1			1134-5307-02	Stänkskärm- hö, grå	Mud guard- RH, grey		
6	2	2			1134-0225-00	Stödplåt	Support plate		
7	4	4			9699-0056-02	Planbricka.....	Flat washer.....		
8	6	6			9945-0816-16	Skruv	Screw		
9	4	4			1134-4176-01	Clips	Clips		
10	4	4			9893-0616-16	Skruv	Screw		
11	1	1			1134-5306-01	Stötfångare, front- vä.....	Bumper, front- LH		
12	1	1			1134-5306-02	Stötfångare, front- hö	Bumper, front- RH		
13	1	1			1134-5305-01	Front- nedre	Front plate- lower		
14	6	6			9893-0616-16	Skruv	Screw		
15	1	1			1134-5304-01	Front- övre	Front plate- upper		
16	2	2			9946-0525-16	Skruv	Screw		
17	2	2			1134-4790-02	Styrning	Hood guide		
18	2	2			9838-9530-12	Skruv	Screw		
19	2	2			9699-0060-02	Planbricka.....	Flat washer.....		
99	1				1134-5591-01	Dekalsats	Label kit		
99		1			1134-5591-02	Dekalsats	Label kit		



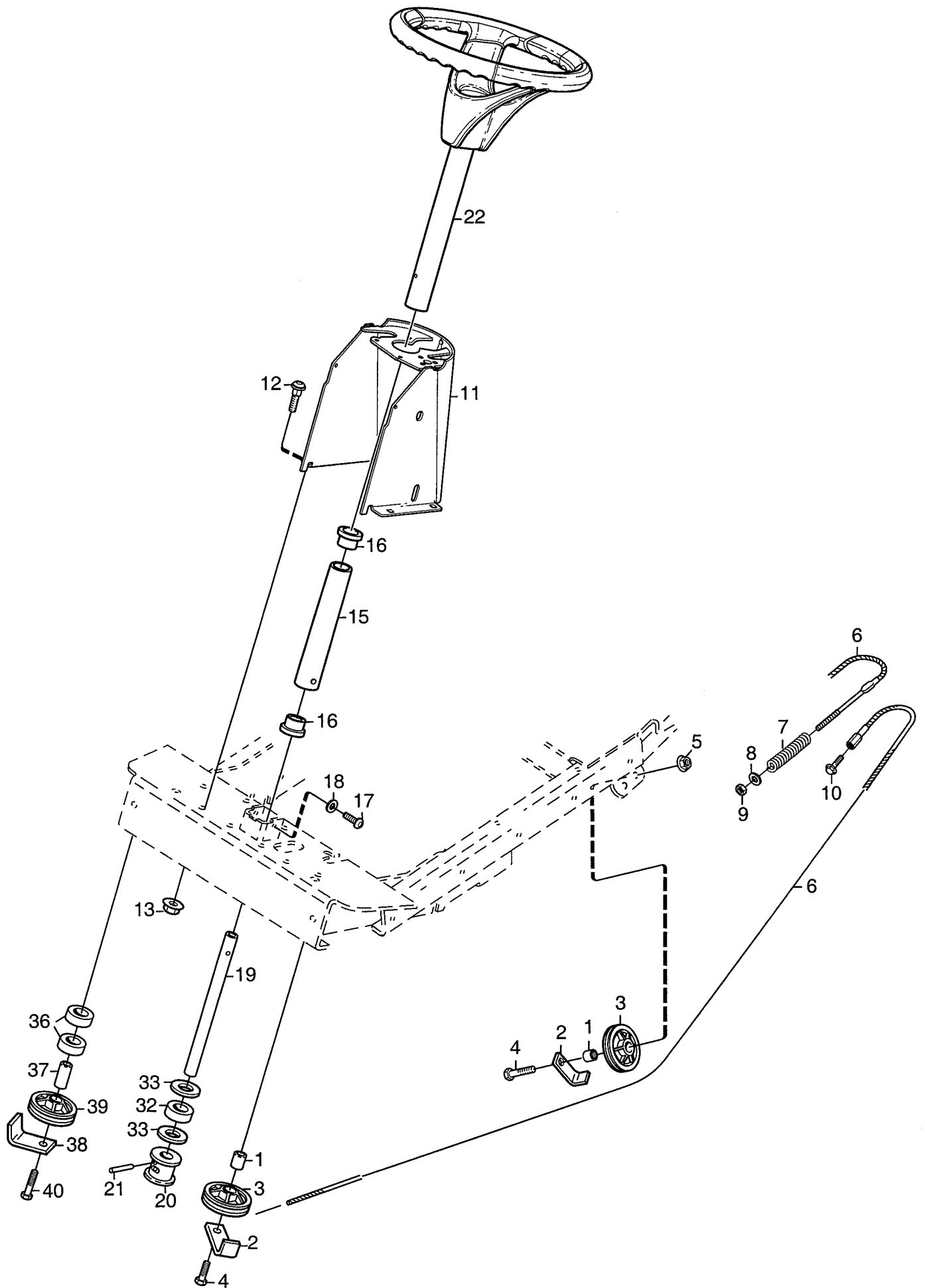
Utgåva Issue 2006- 11		Bildnr Picture No 1642A		READY RAM			READY FRAME			Sida Page 248	
Pos. Fig.	Antal/Quantity				Art nr Part No	Benämning	Description	Sats Kit	Anmärkning Notes		
	2715	2716									
1	1	1			1134-5546-02	Ram.....	Frame.....				
2	1	1			1134-5293-01	Durk.....	Floor plate.....				
3	2	2			9893-0616-16	Skruv.....	Screw.....				
4	1				1134-5338-01	Durkmatta.....	Floor mat.....				
4		1			1134-5339-01	Durkmatta.....	Floor mat.....				
5	1	1			1134-5453-01	Stötfångare- bak.....	Bumper- rear.....				
6	1	1			1134-5334-01	Stag- vä.....	Attachment- LH.....				
7	1	1			1134-5334-02	Stag- hö.....	Attachment- RH.....				
8	2	2			1134-0240-00	Ansattsskruv.....	Shoulder screw.....				
9	2	2			1134-4242-01	Distansbricka.....	Spacer washer.....				
10	2	2			9694-0001-00	Fjäderbricka.....	Washer.....				
11	2	2			9747-0831-02	Mutter.....	Lock nut.....				
12	2	2			9943-0516-16	Skruv.....	Screw.....				
13	2	2			9959-0820-16	Skruv.....	Screw.....				
14	2	2			9959-0825-16	Skruv.....	Screw.....				
15	1	1			9739-0831-22	Mutter.....	Nut.....				
16	3	3			9739-0831-22	Mutter.....	Nut.....				



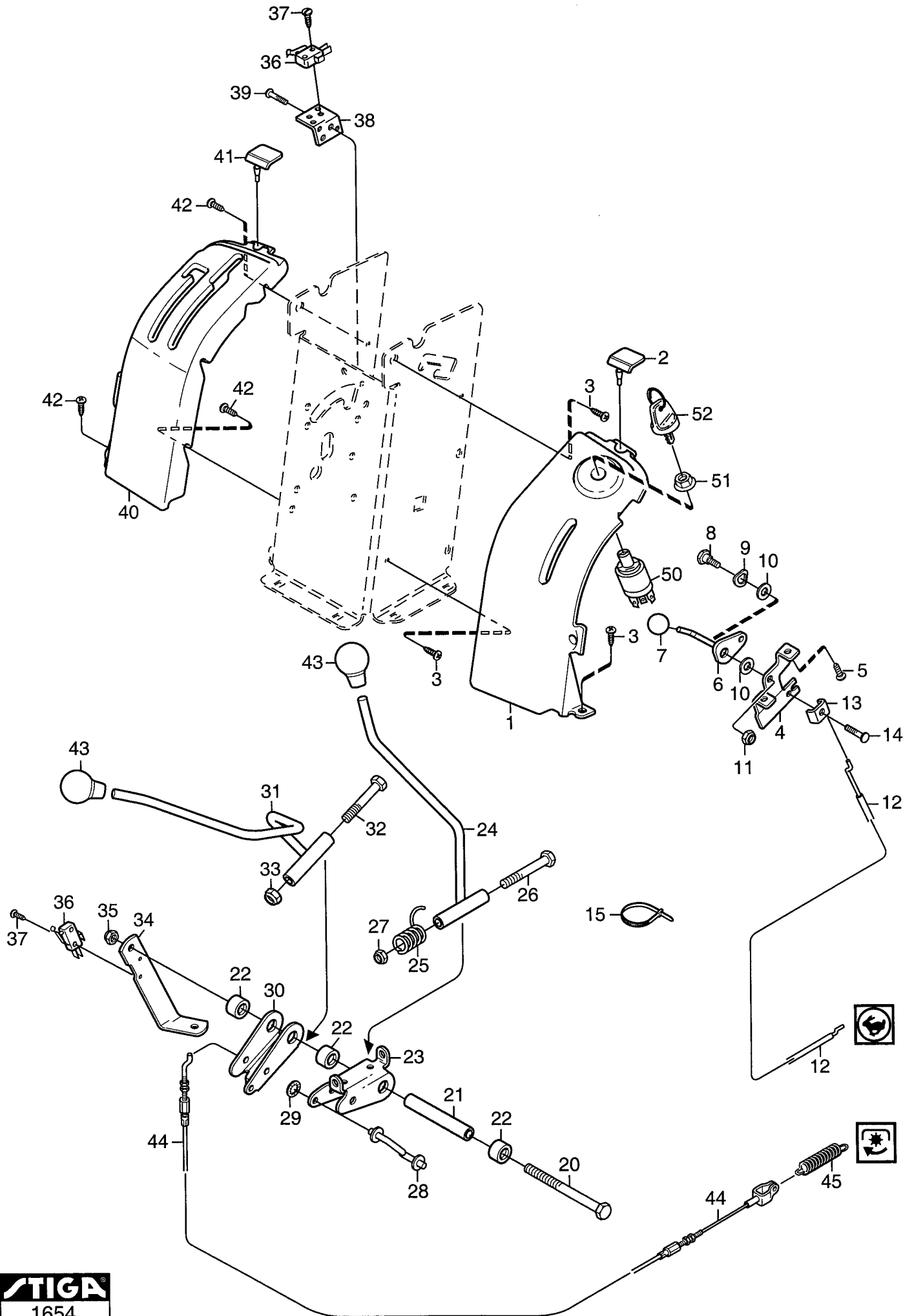
Utgåva Issue 2006- 11		Bildnr Picture No 1151C		READY REDSKAPSLYFT		READY LIFTING DEVICE		Sida Page 250	
Pos. Fig.	Antal/Quantity				Art nr Part No	Benämning	Description	Sats Kit	Anmärkning Notes
	2715 2716								
1	1				1134-4117-01 Fäste	Bracket			
2	2				9959-1025-16 Skruv	Screw			
3	2				9739-1031-22 Mutter	Nut			
4	2				1134-2684-01 Lager	Bearing			
5	1				1134-4945-01 Lyftspärr kpl	Lift catch assy			
9	1				9404-0027-01 • O-ring	• O-ring			
10	1				9650-0039-04 • Seegersäkring	• Lock ring			
11	1				9595-0276-01 • Spännstift	• Locating pin			
12	1				9997-0640-12 • Skruv	• Screw			
13	1				9747-0631-02 • Låsmutter	• Lock nut			
15	1				9897-0820-16 • Skruv	• Screw			
16	1				9747-0831-02 Mutter	Lock nut			
17	1				1134-4860-01 Lyftgaffel	Lift fork			
18	2				1134-0240-00 Ansattsskruv	Shoulder screw			
19	1				1134-4938-01 Lyftpedal	Lift pedal			
20	2				9997-0625-16 Skruv	Screw			
21	2				9739-0631-22 Mutter	Nut			
22	1				4231-0013-00 Fjäder	Spring			



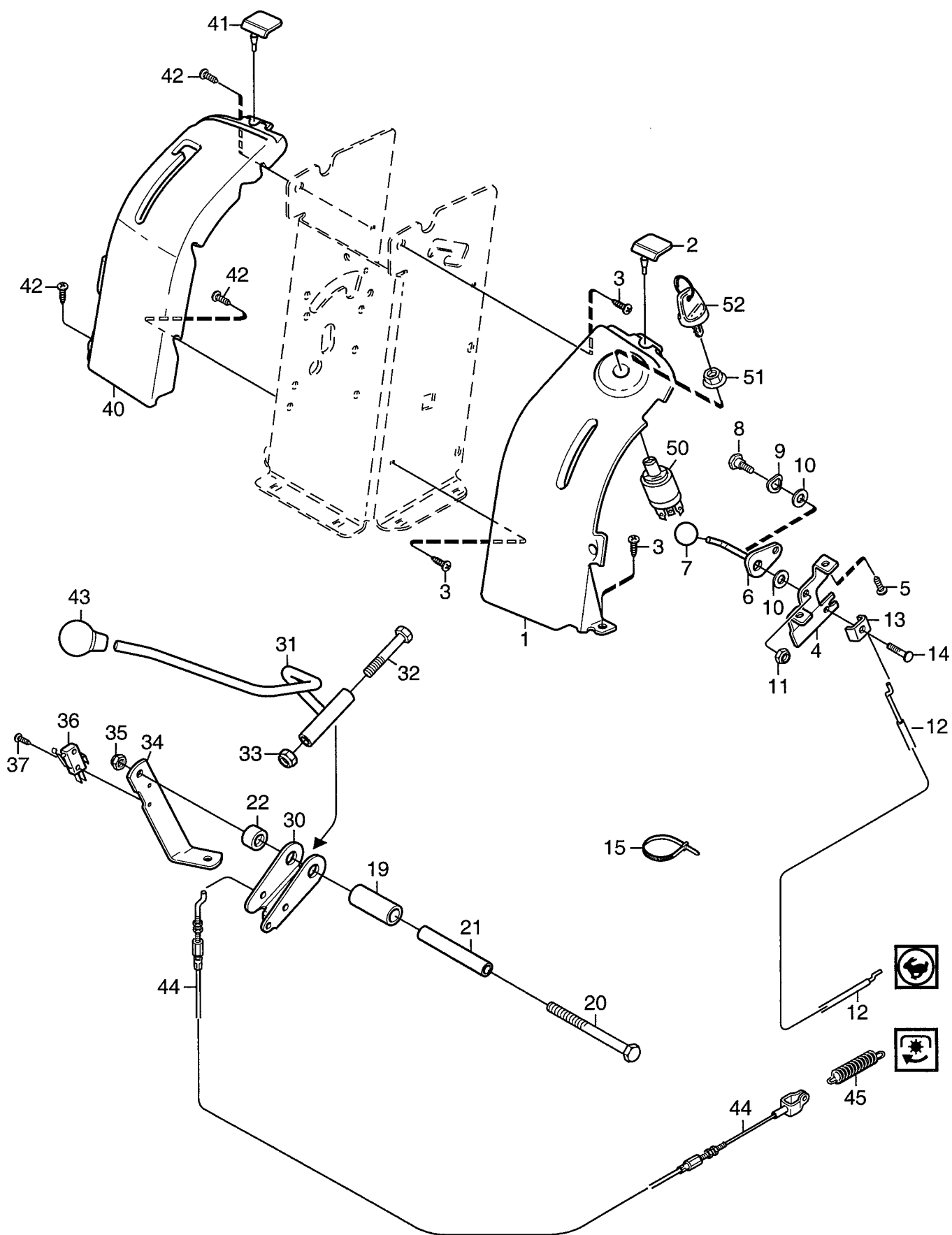
Utgåva Issue		Bildnr Picture No		READY SITS		READY SEAT		Sida Page	
2006- 11		1652						252	
Pos. Fig.	Antal/Quantity				Art nr Part No	Benämning	Description	Sats Kit	Anmärkning Notes
	2715	2716							
1	1	1			1134-5506-01	Sits	Seat		L = 20 mm L = 25 mm
3	1	1			1134-5301-01	Sitsplatta	Seat plate		
4	2	2			1134-0240-00	Ansattsskruv	Shoulder screw		
5	2	2			9747-0831-02	Mutter	Lock nut		
6	1	1			1134-5454-01	Spärr	Catch		
7	1	1			9675-0012-02	Starlock	Locking washer		
12	1	1			1134-5296-04	Sitskonsol- gul	Seat bracket- yellow		
13	1	1			1134-4256-01	Sitsfjäder	Seat spring		
14	1	1			9924-1235-19	Skruv	Screw		
15	1	1			9747-1231-02	Låsmutter	Lock nut		
16	1	1			9997-0840-16	Skruv	Screw		
17	1	1			1134-1565-06	Distans	Spacer		
18	1	1			1134-5302-01	Fjäder	Spring		
19	1	1			1134-5299-01	Tryckplatta	Push plate		
20	1	1			9699-0090-02	Planbricka	Flat washer		
21	1	1			9747-0831-02	Mutter	Lock nut		
22	1	1			1134-3156-02	Brytare (grå)	Switch (grey)		
28	4	3			9959-0820-16	Skruv	Screw		
29	2	1			9959-0825-16	Skruv	Screw		
30	2				9699-0056-02	Planbricka	Flat washer		
31	6	4			9739-0831-22	Mutter	Nut		
32		2			9897-0820-16	Skruv	Screw		
33		2			9757-0821-02	Hattmutter	Cap nut		
34		2			9699-0028-02	Planbricka	Flat washer		



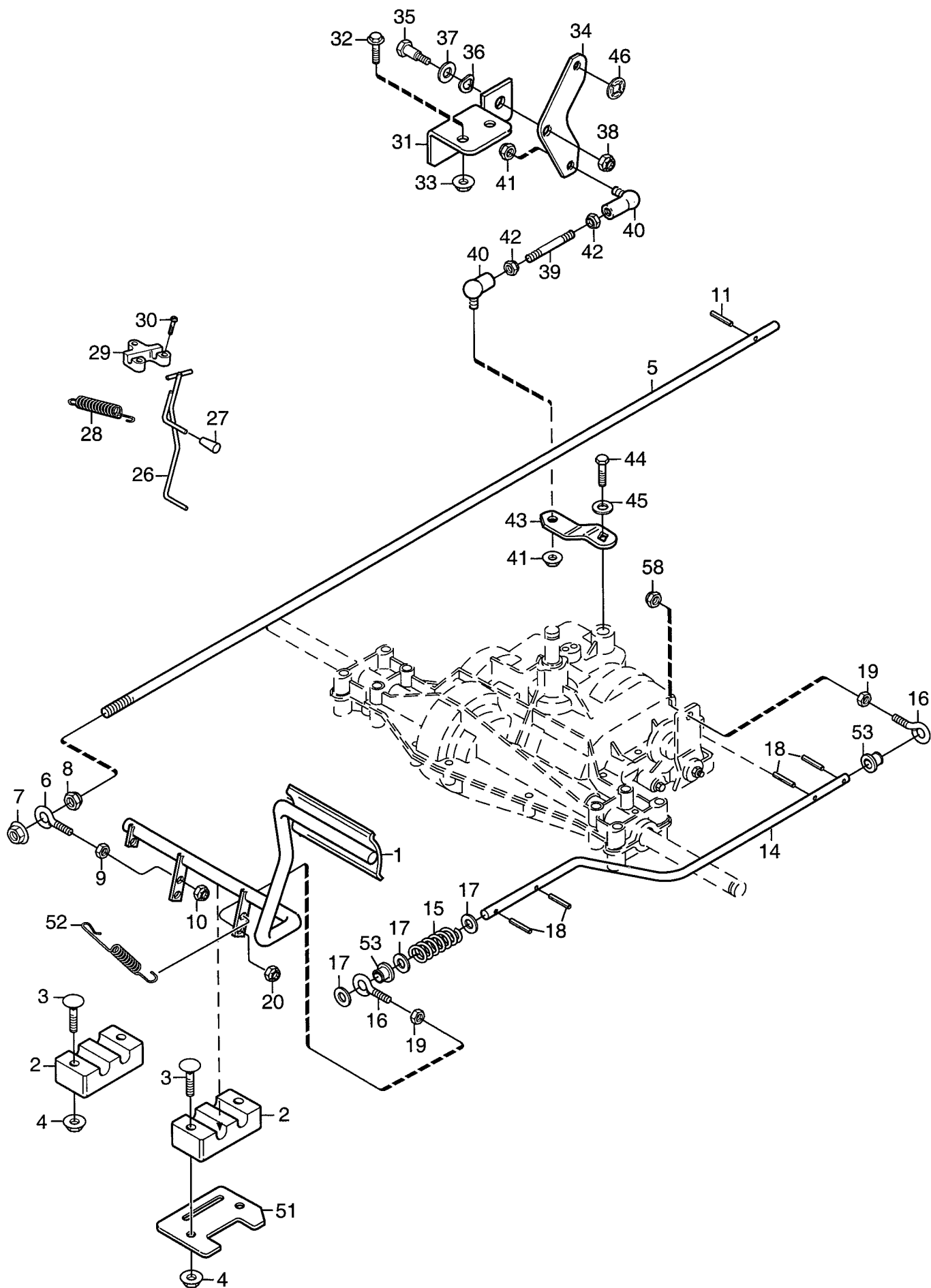
Utgåva Issue		Bildnr Picture No		READY STYRNING		READY STEERING		Sida Page	
2006- 11		1653						254	
Pos. Fig.	Antal/Quantity				Art nr Part No	Benämning	Description	Sats Kit	Anmärkning Notes
	2715	2716							
1	3				1134-0041-01	Linhjulshylsa	Bushing.....	Sats 2 st/kit of 2	
2	3				1134-3022-01	Linhållare.....	Cable holder		
3	1				1134-9025-01	Linhjul- sats	Steering pulley- kit		
4	3				9997-1040-16	Skruv	Screw		
5	2				9739-1031-22	Mutter.....	Nut		
6	1				1134-2032-04	Styrwire	Steering cable		
7	1				1134-1310-01	Tryckfjäder.....	Compression spring.....		
8	1				9699-0056-02	Planbricka.....	Flat washer.....		
9	1				9747-0831-02	Mutter.....	Lock nut		
10	1				9959-0820-16	Skruv	Screw		
11	1				1134-5349-03	Styrkonsol- grå	Steering console- grey		
12	4				9897-0820-16	Skruv	Screw		
13	4				9739-0831-22	Mutter.....	Nut		
15	1				1134-1305-05	Rattrör- nedre	Steering column- lower		
16	2				1134-1901-01	Lager	Bearing		
17	2				9893-0616-16	Skruv	Screw		
18	2				9699-0060-02	Planbricka.....	Flat washer.....		
19	1				1134-5495-01	Rattstång.....	Steering rod		
20	1				1134-1933-01	Styrrulle.....	Steering pulley		
21	1				9595-0262-00	Spännstift	Locating pin		
22	1				1134-5496-01	Ratt.....	Steering wheel		
32	1				1134-3047-01	Distans	Spacer.....		
33	2				9699-0104-02	Bricka	Washer		
36	2				1134-3047-01	Distans	Spacer.....		
37	1				1134-0041-05	Hylsa	Bushing.....		
38	1				1134-3022-01	Linhållare.....	Cable holder		
39	1				1134-9025-01	Linhjul- sats	Steering pulley- kit	Sats 2 st/kit of 2	
40	1				9997-1060-12	Skruv	Screw		



Utgåva Issue		Bildnr Picture No		READY HANDREGLAGE		READY HAND CONTROLS		Sida Page	
2006- 11		1654						256	
Pos. Fig.	Antal/Quantity				Art nr Part No	Benämning	Description	Sats Kit	Anmärkning Notes
	2715								
1	1				1134-5286-01	Reglagepanel- vä	Control panel- LH		
2	2				1134-5531-01	Dämpare	Absorber		
3	3				9893-0616-16	Skruv	Screw		
4	1				1134-5357-01	Fäste	Bracket		
5	2				9838-9516-12	Skruv	Screw		
6	1				1134-4077-01	Gasreglage	Throttle control		
7	1				1134-4078-01	Knopp	Knob		
8	1				1134-0240-00	Ansattsskruv	Shoulder screw		
9	1				9694-0001-00	Fjäderbricka	Washer		
10	2				1134-4242-01	Distansbricka	Spacer washer		
11	1				9747-0831-02	Mutter	Lock nut		
12	1				1134-1597-13	Gaswire	Throttle cable		
13	1				9500-9991-00	Wireklämma	Cable clamp		
14	1				9943-0516-16	Skruv	Screw		
15	1				9579-0003-00	Buntband	Cable holder		
20	1				9997-0812-02	Skruv	Screw		
21	1				1134-5274-02	Distans	Spacer		
22	3				1134-3047-01	Distans	Spacer		
23	1				1134-5271-01	Reglagefäste	Control bracket		
24	1				1134-5275-01	Växelspak	Gear shift lever		
25	1				1134-5535-01	Fjäder	Spring		
26	1				9997-0890-12	Skruv	Screw		
27	1				9747-0831-02	Mutter	Lock nut		
28	1				1134-5268-01	Stag	Shifter rod		
29	1				9675-0009-02	Starlock	Starlock		
30	1				1134-5271-01	Reglagefäste	Control bracket		
31	1				1134-5276-01	Reglagespak	Control lever		
32	1				9997-0890-12	Skruv	Screw		
33	1				9747-0831-02	Mutter	Lock nut		
34	1				1134-5356-01	Stag	Strut		
35	1				9747-0831-02	Mutter	Lock nut		
36	2				9400-0312-01	Mikrobrytare	Micro switch		
37	4				9840-7716-16	Skruv	Screw		
38	1				1134-5358-01	Brytarfäste	Switch bracket		
39	2				9943-0516-16	Skruv	Screw		
40	1				1134-5285-01	Reglagepanel- hö	Control panel- RH		
41	2				1134-5531-01	Dämpare	Absorber		
42	4				9893-0616-16	Skruv	Screw		
43	2				1134-2551-01	Reglageknopp	Knob		
44	1				1134-3573-06	Krafttuttagswire	PTO cable		
45	1				1134-1242-02	Fjäder	Spring		
50	1				1134-4093-01	Tändningslås	Ignition switch		
51	1				1134-4749-01	Mutter	Nut		
52	1				1134-4734-01	Tändningsnyckel	Ignition key		



Utgåva Issue		Bildnr Picture No		READY HST HANDREGLAGE		READY HST HAND CONTROLS		Sida Page	
2006- 11		1655						258	
Pos. Fig.	Antal/Quantity				Art nr Part No	Benämning	Description	Sats Kit	Anmärkning Notes
	2716								
1	1				1134-5286-01	Reglagepanel- vä	Control panel- LH		
2	2				1134-5531-01	Dämpare	Absorber		
3	3				9893-0616-16	Skruv	Screw		
4	1				1134-5357-01	Fäste	Bracket		
5	2				9838-9516-12	Skruv	Screw		
6	1				1134-4077-01	Gasreglage.....	Throttle control		
7	1				1134-4078-01	Knopp	Knob		
8	1				1134-0240-00	Ansattsskruv	Shoulder screw		
9	1				9694-0001-00	Fjäderbricka	Washer		
10	2				1134-4242-01	Distansbricka	Spacer washer		
11	1				9747-0831-02	Mutter	Lock nut		
12	1				1134-1597-13	Gaswire	Throttle cable		
13	1				9500-9991-00	Wireklämma	Cable clamp		
14	1				9943-0516-16	Skruv	Screw		
15	1				9579-0003-00	Buntband	Cable holder		
19	1				1134-5508-01	Reglagehylsa	Control sleeve		
20	1				9997-0812-02	Skruv	Screw		
21	1				1134-5274-02	Distans	Spacer		
22	1				1134-3047-01	Distans	Spacer		
30	1				1134-5271-01	Reglagefäste	Control bracket		
31	1				1134-5276-01	Reglagespak	Control lever		
32	1				9997-0890-12	Skruv	Screw		
33	1				9747-0831-02	Mutter	Lock nut		
34	1				1134-5356-01	Stag	Strut		
35	1				9747-0831-02	Mutter	Lock nut		
36	1				9400-0312-01	Mikrobrytare	Micro switch		
37	2				9840-7716-16	Skruv	Screw		
40	1				1134-5285-02	Reglagepanel- hö	Control panel- RH		
41	2				1134-5531-01	Dämpare	Absorber		
42	4				9893-0616-16	Skruv	Screw		
43	1				1134-2551-01	Reglageknopp	Knob		
44	1				1134-3573-06	Krafttuttagswire	PTO cable		
45	1				1134-1242-02	Fjäder	Spring		
50	1				1134-4093-01	Tändningslås	Ignition switch		
51	1				1134-4749-01	Mutter	Nut		
52	1				1134-4734-01	Tändningsnyckel	Ignition key		

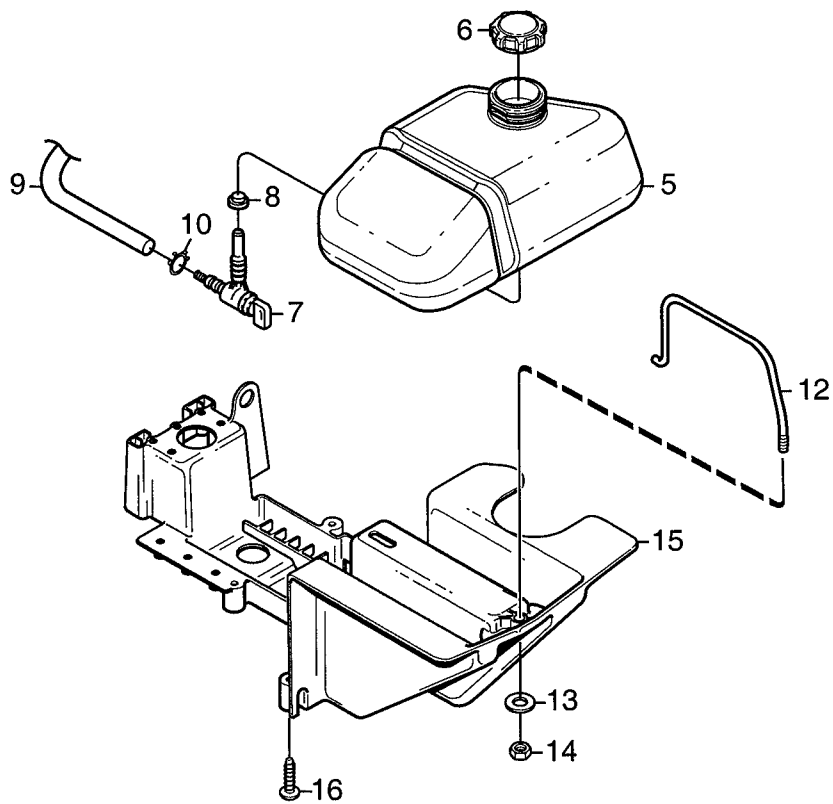
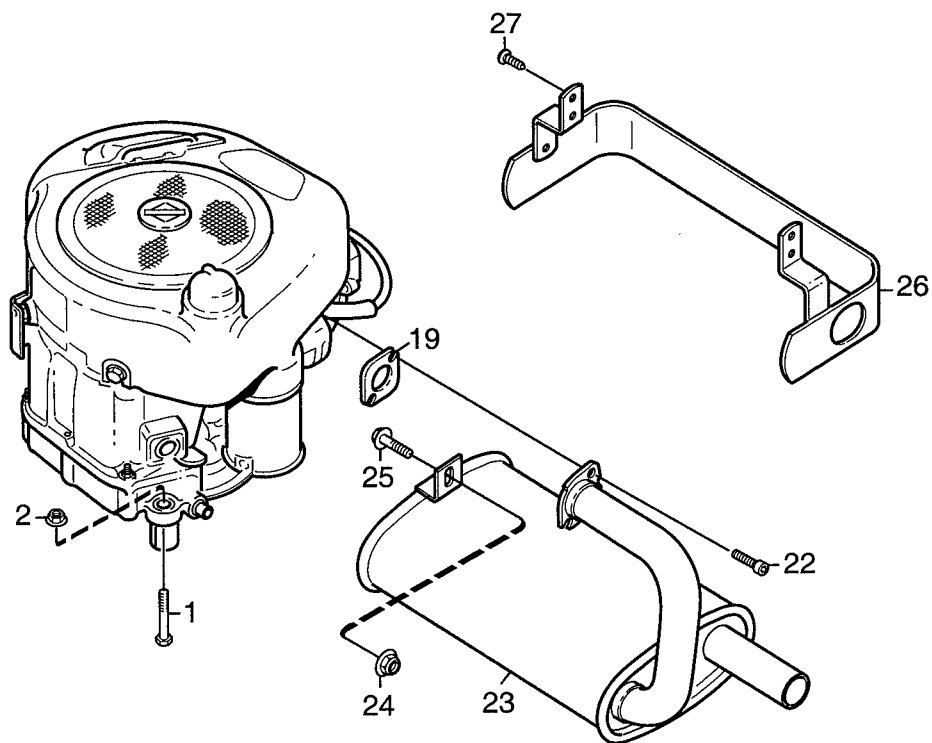


Utgåva Issue		Bildnr Picture No		READY FOTREGLAGE		READY FOOT CONTROLS		Sida Page	
2006- 11		1644A						260	
Pos. Fig.	Antal/Quantity				Art nr Part No	Benämning	Description	Sats Kit	Anmärkning Notes
	2715								
1	1				1134-4802-01	Pedal	Pedal		
2	2				1134-4624-01	Lager	Bearing		
3	4				9897-0640-12	Skruv	Screw		
4	4				9739-0631-22	Mutter	Nut		
5	1				1134-4795-01	Kopplingsstång	Clutch rod		
6	1				1134-2138-01	Skruvögla	Eye bolt		
7	1				9739-1031-22	Mutter	Nut		
8	1				9747-1031-02	Låsmutter	Lock nut		
9	1				9739-0831-22	Mutter	Nut		
10	1				9747-0831-02	Mutter	Lock nut		
11	1				9595-0208-00	Spännstift	Locating pin		
14	1				1134-4777-01	Bromsstag	Brake rod		
15	1				1134-4617-01	Fjäder	Spring		
16	2				1134-2138-01	Skruvögla	Eye bolt		
17	3				9699-0035-02	Planbricka	Flat washer		
18	4				9595-0208-00	Spännstift	Locating pin		
19	2				9739-0831-22	Mutter	Nut		
20	1				9747-0831-02	Mutter	Lock nut		
26	1				1134-5353-01	Bromsstång	Brake rod		
27	1				1134-2786-01	Plastknopp	Plastic knob		
28	1				1131-1497-01	Fjäder	Spring		
29	1				1134-4002-01	Fäste	Brake rod attachment		
30	3				9838-9516-12	Skruv	Screw		
31	1				1134-4714-01	Fästvinkel	Angle bracket		
32	2				9959-0820-16	Skruv	Screw		
33	2				9739-0831-22	Mutter	Nut		
34	1				1134-4715-01	Triangel	Triangular plate		
35	1				1134-0240-00	Ansattsskruv	Shoulder screw		
36	1				9694-0001-00	Fjäderbricka	Washer		
37	1				9699-0036-02	Planbricka	Flat washer		
38	1				9747-0831-02	Mutter	Lock nut		
39	1				1134-4717-02	Gängstång	Threaded rod		
40	2				9570-0004-00	Vinkellänk	Elbow link		
41	2				9747-0631-02	Låsmutter	Lock nut		
42	2				9739-0631-22	Mutter	Nut		
43	1				1134-5279-01	Växelarm	Shift lever		
44	1				9987-5016-16	Skruv	Screw		
45	1				9699-0060-02	Planbricka	Flat washer		
46	1				9675-0009-02	Starlock	Starlock		
51	1				1134-4793-01	Stopplåt	Stop plate		
52	1				4231-0013-00	Fjäder	Spring		
53	2				1134-4779-01	Plastbussning	Plastic bushing		
58	1				9747-0831-02	Mutter	Lock nut		

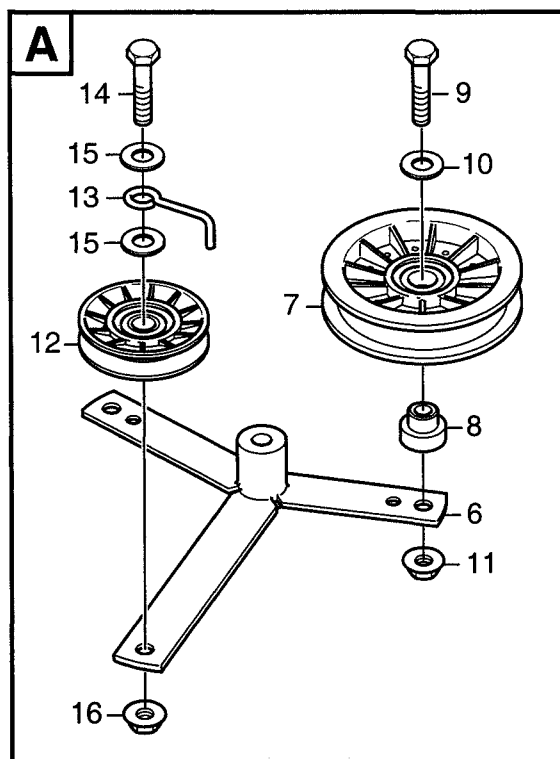
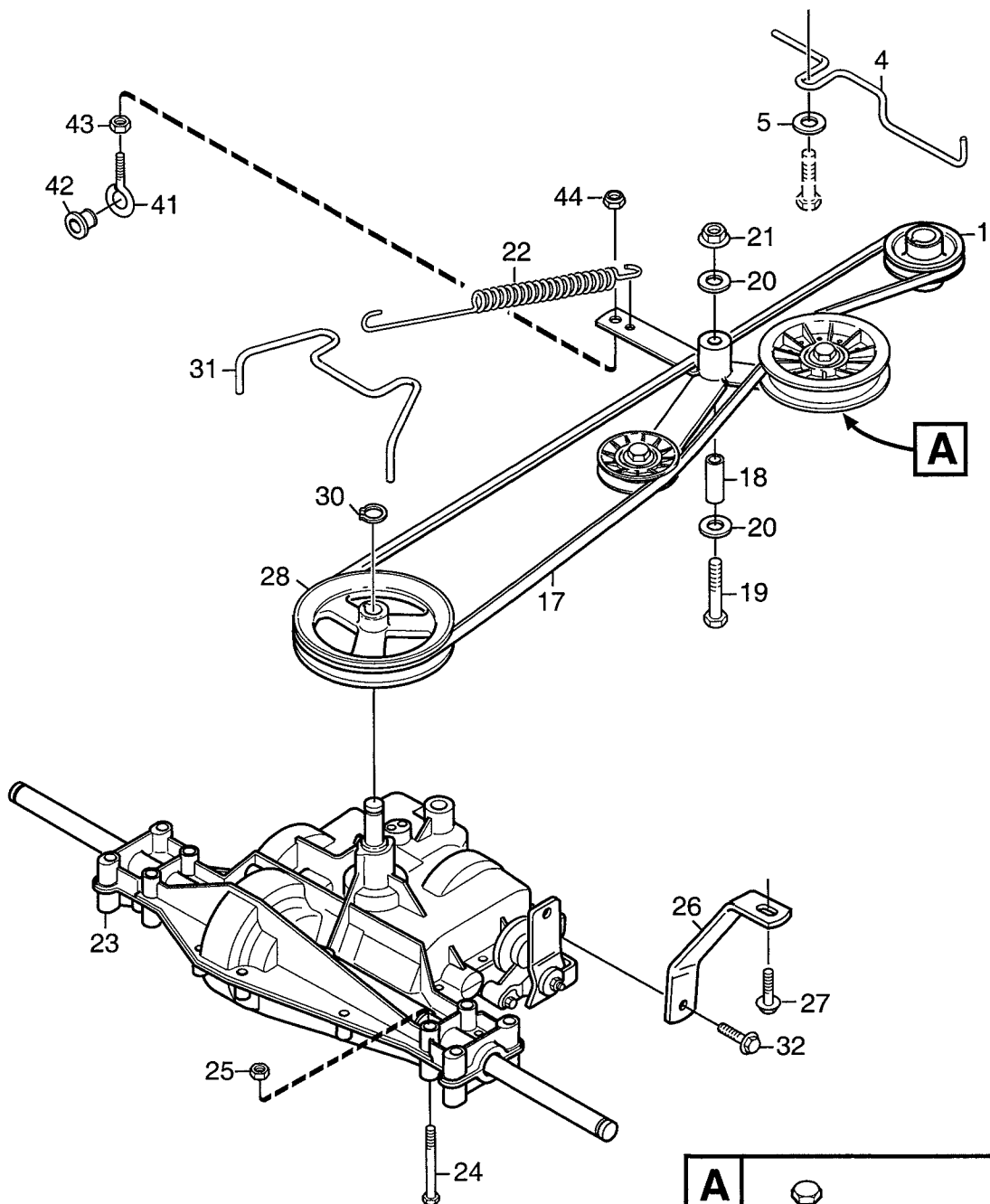


Utgåva Issue		Bildnr Picture No		READY HST FOTREGLAGE		READY HST FOOT CONTROLS		Sida Page	
2006- 11		1645A						262	
Pos. Fig.	Antal/Quantity				Art nr Part No	Benämning	Description	Sats Kit	Anmärkning Notes
	2716								
1	1				1134-4802-01	Pedal	Pedal		
2	2				1134-4624-01	Lager	Bearing.....		
3	4				9897-0640-12	Skruv	Screw		
4	4				9739-0631-22	Mutter.....	Nut		
5	1				1134-4949-01	Kopplingsstång.....	Clutch rod		
6	2				1134-2138-01	Skruvögla	Eye bolt		
7	2				9739-1031-22	Mutter.....	Nut		
9	1				9739-0831-22	Mutter.....	Nut		
10	1				9747-0831-02	Mutter.....	Lock nut		
11	1				9595-0208-00	Spännstift	Locating pin		
12	2				9699-0035-02	Planbricka.....	Flat washer.....		
13	1				1134-4617-01	Fjäder.....	Spring		
15	1				9739-0831-22	Mutter.....	Nut		
16	1				9747-0831-02	Mutter.....	Lock nut		
18	1				9598-0002-02	Låsnål.....	Pin lock		
20	1				1134-5353-01	Bromsstång	Brake rod		
21	1				1134-2786-01	Plastknopp.....	Plastic knob		
22	1				1131-1497-01	Fjäder.....	Spring		
23	1				1134-4002-01	Fäste	Brake rod attachment.....		
24	3				9838-9516-12	Skruv	Screw		
25	1				1134-4008-03	Drivpedal	Drive pedal.....		
26	2				1134-2780-01	Lager	Bearing.....		
27	2				1134-2700-01	Fäste	Bracket.....		
28	2				9959-0820-16	Skruv	Screw		
29	2				9739-0831-22	Mutter.....	Nut		
30	1				9997-0870-16	Skruv	Screw		
31	2				9739-0831-22	Mutter.....	Nut		
34	1				1134-4440-01	Axel	Shaft		
35	1				1134-4793-01	Stopplåt.....	Stop plate.....		
36	1				1134-4441-01	Stag	Link.....		
37	2				1134-0240-00	Ansattsskruv.....	Shoulder screw		
38	2				9694-0001-00	Fjäderbricka	Washer.....		
39	2				9747-0831-02	Mutter.....	Lock nut		
40	1				1134-5288-01	Reglagestång.....	Control rod.....		
41	2				9675-0012-02	Starlock	Locking washer.....		
51	1				4231-0013-00	Fjäder.....	Spring		
52	1				1134-4779-01	Plastbussning	Plastic bushing		
53	1				1134-4972-01	Bromslänk	Brake link		
54	1				9747-0831-02	Mutter.....	Lock nut		
55	1				9997-0820-16	Skruv	Screw.....		

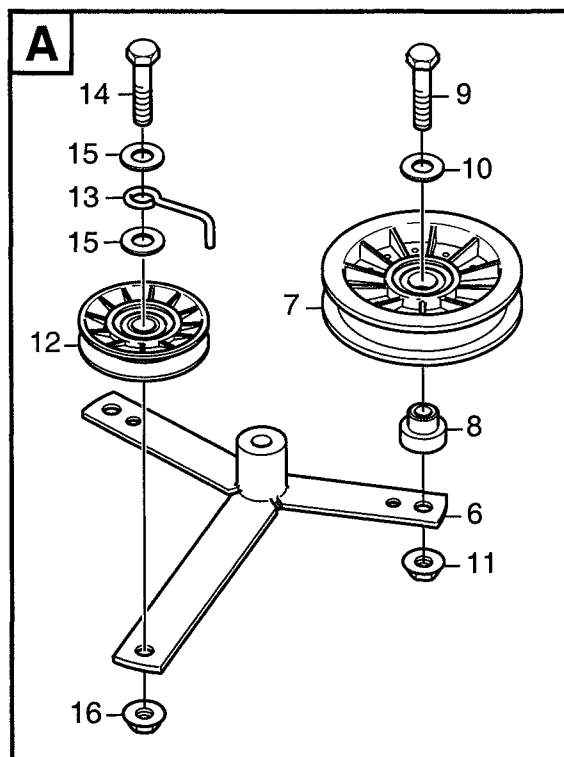
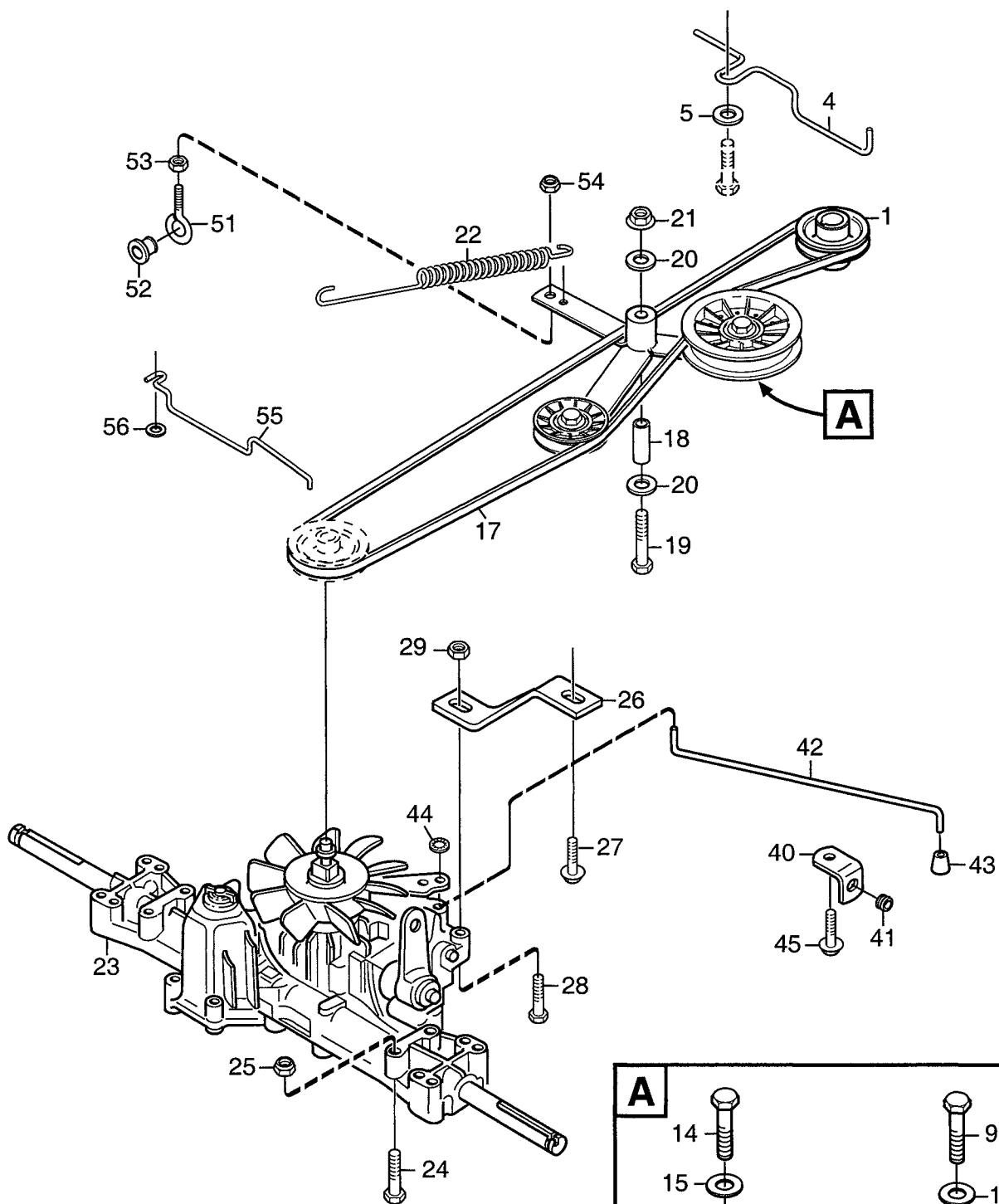
Utgåva Issue 2006- 11		Bildnr Picture No 1650		READY ELUTRUSTNING		READY EL. EQUIPMENT		Sida Page 264	
Pos. Fig.	Antal/Quantity				Art nr Part No	Benämning	Description	Sats Kit	Anmärkning Notes
	2715	2716							
1	1	1			1134-4804-01	Batteri.....	Battery		
4		1			1134-4610-01	Fäste.....	Switch bracket		
5		1			1134-3399-02	Brytare.....	Switch		
6		2			9852-8013-16	Skruv.....	Screw		
7		3			9579-0003-00	Buntband.....	Cable holder		
8	1	1			1134-2042-02	Kabel- svart.....	Cable- black.....		L = 350 mm
9	1	1			9838-9516-12	Skruv.....	Screw		
10	1	1			9747-0831-02	Mutter.....	Lock nut.....		
11	1	1			9795-3531-02	Mutter.....	Nut		1/4 UNC
12	3	3			9579-0003-00	Buntband.....	Cable holder		
22	1	1			9699-0060-02	Planbricka.....	Flat washer.....		
26	1	1			1134-2962-01	Solenoid kpl	Solenoid assy.....		
27	2	2			9794-5131-02	• Mutter.....	• Nut		
28	1	1			1134-4702-01	Kabel- röd	Cable- red		L = 380 mm
29	1	1			1134-2310-01	Batteriskydd.....	Guard cap		
30	1	1			1134-4702-02	Kabel- röd	Cable- red.....		L = 480 mm
32	1				1134-5766-01	Kablage.....	Harness.....		
32		1			1134-5767-01	Kablage.....	Harness.....		



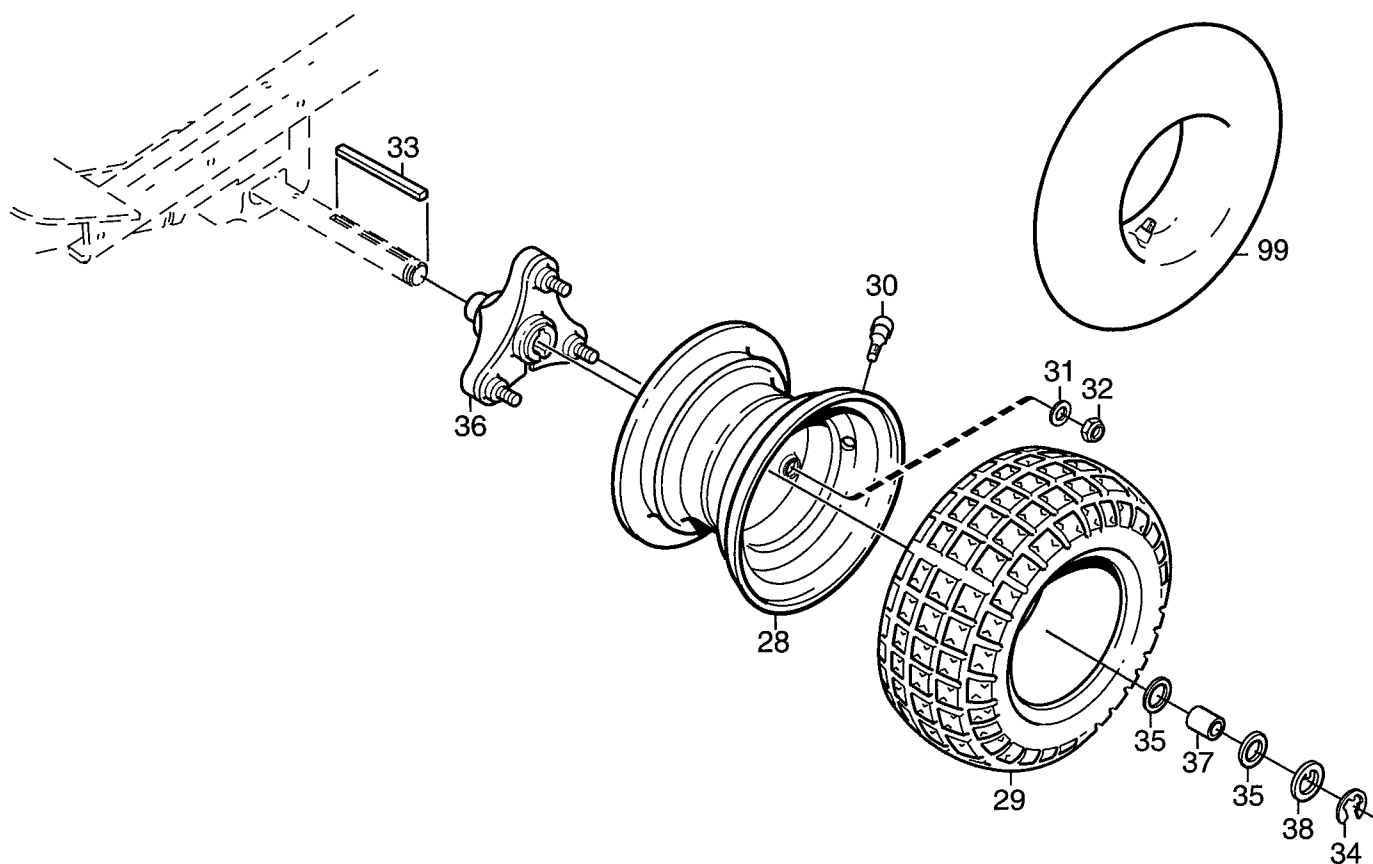
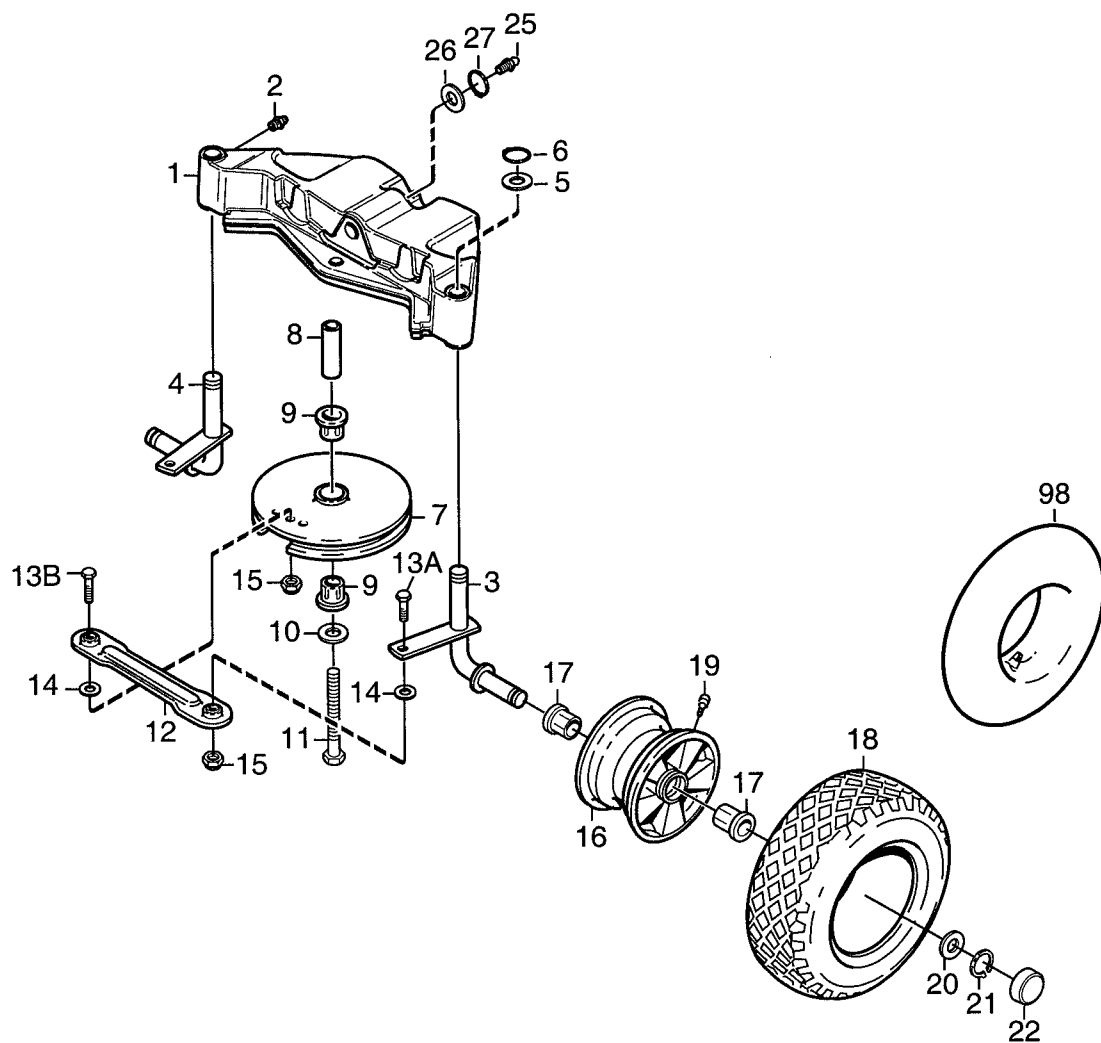
Utgåva Issue		Bildnr Picture No		READY MOTOR		READY ENGINE		Sida Page	
2006- 11		1651A						266	
Pos. Fig.	Antal/Quantity				Art nr Part No	Benämning	Description	Sats Kit	Anmärkning Notes
	2715								
1	4				9997-0840-16	Skruv	Screw		L = 460 mm
2	4				9747-0831-02	Mutter	Lock nut		
5	1				1134-5266-01	Bränsletank	Fuel tank		
6	1				1134-5532-01	Tanklock	Fuel tank cap		
7	1				1134-3224-01	Bensinkran	Fuel shut-off valve		
8	1				1134-3225-01	Gummibussning	Grommet		
9	1				1134-2975-05	Bensinslang	Fuel hose		
10	2				9578-0023-02	Slangklämma	Hose clamp		
12	1				1134-4808-01	Tankbygel	Tank clamp		
13	1				9699-0060-02	Planbricka	Flat washer		
14	1				9747-0631-02	Låsmutter	Lock nut		
15	1				1134-4807-02	Tank/batterihylla	Tank/battery shelf		
16	4				9829-8830-12	Skruv	Screw		
19	1				1134-0433-00	Ljuddämparpackning	Muffler gasket		
22	2				1134-4930-01	Skruv	Screw		
23	1				1134-5455-01	Ljuddämpare	Muffler		
24	1				9739-0831-22	Mutter	Nut		
25	1				9959-0820-16	Skruv	Screw		
26	1				1134-5457-01	Värmeskydd	Heat guard		
27	4				9893-0616-16	Skruv	Screw		



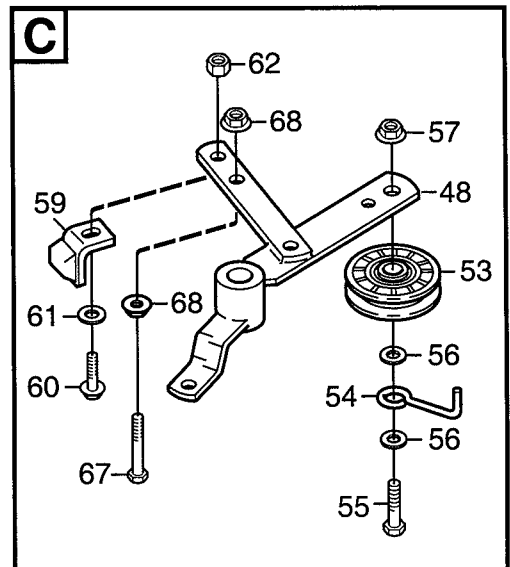
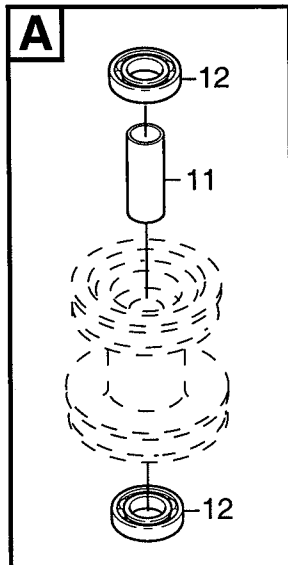
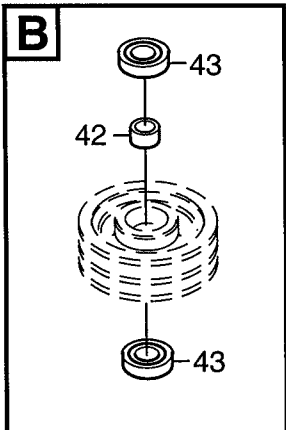
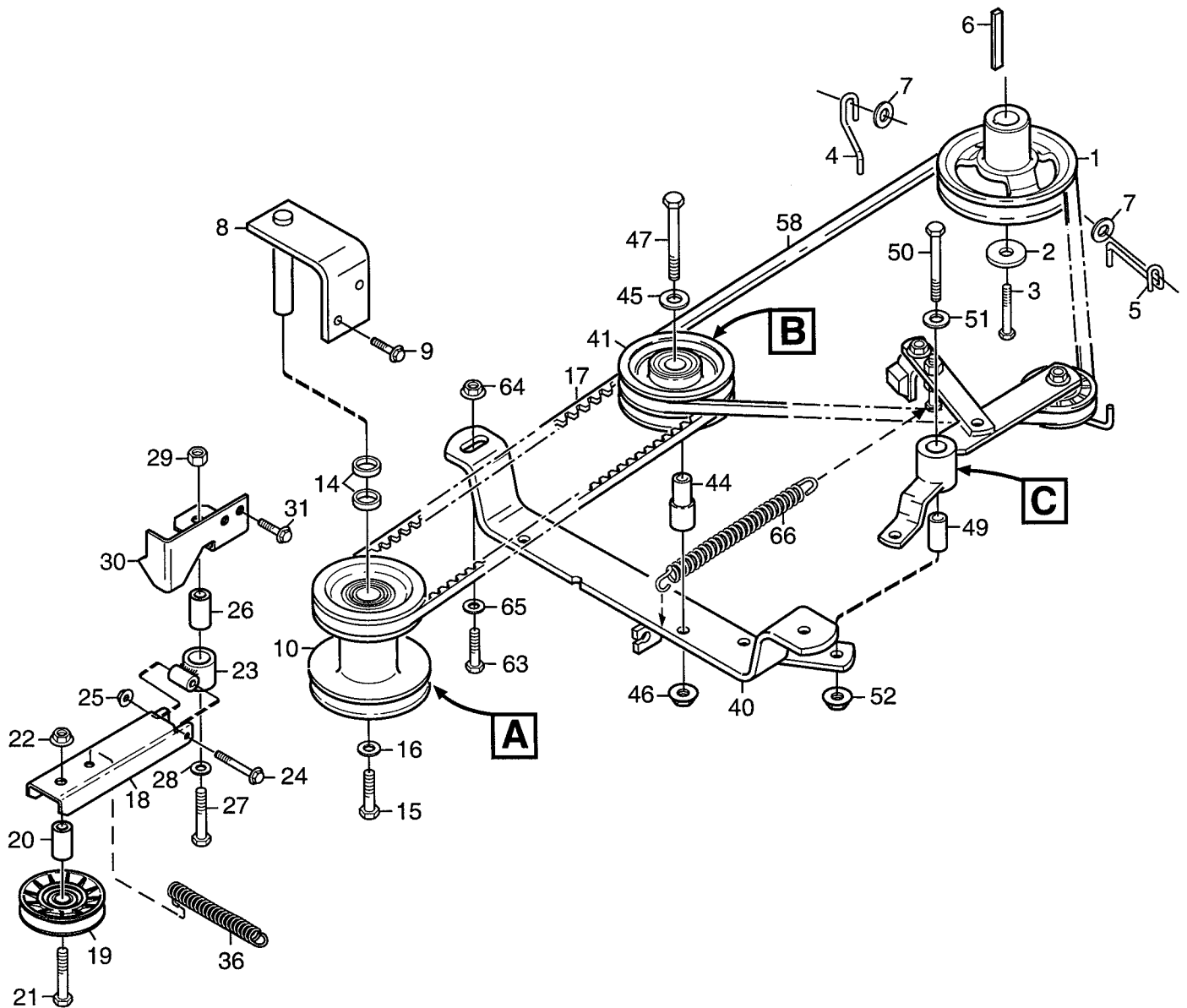
Utgåva Issue		Bildnr Picture No		READY TRANSMISSION		READY TRANSMISSION		Sida Page	
2006- 11		1643						268	
Pos. Fig.	Antal/Quantity				Art nr Part No	Benämning	Description	Sats Kit	Anmärkning Notes
	2715								
1	1				1134-4611-01	Motorremskiva	Engine belt pulley		= 9585-0124-01
4	1				1134-5414-01	Remstyrning.....	Belt guide.....		
5	1				9699-0056-02	Planbricka.....	Flat washer.....		
6	1				1134-4519-01	Spännarm.....	Tension arm		
7	1				1134-9091-01	Spännrulle	Tension roller		
8	1				1134-4614-01	Ansats	Shoulder spacer		
9	1				9997-1040-16	Skruv.....	Screw.....		
10	1				9699-0035-02	Planbricka.....	Flat washer.....		
11	1				9739-1031-22	Mutter.....	Nut		
12	1				1134-9027-01	Spännrulle	Tension roller		
13	1				1134-1795-01	Rembygel	Belt stirrup		
14	1				9997-1040-16	Skruv.....	Screw.....		
15	2				9699-0035-02	Planbricka.....	Flat washer.....		
16	1				9739-1031-22	Mutter.....	Nut		
17	1				1134-9065-01	Drivrem	Drive belt.....		
18	1				1134-1565-08	Distans	Spacer.....		
19	1				9997-0865-12	Skruv.....	Screw.....		
20	2				9699-0056-02	Planbricka.....	Flat washer.....		
21	1				9739-0831-22	Mutter.....	Nut		
22	1				1134-5214-01	Fjäder.....	Spring.....		
23	1				1134-5281-01	Transaxel kpl.....	Transaxle assy.....		
24	4				9997-0865-12	Skruv.....	Screw.....	Dana 4360-197	
25	4				9747-0831-02	Mutter.....	Lock nut.....		
26	1				1134-4687-01	Momentstag	Strut.....		
27	1				9945-0816-16	Skruv.....	Screw.....		
28	1				1134-1849-01	Remskiva.....	Belt pulley		
30	1				9650-0016-04	Spärring.....	Lock ring.....		
31	1				1134-4707-01	Remstyrning.....	Belt guide.....		
32	1				9942-0820-16	Skruv.....	Screw.....		
41	1				1134-2138-01	Skruvögla	Eye bolt.....		
42	1				1134-4779-01	Plastbussning.....	Plastic bushing		
43	1				9739-0831-22	Mutter.....	Nut		
44	1				9747-0831-02	Mutter.....	Lock nut.....		



Utgåva Issue		Bildnr Picture No		READY HST TRANSMISSION		READY HST TRANSMISSION		Sida Page	
2006- 11		1157D						270	
Pos. Fig.	Antal/Quantity				Art nr Part No	Benämning	Description	Sats Kit	Anmärkning Notes
	2716								
1	1				1134- 4611- 01	Motorremskiva	Engine belt pulley		= 9585- 0099- 01
4	1				1134- 5414- 01	Remstyrning.....	Belt guide.....		
5	1				9699- 0056- 02	Planbricka.....	Flat washer.....		
6	1				1134- 4519- 01	Spännarm	Tension arm		
7	1				1134- 9091- 01	Spännrulle	Tension roller		
8	1				1134- 4614- 01	Ansats	Shoulder spacer		
9	1				9997- 1040- 16	Skruv	Screw		
10	1				9699- 0035- 02	Planbricka.....	Flat washer.....		
11	1				9739- 1031- 22	Mutter	Nut		
12	1				1134- 9027- 01	Spännrulle	Tension roller		
13	1				1134- 1795- 01	Rembygel	Belt stirrup		
14	1				9997- 1040- 16	Skruv	Screw		
15	2				9699- 0035- 02	Planbricka.....	Flat washer.....		
16	1				9739- 1031- 22	Mutter	Nut		
17	1				1134- 9064- 01	Drivrem	Drive belt.....		
18	1				1134- 1565- 08	Distans	Spacer.....		
19	1				9997- 0865- 12	Skruv	Screw		
20	2				9699- 0056- 02	Planbricka.....	Flat washer.....		
21	1				9739- 0831- 22	Mutter	Nut		
22	1				1134- 5214- 01	Fjäder.....	Spring		
23	1				1134- 4846- 01	Transaxel	Transaxle.....	Kanzaki K46AG	
24	4				9997- 0865- 12	Skruv	Screw		
25	4				9747- 0831- 02	Mutter	Lock nut.....		
26	1				1134- 4588- 01	Momentstag	Strut.....		
27	1				9945- 0816- 16	Skruv	Screw		
28	1				9997- 0840- 16	Skruv	Screw		
29	1				9747- 0831- 02	Mutter	Lock nut.....		
40	1				1134- 4713- 01	Vinkel.....	Bracket		
41	1				1134- 2790- 01	Gummihylsa	Rubber grommet.....		
42	1				1134- 5156- 01	Dragstång	Pull rod		
43	1				1134- 4014- 01	Plastknopp.....	Plastic button		
44	1				9675- 0009- 02	Starlock	Starlock		
45	1				9945- 0816- 16	Skruv	Screw		
51	1				1134- 2138- 01	Skruvögla	Eye bolt.....		
52	1				1134- 4779- 01	Plastbussning	Plastic bushing		
53	1				9739- 0831- 22	Mutter	Nut		
54	1				9747- 0831- 02	Mutter	Lock nut		
55	1				1134- 5319- 01	Remstyrning.....	Belt guide.....		
56	1				9699- 0056- 02	Planbricka.....	Flat washer.....		



Utgåva Issue		Bildnr Picture No		READY HJUL		READY WHEELS		Sida Page	
2006- 11		1646A						272	
Pos. Fig.	Antal/Quantity				Art nr Part No	Benämning	Description	Sats Kit	Anmärkning Notes
	2715	2716							
1	1				1134-5894-01	Bakaxel	Rear axle		
2	2				9501-0500-00	Smörjnippel	Grease joint		
3	1				1134-5009-02	Spindel- vä	Spindle- LH		
4	1				1134-5009-01	Spindel- hö	Spindle- RH		
5	2				9699-0088-02	Planbricka	Flat washer		
6	2				9650-0020-04	Spårring	Circlip		
7	1				1134-5316-01	Styrskiva	Steering pulley		
8	1				1134-5575-01	Distans	Spacer		
9	1				1134-9024-01	Lager	Bearing		Sats 4 st/kit of 4
10	1				9699-0104-02	Bricka	Washer		
11	1				9997-1680-12	Skruv	Screw		
12	2				1134-3247-05	Styrstag	Tie rod		
13A	2				9997-0825-16	Skruv	Screw		L = 25 mm
13B	1				9997-0835-12	Skruv	Screw		L = 35 mm
14	2				9699-0028-02	Planbricka	Flat washer		
15	3				9747-0831-02	Mutter	Lock nut		
16	2				1134-4706-01	Fälg	Rim		
17	1				1134-9026-01	Lagerbussning	Bearing bush kit		Sats 4 st/kit of 4
18	2				9545-0117-00	Däck	Tyre		13 x 5.00 - 6
19	2				9545-0500-00	Ventil	Valve		
20	2				1134-0341-01	Bricka	Washer		
21	2				9650-0020-04	Spårring	Circlip		
22	2				1134-4344-01	Navkapsel	Hub cap		
25	1				9501-0500-00	Smörjnippel	Grease joint		
26	1				9699-0088-02	Planbricka	Flat washer		
27	1				9650-0020-04	Spårring	Circlip		
28	2				1134-5255-01	Fälg	Rim		
29	2				9545-0126-01	Däck	Tyre		16 x 6.00 - 8
30	2				9545-0500-00	Ventil	Valve		
31	6				9699-0035-02	Planbricka	Flat washer		
32	6				9747-1031-02	Låsmutter	Lock nut		
33	2				1134-2471-03	Kil	Key		
34	2				9653-0001-04	Spärryttare	Lock ring		
35	4				1134-0341-01	Bricka	Washer		
36	2				1134-4844-02	Hjulnav	Wheel hub		
37	2				1134-4845-01	Navhylsa	Hub sleeve		
38	2				1134-4981-01	Bricka	Washer		
98					9545-0204-00	Innerslang	Inner tube		Reservdel/spare part
99					9545-0203-00	Innerslang	Inner tube		Reservdel/spare part



Utgåva Issue		Bildnr Picture No		READY KRAFTUTTAG		READY POWER TAKE- OFF		Sida Page	
2006- 11		1512C						274	
Pos. Fig.	Antal/Quantity				Art nr Part No	Benämning	Description	Sats Kit	Anmärkning Notes
	2715 2716								
1	1				1134- 5046- 01	Motorremskiva	Engine belt pulley		L = 2 1/2"
2	1				1134- 5017- 01	Bricka	Washer		
3	1				9987- 5332- 16	Skruv	Screw		
4	1				1134- 5058- 01	Remstyrning	Belt guide		
5	1				1134- 5057- 01	Remstyrning	Belt guide		
6	1				9600- 0251- 01	Kil	Key		
7	2				9699- 0056- 02	Planbricka	Flat washer		
8	1				1134- 4650- 01	Monteringsbygel	Pulley bracket		
9	2				9945- 0816- 16	Skruv	Screw		
10	1				1134- 4643- 01	Mellanremskiva kpl	Intermediate pulley		
11	1				1134- 0051- 12	• Distans	• Spacer		= 9585- 0139- 01
12	2				9549- 0019- 00	• Kullager	• Ball bearing		
14	2				1134- 0052- 00	Lagerdistans	Bearing spacer		
15	1				9997- 1040- 16	Skruv	Screw		
16	1				9699- 0035- 02	Planbricka	Flat washer		
17	1				1134- 9079- 01	Drivrem	Drive belt		
18	1				1134- 5231- 01	Spännarm	Tension arm		
19	1				1134- 9027- 01	Spännrulle	Tension roller		
20	1				1134- 4619- 01	Distans	Spacer		
21	1				9997- 1060- 12	Skruv	Screw		
22	1				9747- 1031- 02	Låsmutter	Lock nut		
23	1				1134- 5232- 01	Spännarmsfäste	Attachment		
24	1				9997- 0640- 12	Skruv	Screw		
25	1				9747- 0631- 02	Låsmutter	Lock nut		
26	1				1134- 4619- 01	Distans	Spacer		
27	1				9997- 1050- 16	Skruv	Screw		
28	1				9699- 0035- 02	Planbricka	Flat washer		
29	1				9747- 1031- 02	Låsmutter	Lock nut		
30	1				1134- 4708- 02	Fäste	Bracket		
31	2				9945- 0816- 16	Skruv	Screw		
36	1				1131- 1507- 00	Fjäder	Spring		
40	1				1134- 5037- 01	Bygel	Bracket		
41	1				1134- 1769- 03	Centrumremskiva kpl	Centre pulley assy		
42	1				1134- 0051- 09	• Distans	• Spacer		
43	2				9549- 0019- 00	• Kullager	• Ball bearing		
44	1				1134- 1839- 02	Mellanaxel	Shaft		
45	1				9699- 0035- 02	Planbricka	Flat washer		
46	1				9739- 1031- 22	Mutter	Nut		
47	1				9997- 1070- 12	Skruv	Screw		
48	1				1134- 5541- 01	Kopplingsarm	Clutch lever		
49	1				1134- 1565- 10	Distans	Spacer		
50	1				9997- 0860- 16	Skruv	Screw		
51	1				9699- 0056- 02	Planbricka	Flat washer		
52	1				9739- 0831- 22	Mutter	Nut		
53	1				1134- 9027- 01	Spännrulle	Tension roller		
54	1				1134- 1795- 01	Rembygel	Belt stirrup		
55	1				9997- 1040- 16	Skruv	Screw		
56	2				9699- 0035- 02	Planbricka	Flat washer		
57	1				9739- 1031- 22	Mutter	Nut		
58	1				1134- 9078- 01	Drivrem	Drive belt		
59	1				1134- 4164- 03	Bromsklots	Brake pad		
60	1				9959- 0820- 16	Skruv	Screw		
61	1				9699- 0090- 02	Planbricka	Flat washer		
62	1				9747- 0831- 02	Mutter	Lock nut		
63	2				9959- 0820- 16	Skruv	Screw		
64	2				9739- 0831- 22	Mutter	Nut		
65	1				9699- 0056- 02	Planbricka	Flat washer		
66	1				1131- 1506- 00	Fjäder	Spring		
67	1				9997- 0860- 16	Skruv	Screw		
68	2				9739- 0831- 22	Mutter	Nut		
									= 9585- 0138- 01