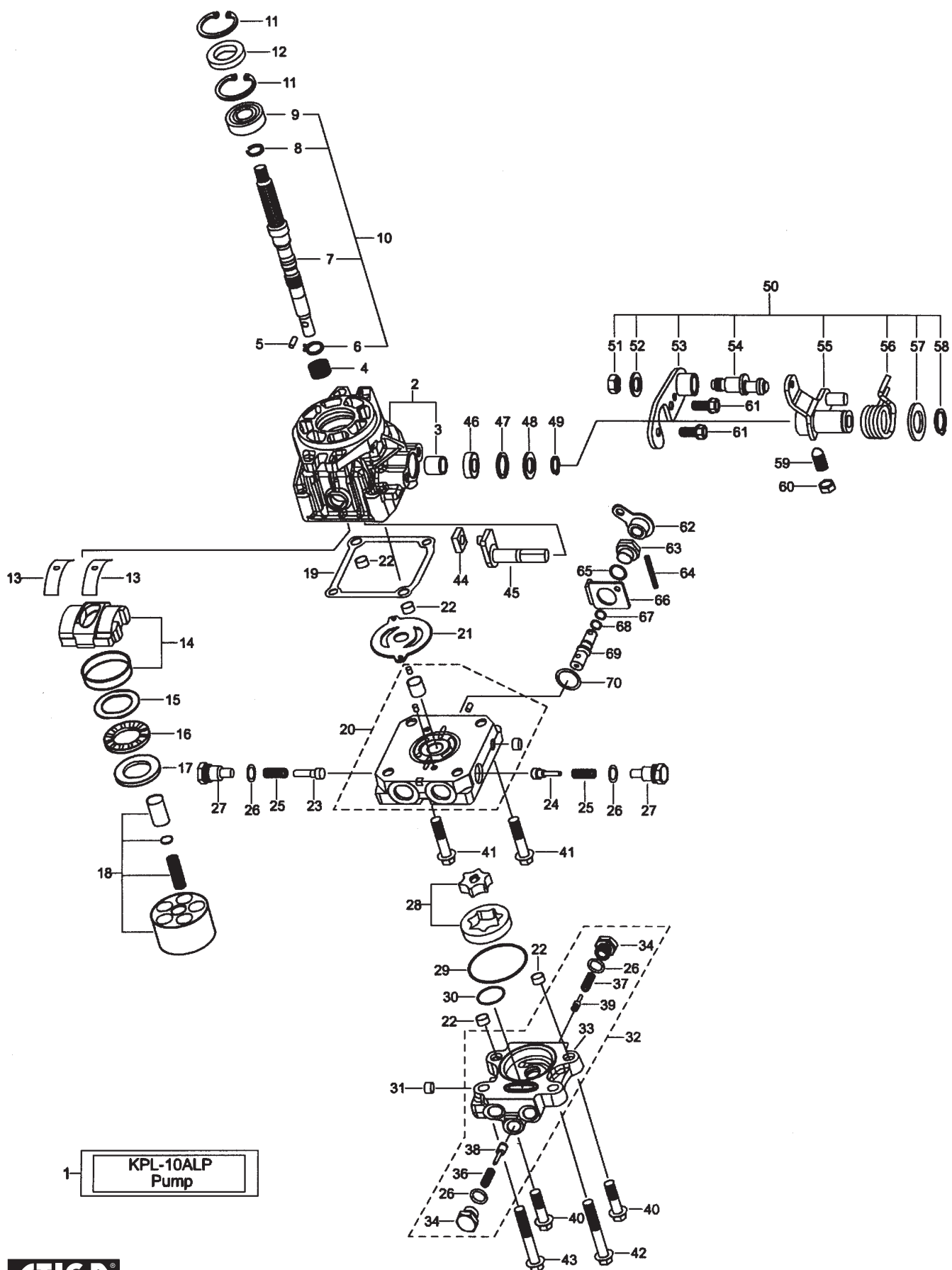


Utgåva Issue		Bildnr Picture No		KANZAKI HYDRAULPUMP KPL- 10ALP (s/n 000001- 999999)		KANZAKI HYDRAULIC PUMP KPL- 10ALP (s/n 000001- 999999)		Sida Page 442	
Pos. Fig.	Antal/Quantity				Art nr Part No	Benämning	Description	Sats Kit	Anmärkning Notes
	KPL- 10 ALP								
1	1				1134-5700-01	Hydraulpump kpl	Hydraulic pump assy		Kanzaki KPL- 10ALP Inkl. pos 3
2	1				1139-1514-01	Hus	Housing		
3	1				1139-1512-01	• Bussning	• Bushing		
4	1				1139-1018-01	Fjäder	Spring		
5	1				1139-1148-01	Stift	Pin		
6	1				1139-1021-01	• Låsring	• Snap ring		
8	1				1139-1532-01	• Låsring	• Retaining ring		
9	1				1139-0236-01	• Kullager	• Ball bearing		
10	1				1139-1516-01	Pumpaxel kpl	Pump shaft assy		Inkl. pos 6-9
11	2				1139-1369-01	Spårring	Snap ring		
12	1				1139-1396-01	Tätningarring	Seal		
13	2				1139-1022-01	Tryckplatta	Metal thrust		
14	1				1139-1722-01	Stänklatta	Swash plate		
15	1				1139-1026-01	Tryckplatta	Thrust plate		
16	1				1139-1024-01	Lager	Bearing		
17	1				1139-1525-01	Tryckplatta	Thrust plate		
18	1				1139-1509-01	Cylinderblock kpl	Cylinder block kit		
19	1				1139-1515-01	Packning	Case gasket		
20	1				1139-1521-01	Centrumhus	Center case assy		
21	1				1139-1513-01	Ventilplatta	Valve plate		
22	8				1139-1166-01	Tapp	Pin		
23	1				1139-1368-01	Ventil	Check valve F		
24	1				1139-1374-01	Ventil	Check valve R		
25	2				1139-1366-01	Fjäder	Spring		
27	2				1139-1367-01	Plugg	Check plug		
28	1				1139-1530-01	Rotor	Rotor set		
29	1				1139-1529-01	O- ring	Packing		
30	1				1139-1533-01	O- ring	O- ring		
31	1				1139-1107-01	Plugg	Plug		
32	1				1139-1518-01	Pump kpl	Power pump assy		Inkl. pos 26, 33-39
33	1				1139-1519-01	• Pumphus	• Pump body		
34	2				1139-1375-01	• Plugg	• Charge plug		
35	1				1139-1114-01	O- ring	O- ring		
36	1				1139-1376-01	• Fjäder	• Spring		
37	1				1139-1389-01	• Ventilfjäder	• Valve spring		
38	1				1139-1385-01	• Ventil	• Relief valve		
39	1				1139-1386-01	• Ventil	• Charge valve		
40	2				1139-1535-01	Skruv	Bolt w/washer		
41	4				1139-1536-01	Skruv	Bolt w/washer		
42	1				1139-1537-01	Skruv	Bolt w/washer		
43	1				1139-1538-01	Skruv	Bolt w/washer		
44	1				1139-1524-01	Växelblock	Shift block		
45	1				1139-1517-01	Reglagearm	Control arm		
46	1				1139-1365-01	Tätningarring	Oil seal		
47	1				1139-1393-01	Spårring	Ring		
48	1				1139-1382-01	Bricka	Washer		
49	1				1139-1391-01	Låsring	Ring		
50	1				1139-1520-01	Arm kpl	Neutral return assy		Inkl. pos 51-58
51	1				1139-1127-01	• Mutter	• Nut		
52	1				1139-1102-01	• Bricka	• Washer		
53	1				1139-1377-01	• Plåt	• Plate		
54	1				1139-1378-01	• Vridcentrum	• Fulcrum		
55	1				1139-1379-01	• Arm	• Arm		
56	1				1139-1380-01	• Returfjäder	• Return spring		
57	1				1139-1390-01	• Bricka	• Washer		
58	1				1139-1392-01	• Spårring	• Ring		
59	1				1139-1381-01	Stoppsskruv	Set screw		
60	1				1139-1127-01	Mutter	Nut		
61	2				1139-1122-01	Bult m.bricka	Bolt w/washer		
62	1				1139-1372-01	By- pass arm	By- pass lever		
63	1				1139-1371-01	Adapter	By- pass adapter		
64	1				1139-1395-01	Stift	Pin		
65	1				1139-1115-01	O- ring	O- ring		

X



Utgåva Issue 2011- 11		Bildnr Picture No 2424		KANZAKI HYDRAULPUMP KPL- 10ALP (s/n 000001- 999999)		KANZAKI HYDRAULIC PUMP KPL- 10ALP (s/n 000001- 999999)		Sida Page 444	
Pos. Fig.	Antal/Quantity				Art nr Part No	Benämning	Description	Sats Kit	Anmärkning Notes
	KPL- 10 ALP								
66	1				1139- 1373- 01	Plåt	By- pass plate.....		
67	1				1139- 1387- 01	Ring	Back- up ring		
68	1				1139- 1112- 01	O- ring	O- ring		
69	1				1139- 1370- 01	By- pass axel.....	By- pass pin		
70	1				1139- 1522- 01	Vågbricka.....	Wave washer.....		